

Thumbs Off Your Phone While Driving!

Every year, too many people die because we can't put our phones down while driving. That's why Nissan is supporting the Red Thumb Movement as part of our ongoing commitment to help reduce fatalities on the road. So paint your thumbnail red as a reminder not to pick up your phone when you're behind the wheel. Find out more at NissanUSA.com/redthumb

LOOKING FOR MORE INFO?

Go to NissanUSA.com, where you'll find a complete interactive digital brochure for every vehicle in our lineup. You'll get the full product story, enhanced with interactive demos and videos, plus an easy-to-use guide to trim levels, colors, accessories, and more. Or get the Interactive Brochure Hub and enjoy it on your tablet.

Available on the App Store® and Google Play.®

Los folletos de Nissan también están disponibles en español. Visita: NissanUSA.com/folletos-espanol

And follow Nissan on:



visit NissanUSA.com/quest

The App Store® logo is a registered trademark of Apple, Inc. All rights reserved. Facebook® is a registered trademark of Facebook, Inc. Google Play® is a registered trademark of Google, Inc. Twitter® is a registered trademark of Twitter, Inc. YouTube® is a registered trademark of Google, Inc. This brochure is intended for general descriptive and informational purposes only. It is subject to change and does not constitute an offer, representation or warranty (express or implied) by Nissan North America, Inc. Interested parties should confirm the accuracy of any information in this brochure as it relates to a vehicle directly with Nissan North America, Inc., before relying on it to make a purchase decision. Nissan North America, Inc., reserves the right to make changes, at any time, without prior notice, in prices, colors, materials, equipment, specifications, and models and to discontinue models or equipment. Due to continuous product development and other pre- and post-production factors, actual vehicle, materials and specifications may vary from this brochure. Some vehicles shown with optional equipment. See the actual vehicle for complete accuracy. Availability and delivery times for particular models or equipment may vary. Specifications, options and accessories may differ in Hawaii, U.S. territories and other countries. For additional information on availability, options or accessories, see your Nissan dealer or contact Nissan North America, Inc. At NissanUSA.com, you'll find virtual product demonstrations, a way to "build your own Nissan," a dealer locator, and more information about key Nissan support services. Or if you'd prefer, call **1-800-NISSAN-3** for answers to specific questions about Quest® or any other Nissan vehicle. The Nissan names, logos, product names, feature names, and slogans are trademarks owned by or licensed to Nissan Motor Co. Ltd. and/or its North American subsidiaries. Other trademarks and trade names are those of their respective owners. **Always wear your seat belt, and please don't drink and drive.** ©2015 Nissan North America, Inc.

PRINTED IN USA.



2016
QUEST®



EVERY DAY will be different. Embrace the agenda with style. Celebrate it all in first class, from daily routine to family road trip. Say yes to room with a view, from any seat. Why limit yourself? Reconfigure and go. The 2016 Nissan Quest.[®] The ordinary **BECOMES EXTRAORDINARY.**



Nissan Quest[®] SL shown in Brilliant Silver with Splash Guards.



BRING ALONG THE FUN.

Bored back there? With available high-tech and instant entertainment features, Quest® has you covered. Let the road trip begin.

- | | | | |
|-----------------|--|-------------------------------|-----------------------|
| 11" DVD Monitor | iPod® and Game Console Connectivity ⁵ | 13-speaker Bose® Audio System | Two Wireless Headsets |
|-----------------|--|-------------------------------|-----------------------|

GET AWAY WITH JUST A WARNING.

Wouldn't it be cool if your car had your back? Whether you're changing lanes on the highway or deftly maneuvering your way in or out of a parking spot, Quest®'s available Safety Shield Technologies™ act like a second set of eyes, helping to give you a whole new way to double check.

- | | | |
|---------------------------------|--------------------------------------|-----------------------------------|
| Blind Spot Warning ¹ | Moving Object Detection ² | Around View® Monitor ³ |
|---------------------------------|--------------------------------------|-----------------------------------|

ADD SOME CONVENIENCE.

All the small things that make a difference. From a convenient way to get everyone inside, to a smarter way to load everyone's gear, to an easier way to wave goodbye, you'll see innovative design at work for you – everywhere you look.

- | | | | |
|---------------------------------------|--------------------------|--------------------|--|
| One-touch Power Liftgate ⁴ | Power Second-row Windows | Low Step-in Height | One-touch Power Sliding Doors ⁴ |
|---------------------------------------|--------------------------|--------------------|--|



LIFE MADE EASIER.

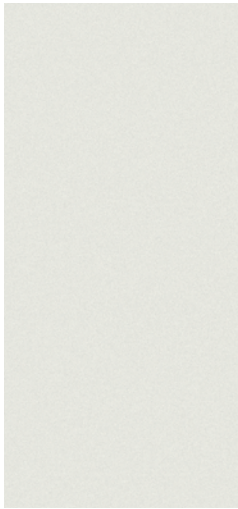
PACK IT UP. PACK IT IN.

It all comes along. In Quest®, not only does the second row fold flat, forward, and out of the way, so does the third. So unlike other minivans, instead of stowing seats, the cargo well behind the third row is a permanent place to put whatever you like.⁶

¹Blind Spot Warning is not a substitute for proper lane change procedures. The system will not prevent contact with other vehicles or accidents. It may not detect every vehicle or object around you. ²MOD cannot completely eliminate blind spots and may not detect every object. MOD operates at vehicle speeds below 5 mph. Always check surroundings and turn to look behind you before moving vehicle. ³Parking aid/convenience feature. Cannot completely eliminate blind spots. May not detect every object and does not warn of moving objects. Always check surroundings and turn to look behind you before moving vehicle.

⁴Available feature. ⁵Driving is serious business and requires your full attention. If you have to use the connected device while driving, exercise extreme caution at all times so full attention may be given to vehicle operation. iPod® is a registered trademark of Apple, Inc. All rights reserved. iPod® or other external device not included. ⁶Cargo shown for display purposes only. Cargo and load capacity limited by weight and distribution. Always secure all cargo. Heavy loading of the vehicle with cargo, especially on the roof, will affect the handling and stability of the vehicle. Bose® is a registered trademark of The Bose Corporation.

CHOOSE YOUR COLOR



Pearl White¹ QAB

S SV SL PLATINUM

| | | | | |
|---------------|---|---|---|---|
| GRAY CLOTH | ■ | ■ | | |
| GRAY LEATHER | | □ | ■ | ■ |
| BEIGE CLOTH | | | | |
| BEIGE LEATHER | | | ■ | ■ |



Brilliant Silver K23

S SV SL PLATINUM

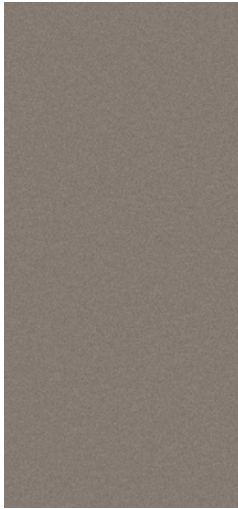
| | | | | |
|--|---|---|---|---|
| | ■ | | | |
| | | □ | ■ | ■ |
| | | | | |
| | | | | |



Gun Metallic KAD

S SV SL PLATINUM

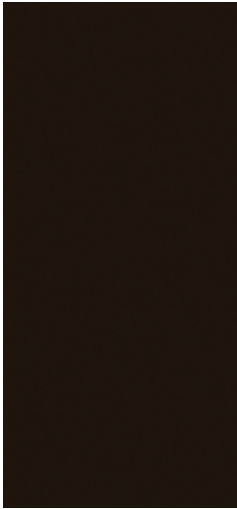
| | | | |
|---|---|---|---|
| ■ | ■ | | |
| | □ | ■ | ■ |
| | | | |
| | | | |



Titanium KAC

S SV SL PLATINUM

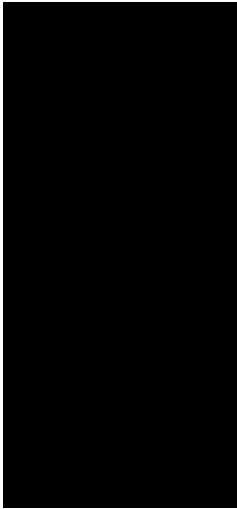
| | | | |
|---|---|---|---|
| ■ | ■ | | |
| | □ | ■ | ■ |
| | | ■ | |
| | □ | ■ | ■ |



Dark Mahogany GAE

S SV SL PLATINUM

| | | | |
|--|--|---|---|
| | | | |
| | | ■ | ■ |
| | | | |
| | | ■ | ■ |



Super Black KH3

S SV SL PLATINUM

| | | | |
|---|---|---|---|
| ■ | ■ | | |
| | □ | ■ | ■ |
| | | ■ | |
| | □ | ■ | ■ |

■ Standard

□ Optional

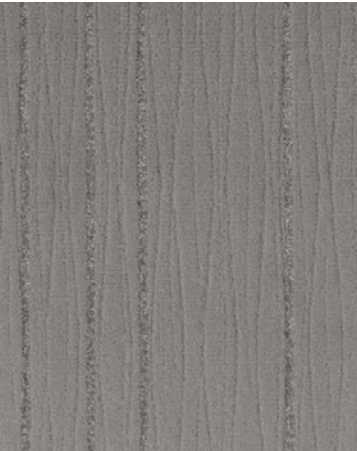
¹Extra cost option.

Nissan has taken care to ensure that the color swatches presented here are the closest possible representations of actual vehicle colors. Swatches may vary slightly due to the printing process and whether viewed in daylight, fluorescent or incandescent light. Please see the actual colors at your local Nissan dealer.

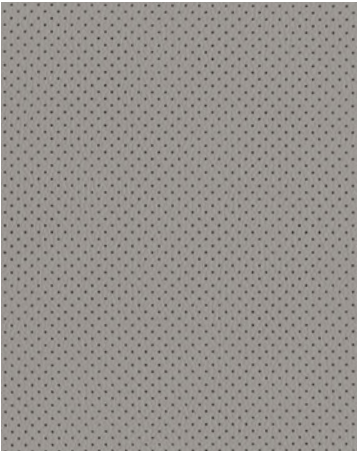
CHOOSE YOUR FABRIC



Nissan Quest® Platinum shown in Beige Leather.



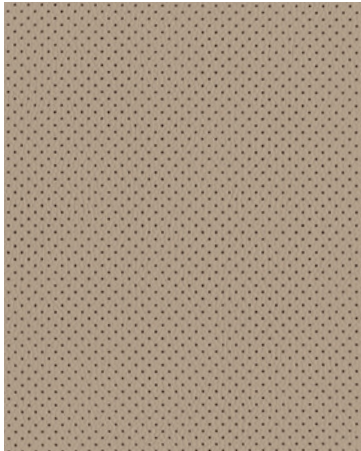
Gray Cloth
S | SV



Gray Leather
SV | SL | PLATINUM



Beige Cloth
SV



Beige Leather
SV | SL | PLATINUM

CHOOSE YOUR TRIM LEVEL

S

- 3.5-liter V6 engine with Xtronic CVT® (Continuously Variable Transmission)
- Anti-lock Braking System (ABS)
- Vehicle Dynamic Control (VDC)¹ and Traction Control System (TCS)
- Tire Pressure Monitoring System (TPMS) with Easy-Fill Tire Alert^{2, 3}
- Nissan Intelligent Key® with Push Button Ignition
- AM/FM/CD audio system with auxiliary input jack and four speakers
- Cruise control with illuminated steering wheel-mounted switches
- Sun visors with illuminated vanity mirrors and extensions
- Front map lights, rear reading lights, and rear cargo light
- Two 12-volt DC power outlets
- Power second-row side windows
- 7-passenger seating capacity and permanent rear storage well (behind third row)
- Fold-flat second-row captain's chairs and fold-flat third-row bench seat
- Second- and third-row air conditioning/heater vents with second-row controls
- Wood-tone trim on dashboard and front door panels
- Nissan Advanced Air Bag System and six standard air bags⁴



SL

INCLUDES SV EQUIPMENT PLUS:

- 18" Aluminum-alloy wheels
- Side sill spoilers with chrome accents
- One-touch power liftgate
- Smart Auto Headlights
- Leather-appointed seats and door trim
- Leather-wrapped shift knob
- Quick Comfort® heated front seats
- 8-way power driver's seat with power lumbar support
- Quick Release third-row folding seatbacks
- Auto-dimming interior rearview mirror with digital compass
- Power heated outside mirrors with turn signal indicators
- HomeLink® Universal Transceiver



- KEY AVAILABLE PACKAGES:
- DVD Entertainment System Package
 - Dual Opening Glass Moonroof Package
 - Bose® Audio System Package

SV

INCLUDES S EQUIPMENT PLUS:

- 16" Aluminum-alloy wheels
- Fog lights
- Roof rails
- One-touch power sliding doors
- RearView Monitor⁵
- Premium AM/FM/CD audio system with 5.0" color display and six speakers
- SiriusXM® Satellite Radio⁶
- Streaming audio via Bluetooth® wireless technology^{7, 8}
- Bluetooth® Hands-free Phone System⁷
- USB connection port for iPod® interface and other compatible devices
- Leather-wrapped steering wheel with illuminated audio controls
- Tri-zone Automatic Temperature Control (ATC)
- Rear privacy glass



- KEY AVAILABLE PACKAGES:
- Leather Package
 - DVD Entertainment System Package

PLATINUM

INCLUDES SL EQUIPMENT PLUS:

- High Intensity Discharge (HID) xenon headlights
- Around View® Monitor (AVM)⁵
- Moving Object Detection (MOD)⁹
- Blind Spot Warning (BSW)¹⁰
- Nissan Hard Drive Navigation System with 8.0" touch-screen monitor and Voice Recognition¹¹
- NavTraffic® and NavWeather® provided by SiriusXM®
- DVD Entertainment System with second-row 11.0" DVD monitor
- Bose® audio system with 13 speakers
- Advanced Climate Control System with in-cabin polyphenol microfilter
- Automatic tilt-in-reverse outside mirrors
- Driver's memory seat system (two presets, remote-activated)
- 4-way power front-passenger's seat
- Power-return third-row seat
- Wood-tone trim on sliding door panels



- KEY AVAILABLE PACKAGE:
- Dual Opening Glass Moonroof Package

Images may show additional available equipment. ¹VDC, which should remain on when driving except when freeing the vehicle from mud or snow, cannot prevent accidents due to abrupt steering, carelessness, or dangerous driving techniques. ²TPMS is not a substitute for regular tire pressure checks. ³Vehicle must be on for the Easy-Fill Tire Alert to operate. ⁴Air bags are only a supplemental restraint system; always wear your seat belt. Even with the occupant-classification sensor, rear-facing child restraints should not be placed in the front-passenger's seat. All children 12 and under should ride in the rear seat properly secured in child restraints, booster seats, or seat belts according to their size. Air bags will only inflate in certain accidents; see your Owner's Manual for more details. ⁵Parking aid/convenience feature. Cannot completely eliminate blind spots. May not detect every object and does not warn of moving objects. Always check surroundings and turn to look behind you before moving vehicle. ⁶Required monthly subscriptions sold separately for each available SiriusXM feature after trial period, and are continuous until you call SiriusXM to cancel. Installation costs, one-time activation fee, other fees and taxes will apply. Each SiriusXM feature availability is dependent upon vehicle model, trim level, packaging, and/or options, and may only be available in select markets. Satellite Radio U.S. service, NavWeather® service, and SiriusXM Travel Link® services (if any of the foregoing features are

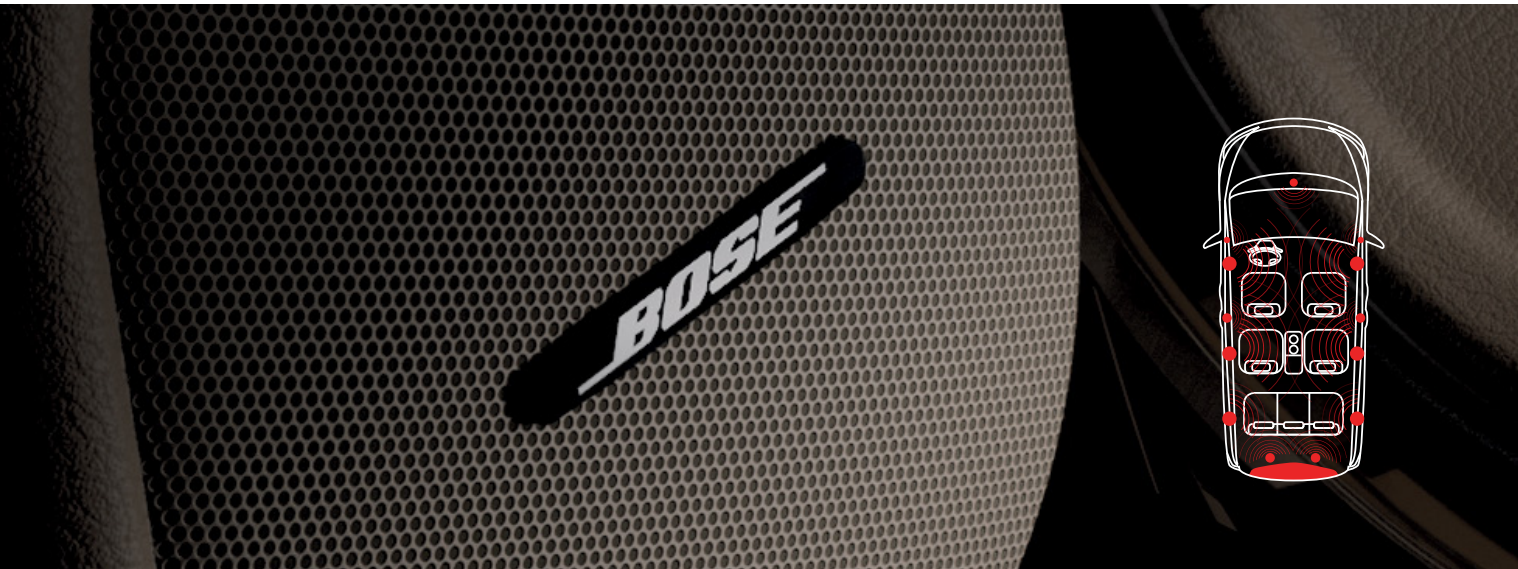
equipped on vehicle) available only to those 18 or older in the 48 contiguous states and D.C. Fees and programming subject to change. Subscriptions governed by Customer Agreement available at siriusxm.com. ©2016 Sirius XM Radio Inc. Sirius®, XM® and all related marks and logos are trademarks of Sirius XM Radio Inc. ⁷Availability of specific features is dependent upon the phone's Bluetooth® support. Please refer to your phone Owner's Manual for details. Bluetooth® word mark and logos are owned by Bluetooth SIG, Inc., and any use of such marks by Nissan is under license. See NissanUSA.com/bluetooth for details. ⁸Not available with DVD Entertainment System Package. ⁹MOD cannot completely eliminate blind spots and may not detect every object. MOD operates at vehicle speeds below 5 mph. Always check surroundings and turn to look behind you before moving vehicle. ¹⁰Blind Spot Warning is not a substitute for proper lane change procedures. The system will not prevent contact with other vehicles or accidents. It may not detect every vehicle or object around you. ¹¹Never program while driving. GPS mapping may not be detailed in all areas or reflect current road status. Bose® is a registered trademark of The Bose Corporation. HomeLink® is a registered trademark of Gentex Corporation. iPod® is a registered trademark of Apple, Inc. All rights reserved. iPod® or other external device not included.

CHOOSE YOUR PACKAGE



SV | LEATHER PACKAGE:

- Leather-appointed seats and door trim
- Quick Comfort® heated front seats
- 8-way power driver's seat with center armrest
- Driver's seat power lumbar support
- Front-passenger seatback pocket
- Leather-wrapped shift knob



SL | BOSE® AUDIO SYSTEM PACKAGE:

- Bose® audio system with AM/FM/CD and 13 speakers



SV | SL | DVD ENTERTAINMENT SYSTEM PACKAGE:

- DVD Entertainment System with 7.0" color in-dash monitor
- Auxiliary audio/video input jacks
- Two wireless headsets and remote control
- 120-volt AC power outlet
- Dual Media Playback capability
- Second-row 11.0" WVGA DVD monitor
- Game console connectivity
- Deletes Bluetooth® Streaming Audio



SL | PLATINUM | DUAL OPENING GLASS MOONROOF PACKAGE:

- Dual opening glass moonroof

CHOOSE YOUR ACCESSORIES



MAKE EVERY DAY EVEN MORE SPECIAL.

Every Genuine Nissan Accessory is custom-fit, custom-designed and durability-tested. Each one is backed by Nissan's 3-year/36,000-mile (whichever occurs first) limited warranty (if installed by dealer at the time of purchase),¹ and can be financed when installed by dealer at time of purchase.

- A. **Cargo Organizer**²
Indulge your inner neat freak.
- B. **Illuminated Kick Plates (2-piece set)**
Fewer scuffs and a grand entry, every time.
- C. **Interior Accent Lighting**
Bring some color to the carpool.
- D. **All-season Floor Mats**
The answer to muddy shoes and rogue sippy cups.
- E. **Rear Bumper Protector**
Fight back against preventable scratches.
- F. **Roof Rail Crossbars**²
You'll really get attached to them.
- G. **Hatch Tent**
It's Quest®! It's a campsite. It's both!
- H. **Cargo Area Protector**²
Because being a cargo area isn't easy.

Additional Accessories:

- Splash Guards
- Hood Protector
- Carpeted Floor Mats
- Towing Accessories³
- Family Travel Clean-up Kit
- Nissan VTRS (Vehicle Tracking and Recovery System)⁴
- And More

¹Covered by Nissan's Limited Warranty on Genuine Nissan Replacement Parts, Genuine NISMO® S-Tune Parts, and Genuine Nissan Accessories for the longer of 12 months/12,000 miles (whichever occurs first) or the remaining period under the 3-year/36,000-mile (whichever occurs first) Nissan New Vehicle Limited Warranty. Terms and conditions apply. See Warranty Information Booklet for details. ²Cargo and load capacity limited by weight and distribution. Always secure all cargo. Heavy loading of the vehicle with cargo, especially on the roof, will affect the handling and stability of the vehicle. ³See Nissan Towing Guide and Owner's Manual for proper use. ⁴VTRS requires owner registration, a constant 12-volt source, and cellular and GPS satellite availability to function properly.

GENUINE NISSAN ACCESSORIES

For more information and to shop online for Quest® Genuine Nissan Accessories, go to bit.ly/16quest-estore



To see Genuine Nissan Accessories in action, go to bit.ly/16gnavideos

Nissan Quest® SL shown in Brilliant Silver with Hood Protector, Roof Rail Crossbars, Side-window Deflectors, and Splash Guards.

SPECIFICATIONS

| Engine | S | SV | SL | Platinum |
|--|---|----|----|----------|
| VQ35DE – 3.5-liter DOHC 24-valve V6 engine ¹ | ■ | ■ | ■ | ■ |
| — Horsepower – 260 hp @ 6,000 rpm | | | | |
| — Torque – 240 lb-ft @ 4,400 rpm | | | | |
| Continuously Variable Valve Timing Control System (CVTCS) | ■ | ■ | ■ | ■ |
| Nissan Direct Ignition System with double-tipped iridium spark plugs | ■ | ■ | ■ | ■ |
| Electronic drive-by-wire throttle | ■ | ■ | ■ | ■ |

| Drivetrain | | | | |
|---|---|---|---|---|
| Front engine/Front-Wheel Drive | ■ | ■ | ■ | ■ |
| Xtronic CVT® (Continuously Variable Transmission) | ■ | ■ | ■ | ■ |

| Brakes | | | | |
|---|---|---|---|---|
| 4-wheel vented disc brakes | ■ | ■ | ■ | ■ |
| Anti-lock Braking System (ABS) | ■ | ■ | ■ | ■ |
| Electronic Brake force Distribution (EBD) | ■ | ■ | ■ | ■ |
| Brake Assist (BA) | ■ | ■ | ■ | ■ |

| Suspension/Steering | | | | |
|---|---|---|---|---|
| Independent strut front suspension | ■ | ■ | ■ | ■ |
| Front stabilizer bar | ■ | | ■ | ■ |
| Multi-link independent rear suspension | ■ | ■ | ■ | ■ |
| Vehicle-speed-sensitive electric power steering | ■ | ■ | ■ | ■ |

| Wheels/Tires | | | | |
|---|---|---|---|---|
| 16" x 6.5" steel wheels with bolt-on wheel covers | ■ | | | |
| 16" x 7.0" aluminum-alloy wheels | | ■ | | |
| 18" x 7.0" aluminum-alloy wheels | | | ■ | ■ |
| P225/65TR16 all-season tires | ■ | ■ | | |
| P235/55TR18 all-season tires | | | ■ | ■ |

| Exterior Features | | | | |
|--|---|---|---|---|
| Smart Auto Headlights | | | ■ | ■ |
| High Intensity Discharge (HID) xenon headlights | | | | ■ |
| Fog lights | | ■ | ■ | ■ |
| Dual sliding rear doors | ■ | ■ | ■ | ■ |
| One-touch power sliding doors | | ■ | ■ | ■ |
| One-touch power liftgate | | ■ | ■ | ■ |
| Roof rails | ■ | ■ | ■ | ■ |
| Dual opening glass moonroof | | | ■ | ■ |
| Power outside mirrors | ■ | ■ | | |
| Power outside mirrors with turn signal indicators | | | ■ | ■ |
| Heated outside mirrors | | | ■ | ■ |
| Automatic tilt-in-reverse outside mirrors | | | ■ | ■ |
| Rear privacy glass | | ■ | ■ | ■ |
| Chrome-accented grille and chrome license plate finisher | | ■ | ■ | ■ |
| Side sill spoilers with chrome accents | | | ■ | ■ |

| Comfort/Convenience | | | | |
|---|---|---|---|---|
| RearView Monitor ² | | ■ | ■ | |
| Around View® Monitor (AVM) ² | | | | ■ |
| Nissan Intelligent Key® with Push Button Ignition | ■ | ■ | ■ | ■ |

- Standard
- Part of DVD Entertainment System Package
- Part of Leather Package
- Part of Bose® Audio System Package
- Part of Dual Opening Glass Moonroof Package

| Comfort/Convenience (continued) | S | SV | SL | Platinum |
|---|---|----|----|----------|
| Remote front windows down and power sliding doors | | ■ | ■ | ■ |
| Nissan Hard Drive Navigation System with 8.0" color touch-screen monitor and Voice Recognition ³ | | | | ■ |
| NavTraffic® and NavWeather® provided by SiriusXM ⁴ | | | | ■ |
| Bluetooth® Hands-free Phone System ⁵ | | ■ | ■ | ■ |
| HomeLink® Universal Transceiver | | | ■ | ■ |
| Auto-dimming rearview mirror with digital compass | | | ■ | ■ |
| Air conditioning | ■ | ■ | ■ | ■ |
| Tri-zone Automatic Temperature Control (ATC) | | ■ | ■ | |
| Advanced Climate Control System | | | | ■ |
| In-cabin charcoal microfilter | ■ | ■ | ■ | |
| In-cabin polyphenol microfilter | | | | ■ |
| Second- and third-row air conditioning/heater vents with second-row controls | ■ | ■ | ■ | ■ |
| Power door locks with auto-locking feature | | ■ | ■ | |
| Power front windows with driver's one-touch auto-up/down | ■ | | | |
| Power front windows with one-touch auto-up/down | | ■ | ■ | ■ |
| Power second-row side windows | ■ | ■ | ■ | ■ |
| Second- and third-row manual side sunshades | | | | ■ |
| Cruise control | ■ | ■ | ■ | ■ |
| Variable intermittent speed-sensitive flat-blade windshield wipers and intermittent rear wiper | ■ | ■ | ■ | ■ |
| Front map lights and rear reading lights | ■ | ■ | ■ | ■ |
| Sun visors with illuminated vanity mirrors and extensions | ■ | ■ | ■ | ■ |
| First- and second-row height-adjustable seat belts | | ■ | ■ | ■ |
| Two 12-volt DC power outlets | ■ | ■ | ■ | ■ |
| 120-volt AC power outlet | | ■ | ■ | ■ |
| First-row center console with cup holders | ■ | ■ | ■ | ■ |
| Removable second-row center console with cup holders | ■ | ■ | ■ | ■ |
| Driver seatback pocket | | | ■ | ■ |
| Front-passenger seatback pocket | | ■ | ■ | ■ |
| Permanent rear storage well | ■ | ■ | ■ | ■ |

| Seating/Appointments | | | | |
|---|---|---|---|---|
| 6-way manual driver's seat with center armrest | ■ | ■ | | |
| 8-way power driver's seat with center armrest | | ■ | | ■ |
| 4-way power front-passenger's seat | | | | ■ |
| Driver's seat power lumbar support | | ■ | | ■ |
| Driver's memory seat system (two presets, remote-activated) and power-return third-row seat | | | | ■ |
| Quick Comfort® heated front seats | | ■ | ■ | ■ |
| Second-row captain's chairs (sliding and reclining) with third-row easy-entry feature | ■ | ■ | ■ | ■ |
| Fold-flat second-row captain's chairs | ■ | ■ | ■ | ■ |
| Third-row 60/40 split fold-flat bench seat | ■ | ■ | | ■ |
| Quick Release third-row folding seatbacks | | | ■ | ■ |
| Cloth seat trim | ■ | ■ | | |
| Leather-appointed seats and door trim | | ■ | ■ | ■ |
| Leather-wrapped steering wheel | | ■ | ■ | ■ |
| Leather-wrapped shift knob | | ■ | ■ | ■ |
| Wood-tone trim on dashboard and front door panels | ■ | ■ | ■ | ■ |
| Wood-tone trim on sliding door panels | | | | ■ |

| Audio/Entertainment | S | SV | SL | Platinum |
|---|---|----|----|----------|
| AM/FM/CD audio system | ■ | | | |
| Premium AM/FM/CD audio system with 5.0" color display | | | | |
| Bose® audio system and AM/FM/CD | | ■ | ■ | |
| SiriusXM® Satellite Radio ⁴ | | ■ | ■ | ■ |
| Streaming audio via Bluetooth® wireless technology ^{6,6} | | ■ | ■ | ■ |
| DVD Entertainment System with 7.0" color in-dash monitor (8.0" on Platinum) | | ■ | ■ | ■ |
| Second-row 11.0" WVGA DVD monitor with auto-dimming function | | ■ | ■ | ■ |
| Dual Media Playback capability | | ■ | ■ | ■ |
| Two wireless headsets and remote control | | ■ | ■ | ■ |
| USB connection port for iPod® interface and other compatible devices ⁷ | | ■ | | ■ |
| Auxiliary audio input jack ⁷ | ■ | ■ | ■ | |
| Auxiliary audio/video input jacks ⁷ | | ■ | ■ | ■ |
| MP3/WMA CD playback capability | ■ | ■ | ■ | ■ |
| Speed-sensitive volume control | | ■ | ■ | ■ |
| Illuminated steering wheel-mounted audio controls | | ■ | | ■ |
| Four speakers | ■ | | | |
| Six speakers | | ■ | ■ | |
| 13 Speakers | | | ■ | ■ |

| Safety/Security | | | | |
|---|---|---|---|---|
| Nissan Advanced Air Bag System with dual-stage supplemental front air bags, seat belt sensors and occupant-classification sensor ⁸ | ■ | ■ | ■ | ■ |
| Driver and front-passenger seat-mounted side-impact supplemental air bags ⁹ | ■ | ■ | ■ | ■ |
| Roof-mounted curtain side-impact supplemental air bags for outboard occupant head protection for all three rows ⁹ | ■ | ■ | ■ | ■ |
| Vehicle Dynamic Control (VDC) ⁹ with Traction Control System (TCS) | ■ | ■ | ■ | ■ |
| Blind Spot Warning (BSW) ¹⁰ | | | | ■ |
| Moving Object Detection (MOD) ¹¹ | | | | ■ |
| 3-point ALR/ELR passenger seat belt system (ELR for driver) | ■ | ■ | ■ | ■ |
| Front-seat Active Head Restraints | ■ | ■ | ■ | ■ |
| LATCH System (Lower Anchors and Tethers for CHildren) | ■ | ■ | ■ | ■ |
| Tire Pressure Monitoring System (TPMS) with Easy-Fill Tire Alert ^{12, 13} | ■ | ■ | ■ | ■ |
| Nissan Vehicle Immobilizer System | ■ | ■ | ■ | ■ |
| Vehicle Security System | ■ | ■ | ■ | ■ |

¹Use regular unleaded fuel with 87 octane. For maximum power, use premium fuel. ²Parking aid/convenience feature. Cannot completely eliminate blind spots. May not detect every object and does not warn of moving objects. Always check surroundings and turn to look behind you before moving vehicle. ³Never program while driving. GPS mapping may not be detailed in all areas or reflect current road status. ⁴Required monthly subscriptions sold separately for each available SiriusXM feature after trial period, and are continuous until you call SiriusXM to cancel. Installation costs, one-time activation fee, other fees and taxes will apply. Each SiriusXM feature availability is dependent upon vehicle model, trim level, packaging, and/or options, and may only be available in select markets. Satellite Radio U.S. service, NavWeather® service, and SiriusXM Travel Link® services (if any of the foregoing features are equipped on vehicle) available only to those 18 or older in the 48 contiguous states and D.C. Fees and programming subject to change. Subscriptions governed by Customer Agreement available at [siriusxm.com](#). ©2015 Sirius XM Radio Inc. Sirius® XM® and all related marks and logos are trademarks of Sirius XM Radio Inc. ⁵Availability of specific features is dependent upon the phone's Bluetooth® support. Please refer to your phone Owner's Manual for details. Bluetooth® word mark and logos are owned by Bluetooth SIG, Inc., and any use of such marks by Nissan is under license. See [NissanUSA.com/bluetooth](#) for details. ⁶Not available with DVD Entertainment System Package ⁷Driving is serious business and requires your full attention. If you have to use the connected device while driving, exercise extreme caution at all times so full attention may be given to vehicle operation. ⁸Air bags are only a supplemental restraint system; always wear your seat belt. Even with the occupant-classification sensor, rear-facing child restraints should not be placed in the front-passenger's seat. All children 12 and under should ride in the rear seat properly secured in child restraints, booster seats, or seat belts according to their size. Air bags will only inflate in certain accidents; see your owner's manual for more details. ⁹VDC, which should remain on when driving except when freeing the vehicle from mud or snow, cannot prevent accidents due to abrupt steering, carelessness, or dangerous driving techniques. ¹⁰Blind Spot Warning is not a substitute for proper lane change procedures. The system will not prevent contact with other vehicles or accidents. It may not detect every vehicle or object around you. ¹¹MOD cannot completely eliminate blind spots and may not detect every object. MOD operates at vehicle speeds below 5 mph. Always check surroundings and turn to look behind you before moving vehicle. ¹²TPMS is not a substitute for regular tire pressure checks. ¹³Vehicle must be on for the Easy-Fill Tire Alert to operate. Bose® is a registered trademark of The Bose Corporation. HomeLink® is a registered trademark of Gentex Corporation. iPod® is a registered trademark of Apple, Inc. All rights reserved. iPod® or other external device not included. 1617528N-10/15-50M-CGI

DIMENSIONS/CAPACITIES/WEIGHTS/MPG

| Exterior Dimensions – Inches | |
|------------------------------|---------------------------|
| Wheelbase | 118.1 |
| Overall length | 200.8 |
| Overall width | 77.6 |
| Overall height | 71.5/73.0 with roof rails |
| Track width (front/rear) | |
| — 16" Wheels | 68.1/68.1 |
| — 18" Wheels | 67.7/67.7 |
| Step-in height | |
| — 16" Wheels/18" Wheels | 15.7/16.1 |

| Interior Dimensions – Inches | |
|---------------------------------|---------------------------------|
| Head room (1st/2nd/3rd Row) | 42.1/41.6/40.0 without moonroof |
| Head room (1st/2nd/3rd Row) | 40.9/39.9/38.0 with moonroof |
| Leg room (1st/2nd/3rd Row) | 43.8/36.7/40.5 |
| Hip room (1st/2nd/3rd Row) | 57.3/66.0/49.6 |
| Shoulder room (1st/2nd/3rd Row) | 64.5/63.2/61.2 |

| Capacities | |
|-------------------------------------|------------------------------------|
| Seating capacity | 7 |
| Interior passenger volume (cu. ft.) | 177.8 without moonroof |
| | 170.9 with moonroof |
| Interior volume index (cu. ft.) | 214.8 (S, SV, SL) without moonroof |
| | 206.2 (SL) with moonroof |
| | 201.6 (Platinum) with moonroof |
| | 210.2 (Platinum) without moonroof |

| | |
|---|-------|
| Cargo volume (cu. ft.) | |
| Permanent rear storage well (S, SV, SL) | 11.4 |
| Permanent rear storage well with | |
| — Bose® audio system (SL, Platinum) | 6.7 |
| All seats in user positions | 25.7 |
| Second row upright, third row folded flat | 63.6 |
| Second row folded, third row folded flat | 108.4 |
| Fuel tank (gals.) | 20.0 |

| Curb Weights – Lbs. | | | | |
|--|----------|----------|----------|----------|
| | S | SV | SL | Platinum |
| Base total | 4,349 | 4,387 | 4,489 | 4,553 |
| 2016 EPA Fuel Economy Estimates | | | | |
| City/Hwy/Combined MPG | S | SV | SL | Platinum |
| | 20/27/23 | 20/27/23 | 20/27/23 | 20/27/23 |
| 2016 EPA fuel economy estimates only. Actual mileage may vary with driving conditions – use for comparison only. | | | | |