



CURT™

The **FIRST** Name
in Towing Products™

GOOSENECK & RV TOWING



GOOSENECK TOWING

They've made the truck that turns the world under its tires and the trailer built to move mountains in a day, but what about the hitch powerful enough to make the connection?



Under-bed designs for minimal truck bed interference



Custom installation kits are made for a vehicle-specific fit



All gooseneck hitch installation kits are made in the USA

GM reserves the right to make changes at any time, without notice, in prices, colors, materials, equipment, features, specifications, models, accessories and availability.

Most Chevrolet Parts and Accessories sold and installed on a Chevrolet vehicle by a Chevrolet Dealer or a Chevrolet Division-approved Accessory Distributor/Installer (ADI) before delivery to the customer are covered under the applicable portion (Bumper-to-Bumper, Powertrain, etc.) of the New Vehicle Limited Warranty. If Chevrolet Accessories are installed after vehicle delivery, or are replaced under the New Vehicle Limited Warranty, they will be covered, parts and labor, for the longer of the following: a) 12 months/12,000 miles (whichever comes first), or b) the balance of the applicable portion of the New Vehicle Limited Warranty. See your dealer for details. Some vehicles are shown with equipment from an independent supplier. GM licensed and Associated Accessories are covered under the accessory-specific manufacturer's warranty and are not warranted by GM or its dealers. GM is not responsible for the safety or quality of independent supplier alterations.

RV TOWING

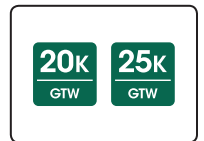
Your customers expect a 5th wheel hitch with the strength and finesse to tow wherever the road leads. CURT¹ offers multiple 5th wheel products to help your customers to Bring It[®].



Thoroughly tested to SAE J2638 protocol for safety



5th wheel hitches mount directly into the truck bed



Capacities offered in 20,000 lbs. and 25,000 lbs.²

¹ Associated Accessories listed are from an independent supplier and are not warranted by GM or its dealers. GM is not responsible for the safety or quality of third-party supplier alterations. For details on the warranty provided by Associated Accessories suppliers, please call the Associated Accessory supplier at the telephone number shown with the accessory listing. Non-GM Warranty. CURT[™] provides a 10-year limited manufacturer's warranty (limited lifetime warranty on selected products). For details on the warranty provided by CURT[™] Manufacturing, please call (877) 287-8634.

² Towing capacity is based on manufacturer specifications and assumed properly equipped base vehicle. Consult your Chevrolet Dealer for details. Maximum trailer weight ratings are calculated assuming a base vehicle, except for any options necessary to achieve the rating, plus driver. The weight of other optional equipment, passenger and cargo will reduce the maximum trailer weight your vehicle can tow.

30K
GTW

DOUBLE LOCK EZr™ GOOSENECK HITCH, INSTALLATION KIT AND WIRING HARNESS KIT¹



Retainer clips secure the bolts supporting the center section while attaching an installation kit



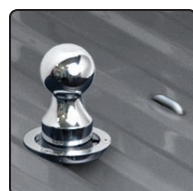
Exclusive center locator saves time



Simply drill up from under the bed



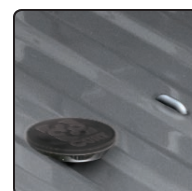
Use the pilot hole for error-free drilling



Ball up, ready for coupling



Ball stored, without rubber cover



Ball protected with included cover

Exclusive Center Locator

- Eliminates the need to measure where the ball hole should be
- Eliminates errors caused by drilling
- **Orange** shavings indicate when to stop drilling the trailer ball hole
- Patent# D685,299 S

Optimum Strength

- Designed to manufacturer's² recommended towing capacity. Never exceed vehicle's max GTW
- Strong, spring-loaded 5/8" safety chain loops and Grade 8 hardware
- Fortified center section
- Meets SAE J2638 testing protocol

EZr™ Installation Kits

- No measuring required - safety chain loop holes are drilled from the underside of the truck bed
- Designed for fast, easy installation
- No need to lower exhaust
- Uses carriage bolts when possible so only one wrench is needed
- Eliminates sheet metal cutting along inside of fender to insert rails

One-Person Installation

- Retainer clips secure the bolts to support the center section while attaching the installation kit

Flip-Over Ball

- Flip-and-store ball helps avoid trailer ball loss and keeps truck bed free of obstruction
- Chrome trim ring for a finished look
- Rubber trim and hole cover provide protection and prevent corrosion

Sturdy Handle

- Heavy-duty 3/8" diameter handle for solid operation

Double Lock Security

- Double-locking pins in trailer ball provide peace of mind

Limited Lifetime Warranty

Part#	Description	Ball Size	EZr Ratings		
19353984	Double Lock EZr gooseneck hitch kit ¹ . Includes EZr gooseneck hitch center section, installation subkit and 7-way electrical wiring extension. Subkit fits Silverado 2500 and 3500 from 2011 to 2016. No drilling required	2 5/16"	Manufacturer's recommended towing capacity ²		

Included Parts

- Rated to vehicle's max gross weight rating²
- Designed for faster, easier installation
- Laser cut for precise fit
- Routes a 7-way RV blade socket into truck bed while retaining use of 7-way RV blade at rear of vehicle



Installation subkit



7-way electrical wiring extension also available individually, see page 3

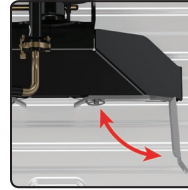


¹ Non-GM Warranty. CURT™ provides a 10-year limited manufacturer's warranty (limited lifetime warranty on selected products). For details on the warranty provided by CURT™ Manufacturing, please call (877) 287-8634.
² Manufacturer's Suggested Retail Price. Tax and installation extra. Price subject to change without notice.

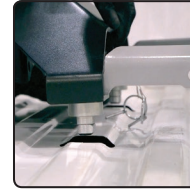
² Towing capacity is based on manufacturer specifications and assumed properly equipped base vehicle. Consult your Chevrolet Dealer for details. Maximum trailer weight ratings are calculated assuming a base vehicle, except for any options necessary to achieve the rating, plus driver. The weight of other optional equipment, passenger and cargo will reduce the maximum trailer weight your vehicle can tow.

OEM-COMPATIBLE 5TH WHEEL KITS¹

- Converts any CURT¹ 5th wheel hitch head to fit Chevrolet OEM under-bed hitch platform
- Quarter-turn anchoring system for quick installation and removal
- Anchors can be adjusted to eliminate chocking between the legs and under-bed rails
- Durable carbide powder coat finish
- Capacity limited to lowest-rated towing component²
- Limited lifetime warranty



Quarter-turn anchor system is easy to install and remove



Drop the legs into the truck bed's anchoring system



Close the anchor levers to lock the legs into place

20K
GTW

**Q20
HITCH^{1,2}**



25K
GTW

**Q25
HITCH^{1,2}**



Included Part

- Routes a 7-way RV blade socket into truck bed while retaining use of 7-way RV blade at rear of vehicle



7-way electrical wiring extension

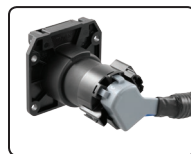
Part#	Description		
19352638	Q20 5th wheel with direct mount OEM-compatible legs. Includes Q20 5th wheel hitch head, Chevrolet OEM-compatible legs and 7-way electrical wiring extension. Fits 2016 Silverado 2500 and 3500. No drilling required		
19352639	Q25 5th wheel with direct mount OEM-compatible legs. Includes Q25 5th wheel hitch head, Chevrolet OEM-compatible legs and 7-way electrical wiring extension. Fits 2016 Silverado 2500 and 3500. No drilling required		

CUSTOM VEHICLE-TO-TRAILER WIRING HARNESS EXTENSION¹

- Adds an additional 7-way RV blade socket to the truck bed while retaining use of the existing 7-way RV blade socket
- Makes the electrical connections of gooseneck and 5th wheel trailers easy by plugging into the factory harness



Route 7-way socket into truck bed (7')



Right-angle plug for easy installation



Part#	Description	Install Time	MSRP ³
19352640	Custom vehicle-to-trailer wiring harness extension	30-60 minutes	\$69.00

SOURCED BY
 ACCESSORIES

¹ Non-GM Warranty. CURT[™] provides a 10-year limited manufacturer's warranty (limited lifetime warranty on selected products). For details on the warranty provided by CURT[™] Manufacturing, please call (877) 287-8634.
³Manufacturer's Suggested Retail Price. Tax and installation extra.
Price subject to change without notice.

²Towing capacity is based on manufacturer specifications and assumed properly equipped base vehicle. Consult your Chevrolet Dealer for details. Maximum trailer weight ratings are calculated assuming a base vehicle, except for any options necessary to achieve the rating, plus driver. The weight of other optional equipment, passenger and cargo will reduce the maximum trailer weight your vehicle can tow.

Q-SERIES 5TH WHEEL HITCHES & KITS¹

Part#	Description		
5th Wheel Hitch			
19330275	Q20 5th wheel hitch with standard legs ^{1,3}		
5th Wheel Hitch Kits			
19353369	Q20 5th wheel hitch with standard legs ^{1,3} . Includes base rails, installation kit and 7-way electrical wiring extension. Installation brackets fit Silverado 2500 and 3500 from 2011 to 2016. No drilling required		
19353370	Q20 5th wheel hitch with R20 roller unit ^{1,3} . Includes base rails, installation kit and 7-way electrical wiring extension. Installation brackets fit Silverado 2500 and 3500 from 2011 to 2016. No drilling required		
19353371	Q25 5th wheel hitch with standard legs ^{1,3} . Includes base rails, installation kit and 7-way electrical wiring extension. Installation brackets fit Silverado 2500 and 3500 from 2011 to 2016. No drilling required		

20K
GTW

**Q20
HITCH^{1,3}**



25K
GTW

**Q25
HITCH^{1,3}**



20K
GTW

**Q20 HITCH
AND ROLLER^{1,3}**



Key Features

- Spherical axial bearing ensures smooth, quiet towing and allows for unimpeded head movement
- Dual jaws provide 360° kingpin contact
- Coupling indicator visible from vehicle cab
- Self-aligning head with wide opening for easy coupling
- Lockable, short-throw, single-handle operation
- Mounts to industry-standard rails
- Three grease fittings for easy lubrication
- Includes polyethylene lube plate
- Meets SAE J2638 testing protocol
- Durable carbide powder coat finish
- Solid, non-binding rods (roller)
- True rolling unit – not just a slider (roller)
- 12" travel – most competitive models only offer 10" (roller)
- Uses wheels to bear the weight, unlike competitive models that use hollow rods (roller)
- **Ten-year limited warranty¹**

Included Parts

- Adds an additional 7-way RV blade socket to the truck bed while retaining use of the existing 7-way RV blade socket



7-way electrical wiring extension also available individually, see page 3

- Base rails can be used with all CURT 5th wheels and rollers
- Custom installation brackets reduce or eliminates drilling, which can cut installation times in half



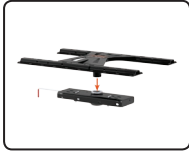
¹ Ⓒ Non-GM Warranty. CURT™ provides a 10-year limited manufacturer's warranty (limited lifetime warranty on selected products). For details on the warranty provided by CURT™ Manufacturing, please call (877) 287-8634.
² Manufacturer's Suggested Retail Price. Tax and installation extra.
Price subject to change without notice.

³ Towing capacity is based on manufacturer specifications and assumed properly equipped base vehicle. Consult your Chevrolet Dealer for details. Maximum trailer weight ratings are calculated assuming a base vehicle, except for any options necessary to achieve the rating, plus driver. The weight of other optional equipment, passenger and cargo will reduce the maximum trailer weight your vehicle can tow.

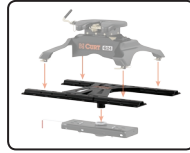
20k
GTW

X5 GOOSENECK TO 5TH WHEEL ADAPTER PLATE¹

- Converts Double Lock and competitive gooseneck hitches to 5th wheel rails
- For use with CURT¹ and other common 5th wheel hitches up to 20,000 lbs.²



Replaces Double Lock trailer ball



Quickly provides 5th wheel rails



Accepts 5th wheel hitches and rollers

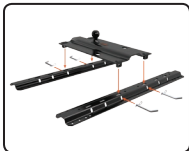


Part#	Shank Style	Fits		
19330276	Round shank	CURT ¹ EZr 60611, 60612, 60619		

25k
GTW

5TH WHEEL RAIL BENT PLATE GOOSENECK HITCH¹

- Four-pin installation and removal for easy access to truck bed
- Bent plate includes pins & clips, safety chain hookups and welded trailer ball with 3" offset from front to rear
- Mounts to all industry-standard 5th wheel rails



Attaches to 5th wheel rails



Bent plate provides 3" offset



Part#	Ball Size	Ball Offset	Finish	GTW ²		
19328695	2 5/16"	3"	Carbide	25,000 lbs.		

CUSTOM BRACKETS AND BASE RAILS KIT¹

- Base rails can be used with all CURT 5th wheels and rollers
- Custom installation brackets reduce or eliminates drilling, which can cut installation times in half
- Routes a 7-way RV blade socket into truck bed while retaining use of 7-way RV blade at rear of vehicle

Included Parts



7-way electrical wiring extension also available individually, see page 3



Base rails shown attached to installation brackets

Part#	Description		
19353372	Silverado 2500 / 3500 base rails kit. Includes base rails, custom brackets and 7-way electrical wiring extension		

SOURCED BY
 ACCESSORIES

¹ Non-GM Warranty. CURT[™] provides a 10-year limited manufacturer's warranty (limited lifetime warranty on selected products). For details on the warranty provided by CURT[™] Manufacturing, please call (877) 287-8634.
²Manufacturer's Suggested Retail Price. Tax and installation extra.
Price subject to change without notice.

² Towing capacity is based on manufacturer specifications and assumed properly equipped base vehicle. Consult your Chevrolet Dealer for details. Maximum trailer weight ratings are calculated assuming a base vehicle, except for any options necessary to achieve the rating, plus driver. The weight of other optional equipment, passenger and cargo will reduce the maximum trailer weight your vehicle can tow.

EXTENDED VIEW TOW MIRROR¹

- Fully adjustable, can be used horizontally or vertically
- Fits left or right side truck and SUV mirrors



Front



Back

Part#	Mirror Dimensions	Description		
19302668	7 1/2" x 5"	For trucks and SUVs		

TRIFLEX™ BRAKE CONTROL AND HARNESS KITS¹

TriFlex Features

- Triple-axis, motion-sensing accelerometer for highly responsive, smooth stops
- Third axis provides precise, dynamic brake power adjustment when going up or down an incline
- Nine levels of sensitivity adjustment for varying trailer loads or driving conditions
- Digital display shows power adjustments in 0.1 increments
- Operates 2 - 8 brakes (1 - 4 axles)
- User-selectable options on manual activation:
 - Power output (100% or limited to pre-set power)
 - Trailer brake light activation
- Compatible with low voltage or pulse-width modulation (PWM) systems
- Compact size: 3 1/4" wide, 4" deep, 7/8" tall
- Mounts in a variety of angles above or below the dash to increase unit accessibility and display readability
- Automatic leveling and calibration
- Mounting hardware included



TriFlex
brake control



Harness included
with 19330662

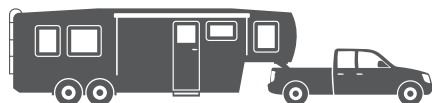


Harness included
with 19330154

Part#	Includes		
19330154	TriFlex brake control unit and brake control harness for Chevrolet Silverado from 2014 to 2016		
19330662	TriFlex brake control unit and splice-in quick plug with 24" pigtails		

Brake Control Harness Features

- Quick plug harness installs in less than 10 minutes
- Wire colors match standard brake control harnesses



4.0 Your power adjustment setting



4.0 ▶ **3.2** Automatic adaptive power output values



4.0 ▶ **5.3** Automatic adaptive power output values

Note: Values represented are for illustration only. The actual pre-set and adaptive values may differ from those shown here.



SOURCED BY



ACCESSORIES

¹ Non-GM Warranty. CURT™ provides a 10-year limited manufacturer's warranty (limited lifetime warranty on selected products). For details on the warranty provided by CURT™ Manufacturing, please call (877) 287-8634.
² Manufacturer's Suggested Retail Price. Tax and installation extra. Price subject to change without notice.

GM, the GM logo, Chevrolet and the Chevrolet logos, and the slogans, emblems, vehicle model names, vehicle body designs and other marks appearing in this brochure are the trademarks and/or service marks of General Motors, its subsidiaries, affiliates or licensors. ©General Motors.