

MALIBU 2020

CHEVROLET



YOUR REQUEST FOR EXCELLENCE, BEAUTIFULLY FULFILLED.

With a sophisticated appearance and remarkable driving dynamics, the 2020 Malibu is ready to take you wherever the road leads. The turbocharged RS makes an emphatic statement, and Premier surrounds you with all-encompassing luxuries. Prepare to be impressed, because everything about Malibu reflects your own high expectations for excellence.

FIND NEW ROADS™



At left: Malibu Premier in Shadow Grey Metallic (extra-cost colour) with available features. At right: Malibu RS in Cajun Red Tintcoat (extra-cost colour).

MODELS

LS

Here's the style, room and craftsmanship you expect in an award-winning mid-size car.

LS keeps you connected with Apple CarPlay®¹ and Android Auto™² compatibility and an 8-in. diagonal colour touch-screen display. And you'll enjoy the poised performance of a 1.5L turbocharged engine with Direct Injection and a Continuously Variable Transmission (CVT).

RS

Malibu RS makes a compelling statement as it puts an artistic spin on the sport sedan.

It is impossible to ignore the blacked-out sport grille, Black bowtie emblems, exclusive 18-in. wheels, rear spoiler and dual exhaust outlets with polished tips.

Inside RS, a power 8-way driver seat with power lumbar control and a leather-wrapped steering wheel and shifter are your invitation to command the road.

Top: Malibu LS in Shadow Grey Metallic (extra-cost colour).

Bottom: Malibu RS in Cajun Red Tintcoat (extra-cost colour).



¹ Vehicle user interface is a product of Apple and its terms and privacy statements apply. Requires compatible iPhone and data plan rates apply. ² Vehicle user interface is a product of Google and its terms and privacy statements apply. Requires the Android Auto app on Google Play and an Android compatible smartphone running Android 5.0 Lollipop or higher. Data plan rates apply.

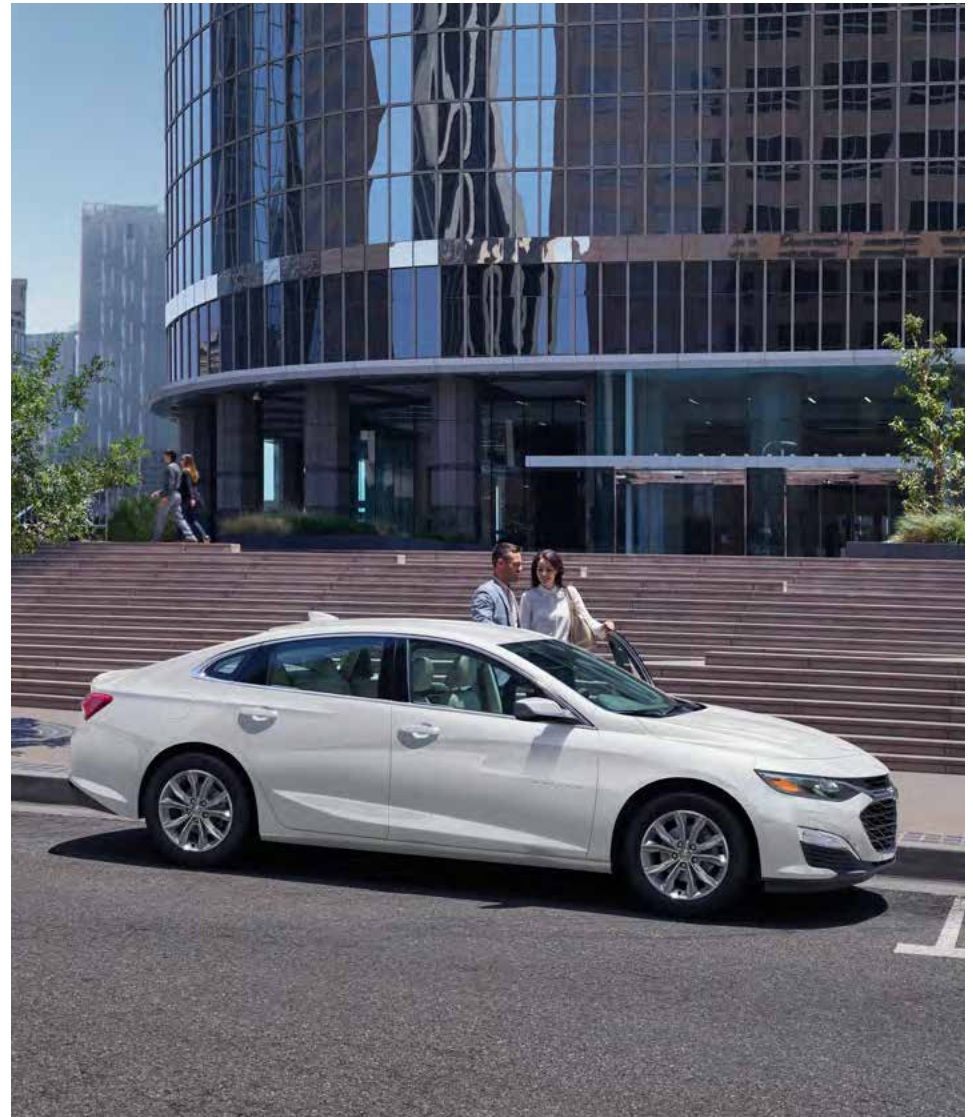
MODELS

LT

Malibu LT provides elegant touches of style and luxury designed to leave a lasting impression.

Signature LED daytime running lamps and LED tail lamps attract attention, while attractive 17-in. aluminum wheels catch the eye. Conveniences include a remote vehicle starter system, dual-zone climate controls and heated front bucket seats.

Malibu LT in Summit White with available features.



MODELS

PREMIER

Upscale details make a lasting impression. The sleek, sculpted Premier is – in every way – top of the line.

At the heart of it, a 2.0L turbocharged engine and 9-speed automatic transmission are poised for performance. The comprehensive roster of standard safety and driver assistance features includes Adaptive Cruise Control – Advanced¹ and Lane Keep Assist with Lane Departure Warning¹.

The well-appointed interior features heated and ventilated front bucket seats and heated rear outboard seats. Perforated leather-appointed seating surfaces, a Bose 9-speaker premium audio system and a power tilt-sliding sunroof with a fixed rear skylight add to the ambiance.

Malibu Premier in Shadow Grey Metallic (extra-cost colour).



¹ Read the vehicle Owner's Manual for important feature limitations and information.



Malibu Premier interior
in Light Wheat with
Dark Atmosphere accents.

INTERIOR DESIGN

EVERY SEAT, FIRST CLASS.

Whether you are driving across town or across the country, the seats in Malibu are contoured for optimal support. The **power 8-way driver seat**, standard on RS, LT and Premier, puts you in full control of your comfort.

Satin chrome is generously displayed throughout the Malibu interior for a clean, sophisticated attitude. Soft touch components exude an impressively tailored appearance.

Rear-seat passengers were kept top of mind in Malibu. That's why the design includes **generous rear-seat legroom** and rear doors that open wide to help make entry and exit easy.

Rear Seat Reminder¹ activates when the rear doors are opened and closed up to 10 minutes before or anytime while your vehicle is on, so when you turn off the vehicle under certain conditions, you will get a reminder to double-check for valuables left behind.

¹ Does not detect people or items. Always check rear seat before exiting.

Malibu RS interior in Jet Black.



INTERIOR DESIGN

EVERY DRIVE, EXCEPTIONAL.

Inside Malibu RS, sculpted Jet Black Premium Cloth bucket seats combine with a **leather-wrapped shifter and steering wheel** to enhance your driving experience.

An **acoustic-laminated windshield**, a custom dash panel with strategic applications of laminated steel, and triple-sealed doors are just a few of the standard features that help keep outside noise where it belongs.



TECHNOLOGY

THE MORE YOU KNOW, THE MORE YOU'LL LOVE.

A **Driver Information Centre** with an 8-in. diagonal reconfigurable display is standard on Premier. It allows you to choose from two screens and have at-a-glance access to important features and data.

With the **Chevrolet Infotainment 3 system**¹, you can easily make hands-free calls, play music and access contacts from your compatible smartphone via the 8-in. diagonal touch-screen display or through voice commands.

Teen Driver technology helps encourage better driving habits by providing an in-vehicle report card that monitors the frequency of certain available safety technology feature activations, providing seat belt

reminders including Buckle to Drive and muting the audio until front-seat occupants are buckled, and giving warnings when the vehicle is travelling over a predetermined speed.

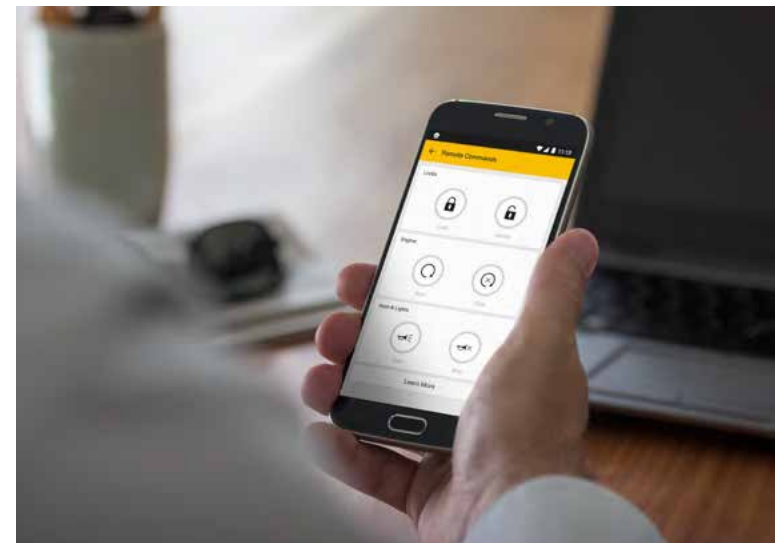
¹ Chevrolet Infotainment System functionality varies by model. Full functionality requires compatible Bluetooth and smartphone, and USB connectivity for some devices. Data plan rates may apply.

Wireless charging¹: Standard on Premier.

Driver Information Centre with 8-in. diagonal reconfigurable display. Standard on Premier.

Apple CarPlay² integration for your iPhone[®] (shown) and Android Auto^{™3} compatibility.

myChevrolet[®] App⁴ available to download, includes remote vehicle start capability⁵ on LT and Premier.



¹ The system wirelessly charges one compatible mobile device. Some devices require an adaptor or back cover. See myChevrolet.ca for more information. ² Vehicle user interface is a product of Apple and its terms and privacy statements apply. Requires compatible iPhone and data plan rates apply. ³ Vehicle user interface is a product of Google and its terms and privacy statements apply. Requires the Android Auto app on Google Play and an Android compatible smartphone running Android 5.0 Lollipop or higher. Data plan rates apply. ⁴ Available on select Apple and Android devices. Service availability, features and functionality are subject to limitations and vary by model and/or vehicle configuration, device and the plan in which you are enrolled. Device data connection required. Visit onstar.ca for more details. ⁵ Requires subscription to Remote Access Plan or Premium Access Plan. Services are subject to user terms and limitations and vary by model and/or vehicle configuration. Remote start requires GM factory-installed and enabled remote start system. Visit onstar.ca for more details.

Malibu Premier in Northsky Blue
Metallic (extra-cost colour)
with available features.

PERFORMANCE

ENGINEERED BY PERFECTIONISTS.

The **2.0L turbo engine** delivers 250 horsepower and 260 lb.-ft. of torque with the 9-speed automatic transmission. This combination delivers estimated fuel consumption ratings of 7.4 L/100 km highway and 10.5 L/100 km city¹. Standard on Premier.

The **1.5L turbo engine** is paired with a Continuously Variable Transmission for power and efficiency. This engine offers 163 horsepower, 184 lb.-ft. of torque and estimated fuel consumption ratings of 6.6 L/100 km highway and 8.2 L/100 km city¹.

Variable-effort **Electric Power Steering (EPS)** uses energy only when steering effort is applied. EPS feels light but agile, providing greater assistance at low speeds and tighter control when you're cruising at highway speeds.

The **MacPherson strut front suspension** and independently tuned 4-link rear suspension are precision calibrated for impressive ride and handling.

¹ Fuel consumption estimates based on GM testing in accordance with Government of Canada approved test methods. Refer to vehicles.nrcan.gc.ca for details. Your actual fuel consumption will vary.

SAFETY AND DRIVER ASSISTANCE

READY AND VIGILANT.



Adaptive Cruise Control – Advanced. Using sensors that include radar technology, this feature can automatically adapt cruise control speed to maintain a following gap to vehicles detected ahead. Standard on Premier.



Front Pedestrian Braking. At speeds below 80 km/h, if an imminent collision with a pedestrian directly ahead is detected, the feature can alert you and can even apply last-second emergency braking. Performance is limited at night. Standard on Premier, available on LT.



Automatic Emergency Braking. At speeds below 80 km/h, if an imminent front-end collision is detected with a vehicle you are following, the feature can alert you and can automatically apply hard emergency braking or enhance driver hard braking. Available on LT.



Enhanced Automatic Emergency Braking. If an imminent front-end collision is detected with a vehicle you are following, the feature can alert you and can automatically apply hard emergency braking or enhance driver hard braking. Standard on Premier.



Following Distance Indicator and Forward Collision Alert. These features monitor how close your vehicle is to the detected vehicle in front of you and can alert you to a potential crash. Standard on Premier, available on LT.



Lane Keep Assist with Lane Departure Warning. At speeds above 60 km/h, this feature monitors road lines when identifiable and can gently turn the steering wheel to help keep the vehicle in its lane or provide alerts if a lane marker is unintentionally crossed. Standard on Premier, available on LT.



Lane Change Alert with Side Blind Zone Alert. This feature can provide side mirror alerts when it detects fast-approaching vehicles in adjacent lanes as well as moving vehicles in the side mirror blind zones. Standard on Premier, available on LT.



Rear Vision Camera. When travelling in Reverse at low speeds, this feature helps provide a view of the area immediately behind your Malibu. Standard on all models.



Rear Cross Traffic Alert. This feature can alert you to detected vehicles crossing behind your Malibu when backing up. Standard on Premier, available on LT.



Rear Park Assist. When travelling in Reverse at low speeds, this feature can provide distance alerts when it detects certain stationary objects in close proximity behind the vehicle. Available on LT.



Automatic Parking Assist. Helps you park by automatically steering the vehicle into a detected parking space while you follow text commands, select gears, and perform all braking and acceleration. Standard on Premier.



IntelliBeam® headlamps. When oncoming headlamps are sensed or when tail lamps are detected, this feature intuitively adjusts between low and high beams. Standard on Premier, available on LT.

Safety starts with you. Safety or driver assistance features are no substitute for the driver's responsibility to operate the vehicle in a safe manner. The driver should remain attentive to traffic, surroundings and road conditions at all times. Visibility, weather and road conditions may affect feature performance. Read the vehicle Owner's Manual for more important feature limitations and information.



EXTERIOR COLOURS



GA0 – Northsky Blue Metallic^{1,2,3}



GAN – Silver Ice Metallic



GAZ – Summit White



GB8 – Mosaic Black Metallic¹



GCG – Stone Grey Metallic^{1,2,3}



GJI – Shadow Grey Metallic¹



GLR – Black Cherry Metallic¹



GPJ – Cajun Red Tintcoat^{1,2}

¹ Available at extra cost. ² Not available on LS. ³ Not available on RS.

MODELS



LS Malibu LS includes these features:

MECHANICAL

Brakes – 4-wheel disc brakes with Duralife® brake rotors, Anti-lock Braking System (ABS), Brake Assist, cornering brake control and Hill Start Assist

Engine – 1.5L turbocharged DOHC I-4 with Variable Valve Timing (VVT), Direct Injection and Auto Stop/Start feature

StabiliTrak® – Electronic Stability Control System with Traction Control

Steering – power, electric, rack-and-pinion

Suspension – 4-wheel independent; front, MacPherson strut; rear, 4-link

Transmission – Continuously Variable Transmission (CVT)

EXTERIOR

Daytime running lamps – integral to headlamps

Fuel filler – capless fuelling

Glass – acoustic-laminated windshield

Headlamps – halogen, automatic on/off with automatic delay

Mirrors – power remote control with Black caps

Tires – P205/65R16 all-season¹

INTERIOR

Air conditioning – manual, single-zone with cabin air filter

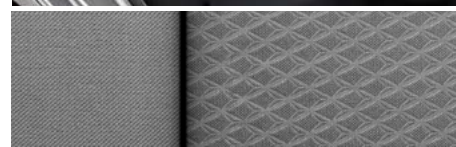
Audio – 6-speaker system

Cruise control – electronic with set and resume speed

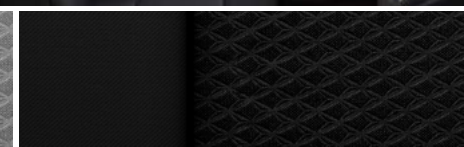
Door locks – power, programmable with lock-out protection and manual rear door child security

Entertainment – Chevrolet Infotainment 3 system¹ with 8-in. diagonal colour touch-screen, AM/FM stereo, Bluetooth® audio streaming² for two active devices, voice command pass-through to compatible phone, and Apple CarPlay^{®3} and Android Auto™⁴ compatibility

Keyless Open and Start – includes extended-range Remote Keyless Entry



Medium Ash Grey Premium Cloth



Jet Black Premium Cloth (shown)



16" aluminum wheels
Standard on LS

INTERIOR (CONTINUED)

Lighting – front-seat reading lamps, overhead courtesy lamp and illuminated trunk area

Media – USB ports⁵; one type-A and one type-C, and auxiliary input jack in front centre stack storage area

Rear Vision Camera⁶ – HD

Seats – manual 6-way driver and front-passenger adjusters

Steering column – manual tilt and telescopic


Steering wheel – 3-spoke, deluxe with mounted audio, cruise and phone controls

Theft-deterrent system – unauthorized entry

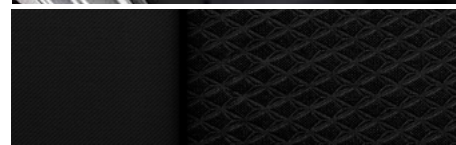
Tire Pressure Monitoring System – with Tire Fill Alert (does not monitor spare tire)

Visors – driver and front passenger, covered vanity mirrors

Windows – power with express-down, all windows

¹ Chevrolet Infotainment System functionality varies by model. Full functionality requires compatible Bluetooth and smartphone, and USB connectivity for some devices. Data plan rates may apply. ² Visit my.gm.ca/Chevrolet/en/learnAbout/bluetooth for more information. Full Bluetooth feature functionality varies by device, model and/or vehicle configuration, and software version. ³ Vehicle user interface is a product of Apple and its terms and privacy statements apply. Requires compatible iPhone and data plan rates apply. ⁴ Vehicle user interface is a product of Google and its terms and privacy statements apply. Requires the Android Auto app on Google Play and an Android compatible smartphone running Android 5.0 Lollipop or higher. Data plan rates apply. ⁵ Not compatible with all devices. ⁶ Read the vehicle Owner's Manual for important feature limitations and information. [†] All-season tires may not satisfy winter tire requirements in all regions of the country. Tires specifically designed for severe winter conditions and marked with the "winter tire" symbol  may be required during certain months or in certain regions. Contact your Provincial, Municipal or local road authority for information regarding which tires are required in your particular area.

MODELS (CONTINUED)



Jet Black Premium Cloth



18" aluminum wheels
Standard on RS

RS In addition to or replacing LS features, RS includes:

MECHANICAL

Exhaust – dual-outlet with polished tips

EXTERIOR

Mirrors – power remote control with body-colour caps

RS accents – Black grille inserts with chrome surround, Black Chevrolet bowtie emblems and Black Malibu badges

Spoiler – rear


Tires – P245/45R18 all-season†

INTERIOR

Seat – power 8-way driver adjuster with power lumbar control

Shift knob – leather-wrapped

Steering wheel – leather-wrapped

† All-season tires may not satisfy winter tire requirements in all regions of the country. Tires specifically designed for severe winter conditions and marked with the “winter tire” symbol  may be required during certain months or in certain regions. Contact your Provincial, Municipal or local road authority for information regarding which tires are required in your particular area.

MODELS (CONTINUED)



LT In addition to or replacing LS features, LT includes:

EXTERIOR

Daytime running lamps – LED

Mirrors – power remote control, heated with body-colour caps

Tail lamps – LED

Tires – P225/55R17 all-season¹

INTERIOR

Air conditioning – automatic, dual-zone with individual climate settings for driver and front passenger and cabin air filter

Lighting – rear-seat reading lamps

Seat – power 8-way driver adjuster with power lumbar control

Seats – heated driver and front passenger

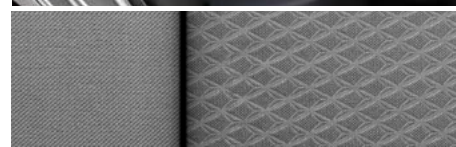
SiriusXM[®]1 – All Access Package with 3-month trial subscription

Vehicle starter system – remote

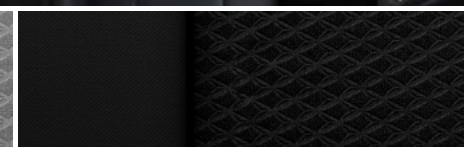
Vents – rear console

Visors – driver and front passenger, covered illuminated vanity mirrors

Windows – power with driver express-up/-down, all others express-down



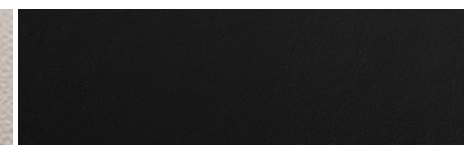
Medium Ash Grey Premium Cloth



Jet Black Premium Cloth



Light Wheat Leather-Appointed Seating Surfaces²



Jet Black Leather-Appointed Seating Surfaces² (shown)



17" aluminum wheels
Standard on LT




19" Black-painted aluminum wheels with Red accents
Included on LT with Redline Edition



19" Black-painted aluminum wheels
Included on LT with Midnight Edition

¹ Available in 10 Canadian provinces, 3 territories and the 48 contiguous United States. Subscription sold separately after trial period. If you decide to continue your service at the end of your trial subscription, the plan you choose will automatically renew and bill at then-current rates until you call 1-888-539-7474 to cancel. Other fees and taxes will apply. All fees and programming subject to change. See the Customer Agreement for complete terms at siriusxm.ca/terms.

² Requires available Leather Package. † All-season tires may not satisfy winter tire requirements in all regions of the country. Tires specifically designed for severe winter conditions and marked with the "winter tire" symbol  may be required during certain months or in certain regions. Contact your Provincial, Municipal or local road authority for information regarding which tires are required in your particular area.

MODELS (CONTINUED)



PREMIER In addition to or replacing LT features, Premier includes:

MECHANICAL

Engine – 2.0L turbocharged DOHC I-4 with Variable Valve Timing (VVT) and Direct Injection

Exhaust – dual-outlet with polished tips

Transmission – 9-speed automatic with overdrive

EXTERIOR

Headlamps – LED

IntelliBeam headlamps – automatic high beam on/off

Mirrors – power remote control, heated with integrated turn signal indicators and chrome caps

Tires – P245/40R19 all-season¹

INTERIOR

Adaptive Cruise Control – Advanced¹

Audio – Bose premium 9-speaker system

Automatic Parking Assist¹

Enhanced Automatic Emergency Braking¹

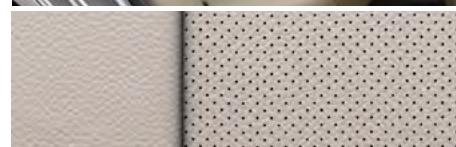
Entertainment – Chevrolet Infotainment 3 Plus system² with Navigation;³ includes 8-in. diagonal HD colour touch-screen, Connected Navigation;⁴ AM/FM stereo, Bluetooth® audio streaming⁵ for two active devices, Apple CarPlay®⁶ and Android Auto™⁷ compatibility, enhanced voice recognition and in-vehicle apps⁸

Following Distance Indicator¹ and Forward Collision Alert¹

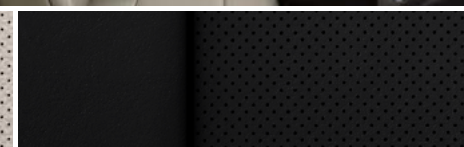
Front Pedestrian Braking¹

Lane Change Alert with Side Blind Zone Alert¹

Lane Keep Assist with Lane Departure Warning¹



Light Wheat Perforated Leather-Appointed Seating Surfaces (shown)



Jet Black Perforated Leather-Appointed Seating Surfaces



19" aluminum wheels
Standard on Premier

INTERIOR (CONTINUED)

Memory – recalls two pre-sets for power driver seat and exterior mirrors

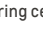
Rear Cross Traffic Alert¹

Seat – power 6-way front-passenger adjuster with power lumbar control

Seats – ventilated driver and front passenger; heated rear outboard seating positions

Steering wheel – heated, leather-wrapped

Sunroof – power, tilt-sliding, with fixed rear skylight and sunshade

¹ Read the vehicle Owner's Manual for important feature limitations and information. ² Chevrolet Infotainment System functionality varies by model. Full functionality requires compatible Bluetooth and smartphone, and USB connectivity for some devices. Data plan rates may apply. ³ Detailed map coverage is available for most major urban areas of the United States and for certain metropolitan areas of Canada (Vancouver, Calgary, Edmonton, Winnipeg, Windsor, London, Toronto, Ottawa, Montreal, Quebec City and Halifax). Coverage is significantly limited outside these areas. ⁴ Requires subscription to OnStar Guidance Plan, Premium Access Plan or Navigation Add-On. Connected Navigation and Real-time Points of Interest (POI) only available on properly equipped vehicles. Services are subject to user terms and limitations and vary by model and/or vehicle configuration. Visit onstar.ca for more details. ⁵ Visit my.gm.ca/Chevrolet/en/learnAbout/bluetooth for more information. Full Bluetooth feature functionality varies by device, model and/or vehicle configuration, and software version. ⁶ Vehicle user interface is a product of Apple and its terms and privacy statements apply. Requires compatible iPhone and data plan rates apply. ⁷ Vehicle user interface is a product of Google and its terms and privacy statements apply. Requires the Android Auto app on Google Play and an Android compatible smartphone running Android 5.0 Lollipop or higher. Data plan rates apply. ⁸ Additional data plan rates may apply. Available on select GM vehicles with compatible hardware. Third-party trademarks are the property of their respective third-party owners and used under agreement. Visit onstar.ca for service limitations, availability and service plan details. Requires active connected vehicle services and data plan or connection to an external Wi-Fi Hotspot. Vehicle data plans provided by AT&T or its local service provider. Services are subject to user terms and limitations. Visit onstar.ca for more details. [†] All-season tires may not satisfy winter tire requirements in all regions of the country. Tires specifically designed for severe winter conditions and marked with the "winter tire" symbol  may be required during certain months or in certain regions. Contact your Provincial, Municipal or local road authority for information regarding which tires are required in your particular area.

SPECIFICATIONS

● STANDARD ○ AVAILABLE – NOT AVAILABLE

	LS	RS	LT	PREMIER
SAFETY & SECURITY				
Airbags ¹ – frontal and knee airbags for driver and front passenger; seat-mounted side-impact airbags and head-curtain airbags for front and rear outboard seating positions; includes Passenger Sensing System for frontal passenger airbag	●	●	●	●
Automatic Emergency Braking ² (requires available LT Plus Package)	–	–	○	–
Enhanced Automatic Emergency Braking ²	–	–	–	●
Automatic Parking Assist ²	–	–	–	●
Door locks – manual rear door, child security	●	●	●	●
Following Distance Indicator ² (requires available LT Plus Package on LT)	–	–	○	●
Forward Collision Alert ² (requires available LT Plus Package on LT)	–	–	○	●
Front Pedestrian Braking ² (requires available LT Plus Package on LT)	–	–	○	●
Lane Change Alert with Side Blind Zone Alert ² (requires available LT True North Edition or LT Plus Package on LT)	–	–	○	●
Lane Keep Assist with Lane Departure Warning ² (requires available LT Plus Package on LT)	–	–	○	●
OnStar Safety & Security Plan coverage ³ for 1 month from the trial activation date, which includes Automatic Crash Response, Stolen Vehicle Assistance, Roadside Assistance and Turn-by-Turn Navigation	●	●	●	●
Rear Cross Traffic Alert ² (requires available LT True North Edition or LT Plus Package on LT)	–	–	○	●
Rear Park Assist ² (requires available LT True North Edition or LT Plus Package)	–	–	○	–
Rear Vision Camera ² – HD	●	●	●	●
Safety restraints – 3-point belts for all seating positions and front seat belt pre-tensioners	●	●	●	●
– LATCH system (Lower Anchors and Tethers for Children), for child restraint systems	●	●	●	●
StabiliTrak – Electronic Stability Control System	●	●	●	●
Teen Driver technology	●	●	●	●
Theft-deterrent system – electronic immobilizer	●	●	●	●
– unauthorized entry	●	●	●	●
Tire Pressure Monitoring System – with Tire Fill Alert (does not monitor spare tire)	●	●	●	●
Traction Control – electronic, full-function, all-speed	●	●	●	●

	LS	RS	LT	PREMIER
MECHANICAL				
Battery – maintenance-free with run-down protection	●	●	●	●
Brakes – 4-wheel disc brakes with Duralife rotors	●	●	●	●
– 4-wheel Anti-lock Braking System (ABS), Brake Assist, cornering brake control and Hill Start Assist	●	●	●	●
– manual parking brake	●	●	●	–
– electronic parking brake	–	–	–	●
Engine – 1.5L turbocharged DOHC 4-cylinder with Variable Valve Timing (VVT) and Direct Injection; 163 hp @ 5700 rpm, 184 lb.-ft. of torque @ 2500-3000 rpm	●	●	●	–
– 2.0L turbocharged DOHC 4-cylinder with Variable Valve Timing (VVT) and Direct Injection; 250 hp @ 5300 rpm, 260 lb.-ft. of torque @ 2000-5000 rpm	–	–	–	●
– Auto Stop/Start feature	●	●	●	●
Engine block heater	○	○	○	○
Exhaust – aluminized stainless steel	●	●	●	●
– single-outlet	●	–	●	–
– dual-outlet with bright tips	–	●	–	●
Steering – power, electric, rack-and-pinion	●	●	●	●
Suspension – 4-wheel independent; front, MacPherson strut; rear, 4-link	●	●	●	●
Transmission – Continuously Variable Transmission (CVT)	●	●	●	–
– 9-speed automatic with overdrive and manual mode	–	–	–	●
EXTERIOR				
Antenna – Black	●	–	–	–
– body-colour	–	●	●	●
Door handles – body-colour	●	●	●	–
– chrome with body-colour insert	–	–	–	●
Emblems – Black Chevrolet bowtie, front and rear (requires available Midnight Edition or Redline Edition on LT)	–	●	○	–
Fuel filler – capless fuelling	●	●	●	●
Glass – acoustic-laminated windshield	●	●	●	●
– solar-absorbing, tinted	●	●	●	●
Grille – Black inserts with chrome surround	–	●	–	–
Lighting – daytime running lamps, integral to headlamps	●	●	–	–
– LED daytime running lamps	–	–	●	●
– halogen headlamps	●	●	●	–
– LED headlamps	–	–	–	●
– automatic on/off with automatic delay	●	●	●	●
– IntelliBeam headlamps – automatic high beam on/off (requires available LT Plus Package on LT)	–	–	○	●
– LED tail lamps	–	–	●	●


1 A NOTE ON CHILD SAFETY: Always use seat belts and the correct child restraint for your child's age and size, even with airbags. Even in vehicles equipped with the Passenger Sensing System, children are safer when properly secured in a rear seat in the appropriate infant, child or booster seat. Never place a rear-facing infant restraint in the front seat of any vehicle equipped with an active frontal airbag. See your vehicle Owner's Manual and the child safety seat instructions for more safety information. **2** Read the vehicle Owner's Manual for important feature limitations and information. **3** Properly equipped Chevrolet vehicles are eligible for 1 month of Connected Services trial and OnStar Safety & Security coverage starting at trial activation date; includes emergency and navigation services, Connected Navigation, the Remote Access Plan, plus a 3 GB or 1-month (whichever comes first) data plan trial. Services subject to user terms and limitations; capabilities vary by model and/or vehicle configuration; visit onstar.ca for details. Data plans offered by AT&T or its local service provider. Availability subject to change. GM Canada may modify, extend or terminate offers for any reason, in whole or in part, at any time, without notice. Requires vehicle electrical system (including battery), wireless service and GPS satellite signal to be available and operating for features to function properly.

SPECIFICATIONS (CONTINUED)

● STANDARD ○ AVAILABLE – NOT AVAILABLE

	LS	RS	LT	PREMIER
EXTERIOR (CONTINUED)				
Mirrors – power remote control	●	●	–	–
– power remote control, heated	–	–	●	●
– with integrated turn signal indicators	–	–	–	●
– Black caps (requires available Midnight Edition or Redline Edition on LT)	●	–	○	–
– body-colour caps	–	●	●	●
Spoiler – rear	–	●	–	–
Tires – P205/65R16 all-season ¹	●	–	–	–
– P225/55R17 all-season [†]	–	–	●	–
– P245/45R18 all-season [†]	–	●	–	–
– P245/40R19 all-season [†] (requires available Midnight Edition or Redline Edition on LT)	–	–	○	●
– compact spare	●	●	●	–
– tire inflation kit	–	–	–	●
Wheels – 16" aluminum	●	–	–	–
– 17" aluminum	–	–	●	–
– 18" aluminum	–	●	–	–
– 19" Black-painted aluminum (requires available Midnight Edition)	–	–	○	–
– 19" Black-painted aluminum with Red accents (requires available Redline Edition)	–	–	○	–
– 19" aluminum	–	–	–	●
Wipers – 2-speed with variable delay (intermittent)	●	●	●	●
INTERIOR				
Air conditioning – manual, single-zone	●	●	–	–
– automatic, dual-zone with individual climate settings for driver and front passenger	–	–	●	●
– cabin air filter	●	●	●	●
– rear console air vents	–	–	●	●
Cruise control – electronic with set and resume speed	●	●	●	–
Adaptive Cruise Control – Advanced ¹	–	–	–	●
Defogger – electric rear-window	●	●	●	●
Door locks – power, programmable with lock-out protection	●	●	●	●
Door sill plates – front, bright	–	–	–	●
Floor mats – front and rear, carpeted	●	●	●	●
Instrumentation – analogue gauges (includes speedometer, tachometer, coolant temperature and fuel gauges)	●	●	●	●
– Driver Information Centre (includes monochromatic display with indicators for low fuel, Oil Life Monitoring System, instantaneous and average fuel consumption, fuel range, driving time, average speed, vehicle programmable features and message centre)	●	●	●	–
– Driver Information Centre, enhanced (includes same as above with 8-in. diagonal reconfigurable multi-colour display)	–	–	–	●
– exterior temperature and compass display	●	●	●	●
– Rear Seat Reminder ² notification	●	●	●	●

	LS	RS	LT	PREMIER
INTERIOR (CONTINUED)				
Keyless Open and Start – passive entry with Push-Button Start, extended-range Remote Keyless Entry System and panic feature	●	●	●	●
Lighting – front-seat reading lamps, overhead courtesy lamp and illuminated trunk area	●	●	●	●
– rear-seat reading lamps	–	–	●	●
– LED light pipes on instrument panel, front doors, map pockets and door handle release on all doors	–	–	–	●
Mirror – rear-view, manual day/night	●	●	●	–
– rear-view, auto-dimming (requires available LT Plus Package on LT)	–	–	○	●
Power outlet – 12-volt auxiliary	●	●	●	●
– 120-volt AC, on rear of centre console	–	–	–	●
Shift knob – leather-wrapped (requires available LT Plus Package on LT)	–	●	○	●
Steering column – manual tilt and telescopic	●	●	●	●
Steering wheel – 3-spoke with mounted audio, cruise and phone controls	●	–	●	–
– leather-wrapped with mounted audio, cruise and phone controls (requires available LT Plus Package on LT)	–	●	○	●
– heated (requires available LT Plus Package on LT)	–	–	○	●
Sunroof – power, tilt-sliding, with fixed rear skylight and sunshade (requires available LT True North Edition or LT Plus Package on LT)	–	–	○	●
Trunk area – cargo anchors	●	●	●	●
– carpeted mat	–	–	–	●
Vehicle starter system – remote	–	–	●	●
Visors – driver and front passenger, covered vanity mirrors	●	●	–	–
– driver and front passenger, covered illuminated vanity mirrors	–	–	●	●
Windows – power with express-down, all windows	●	●	–	–
– power with driver express-up/-down, all others express-down	–	–	●	●
SEATING				
Seats – front bucket with adjustable head restraints and seatback map pockets	●	●	●	●
– with Premium Cloth seating surfaces	●	●	●	–
– with leather-appointed seating surfaces (requires available LT Plus Package)	–	–	○	–
– with perforated leather-appointed seating surfaces	–	–	–	●
Seat – manual 6-way driver-seat adjuster	●	–	–	–
– power 8-way driver-seat adjuster with power 2-way lumbar adjuster	–	●	●	●
– manual 6-way front-passenger seat adjuster	●	●	●	–
– power 8-way front-passenger seat adjuster with power 2-way lumbar adjuster	–	–	–	●
Heated – driver and front-passenger seats	–	–	●	●
– rear outboard seating positions	–	–	–	●
Memory – recalls two pre-sets for power driver seat and exterior mirrors	–	–	–	●
Ventilated driver and front-passenger seats	–	–	–	●
Seatback – rear, 60/40 split-folding with rear centre armrest and cupholders	●	●	●	●


¹ Read the vehicle Owner's Manual for important feature limitations and information. ² Does not detect people or items. Always check rear seat before exiting. [†] All-season tires may not satisfy winter tire requirements in all regions of the country. Tires specifically designed for severe winter conditions and marked with the "winter tire" symbol  may be required during certain months or in certain regions. Contact your Provincial, Municipal or local road authority for information regarding which tires are required in your particular area.

SPECIFICATIONS (CONTINUED)

● STANDARD ○ AVAILABLE – NOT AVAILABLE

	LS	RS	LT	PREMIER
INFOTAINMENT				
Chevrolet Infotainment 3 system ¹ with 8-in. diagonal colour touch-screen, AM/FM stereo, Bluetooth [®] audio streaming ² for two active devices, voice command pass-through to compatible phone, and Apple CarPlay ^{®3} and Android Auto ^{™4} compatibility	●	●	●	–
Chevrolet Infotainment 3 Plus system ¹ with Navigation ⁵ and 8-in. diagonal HD colour touch-screen, includes features listed above, Connected Navigation ⁶ enhanced voice recognition and in-vehicle apps ⁷	–	–	–	●
Audio – 6-speaker system	●	●	●	–
– 7-speaker Bose premium system	–	–	–	●
Media – USB ports ⁸ one type-A and one type-C, and auxiliary input jack in front centre stack storage area	●	●	●	●
– USB port ⁸ charge-only, on rear of centre console	–	–	–	●
Wireless charging ⁹	–	–	–	●
SiriusXM ^{®10} – All Access Package with 3-month trial subscription	–	–	●	●
Built-in 4G LTE Wi-Fi [®] Hotspot ¹¹ includes 1-month or 3 GB data plan trial (whichever comes first) from trial activation date	●	●	●	●
Chevrolet Connected Access ¹² includes 10 years of standard connectivity and enables features such as Vehicle Diagnostics ¹³ and Dealer Maintenance Notification ¹³	●	●	●	●

	LS	RS	LT	PREMIER
PACKAGES AND SPECIAL EDITIONS				
LT True North Edition	–	–	○	–
Includes power sunroof and Driver Confidence Package (Lane Change Alert with Side Blind Zone Alert ¹⁴ Rear Cross Traffic Alert ¹⁴ and Rear Park Assist ¹⁴)				
LT Plus Package	–	–	○	–
Includes power sunroof, Leather Package (heated leather-wrapped steering wheel, leather-wrapped shift knob and interior rear-view auto-dimming mirror), Driver Confidence Package (Lane Change Alert with Side Blind Zone Alert ¹⁴ Rear Cross Traffic Alert ¹⁴ and Rear Park Assist ¹⁴) and Driver Confidence Package II (Automatic Emergency Braking ¹⁴ Following Distance Indicator ¹⁴ Forward Collision Alert ¹⁴ Front Pedestrian Braking ¹⁴ IntelliBeam headlamps and Lane Keep Assist with Lane Departure Warning ¹⁴)				
Midnight Edition	–	–	○	–
Includes 19" Black-painted aluminum wheels, P245/40R19 all-season ¹ tires, Blacked-out grille, Black Chevrolet bowtie emblems and Black Malibu badges (requires Mosaic Black Metallic exterior colour and Jet Black interior)				
Redline Edition	–	–	○	–
19" Black-painted aluminum wheels with Red accents, P245/40R19 all-season ¹ tires, Black Chevrolet bowtie emblems, Redline-specific Black grille, Black Malibu badges with Red outline and Black mirror caps (late availability)				

¹ Chevrolet Infotainment System functionality varies by model. Full functionality requires compatible Bluetooth and smartphone, and USB connectivity for some devices. Data plan rates may apply. ² Visit my.gm.ca/Chevrolet/en/learnAbout/bluetooth for more information. Full Bluetooth feature functionality varies by device, model and/or vehicle configuration, and software version. ³ Vehicle user interface is a product of Apple and its terms and privacy statements apply. Requires compatible iPhone and data plan rates apply. ⁴ Vehicle user interface is a product of Google and its terms and privacy statements apply. Requires the Android Auto app on Google Play and an Android compatible smartphone running Android 5.0 Lollipop or higher. Data plan rates apply. ⁵ Detailed map coverage is available for most major urban areas of the United States and for certain metropolitan areas of Canada (Vancouver, Calgary, Edmonton, Winnipeg, Windsor, London, Toronto, Ottawa, Montreal, Quebec City and Halifax). Coverage is significantly limited outside these areas. ⁶ Requires subscription to OnStar Guidance Plan, Premium Access Plan or Navigation Add-On. Connected Navigation and Real-time Points of Interest (POI) only available on properly equipped vehicles. Services are subject to user terms and limitations and vary by model and/or vehicle configuration. Visit onstar.ca for more details. ⁷ Additional data plan rates may apply. Available on select GM vehicles with compatible hardware. Third-party trademarks are the property of their respective third-party owners and used under agreement. Visit onstar.ca for service limitations, availability and service plan details. Requires active connected vehicle services and data plan or connection to an external Wi-Fi Hotspot. Vehicle data plans provided by AT&T or its local service provider. Services are subject to user terms and limitations. Visit onstar.ca for more details. ⁸ Not compatible with all devices. ⁹ The system wirelessly charges one compatible mobile device. Some devices require an adaptor or back cover. See myChevrolet.ca for more information. ¹⁰ Available in 10 Canadian provinces, 3 territories and the 48 contiguous United States. Subscription sold separately after trial period. If you decide to continue your service at the end of your trial subscription, the plan you choose will automatically renew and bill at then-current rates until you call 1-888-539-7474 to cancel. Other fees and taxes will apply. All fees and programming subject to change. See the Customer Agreement for complete terms at siriusxm.ca/terms. ¹¹ Visit onstar.ca for vehicle availability, coverage maps, details and system limitations. Services and connectivity may vary by model and/or vehicle configuration and conditions as well as geographical and technical restrictions. 4G LTE service available in select markets. Requires active connected vehicle services and a data plan to access the vehicle's built-in Wi-Fi Hotspot. Accessory Power must be active to use the Wi-Fi Hotspot. Data plans provided by AT&T or its local service provider. Credit card is required for purchase. ¹² Limitations apply. Not transferable. Standard connectivity available to original purchaser for 10 years from the trial activation date for properly equipped vehicles. Visit onstar.ca for details and further plan limitations. Connected Access does not include emergency or security services. Availability of Connected Access and any of its services is dependent on compatible 4G LTE wireless networks and is also subject to change. ¹³ Capabilities vary by model and/or vehicle configuration and service plan. Visit onstar.ca for vehicle availability. Message and data rates may apply. Requires active service, email address on file and enrollment in Vehicle Diagnostics. Not all issues will deliver alerts. On-Demand Diagnostics requires a paid service plan. ¹⁴ Read the vehicle Owner's Manual for important feature limitations and information. † All-season tires may not satisfy winter tire requirements in all regions of the country. Tires specifically designed for severe winter conditions and marked with the "winter tire" symbol  may be required during certain months or in certain regions. Contact your Provincial, Municipal or local road authority for information regarding which tires are required in your particular area.

DIMENSIONS



EXTERIOR, mm (in.)		
Wheelbase	2830 (111.4)	
Length	4933 (194.2)	
Width	1854 (73.0)	
Height	1471 (57.9)	
Front Track	1590 (62.6)	
Rear Track	1588 (62.5)	
INTERIOR, mm (in.) front/rear		
Headroom	993/952 (39.1/37.5)	
Legroom	1054/968 (41.5/38.1)	
Shoulder Room	1486/1450 (58.5/57.1)	
Hip Room	1374/1356 (54.1/53.4)	
CAPACITIES		
Max. Cargo Area, L (cu. ft.) ¹	445 (15.7)	
Fuel Tank, L (imp. gal.)	60 (13.2)	
CURB WEIGHT, kg (lb.)		
– LS and RS	1422 (3135)	
– LT	1433 (3159)	
– Premier	1462 (3223)	
ESTIMATED FUEL CONSUMPTION RATINGS, L/100 km (mpg) ²		
	CITY	HIGHWAY
1.5L I-4	8.2 (34)	6.6 (43)
2.0L I-4	10.5 (27)	7.4 (38)

¹ Cargo and load capacity limited by weight and distribution. ² Fuel consumption estimates based on GM testing in accordance with Government of Canada approved test methods. Refer to vehicles.nrcan.gc.ca for details. Your actual fuel consumption will vary.



Experience Chevrolet Complete Care, a comprehensive package of owner benefits that are included with every new 2020 Chevrolet Malibu leased or purchased in Canada.

Chevrolet Complete Care coverage includes:

2-year/24,000 km¹ 2 Complimentary Lube-Oil-Filter Program.²

3-year/60,000 km¹ Base Warranty Coverage.³

5-year/100,000 km¹ Powertrain Component Warranty Coverage.³

5-year/100,000 km¹ Courtesy Transportation.⁴

5-year/100,000 km¹ 24/7 Roadside Assistance.⁴

6-year/160,000 km¹ Sheet Metal rust-through perforation coverage.³

1-month trial of Chevrolet Connected Services and 1 month of OnStar Safety & Security coverage.⁵

Chevrolet Connected Access⁶ includes 10 years of standard connectivity and enables services such as Vehicle Diagnostics⁷ and Dealer Maintenance Notification⁷

Other ownership privileges and programs:⁸

- Chevrolet Protection Plan — the only extended service plan backed by the resources and commitment of General Motors. The Chevrolet Protection Plan may be purchased at the time of vehicle sale or subsequently during the Base Warranty Coverage period.⁹
- Chevrolet Owner Centre — Everything you need to know. Anything you need to do. Your Chevrolet Owner Centre makes it easy. Create your account today to get the most out of your new vehicle. Get special alerts and offers, schedule service, review your maintenance schedule, and view how-to videos specifically for your vehicle. All online, anytime. Visit the Owner Centre today to register or take a tour. Find out more at mychevrolet.ca.
- Discount Programs — save on your next vehicle. Students or recent graduates,⁸ people with disabilities⁸ and military personnel⁸ you may be eligible¹⁰ for a discount on select new Chevrolet vehicles leased or purchased. Combine your discount with great retail offers for an exceptional value. For full details on all programs offered in Canada, visit programs.gm.ca.
- GM Card[®] — Cardholders may redeem Earnings towards the total purchase price or lease down payment of an eligible new Chevrolet car, truck or crossover. Restrictions and limitations apply. For full program details, visit gmcad.ca.

Chevrolet ownership experience. Chevrolet is committed to enhancing the vehicle shopping and ownership experience through a wide array of programs. Visit chevrolet.ca to build and price, find a vehicle, request a quote, compare vehicles, find financial tools or track your vehicle order. You'll also find information about 24-hour Roadside Assistance, Courtesy Transportation, Customer Assistance, GM Mobility, safety and current incentives.

Important words about this brochure. Some of the equipment shown or described throughout this brochure may be available at extra cost. We have tried to make this brochure comprehensive and factual. We reserve the right, however, to make changes at any time, without notice, in prices, colours, materials, equipment, specifications, models and availability. Specifications, dimensions, measurements, ratings and other numbers in this brochure and other printed materials provided at

the dealership or affixed to vehicles are approximates based on design and engineering drawings, prototypes and laboratory tests. Your vehicle may differ due to variations in manufacture and equipment. Since some information may have been updated since the time of printing, please check with your Chevrolet dealer for complete details. General Motors of Canada Company reserves the right to lengthen or shorten the model year for any product, for any reason, or to start and end model years at different times. Certain vehicle features may lose their usefulness over time due to obsolescence from technological changes. Unless otherwise noted, all claims based on the GM Mid-Car Sedan segment and the latest available competitive information. Excludes other GM vehicles.

Engines. Chevrolet products are equipped with engines produced by GM Global Propulsion Systems or other suppliers to GM worldwide. The engines in Chevrolet products may also be used in other GM makes and models.

Assembly. Chevrolet vehicles and their components are assembled or produced by different operating units of General Motors, its subsidiaries or suppliers to GM worldwide. We sometimes find it necessary to produce Chevrolet vehicles with different or differently sourced components than originally scheduled. Since some options may be unavailable when your vehicle is assembled, we suggest you verify that your vehicle includes the equipment you ordered and that, if there were changes, they are acceptable to you.

Fleet orders. Some standard content and owner benefits may be modified or deleted on fleet orders. See dealer for details.

An important note about alterations and warranties. Installations or alterations to the original equipment vehicle (or chassis) as distributed by General Motors are not covered by the New Vehicle Limited Warranty. The special body company, assembler, equipment installer or upfitter is solely responsible for warranties on the body or equipment and any alterations (or any effect of the alterations) to any of the parts, components, systems or assemblies installed by GM. General Motors is not responsible for the safety or quality of design features, materials or workmanship of any alterations by such suppliers.

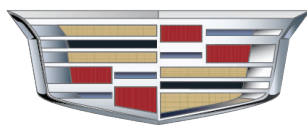
Trademarks. The marks appearing in this brochure including, but not limited to, General Motors, GM, Chevrolet, the Chevrolet emblem, Malibu and their respective logos, emblems, slogans and vehicle model names and body designs; and other marks such as Duralife, Find New Roads, IntelliBeam, myChevrolet, OnStar, the OnStar emblem and StabiliTrak are trademarks of General Motors LLC, OnStar LLC and/or General Motors of Canada Company, its subsidiaries, affiliates or licensors. Apple, Apple CarPlay and iPhone are trademarks of Apple Inc., registered in the U.S. and other countries. Bluetooth is a registered trademark of Bluetooth SIG, Inc. Bose is a registered trademark of the Bose Corporation. Facebook is a registered trademark of Facebook, Inc. © 2019 Sirius XM Canada Inc. "SiriusXM," the SiriusXM logo, channel names and logos are registered trademarks of Sirius XM Radio Inc. and are used under license. All rights reserved. Twitter is a trademark of Twitter, Inc. YouTube is a registered trademark and Android, Android Auto and Google Play are trademarks of Google LLC. Wi-Fi is a registered trademark of Wi-Fi Alliance.

©Copyright 2019 General Motors of Canada Company. All rights reserved. All text, images, graphics, and other materials in this brochure are subject to the copyright and other intellectual property rights of General Motors LLC and/or General Motors of Canada Company. These materials may not be reproduced, distributed or modified without the express written permission of General Motors LLC and/or General Motors of Canada Company. September 2019.



¹ Whichever comes first. ² Limit of two (2) Lube-Oil-Filter services during the program period. Fluid top-offs, inspections, tire rotations, wheel alignments and balancing, etc., are not covered. Additional conditions and limitations apply. See participating dealer for details. ³ Conditions and limitations apply. See Warranty Booklet for details. ⁴ Conditions and limitations apply. See Owner's Manual for details. ⁵ Properly equipped Chevrolet vehicles are eligible for 1 month of Connected Services trial and OnStar Safety & Security Plan coverage, starting at trial activation date; includes emergency and navigation services, Connected Navigation, the Remote Access Plan, plus a 3 GB or 1-month (whichever comes first) data plan trial. Services subject to user terms and limitations, and capabilities vary by model and/or vehicle configuration; visit onstar.ca for details. Data plans offered by AT&T or its local service provider. Availability subject to change. GM Canada may modify, extend or terminate offers for any reason, in whole or in part, at any time, without notice. Requires vehicle electrical system (including battery), wireless service and GPS satellite signal to be available and operating for features to function properly. ⁶ Limitations apply. Not transferable. Standard connectivity available to original purchaser for 10 years from the trial activation date for properly equipped vehicles. Visit onstar.ca for details and further plan limitations. Connected Access does not include emergency or security services. Availability of Connected Access and any of its services is dependent on compatible 4G LTE wireless networks and is also subject to change. ⁷ Capabilities vary by model and/or vehicle configuration and service plan. Visit onstar.ca for vehicle availability. Message and data rates may apply. Requires active service, email address on file and enrollment in Vehicle Diagnostics. Not all issues will deliver alerts. On-Demand Diagnostics requires a paid service plan. ⁸ Conditions and limitations apply. ⁹ Please work with your dealer to select the plan that is suitable for your driving needs. Dealers are free to set their own prices. ¹⁰ Subject to eligibility.

MURRAY



Cadillac

403.527.1141

WWW.MURRAYCHEV.CA

**1270 TRANS CANADA WAY SE
MEDICINE HAT, AB - T1B 1J5**