

TAHOE 2020

CHEVROLET 



CONFIDENT AND CONNECTED.

With its signature style and athletic stance, the Chevrolet Tahoe is designed to make a lasting impression. From the refinement of a finely crafted interior to the capability of the EcoTec3 V8 engine, Tahoe is built for confidence. Tahoe helps you stay connected with innovative technology that complements available advanced safety features. If that's not enough, special editions such as the off-road capable Z71 Midnight Edition and the performance-focused RST will certainly command your attention.

FIND NEW ROADS™

Tahoe Premier in Iridescent Pearl Tricoat (extra-cost colour) with available RST Edition and other available features.



MODELS

LS

Delivering uncommon value, the LS version of Tahoe is available in 2WD or 4x4 models.

LS has the capability you're looking for, with a 5.3L EcoTec3 V8 engine, automatic locking rear differential and seating for up to nine passengers with an available front split-bench seat.

The available Custom Edition includes 18-in. painted-aluminum wheels and a chrome grille insert. The third-row seat is deleted for additional storage.

LT

Tahoe LT is equipped for every occasion, from the daily commute to a cross-country adventure.

Standard safety technology includes the Safety Alert Seat¹ for driver, Forward Collision Alert¹, Automatic Emergency Braking¹ and Lane Keep Assist with Lane Departure Warning¹.

Inside LT, you'll find heated leather-appointed front bucket seats with 10-way power adjustment and power-adjustable pedals with 2-position memory. A programmable power liftgate adds convenience.

Top: Tahoe LS in Silver Ice Metallic with available features.

Bottom: Tahoe LT in Black.



¹ Read the vehicle Owner's Manual for important feature limitations and information.

MODELS

PREMIER

Here is the quiet, confident balance of luxury and style you expect in a top-of-the-line SUV.

Tahoe Premier offers an impressive complement of active safety technology, plus power-folding heated exterior mirrors and 20-in. polished-aluminum wheels. Magnetic Ride Control™ provides a comfortable and refined ride.

The all-weather traction of Autotrac 4-wheel drive provides added assurance and includes a “4x4 Auto” setting that automatically switches between 2Hi and 4Hi depending on conditions. An available 6.2L EcoTec3 V8 engine and a 10-speed automatic transmission take this performance to an even higher level.

The well-appointed Premier interior includes heated and ventilated front bucket seats with 12-way power adjusters, heated second-row bucket seats with power release, a heated steering wheel, a power tilt/telescopic steering column and a 10-speaker Bose Centerpoint surround sound audio system.

Tahoe Premier in Siren Red Tintcoat
(extra-cost colour) with available features.



SPECIAL EDITIONS

CUSTOM MIDNIGHT EDITION

Hit the streets and own the night with the LS Custom Midnight Edition.

Attention-commanding features include 18-in. Black-painted aluminum wheels, Goodyear Wrangler DuraTrac® tires, Black tubular assist steps, a Black mesh grille, Black recovery hooks¹ and Black bowtie emblems.

The all-black exterior is complemented by a Jet Black Premium Cloth interior, and third-row seating is removed for additional storage.

LT MIDNIGHT EDITION

Wherever the LT Midnight appears, everything else is simply background.

Here's what makes an LT a Midnight Edition: Black exterior paint and exclusive 20-in. Black-painted aluminum wheels, Black bowtie emblems and Black roof rack cross rails.

Top: Tahoe LS in Black with available Custom Midnight Edition.

Bottom: Tahoe LT in Black with available LT Midnight Edition and other available features.



¹ To avoid the risk of injury, never use recovery hooks to tow a vehicle. See the Owner's Manual for more information.

SPECIAL EDITIONS

Z71 MIDNIGHT EDITION

With the available Z71 Off-Road Package, you're ready to tame any trail. Z71 earns its legendary designation with a tuned Off-Road suspension, Goodyear Wrangler DuraTrac® tires, skid plates, an Autotrac 2-speed active transfer case and Hill Descent Control.

A Z71-specific grille, Black tubular assist steps and recovery hooks,¹ and Z71 badging put an exclamation point on this Tahoe edition. The Z71 Midnight Edition also includes Black-painted aluminum wheels, a unique Z71 Midnight grille and Black roof rack cross rails. Z71 is available on LT 4x4 models.

RST EDITION

The RST Edition, available on LT and Premier, is street art you can't help but notice.

RST is instantly recognized by its body-colour appearance, Gloss Black accents and exclusive 22-in. aluminum wheels with Silver accents. The available RST 6.2L Performance Edition features a 420-horsepower 6.2L EcoTec3 V8 engine and a 10-speed automatic transmission.

Top: Tahoe LT in Black with available Z71 Midnight Edition and other available features.

Bottom: Tahoe Premier in Summit White with available RST Edition and Chevrolet Accessories.²



¹ To avoid the risk of injury, never use recovery hooks to tow a vehicle. See the Owner's Manual for more information. ² Accessory warranty coverage, if any, varies. See your GM Warranty Booklet or GM dealer for details.



Tahoe Premier interior in Mahogany (additional charge) with perforated leather appointments, Cocoa accents and available features.

INTERIOR DESIGN

THE ONLY WAY TO TRAVEL.

The room you need, with the luxury you desire. It's this enviable combination that sets Tahoe apart from lesser SUVs. There's **space for up to eight passengers** (nine in LS with the available front split-bench seat). And the second- and third-row seats fold down, so Tahoe is always ready for the next adventure.

CAPABILITY



DESIGNED TO A HIGHER LEVEL.

With the second- and third-row seats folded down, Tahoe offers up to **2682 L (94.7 cu. ft.) of cargo space behind the front row¹**. That's more than enough room for everyday use or a weeklong road trip. A **hands-free programmable power liftgate** (standard on Premier and available on LT) is another thoughtful feature. With the key fob in range, a sensor under the rear bumper allows you to open the liftgate with a gentle kicking motion.

The **8-in. diagonal touch-screen** slides up to reveal a password-protected area behind the display with space for cellphones, wallets or other valuables.

Enjoy the convenience of available **power-folding third-row seats**. The easy-to-reach buttons allow Tahoe, with power-release second-row seats and power-folding third-row seats, to go from passenger space to cargo space in no time.



¹ Cargo and load capacity limited by weight and distribution.

The image shows the driver's perspective of a modern car's interior. The steering wheel is black with a silver Chevrolet bowtie logo in the center and various control buttons on the left and right spokes. Behind the steering wheel is the instrument cluster with three main gauges: a tachometer on the left, a speedometer in the center, and a fuel/temperature gauge on the right. The infotainment system is a large touchscreen mounted in the center of the dashboard, displaying a grid of colorful app icons including Phone, Music, Maps, Messages, Now Playing, Podcasts, Audiobooks, and Waze. Below the screen are physical buttons for radio and media controls, and a row of circular climate control knobs. The center console has a gear shifter and handbrake. A smartphone is connected to the car via a USB cable and is resting on the console. The background shows a blurred view of a green lawn and trees, suggesting the car is parked outdoors.

TECHNOLOGY

YOUR PERFECTLY SYNCED DRIVE.

- Built-in 4G LTE Wi-Fi® Hotspot¹ (data plan required) providing a fast Internet connection for up to seven compatible devices.
- Apple CarPlay^{®2} compatibility.
- Android Auto^{™3} compatibility.
- Enjoy music, talk, sports, comedy and news with SiriusXM^{®,4} 24/7, in your car, online or on the app, during your All Access trial period.

¹ Visit onstar.ca for vehicle availability, coverage maps, details and system limitations. Services and connectivity may vary by model and/or vehicle configuration and conditions as well as geographical and technical restrictions. 4G LTE service available in select markets. Requires active connected vehicle services and a data plan to access the vehicle's built-in Wi-Fi Hotspot. Accessory Power must be active to use the Wi-Fi Hotspot. Data plans provided by AT&T or its local service provider. Credit card is required for purchase. ² Vehicle user interface is a product of Apple and its terms and privacy statements apply. Requires compatible iPhone and data plan rates apply. ³ Vehicle user interface is a product of Google and its terms and privacy statements apply. Requires the Android Auto app on Google Play and an Android compatible smartphone running Android 5.0 Lollipop or higher. Data plan rates apply. ⁴ Available in 10 Canadian provinces, 3 territories and the 48 contiguous United States. Subscription sold separately after trial period. If you decide to continue your service at the end of your trial subscription, the plan you choose will automatically renew and bill at then-current rates until you call 1-888-539-7474 to cancel. Other fees and taxes will apply. All fees and programming subject to change. See the Customer Agreement for complete terms at siriusxm.ca/terms.

myChevrolet® App¹ available to download,
includes remote vehicle start capability²

Available colour Head-Up Display.

The Chevrolet Infotainment System³ is intuitive and easy to
use, with a standard 8-in. diagonal colour touch-screen display.

Available Rear-Seat Blu-ray®
Entertainment System.



¹ Available on select Apple and Android devices. Service availability, features and functionality are subject to limitations and vary by model and/or vehicle configuration, device and the plan in which you are enrolled. Device data connection required. Visit onstar.ca for more details. ² Requires subscription to Remote Access Plan or Premium Access Plan. Services are subject to user terms and limitations and vary by model and/or vehicle configuration. Remote start requires GM factory-installed and enabled remote start system. Visit onstar.ca for more details. ³ Chevrolet Infotainment System functionality varies by model. Full functionality requires compatible Bluetooth and smartphone, and USB connectivity for some devices. Data plan rates may apply.

Tahoe LS in Siren Red Tintcoat (extra-cost colour) with available Custom Edition and other available features.

PERFORMANCE

EFFORTLESS V8 POWER.

- Standard 5.3L EcoTec3 V8 engine with 355 horsepower and 383 lb.-ft. of torque.
- Available 6.2L EcoTec3 V8 engine with 420 horsepower and 460 lb.-ft. of torque.
- Advanced Direct Injection boosts power and fuel efficiency.
- Variable Valve Timing helps ensure optimum power and efficiency.
- Active Fuel Management® deactivates four cylinders when extra power is not needed.
- Available maximum towing capability of up to 8600 lb. (3901 kg)†
- Tahoe Premier features Magnetic Ride Control, a real-time damping system that delivers a smooth, precise ride by reading the road a thousand times a second and changing damping in just 10–15 milliseconds.

† Requires 2WD, 5.3L EcoTec3 V8 engine and available Max Trailering Package. Before you buy a vehicle or use it for trailering, carefully review the Trailering section of the Owner's Manual. The weight of passengers, cargo and options or accessories may reduce the amount you can tow.



SAFETY AND DRIVER ASSISTANCE

READY AND VIGILANT.



Adaptive Cruise Control – Advanced. Using sensors that include radar technology, this feature can automatically adapt cruise control speed to maintain a following gap to vehicles detected ahead. Available on Premier.



Automatic Emergency Braking. If an imminent front-end collision is detected with a vehicle you are following, the feature can alert you and can automatically apply hard emergency braking or enhance driver hard braking. Standard on LT and Premier. Available on LS.



Forward Collision Alert. This feature monitors how close your vehicle is to the detected vehicle in front of you and can alert you to a potential crash. Standard on LT and Premier. Available on LS.



Lane Keep Assist with Lane Departure Warning. At speeds above 60 km/h, this feature monitors road lines when identifiable and can gently turn the steering wheel to help keep the vehicle in its lane or provide an alert if a lane marker is unintentionally crossed. Standard on LT and Premier. Available on LS.



Lane Change Alert with Side Blind Zone Alert. This feature can provide side mirror alerts when it detects fast-approaching vehicles in adjacent lanes as well as moving vehicles in the side mirror blind zones. Standard on Premier. Available on LT.



Rear Cross Traffic Alert. This feature can alert you to detected vehicles crossing behind your Tahoe when backing up. Standard on Premier. Available on LT.



Rear Vision Camera. When travelling in Reverse at low speeds, this feature helps provide a view of the area immediately behind your Tahoe. Standard on all models.



Front and Rear Park Assist. At low speeds, this feature can provide distance alerts to nearby detected objects to help you park. Standard on Premier. Available on LT.



IntelliBeam® headlamps. When oncoming headlamps are sensed or when tail lamps are detected, this feature intuitively adjusts between low and high beams. Standard on LT and Premier. Available on LS.

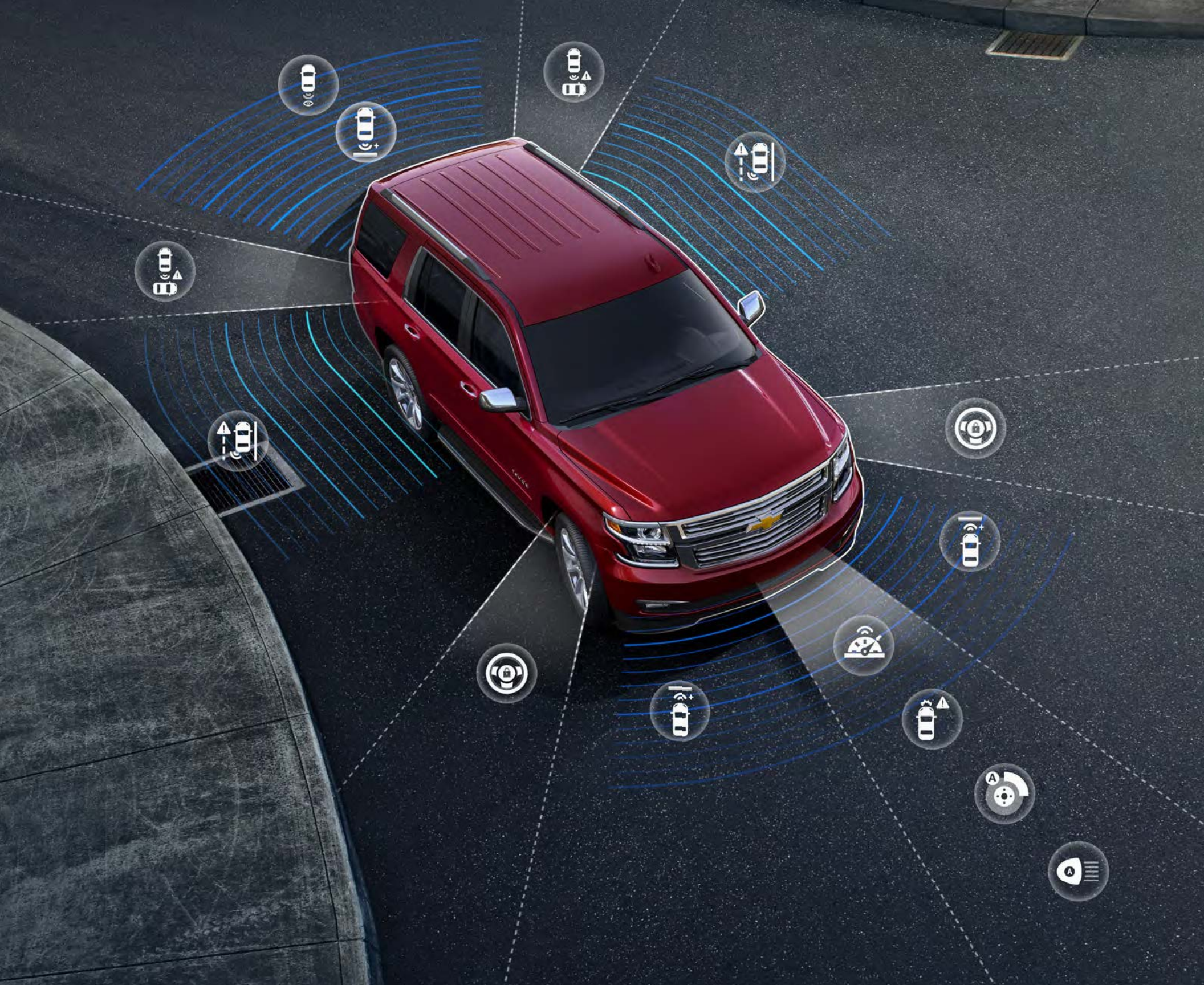


Safety Alert Seat. This feature gives you the option of getting directional vibration pulses from the driver seat instead of beeps to indicate the direction of potential threats. Standard on LT and Premier. Available on LS.



Teen Driver. This technology helps encourage better driving habits by providing an in-vehicle report card that monitors the frequency of certain available safety technology feature activations, muting the audio system when front-seat occupants aren't wearing their seat belts, and giving audible and visual warnings when the vehicle is travelling over a predetermined speed. Standard on all models.

Safety starts with you. Safety or driver assistance features are no substitute for the driver's responsibility to operate the vehicle in a safe manner. The driver should remain attentive to traffic, surroundings and road conditions at all times. Visibility, weather and road conditions may affect feature performance. Read the vehicle Owner's Manual for more important feature limitations and information.



EXTERIOR COLOURS



G1E – Siren Red Tintcoat¹



G1M – Blue Velvet Metallic¹



G1W – Iridescent Pearl Tricoat^{1,2}



G9K – Satin Steel Metallic¹



GAN – Silver Ice Metallic



GAZ – Summit White



GBA – Black



GJI – Shadow Grey Metallic¹



GLR – Black Cherry Metallic¹

¹ Available at extra cost. ² Not available on LS.

WHEELS



18" aluminum wheels with high-polished finish (PZX)
Standard on LS and LT



18" painted-aluminum wheels (RCV)
Available on LS¹ and LT²



18" Black-painted aluminum wheels (REG)
Available on LS³ and LT⁴



20" polished-aluminum wheels (RD4)
Standard on Premier
Available on LS and LT



20" Black-painted aluminum wheels (NZQ)
Available on LT⁵



20" chrome-aluminum wheels (RD2)
Available on Premier



22" premium painted-aluminum wheels
with chrome inserts (SGF)
Available on LT and Premier



22" chrome-aluminum wheels with
multi-featured design (RPT)
Available on LT and Premier



22" chrome-aluminum wheels (SMI)
Available on LT and Premier



22" Gloss Black-painted aluminum wheels
with custom Silver accents (SGK)
Available on LT⁶ and Premier⁶



22" bright machined-aluminum wheels
with bright Silver finish (SIY)
Available on Premier

¹ Requires available Custom Edition. ² Requires available Z71 Off-Road Package. ³ Requires available Custom Midnight Edition. ⁴ Requires available Z71 Midnight Edition. ⁵ Requires available LT Midnight Edition. ⁶ Requires available RST Edition.

MODELS



LS Tahoe LS includes these features:

MECHANICAL

Brakes – 4-wheel disc brakes with Duralife® brake rotors, Anti-lock Braking System (ABS), Brake Assist and Hill Start Assist

Cooling – external engine and transmission oil coolers

Differential – heavy-duty, automatic locking rear

Engine – 5.3L EcoTec3 V8 with Variable Valve Timing (VVT), Direct Injection and Active Fuel Management

StabiliTrak® – Electronic Stability Control System and Traction Control; includes Electronic Trailer Sway Control

Suspension – Premium Smooth Ride

Trailer equipment – trailer hitch platform, 7-wire harness with independent fused trailering circuits mated to a 7-way sealed connector and 2-in. trailering hitch receiver

Transmission – 6-speed automatic, with Tow/Haul mode, Driver Shift Control and Grade Braking

EXTERIOR

Active aero shutters

Assist steps – Black

Daytime running lamps – LED

Glass – deep-tinted behind front doors

Headlamps – halogen, projector-beam, automatic on/off with automatic delay

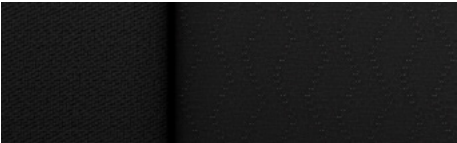
Mirrors – manual-folding, power remote control, heated with body-colour caps; includes integral driver spotter mirror

Roof-mounted side rails – Black

Tires – P265/65R18 all-season†

Wheels – 18" aluminum with high-polished finish (PZX)

Wipers – front variable-speed, intermittent with Rainsense™; rear intermittent with washer



Jet Black Premium Cloth



Dune Premium Cloth (shown)

INTERIOR

Air conditioning – tri-zone automatic climate controls with humidity sensor and individual climate settings for driver, right-front passenger and rear passengers

Cruise control – electronic with set and resume speed

Door locks – power programmable with lock-out protection and manual rear door child security

Driver Information Centre – 4.2-in. diagonal multi-colour display

Entertainment – Chevrolet Infotainment System¹ with 8-in. diagonal colour touch-screen, AM/FM stereo, HD Radio,® single-slot CD/MP3 player, Bluetooth® audio streaming;² in-vehicle apps;³ and Apple CarPlay®⁴ and Android Auto™⁵ compatibility

Power outlets – 110-volt AC on rear of centre console and five 12-volt auxiliary

Rear Park Assist⁶

Rear Vision Camera⁶

Remote Keyless Entry – extended-range

Seat – power 10-way driver adjuster, includes power recliner and power 2-way lumbar control

Seat – power 6-way front-passenger adjuster, includes power recliner and power 2-way lumbar control

Seats – 2nd- and 3rd-row manual-folding 60/40 split-bench

SiriusXM®⁷ – All Access Package with 3-month trial subscription


Steering column – manual tilt

Steering wheel – leather-wrapped with mounted audio, cruise and phone controls

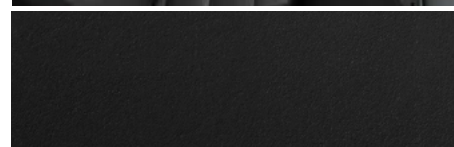
Theft-deterrent system – unauthorized entry

Vehicle starter system – remote

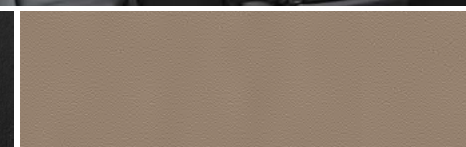
Windows – power with driver and front passenger express-up/-down, all others express-down

¹ Chevrolet Infotainment System functionality varies by model. Full functionality requires compatible Bluetooth and smartphone, and USB connectivity for some devices. Data plan rates may apply. ² Visit my.gm.ca/Chevrolet/en/learnAbout/bluetooth for more information. Full Bluetooth feature functionality varies by device, model and/or vehicle configuration, and software version. ³ Additional data plan rates may apply. Available on select GM vehicles with compatible hardware. Third-party trademarks are the property of their respective third-party owners and used under agreement. Visit onstar.ca for service limitations, availability and service plan details. Requires active connected vehicle services and data plan or connection to an external Wi-Fi Hotspot. Vehicle data plans provided by AT&T or its local service provider. Services are subject to user terms and limitations. Visit onstar.ca for more details. ⁴ Vehicle user interface is a product of Apple and its terms and privacy statements apply. Requires compatible iPhone and data plan rates apply. ⁵ Vehicle user interface is a product of Google and its terms and privacy statements apply. Requires the Android Auto app on Google Play and an Android compatible smartphone running Android 5.0 Lollipop or higher. Data plan rates apply. ⁶ Read the vehicle Owner's Manual for important feature limitations and information. ⁷ Available in 10 Canadian provinces, 3 territories and the 48 contiguous United States. Subscription sold separately after trial period. If you decide to continue your service at the end of your trial subscription, the plan you choose will automatically renew and bill at then-current rates until you call 1-888-539-7474 to cancel. Other fees and taxes will apply. All fees and programming subject to change. See the Customer Agreement for complete terms at siriusxm.ca/terms. † All-season tires may not satisfy winter tire requirements in all regions of the country. Tires specifically designed for severe winter conditions and marked with the "winter tire" symbol  may be required during certain months or in certain regions. Contact your Provincial, Municipal or local road authority for information regarding which tires are required in your particular area.

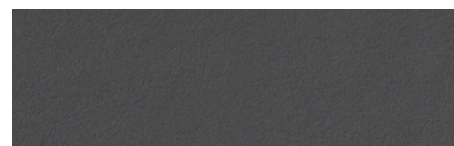
MODELS (CONTINUED)



Jet Black Leather-Appointed Seating Surfaces (shown)²



Dune Leather-Appointed Seating Surfaces²



Dark Ash Leather-Appointed Seating Surfaces²

LT In addition to or replacing LS features, LT includes:

EXTERIOR

IntelliBeam headlamps – automatic high beam on/off

Liftgate – power, programmable

INTERIOR

Audio – Bose premium 9-speaker sound system with Richbass subwoofer in centre console

Automatic Emergency Braking¹

Forward Collision Alert¹

Lane Keep Assist with Lane Departure Warning¹

Memory – recalls two pre-sets for power driver seat and power-adjustable accelerator and brake pedals

Mirror – rear-view, auto-dimming

Pedals – power-adjustable accelerator and brake with memory

Safety Alert Seat¹ – for driver

Seat – power 10-way front-passenger adjuster, includes power recliner and power 2-way lumbar control

Steering column – manual tilt and telescopic

Universal Home Remote – programmable, includes garage door opener

¹ Read the vehicle Owner's Manual for important feature limitations and information. ² Leather-appointed seating surfaces on front and 2nd row. 3rd row is vinyl-covered.

MODELS (CONTINUED)



PREMIER In addition to or replacing LT features, Premier includes:

MECHANICAL

Suspension – Magnetic Ride Control

Transfer case – active, single-speed Autotrac with electronic rotary controls

EXTERIOR

Assist steps – Black with chrome accent strip

Fog lamps

Headlamps – High-Intensity Discharge (HID)

Liftgate – power, programmable, hands-free

Mirrors – power-folding, power remote control, heated, with integrated turn signal indicators, ground illumination and driver-side auto-dimming feature

Mouldings – bodyside, body-colour

Roof-mounted side rails – Black with bright accent

Tires – P275/55R20 all-season¹

Wheels – 20" polished-aluminum (RD4)

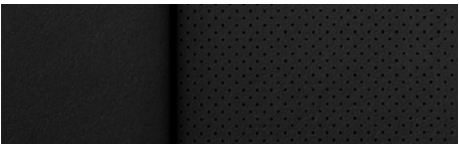
INTERIOR

Audio – Bose Centerpoint surround sound premium 10-speaker system

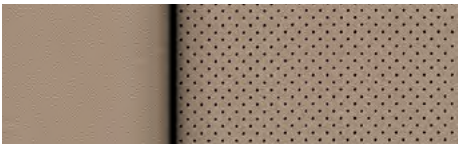
Entertainment – Chevrolet Infotainment System¹ with Navigation²; 8-in. diagonal colour touch-screen, AM/FM stereo, HD Radio[®], single-slot CD/MP3 player, GPS navigation system, Bluetooth[®] audio streaming³; in-vehicle apps⁴; Apple CarPlay^{®5} and Android Auto^{™6} compatibility

Front and Rear Park Assist⁷

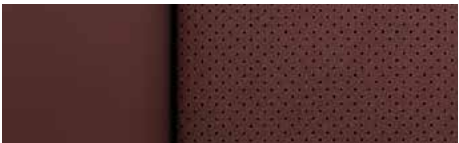
Keyless Open and Start – passive entry with Push-Button Start, extended-range Remote Keyless Entry System and panic feature



Jet Black Perforated Leather-Appointed Seating Surfaces⁹



Dune Perforated Leather-Appointed Seating Surfaces⁹



Mahogany Perforated Leather-Appointed Seating Surfaces with Cocoa Accents (shown)⁹

INTERIOR (CONTINUED)

Lane Change Alert with Side Blind Zone Alert⁷

Memory – recalls two pre-sets for power driver seat, exterior mirrors, power tilt and telescopic steering column, and power-adjustable accelerator and brake pedals

Rear Cross Traffic Alert⁷

Seats – power 12-way driver and front-passenger adjusters, includes power recliner and power 4-way lumbar control

Seats – ventilated driver and front passenger


Seats – 2nd-row heated bucket seats with power release

Seats – 3rd-row power-folding 60/40 split-bench

Steering column – power tilt and telescopic

Steering wheel – heated

Wireless charging⁸

¹ Chevrolet Infotainment System functionality varies by model. Full functionality requires compatible Bluetooth and smartphone, and USB connectivity for some devices. Data plan rates may apply. ² Detailed map coverage is available for most major urban areas of the United States and for certain metropolitan areas of Canada (Vancouver, Calgary, Edmonton, Winnipeg, Windsor, London, Toronto, Ottawa, Montreal, Quebec City and Halifax). Coverage is significantly limited outside these areas. ³ Visit my.gm.ca/Chevrolet/en/learnAbout/bluetooth for more information. Full Bluetooth feature functionality varies by device, model and/or vehicle configuration, and software version. ⁴ Additional data plan rates may apply. Available on select GM vehicles with compatible hardware. Third-party trademarks are the property of their respective third-party owners and used under agreement. Visit onstar.ca for service limitations, availability and service plan details. Requires active connected vehicle services and data plan or connection to an external Wi-Fi Hotspot. Vehicle data plans provided by AT&T or its local service provider. Services are subject to user terms and limitations. Visit onstar.ca for more details. ⁵ Vehicle user interface is a product of Apple and its terms and privacy statements apply. Requires compatible iPhone and data plan rates apply. ⁶ Vehicle user interface is a product of Google and its terms and privacy statements apply. Requires the Android Auto app on Google Play and an Android compatible smartphone running Android 5.0 Lollipop or higher. Data plan rates apply. ⁷ Read the vehicle Owner's Manual for important feature limitations and information. ⁸ The system wirelessly charges one compatible mobile device. Some devices require an adaptor or back cover. See myChevrolet.ca for more information. ⁹ Leather-appointed seating surfaces on front and 2nd row. 3rd row is vinyl-covered. † All-season tires may not satisfy winter tire requirements in all regions of the country. Tires specifically designed for severe winter conditions and marked with the "winter tire" symbol  may be required during certain months or in certain regions. Contact your Provincial, Municipal or local road authority for information regarding which tires are required in your particular area.

SPECIFICATIONS

● STANDARD ○ AVAILABLE – NOT AVAILABLE

	LS	LT	PREMIER
SAFETY & SECURITY			
Airbags ¹ – frontal airbags for driver and front outboard passenger; seat-mounted side-impact airbags for driver and front outboard passenger; driver inboard seat-mounted side-impact airbag (requires front bucket seats); head-curtain airbags for all rows in outboard seating positions; includes front outboard Passenger Sensing System for frontal outboard passenger airbag	●	●	●
Automatic Emergency Braking ² (requires available Enhanced Driver Alert Package on LS)	○	●	●
Door locks – rear doors, child security	●	●	●
Forward Collision Alert ² (requires available Enhanced Driver Alert Package on LS)	○	●	●
Lane Change Alert with Side Blind Zone Alert ² (requires available Luxury Package on LT)	–	○	●
Lane Keep Assist with Lane Departure Warning ² (requires available Enhanced Driver Alert Package on LS)	○	●	●
OnStar® Safety & Security Plan coverage ³ for 1 month from the trial activation date, which includes Automatic Crash Response, Stolen Vehicle Assistance, Roadside Assistance and Turn-by-Turn Navigation	●	●	●
Park assist – Rear Park Assist ²	●	●	–
– Front and Rear Park Assist ² (requires available Luxury Package, Z71 Off-Road Package or Z71 Midnight Edition on LT)	–	○	●
Rear Cross Traffic Alert ² (requires available Luxury Package on LT)	–	○	●
Rear Vision Camera ²	●	●	●
Safety Alert Seat for driver ² (requires available Enhanced Driver Alert Package on LS)	○	●	●
Safety restraints – 3-point belts for all seating positions and front seat belt pre-tensioners	●	●	●
– LATCH system (Lower Anchors and Tethers for Children), for child restraint systems	●	●	●
StabiliTrak – Electronic Stability Control System; includes Electronic Trailer Sway Control	●	●	●
Teen Driver technology	●	●	●
Theft-deterrent system – electronic immobilizer	●	●	●
– unauthorized entry	●	●	●
– content theft alarm with self-powered horn (requires available Theft Protection Package)	–	○	○
Tire Pressure Monitoring System – with Tire Fill Alert (does not monitor spare tire)	●	●	●
Traction Control – electronic, full-function, all-speed	●	●	●

	LS	LT	PREMIER
MECHANICAL			
Air filter – high-capacity (requires available Z71 Off-Road Package or Z71 Midnight Edition on LT; requires available 6.2L Performance Package, Premier 6.2L Value Package or RST 6.2L Performance Edition on Premier)	–	○	○
Axle ratio, rear – 3.08:1	●	●	●
– 3.23:1 (requires available 6.2L Performance Package, Premier 6.2L Value Package or RST 6.2L Performance Edition)	–	–	○
– 3.42:1 (requires available Max Trailering Package on LS and Premier; requires available Max Trailering Package, Z71 Off-Road Package or Z71 Midnight Edition on LT)	○	○	○
Battery – maintenance-free with run-down protection	●	●	●
Brakes – power, 4-wheel disc with Duralife rotors	●	●	●
– 4-wheel Anti-lock Braking System (ABS) with Panic Brake Assist and Hill Start Assist	●	●	●
Cooling – external engine and transmission oil coolers	●	●	●
Differential – heavy-duty, automatic locking rear	●	●	●
Engine – 5.3L EcoTec3 V8 with Variable Valve Timing (VVT), Direct Injection and Active Fuel Management; 355 hp @ 5600 rpm, 383 lb.-ft. of torque @ 4100 rpm	●	●	●
– 6.2L EcoTec3 V8 with Variable Valve Timing, Direct Injection and Active Fuel Management; 420 hp @ 5600 rpm, 460 lb.-ft. of torque @ 4100 rpm (requires available 6.2L Performance Package, Premier 6.2L Value Package or RST 6.2L Performance Edition)	–	–	○
Engine block heater	○	○	○
Steering – power, electric, rack-and-pinion	●	●	●
Suspension – Premium Smooth Ride	●	●	–
– Z71 Off-Road (requires available Z71 Off-Road Package)	–	○	–
– Z85 Suspension Package – includes increased capacity, Premium Smooth Ride suspension with rear air levelling (requires available Max Trailering Package on LS; requires available Max Trailering Package or RST Edition on LT)	○	○	–
– Magnetic Ride Control, road-sensing, electronic-controlled shock absorbers	–	–	●
Trailer brake controller – integrated (requires available Max Trailering Package on LS and LT; requires available Max Trailering Package, 6.2L Performance Package, Premier 6.2L Value Package or RST 6.2L Performance Edition on Premier)	○	○	○
Trailering equipment – trailer hitch platform, 7-wire harness with independent fused trailering circuits mated to a 7-way sealed connector and 2-in. trailering hitch receiver	●	●	●
Transfer case – active, single-speed, electronic Autotrac with rotary controls; does not include Neutral and cannot be dinghy-towed (4x4 models)	○	○	●
– active, 2-speed, electronic Autotrac with rotary controls; includes Neutral position for dinghy towing (4x4 models)	○	○	○
Transmission – 6-speed automatic with overdrive and Tow/Haul mode	●	●	●
– 10-speed automatic with overdrive and Tow/Haul mode (requires available 6.2L Performance Package, Premier 6.2L Value Package or RST 6.2L Performance Edition)	–	–	○


1 A NOTE ON CHILD SAFETY: Always use seat belts and the correct child restraint for your child's age and size, even with airbags. Even in vehicles equipped with the Passenger Sensing System, children are safer when properly secured in a rear seat in the appropriate infant, child or booster seat. Never place a rear-facing infant restraint in the front seat of any vehicle equipped with an active frontal airbag. See your vehicle Owner's Manual and the child safety seat instructions for more safety information. **2** Read the vehicle Owner's Manual for important feature limitations and information. **3** Properly equipped Chevrolet vehicles are eligible for 1 month of Connected Services trial and OnStar Safety & Security coverage starting at trial activation date; includes emergency and navigation services, the Remote Access Plan, plus a 3 GB or 1-month (whichever comes first) data plan trial. Services subject to user terms and limitations; capabilities vary by model and/or vehicle configuration; visit onstar.ca for details. Data plans offered by AT&T or its local service provider. Availability subject to change. GM Canada may modify, extend or terminate offers for any reason, in whole or in part, at any time, without notice. Requires vehicle electrical system (including battery), wireless service and GPS satellite signal to be available and operating for features to function properly.

SPECIFICATIONS (CONTINUED)

● STANDARD ○ AVAILABLE – NOT AVAILABLE

	LS	LT	PREMIER
EXTERIOR			
Active aero shutters	●	●	●
Assist steps – Black	●	●	–
– Black with bright accent strip	–	–	●
– Black, tubular (requires available Custom Midnight Edition on LS; requires available Z71 Off-Road Package or Z71 Midnight Edition on LT)	○	○	–
– power-retractable with bright accent strip and perimeter lighting	–	–	○
Emblems – Black Chevrolet bowtie, front and rear (requires available Custom Midnight Edition on LS; requires available LT Midnight Edition, Z71 Midnight Edition or RST Edition on LT; requires available RST Edition on Premier)	○	○	○
Fuel filler – capless fuelling	●	●	●
Glass – solar-absorbing, tinted (deep-tinted on all windows behind front doors)	●	●	●
Liftgate – manual	●	–	–
– power, programmable	–	●	–
– power, programmable, hands-free (requires available Luxury Package on LT)	–	○	●
Lighting – LED daytime running lamps, automatic on/off with automatic delay	●	●	●
– halogen headlamps, projector-beam	●	●	–
– High-Intensity Discharge (HID) headlamps	–	–	●
– IntelliBeam headlamps – automatic high beam on/off (requires available Enhanced Driver Alert Package on LS)	○	●	●
– fog lamps (requires available Luxury Package, Z71 Off-Road Package or Z71 Midnight Edition on LT)	–	○	●
– LED tail lamps	●	●	●
Mirrors – manual-folding, power remote control, heated with body-colour caps; includes integral driver spotter mirror	●	●	–
– power-folding, power remote control, heated, with integrated turn signal indicators, ground illumination and driver-side auto-dimming feature (requires available Luxury Package on LT)	–	○	●
Mouldings – bodyside, body-colour	○	○	●
– bodyside, bright	○	○	–
Recovery hooks ¹ – frame-mounted, Black (requires available Z71 Off-Road Package or Z71 Midnight Edition on LT)	○	○	–
Roof-mounted side rails – Black	●	●	–
– Black with bright accent	–	–	●
Tires – P265/65R18 all-season ¹	●	●	–
– P265/65R18 Goodyear Wrangler DuraTrac [®] (requires available Custom Midnight Edition on LS; requires available Z71 Midnight Edition on LT)	○	○	–
– P265/65R18 all-terrain (requires available Z71 Off-Road Package)	–	○	–
– P275/55R20 all-season ¹ (requires available 20" x 9" aluminum wheels on LS and LT)	○	○	●
– P285/45R22 all-season ¹ (requires available 22" x 9" aluminum wheels)	–	○	○
– full-size spare, P265/70R17 all-season ¹	●	●	●

	LS	LT	PREMIER
EXTERIOR (CONTINUED)			
Wheels – 18" x 8.5" aluminum with high-polished finish (PZX)	●	●	–
– 18" x 8.5" painted-aluminum (RCV) (requires available Custom Edition on LS; requires available Z71 Off-Road Package on LT)	○	○	–
– 18" x 8.5" Black-painted aluminum (REG) (requires available Custom Midnight Edition on LS; requires available Z71 Midnight Edition on LT)	○	○	–
– 20" x 9" polished-aluminum (RD4)	○	○	●
– 20" x 9" Black-painted aluminum (NZQ) (requires available LT Midnight Edition)	–	○	–
– 20" x 9" chrome-aluminum (RD2)	–	–	○
– 22" x 9" premium painted-aluminum with chrome inserts (SGF)	–	○	○
– 22" x 9" chrome-aluminum with multi-featured design (RPT)	–	○	○
– 22" x 9" chrome-aluminum (SMI)	–	○	○
– 22" x 9" Gloss Black-painted aluminum with custom Silver accents (SGK) (requires available RST Edition)	–	○	○
– 22" x 9" bright machined-aluminum with bright Silver finish (SIY)	–	–	○
Wipers – front, Rainsense with variable delay (intermittent)	●	●	●
– rear with variable delay (intermittent)	●	●	●
INTERIOR			
Air conditioning – tri-zone automatic climate controls with humidity sensor and individual climate settings for driver, right-front passenger and rear passengers	●	●	●
Cargo area – underfloor Cargo Management System	●	●	●
– cargo net (deleted on LS when Custom Edition or Custom Midnight Edition is specified)	●	●	●
Console – front centre floor with cupholders, storage compartment, and rear-seat audio and climate controls (deleted on LS when front 40/20/40 split-bench seat is specified)	●	●	●
– overhead with sunglasses holder and conversation mirror	●	●	●
Cruise control – electronic with set and resume speed	●	●	●
– Adaptive Cruise Control – Advanced ² (requires available enhanced Driver Information Centre)	–	–	○
Defogger – electric rear-window	●	●	●
Door locks – power, programmable with lock-out protection	●	●	●
Floor mats – front and 2nd row, carpeted	●	●	●
Instrumentation – analogue gauges (includes speedometer, tachometer, coolant temperature, oil pressure, voltmeter and fuel gauges)	●	●	●
– Driver Information Centre (includes multi-colour 4.2-in. diagonal display with digital speedometer, compass, average fuel consumption, fuel range, transmission fluid temperature, engine hour meter, average speed, vehicle programmable features, and indicators for Active Fuel Management, low fuel and Oil Life Monitoring System)	●	●	●
– Driver Information Centre, enhanced (includes multi-colour reconfigurable 8-in. diagonal display and Head-Up Display [HUD] instrumentation)	–	–	○
Keyless Entry – Remote Keyless Entry, programmable with panic feature, extended-range	●	●	–
– Keyless Open and Start – passive entry with Push-Button Start, extended-range Remote Keyless Entry System and panic feature (requires available Luxury Package on LT)	–	○	●

¹ To avoid the risk of injury, never use recovery hooks to tow a vehicle. See the Owner's Manual for more information. ² Read the vehicle Owner's Manual for important feature limitations and information. † All-season tires may not satisfy winter tire requirements in all regions of the country. Tires specifically designed for severe winter conditions and marked with the "winter tire" symbol  may be required during certain months or in certain regions. Contact your Provincial, Municipal or local road authority for information regarding which tires are required in your particular area.

SPECIFICATIONS (CONTINUED)

● STANDARD ○ AVAILABLE – NOT AVAILABLE

	LS	LT	PREMIER
INTERIOR (CONTINUED)			
Lighting – dome, delayed entry/exit, theatre dimming, front- and 2nd-row reading lamps, cargo area, and illuminated entry and exit feature	●	●	●
Mirror – rear-view, manual day/night	●	–	–
– rear-view, auto-dimming	–	●	●
Pedals – power-adjustable, accelerator and brake (requires available Enhanced Driver Alert Package on LS)	○	●	●
Power outlets – 110-volt AC, on rear of centre console	●	●	●
– five 12-volt auxiliary, includes outlets on instrument panel, centre console and back of console, and in 3rd row and cargo area	●	●	●
Steering column – manual tilt	●	–	–
– manual tilt and telescopic	–	●	–
– power tilt and telescopic (requires available Luxury Package on LT)	–	○	●
Steering wheel – leather-wrapped with mounted audio, cruise and phone controls	●	●	●
– heated (requires available Luxury Package on LT)	–	○	●
Sunroof – power, tilt/sliding glass panel with sunshade, express-open/-close feature and wind deflector	–	○	○
Universal Home Remote – programmable, includes garage door opener	–	●	●
Vehicle starter system – remote	●	●	●
Visors – driver and front passenger, covered illuminated vanity mirrors	●	●	●
Windows – power, driver and front-passenger express-up/-down, all others express-down	●	●	●
SEATING			
Front – bucket seats, includes centre floor console with storage, cupholders and auxiliary input jack	●	●	●
– 40/20/40 split-bench seat, includes centre fold-down armrest with storage (includes USB port ¹ , auxiliary power outlet and input for audio system)	○	–	–
2nd-row – manual-folding 60/40 split-bench seat	●	●	–
– bucket seats with manual-release	–	○	–
– bucket seats with power-release (requires available Luxury Package on LT)	–	○	●
– 60/40 split-bench seat with power-release (requires available Luxury Package on LT)	–	○	○
3rd-row – manual-folding 60/40 split-bench seat	●	●	–
– power-folding 60/40 split-bench seat (requires available Luxury Package on LT)	–	○	●

	LS	LT	PREMIER
SEATING (CONTINUED)			
Seat – power 10-way driver adjuster, includes power recliner and power 2-way lumbar control	●	●	–
– power 12-way driver adjuster, includes power recliner and power 4-way lumbar control	–	–	●
– power 6-way front-passenger adjuster, includes power recliner and power 2-way lumbar control	●	–	–
– power 2-way front-passenger adjuster, includes power recliner and power 2-way lumbar control (included with available front-row 40/20/40 split-bench seat)	○	–	–
– power 10-way front-passenger adjuster, includes power recliner and power 2-way lumbar control	–	●	–
– power 12-way front-passenger adjuster, includes power recliner and power 4-way lumbar control	–	–	●
Heated – driver and front-passenger seats	–	●	●
– second-row outboard seating positions (requires available Luxury Package on LT)	–	○	●
Ventilated driver and front-passenger seats	–	–	●
Memory – recalls two pre-sets for power driver seat and power-adjustable accelerator and brake pedals	–	●	●
– recalls two pre-sets for power driver seat, exterior mirrors, power tilt and telescopic steering column, and power-adjustable accelerator and brake pedals (requires available Luxury Package on LT)	–	○	●
INFOTAINMENT			
Chevrolet Infotainment System ² with 8-in. diagonal colour touch-screen, AM/FM stereo, HD Radio [®] , single-slot CD/MP3 player, Bluetooth [®] audio streaming ³ , in-vehicle apps ⁴ , and Apple CarPlay ^{®5} and Android Auto ^{™6} compatibility	●	●	–
Chevrolet Infotainment System ² with Navigation ⁷ , includes features listed above and GPS navigation system	–	○	●
Audio – 6-speaker system	●	–	–
– 9-speaker Bose premium audio system with Richbass subwoofer in centre console	–	●	–
– 10-speaker Bose Centerpoint surround sound premium audio system	–	–	●
Media – five USB ports ¹ and auxiliary input jack	●	●	●
Rear-Seat Entertainment System, includes rear-seat Blu-ray [®] /DVD player, remote control, 2nd-row overhead display, Wi-Fi ^{®8} wireless projection capability, two 2-channel wireless digital headphones, auxiliary HDMI/MHL audio/video connector and two USB ports ¹ (deletes standard single-slot CD/MP3 player)	–	○	○
Wireless charging ⁹	–	–	●
SiriusXM ^{®10} – All Access Package with 3-month trial subscription	●	●	●
Built-in 4G LTE Wi-Fi [®] Hotspot ⁹ , includes 1-month or 3 GB data plan trial (whichever comes first) from trial activation date	●	●	●
Chevrolet Connected Access ¹¹ includes 10 years of standard connectivity and enables features such as Vehicle Diagnostics ¹² and Dealer Maintenance Notification ¹²	●	●	●

¹ Not compatible with all devices. ² Chevrolet Infotainment System functionality varies by model. Full functionality requires compatible Bluetooth and smartphone, and USB connectivity for some devices. Data plan rates may apply. ³ Visit my.gm.ca/Chevrolet/en/learnAbout/bluetooth for more information. Full Bluetooth feature functionality varies by device, model and/or vehicle configuration, and software version. ⁴ Additional data plan rates may apply. Available on select GM vehicles with compatible hardware. Third-party trademarks are the property of their respective third-party owners and used under agreement. Visit onstar.ca for service limitations, availability and service plan details. Requires active connected vehicle services and data plan or connection to an external Wi-Fi Hotspot. Vehicle data plans provided by AT&T or its local service provider. Services are subject to user terms and limitations. Visit onstar.ca for more details. ⁵ Vehicle user interface is a product of Apple and its terms and privacy statements apply. Requires compatible iPhone and data plan rates apply. ⁶ Vehicle user interface is a product of Google and its terms and privacy statements apply. Requires the Android Auto app on Google Play and an Android compatible smartphone running Android 5.0 Lollipop or higher. Data plan rates apply. ⁷ Detailed map coverage is available for most major urban areas of the United States and for certain metropolitan areas of Canada (Vancouver, Calgary, Edmonton, Winnipeg, Windsor, London, Toronto, Ottawa, Montreal, Quebec City and Halifax). Coverage is significantly limited outside these areas. ⁸ Visit onstar.ca for vehicle availability, coverage maps, details and system limitations. Services and connectivity may vary by model and/or vehicle configuration and conditions as well as geographical and technical restrictions. 4G LTE service available in select markets. Requires active connected vehicle services and a data plan to access the vehicle's built-in Wi-Fi Hotspot. Accessory Power must be active to use the Wi-Fi Hotspot. Data plans provided by AT&T or its local service provider. Credit card is required for purchase. ⁹ The system wirelessly charges one compatible mobile device. Some devices require an adaptor or back cover. See myChevrolet.ca for more information. ¹⁰ Available in 10 Canadian provinces, 3 territories and the 48 contiguous United States. Subscription sold separately after trial period. If you decide to continue your service at the end of your trial subscription, the plan you choose will automatically renew and bill at then-current rates until you call 1-888-539-7474 to cancel. Other fees and taxes will apply. All fees and programming subject to change. See the Customer Agreement for complete terms at siriusxm.ca/terms. ¹¹ Limitations apply. Not transferable. Standard connectivity available to original purchaser for 10 years from the trial activation date for properly equipped vehicles. Visit onstar.ca for details and further plan limitations. Connected Access does not include emergency or security services. Availability of Connected Access and any of its services is dependent on compatible 4G LTE wireless networks and is also subject to change. ¹² Capabilities vary by model and/or vehicle configuration and service plan. Visit onstar.ca for vehicle availability. Message and data rates may apply. Requires active service, email address on file and enrollment in Vehicle Diagnostics. Not all issues will deliver alerts. On-Demand Diagnostics requires a paid service plan.

SPECIFICATIONS (CONTINUED)

● STANDARD ○ AVAILABLE – NOT AVAILABLE

	LS	LT	PREMIER
PACKAGES AND SPECIAL EDITIONS			
Max Trailering Package	○	○	○
Includes 3.42 rear axle ratio and integrated trailer brake controller; LS and LT include Z85 Suspension Package; 4x4 models include Autotrac 2-speed active transfer case			
Custom Edition	○	–	–
Includes 18" painted-aluminum wheels (RCV), chrome grille insert, Jet Black Premium Cloth seating and 3rd-row passenger seat delete			
Custom Midnight Edition	○	–	–
Includes 18" Black-painted aluminum wheels (REG), Goodyear Wrangler DuraTrac® tires, Black tubular assist steps, Black recovery hooks, Black Chevrolet bowtie emblems, Black exterior colour, Jet Black Premium Cloth seating, and 3rd-row passenger seat delete			
Enhanced Driver Alert Package	○	–	–
Includes power-adjustable pedals, Automatic Emergency Braking, Forward Collision Alert, IntelliBeam headlamps, Lane Keep Assist with Lane Departure Warning and Safety Alert Seat for driver			
LT Midnight Edition	–	○	–
Includes 20" Black-painted aluminum wheels (NZQ), P275/55R20 all-season† tires, Black Chevrolet bowtie emblems, Black roof-mounted side rails and Black exterior colour			
Z71 Off-Road Package	–	○	–
Includes Z71 Off-Road Suspension, 3.42 rear axle ratio, Autotrac 2-speed active transfer case, high-capacity air filter, Hill Descent Control, Front and Rear Park Assist, Black recovery hooks, fog lamps, and Z71-specific features including unique grille design, skid plates, 18" painted-aluminum wheels (RCV) with all-terrain tires, Black tubular assist steps, front sill plates, rubber floor mats with Z71 logo, Z71 decal on instrument cluster, and Z71 badges on pillar and liftgate (4x4 models)			
Z71 Midnight Edition	–	○	–
Includes Z71 Off-Road Package content plus 18" Black-painted aluminum wheels (REG), Goodyear Wrangler DuraTrac® tires, Black Chevrolet bowtie emblems, unique Z71 Midnight grille, Black roof rack cross rails and Black exterior colour (4x4 models)			

	LS	LT	PREMIER
PACKAGES AND SPECIAL EDITIONS (CONTINUED)			
Luxury Package	–	○	–
Includes power-folding heated power remote control exterior mirrors with integrated turn signal indicators, ground illumination and driver-side auto-dimming feature, fog lamps, hands-free programmable power liftgate, body-colour trailer hitch closeout panel, Front and Rear Park Assist, Rear Cross Traffic Alert, Lane Change Alert with Side Blind Zone Alert, Keyless Open and Start, power tilt and telescopic steering column, heated steering wheel, 2nd-row 60/40 split-bench seat with power-release, 2nd-row heated outboard seating positions, 3rd-row power-folding 60/40 split-bench seat, and memory for exterior mirrors and steering column settings			
Sun, Entertainment and Destinations Package	–	○	○
Includes power sunroof and Rear-Seat Entertainment System content (includes Chevrolet Infotainment System with Navigation on LT)			
Theft Protection Package	–	○	○
Includes self-powered horn, interior movement and vehicle inclination sensors, door and liftgate lock shields, and glass breakage sensors in rear quarter glass and liftgate window; removes sunglasses holder and conversation mirror from overhead console (requires available Luxury Package on LT)			
RST Edition	–	○	○
Includes 22" Gloss Black-painted aluminum wheels with custom Silver accents (SGK), Black Chevrolet bowtie emblems, unique Gloss Black sport grille with body-colour surround, body-colour door handles and headlamp accents, and Black mirror caps, beltline mouldings, roof-mounted side rails, nameplate badging, and unique RST emblem; LT includes Z85 Suspension Package (available with Silver Ice Metallic, Summit White, Black or Shadow Grey Metallic exterior colours)			
RST 6.2L Performance Edition	–	–	○
Includes 6.2L EcoTec3 V8 engine, 10-speed automatic transmission, performance-calibrated Magnetic Ride Control suspension, high-capacity air filter, 3.23 rear axle ratio, Autotrac 2-speed active transfer case and integrated trailer brake controller (requires available RST Edition)			
6.2L Performance Package	–	–	○
Includes 6.2L EcoTec3 V8 engine, 10-speed automatic transmission, high-capacity air filter, 3.23 rear axle ratio, Autotrac 2-speed active transfer case, integrated trailer brake controller and enhanced Driver Information Centre with multi-colour reconfigurable 8-in. diagonal display and Head-Up Display instrumentation			
Premier 6.2L Value Package	–	–	○
Includes 6.2L Performance Package content, power sunroof and All-Weather Floor Liner Package			

1 To avoid the risk of injury, never use recovery hooks to tow a vehicle. See the Owner's Manual for more information. 2 Read the vehicle Owner's Manual for important feature limitations and information. 3 Chevrolet Infotainment System functionality varies by model. Full functionality requires compatible Bluetooth and smartphone, and USB connectivity for some devices. Data plan rates may apply. 4 Detailed map coverage is available for most major urban areas of the United States and for certain metropolitan areas of Canada (Vancouver, Calgary, Edmonton, Winnipeg, Windsor, London, Toronto, Ottawa, Montreal, Quebec City and Halifax). Coverage is significantly limited outside these areas. † All-season tires may not satisfy winter tire requirements in all regions of the country. Tires specifically designed for severe winter conditions and marked with the "winter tire" symbol may be required during certain months or in certain regions. Contact your Provincial, Municipal or local road authority for information regarding which tires are required in your particular area.

DIMENSIONS



EXTERIOR, mm (in.)	
Wheelbase	2946 (116.0)
Length	5182 (204.0)
Width	2045 (80.5)
Height	1890 (74.4)
Front Track	1745 (68.7)
Rear Track	1744 (68.7)
INTERIOR, mm (in.) front row/2nd row/3rd row	
Headroom	1087/983/968 (42.8/38.7/38.1)
Legroom	1151/991/630 (45.3/39.0/24.8)
Shoulder Room	1646/1654/1590 (64.8/65.1/62.6)
Hip Room	1544/1532/1252 (60.8/60.3/49.3)
CAPACITIES	
Maximum Cargo Area, L (cu. ft.) ¹	
– Behind 3rd-row Seats	433 (15.3)
– 3rd-row Seats Folded	1464 (51.7)
– 2nd- and 3rd-row Seats Folded	2682 (94.7)
Fuel Tank, L (imp. gal.)	98 (21.6)
Maximum Payload, lb. (kg) ²	
– 2WD	1720 (780)
– 4x4	1670 (758)
Maximum Towing Capacity, lb. (kg) ³	
– 2WD	8600 (3901)
– 4x4	8400 (3810)

CURB WEIGHT, lb. (kg)		
– 2WD 5.3L V8	5355 (2429)	
– 4x4 5.3L V8	5602 (2541)	
– 4x4 6.2L V8	5772 (2618)	
ESTIMATED FUEL CONSUMPTION RATINGS, L/100 km (mpg) ⁴	CITY	HIGHWAY
5.3L V8 – 2WD	15.7 (18)	10.5 (27)
5.3L V8 – 4x4	16.0 (18)	11.2 (25)
6.2L V8 – 4x4	16.5 (17)	10.9 (26)

¹ Cargo and load capacity limited by weight and distribution. ² These maximum payload ratings are intended for comparison purposes only. Before you buy a vehicle or use it to haul people or cargo, carefully review the Vehicle Loading section of the Owner's Manual and check the carrying capacity of your specific vehicle on the label on the inside of the driver door jamb. ³ Requires 5.3L V8 engine and available Max Trailering Package. Before you buy a vehicle or use it for trailering, carefully review the Trailering section of the Owner's Manual. The weight of passengers, cargo and options or accessories may reduce the amount you can tow. ⁴ Fuel consumption estimates based on GM testing in accordance with Government of Canada approved test methods. Refer to vehicles.nrcan.gc.ca for details. Your actual fuel consumption will vary.



Experience Chevrolet Complete Care, a comprehensive package of owner benefits that are included with every new 2020 Chevrolet Tahoe leased or purchased in Canada.

Chevrolet Complete Care coverage includes:

2-year/24,000 km¹ 2 Complimentary Lube-Oil-Filter Program.²

3-year/60,000 km¹ Base Warranty Coverage.³

5-year/100,000 km¹ Powertrain Component Warranty Coverage.³

5-year/100,000 km¹ Courtesy Transportation.⁴

5-year/100,000 km¹ 24/7 Roadside Assistance.⁴

6-year/160,000 km¹ Sheet Metal rust-through perforation coverage.³

1-month trial of Chevrolet Connected Services and 1 month of OnStar Safety & Security coverage.⁵

Chevrolet Connected Access⁶ includes 10 years of standard connectivity and enables services such as Vehicle Diagnostics⁷ and Dealer Maintenance Notification.⁷

Other ownership privileges and programs:⁸

- Chevrolet Protection Plan — the only extended service plan backed by the resources and commitment of General Motors. The Chevrolet Protection Plan may be purchased at the time of vehicle sale or subsequently during the Base Warranty Coverage period.⁹
- Chevrolet Owner Centre — Everything you need to know. Anything you need to do. Your Chevrolet Owner Centre makes it easy. Create your account today to get the most out of your new vehicle. Get special alerts and offers, schedule service, review your maintenance schedule, and view how-to videos specifically for your vehicle. All online, anytime. Visit the Owner Centre today to register or take a tour. Find out more at mychevrolet.ca.
- Discount Programs — save on your next vehicle. Students or recent graduates,⁸ people with disabilities⁸ and military personnel⁸ you may be eligible¹⁰ for a discount on select new Chevrolet vehicles leased or purchased. Combine your discount with great retail offers for an exceptional value. For full details on all programs offered in Canada, visit programs.gm.ca.
- GM Card[®] — Cardholders may redeem Earnings towards the total purchase price or lease down payment of an eligible new Chevrolet car, truck or crossover. Restrictions and limitations apply. For full program details, visit gmcad.ca.

Chevrolet ownership experience. Chevrolet is committed to enhancing the vehicle shopping and ownership experience through a wide array of programs. Visit chevrolet.ca to build and price, find a vehicle, request a quote, compare vehicles, find financial tools or track your vehicle order. You'll also find information about 24-hour Roadside Assistance, Courtesy Transportation, Customer Assistance, GM Mobility, safety and current incentives.

Important words about this brochure. Some of the equipment shown or described throughout this brochure may be available at extra cost. We have tried to make this brochure comprehensive and factual. We reserve the right, however, to make changes at any time, without notice, in prices, colours, materials, equipment, specifications, models and availability. Specifications, dimensions, measurements, ratings and other numbers in this brochure and other printed materials provided at the dealership or affixed to vehicles are approximates based on design and engineering drawings, prototypes and laboratory tests. Your vehicle may differ due to variations in manufacture and

equipment. Since some information may have been updated since the time of printing, please check with your Chevrolet dealer for complete details. General Motors of Canada Company reserves the right to lengthen or shorten the model year for any product, for any reason, or to start and end model years at different times. Certain vehicle features may lose their usefulness over time due to obsolescence from technological changes. Unless otherwise noted, all claims based on based on GM Large SUV segment and the latest available competitive information. Excludes other GM vehicles.

Engines. Chevrolet products are equipped with engines produced by GM Global Propulsion Systems or other suppliers to GM worldwide. The engines in Chevrolet products may also be used in other GM makes and models.

Assembly. Chevrolet vehicles and their components are assembled or produced by different operating units of General Motors, its subsidiaries or suppliers to GM worldwide. We sometimes find it necessary to produce Chevrolet vehicles with different or differently sourced components than originally scheduled. Since some options may be unavailable when your vehicle is assembled, we suggest you verify that your vehicle includes the equipment you ordered and that, if there were changes, they are acceptable to you.

Fleet orders. Some standard content and owner benefits may be modified or deleted on fleet orders. See dealer for details.

An important note about alterations and warranties. Installations or alterations to the original equipment vehicle (or chassis) as distributed by General Motors are not covered by the New Vehicle Limited Warranty. The special body company, assembler, equipment installer or upfitter is solely responsible for warranties on the body or equipment and any alterations (or any effect of the alterations) to any of the parts, components, systems or assemblies installed by GM. General Motors is not responsible for the safety or quality of design features, materials or workmanship of any alterations by such suppliers.

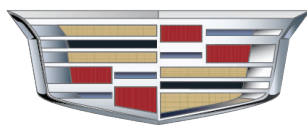
Trademarks. The marks appearing in this brochure including, but not limited to, General Motors, GM, Chevrolet, the Chevrolet emblem, Tahoe and their respective logos, emblems, slogans and vehicle model names and body designs; and other marks such as Active Fuel Management, Duralife, EcoTec3, Find New Roads, IntelliBeam, Magnetic Ride Control, myChevrolet, OnStar, the OnStar emblem, Rainsense and StabiliTrak are trademarks of General Motors LLC, OnStar LLC and/or General Motors of Canada Company, its subsidiaries, affiliates or licensors. Apple, Apple CarPlay and iPhone are trademarks of Apple Inc., registered in the U.S. and other countries. Bluetooth is a registered trademark of Bluetooth SIG, Inc. Blu-ray is a registered trademark of the Blu-ray Disc Association. Bose and Centerpoint are registered trademarks and Richbass is a trademark of the Bose Corporation. Facebook is a registered trademark of Facebook Inc. DuraTrac and Wrangler are registered trademarks of THE GOODYEAR TIRE & RUBBER COMPANY. Goodyear is a registered trademark of GOODYEAR CANADA INC. HD Radio is a registered trademark of iBiquity Digital Corporation. © 2019 Sirius XM Canada Inc. "SiriusXM," the SiriusXM logo, channel names and logos are registered trademarks of Sirius XM Radio Inc. and are used under license. All rights reserved. Twitter is a trademark of Twitter, Inc. YouTube is a registered trademark and Android, Android Auto and Google Play are trademarks of Google LLC. Wi-Fi is a registered trademark of Wi-Fi Alliance.

© Copyright 2019 General Motors of Canada Company. All rights reserved. All text, images, graphics, and other materials in this brochure are subject to the copyright and other intellectual property rights of General Motors LLC and/or General Motors of Canada Company. These materials may not be reproduced, distributed or modified without the express written permission of General Motors LLC and/or General Motors of Canada Company. September 2019.



¹ Whichever comes first. ² Limit of two (2) Lube-Oil-Filter services during the program period. Fluid top-offs, inspections, tire rotations, wheel alignments and balancing, etc., are not covered. Additional conditions and limitations apply. See participating dealer for details. ³ Conditions and limitations apply. See Warranty Booklet for details. ⁴ Conditions and limitations apply. See Owner's Manual for details. ⁵ Properly equipped Chevrolet vehicles are eligible for 1 month of Connected Services trial and OnStar Safety & Security Plan coverage, starting at trial activation date; includes emergency and navigation services, the Remote Access Plan, plus a 3 GB or 1-month (whichever comes first) data plan trial. Services subject to user terms and limitations, and capabilities vary by model and/or vehicle configuration; visit onstar.ca for details. Data plans offered by AT&T or its local service provider. Availability subject to change. GM Canada may modify, extend or terminate offers for any reason, in whole or in part, at any time, without notice. Requires vehicle electrical system (including battery), wireless service and GPS satellite signal to be available and operating for features to function properly. ⁶ Limitations apply. Not transferable. Standard connectivity available to original purchaser for 10 years from the trial activation date for properly equipped vehicles. See onstar.ca for details and further plan limitations. Connected Access does not include emergency or security services. Availability of Connected Access and any of its services is dependent on compatible 4G LTE wireless networks and is also subject to change. ⁷ Capabilities vary by model and/or vehicle configuration and service plan. Visit onstar.ca for vehicle availability. Message and data rates may apply. Requires active service, email address on file and enrollment in Vehicle Diagnostics. Not all issues will deliver alerts. On-Demand Diagnostics requires a paid service plan. ⁸ Conditions and limitations apply. ⁹ Please work with your dealer to select the plan that is suitable for your driving needs. Dealers are free to set their own prices. ¹⁰ Subject to eligibility.

MURRAY



Cadillac

403.527.1141

WWW.MURRAYCHEV.CA

**1270 TRANS CANADA WAY SE
MEDICINE HAT, AB - T1B 1J5**