

TRAX 2020





# CIVILIZE THE CITY.

Urban living is great except for traffic and parking. That's where the 2020 Chevrolet Trax shines. This practical SUV is built to help get you in and out of tight parking spots while taking you and four friends for a day or night on the town. With its available safety features and surprising cargo flexibility, Trax is ready to take on the demands of the city — and your life.

## FIND NEW ROADS™



Trax Premier in Nightfall Grey  
Metallic (extra-cost colour).



## MODELS

### LS

Step into an SUV that's just right for the city.

Trax is made for today's tight parking spaces and ever-present traffic, with a higher driving position than a car and plenty of comfort and utility inside.

Every Trax is well equipped, with Remote Keyless Entry, air conditioning, power windows and door locks, the Chevrolet Infotainment 3 system<sup>1</sup> and a Rear Vision Camera<sup>2</sup>.

### LT

Take a step up in style with many convenient and useful features for your driving needs.

Halogen projector-style headlamps light up the road in front of you, and heated power-adjustable outside body-colour mirrors stay clear in icy weather.

You can opt for the available True North Edition as well as the available Redline Edition to give your Trax a distinctive, sporty look.

Top: Trax LS in Nightfall Grey Metallic (extra-cost colour).

Bottom: Trax LT in Silver Ice Metallic.



<sup>1</sup> Chevrolet Infotainment System functionality varies by model. Full functionality requires compatible Bluetooth and smartphone, and USB connectivity for some devices. Data plan rates may apply. <sup>2</sup> Read the vehicle Owner's Manual for important feature limitations and information.

## MODELS

### PREMIER

Meet the Trax that's always dressed for the occasion.

Grab onto a 3-spoke leather-wrapped steering wheel with mounted cruise, audio and phone controls. Leatherette seats are standard.


You'll also receive a complement of active safety technology, including Forward Collision Alert<sup>1</sup>, Lane Departure Warning<sup>1</sup>, Side Blind Zone Alert<sup>1</sup>, Rear Cross Traffic Alert<sup>1</sup> and Rear Park Assist<sup>1</sup>. In addition, all-wheel drive (AWD) can assist when the road conditions are not ideal.

Aluminum 18-in. wheels add a strong presence and a power sunroof provides the finishing touch.

Trax Premier in Pacific Blue Metallic (extra-cost colour).



<sup>1</sup> Read the vehicle Owner's Manual for important feature limitations and information.

A wide-angle, driver's perspective view of the interior of a Chevrolet Trax Premier. The dashboard is black with a large central infotainment screen displaying various icons. The steering wheel is black with a silver Chevrolet bowtie logo in the center. The seats are black leather with contrasting orange stitching. The center console has a gear shifter and handbrake. The background shows a street scene through the windshield.

Trax Premier interior in Jet Black  
with available features.

## INTERIOR DESIGN

# TAILORED EXACTLY FOR YOU.

A dual cockpit design creates attractive symmetry. And many of the tactile surfaces are made of supple materials that provide a soft, rich feel.

The Trax interior provides attention to detail that you'll appreciate. Contrasting stitching accents the seats. Premier models include heated driver and front passenger seats.







## INTERIOR FEATURES

### TAKE IT ALL WITH YOU.

Flexibility is what makes Trax so easy to love. You can seat five people, and there are eight different ways to carry passengers and cargo wherever you're going.

With a **60/40 split-folding rear seat** and a fold-flat front passenger seat, you can carry items up to 2 m (8 ft.) long. Plus, there's up to **1371 L (48.4 cu. ft.)<sup>1</sup> of maximum cargo space** with the rear seats folded down.

A **Driver Information Centre** lets you view information such as fuel range, oil life, tire pressure<sup>2</sup> and more.

<sup>1</sup> Cargo and load capacity limited by weight and distribution. <sup>2</sup> Does not monitor spare tire.



myChevrolet® App<sup>1</sup> available to download, includes remote vehicle start capability<sup>2</sup> if properly equipped.

Two convenient USB ports<sup>3</sup> and an auxiliary input jack.

Android Auto™<sup>4</sup> compatibility.

Keyless Open and Start. Standard on Premier and available on LT.



<sup>1</sup> Available on select Apple and Android devices. Service availability, features and functionality are subject to limitations and vary by model and/or vehicle configuration, device and the plan in which you are enrolled. Device data connection required. Visit [onstar.ca](http://onstar.ca) for more details. <sup>2</sup> Requires subscription to Remote Access Plan or Premium Access Plan. Services are subject to user terms and limitations and vary by model and/or vehicle configuration. Remote start requires GM factory-installed and enabled remote start system. Visit [onstar.ca](http://onstar.ca) for more details. <sup>3</sup> Not compatible with all devices. <sup>4</sup> Vehicle user interface is a product of Google and its terms and privacy statements apply. Requires the Android Auto app on Google Play and an Android compatible smartphone running Android 5.0 Lollipop or higher. Data plan rates apply.





## TECHNOLOGY

# CONNECT TO WHAT MATTERS.

- The Chevrolet Infotainment 3 system<sup>1</sup> is intuitive and easy to use with the 7-in. diagonal colour touch-screen display.
- Built-in 4G LTE Wi-Fi<sup>®</sup> Hotspot<sup>2</sup> (data plan required) provides a fast Internet connection for up to seven devices.
- Apple CarPlay<sup>®</sup> compatibility<sup>3</sup>

<sup>1</sup> Chevrolet Infotainment System functionality varies by model. Full functionality requires compatible Bluetooth and smartphone, and USB connectivity for some devices. Data plan rates may apply. <sup>2</sup> Visit [onstar.ca](http://onstar.ca) for vehicle availability, coverage maps, details and system limitations. Services and connectivity may vary by model and/or vehicle configuration and conditions as well as geographical and technical restrictions. 4G LTE service available in select markets. Requires active connected vehicle services and a data plan to access the vehicle's built-in Wi-Fi Hotspot. Accessory Power must be active to use the Wi-Fi Hotspot. Data plans provided by AT&T or its local service provider. Credit card is required for purchase. <sup>3</sup> Vehicle user interface is a product of Apple and its terms and privacy statements apply. Requires compatible iPhone and data plan rates apply.

## SAFETY AND DRIVER ASSISTANCE

### READY AND VIGILANT.



**Forward Collision Alert.** This feature monitors how close your vehicle is to the detected vehicle in front of you and can alert you to a potential crash. Standard on Premier.



**Lane Departure Warning.** This camera-based system reads traffic lane markings when identifiable and provides alerts if you unintentionally drift out of your lane without using a turn signal. Standard on Premier.



**Side Blind Zone Alert.** This feature can provide side mirror alerts when a moving vehicle is detected in a side blind zone. Standard on Premier. Available on LT.



**Rear Cross Traffic Alert.** This feature can alert you to detected vehicles crossing behind your Trax when backing up. Standard on Premier. Available on LT.



**Rear Vision Camera.** When travelling in Reverse at low speeds, this feature helps provide a view of the area immediately behind your Trax. Standard on all models.



**Rear Park Assist.** When travelling in Reverse at low speeds, this feature can provide distance alerts when it detects certain stationary objects in close proximity behind the vehicle. Standard on Premier. Available on LT.



**10 standard airbags!** Every Trax includes frontal and knee airbags for driver and front passenger and head-curtain and seat-mounted side-impact airbags for all outboard seating positions.

**OnStar Automatic Crash Response.** In a crash, built-in sensors are designed to send a signal that can automatically connect you to a specially trained, Emergency Medical Dispatch-certified Advisor<sup>2</sup> who can help you get the assistance you need – even if you can't ask for it. Advisors can use GPS technology to pinpoint your vehicle's approximate location and contact first responders to get you help. OnStar Automatic Crash Response is included in the available paid OnStar Safety & Security Plan<sup>3</sup>

**Safety starts with you.** Safety or driver assistance features are no substitute for the driver's responsibility to operate the vehicle in a safe manner. The driver should remain attentive to traffic, surroundings and road conditions at all times. Visibility, weather and road conditions may affect feature performance. Read the vehicle Owner's Manual for more important feature limitations and information.

<sup>1</sup> A NOTE ON CHILD SAFETY: Always use seat belts and the correct child restraint for your child's age and size, even with airbags. Even in vehicles equipped with the Passenger Sensing System, children are safer when properly secured in a rear seat in the appropriate infant, child or booster seat. Never place a rear-facing infant restraint in the front seat of any vehicle equipped with an active frontal airbag. See your vehicle Owner's Manual and the child safety seat instructions for more safety information. <sup>2</sup> OnStar Advisors are certified by the International Academies of Emergency Dispatch. <sup>3</sup> Requires vehicle electrical system (including battery), wireless service and GPS satellite signal to be available and operating for features to function properly. Services are subject to user terms and limitations, and may vary by model and/or vehicle configuration. Not all vehicles may transmit all crash data. OnStar acts as a link to existing emergency service providers. Visit [onstar.ca](http://onstar.ca) for more details.







Trax Premier in Silver Ice Metallic.

## PERFORMANCE

# DRIVE LIKE YOU BELONG HERE.

- 138-horsepower ECOTEC® 1.4L turbocharged 4-cylinder engine with 148 lb.-ft. of torque.
- Electronically controlled 6-speed automatic transmission with overdrive and Driver Shift Control.
- Standard front-wheel drive (FWD) or available all-wheel drive (AWD) that engages automatically when accelerating from a standing start and shifts back to FWD when no longer needed.





## SPECIAL FEATURES



<sup>1</sup> Accessory warranty coverage, if any, varies. See your GM Warranty Booklet or GM dealer for details.

## EXTERIOR COLOURS



G7Q – Nightfall Grey Metallic<sup>1</sup>



G9K – Satin Steel Metallic<sup>1</sup>



GAN – Silver Ice Metallic



GAZ – Summit White



GB0 – Mosaic Black Metallic<sup>1</sup>



GPJ – Cajun Red Tintcoat<sup>1,2</sup>



GUM – Pacific Blue Metallic<sup>1,2</sup>

<sup>1</sup> Available at extra cost. <sup>2</sup> Not available on LS.



# MODELS



**LS** Trax LS includes these features:

## MECHANICAL

**Brakes** – 4-wheel Anti-lock Braking System (ABS), Panic Brake Assist and Hill Start Assist

**Engine** – ECOTEC 1.4L turbocharged DOHC I-4 with Variable Valve Timing (VVT) and oil pan heater

**StabiliTrak®** – Electronic Stability Control System with Traction Control

**Transmission** – 6-speed automatic with overdrive and Driver Shift Control

## EXTERIOR

**Daytime running lamps** – reduced intensity low beam

**Door handles** – body-colour

**Glass** – solar-absorbing tinted; acoustic-laminated windshield

**Headlamps** – halogen reflector, automatic on/off with automatic delay

**Mirrors** – power remote control, body-colour caps with Black base

**Mouldings** – Black beltline

**Tire** – compact spare

**Tires** – P205/70R16 all-season<sup>1</sup>

**Wipers** – front variable-speed, intermittent with washers; rear intermittent with washer

## INTERIOR

**Air conditioning** – manual, single-zone with particle air filter

**Audio** – 6-speaker system

**Compass** – digital, in Driver Information Centre

**Door locks** – power, programmable with lock-out protection and manual rear door child security

**Driver Information Centre** – 3.5-in. diagonal monochromatic display

**Entertainment** – Chevrolet Infotainment 3 system<sup>1</sup> with 7-in. diagonal colour touch-screen, AM/FM stereo, Bluetooth® audio streaming<sup>2</sup> for two active devices, voice command pass-through to compatible phone, and Apple CarPlay<sup>®3</sup> and Android Auto™<sup>4</sup> compatibility

**Lighting** – front-seat reading lamps, overhead courtesy lamp and rear cargo area lamp



Jet Black Cloth



Light Ash Grey Cloth (shown)



16" painted-aluminum wheels (RRZ)  
Standard on LS

## INTERIOR (CONTINUED)

**Media** – two USB ports<sup>5</sup> and auxiliary input jack

**Rear Vision Camera**<sup>6</sup>

**Remote Keyless Entry** – with panic alarm

**Seat** – driver 4-way manual adjuster with inside armrest and power 2-way lumbar adjuster

**Seat** – fold-flat front passenger seatback

**Seats** – rear, 60/40 split-folding bench

**Steering column** – manual tilt and telescopic


**Steering wheel** – mounted audio and phone controls

**Theft-deterrent system** – unauthorized entry

**Tire Pressure Monitoring System** (does not monitor spare tire)

**Visors** – driver and front passenger, covered vanity mirrors

**Windows** – power with driver express-up/-down, all others express-down; rear window lock-out feature

<sup>1</sup> Chevrolet Infotainment System functionality varies by model. Full functionality requires compatible Bluetooth and smartphone, and USB connectivity for some devices. Data plan rates may apply. <sup>2</sup> Visit [my.gm.ca/Chevrolet/en/learnAbout/bluetooth](http://my.gm.ca/Chevrolet/en/learnAbout/bluetooth) for more information. Full Bluetooth feature functionality varies by device, model and/or vehicle configuration, and software version. <sup>3</sup> Vehicle user interface is a product of Apple and its terms and privacy statements apply. Requires compatible iPhone and data plan rates apply. <sup>4</sup> Vehicle user interface is a product of Google and its terms and privacy statements apply. Requires the Android Auto app on Google Play and an Android compatible smartphone running Android 5.0 Lollipop or higher. Data plan rates apply. <sup>5</sup> Not compatible with all devices. <sup>6</sup> Read the vehicle Owner's Manual for important feature limitations and information. † All-season tires may not satisfy winter tire requirements in all regions of the country. Tires specifically designed for severe winter conditions and marked with the "winter tire" symbol  may be required during certain months or in certain regions. Contact your Provincial, Municipal or local road authority for information regarding which tires are required in your particular area.

## MODELS (CONTINUED)



**LT** In addition to or replacing LS features, LT includes:

### EXTERIOR

Daytime running lamps – LED

Fascias – front and rear Silver-painted accents

Glass – deep-tinted on all windows behind front doors

Headlamps – projector-style halogen, automatic on/off with automatic delay

Mirrors – power remote control, heated with body-colour caps and base

Mouldings – bright lower window trim

Roof-mounted side rails

Tail lamps – LED

### INTERIOR

Cargo area – security cover, rigid, removable

Cruise control – electronic with set and resume speed

Power outlet – 110-volt AC on rear of centre console

SiriusXM®<sup>1</sup> – All Access Package with 3-month trial subscription

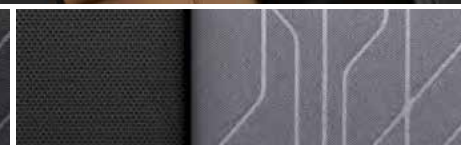
Steering wheel – mounted audio, cruise and phone controls

Storage – under-seat drawer, front passenger

Vehicle starter system – remote



Jet Black Deluxe Cloth



Light Ash Grey Deluxe Cloth



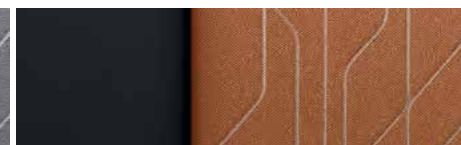
Brandy Deluxe Cloth<sup>2</sup>



Jet Black Deluxe Cloth/Leatherette Seating Surfaces<sup>3</sup>



Light Ash Grey Deluxe Cloth/Leatherette Seating Surfaces<sup>3</sup>



Brandy Deluxe Cloth/Leatherette Seating Surfaces (shown)<sup>2,3</sup>



16" painted-aluminum wheels (RRZ)  
Standard on LT



18" Black-finish aluminum  
wheels with Red accents (REN)  
Included on LT with  
Redline Edition

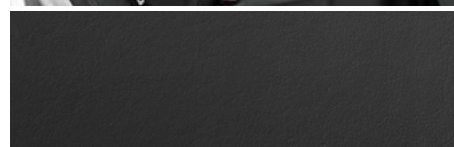


18" Midnight Silver-painted  
aluminum wheels (RRT)  
Available on LT<sup>4</sup>

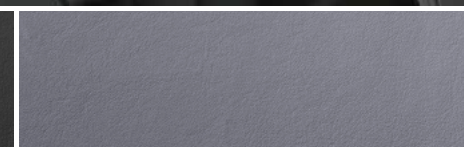
<sup>1</sup> Available in 10 Canadian provinces, 3 territories and the 48 contiguous United States. Subscription sold separately after trial period. If you decide to continue your service at the end of your trial subscription, the plan you choose will automatically renew and bill at then-current rates until you call 1-888-539-7474 to cancel. Other fees and taxes will apply. All fees and programming subject to change. See the Customer Agreement for complete terms at [siriusxm.ca/terms](http://siriusxm.ca/terms). <sup>2</sup> Not available with Silver Ice Metallic exterior colour. <sup>3</sup> Requires available LT Convenience Package or True North Edition. <sup>4</sup> Requires available LT Convenience Package.



## MODELS (CONTINUED)



Jet Black Leatherette Seating Surfaces (shown)



Light Ash Grey Leatherette Seating Surfaces



Brandy Leatherette Seating Surfaces<sup>2</sup>



18" aluminum wheels (RRS)  
Standard on Premier

**PREMIER** In addition to or replacing LT features, Premier includes:

### MECHANICAL

All-wheel drive

### EXTERIOR

Fog lamps

Liftgate handle – chrome accent appliqué

Tires – P215/55R18 all-season<sup>†</sup>

### INTERIOR

Audio – 7-speaker Bose premium system, including Richbass subwoofer

Doorsill plates – front, bright

Forward Collision Alert<sup>1</sup>

Keyless Open and Start

Lane Departure Warning<sup>1</sup>

Mirror – rear-view, auto-dimming

Rear Cross Traffic Alert<sup>1</sup>

Rear Park Assist<sup>1</sup>

Seat – power 6-way driver adjuster with power 2-way lumbar control


Seats – heated, driver and front passenger

Side Blind Zone Alert<sup>1</sup>

Steering wheel – leather-wrapped

Sunroof – power with sunshade and express-open feature

Visors – driver and front passenger, covered illuminated vanity mirrors


<sup>1</sup> Read the vehicle Owner's Manual for important feature limitations and information. <sup>2</sup> Not available with Silver Ice Metallic exterior colour. <sup>†</sup> All-season tires may not satisfy winter tire requirements in all regions of the country. Tires specifically designed for severe winter conditions and marked with the "winter tire" symbol  may be required during certain months or in certain regions. Contact your Provincial, Municipal or local road authority for information regarding which tires are required in your particular area.

## SPECIFICATIONS

● STANDARD ○ AVAILABLE – NOT AVAILABLE

	LS	LT	PREMIER
<b>SAFETY &amp; SECURITY</b>			
Airbags <sup>1</sup> – frontal and knee airbags for driver and front passenger; seat-mounted side-impact and head-curtain airbags for all outboard seating positions; includes front Passenger Sensing System for frontal passenger airbag	●	●	●
Door locks – rear doors, child security	●	●	●
Forward Collision Alert <sup>2</sup>	–	–	●
Lane Departure Warning <sup>2</sup>	–	–	●
OnStar Safety & Security Plan coverage <sup>3</sup> for 1 month from the trial activation date, which includes Automatic Crash Response, Stolen Vehicle Assistance, Roadside Assistance and Turn-by-Turn Navigation	●	●	●
Rear Cross Traffic Alert <sup>2</sup> (requires available True North Edition on LT)	–	○	●
Rear Park Assist <sup>2</sup> (requires available True North Edition on LT)	–	○	●
Rear Vision Camera <sup>2</sup>	●	●	●
Safety restraints – 3-point belts for all seating positions and front seat belt pre-tensioners	●	●	●
– LATCH system (Lower Anchors and Tethers for Children), for child restraint systems	●	●	●
Side Blind Zone Alert <sup>2</sup> (requires available True North Edition on LT)	–	○	●
StabiliTrak – Electronic Stability Control System	●	●	●
Theft-deterrent system – engine immobilizer	●	●	●
– unauthorized entry	●	●	●
Tire Pressure Monitoring System (does not monitor spare tire)	●	●	●
Traction Control – electronic, full-function, all-speed	●	●	●
<b>MECHANICAL</b>			
Battery – maintenance-free with run-down protection	●	●	●
Brakes – 4-wheel Anti-lock Braking System (ABS)	●	●	●
– Panic Brake Assist and Hill Start Assist	●	●	●
– power, front disc/rear drum (FWD models)	●	●	–
– power, 4-wheel disc (AWD models)	○	○	●
Drive – front-wheel (FWD)	●	●	–
– all-wheel (AWD)	○	○	●
Engine – ECOTEC 1.4L turbocharged DOHC I-4 with Variable Valve Timing (VVT); 138 hp @ 4900 rpm, 148 lb.-ft. of torque @ 1850 rpm	●	●	●
Engine oil pan heater	●	●	●
Steering – power, electric, rack-and-pinion	●	●	●
Suspension – front MacPherson strut/rear compound crank	●	●	●
Transmission – 6-speed automatic with overdrive and Driver Shift Control	●	●	●

	LS	LT	PREMIER
<b>EXTERIOR</b>			
Door handles – body-colour	●	●	●
Fascias – front and rear, Silver-painted accents	–	●	●
Glass – solar-absorbing	●	●	●
– acoustic-laminated windshield	●	●	●
– deep-tinted behind front doors	–	●	●
Liftgate handle – body-colour	●	●	–
– chrome accent appliqué	–	–	●
Lighting – daytime running lamps, reduced intensity low beam	●	–	–
– daytime running lamps, LED	–	●	●
– automatic on/off with automatic delay	●	●	●
– halogen headlamps, reflector	●	–	–
– halogen headlamps, projector-style	–	●	●
– fog lamps	–	–	●
– LED tail lamps	–	●	●
Mirrors – power remote control, body-colour caps with Black base	●	–	–
– power remote control, heated with body-colour caps	–	●	●
Mouldings – Black beltline	●	–	–
– chrome beltline	–	●	●
Roof-mounted side rails	–	●	●
Tires – P205/70R16 all-season <sup>†</sup>	●	●	–
– P215/55R18 all-season <sup>†</sup> (requires available Redline Edition or 18" Midnight Silver-painted aluminum wheels on LT)	–	○	●
– compact spare	●	●	●
Wheels – 16" x 6.5" aluminum (RRZ)	●	●	–
– 18" x 7" Black-finish aluminum with Red accents (REN) (requires available Redline Edition)	–	○	–
– 18" x 7" Midnight Silver-painted aluminum (RRT); includes P215/55R18 all-season <sup>†</sup> tires (requires available LT Convenience Package)	–	○	–
– 18" x 7" aluminum (RRS)	–	–	●
Wipers – front, 2-speed with variable delay (intermittent)	●	●	●
– rear with variable delay (intermittent)	●	●	●
<b>INTERIOR</b>			
Air conditioning – manual, single-zone with particle filter	●	●	●
– rear floor heating ducts	●	●	●
Assist handles – driver, front passenger and rear outboard, includes coat hooks on rear handles	●	●	●
Cargo area – 4 cargo tie-downs	●	●	●
– security cargo cover, rigid and removable	–	●	●
– storage tray under cargo floor	●	●	●

**1 A NOTE ON CHILD SAFETY:** Always use seat belts and the correct child restraint for your child's age and size, even with airbags. Even in vehicles equipped with the Passenger Sensing System, children are safer when properly secured in a rear seat in the appropriate infant, child or booster seat. Never place a rear-facing infant restraint in the front seat of any vehicle equipped with an active frontal airbag. See your vehicle Owner's Manual and the child safety seat instructions for more safety information. **2** Read the vehicle Owner's Manual for important feature limitations and information. **3** Properly equipped Chevrolet vehicles are eligible for 1 month of Connected Services trial and OnStar Safety & Security coverage starting at trial activation date; includes emergency and navigation services, the Remote Access Plan, plus a 3 GB or 1-month (whichever comes first) data plan trial. Services subject to user terms and limitations; capabilities vary by model and/or vehicle configuration; visit onstar.ca for details. Data plans offered by AT&T or its local service provider. Availability subject to change. GM Canada may modify, extend or terminate offers for any reason, in whole or in part, at any time, without notice. Requires vehicle electrical system (including battery), wireless service and GPS satellite signal to be available and operating for features to function properly. <sup>†</sup> All-season tires may not satisfy winter tire requirements in all regions of the country. Tires specifically designed for severe winter conditions and marked with the "winter tire" symbol  may be required during certain months or in certain regions. Contact your Provincial, Municipal or local road authority for information regarding which tires are required in your particular area.



## SPECIFICATIONS (CONTINUED)

● STANDARD ○ AVAILABLE – NOT AVAILABLE

	LS	LT	PREMIER
<b>INTERIOR (CONTINUED)</b>			
Cruise control – electronic with set and resume speed	–	●	●
Defogger – electric rear-window	●	●	●
Door locks – power, programmable with lock-out protection	●	●	●
Doorsill plates – front, bright	–	–	●
Floor mats – front and rear, carpeted	●	●	●
Instrumentation – analogue gauges (includes speedometer, tachometer and fuel gauges)	●	●	●
– Driver Information Centre (includes 3.5-in. diagonal monochromatic display with True White backlighting and indicators for low fuel, Oil Life Monitoring System, average fuel consumption, fuel range, driving time, average speed and message centre)	●	●	●
– Exterior temperature and compass display	●	●	●
Lighting – dome, delayed entry/exit, theatre dimming, front reading lamps and cargo area	●	●	●
Keyless Entry – Remote Keyless Entry, programmable with panic alarm, extended-range	●	●	–
– Keyless Open and Start – passive entry with Push-Button Start, extended-range Remote Keyless Entry System and panic alarm (requires available LT Convenience Package or True North Edition on LT)	–	○	●
Keys – foldable	●	●	–
– two spare keys (requires available LT Convenience Package or True North Edition on LT)	–	○	●
Mirror – rear-view, manual day/night	●	●	–
– rear-view, auto-dimming	–	–	●
Power outlets – 12-volt auxiliary, front	●	●	●
– 110-volt AC, on rear of floor console	–	●	●
Retained accessory power	●	●	●
Shifter knob – Satin Silver and chrome finish	●	●	●
Steering column – manual tilt and telescopic	●	●	●
Steering wheel – 3-spoke with audio and phone controls	●	–	–
– 3-spoke with audio, cruise and phone controls	–	●	●
– 3-spoke leather-wrapped with audio, cruise and phone controls (requires available LT Convenience Package or True North Edition on LT)	–	○	●
Sunroof – power with sunshade and express-open feature (requires available True North Edition on LT)	–	○	●
Vehicle starter system – remote	○	●	●
Visors – driver and front passenger, covered vanity mirrors	●	●	–
– driver and front passenger, covered illuminated vanity mirrors	–	–	●
Windows – power, driver express-up/-down, all others express-down; rear window lock-out feature	●	●	●

	LS	LT	PREMIER
<b>SEATING</b>			
Reclining front bucket seats – with adjustable head restraints	●	●	●
– with cloth seating surfaces	●	–	–
– with Deluxe Cloth seating surfaces	–	●	–
– with Deluxe Cloth/Leatherette seating surfaces (requires available LT Convenience Package or True North Edition)	–	○	–
– with leatherette seating surfaces	–	–	●
Seat – manual 4-way driver-seat adjuster with inside armrest and power 2-way lumbar adjuster	●	●	–
– power 6-way driver-seat adjuster with inside armrest and power 2-way lumbar adjuster (requires available LT Convenience Package or True North Edition on LT)	–	○	●
Seatback – flat-folding, front passenger	●	●	●
– rear, 60/40 split-folding	●	●	●
Seats – heated, driver and front passenger	–	–	●
<b>INFOTAINMENT</b>			
Chevrolet Infotainment 3 system <sup>1</sup> with 7-in. diagonal colour touch-screen, AM/FM stereo, Bluetooth® audio streaming <sup>2</sup> for two active devices, voice command pass-through to compatible phone, and Apple CarPlay <sup>®3</sup> and Android Auto™ <sup>4</sup> compatibility	●	●	●
Audio – 6-speaker system	●	●	–
7-speaker Bose premium audio system with Richbass subwoofer (requires available True North Edition on LT)	–	○	●
Media – two USB ports <sup>5</sup> and auxiliary input jack	●	●	●
SiriusXM <sup>®6</sup> – All Access Package with 3-month trial subscription	–	●	●
Built-in 4G LTE Wi-Fi <sup>®</sup> Hotspot <sup>7</sup> ; includes 1-month or 3 GB data plan trial (whichever comes first) from trial activation date	●	●	●
Chevrolet Connected Access <sup>8</sup> includes 10 years of standard connectivity and enables features such as Vehicle Diagnostics <sup>9</sup> and Dealer Maintenance Notification <sup>9</sup>	●	●	●

<sup>1</sup> Chevrolet Infotainment System functionality varies by model. Full functionality requires compatible Bluetooth and smartphone, and USB connectivity for some devices. Data plan rates may apply. <sup>2</sup> Visit [my.gm.ca/Chevrolet/en/learnAbout/bluetooth](http://my.gm.ca/Chevrolet/en/learnAbout/bluetooth) for more information. Full Bluetooth feature functionality varies by device, model and/or vehicle configuration, and software version. <sup>3</sup> Vehicle user interface is a product of Apple and its terms and privacy statements apply. Requires compatible iPhone and data plan rates apply. <sup>4</sup> Vehicle user interface is a product of Google and its terms and privacy statements apply. Requires the Android Auto app on Google Play and an Android compatible smartphone running Android 5.0 Lollipop or higher. Data plan rates apply. <sup>5</sup> Not compatible with all devices. <sup>6</sup> Available in 10 Canadian provinces, 3 territories and the 48 contiguous United States. Subscription sold separately after trial period. If you decide to continue your service at the end of your trial subscription, the plan you choose will automatically renew and bill at then-current rates until you call 1-888-539-7474 to cancel. Other fees and taxes will apply. All fees and programming subject to change. See the Customer Agreement for complete terms at [siriusxm.ca/terms](http://siriusxm.ca/terms). <sup>7</sup> Visit [onstar.ca](http://onstar.ca) for vehicle availability, coverage maps, details and system limitations. Services and connectivity may vary by model and/or vehicle configuration and conditions as well as geographical and technical restrictions. 4G LTE service available in select markets. Requires active connected vehicle services and a data plan to access the vehicle's built-in Wi-Fi Hotspot. Accessory Power must be active to use the Wi-Fi Hotspot. Data plans provided by AT&T or its local service provider. Credit card is required for purchase. <sup>8</sup> Limitations apply. Not transferable. Standard connectivity available to original purchaser for 10 years from the trial activation date for properly equipped vehicles. Visit [onstar.ca](http://onstar.ca) for details and further plan limitations. Connected Access does not include emergency or security services. Availability of Connected Access and any of its services is dependent on compatible 4G LTE wireless networks and is also subject to change. <sup>9</sup> Capabilities vary by model and/or vehicle configuration and service plan. Visit [onstar.ca](http://onstar.ca) for vehicle availability. Message and data rates may apply. Requires active service, email address on file and enrollment in Vehicle Diagnostics. Not all issues will deliver alerts. On-Demand Diagnostics requires a paid service plan.

## SPECIFICATIONS (CONTINUED)

● STANDARD ○ AVAILABLE – NOT AVAILABLE

### PACKAGES AND SPECIAL EDITIONS

#### LT Convenience Package

Includes Keyless Open and Start, two spare keys, power 6-way driver seat adjuster with power 2-way lumbar control, leather-wrapped 3-spoke steering wheel and Deluxe Cloth/Leatherette seating surfaces

#### True North Edition

Includes Side Blind Zone Alert<sup>1</sup>, Rear Cross Traffic Alert<sup>1</sup>, Rear Park Assist<sup>1</sup>, power sunroof, 7-speaker Bose premium audio system with Richbass subwoofer, Keyless Open and Start, two spare keys, power 6-way driver seat adjuster with power 2-way lumbar control, leather-wrapped 3-spoke steering wheel and Deluxe Cloth/Leatherette seating surfaces

#### Redline Edition

Includes 18" Black-finish aluminum wheels with Red accents (REN), P215/55R18 all-season<sup>1</sup> tires, Black Chevrolet bowtie emblems, Black grille with Black surround, Black mirror caps, Black beltline mouldings and Black Trax badge with Red outline (requires available LT Convenience Package and Jet Black interior; available with Silver Ice Metallic, Summit White or Mosaic Black Metallic exterior colours)

LS  
LT  
PREMIER

## DIMENSIONS



### EXTERIOR, mm (in.)

Wheelbase	2555 (100.6)
Length	4257 (167.6)
Width	1775 (69.9)
Height – LS FWD	1648 (64.9)
– LS AWD	1656 (65.2)
– LT FWD	1676 (66.0)
– LT AWD	1684 (66.3)
– Premier	1689 (66.5)
Front Track	1540 (60.6)
Rear Track	1540 (60.6)

### INTERIOR, mm (in.) front/rear

Headroom	1006/986 (39.6/38.8)
Legroom	1036/907 (40.8/35.7)
Shoulder Room	1374/1341 (54.1/52.8)
Hip Room	1313/1288 (51.7/50.7)

### CAPACITIES


Max. Cargo Area, L (cu. ft.) <sup>2</sup>	
– Rear Seats in Position	530 (18.7)
– Rear Seats Folded	1371 (48.4)
Fuel Tank, L (imp. gal.), all models	53 (11.7)

### CURB WEIGHT, kg (lb.)

– LS FWD	1363 (3005)
– LT AWD	1476 (3254)

### ESTIMATED FUEL CONSUMPTION RATINGS, L/100 km (mpg)<sup>3</sup>

	CITY	HIGHWAY
– FWD	9.1 (31)	7.6 (37)
– AWD	10.0 (28)	8.0 (35)

<sup>1</sup> Read the vehicle Owner's Manual for important feature limitations and information. <sup>2</sup> Cargo and load capacity limited by weight and distribution. <sup>3</sup> Fuel consumption estimates based on GM testing in accordance with Government of Canada approved test methods. Refer to [vehicles.nrcan.gc.ca](http://vehicles.nrcan.gc.ca) for details. Your actual fuel consumption will vary. † All-season tires may not satisfy winter tire requirements in all regions of the country. Tires specifically designed for severe winter conditions and marked with the "winter tire" symbol  may be required during certain months or in certain regions. Contact your Provincial, Municipal or local road authority for information regarding which tires are required in your particular area.





Experience Chevrolet Complete Care, a comprehensive package of owner benefits that are included with every new 2020 Chevrolet Trax leased or purchased in Canada.

**Chevrolet Complete Care coverage includes:**

2-year/24,000 km<sup>1</sup> 2 Complimentary Lube-Oil-Filter Program.<sup>2</sup>

3-year/60,000 km<sup>1</sup> Base Warranty Coverage.<sup>3</sup>

5-year/100,000 km<sup>1</sup> Powertrain Component Warranty Coverage.<sup>3</sup>

5-year/100,000 km<sup>1</sup> Courtesy Transportation.<sup>4</sup>

5-year/100,000 km<sup>1</sup> 24/7 Roadside Assistance.<sup>4</sup>

6-year/160,000 km<sup>1</sup> Sheet Metal rust-through perforation coverage.<sup>3</sup>

1-month trial of Chevrolet Connected Services and 1 month of OnStar Safety & Security coverage.<sup>5</sup>

Chevrolet Connected Access<sup>6</sup> includes 10 years of standard connectivity and enables services such as Vehicle Diagnostics<sup>7</sup> and Dealer Maintenance Notification.<sup>7</sup>

**Other ownership privileges and programs:<sup>8</sup>**

- Chevrolet Protection Plan — the only extended service plan backed by the resources and commitment of General Motors. The Chevrolet Protection Plan may be purchased at the time of vehicle sale or subsequently during the Base Warranty Coverage period.<sup>9</sup>
- Chevrolet Owner Centre — Everything you need to know. Anything you need to do. Your Chevrolet Owner Centre makes it easy. Create your account today to get the most out of your new vehicle. Get special alerts and offers, schedule service, review your maintenance schedule, and view how-to videos specifically for your vehicle. All online, anytime. Visit the Owner Centre today to register or take a tour. Find out more at [mychevrolet.ca](http://mychevrolet.ca).
- Discount Programs — save on your next vehicle. Students or recent graduates,<sup>8</sup> people with disabilities<sup>8</sup> and military personnel<sup>8</sup> you may be eligible<sup>10</sup> for a discount on select new Chevrolet vehicles leased or purchased. Combine your discount with great retail offers for an exceptional value. For full details on all programs offered in Canada, visit [programs.gm.ca](http://programs.gm.ca).
- GM Card<sup>®</sup> — Cardholders may redeem Earnings towards the total purchase price or lease down payment of an eligible new Chevrolet car, truck or crossover. Restrictions and limitations apply. For full program details, visit [gmcad.ca](http://gmcad.ca).

**Chevrolet ownership experience.** Chevrolet is committed to enhancing the vehicle shopping and ownership experience through a wide array of programs. Visit [chevrolet.ca](http://chevrolet.ca) to build and price, find a vehicle, request a quote, compare vehicles, find financial tools or track your vehicle order. You'll also find information about 24-hour Roadside Assistance, Courtesy Transportation, Customer Assistance, GM Mobility, safety and current incentives.

**Important words about this brochure.** Some of the equipment shown or described throughout this brochure may be available at extra cost. We have tried to make this brochure comprehensive and factual. We reserve the right, however, to make changes at any time, without notice, in prices, colours, materials, equipment, specifications, models and availability. Specifications, dimensions,

measurements, ratings and other numbers in this brochure and other printed materials provided at the dealership or affixed to vehicles are approximates based on design and engineering drawings, prototypes and laboratory tests. Your vehicle may differ due to variations in manufacture and equipment. Since some information may have been updated since the time of printing, please check with your Chevrolet dealer for complete details. General Motors of Canada Company reserves the right to lengthen or shorten the model year for any product, for any reason, or to start and end model years at different times. Certain vehicle features may lose their usefulness over time due to obsolescence from technological changes. Unless otherwise noted, all claims based on the GM Small SUV segment and the latest available competitive information. Excludes other GM vehicles.

**Engines.** Chevrolet products are equipped with engines produced by GM Global Propulsion Systems or other suppliers to GM worldwide. The engines in Chevrolet products may also be used in other GM makes and models.

**Assembly.** Chevrolet vehicles and their components are assembled or produced by different operating units of General Motors, its subsidiaries or suppliers to GM worldwide. We sometimes find it necessary to produce Chevrolet vehicles with different or differently sourced components than originally scheduled. Since some options may be unavailable when your vehicle is assembled, we suggest you verify that your vehicle includes the equipment you ordered and that, if there were changes, they are acceptable to you.

**Fleet orders.** Some standard content and owner benefits may be modified or deleted on fleet orders. See dealer for details.

**An important note about alterations and warranties.** Installations or alterations to the original equipment vehicle (or chassis) as distributed by General Motors are not covered by the New Vehicle Limited Warranty. The special body company, assembler, equipment installer or upfitter is solely responsible for warranties on the body or equipment and any alterations (or any effect of the alterations) to any of the parts, components, systems or assemblies installed by GM. General Motors is not responsible for the safety or quality of design features, materials or workmanship of any alterations by such suppliers.

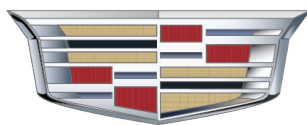
**Trademarks.** The marks appearing in this brochure including, but not limited to, General Motors, GM, Chevrolet, the Chevrolet emblem, Trax and their respective logos, emblems, slogans and vehicle model names and body designs; and other marks such as ECOTEC, Find New Roads, myChevrolet, OnStar, the OnStar emblem and StabiliTrak are trademarks of General Motors LLC, OnStar LLC and/or General Motors of Canada Company, its subsidiaries, affiliates or licensors. Apple, Apple CarPlay and iPhone are trademarks of Apple Inc., registered in the U.S. and other countries. Bluetooth is a registered trademark of Bluetooth SIG, Inc. Bose and Richbass are registered trademarks of the Bose Corporation. Facebook is a registered trademark of Facebook, Inc. © 2019 Sirius XM Canada Inc. "SiriusXM," the SiriusXM logo, channel names and logos are registered trademarks of Sirius XM Radio Inc. and are used under license. All rights reserved. Twitter is a trademark of Twitter, Inc. YouTube is a registered trademark and Android and Android Auto are trademarks of Google LLC. Wi-Fi is a registered trademark of Wi-Fi Alliance.

©Copyright 2019 General Motors of Canada Company. All rights reserved. All text, images, graphics, and other materials in this brochure are subject to the copyright and other intellectual property rights of General Motors LLC and/or General Motors of Canada Company. These materials may not be reproduced, distributed or modified without the express written permission of General Motors LLC and/or General Motors of Canada Company. September 2019.



<sup>1</sup> Whichever comes first. <sup>2</sup> Limit of two (2) Lube-Oil-Filter services during the program period. Fluid top-offs, inspections, tire rotations, wheel alignments and balancing, etc., are not covered. Additional conditions and limitations apply. See participating dealer for details. <sup>3</sup> Conditions and limitations apply. See Warranty Booklet for details. <sup>4</sup> Conditions and limitations apply. See Owner's Manual for details. <sup>5</sup> Properly equipped Chevrolet vehicles are eligible for 1 month of Connected Services trial and OnStar Safety & Security Plan coverage, starting at trial activation date; includes emergency and navigation services, the Remote Access Plan, plus a 3 GB or 1-month (whichever comes first) data plan trial. Services subject to user terms and limitations, and capabilities vary by model and/or vehicle configuration; visit [onstar.ca](http://onstar.ca) for details. Data plans offered by AT&T or its local service provider. Availability subject to change. GM Canada may modify, extend or terminate offers for any reason, in whole or in part, at any time, without notice. Requires vehicle electrical system (including battery), wireless service and GPS satellite signal to be available and operating for features to function properly. <sup>6</sup> Limitations apply. Not transferable. Standard connectivity available to original purchaser for 10 years from the trial activation date for properly equipped vehicles. Visit [onstar.ca](http://onstar.ca) for details and further plan limitations. Connected Access does not include emergency or security services. Availability of Connected Access and any of its services is dependent on compatible 4G LTE wireless networks and is also subject to change. <sup>7</sup> Capabilities vary by model and/or vehicle configuration and service plan. Visit [onstar.ca](http://onstar.ca) for vehicle availability. Message and data rates may apply. Requires active service, email address on file and enrollment in Vehicle Diagnostics. Not all issues will deliver alerts. On-Demand Diagnostics requires a paid service plan. <sup>8</sup> Conditions and limitations apply. <sup>9</sup> Please work with your dealer to select the plan that is suitable for your driving needs. Dealers are free to set their own prices. <sup>10</sup> Subject to eligibility.

# MURRAY



*Cadillac*

**403.527.1141**

**WWW.MURRAYCHEV.CA**

**1270 TRANS CANADA WAY SE  
MEDICINE HAT, AB - T1B 1J5**