

THE 2021
CT5

A CLOSER **LOOK**



Cadillac



DESIGN THAT IS DRIVEN BY THE FUTURE



Optional features shown throughout

PERFORMANCE STANCE

Corners carved. The bold stance of the CT5 helps you feel firmly planted on the road.



SIGNATURE LIGHTING

Always iconic, the LED Signature Lighting and headlamps continue to light the way.



ALLOY WHEELS

Optimally designed, the alloy wheels harmonize form and function, aesthetics and engineering.



THOUGHTFUL DESIGN.
PREMIUM EXECUTION.

Expressively styled and boldly designed, each model is uniquely characterized to be an extension of you.



US model shown

THOUGHTFUL DESIGN

There's no devil in these details. Only a thoughtful console layout designed to keep your focus on the road.



RIDE COMFORT

No matter what speed you're going, feel secure in seats designed from the road up.



PREMIUM MATERIALS

Delightfully handcrafted with premium materials, every detail has been thoughtfully obsessed over—for you.



RESPONSIVE POWER, EFFICIENTLY DELIVERED

CT5 delivers enthusiasts the refined ride and advanced technology they expect from Cadillac. At the centre of it all are the elegant 2.0L Twin-Scroll Turbo engine and the available 3.0L Twin Turbo V6 engine. Both make CT5 indisputably fun to drive.



TWO POWERFUL ENGINE CHOICES

A powerful 2.0L Twin-Scroll Turbo engine is standard on Luxury, Premium Luxury and Sport trims. For even higher performance, a 3.0L Twin Turbo V6 engine is also available, which can produce 335 horsepower and 405 lb-ft of torque on Premium Luxury and 360 horsepower and 405 lb-ft of torque on V-Series.



10-SPEED TRANSMISSION

Control power with an advanced 10-speed automatic transmission that packs unsurpassed speed in its segment.



AERODYNAMIC DESIGN

The science, engineering and execution of vehicle aerodynamics touch the worlds of design and functionality. Finding the optimal solution among these disciplines is one of the greatest challenges in the automotive sphere.



FEATURING

CT5-V: BEAUTY AND BEAST



BREMBO®¹ FRONT BRAKES IN THREE CALIPER COLOURS

The three available caliper colours are applied to the front-brake components on the V-Series, creating a visual one-two punch of appearance and personalization.



¹Brembo is a registered trademark of FRENIBREMBO S.P.A.

ELECTRONIC LIMITED-SLIP REAR DIFFERENTIAL

The CT5-V includes an electronic Limited-Slip Rear Differential that automatically directs torque to the rear wheel with the most traction for greater control during cornering and spirited maneuvers. This electronic system is extremely precise and optimized across the spectrum of driving conditions.



QUAD TRAPEZOID EXHAUST TIPS

The quad exhaust tips complement the 3.0L Twin Turbo V6 high-output engine that is standard on V-Series. The exhaust tips are exquisitely crafted and include subtle knurled pattern details inside the tips, exemplifying Cadillac's attention to every detail.



STATE-OF-THE-ART TECHNOLOGY

GO HANDS-FREE WITH SUPER CRUISE™¹

The future of driving is here. The 2021 CT5 offers available Super Cruise™, the first truly hands-free driver-assistance feature for divided and compatible highways. Super Cruise on CT5 offers several new enhancements, including Lane-Change-on-Demand functionality¹. Late availability starting early 2021 calendar year.



US model shown

¹Read the vehicle Owner's Manual for important feature limitations and information.

WIRELESS PHONE CHARGING

Power up your devices inside the vehicle wirelessly¹. There is no clutter—just position a compatible device on the charging pad.



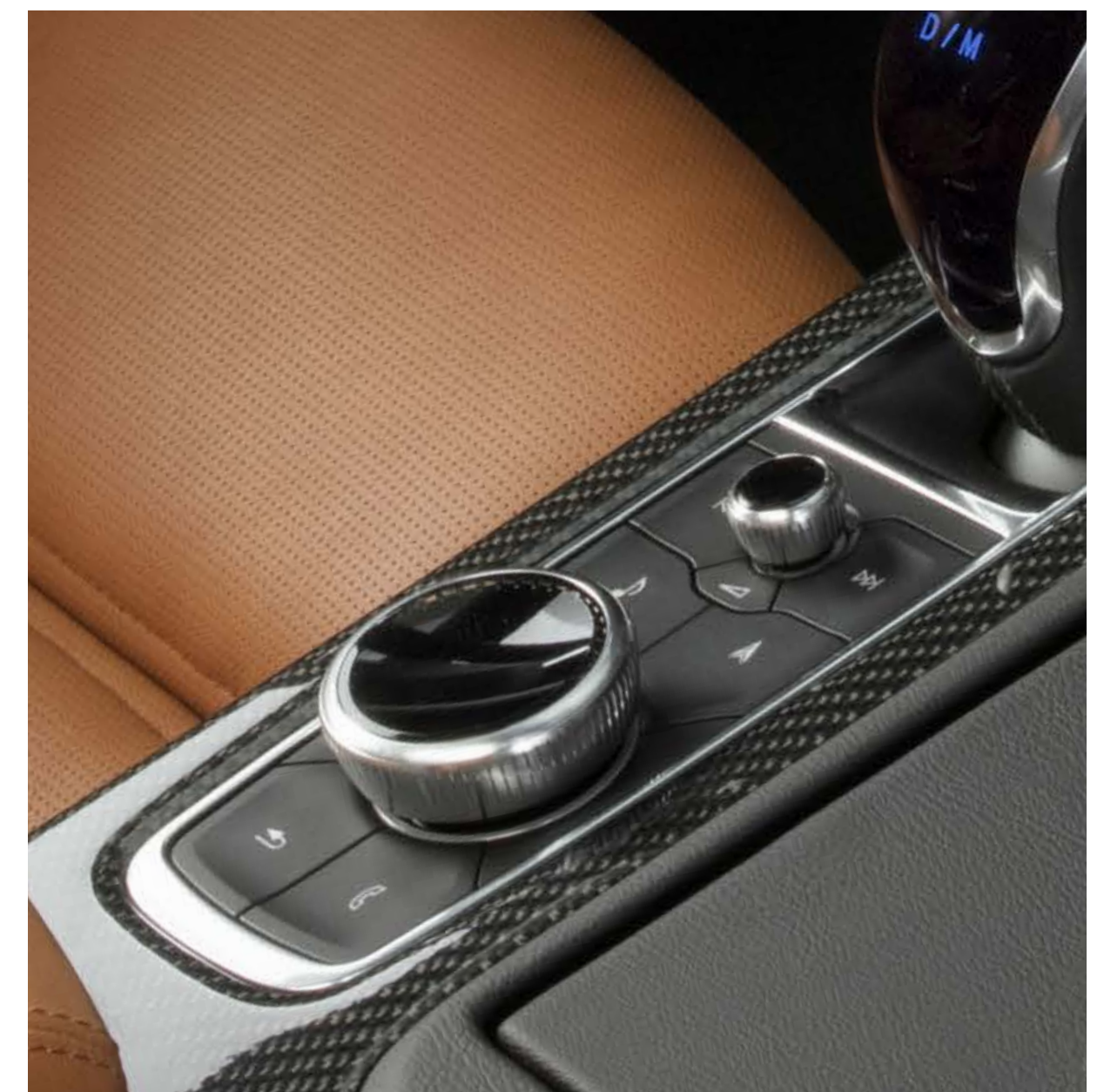
SOUND-OPTIMIZED CABIN

The CT5's interior has been designed and refined to provide a quiet environment that helps enable what the driver desires—from serenity when driving alone to comfortable-volume group conversations.



ROTARY INFOTAINMENT CONTROLLER

Positioned on the centre console, just in front of the armrest, the Rotary Infotainment Controller provides the driver with an intuitive way to interact with the infotainment system. Includes jog functionality, wireless Apple CarPlay^{®2} and wireless Android Auto^{™3} compatibility⁴.



¹The system wirelessly charges one compatible mobile device. Some phones have built-in wireless charging technology and others require a special adaptor/back cover. To check for phone or other device compatibility, see cadillactotalconnect.ca or consult your carrier. ²Vehicle user interface is a product of Apple and its terms and privacy statements apply. Requires compatible iPhone and data plan rates apply. Apple CarPlay is a trademark of Apple Inc. Siri, iPhone and iTunes are trademarks for Apple Inc, registered in the U.S. and other countries. ³Vehicle user interface is a product of Google and its terms and privacy statements apply. Requires the Android Auto app on Google Play and an Android compatible smartphone running Android[™] 5.0 Lollipop or higher. Data plan rates apply. Android Auto is a trademark of Google LLC. ⁴Functionality may vary by model. Full functionality requires compatible Bluetooth[®] and smartphone, and USB connectivity for some devices. Data plan rates may apply. Visit gmttotalconnect.ca to find out which phones are compatible with the vehicle. Bluetooth is a registered trademark of Bluetooth SIG, Inc. Visit gmttotalconnect.ca to find out which phones are compatible with the vehicle. Bluetooth is a registered trademark of Bluetooth SIG, Inc.



SELECTED AVAILABLE SAFETY AND DRIVER-ASSISTANCE FEATURES¹

- AUTOMATIC EMERGENCY BRAKING
- FRONT PEDESTRIAN BRAKING
- HD REAR VISION CAMERA
- AUTO HIGH BEAM ASSIST
- SAFETY ALERT SEAT
- REAR SEAT REMINDER²
- TEEN DRIVER
- LED HEADLAMPS
- RAINSENSE FRONT WIPERS
- LANE KEEP ASSIST WITH LANE DEPARTURE WARNING
- FOLLOWING DISTANCE INDICATOR
- FORWARD COLLISION ALERT
- FRONT AND REAR PARK ASSIST
- LED CORNERING LAMPS
- ADAPTIVE CRUISE CONTROL - ADVANCED
- ENHANCED AUTOMATIC EMERGENCY BRAKING
- REVERSE AUTOMATIC BRAKING
- LANE CHANGE ALERT WITH SIDE BLIND ZONE ALERT
- HD SURROUND VISION AND RECORDER
- REAR CROSS TRAFFIC ALERT
- HEAD-UP DISPLAY
- REAR PEDESTRIAN ALERT
- REAR CAMERA MIRROR
- AUTOMATIC SEAT BELT TIGHTENING
- BUCKLE TO DRIVE

¹Read the vehicle's owner's manual for important feature limitations and information.

²Does not detect people or items. Always check the rear seat before exiting the vehicle.

SPECS

3.0L TWIN TURBO V6 ENGINE

AVAILABLE ON PREMIUM LUXURY

- 335 HP AND 405 LB-FT OF TORQUE
- RWD: 12.3L/100KM CITY / 8.5L/100KM HWY¹
- AWD: 12.7L/100KM CITY / 9.1L/100KM HWY¹

STANDARD ON V-SERIES

- 360 HP AND 405 LB-FT OF TORQUE
- RWD: 12.7L/100KM CITY / 8.7L/100KM HWY¹
- AWD: 12.7L/100KM CITY / 9.1L/100KM HWY¹

2.0L TURBO ENGINE

STANDARD ON LUXURY, PREMIUM LUXURY AND SPORT

- 237 HP* AND 258 LB-FT TORQUE*
- RWD: 10.4L/100KM CITY / 7.3L/100KM HWY¹
- AWD: 11.0L/100KM CITY / 7.7L/100KM HWY¹

*Tested with premium gasoline



¹Fuel consumption estimates based on GM testing in accordance with Government of Canada approved test methods. Refer to [vehicles.nrcan.gc.ca](https://www.vehicles.nrcan.gc.ca) for details. Your actual fuel consumption may vary.

TRIMS

LUXURY

Luxury features:



- 2.0L Twin-Scroll Turbo engine
- 10-speed automatic transmission
- Rear-Wheel Drive (AWD available)
- 10" diagonal full-colour HD touch-screen display and Rotary Infotainment Controller
- Leatherette Seating Surfaces
- Forward Collision Alert¹ and Automatic Emergency Braking¹

PREMIUM LUXURY

Includes Luxury features, plus:



- Exclusive Premium Luxury wheels and bright accented grille
- Leather Appointed Seating
- Wireless Phone Charging²
- Lane Change Alert with Side Blind Zone Alert¹
- Available Platinum Package and 3.0L Twin Turbo V6 engine
- Available Diamond Sky Special Edition Package

SPORT

Includes Premium Luxury features, plus:



- Sport grilles, fascia, rockers and spoiler
- Thick-rim Steering Wheel
- 18-way adjustable front seats, including sport bolsters
- Leatherette Seating Surfaces
- Available Leather Appointed Seating
- Available Platinum Package
- Available V performance package

V-SERIES

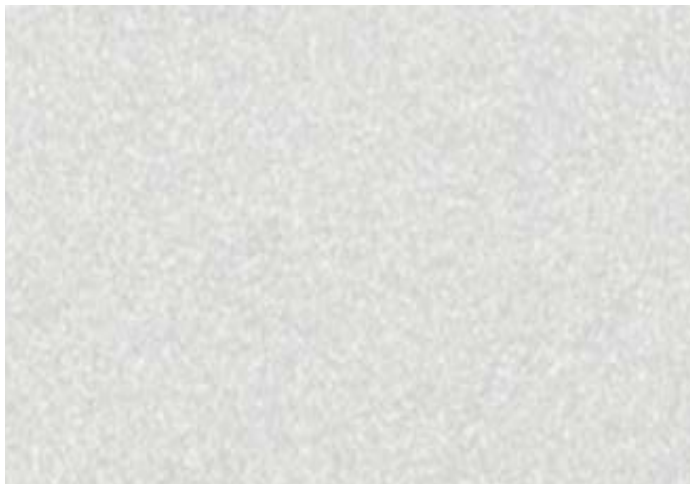
Includes Sport features, plus:



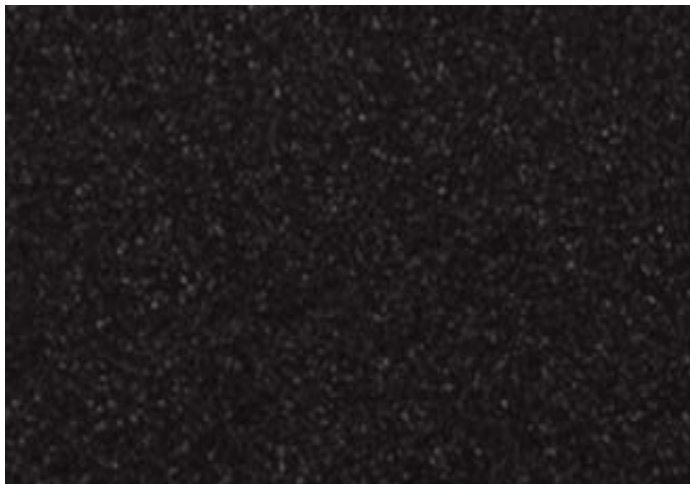
- 3.0L Twin Turbo high-output V6 engine
- Performance suspension with Magnetic Ride Control
- Electronic Limited-Slip Rear Differential
- Performance Traction Management and Launch Control
- Available Platinum Package

¹Read the vehicle Owner's Manual for important feature limitations and information. ²The system wirelessly charges one compatible mobile device. Some phones have built-in wireless charging technology and others require a special adaptor/back cover. To check for phone or other device compatibility, see cadillactotalconnect.ca or consult your carrier.

EXTERIOR COLOURS



SUMMIT WHITE



BLACK RAVEN



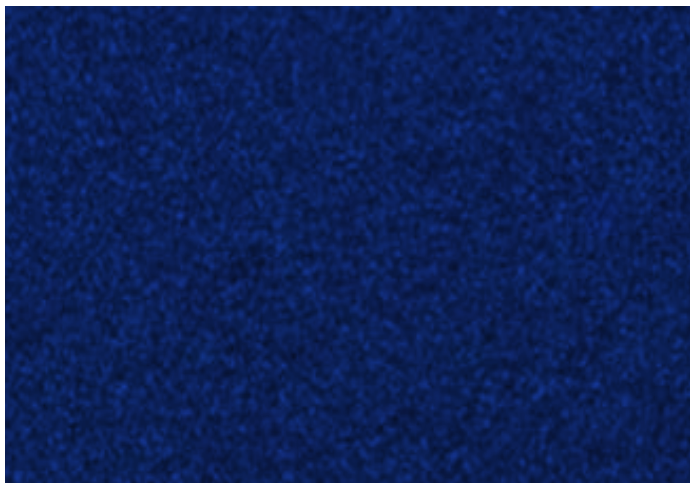
SATIN STEEL METALLIC¹



EVERGREEN METALLIC¹



SHADOW METALLIC¹



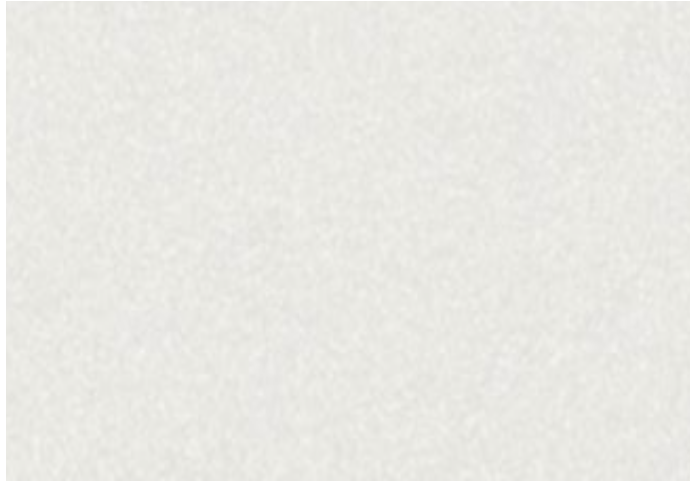
WAVE METALLIC¹



GARNET METALLIC^{1,2}



DARK MOON METALLIC^{1,2}



CRYSTAL WHITE TRICOAT^{1,3}



VELOCITY RED^{1,4}



RIFT METALLIC¹



INFRARED TINTCOAT¹



DIAMOND SKY METALLIC

Included and only available with Diamond Sky Special Edition Package. Only available on Premium Luxury.

¹Available at extra charge.
²Available on Luxury and Premium Luxury.
³Not available on V-Series.
⁴Available on Sport and V-Series.

INTERIOR COLOURS



SAHARA BEIGE WITH JET BLACK ACCENTS

Leatherette Seating Surfaces

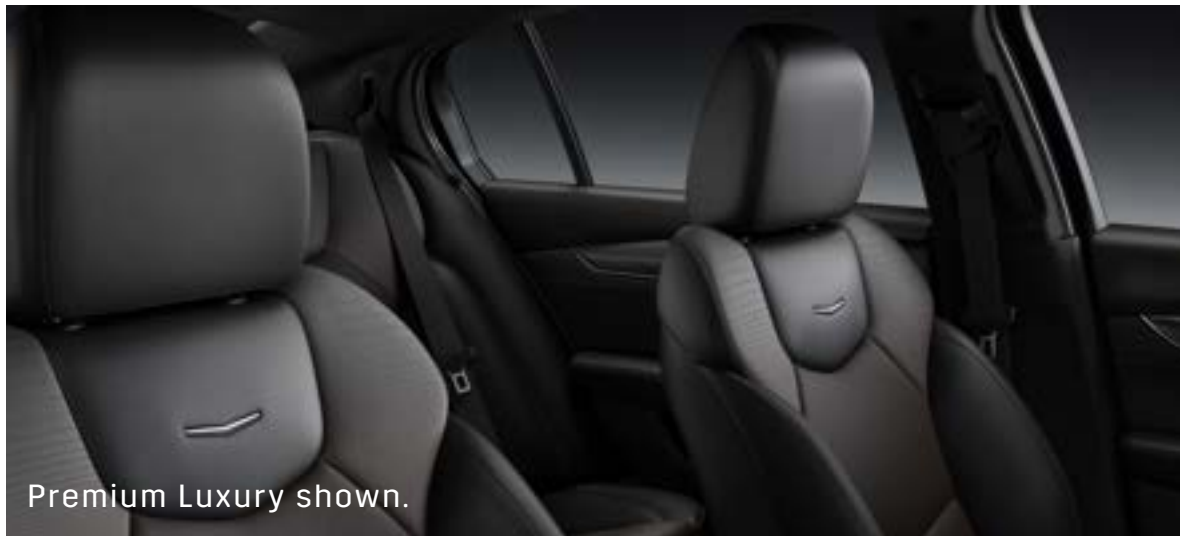
Standard on Luxury.



JET BLACK WITH JET BLACK ACCENTS

Leatherette Seating Surfaces

Standard on Luxury, Sport and V-Series.



JET BLACK WITH JET BLACK ACCENTS

Leather Appointed Seating

Available on Premium Luxury, Sport and V-Series.



SEDONA SAUVAGE WITH JET BLACK ACCENTS

Semi-Aniline Leather Appointed Seating

Available on Premium Luxury, Sport and V-Series.



SKY COOL GREY WITH JET BLACK ACCENTS

Included and only available with sky cool grey with jet black accents Special Edition Package.

Only available on Premium Luxury.

INTERIOR COLOURS



MAPLE SUGAR WITH JET BLACK ACCENTS

Leather Appointed Seating

Available on Premium Luxury.



SAHARA BEIGE WITH JET BLACK ACCENTS

Leather Appointed Seating

Available on Premium Luxury.



WHISPER BEIGE WITH JET BLACK ACCENTS

Leather Appointed Seating

Available on Sport and V-Series.

WHEELS



18" Painted alloy
with Bright Silver
finish

Standard on Luxury.



19" Premium painted
alloy with Pearl
Nickel finish

Standard on Sport and
V-Series.



18" Diamond Cut
alloy with Android
Gloss pockets

Available on Premium Luxury.



19" Diamond Cut
alloy with Midnight
Silver pockets

Available on Premium Luxury.



18" Premium
painted alloy with
Manoogian Silver
finish

Standard on Premium Luxury.



19" Premium
painted
alloy with Satin
Graphite finish

Available on Sport and
V-Series.



19" Diamond Cut
alloy with Android
Satin pockets

Available on Sport and
V-Series.



20" Polished alloy
with Dark Android
Gloss pockets

Available on all trims¹.



20" Painted alloy
with Gloss Black
finish

Available on all trims¹.



20" Alloy wheels
with polished/ dark
android gloss finish

Included and only available
with Diamond Sky Special
Edition Package. Only available
on Premium Luxury.

¹Dealer-installed accessory wheel. Use only GM-approved tire and wheel combinations.

WARRANTY

PEACE OF MIND, STANDARD WITH EVERY NEW 2021 CADILLAC CT5

Experience the Cadillac comprehensive coverage and warranty that comes standard with every new 2021 Cadillac CT5 purchased or leased in Canada. Simply, it is designed around you to make it easy to keep your Cadillac like new – and give you the confidence you deserve when you need it most.

- 4-year/80,000 KM¹ Base Warranty Coverage²
- 6-year/110,000 KM¹ Powertrain Component Warranty Coverage² (includes diesel components)
- 4-year/80,000 KM¹ sheet metal (corrosion) Warranty Coverage²
- 6-year/unlimited KM¹ sheet metal (rust through) perforation Warranty Coverage²

See warranty booklet for details <https://www.cadillaccanada.ca/en/2021warranty> and your owner's manual <https://my.gm.ca/cadillac/en/how-to-support/manuals> for information regarding your warranty benefits.

¹ Whichever comes first

² Limitations and conditions apply. See Warranty Booklet for details, and your Owner's Manual for information regarding maintaining your warranty benefits



THANK YOU FOR YOUR INTEREST IN THE
2021 CADILLAC CT5/CT5-V

YOUR SALES & LEASING CONSULTANT:

Name

Phone Number

Email

DEALERSHIP:

Dealer Name

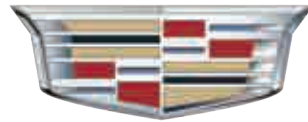
Dealer Address

Dealer Phone Number



THANK YOU FOR YOUR INTEREST IN THE
2021 CADILLAC CT5/CT5-V

MURRAY



Cadillac

403.527.1141

WWW.MURRAYCHEV.CA

**1270 TRANS CANADA WAY SE
MEDICINE HAT, AB - T1B 1J5**