

BLAZER 2021

CHEVROLET





PURSUE EVERY PASSION.

You're ready to live your best life in Blazer. Its wide stance and assertive styling, paired with a roomy, driver-centric interior, set it apart. The lineup ranges from the well-equipped LT to the sport-tuned RS to the sophisticated Premier. Performance is produced by three available engines, including the 308-horsepower V6 or a turbocharged 2.0L engine. And available advanced safety technology can provide confidence as you travel. You can see it's easy to find everyday freedom in the 2021 Chevrolet Blazer.

FIND NEW ROADS™

Blazer RS in Cherry Red Tintcoat (extra-cost color) with available features including 21-inch gloss Black-painted aluminum wheels.

MODELS

LT

Modern and muscular, Blazer LT is as elegant as it is capable.

A signature Black grille with chrome header, standard 18-inch aluminum wheels and a rounded dual-outlet exhaust ensure you're noticed both coming and going. An efficient 2.5L engine¹ is featured on 1LT, while 2LT and 3LT are powered by the standard 2.0L Turbo or an available 3.6L V6. Inside, Premium Cloth or available leather-appointed seating surfaces offer a comfortable oasis during your travels.



RS

The street-inspired RS introduces itself to the world with sleek, muscular style.

A custom Black mesh grille with a unique hexagonal design, Black Ice Chrome header and Black bowtie emblem start the sporty theme. The standard 308-horsepower 3.6L engine provides the performance, and a rectangular dual-outlet exhaust and 20-inch machined-face aluminum wheels or available 21-inch gloss Black-painted aluminum wheels (shown) keep things going. An RS-exclusive Red-accented interior is highlighted by perforated leather-appointed seating surfaces and heated front seats.



¹ EPA-estimated 21 MPG city/27 highway.

MODELS

PREMIER

Premier adds sophistication to any situation.

A signature bright chrome-accented grille with chrome header, Silver-painted roof rails and chrome-accented door handles elevate the exterior appearance. 20-inch aluminum wheels or available 21-inch Pearl Nickel-painted aluminum wheels (shown) and an integrated rectangular dual-outlet exhaust extend the upscale experience. A standard 2.0L Turbo or an available 3.6L V6 engine¹ supplies the power.

The Premier-exclusive Maple Sugar or Jet Black interior features unique leather-appointed seating surfaces with sueded microfiber inserts. Heated and ventilated front seats and heated rear outboard seats are only the beginning of the luxurious touches you'll find inside.



¹ Some Premier models will have been produced with the 3.6L V6 engine as standard equipment at start of production.

EXTERIOR DESIGN



Blazer RS in Cherry Red Tintcoat (extra-cost color) with available features including 21-inch gloss Black-painted aluminum wheels.



BOLD AND BEAUTIFUL.

Blazer stands out from other SUVs with a bold look and powerful presence, boasting a muscular profile and **aggressive design appeal** that draws on the Chevrolet performance heritage.

Ultra-thin LED daytime running lamps above the headlamps provide an eye-catching look any time of day. High-intensity discharge (HID) headlamps offer crisp, bright illumination.

LED taillamps wrap around the liftgate and bodysides, producing a high-tech appearance.

You'll find a variety of stylish wheels are available, including the optional 21-inch gloss Black-painted aluminum wheels shown here on RS.

A dual-outlet exhaust is standard: Blazer L and LT feature round outlets, RS showcases rectangular outlets and Premier has outlets that are integrated through the fascia.



INTERIOR DESIGN

INDULGE IN THE FINER THINGS.

Blazer Premier interior in Maple Sugar with available features.

In every Blazer, intuitive **driver-focused controls**, switches and features are within easy reach. Camaro-inspired air outlets utilize rotating dials for quick, intuitive climate control.

Premier features perforated **leather-appointed seating surfaces** with sueded

microfiber inserts. Chrome touches and bright front sill plates add an air of sophistication as you enter and exit.

Heated front seats provide a warm embrace in 3LT, RS and Premier. The comfort level is raised even higher on Premier with standard ventilated

front seats and heated rear outboard seats, features that are available on RS.

Whenever the vehicle is on and it is cold outside, an automatic **heated steering wheel** senses the interior temperature and cycles on or off as necessary for

hands-on comfort. Standard on RS and Premier.

A **Bose premium 8-speaker audio system** brings high-quality sound wherever you travel. Standard on Premier; available on 3LT and RS.

A photograph showing the interior of a Blazer RS. The seats are black leather with red stitching. The dashboard and center console are black with red accents. The steering wheel is black with red stitching. The car is parked in a lot with trees in the background.

INTERIOR DESIGN

IT PUTS THE “SPORT” IN SPORT UTILITY.

¹ Does not detect people or items. Always check rear seat before exiting.

Blazer RS interior in Jet Black with Red accents and available features.

A **Jet Black interior** with perforated leather-appointed seating surfaces is your home on the road in RS. Perforations in the seat cushions reveal Red accents. The theme continues with Red piping on the seats and Red-tinted chrome accents.

The **second-row seats slide up to 5.5 inches forward or rearward** to provide more passenger room or

additional cargo space. Each rear seat reclines for added comfort or folds flat to create room for longer, larger items.

“Quiet” is the word of the day in Blazer. **Active Noise Cancellation** uses sound waves to help counteract unwanted engine noise. Combined with a honed exterior that helps reduce wind noise and numerous other acoustic enhancements, the Blazer interior

is a quiet place for a conversation, whether you’re using the hands-free phone function or talking to people in the second row.

True White ambient light pipes on the passenger side and below the front door handles combine with LED lighting in the center console to provide functional sophistication. Standard on RS and Premier.

Rear Seat Reminder¹ provides alerts to double-check for valuable items left behind. It activates when the rear doors are opened and closed up to 10 minutes before or anytime while your vehicle is on, so when you turn off the vehicle under certain conditions, a chime sounds and a message appears in the Driver Information Center.

PERFORMANCE

Blazer RS in Cherry Red Tintcoat (extra-cost color) with available features including 21-inch gloss Black-painted aluminum wheels.



POWER FOR EVERY PERSONALITY.

Choose from a trio of available dynamic engines, each paired with a smooth-shifting, efficient 9-speed automatic transmission:

- A 3.6L V6 engine, standard on RS and available on 2LT, 3LT and Premier,¹ generates 308 horsepower and 270 lb.-ft. of torque, with an EPA-estimated 20 MPG city/27 highway. With available trailering equipment, this engine can tow up to 4,500 lbs.²
- A 2.0L Turbo, standard on 2LT, 3LT and Premier,¹ creates 227 horsepower and 258 lb.-ft. of torque, with an EPA-estimated 22 MPG city/29 highway.
- A 2.5L engine, standard on L and 1LT, offers 193 horsepower and 188 lb.-ft. of torque, with an EPA-estimated 21 MPG city/27 highway.

¹ Some Premier models will have been produced with the 3.6L V6 engine as standard equipment at start of production. ² Before you buy a vehicle or use it for trailering, carefully review the Trailering section of the Owner's Manual. The weight of passengers, cargo and options or accessories may reduce the amount you can tow.

PERFORMANCE

Blazer Premier in Silver Ice Metallic with available features including 21-inch aluminum wheels.



FOLLOW THE ROAD TO ADVENTURE.

You can adjust performance based on road and surface conditions with the simple turn of the Driver Mode Selector dial. Up to five modes are available: TOUR is for everyday driving and powers the front wheels only on all-wheel-drive (AWD) vehicles to improve fuel efficiency;¹ AWD (all-wheel-drive models) or SNOW/ICE (front-wheel-drive models) helps offer better control when snow and

ice make road conditions slippery; SPORT increases steering effort for more road feel and modifies the transmission shifting for more available power; OFF-ROAD (AWD models) distributes torque in an optimal manner to all four wheels for improved performance on gravel or loose dirt; TOW/HAUL (3.6L-equipped models with available trailering equipment) modifies the transmission shifting to

provide more torque from the engine to pull the extra weight added by a trailer.

RS features an available Advanced Twin-Clutch All-Wheel Drive system that can deliver torque independently to either rear wheel. This optimizes traction on slippery roads and improves sporty dry-road-handling performance.

When the windshield wipers are activated, the standard Auto-Dry Brakes feature automatically positions the brake pads closer to the rotors to sweep away moisture and help improve brake performance. Every Blazer also has front and rear disc brakes with large Duralife® rotors and 4-channel antilock brakes.

¹ EPA-estimated MPG city/highway: 21/27 (2.5L FWD), 22/29 (2.0L FWD), 22/27 (2.0L AWD), 20/27 (3.6L FWD), 19/26 (3.6L AWD).

CARGO MANAGEMENT



Blazer Premier in Silver Ice Metallic with available features.

Blazer features a versatile, flexible system that helps make cargo management, and carrying passengers, a beautifully simple endeavor.

Loading Blazer is a breeze with an available power liftgate that provides access to **64.2 cubic feet of maximum cargo space!** That's enough room for multiple loaded full-size golf bags to fit horizontally.

You'll find two-tier **storage solutions** in the front doors as well as bins under the armrest and around the interior. In the cargo area, push hooks help secure grocery bags, and there's a hidden space beneath the floor.

An available **floor-mounted rail system** with an adjustable cargo fence helps secure gear when traveling. Standard on Premier. Available on RS.

¹ With the rear seats folded down. Cargo and load capacity limited by weight and distribution.

Hands-free gesture power liftgate standard on RS and Premier.

Power liftgate standard on 3LT, RS and Premier; available on 1LT and 2LT.

Electronic locking glove box.

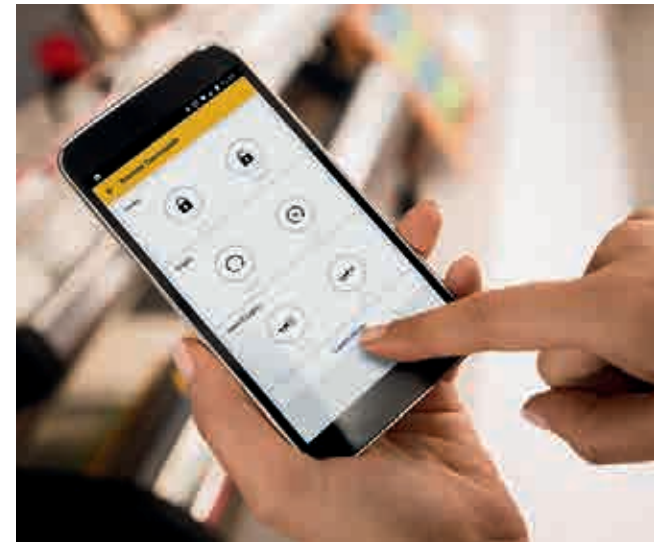


TECHNOLOGY

Wireless Apple CarPlay^{®1} compatibility for your iPhone[®] (shown) and wireless Android Auto^{™2} compatibility.

Available 8-inch diagonal customizable Driver Information Center.

Available myChevrolet Mobile App³ includes remote vehicle start if properly equipped (requires paid plan).



¹ Vehicle user interface is a product of Apple and its terms and privacy statements apply. Requires compatible iPhone and data plan rates apply. ² Vehicle user interface is a product of Google and its terms and privacy statements apply. Requires the Android Auto app on Google Play and a compatible Android smartphone. Data plan rates apply. You can check which smartphones are compatible at g.co/androidauto/requirements. ³ Available on select Apple and Android devices. Service availability, features and functionality vary by vehicle, device and the plan you are enrolled in. User terms apply. Device data connection required. Visit onstar.com for details and limitations.

Apple CarPlay is a trademark of Apple Inc. Siri, iPhone and Apple Music are trademarks of Apple Inc., registered in the U.S. and other countries. Android and Android Auto are trademarks of Google LLC.



YOUR CONNECTIONS ARE JUST A TOUCH AWAY.

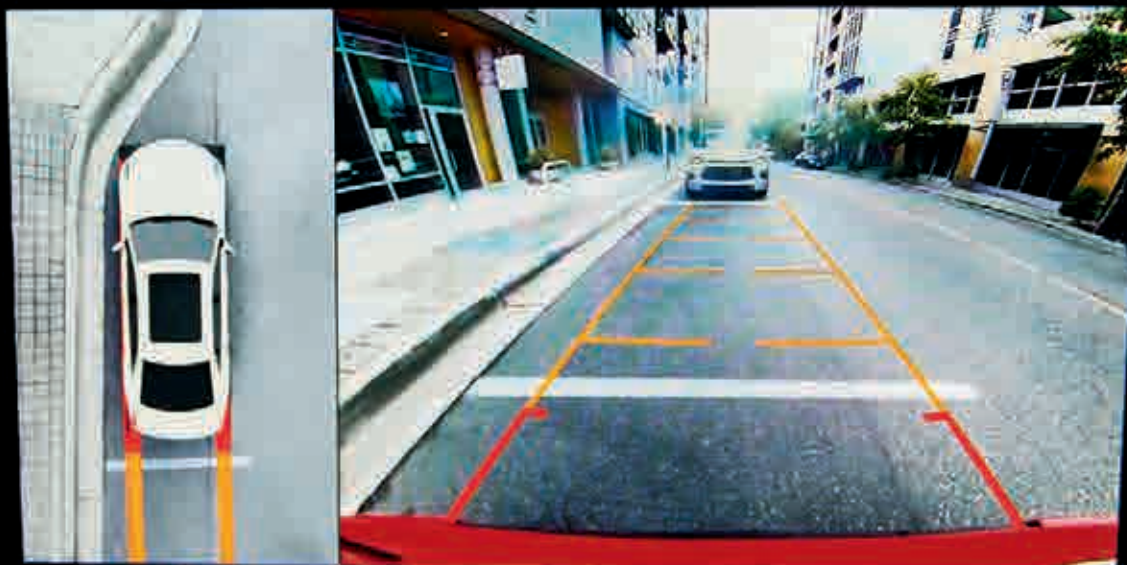
- The Chevrolet Infotainment 3 System¹ is intuitive and easy to use, with an 8-inch diagonal color touch-screen display that is standard on every Blazer.
- Available 4G LTE Wi-Fi[®] Hotspot² provides a fast and reliable connection for up to seven devices.
- With available Alexa Built-In³ you can use voice commands to stream your favorite music, get directions, make calls, change your radio station and more – on the go.
- Available Hitch Guidance⁴ uses overlays from the available Rear Vision Camera⁴ to help you align your Blazer with a trailer.

¹ Chevrolet Infotainment System functionality varies by model. Full functionality requires compatible Bluetooth and smartphone, and USB connectivity for some devices. ² Service varies with conditions and location. Requires active service and paid AT&T data plan. Visit onstar.com for details and limitations. ³ Functionality is subject to limitations and varies by vehicle, infotainment system and location. Select service plan required. Certain Alexa Skills require account linking to use. Visit onstar.com for additional details. ⁴ Safety or driver assistance features are no substitute for the driver's responsibility to operate the vehicle in a safe manner. The driver should remain attentive to traffic, surroundings and road conditions at all times. Visibility, weather and road conditions may affect feature performance. Read the vehicle Owner's Manual for more important feature limitations and information.

SAFETY AND DRIVER ASSISTANCE

HD SURROUND VISION.

- HD Surround Vision¹ uses multiple cameras to display a digital overhead image of the area around your vehicle on the infotainment display.
- Can help you park and avoid nearby objects at low speeds.
- Additional views can be selected on the camera display.
- Available on 3LT, RS and Premier.



¹ Safety or driver assistance features are no substitute for the driver's responsibility to operate the vehicle in a safe manner. The driver should remain attentive to traffic, surroundings and road conditions at all times. Visibility, weather and road conditions may affect feature performance. Read the vehicle Owner's Manual for more important feature limitations and information.

Safety cage made with significant amounts of high-strength and ultra-high-strength steel.

Available Rear Camera Mirror!

Teen Driver technology.



¹ Safety or driver assistance features are no substitute for the driver's responsibility to operate the vehicle in a safe manner. The driver should remain attentive to traffic, surroundings and road conditions at all times. Visibility, weather and road conditions may affect feature performance. Read the vehicle Owner's Manual for more important feature limitations and information.

SAFETY IS ALWAYS IN STYLE.



Adaptive Cruise Control. While you steer, this feature can automatically maintain a driver-selected gap time from the detected vehicle you're following. Available on RS and Premier.



Front Pedestrian Braking. At speeds below 50 mph, this feature can help you avoid or reduce the severity of a front-end collision with a pedestrian it detects directly in front of you. It provides pedestrian alerts and can even automatically provide hard emergency braking or enhance the driver's hard braking. Limited nighttime and low-visibility performance. Standard on 2LT, 3LT, RS and Premier.



Automatic Emergency Braking. At speeds below 50 mph, this feature works with Forward Collision Alert to help you avoid or reduce the severity of a front-end collision with a detected vehicle you're following by automatically providing hard emergency braking or enhancing the driver's hard braking. Standard on 2LT, 3LT, RS and Premier.



Forward Collision Alert. Can warn you if it detects a potential front-end collision with a vehicle you're following. It can also provide a tailgating alert if you're following much too closely. Standard on 2LT, 3LT, RS and Premier.



Following Distance Indicator. This feature can display the gap time in seconds between your vehicle and a detected vehicle you're following. Standard on 2LT, 3LT, RS and Premier.



Lane Keep Assist with Lane Departure Warning. Uses a brief, gentle steering wheel turn to alert you when you may be unintentionally drifting out of detected lane lines, so you can steer to stay safely in your lane. If needed, you may receive additional Lane Departure Warning alerts. System alerts do not occur if you are using your turn signal or it detects that you may be intentionally leaving your lane. Standard on 2LT, 3LT, RS and Premier.



Lane Change Alert with Side Blind Zone Alert. This feature can provide side mirror visual alerts when a detected moving vehicle is quickly approaching or is in your side blind zone. Standard on 3LT, RS and Premier. Available on 1LT and 2LT.



Rear Cross Traffic Alert. This feature can warn you of detected left or right cross traffic behind your Blazer when in Reverse. Standard on 3LT, RS and Premier. Available on 1LT and 2LT.



Rear Vision Camera. This feature provides an image of the area directly behind your vehicle when traveling in Reverse at low speeds. Standard on all models.



Rear Park Assist. Can provide distance alerts to nearby detected objects behind your vehicle to help you park and avoid collisions when traveling in Reverse at low speeds. Standard on 3LT, RS and Premier. Available on 1LT and 2LT.



StabiliTrak® Electronic Stability Control. This standard system detects the difference between the path being steered and the direction the vehicle is actually traveling. It then uses the brakes and, if necessary, adjusts propulsion torque to help you keep your Blazer on track.



Safety Alert Seat. Safety Alert Seat uses driver-seat vibration pulses on the left, right or both sides to help you identify the direction of potential crashes so you can quickly take action. You can also switch to beeping crash avoidance alerts. Available on RS and Premier.



IntelliBeam®. Can automatically turn the vehicle's high beam headlamps on and off according to surrounding traffic conditions. Standard on 2LT, 3LT, RS and Premier.

Available features shown.



Safety starts with you. Safety or driver assistance features are no substitute for the driver's responsibility to operate the vehicle in a safe manner. The driver should remain attentive to traffic, surroundings and road conditions at all times. Visibility, weather and road conditions may affect feature performance. Read the vehicle Owner's Manual for more important feature limitations and information.

EXTERIOR COLORS



Summit White^{1,2}



Iridescent Pearl Tricoat^{3,4}



Silver Ice Metallic



Pewter Metallic³



Iron Gray Metallic³



Red Hot^{2,3}



Cherry Red Tintcoat^{3,4}



Cayenne Orange Metallic^{3,4}



Bright Blue Metallic^{4,5}



Midnight Blue Metallic³



Black

¹ Not available on RS. ² Not available on Premier. ³ Not available on L. ⁴ Extra-cost color. ⁵ Available only on RS.

MODELS



Jet Black Premium Cloth



18" Bright Silver-Painted Aluminum Wheels
Standard on L

L Blazer L includes these features:

MECHANICAL

Brakes – 4-wheel antilock, 4-wheel disc with Duralife rotors; electronic parking brake

Engine – 2.5L DOHC 4-cylinder with Variable Valve Timing (VVT), Direct Injection and stop/start technology

Exhaust – dual-outlet with bright circular tips

Hill Start Assist

StabiliTrak – Electronic Stability Control System with Traction Control

Transmission – 9-speed automatic, electronically controlled with overdrive and Driver Shift Control

EXTERIOR

Active aero shutters

Daytime running lamps – LED

Door handles – body-color

Fuel filler – capless fueling

Grille – signature Black grille with bright chrome header bar

Headlamps – high-intensity discharge (HID), bi-functional, automatic on/off with automatic delay

Liftgate – manual

Mirrors – heated, power-adjustable, manual-folding with body-color caps

Moldings – Black lower bodyside

Taillamps – LED

Wipers – front variable-speed, intermittent with washers; rear intermittent with washer

MODELS (CONTINUED)

L (CONTINUED) Blazer L includes these features:

INTERIOR

Active Noise Cancellation

Air conditioning – automatic, dual-zone with individual climate settings for driver and front passenger; rear console air vents

Audio – 6-speaker system

Cruise control – electronic with Set and Resume Speed

Cup holders – two in front center console, two in rear center armrest and a bottle holder in each door

Door locks – power programmable with lockout protection and manual rear door child security

Driver Information Center – 4.2-inch diagonal multi-color display with digital compass

Entertainment – Chevrolet Infotainment 3 system¹ with 8-inch diagonal color touch-screen, AM/FM stereo, Bluetooth[®] audio streaming² for two active devices, voice command pass-through to compatible phone, and wireless Apple CarPlay^{®3} and wireless Android Auto^{™4} compatibility

Floor mats – carpeted front and rear

Glove box – lockable electronic

Keyless Open and Start – includes extended-range Remote Keyless Entry

Lighting – front reading lamps, overhead courtesy lamp, dual rear quarter panel area dome lamps, True White backlit switches, True White pin spot lighting in the bin forward of the shifter and front footwells, LED glove box lighting and backlit USB ports⁵

Media – USB ports⁵; one Type-A and one Type-C, in front center stack storage area; one Type-A and one Type-C, charge-only, on rear of center console

Rear Vision Camera⁶

Steering column – manual tilt and telescopic

Steering wheel – 3-spoke with mounted audio, cruise and phone controls

Theft-deterrent system – unauthorized entry

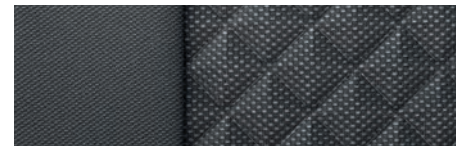
Tire Pressure Monitoring System – with Tire Fill Alert (does not monitor spare tire, if equipped)

Umbrella holders – driver and front passenger doors

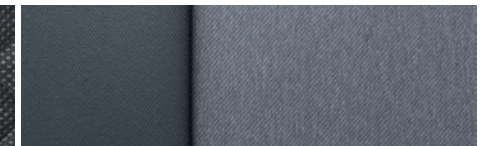
Windows – power with driver express-up/-down, all others express-down

¹ Chevrolet Infotainment System functionality varies by model. Full functionality requires compatible Bluetooth and smartphone, and USB connectivity for some devices. ² Go to my.chevrolet.com/learnAbout/bluetooth to find out which phones are compatible with the vehicle. Full Bluetooth feature functionality varies by device, model and software version. ³ Vehicle user interface is a product of Apple and its terms and privacy statements apply. Requires compatible iPhone and data plan rates apply. ⁴ Vehicle user interface is a product of Google and its terms and privacy statements apply. Requires the Android Auto app on Google Play and a compatible Android smartphone. Data plan rates apply. You can check which smartphones are compatible at g.co/androidauto/requirements. ⁵ Not compatible with all devices. ⁶ Read the vehicle Owner's Manual for important feature limitations and information.

MODELS (CONTINUED)



Jet Black Premium Cloth (shown)



Dark Galvanized/Light Galvanized Premium Cloth³

1LT In addition to or replacing L features, 1LT includes:

EXTERIOR

Glass – deep-tinted rear windows

Tire – compact spare

INTERIOR

Seat – driver 8-way power adjuster with power lumbar control

SiriusXM^{®1} – All Access Package with 3-month trial subscription

2LT In addition to or replacing 1LT features, 2LT includes:

MECHANICAL

Engine – 2.0L turbocharged DOHC 4-cylinder with Variable Valve Timing (VVT), Direct Injection and stop/start technology

EXTERIOR

IntelliBeam – automatic high beam on/off

INTERIOR

Automatic Emergency Braking²

Following Distance Indicator²

Forward Collision Alert²

Front Pedestrian Braking²

Lane Keep Assist with Lane Departure Warning²



18" Bright Silver-Painted Aluminum Wheels
Standard on 1LT and 2LT



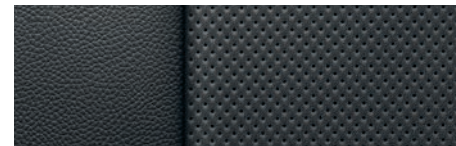
18" Gloss Black-Painted Aluminum Wheels
Available on 1LT and 2LT with Midnight/Sport Edition



20" Gloss Black-Painted Aluminum
Wheels with Red Accents
Available on 2LT with Redline Edition

¹ If you decide to continue service after your trial, the subscription plan you choose will automatically renew thereafter and you will be charged according to your chosen payment method at then-current rates. Fees and taxes apply. See the SiriusXM Customer Agreement at siriusxm.com for complete terms and how to cancel. All fees, content, features and availability are subject to change. ² Read the vehicle Owner's Manual for important feature limitations and information. ³ Not available with Summit White, Pewter Metallic, Red Hot or Cayenne Orange Metallic exterior colors.

MODELS (CONTINUED)



Jet Black Perforated Leather-Appointed Seating Surfaces



Dark Galvanized/Light Galvanized Perforated Leather-Appointed Seating Surfaces (shown)²

3LT In addition to or replacing 2LT features, 3LT includes:

EXTERIOR

Liftgate – power, programmable

Mirrors – heated, power-adjustable, manual-folding with integrated turn signal indicators and driver-side auto-dimming feature

Roof rails – Black

INTERIOR

Lane Change Alert with Side Blind Zone Alert¹

Mirror – rearview, auto-dimming

Rear Cross Traffic Alert¹

Rear Park Assist¹

Remote vehicle starter system

Seat – front passenger 6-way power adjuster with power lumbar control

Seating surfaces – perforated leather-appointed

Seats – heated driver and front passenger

Steering wheel – leather-wrapped

Universal Home Remote – programmable, includes garage door opener



18" Bright Silver-Painted Aluminum Wheels
Standard on 3LT



20" Bright Silver-Painted Aluminum Wheels
Available on 3LT



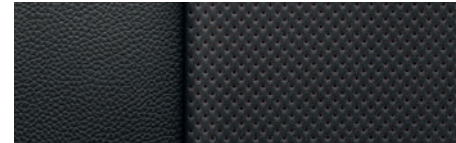
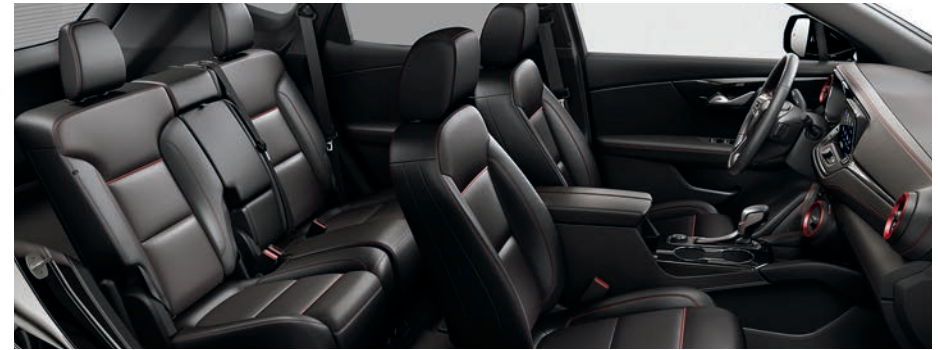
18" Gloss Black-Painted Aluminum Wheels
Available on 3LT with Midnight/Sport Edition



20" Gloss Black-Painted Aluminum
Wheels with Red Accents
Available on 3LT with Redline Edition

¹ Read the vehicle Owner's Manual for important feature limitations and information. ² Not available with Summit White, Pewter Metallic, Red Hot or Cayenne Orange Metallic exterior colors.

MODELS (CONTINUED)



Jet Black Perforated Leather-Appointed Seating Surfaces with Red Accents



20" Machined-Face Aluminum Wheels with Dark Android-Painted Pockets Standard on RS



21" Gloss Black-Painted Aluminum Wheels Available on RS

RS In addition to or replacing 3LT features, RS includes:

MECHANICAL

Engine – 3.6L DOHC V6 with Variable Valve Timing (VVT), Direct Injection and stop/start technology

Exhaust – dual-outlet with bright rectangular tips

RS enhancements – specific steering ratio and tuned dampers

EXTERIOR

Grille – gloss Black hexagonal design with Black Ice Chrome header bar, Black bowtie emblem and RS badging

Liftgate – power, programmable, hands-free with Chevrolet emblem projection

Moldings – high-gloss Black-painted lower bodyside with Black Ice Chrome inserts

INTERIOR

Driver Information Center – enhanced 8-inch diagonal reconfigurable multi-color display with digital compass

Entertainment – Chevrolet Infotainment 3 Plus system¹ with Navigation²; 8-inch diagonal HD color touch-screen, AM/FM stereo, Bluetooth[®] audio streaming³ for two active devices, voice command pass-through to compatible phone, wireless Apple CarPlay^{®4} and wireless Android Auto^{™5} compatibility, available Alexa Built-In⁶, enhanced voice recognition, additional memory for In-Vehicle Apps⁷ and Connected Navigation⁸

Lighting – ambient with pin spot lighting in the map pocket area, True White light pipes on the passenger side of the instrument panel and below the front door handles, and LED lighting between the center console cup holders

Media – USB ports⁹; one Type-A and one Type-C, SD card reader and auxiliary input jack in floor console storage bin

Power outlet – 120-volt, on rear of center console

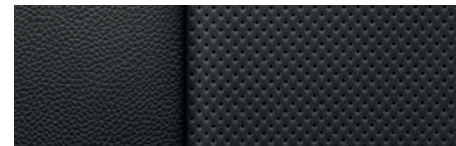
Rear Vision Camera¹⁰ – HD

SiriusXM[®] with 360L¹¹ – All Access Package with 3-month trial subscription

Steering wheel – heated steering wheel with selectable automatic activation

¹ Chevrolet Infotainment System functionality varies by model. Full functionality requires compatible Bluetooth and smartphone, and USB connectivity for some devices. ² Map coverage available in the United States, Puerto Rico and Canada. ³ Go to my.chevrolet.com/learnAbout/bluetooth to find out which phones are compatible with the vehicle. Full Bluetooth feature functionality varies by device, model and software version. ⁴ Vehicle user interface is a product of Apple and its terms and privacy statements apply. Requires compatible iPhone and data plan rates apply. ⁵ Vehicle user interface is a product of Google and its terms and privacy statements apply. Requires the Android Auto app on Google Play and a compatible Android smartphone. Data plan rates apply. You can check which smartphones are compatible at g.co/androidauto/requirements. ⁶ Functionality is subject to limitations and varies by vehicle, infotainment system and location. Select service plan required. Certain Alexa Skills require account linking to use. Visit onstar.com for additional details. ⁷ Requires active service plan and paid AT&T vehicle data plan or compatible device with 3G/4G LTE tethering data plan. Visit onstar.com for details and limitations. ⁸ Connected Navigation and Real-time Points of Interest (POI) only available on properly equipped vehicles. Requires paid plan or trial. Map coverage available in the United States, Puerto Rico and Canada. Visit onstar.com for details and limitations. ⁹ Not compatible with all devices. ¹⁰ Read the vehicle Owner's Manual for important feature limitations and information. ¹¹ If you decide to continue service after your trial, the subscription plan you choose will automatically renew thereafter and you will be charged according to your chosen payment method at then-current rates. Fees and taxes apply. See the SiriusXM Customer Agreement at siriusxm.com for complete terms and how to cancel. All fees, content, features and availability are subject to change. Certain features require a SiriusXM subscription and the Chevrolet Connected Access plan. See siriusxm.com and onstar.com for details and limitations.

MODELS (CONTINUED)



Jet Black Perforated Leather-Appointed Seating Surfaces with Sueded Microfiber Inserts



Maple Sugar Perforated Leather-Appointed Seating Surfaces with Sueded Microfiber Inserts (shown)

PREMIER In addition to or replacing RS features, Premier includes:

MECHANICAL

Exhaust – dual-outlet with bright rectangular tips integrated into fascia

EXTERIOR

Door handles – body-color with chrome accent

Grille – signature Black grille with bright chrome accents and bright chrome header bar

Moldings – body-color with chrome inserts

Roof rails – Silver-painted

INTERIOR

Audio – Bose premium 8-speaker audio system with Richbass woofer under center console

Memory – recalls two presets for power driver seat, exterior mirrors, and power tilt and telescopic steering column

Seating surfaces – perforated leather-appointed with sueded microfiber inserts

Seats – ventilated driver and front passenger; heated rear outboard seating positions

Sill plates – front, bright

Steering column – power tilt and telescopic



20" Machined-Face Aluminum Wheels with Medium Android-Painted Pockets Standard on Premier



21" Pearl Nickel-Painted Aluminum Wheels Available on Premier

SPECIFICATIONS

● STANDARD ○ AVAILABLE – NOT AVAILABLE

	L	1LT	2LT	3LT	RS	PREMIER
EXTERIOR						
Chevrolet bowtie emblems: Black (requires available Midnight/Sport Edition on 1LT, 2LT and 3LT or available Redline Edition on 2LT and 3LT)	–	○	○	○	●	–
Door handles: Body-color	●	●	●	●	●	–
Body-color with chrome accent	–	–	–	–	–	●
Headlamps: High-intensity discharge	●	●	●	●	●	●
LED (requires available Driver Confidence II Package)	–	–	–	–	○	○
Automatic on/off with automatic delay	●	●	●	●	●	●
IntelliBeam: Automatic high beam on/off	–	–	●	●	●	●
Liftgate: Manual	●	●	●	–	–	–
Power, programmable (requires available Convenience and Driver Confidence Package on 1LT and 2LT)	–	○	○	●	–	–
Power, programmable, hands-free with Chevrolet emblem projection	–	–	–	–	●	●
Mirrors: Heated, power-adjustable, manual-folding	●	●	●	–	–	–
Heated, power-adjustable, manual-folding with integrated turn signal indicators and driver-side auto-dimming feature (requires available Convenience and Driver Confidence Package on 1LT and 2LT)	–	○	○	●	●	●
Body-color caps	●	●	●	●	●	●
Black caps (requires available Midnight/Sport Edition on 1LT, 2LT and 3LT or available Redline Edition on 2LT and 3LT)	–	○	○	○	–	–
Roof rails: Black (requires available Convenience and Driver Confidence Package or Midnight/Sport Edition on 1LT and 2LT)	–	○	○	●	●	–
Silver-painted	–	–	–	–	–	●
Tires: P235/65R18	●	●	●	●	–	–
P235/55R20 (requires available Redline Edition on 2LT and 3LT or available 20" Bright Silver-painted aluminum wheels on 3LT)	–	–	○	○	●	●
P265/45R21 (requires available 21" gloss Black-painted aluminum wheels on RS; requires available Pearl Nickel-painted aluminum wheels on Premier)	–	–	–	–	○	○
Compact spare	–	●	●	●	●	●
Tire inflator kit	●	–	–	–	–	–
ENGINE/CHASSIS						
All-wheel drive (AWD); includes trailering equipment on Premier	–	–	○	○	–	○
Advanced Twin-Clutch AWD; includes trailering equipment	–	–	–	–	○	–
Engine: 2.5L DOHC 4-cylinder with Variable Valve Timing (VVT), Direct Injection and stop/start technology with override; 193 hp @ 6300 rpm, 188 lb.-ft. of torque @ 4400 rpm	●	●	–	–	–	–
2.0L turbocharged DOHC 4-cylinder with Variable Valve Timing (VVT), Direct Injection and stop/start technology with override; 227 hp @ 5000 rpm, 258 lb.-ft. of torque @ 1500-4000 rpm	–	–	●	●	–	● ¹
3.6L DOHC V6 with Variable Valve Timing (VVT), Direct Injection and stop/start technology with override; 308 hp @ 6700 rpm, 270 lb.-ft. of torque @ 5000 rpm	–	–	○	○	●	○ ¹
Engine block heater	○	○	○	○	○	●

	L	1LT	2LT	3LT	RS	PREMIER
ENGINE/CHASSIS (CONTINUED)						
Trailering Equipment: Heavy-duty cooling system and Hitch Guidance ² with trailer assist guidelines (requires available 3.6L V6 engine)	–	–	○	○	–	–
Heavy-duty cooling system and Hitch Guidance with Hitch View ² (requires available 3.6L V6 engine; included on RS and Premier AWD with 3.6L V6 engine; 3LT also requires available Chevrolet Infotainment 3 Plus system ³ with Navigation ⁴)	–	–	–	○	○	○
Transmission: 9-speed automatic, electronically controlled with overdrive and Driver Shift Control	●	●	●	●	●	●
SAFETY & SECURITY						
Airbags: ⁵ Frontal airbags for driver and front passenger; knee airbag for driver; seat-mounted side-impact airbags for driver and front passenger; head-curtain airbags for front and rear outboard seating positions; includes front Passenger Sensing System for frontal passenger airbag	●	●	●	●	●	●
Automatic Emergency Braking ²	–	–	●	●	●	●
Enhanced Automatic Emergency Braking ² (requires available Driver Confidence II Package)	–	–	–	–	○	○
Door locks: Manual rear door, child security	●	●	●	●	●	●
Following Distance Indicator ²	–	–	●	●	●	●
Forward Collision Alert ²	–	–	●	●	●	●
Front Pedestrian Braking ²	–	–	●	●	●	●
Lane Change Alert with Side Blind Zone Alert ² (requires available Convenience and Driver Confidence Package on 1LT and 2LT)	–	○	○	●	●	●
Lane Keep Assist with Lane Departure Warning ²	–	–	●	●	●	●
LATCH system (Lower Anchors and Tethers for Children), for child restraint systems	●	●	●	●	●	●
Rear Cross Traffic Alert ² (requires available Convenience and Driver Confidence Package on 1LT and 2LT)	–	○	○	●	●	●
Rear Park Assist ² (requires available Convenience and Driver Confidence Package on 1LT and 2LT)	–	○	○	●	●	●
Rear Vision Camera ²	●	●	●	●	–	–
HD Rear Vision Camera ² (requires available Sound and Technology Package on 3LT)	–	–	–	○	●	●
HD Surround Vision ² ; includes HD Rear Vision Camera ² (requires available Sound and Technology Package on 3LT; requires available Driver Confidence II Package on RS and Premier)	–	–	–	○	○	○
Safety Alert Seat ² (requires available Driver Confidence II Package)	–	–	–	–	○	○
Teen Driver technology	●	●	●	●	●	●
Theft-deterrent system: Unauthorized entry	●	●	●	●	●	●

¹ Some Premier models will have been produced with the 3.6L V6 engine as standard equipment at start of production. ² Read the vehicle Owner's Manual for important feature limitations and information. ³ Chevrolet Infotainment System functionality varies by model. Full functionality requires compatible Bluetooth and smartphone, and USB connectivity for some devices. ⁴ Map coverage available in the United States, Puerto Rico and Canada. ⁵ A NOTE ON CHILD SAFETY: Always use seat belts and the correct child restraint for your child's age and size, even with airbags. Even in vehicles equipped with the Passenger Sensing System, children are safer when properly secured in a rear seat in the appropriate infant, child or booster seat. Never place a rear-facing infant restraint in the front seat of any vehicle equipped with an active frontal airbag. See your vehicle Owner's Manual and the child safety seat instructions for more safety information.

SPECIFICATIONS (CONTINUED)

● STANDARD ○ AVAILABLE – NOT AVAILABLE

	L	1LT	2LT	3LT	RS	PREMIER
SAFETY & SECURITY (CONTINUED)						
Tire Pressure Monitoring System with Tire Fill Alert (does not monitor spare tire, if equipped)	●	●	●	●	●	●
Up to 3 months of OnStar® Safety & Security coverage ¹ which includes Automatic Crash Response, Stolen Vehicle Assistance, Emergency Services, Crisis Assist, Roadside Assistance and Turn-by-Turn Navigation ²	●	●	●	●	●	●
INTERIOR						
Air conditioning: Automatic, dual-zone with individual climate settings for driver and front passenger	●	●	●	●	●	●
Air filtration system	●	●	●	●	●	●
Rear console air vents	●	●	●	●	●	●
Cruise control: Electronic with Set and Resume Speed	●	●	●	●	●	●
Adaptive Cruise Control ³ (requires available Driver Confidence II Package)	–	–	–	–	○	○
Defogger: Electric rear-window	●	●	●	●	●	●
Door locks: Power, programmable with lockout protection	●	●	●	●	●	●
Driver Information Center: 4.2-inch diagonal multi-color display	●	●	●	●	–	–
Enhanced 8-inch diagonal reconfigurable multi-color display	–	–	–	–	●	●
Digital compass	●	●	●	●	●	●
Rear Seat Reminder ⁴ notification	●	●	●	●	●	●
Floor mats: Front and rear, carpeted	●	●	●	●	●	●
Floor-mounted rail system with adjustable cargo fence (requires available Enhanced Convenience Package on RS)	–	–	–	–	○	●
Keyless Open and Start: Includes extended-range Remote Keyless Entry and panic feature	●	●	●	●	●	●
Memory settings: Recalls two presets for power driver seat, exterior mirrors, and power tilt and telescopic steering column (requires available Enhanced Convenience Package on RS)	–	–	–	–	○	●
Mirror: Rearview, manual day/night	●	●	●	–	–	–
Rearview, auto-dimming (requires available Convenience and Driver Confidence Package on 1LT and 2LT)	–	○	○	●	●	●
Rear Camera Mirror ³ (requires available Sound and Technology Package on 3LT; requires available Driver Confidence II Package on RS and Premier)	–	–	–	○	○	○

	L	1LT	2LT	3LT	RS	PREMIER
INTERIOR (CONTINUED)						
Power outlet: 120-volt, on rear of center console (requires available Sound and Technology Package on 3LT)	–	–	–	○	●	●
Remote vehicle starter system (requires available Convenience and Driver Confidence Package on 1LT and 2LT)	–	○	○	●	●	●
Sill plates: Front, bright	–	–	–	–	–	●
Steering column: Manual tilt and telescopic	●	●	●	●	●	●
Power tilt and telescopic (requires available Enhanced Convenience Package on RS)	–	–	–	–	○	●
Steering wheel: 3-spoke with mounted audio, cruise and phone controls	●	●	●	●	●	●
Leather-wrapped	–	–	–	●	●	●
Heated, with selectable automatic activation	–	–	–	–	●	●
Sunroof: Panoramic power with power sunshade	–	–	–	○	○	○
Universal Home Remote: Programmable, includes garage door opener (requires available Convenience and Driver Confidence Package on 1LT and 2LT)	–	○	○	●	●	●
Visors: Driver and front passenger illuminated vanity mirrors, covered	●	●	●	●	●	●
Windows: Power with driver express-up/-down, all others express-down	●	●	●	●	●	●
SEATING						
Seats: Front bucket	●	●	●	●	●	●
Rear adjustable sliding, manual-folding 60/40 split-bench with center armrest and recline	●	●	●	●	●	●
Seat: Driver 6-way manual adjuster	●	–	–	–	–	–
Driver 8-way power adjuster with 2-way power lumbar control	–	●	●	●	●	●
Front passenger 4-way manual adjuster	●	●	●	–	–	–
Front passenger 6-way power adjuster with power lumbar control	–	–	–	●	●	●
Heated driver and front passenger seats (requires available Convenience and Driver Confidence Package on 1LT and 2LT)	–	○	○	●	●	●
Heated rear outboard seating positions (requires available Enhanced Convenience Package on RS)	–	–	–	–	○	●
Ventilated driver and front passenger seats (requires available Enhanced Convenience Package on RS)	–	–	–	–	○	●

¹ When you select a monthly plan within 30 days of activating your 1-month trial, you'll receive the first 2 months of the plan you select at no additional charge when you associate an approved payment method on file to your account and authorize recurring payments for your service plan. The amount and frequency of each recurring payment is based upon the service(s) and payment interval(s) you select from the options provided. After the trial expires, OnStar will automatically bill your payment method monthly at then-current standard monthly rates. Plans containing 4G LTE data will be billed every 30 days by AT&T. You may cancel at any time by pushing your blue OnStar button or calling 1-888-466-7827. May not be combined with other offers or retroactively applied. Offer subject to change. ² Advisor-based Turn-by-Turn Navigation is subject to User Terms and limitations, and varies by vehicle model. Map coverage available in the United States, Puerto Rico and Canada. ³ Read the vehicle Owner's Manual for important feature limitations and information. ⁴ Does not detect people or items. Always check rear seat before exiting.

SPECIFICATIONS (CONTINUED)

● STANDARD ○ AVAILABLE – NOT AVAILABLE

	L	1LT	2LT	3LT	RS	PREMIER
ENTERTAINMENT						
Chevrolet Infotainment 3 system ¹ with 8-inch diagonal color touch-screen, AM/FM stereo, Bluetooth [®] audio streaming ² for two active devices, voice command pass-through to compatible phone, and wireless Apple CarPlay ^{®3} and wireless Android Auto ^{™4} compatibility	●	●	●	●	–	–
Chevrolet Infotainment 3 Plus system ¹ with Navigation ⁵ and 8-inch diagonal HD color touch-screen, includes features listed above, available Alexa Built-In ⁶ enhanced voice recognition, In-Vehicle Apps ⁷ and Connected Navigation ⁸ (requires available Sound and Technology Package on 3LT)	–	–	–	○	●	●
Audio: 6-speaker system	●	●	●	●	●	–
8-speaker Bose premium system (requires available Sound and Technology Package on 3LT; requires available Enhanced Convenience Package on RS)	–	–	–	○	○	●
Media: Two USB ports ⁹ ; one Type-A and one Type-C, on instrument panel; two charge-only USB ports ⁹ ; one Type-A and one Type-C, on rear of center console	●	●	●	●	●	●
Two USB ports ⁹ ; one Type-A and one Type-C, SD card reader, and auxiliary input jack in front center storage bin (requires available Sound and Technology Package on 3LT)	–	–	–	○	●	●
Wireless charging ¹⁰ (requires available Driver Confidence II Package)	–	–	–	–	○	○
SiriusXM ^{®11} – All Access Package 3-month trial subscription	–	●	●	●	–	–
SiriusXM with 360L ^{11,12} – All Access Package with 3-month trial subscription (requires available Sound and Technology Package on 3LT)	–	–	–	○	●	●
Available 4G LTE Wi-Fi [®] Hotspot ¹³ for up to seven devices, includes 1 month or 3 GB of data (whichever comes first)	●	●	●	●	●	●
Chevrolet Connected Access ¹⁴ with 10 years of standard connectivity, which currently enables features such as Vehicle Diagnostics and Dealer Maintenance Notification	●	●	●	●	●	●

	L	1LT	2LT	3LT	RS	PREMIER
PACKAGES AND SPECIAL EDITIONS						
Convenience and Driver Confidence Package	–	○	○	–	–	–
Remote vehicle starter system, heated driver and front passenger seats, Universal Home Remote, programmable power liftgate, Black roof rails, Lane Change Alert with Side Blind Zone Alert ¹⁵ , Rear Cross Traffic Alert ¹⁵ , Rear Park Assist ¹⁵ , auto-dimming inside rearview mirror, and outside heated power-adjustable manual-folding mirrors with body-color mirror caps, turn signal indicators and driver-side auto-dimming feature						
Midnight/Sport Edition	–	○	○	○	–	–
18" gloss Black-painted aluminum wheels, gloss Black Blazer badges and grille bar, and Black bowtie emblems and mirror caps; includes Black roof rails on 1LT and 2LT						
Redline Edition	–	–	○	○	–	–
20" gloss Black-painted aluminum wheels with Red accents, Black Blazer badges with Red outline, Black bowtie emblems, Black grille, header bar, window surround, mirror caps and door handles, and Redline decals (requires available Jet Black interior; requires available Convenience and Driver Confidence Package on 2LT) (available with Summit White, Silver Ice Metallic or Black exterior colors)						
Sound and Technology Package	–	–	–	○	–	–
Chevrolet Infotainment 3 Plus system ¹ with Navigation ⁵ ; Bose premium 8-speaker audio system, two USB ports ⁹ and SD card reader in front center storage bin, HD Surround Vision ¹⁵ , Rear Camera Mirror ¹⁵ and 120-volt power outlet on rear of center console						
Enhanced Convenience Package	–	–	–	–	○	–
Bose premium 8-speaker audio system, memory settings, heated rear outboard seating positions, ventilated driver and front passenger seats, and power tilt and telescopic steering column						
Driver Confidence II Package	–	–	–	–	○	○
Wireless charging ¹⁰ , HD Surround Vision ¹⁵ , Rear Camera Mirror ¹⁵ , Adaptive Cruise Control ¹⁵ , Enhanced Automatic Emergency Braking ¹⁵ , Safety Alert Seat ¹⁵ and LED headlights						

¹ Chevrolet Infotainment System functionality varies by model. Full functionality requires compatible Bluetooth and smartphone, and USB connectivity for some devices. ² Go to my.chevrolet.com/learnAbout/bluetooth to find out which phones are compatible with the vehicle. Full Bluetooth feature functionality varies by device, model and software version. ³ Vehicle user interface is a product of Apple and its terms and privacy statements apply. Requires compatible iPhone and data plan rates apply. ⁴ Vehicle user interface is a product of Google and its terms and privacy statements apply. Requires the Android Auto app on Google Play and a compatible Android smartphone. Data plan rates apply. You can check which smartphones are compatible at g.co/androidauto/requirements. ⁵ Map coverage available in the United States, Puerto Rico and Canada. ⁶ Functionality is subject to limitations and varies by vehicle, infotainment system and location. Select service plan required. Certain Alexa Skills require account linking to use. Visit onstar.com for additional details. ⁷ Requires active service plan and paid AT&T vehicle data plan or compatible device with 3G/4G LTE tethering data plan. Visit onstar.com for details and limitations. ⁸ Connected Navigation and Real-time Points of Interest (POI) only available on properly equipped vehicles. Requires paid plan or trial. Map coverage available in the United States, Puerto Rico and Canada. Visit onstar.com for details and limitations. ⁹ Not compatible with all devices. ¹⁰ The system wirelessly charges one compatible mobile device. Some phones have built-in wireless charging technology and others require a special adaptor/back cover. To check for phone or other device compatibility, visit my.chevrolet.com/learn or consult your carrier. ¹¹ If you decide to continue service after your trial, the subscription plan you choose will automatically renew thereafter and you will be charged according to your chosen payment method at then-current rates. Fees and taxes apply. See the SiriusXM Customer Agreement at siriusxm.com for complete terms and how to cancel. All fees, content, features and availability are subject to change. ¹² Certain features require a SiriusXM subscription and the Chevrolet Connected Access plan. See siriusxm.com and onstar.com for details and limitations. ¹³ Service varies with conditions and location. Requires active service and paid AT&T data plan. Visit onstar.com for details and limitations. Availability subject to change. ¹⁴ Standard connectivity available only to original purchaser for 10 years. Connected Access services are subject to change. Does not include emergency or security services. Diagnostic capabilities vary by model and service plan. Message and data rates may apply. Requires contact method on file and enrollment to receive alerts. Not all issues will deliver alerts. Visit onstar.com for details and limitations. ¹⁵ Read the vehicle Owner's Manual for important feature limitations and information.

ACCESSORIES



Premium Carpet Mats with Red Binding available from Chevrolet Accessories.



Molded Assist Steps available from Chevrolet Accessories.



Black Illuminated Bowtie Emblem available from Chevrolet Accessories.



Rear-Seat Infotainment System with DVD Player available from Chevrolet Accessories.

DIMENSIONS

Length	191.4"	Width	76.7"	Head Room (front/rear)	39.8"/38.6"
Wheelbase	112.7"	Front Track	66.4"	Head Room with Sunroof (front/rear)	38.2"/36.8"
Height	67.0"	Rear Track	66.2"	Leg Room (front/rear)	41.0"/39.6"
				Shoulder Room (front/rear)	59.1"/58.6"

MAXIMUM CAPACITIES

Fuel tank (approximate)	19.4 gallons (FWD); 21.7 gallons (AWD)
Trailer weight rating ¹	4,500 lbs.
Seating	Seats 5
Cargo volume ²	30.5 cu. ft. (rear seats up) 64.2 cu. ft. (rear seats folded down)

EPA-ESTIMATED FUEL ECONOMY

2.0L FWD	22 MPG city/29 highway/25 combined
2.0L AWD	22 MPG city/27 highway/24 combined
2.5L FWD	21 MPG city/27 highway/23 combined
3.6L FWD	20 MPG city/27 highway/22 combined
3.6L AWD	19 MPG city/26 highway/21 combined



Enroll. It's quick, it's easy and there is no cost to join. You will automatically receive points just for enrolling.³ To enroll, visit mychevroletrewards.com.

Earn. Earn points on eligible new vehicle leases or purchases, which can be redeemed toward accessories⁴; vehicle service and more. Plus, get points for paid service,⁵ select OnStar[®] and Connected Services plans⁶ and many others.

Enjoy. Use points toward eligible accessories⁴ paid service, eligible new vehicles⁷ and more. It's our way of saying thanks!



First oil change is covered⁸ Experience Chevrolet Complete Care, a comprehensive coverage, limited warranty and protection program that comes standard with every new 2021 Chevrolet Blazer lease and purchase.

Simply, it is designed around you, to make it easy to help keep your Chevrolet like new – and give you the confidence you deserve. For more information, visit chevrolet.com/complete-care.

NEW VEHICLE LIMITED WARRANTY

Chevrolet will warrant each 2021 Blazer with:

3-year/36,000-mile⁹ Bumper-to-Bumper Limited Warranty.

6 years/100,000 miles⁹ of Rust-Through Protection.

5-year/60,000-mile⁹ Powertrain Limited Warranty.

5 years/60,000 miles⁹ of Roadside Assistance¹⁰ and Courtesy Transportation.

¹ Requires available trailering equipment. Before you buy a vehicle or use it for trailering, carefully review the Trailering section of the Owner's Manual. The weight of passengers, cargo and options or accessories may reduce the amount you can tow.
² Cargo and load capacity limited by weight and distribution. ³ Must be 18 years or older. Points may be earned and redeemed only at participating GM entities, dealers or third party retailers in the United States (excluding Puerto Rico, the U.S. Virgin Islands or Guam). Points are not earned on taxes or certain fees, and expire 5 years from when points are earned. Some restrictions apply. For more information, please view full program Terms & Conditions. ⁴ Members may use the voucher on eligible Chevrolet, Buick, GMC and Cadillac Accessories purchased through a participating dealership. Voucher must be used by expiration date noted. Any unused amount of the voucher will be forfeited. ⁵ Excludes taxes, fees and body shop repair orders. It could take up to 15 days for points to post to your account. ⁶ Connected vehicle services vary by vehicle model and require working electrical system, cell reception and GPS signal. Requires active service plan. OnStar links to emergency services. Visit onstar.com for details and limitations. ⁷ Not compatible with some other offers, including the GM Employee Discount programs. Excludes 2020 Chevrolet Corvette. Dealer contribution may affect final consumer cost. ⁸ Maintenance visit must occur within first year of vehicle delivery. Service visit consists of ACDelco dexos1™ Full Synthetic Oil and Filter Change/Tire Rotation/MPVI. Does not include air filters. See participating dealer for other restrictions and complete details. ⁹ Whichever comes first. See dealer for details. ¹⁰ Roadside service provided by Allstate Roadside Services. Limitations apply.

IMPORTANT INFORMATION

Chevrolet Owner Center (my.chevrolet.com). Everything you need to know. Anything you need to do. Your Chevrolet Owner Center makes it easy. Create your account today to get the most out of your new vehicle. Get special alerts and offers, schedule service, review your maintenance schedule, and view how-to videos specifically for your vehicle. All online, anytime. Visit the Owner Center today to register or take a tour.

Engines. Chevrolet products are equipped with engines produced by GM Global Propulsion Systems or other suppliers to GM worldwide. The engines in Chevrolet products may also be used in other GM makes and models.

Assembly. Chevrolet vehicles and their components are assembled or produced by different operating units of General Motors, its subsidiaries or suppliers to GM worldwide. We sometimes find it necessary to produce Chevrolet vehicles with different or differently sourced components than originally scheduled. Since some options may be unavailable when your vehicle is assembled, we suggest you verify that your vehicle includes the equipment you ordered and that, if there were changes, they are acceptable to you.

Chevrolet Connected Services and OnStar. Connected vehicle services vary by vehicle model and require an active service plan, working electrical system, cell reception and GPS signal. OnStar links to emergency services. Visit onstar.com for details and limitations.

A note on child safety. Always use seat belts and the correct child restraint for your child's age and size, even with airbags. Even in vehicles equipped with the Passenger Sensing System, children are safer when properly secured in a rear seat in the appropriate infant, child or booster seat. Never place a rear-facing infant restraint in the front seat of any vehicle equipped with an active frontal airbag. See your vehicle Owner's Manual and the child safety seat instructions for more safety information.

Important words about this catalog. We have tried to make this catalog comprehensive and factual. We reserve the right, however, to make changes at any time, without notice, in prices, colors, materials, equipment, specifications, models and availability. Specifications, dimensions, measurements, ratings and other numbers in this catalog

and other printed materials provided at the dealership or affixed to vehicles are approximations based on design and engineering drawings, prototypes and laboratory tests. Your vehicle may differ due to variations in manufacture and equipment. Since some information may have been updated since the time of printing, please check with your Chevrolet dealer for complete details. Chevrolet reserves the right to lengthen or shorten the model year for any product for any reason or to start and end model years at different times. Certain vehicle features may lose their usefulness over time due to obsolescence from technological changes. Unless otherwise noted, all claims based on GM Mid SUV-Crossover segment and latest available competitive information. Excludes other GM vehicles.

Fleet orders. Some standard content may be deleted on fleet orders. See dealer for details.

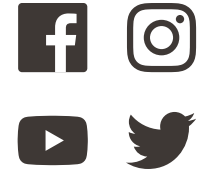
Chevrolet ownership experience. Chevrolet is committed to enhancing the vehicle shopping and ownership experience through a wide array of programs. Visit chevrolet.com to build and price, find a vehicle, request a quote, compare vehicles, find financial tools or track your vehicle order. You'll also find information about 24-hour Roadside Assistance, Courtesy Transportation, Customer Assistance, GM Mobility, safety and current incentives.

Chevrolet.com/safety. Chevrolet is committed to helping keep you and your family safe – from the start of your journey to your destination. That's why Chevrolet vehicles offer standard and available safety and security features to help give you peace of mind.

GMmobility.com (1-800-323-9935). GM MobilitySM offers financial assistance for eligible adaptive equipment to make automotive travel easier for persons with disabilities or special transportation needs. To learn more about special GM Mobility offers, visit gmmobility.com.

The BuyPower Card. The Chevrolet BuyPower Card – Every purchase you make with the BuyPower Card from Capital One* helps you earn toward an eligible new Chevrolet, Buick, GMC or Cadillac vehicle. There's no limit on the amount you can earn or redeem, and your Earnings don't expire. Visit chevroletbuypowercard.com/catalogs.

* Capital One, N.A. is the issuer of the BuyPower Card. General Motors ("GM") is responsible for the operation and administration of the Earnings program.



GM, the GM logo, Chevrolet, the Chevrolet logo, and the slogans, emblems, vehicle model names, vehicle body designs and other marks appearing in this catalog are the trademarks and/or service marks of General Motors, its subsidiaries, affiliates or licensors. ©2020 OnStar LLC. All rights reserved. Sirius, XM, SiriusXM and all related marks and logos are trademarks of Sirius XM Radio Inc. Amazon, Alexa and all related marks are trademarks of Amazon.com, Inc. or its affiliates. The Bluetooth word mark is a registered trademark owned by Bluetooth SIG, Inc., and any use of such mark by Chevrolet is under license. Bose is a registered trademark and Richbass is a trademark of the Bose Corp.

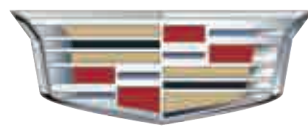
©2020 General Motors. All rights reserved. September 2020

FIND NEW ROADS™

CHEVROLET.COM



MURRAY



Cadillac

403.527.1141

WWW.MURRAYCHEV.CA

**1270 TRANS CANADA WAY SE
MEDICINE HAT, AB - T1B 1J5**