

CAMARO 2021

CHEVROLET





## **G FORCES COME STANDARD.**

There's no substitute for a good adrenaline rush. Chevy Camaro has been triggering them for decades. Today's sixth-generation version is sleek, fast and agile, whether the road is curved or straight. Its architecture is lightweight and ultra-strong, with a precisely tuned suspension that helps the driver feel connected to the road. Powertrain options range from a 2.0L Turbo all the way up to an available 650-horsepower supercharged 6.2L V8. Once you experience the full scope of Camaro performance, you'll never look at rush hour the same way again.

**FIND NEW ROADS™**

Camaro 2SS Coupe in Riverside Blue  
Metallic with available features.

## MODELS

### LS

Welcome to the club. Camaro LS Coupe provides the essentials that make Camaro one of the most respected sports cars in the world.

A 275-horsepower 2.0L Turbo engine offers 0-to-60 times of 5.4 seconds! LS Coupe also includes a dual-outlet exhaust with bright tips, 18-inch Silver-painted aluminum wheels and power-adjustable mirrors.



### LT

Camaro LT offers a world of possibilities. Coupe or Convertible. 2.0L Turbo or available 3.6L V6. There's even a striking RS appearance option that includes 20-inch 5-split-spoke premium Gray-painted machined-face aluminum wheels, tinted LED taillamps, RS-specific grilles, Black bowtie emblems and a decklid-mounted spoiler.

Choose from a 6-speed manual transmission or an available 10-speed paddle-shift automatic on V6 models. Standard safety technology on 3LT includes Forward Collision Alert<sup>2</sup>, Lane Change Alert<sup>2</sup> with Side Blind Zone Alert<sup>2</sup>, Rear Park Assist<sup>2</sup> and Rear Cross Traffic Alert<sup>2</sup>.



<sup>1</sup> Based on initial vehicle movement. LS with 6-speed manual transmission. <sup>2</sup> Read the vehicle Owner's Manual for important feature limitations and information.

## MODELS

### LT1

Now there's an affordable way to enjoy the thrill of a V8-powered Camaro.

A 455-horsepower 6.2L V8 engine, shared with Camaro SS, is standard. Choose from either a 6-speed manual transmission or an available 10-speed paddle-shift automatic.

LT1 is distinguished by its domed hood, LT1 fender badging and 20-inch aluminum wheels. An RS Package is newly available, as is a Redline Edition.



### SS

Since day one, SS has been the heart and soul of Camaro performance.

The driving force is its 6.2L V8 engine. SS also features a 6-speed manual transmission with Active Rev Matching or an available 10-speed paddle-shift automatic. Brembo® brakes, 20-inch aluminum wheels (paired with summer-only tires<sup>1</sup>) and available Magnetic Ride Control™ contribute to this American tour de force<sup>2</sup>



<sup>1</sup> These wheels are paired with summer-only tires. Do not use summer-only tires in winter conditions, as it would adversely affect vehicle safety, performance and durability. Use only GM-approved tire and wheel combinations. Unapproved combinations may change the vehicle's performance characteristics. For important tire and wheel information, go to [my.chevrolet.com/learnAbout/chevrolettires](http://my.chevrolet.com/learnAbout/chevrolettires) or see your dealer. <sup>2</sup> Assembled in Lansing, Michigan, of U.S. and globally sourced parts.

## MODELS

### ZL1

The elephant in this room is a 650-horsepower supercharged V8. Available as a Coupe or a Convertible, ZL1 is purpose-built to challenge the most advanced sports cars in the world.

The résumé of this American supercar<sup>1</sup> includes a 6-speed manual transmission or an available 10-speed paddle-shift automatic, Magnetic Ride Control, Brembo<sup>®</sup> 6-piston front and 4-piston rear brake calipers, and a dual-mode performance exhaust. Standard 20-inch forged-aluminum wheels are wrapped in sticky Goodyear Eagle<sup>®</sup> F1 SuperCar<sup>®</sup> G:2 summer-only tires.<sup>2</sup> Custom Launch Control with line lock provides maximum grip at the drag strip.

Long story short: 1.02 g on the skid pad, 0 to 60 in 3.5 seconds<sup>3</sup> and a 198-mph top speed on the test track<sup>4</sup> for ZL1 Coupe.



<sup>1</sup> Assembled in Lansing, Michigan, of U.S. and globally sourced parts. <sup>2</sup> Do not use summer-only tires in winter conditions, as it would adversely affect vehicle safety, performance and durability. Use only GM-approved tire and wheel combinations. Unapproved combinations may change the vehicle's performance characteristics. For important tire and wheel information, go to [my.chevrolet.com/learnAbout/chevrolettires](https://my.chevrolet.com/learnAbout/chevrolettires) or see your dealer. <sup>3</sup> Based on initial vehicle movement. Coupe models with available 10-speed paddle-shift automatic transmission. <sup>4</sup> Coupe models with available 10-speed paddle-shift automatic transmission.

## PACKAGES

### WILD CHERRY DESIGN PACKAGE 1

Make your friends see red with the new Wild Cherry Design Package 1<sup>1</sup>, available on LT, LT1 and SS. It features a Wild Cherry Tintcoat exterior color, Black Metallic Hash Mark Stripes, a Camaro fender badge emblem on LT and SS, wheel center caps with Camaro logo, 20-inch 5-split-spoke polished forged-aluminum wheels, and premium carpeted floor mats with Camaro logo.



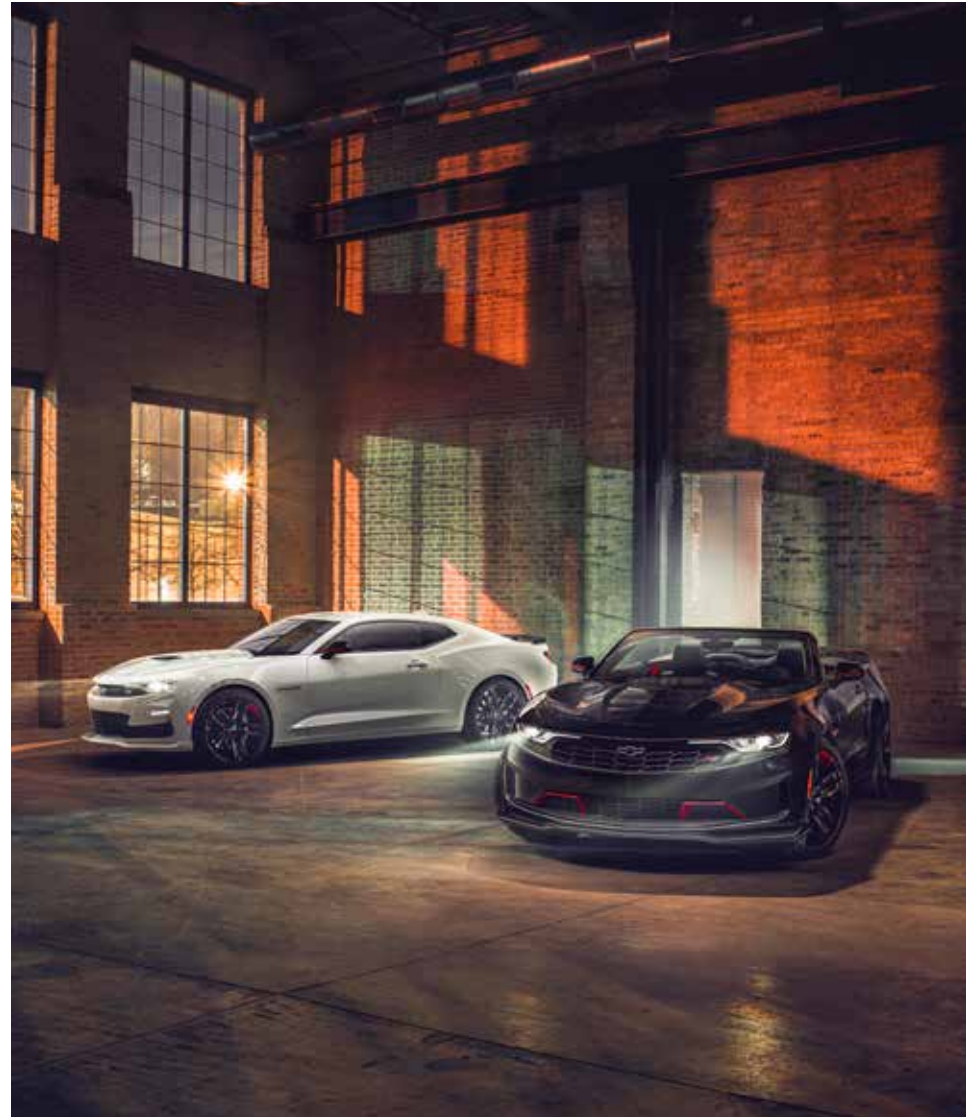
### WILD CHERRY DESIGN PACKAGE 2

In addition to the features included in the Wild Cherry Design Package 1, this version – available on 2LT, 3LT and 2SS – adds Black sueded knee pads, a Black fuel-filler door with visible carbon-fiber insert, Carbon Flash Metallic Second Generation Ground Effects, and the choice of a Black or Silver Center Stripe.



<sup>1</sup> Requires available RS Package.

**SPECIAL EDITION**



## **REDLINE EDITION**

Add some extra revs to the look of your Camaro with the available Redline Edition! It includes 20-inch Black-painted aluminum wheels with Red accents, a Black Camaro fender badge with Red outline, Redline Edition graphics, Red seat belts, Red knee pads and premium carpeted floor mats.

<sup>1</sup> Requires Summit White, Satin Steel Metallic or Black exterior color and Jet Black interior color. Requires available RS Package on LT and LT1.

## 1LE TRACK PACKAGES

# DIALED IN FOR THE WIN.

When you want maximum track performance on your Camaro LT, SS or ZL1, order 1LE. The big news for 2021 is the new availability of an amazingly quick 10-speed paddle-shift automatic transmission on SS and ZL1.

**Turbo 1LE.** The 1LE Track Performance Package for the Camaro 2.0L Turbo includes FE3 suspension components, heavy-duty cooling, Brembo® 4-piston front brake calipers, 20-inch Black-painted forged-aluminum wheels and summer-only tires! There's also a rear blade spoiler, an enhanced fuel system for higher cornering loads, a Driver Mode Selector that includes Track mode, and available RECARO® performance seats.

**V6 1LE.** The 335-horsepower V6 1LE includes all the basics of the Turbo 1LE, plus a dual-mode exhaust system. With its aggressive suspension tuning, V6 1LE delivers an estimated 0.97 g in cornering grip on the track.

**SS 1LE.** In addition to the 10-speed paddle-shift automatic that is now available, the 455-horsepower SS 1LE includes an FE4 chassis system with Magnetic Ride Control dampers, plus special springs and stabilizer bars. Brembo 6-piston front brake calipers and Goodyear Eagle® F1 SuperCar® summer-only tires<sup>1</sup> are featured.

**ZL1 1LE.** The most extreme production Camaro ever, ZL1 1LE is designed for track day setups with the ability to readjust for the ride home. Besides its LT4 supercharged V8, ZL1 1LE includes adjustable front camber and ride height of the Multimatic DSSV™ dampers, an adjustable rear stabilizer bar, a fixed carbon-fiber rear wing and dive planes on the edges of the front fascia.



Left to right: Camaro 2SS Coupe in Satin Steel Metallic, Camaro 3LT Coupe in Red Hot and Camaro ZL1 Coupe in Summit White.

<sup>1</sup> Do not use summer-only tires in winter conditions, as it would adversely affect vehicle safety, performance and durability. Use only GM-approved tire and wheel combinations. Unapproved combinations may change the vehicle's performance characteristics. For important tire and wheel information, go to [my.chevrolet.com/learnAbout/chevrolettires](https://my.chevrolet.com/learnAbout/chevrolettires) or see your dealer.

All vehicles shown with available 1LE Track Performance Packages and other available features.



### ENGINEERED TO AWE.

A robust foundation enables a series of performance choices that range from a turbocharged 4-cylinder to a supercharged V8. Featuring aluminum components and MacPherson struts, the **multilink front suspension** is engineered for precision at every turn.

SS and ZL1 feature **Brembo® 4-wheel disc brakes**. Track-tested 4-piston front and rear calipers are standard on SS, while ZL1 has 6-piston front and 4-piston rear calipers.

Take Camaro performance to an even higher level with the available **Heavy-Duty Cooling and Braking Package** that includes an external engine oil cooler, an extra-capacity cooling system and Brembo 4-piston performance front brake calipers on LS and LT. Models equipped with the 2.0L Turbo engine get an auxiliary engine cooler.

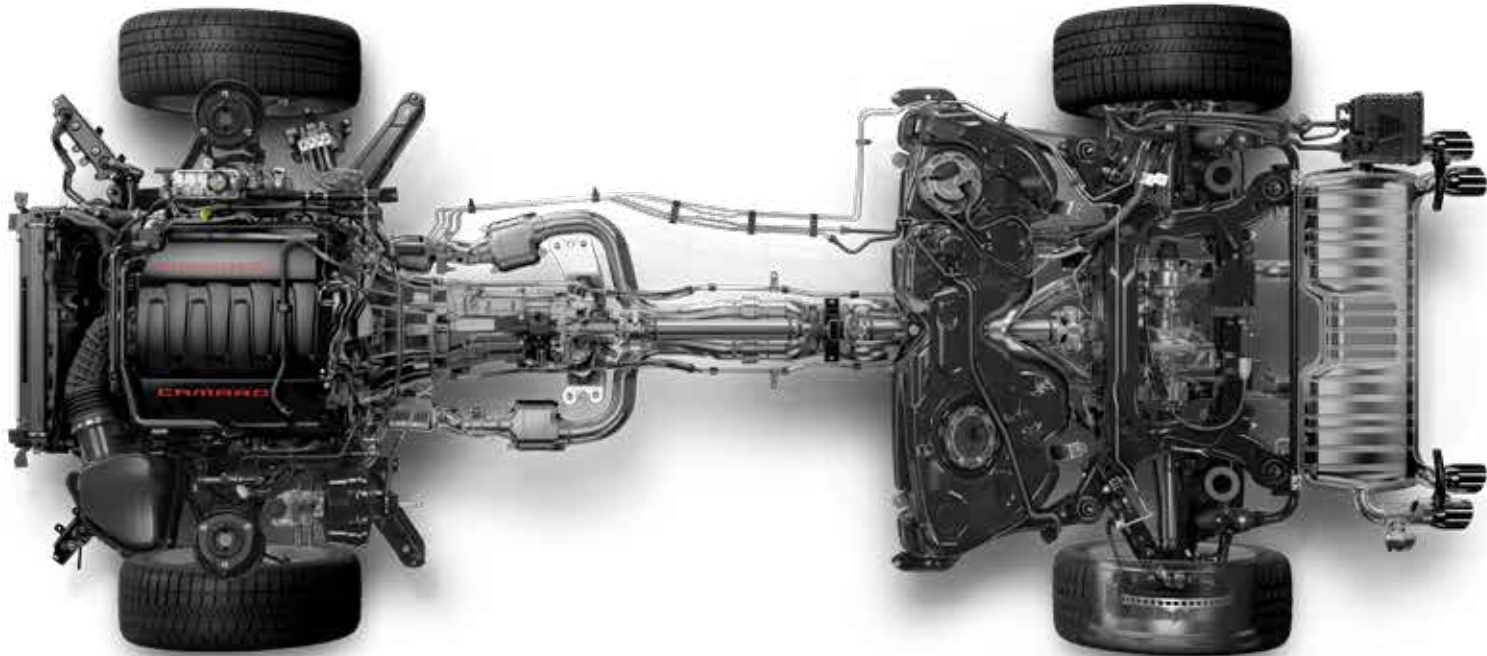
Elevate road feel and response with **Electric Power Steering**. Quick steering ratios contribute to a nimble, controlled feeling with every turn of the wheel.

Tuned specifically for each Camaro model, the **independent rear suspension** provides a refined ride and responsive driving dynamics.

Standard on ZL1 and available on SS, **Magnetic Ride Control** reads the road every millisecond. It then changes damping in just 10 to 15 milliseconds in shocks filled with magnetorheological fluid containing minute iron particles.

Standard on ZL1 Coupe and available on SS Coupe, the **electronic Limited-Slip Differential** continuously modulates torque split to improve traction and acceleration out of corners, enhancing stability and turn-in responsiveness. A mechanical limited-slip differential is standard on LS, LT, LT1 and SS.

Standard on ZL1 and available on SS, LT1 and LT with the available 3.6L V6 engine, the **dual-mode exhaust** provides a more aggressive exhaust note in Sport and Track modes. (Track mode is exclusive to LT with available 1LE Track Performance Package, SS and ZL1.)



## INTERIOR DESIGN

### THE INSIDE STORY.

Climb in and buckle up. Place your hands on the flat-bottom steering wheel. Feel the deeply contoured seating, and notice how everything comes together seamlessly to keep you connected to the road.

Available leather-trimmed seating surfaces and heated and ventilated front seats provide premium comfort. Or choose the available RECARO® performance seats with sueded microfiber inserts as well as Jet Black leather appointments and Red accents. Personalize your Camaro even further with available Red seat belts, Red knee pads and alloy pedals.

Camaro 3LT interior shown with available Ceramic White Interior Package and other available features.

## TECHNOLOGY

# ENGAGE THE ROAD. AND THE WORLD.

Everything is within easy reach, including the Chevrolet Infotainment 3 system! It features an available 8-inch diagonal color touch-screen on select models, wireless Apple CarPlay<sup>®2</sup> and wireless Android Auto<sup>™3</sup> compatibility, and Bluetooth<sup>®</sup> wireless streaming capability<sup>4</sup> for two active devices.

<sup>1</sup> Chevrolet Infotainment System functionality varies by model. Full functionality requires compatible Bluetooth and smartphone, and USB connectivity for some devices. <sup>2</sup> Vehicle user interface is a product of Apple and its terms and privacy statements apply. Requires compatible iPhone and data plan rates apply. <sup>3</sup> Vehicle user interface is a product of Google and its terms and privacy statements apply. Requires the Android Auto app on Google Play and a compatible Android smartphone. Data plan rates apply. You can check which smartphones are compatible at [g.co/androidauto/requirements](http://g.co/androidauto/requirements). <sup>4</sup> Go to [my.chevrolet.com/learnAbout/Bluetooth](http://my.chevrolet.com/learnAbout/Bluetooth) to find out which phones are compatible with the vehicle. Full Bluetooth feature functionality varies by device, model and software version.

Apple CarPlay is a trademark of Apple Inc. Siri, iPhone and Apple Music are trademarks of Apple Inc., registered in the U.S. and other countries. Android Auto is a trademark of Google LLC.

Available Rear Camera Mirror<sup>1</sup>

Available configurable Driver Information Center.

Available interior spectrum lighting.

Available color Head-Up Display.



<sup>1</sup> Read the vehicle Owner's Manual for important feature limitations and information.

LS

## NIMBLE AND QUICK.

- 275-horsepower 2.0L turbocharged engine with Variable Valve Timing and Direct Injection.
- Driver Mode Selector with three modes (Snow/Ice, Tour and Sport).
- 18-inch 5-split-spoke Silver-painted aluminum wheels.
- Dual-outlet stainless steel exhaust with polished tips.



Camaro LS Coupe in  
Satin Steel Metallic.

LT

## POWER AND PRESENCE.

- Available 335-horsepower 3.6L V6 engine with Variable Valve Timing and Direct Injection.
- Available 10-speed paddle-shift automatic transmission.
- Available Bose premium audio system.
- Available LED projector-style headlamps.
- Available RS Package with 20-inch 5-split-spoke aluminum wheels, RS-specific grille and dark-tinted taillamps.



Camaro 3LT Coupe in Red Hot with available RS Package and other available features.

**CONVERTIBLE**



## **BE IN YOUR ELEMENT.**

There's something about a convertible that provides a stronger connection to nature and the road.

But there's more to this story. The Camaro Convertible features modular underbody bracing to allow the same precise, nimble handling as the Coupe.

The top fluidly disappears under the fully automatic hard tonneau cover for a show-car smooth appearance. And the electronic top lowers with the touch of the key fob or the single push of a button – even when driving at speeds up to 30 mph.

With Camaro LT, LT1, SS and ZL1 available as Convertible models, people are going to have a lot more excuses to get out and drive.

Camaro 3LT Convertible in Satin Steel Metallic with available RS Package and other available features.

LT1

## BEWARE THE SLEEPER.

Camaro LT1 is the pure V8 performance experience for the dedicated enthusiast. LT1, available in Coupe or Convertible models, is lightweight, agile and ready to intimidate any would-be competitor.

- 455-horsepower 6.2L V8 engine with Active Fuel Management.™
- Standard 6-speed manual transmission.
- Available 10-speed paddle-shift automatic transmission.
- Brembo® 4-piston front brake calipers.
- LT1 fender badging, Black bowtie emblems, a vented and domed hood, and 20-inch wheels with all-season tires.
- RS Package newly available on LT1.
- Available dual-mode performance exhaust system.

Camaro LT1 Coupe in Wild Cherry Tintcoat (extra-cost color) with available features.





SS



Camaro 2SS Coupe in Riverside Blue Metallic with available features and Second Generation Ground Effects in Metallic Black from Chevrolet Accessories.



## LET'S RUMBLE.

Camaro SS is the essence of Camaro performance. With a 455-horsepower 6.2L V8 engine under its vented hood, SS will propel you from 0 to 60 in 4 seconds flat<sup>1</sup> with the available 10-speed paddle-shift automatic transmission.

- Standard 6-speed manual transmission with Active Rev Matching.
- Brembo<sup>®</sup> 4-piston brake system that takes the Coupe from 60 to 0 mph in 117 feet.
- Domed hood with functional air extractor and SS-specific rear spoiler.
- Limited-slip differential, extra-capacity cooling system and rear differential cooler (Coupe only).
- Staggered wheel size (20-inch x 8.5-inch front and 20-inch x 9.5-inch rear)<sup>2</sup>
- Available Magnetic Ride Control that stiffens the suspension for high-performance driving while helping to maintain a smooth ride.
- Available dual-mode exhaust.



<sup>1</sup> Based on initial vehicle movement. Coupe models with available 10-speed paddle-shift automatic transmission. <sup>2</sup> These wheels are paired with summer-only tires. Do not use summer-only tires in winter conditions, as it would adversely affect vehicle safety, performance and durability. Use only GM-approved tire and wheel combinations. Unapproved combinations may change the vehicle's performance characteristics. For important tire and wheel information, go to [my.chevrolet.com/learnAbout/chevrolettires](http://my.chevrolet.com/learnAbout/chevrolettires) or see your dealer.

ZL1



## HAIL TO THE KING.

Featuring a 650-horsepower 6.2L supercharged V8 engine, ZL1 is the most powerful production Camaro ever built. With a whopping 650 lb.-ft. of torque, ZL1 offers a top track speed of 198 mph and a 0-to-60 time of 3.5 seconds!

- 6-speed manual transmission with Active Rev Matching.
- Available 10-speed paddle-shift automatic transmission.
- Magnetic Ride Control reads the road every millisecond and changes damping in just 10–15 milliseconds.
- Available Performance Traction Management system (Coupe only) helps achieve faster transitions on the track.
- 20-inch forged-aluminum wheels and Goodyear Eagle® F1 SuperCar® G:2 summer-only tires<sup>2</sup> (285/30ZR20 front and 305/30ZR20 rear).
- Brembo® 6-piston front and 4-piston rear brake calipers, plus aero additions that include front and side splitters and a rear wing.

Camaro ZL1 Coupe in Black with available features.

<sup>1</sup> Based on initial vehicle movement. Coupe models with available 10-speed paddle-shift automatic transmission. <sup>2</sup> Do not use summer-only tires in winter conditions, as it would adversely affect vehicle safety, performance and durability. Use only GM-approved tire and wheel combinations. Unapproved combinations may change the vehicle's performance characteristics. For important tire and wheel information, go to [my.chevrolet.com/learnAbout/chevrolettires](http://my.chevrolet.com/learnAbout/chevrolettires) or see your dealer.

## PERFORMANCE



### GET ALL THE POWER DOWN.

Custom launch control, standard on ZL1 and available on SS when you choose the 10-speed paddle-shift automatic transmission, allows you to adjust both the launch rpm and rear wheel slippage through the Driver Information Center (with a brake pressure bar graphic to assist in operation).

On a closed-course drag strip, line lock lets you lock the front wheels to enable the rear wheels to spin, warming the tires for maximum grip.

Camaro 2SS Coupe in Satin Steel Metallic with available 1LE Track Performance Package and other available features.

Available 6.2L supercharged V8 engine on ZL1.

Available dual-mode exhaust.

Available RECARO® performance seats with Jet Black leather appointments and sueded microfiber inserts (ZL1 shown).

Available Performance Data Recorder lets you record lap times and log videos of your drives.



## ACCESSORIES



Front Six-Piston Brembo®  
Brake Upgrade System in Red  
from Chevrolet Accessories.



Black Lower Grille with  
Red Hot-Painted Inserts available  
from Chevrolet Accessories.



ZL1 Car Cover available from  
Chevrolet Accessories.



Second Generation Ground Effects in  
Carbon Flash and Hood Stripe in Satin  
Black with Silver Ice Metallic Hash Mark  
available from Chevrolet Accessories.

## WHEELS & BRAKE CALIPERS



Standard on 1LS Coupe  
5-Spoke Silver-Painted Aluminum  
18" x 8.5" Front and Rear



Standard on LT  
5-Spoke Silver-Painted Aluminum  
18" x 8.5" Front and Rear



Standard on LT1 and SS  
5-Spoke Bright Silver-Painted Aluminum  
20" x 8.5" Front and Rear – LT1  
20" x 8.5" Front and 20" x 9.5" Rear – SS  
(SS paired with summer-only tires<sup>1</sup>)



Available on LT, LT1 and SS  
5-Spoke Carbon  
Flash-Painted Aluminum  
20" x 8.5" Front and Rear – LT/LT1  
20" x 8.5" Front and 20" x 9.5" Rear – SS  
(SS paired with summer-only tires<sup>1</sup>)



Available on LT, LT1 and SS  
5-Spoke Split-Spoke Bright  
Silver-Painted Aluminum  
20" x 8.5" Front and Rear – LT/LT1  
20" x 8.5" Front and 20" x 9.5" Rear – SS  
(SS paired with summer-only tires<sup>1</sup>)



Available on LT, LT1 and SS  
5-Spoke Split-Spoke Premium Gray-Painted  
Machined-Face Aluminum  
20" x 8.5" Front and Rear – LT/LT1  
20" x 8.5" Front and 20" x 9.5" Rear – SS  
(SS paired with summer-only tires<sup>1</sup>)



Available on LT, LT1 and SS  
5-Spoke Split-Spoke Polished Forged-  
Aluminum with Black Star Center Cap  
20" x 8.5" Front and Rear – LT/LT1  
20" x 8.5" Front and 20" x 9.5" Rear – SS  
(SS paired with summer-only tires<sup>1</sup>)



Available on LT, LT1<sup>3</sup> and SS<sup>4</sup>  
5-Spoke Split-Spoke Polished Forged-  
Aluminum with Camaro Logo Center Cap  
20" x 8.5" Front and Rear – LT/LT1  
20" x 8.5" Front and 20" x 9.5" Rear – SS  
(SS paired with summer-only tires<sup>1</sup>)



Available on LT, LT1 and SS  
Caliente Aluminum  
20" x 8.5" Front and Rear – LT/LT1  
20" x 8.5" Front and 20" x 9.5" Rear – SS  
(SS paired with summer-only tires<sup>1</sup>)



Available on LT<sup>5</sup> and SS<sup>6</sup>  
Blade-Design Aluminum  
20" x 8.5" Front and Rear – LT  
20" x 8.5" Front and 20" x 9.5" Rear – SS  
(SS paired with summer-only tires<sup>1</sup>)



Available on LT, LT1<sup>7</sup> and SS<sup>8</sup>  
Black-Painted Aluminum with Red Accents  
20" x 8.5" Front and Rear – LT/LT1  
20" x 8.5" Front and 20" x 9.5" Rear – SS  
(SS paired with summer-only tires<sup>1</sup>)



Available on LT<sup>9</sup> with 1LE  
5-Spoke Split-Spoke Low-Gloss  
Black-Painted Forged-Aluminum  
20" x 8.5" Front and 20" x 9.5" Rear  
(paired with summer-only tires<sup>1</sup>)



Available on SS<sup>10</sup> with 1LE  
5-Spoke Split-Spoke Satin Graphite  
Forged-Aluminum  
20" x 10" Front and 20" x 11" Rear  
(paired with summer-only tires<sup>1</sup>)



Standard on ZL1  
10-Spoke Dark Graphite-Painted  
Forged-Aluminum  
20" x 10" Front and 20" x 11" Rear  
(paired with summer-only tires<sup>1</sup>)



Available on ZL1<sup>11</sup> with 1LE  
5-Spoke Split-Spoke Low-Gloss  
Black-Painted Forged-Aluminum  
19" x 11" Front and 19" x 12" Rear  
(paired with summer-only tires<sup>1</sup>)



Black-Painted Brembo<sup>®</sup> Brake Calipers<sup>12</sup>



Silver-Painted Brembo Brake Calipers<sup>13</sup>



Orange-Painted Brembo Brake Calipers<sup>14</sup>



Red-Painted Brembo Brake Calipers<sup>14</sup>

<sup>1</sup> Do not use summer-only tires in winter conditions, as it would adversely affect vehicle safety, performance and durability. Use only GM-approved tire and wheel combinations. Unapproved combinations may change the vehicle's performance characteristics. For important tire and wheel information, go to [my.chevrolet.com/learnAbout/chevrolettires](http://my.chevrolet.com/learnAbout/chevrolettires) or see your dealer. <sup>2</sup> Available on LT with RS Package. <sup>3</sup> Available on LT and LT1 with Wild Cherry Design Package and requires available RS Package. <sup>4</sup> Available on SS with Wild Cherry Design Package. <sup>5</sup> Available on 2LT and 3LT with Shock and Steel Special Edition. <sup>6</sup> Available on 2SS with Shock and Steel Special Edition. <sup>7</sup> Available on LT and LT1 with Redline Edition and requires available RS Package. <sup>8</sup> Available on SS with Redline Edition. <sup>9</sup> Available on LT with 1LE Track Performance Package. <sup>10</sup> Available on SS with SS 1LE Track Performance Package. <sup>11</sup> Available on ZL1 with ZL1 1LE Extreme Track Performance Package. <sup>12</sup> Standard on LT1 and SS. Available on LT with Heavy-Duty Cooling and Brake Package or 1LE Track Performance Package. <sup>13</sup> Standard on ZL1. <sup>14</sup> Available on LT, LT1 and SS.

## EXTERIOR COLORS



Summit White



Satin Steel Metallic



Shadow Gray Metallic



Red Hot



Wild Cherry Tintcoat<sup>1</sup>



Crush<sup>1</sup>



Shock<sup>1</sup>



Riverside Blue Metallic



Black

## STRIPES

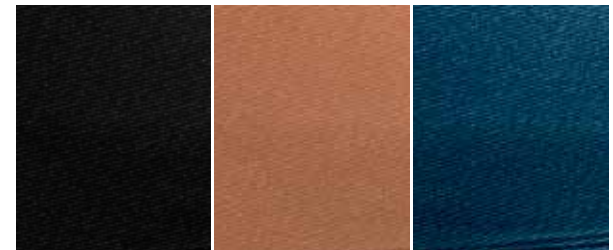


Center Stripe in White Pearl<sup>2</sup>



Rally Stripes in White Pearl<sup>2,3</sup>

## CONVERTIBLE TOP COLORS Available on LT, SS and ZL1.



Black

Kalahari<sup>3</sup>

Blue<sup>3</sup>

<sup>1</sup> Extra-cost color. <sup>2</sup> Additional color availability includes Silver, Black and Black Metallic. See dealer for details. <sup>3</sup> Not available on ZL1.



## MODELS



**1LS AND 1LT** Camaro 1LS Coupe (shown) and 1LT Coupe and Convertible include these features:

### MECHANICAL

Brakes – 4-wheel antilock, 4-wheel disc; electronic parking brake

Differential – limited-slip

Driver Mode Selector – three modes: Snow/Ice, Tour and Sport

Engine – 2.0L turbocharged 4-cylinder with Variable Valve Timing and Direct Injection

Exhaust system – dual-outlet with bright tips

StabiliTrak® – Electronic Stability Control System with Traction Control

Steering – rack-and-pinion, power variable-ratio

Suspension – 4-wheel independent, Sport (FE2)

Transmission – 6-speed manual

### EXTERIOR

Daytime running lamps – LED

Headlamps – LED with LED signature, automatic on/off with automatic delay

Mirrors – power-adjustable, manual-folding with body-color caps

Taillamps – LED

Tires – 245/50R18 all-season blackwall

Wheels – 18" x 8.5" front and rear 5-split-spoke Silver-painted aluminum (1LS)

Wheels – 18" x 8.5" front and rear 5-spoke Silver-painted aluminum (1LT)

Wipers – front variable-speed, intermittent with washers

### INTERIOR

Air conditioning – automatic, single-zone

Audio – 6-speaker system

Cruise control – electronic with Set and Resume Speed

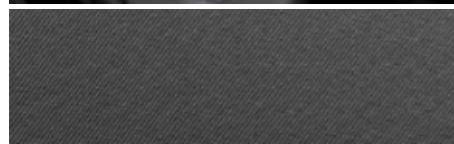
Door locks – power programmable with lockout protection



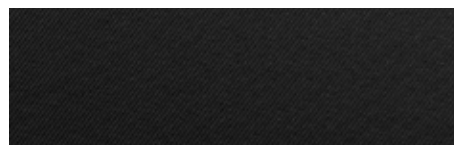
Medium Ash Gray Cloth (shown)



RECARO® Performance Seats with Jet Black Leather Appointments and Sueded Microfiber Inserts (1LT only)



Jet Black Cloth



### INTERIOR (CONTINUED)

Driver Information Center – color display with compass

Entertainment – Chevrolet Infotainment 3 system<sup>1</sup> with 7-inch diagonal color touch-screen, AM/FM stereo, Bluetooth® audio streaming<sup>2</sup> for two active devices, voice command pass-through to compatible phone, and wireless Apple CarPlay<sup>®3</sup> and Android Auto<sup>™4</sup> compatibility

Keyless Open and Start – includes extended-range Remote Keyless Entry

Media – two USB ports<sup>5</sup> and auxiliary input jack

Rear Vision Camera<sup>6</sup>

Seat – front passenger 6-way power adjuster (1LT)

Seats – front sport buckets with driver 8-way power adjuster; front passenger 4-way manual adjuster with power recline (1LS); folding rear (Coupe)

SiriusXM<sup>®7</sup> – All Access Package with 12-month trial subscription (1LT)

Steering column – manual tilt and telescopic

Steering wheel – leather-wrapped flat-bottom with mounted audio, cruise and phone controls

Theft-deterrent system – unauthorized entry

Tire Pressure Monitoring System – with Tire Fill Alert

Windows – power with driver and front passenger express-up/-down

<sup>1</sup> Chevrolet Infotainment System functionality varies by model. Full functionality requires compatible Bluetooth and smartphone, and USB connectivity for some devices. <sup>2</sup> Go to [my.chevrolet.com/learnAbout/bluetooth](http://my.chevrolet.com/learnAbout/bluetooth) to find out which phones are compatible with the vehicle. Full Bluetooth feature functionality varies by device, model and software version. <sup>3</sup> Vehicle user interface is a product of Apple and its terms and privacy statements apply. Requires compatible iPhone and data plan rates apply. <sup>4</sup> Vehicle user interface is a product of Google and its terms and privacy statements apply. Requires the Android Auto app on Google Play and a compatible Android smartphone. Data plan rates apply. You can check which smartphones are compatible at [g.co/androidauto/requirements](http://g.co/androidauto/requirements). <sup>5</sup> Not compatible with all devices. <sup>6</sup> Read the vehicle Owner's Manual for important feature limitations and information. <sup>7</sup> If you decide to continue service after your trial, the subscription plan you choose will automatically renew thereafter and you will be charged according to your chosen payment method at then-current rates. Fees and taxes apply. See the SiriusXM Customer Agreement at [siriusxm.com](http://siriusxm.com) for complete terms and how to cancel. All fees, content, features and availability are subject to change.

## MODELS (CONTINUED)



**2LT** In addition to or replacing 1LS and 1LT features, 2LT includes:

### INTERIOR

Air conditioning – automatic, dual-zone with individual climate settings and outside temperature display

Seats – heated and ventilated leather-appointed driver and front passenger

**3LT** In addition to or replacing 2LT features, 3LT includes:

### EXTERIOR

Mirrors – heated, power-adjustable with driver-side auto-dimming feature, manual-folding with body-color caps

### INTERIOR

Accents – aluminum accents on door trim and shifter cap

Audio – Bose premium 9-speaker (Coupe) or 7-speaker (Convertible) system

Driver Information Center – enhanced 8-inch diagonal reconfigurable multi-color display

Entertainment – Chevrolet Infotainment 3 Plus system<sup>1</sup> with 8-inch diagonal HD color touch-screen, AM/FM stereo, Bluetooth<sup>®</sup> audio streaming<sup>2</sup> for two active devices, wireless Apple CarPlay<sup>®3</sup> and wireless Android Auto<sup>™4</sup> compatibility, available Alexa Built-In<sup>5</sup>; voice recognition and In-Vehicle Apps<sup>6</sup>

Forward Collision Alert<sup>7</sup> (Coupe)

HD Rear Vision Camera<sup>7</sup>

Head-Up Display – color digital display with readouts for vehicle speed, tachometer, selected gear, g force, high beam indicator, turn signals, outside air temperature, audio system, turn-by-turn directions and phone information

Lane Change Alert with Side Blind Zone Alert<sup>7</sup>

Memory – recalls two presets for power driver seat and outside rearview mirrors

Rear Camera Mirror<sup>7</sup>

Rear Cross Traffic Alert<sup>7</sup>; Rear Park Assist<sup>7</sup>

Sill plates – illuminated

SiriusXM<sup>®</sup> with 360L<sup>®</sup> – All Access Package with 12-month trial subscription

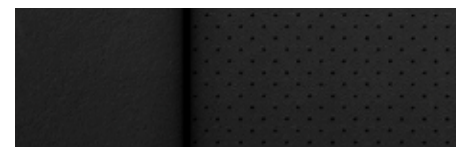
Steering wheel – heated



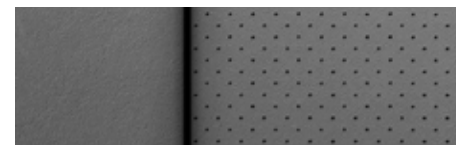
Ceramic White Leather-Appointed Seating Surfaces (3LT shown)<sup>9</sup>



RECARO<sup>®</sup> Performance Seats with Jet Black Leather Appointments and Sueded Microfiber Inserts



Jet Black Leather-Appointed Seating Surfaces



Medium Ash Gray Leather-Appointed Seating Surfaces



Kalahari Leather-Appointed Seating Surfaces



Adrenaline Red Leather-Appointed Seating Surfaces<sup>10</sup>

<sup>1</sup> Chevrolet Infotainment System functionality varies by model. Full functionality requires compatible Bluetooth and smartphone, and USB connectivity for some devices. <sup>2</sup> Go to [my.chevrolet.com/learnAbout/bluetooth](http://my.chevrolet.com/learnAbout/bluetooth) to find out which phones are compatible with the vehicle. Full Bluetooth feature functionality varies by device, model and software version. <sup>3</sup> Vehicle user interface is a product of Apple and its terms and privacy statements apply. Requires compatible iPhone and data plan rates apply. <sup>4</sup> Vehicle user interface is a product of Google and its terms and privacy statements apply. Requires the Android Auto app on Google Play and a compatible Android smartphone. Data plan rates apply. You can check which smartphones are compatible at [g.co/androidauto/requirements](http://g.co/androidauto/requirements). <sup>5</sup> Functionality is subject to limitations and varies by vehicle, infotainment system and location. Select service plan required. Certain Alexa Skills require account linking to use. Visit [onstar.com](http://onstar.com) for additional details. <sup>6</sup> Requires active service and paid AT&T vehicle data plan or compatible device with 3G/4G LTE tethering data plan. Visit [onstar.com](http://onstar.com) for details and limitations. <sup>7</sup> Read the vehicle Owner's Manual for important feature limitations and information. <sup>8</sup> If you decide to continue service after your trial, the subscription plan you choose will automatically renew thereafter and you will be charged according to your chosen payment method at then-current rates. Fees and taxes apply. See the SiriusXM Customer Agreement at [siriusxm.com](http://siriusxm.com) for complete terms and how to cancel. All fees, content, features and availability are subject to change. Certain features require a SiriusXM subscription and the Chevrolet Connected Access plan. See [siriusxm.com](http://siriusxm.com) and [onstar.com](http://onstar.com) for details and limitations. <sup>9</sup> Requires available Ceramic White Interior Package. <sup>10</sup> Requires available Adrenaline Red Interior Package.

## MODELS (CONTINUED)



**LT1** In addition to or replacing 1LS and 1LT features, LT1 includes:

### MECHANICAL

**Brakes** – 4-wheel antilock, 4-wheel disc with Brembo® 4-piston front calipers; electronic parking brake

**Cooling** – external engine oil cooler

**Engine** – 6.2L LT1 V8 with Variable Valve Timing and Direct Injection

**Suspension** – 4-wheel independent, performance (FE3)

**Transmission** – 6-speed manual with Active Rev Matching

### EXTERIOR

**Badging** – LT1 insignia on front fenders

**Chevrolet bowtie emblems** – Black

**Engine hood** – SS-style with functional air extractor

**Tires** – 245/40R20 all-season blackwall, run-flat

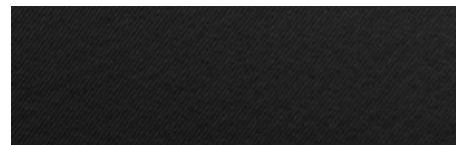
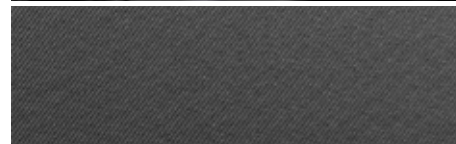
**Wheels** – 20" x 8.5" front and rear 5-spoke Silver-painted aluminum



Medium Ash Gray Cloth (shown)



RECARO® Performance Seats with Jet Black Leather Appointments and Sueded Microfiber Inserts



Jet Black Cloth

## MODELS (CONTINUED)



**1SS** In addition to or replacing LT1 features, 1SS includes:

### MECHANICAL

**Brakes** – 4-wheel antilock, 4-wheel disc with Brembo® 4-piston front and rear calipers; electronic parking brake

**Cooling** – extra-capacity cooling system and transmission oil cooler (requires available automatic transmission on Convertible)

**Cooling** – auxiliary engine coolant cooler and rear differential oil cooler (Coupe)

**Driver Mode Selector** – four modes: Snow/Ice, Tour, Sport and Track

### EXTERIOR

**Antenna** – fin-type, body-color

**Spoiler** – rear, stanchion

**Taillamps** – dark-tinted

**Tires** – 245/40ZR20 front and 275/35ZR20 rear summer-only<sup>1</sup> blackwall, run-flat

**Wheels** – 20" x 8.5" front and 20" x 9.5" rear 5-spoke Bright Silver-painted aluminum

### INTERIOR

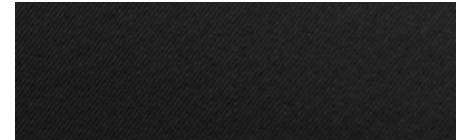
**Driver Information Center** – enhanced 8-inch diagonal reconfigurable multi-color display with compass

**Entertainment** – Chevrolet Infotainment 3 Plus system<sup>2</sup> with 8-inch diagonal HD color touch-screen, AM/FM stereo, Bluetooth® audio streaming<sup>3</sup> for two active devices, wireless Apple CarPlay®<sup>4</sup> and wireless Android Auto™<sup>5</sup> compatibility, available Alexa Built-In<sup>6</sup> voice recognition and In-Vehicle Apps<sup>7</sup>

**HD Rear Vision Camera**<sup>8</sup>

**SiriusXM® with 360L**<sup>9</sup> – All Access Package with 12-month trial subscription

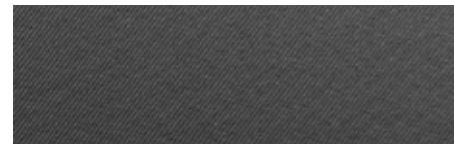
**Visors** – driver and front passenger, covered illuminated vanity mirrors (Coupe)



Jet Black Cloth (shown)



RECARO® Performance Seats with Jet Black Leather Appointments and Sueded Microfiber Inserts



Medium Ash Gray Cloth

<sup>1</sup> Do not use summer-only tires in winter conditions, as it would adversely affect vehicle safety, performance and durability. Use only GM-approved tire and wheel combinations. Unapproved combinations may change the vehicle's performance characteristics. For important tire and wheel information, go to [my.chevrolet.com/learnAbout/chevrolettires](http://my.chevrolet.com/learnAbout/chevrolettires) or see your dealer. <sup>2</sup> Chevrolet Infotainment System functionality varies by model. Full functionality requires compatible Bluetooth and smartphone, and USB connectivity for some devices. <sup>3</sup> Go to [my.chevrolet.com/learnAbout/bluetooth](http://my.chevrolet.com/learnAbout/bluetooth) to find out which phones are compatible with the vehicle. Full Bluetooth feature functionality varies by device, model and software version. <sup>4</sup> Vehicle user interface is a product of Apple and its terms and privacy statements apply. Requires compatible iPhone and data plan rates apply. <sup>5</sup> Vehicle user interface is a product of Google and its terms and privacy statements apply. Requires the Android Auto app on Google Play and a compatible Android smartphone. Data plan rates apply. You can check which smartphones are compatible at [g.co/androidauto/requirements](http://g.co/androidauto/requirements). <sup>6</sup> Functionality is subject to limitations and varies by vehicle, infotainment system and location. Select service plan required. Certain Alexa Skills require account linking to use. Visit [onstar.com](http://onstar.com) for additional details. <sup>7</sup> Requires active service and paid AT&T vehicle data plan or compatible device with 3G/4G LTE tethering data plan. Visit [onstar.com](http://onstar.com) for details and limitations. <sup>8</sup> Read the vehicle Owner's Manual for important feature limitations and information. <sup>9</sup> If you decide to continue service after your trial, the subscription plan you choose will automatically renew thereafter and you will be charged according to your chosen payment method at then-current rates. Fees and taxes apply. See the SiriusXM Customer Agreement at [siriusxm.com](http://siriusxm.com) for complete terms and how to cancel. All fees, content, features and availability are subject to change. Certain features require a SiriusXM subscription and the Chevrolet Connected Access plan. See [siriusxm.com](http://siriusxm.com) and [onstar.com](http://onstar.com) for details and limitations.

## MODELS (CONTINUED)



**2SS** In addition to or replacing 1SS features, 2SS includes:

### EXTERIOR

**Mirrors** – heated, power-adjustable with driver-side auto-dimming feature, manual-folding with body-color caps

### INTERIOR

**Accents** – aluminum accents on door trim and shifter cap

**Air conditioning** – automatic, dual-zone with individual climate settings for driver and front passenger and outside temperature display

**Audio** – Bose premium 9-speaker (Coupe) or 7-speaker (Convertible) system

**Forward Collision Alert<sup>1</sup>** (Coupe)

**Head-Up Display** – color digital display with readouts for vehicle speed, tachometer, selected gear, g force, high beam indicator, turn signals, outside air temperature, audio system, turn-by-turn directions and phone information

**Lane Change Alert with Side Blind Zone Alert<sup>1</sup>**

**Lighting** – interior spectrum with 24 different color selections

**Memory** – recalls two presets for power driver seat and outside rearview mirrors

**Rear Camera Mirror<sup>1</sup>**

**Rear Cross Traffic Alert<sup>1</sup>**

**Rear Park Assist<sup>1</sup>**

**Seats** – heated and ventilated leather-appointed driver and front passenger

**Sill plates** – illuminated

**Steering wheel** – heated

**Wireless charging<sup>2</sup>**



Adrenaline Red Leather-Appointed Seating Surfaces (shown)<sup>3</sup>



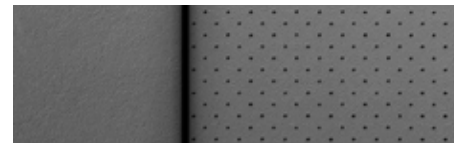
RECARO® Performance Seats with Jet Black Leather Appointments and Sueded Microfiber Inserts



Jet Black Leather-Appointed Seating Surfaces



Medium Ash Gray Leather-Appointed Seating Surfaces



Kalahari Leather-Appointed Seating Surfaces



Ceramic White Leather-Appointed Seating Surfaces<sup>4</sup>



<sup>1</sup> Read the vehicle Owner's Manual for important feature limitations and information. <sup>2</sup> The system wirelessly charges one compatible mobile device. Some phones have built-in wireless charging technology and others require a special adaptor/back cover. To check for phone or other device compatibility, see [my.chevrolet.com/learn](http://my.chevrolet.com/learn) or consult your carrier. <sup>3</sup> Requires available Adrenaline Red Interior Package. <sup>4</sup> Requires available Ceramic White Interior Package.

## MODELS (CONTINUED)



RECARO Performance Seats with Jet Black Leather Appointments and Red Accents and Sueded Microfiber Inserts

**ZL1** In addition to or replacing 2SS features, ZL1 includes:

### MECHANICAL

**Brakes** – 4-wheel antilock, 4-wheel disc with Brembo® 6-piston monobloc front and 4-piston rear calipers; electronic parking brake

**Differential** – electronic Limited-Slip (eLSD) (Coupe)

**Engine** – 6.2L LT4 supercharged V8 with Variable Valve Timing and Direct Injection

**Exhaust system** – dual-mode performance with quad outlets

**Launch control** – custom

**Suspension** – 4-wheel independent, performance (FE4); Magnetic Ride Control

### EXTERIOR

**Spoiler** – rear, Sport (Coupe)

**Tires** – 285/30ZR20 front and 305/30ZR20 rear summer-only<sup>1</sup> blackwall

**Wheels** – 20" x 10" front and 20" x 11" rear 10-split-spoke Dark Graphite-painted forged-aluminum

### INTERIOR

**Pedals** – Sport alloy

**Seats** – RECARO® performance seats with Jet Black leather appointments and Red accents and sueded microfiber inserts

**Shifter** – sueded microfiber-wrapped

**Steering wheel** – sueded microfiber-wrapped flat-bottom

<sup>1</sup> Do not use summer-only tires in winter conditions, as it would adversely affect vehicle safety, performance and durability. Use only GM-approved tire and wheel combinations. Unapproved combinations may change the vehicle's performance characteristics. For important tire and wheel information, go to [my.chevrolet.com/learnAbout/chevroleettires](http://my.chevrolet.com/learnAbout/chevroleettires) or see your dealer.

## PERFORMANCE

	CAMARO LS/LT/ TURBO 1LE	CAMARO LT/V6 1LE	CAMARO LT1/SS/SS 1LE	CAMARO ZL1	CAMARO ZL1 1LE EXTREME TRACK PACKAGE
Engine	2.0L turbocharged 4-cylinder	3.6L V6	6.2L LT1 V8	6.2L LT4 supercharged V8	6.2L LT4 supercharged V8
Bore and Stroke	86.00 mm x 86.00 mm	95.00 mm x 85.60 mm	103.25 mm x 92.00 mm	103.25 mm x 92.00 mm	103.25 mm x 92.00 mm
Compression Ratio	9.5:1	11.5:1	11.5:1	10.0:1	10.0:1
Horsepower	275 hp @ 5600 rpm	335 hp @ 6800 rpm	455 hp @ 6000 rpm	650 hp @ 6400 rpm	650 hp @ 6400 rpm
Torque	295 lb.-ft. @ 3000-4500 rpm	284 lb.-ft. @ 5300 rpm	455 lb.-ft. @ 4400 rpm	650 lb.-ft. @ 3600 rpm	650 lb.-ft. @ 3600 rpm
Redline	7000 rpm	7200 rpm	6500 rpm	6600 rpm	6600 rpm
Axle Ratio	3.27:1 (manual) 3.27:1 (automatic)	3.27:1 (manual) 2.77:1 (automatic)	3.73:1 (manual and SS 1LE) 2.77:1 (automatic)	3.73:1 (manual) 2.85:1 (automatic Coupe) 2.77:1 (automatic Convertible)	3.73:1
0 to 60 (Based on initial vehicle movement)	5.4 seconds (manual Coupe and Turbo 1LE) 5.5 seconds (automatic Coupe)	5.2 seconds (manual Coupe and V6 1LE) 5.4 seconds (automatic Coupe)	4.3 seconds (manual SS Coupe) 4.0 seconds (automatic SS Coupe) 4.3 seconds (manual LT1 Coupe) 4.2 seconds (automatic LT1 Coupe)	3.7 seconds (manual Coupe) 3.5 seconds (automatic Coupe)	3.7 seconds (manual Coupe) 3.5 seconds (automatic Coupe)
Quarter Mile	14.0 seconds @ 100 mph (manual Coupe and Turbo 1LE) 14.0 seconds @ 99 mph (automatic Coupe)	13.7 seconds @ 102 mph (manual Coupe and V6 1LE) 13.7 seconds @ 105 mph (automatic Coupe)	12.5 seconds @ 115 mph (manual SS Coupe and SS 1LE) 12.3 seconds @ 116 mph (automatic SS Coupe) 12.5 seconds @ 116 mph (manual LT1 Coupe) 12.3 seconds @ 118 mph (automatic LT1 Coupe)	11.8 seconds @ 125 mph (manual Coupe) 11.4 seconds @ 127 mph (automatic Coupe)	11.8 seconds @ 125 mph
Skid Pad (Maximum lateral acceleration)	0.85 g 0.97 g (Turbo 1LE)	0.89 g 0.97 g (V6 1LE)	0.97 g (SS Coupe) 1.02 g (SS 1LE)	1.02 g (Coupe) 1.00 g (Convertible)	1.10 g
Top Track Speed	149 mph 148 mph (Turbo 1LE)	149 mph 155 mph (V6 1LE)	180 mph (SS Coupe) 175 mph (SS 1LE) 149 mph (LT1)	198 mph (automatic Coupe)	191 mph
Braking System	4-wheel antilock, 4-wheel disc Brembo® 4-piston front, performance (available)	4-wheel antilock, 4-wheel disc Brembo 4-piston front, performance (available)	4-wheel antilock, 4-wheel disc, Brembo 4-piston front, performance (LT1) 4-wheel antilock, 4-wheel disc, Brembo 4-piston front and rear, performance (SS) 4-wheel antilock, 4-wheel disc, Brembo 6-piston monobloc front and 4-piston rear, performance (SS 1LE)	4-wheel antilock, 4-wheel disc, Brembo 6-piston monobloc front and 4-piston rear, performance	4-wheel antilock, 4-wheel disc, Brembo 6-piston monobloc front and 4-piston rear, performance
Braking Distance (60 to 0 mph)	129 ft.	124 ft. (Coupe with available RS Package) 112 ft. (V6 1LE)	117 ft. (SS Coupe) 107 ft. (SS 1LE)	107 ft. (Coupe) 110 ft. (Convertible)	101 ft.
Curb Weight	3,351 lbs. (manual Coupe) 3,332 lbs. (automatic Coupe) 3,627 lbs. (manual Convertible) 3,607 lbs. (automatic Convertible) 3,393 lbs. (Turbo 1LE)	3,411 lbs. (manual Coupe) 3,418 lbs. (automatic Coupe) 3,684 lbs. (manual Convertible) 3,691 lbs. (automatic Convertible) 3,438 lbs. (V6 1LE)	3,619 lbs. (manual LT1 Coupe) 3,681 lbs. (automatic LT1 Coupe) 3,865 lbs. (manual LT1 Convertible) 3,927 lbs. (automatic LT1 Convertible) 3,696 lbs. (manual 2SS Coupe) 3,757 lbs. (automatic 2SS Coupe) 3,937 lbs. (manual 2SS Convertible) 3,999 lbs. (automatic 2SS Convertible) 3,762 lbs. (2SS 1LE)	3,907 lbs. (manual Coupe) 3,938 lbs. (automatic Coupe) 4,120 lbs. (manual Convertible) 4,151 lbs. (automatic Convertible)	3,853 lbs. (manual) 3,883 lbs. (automatic)
Tires	245/50R18 all-season blackwall 245/40R20 all-season blackwall, run-flat (available LT) 245/40ZR20 front and 275/35ZR20 rear, summer-only <sup>1</sup> blackwall, run-flat (Turbo 1LE)	245/50R18 all-season blackwall 245/40R20 all-season blackwall, run-flat (available) 245/40ZR20 front and 275/35ZR20 rear, summer-only <sup>1</sup> blackwall, run-flat (V6 1LE)	245/40R20 all-season blackwall, run-flat (LT1) 245/40ZR20 front and 275/35ZR20 rear, summer-only <sup>1</sup> blackwall, run-flat (SS) 285/30R20 front and 305/30R20 rear, summer-only <sup>1</sup> blackwall (SS 1LE)	285/30R20 front and 305/30R20 rear, summer-only <sup>1</sup> blackwall	Goodyear Eagle® F1 SuperCar® 3R 305/30R19 front and 325/30R19 rear, summer-only <sup>1,2</sup> blackwall
Weight Distribution (F/R)	52/48	52/48	54/46 (LT1, SS, SS 1LE)	54/46	54/46

<sup>1</sup> Do not use summer-only tires in winter conditions, as it would adversely affect vehicle safety, performance and durability. Use only GM-approved tire and wheel combinations. Unapproved combinations may change the vehicle's performance characteristics. For important tire and wheel information, go to [my.chevrolet.com/learnAbout/chevrolettires](http://my.chevrolet.com/learnAbout/chevrolettires) or see your dealer. <sup>2</sup> Driving on wet roads, in heavy rain, or through standing water with competition-oriented tires may cause hydroplaning and loss of control. Use extreme caution and drive slowly on wet roads.

## SPECIFICATIONS

● STANDARD ○ AVAILABLE – NOT AVAILABLE

	1LS	1LT	2LT	3LT	LT1	1SS	2SS	ZL1
<b>EXTERIOR</b>								
Antenna: Fin-type, Black	●	●	●	●	●	–	–	–
Fin-type, body-color (requires available RS Package on 1LT, 2LT and LT1)	–	○	○	●	○	●	●	●
Chevrolet bowtie emblems: Gold (front and rear)	●	●	●	●	–	–	–	–
Black (front and rear)	○	○	○	○	○	●	●	●
Emblem, front fender: Camaro insignia badge	●	●	●	●	–	●	●	–
LT1 badge	–	–	–	–	●	–	–	–
Camaro nameplate badge	○	○	○	○	–	○	○	–
Black Camaro nameplate badge with Red outline (requires available Redline Edition)	–	○	○	○	○	○	○	–
Fuel filler: Capless fueling	●	●	●	●	●	●	●	●
Headlamps: LED with LED signature, automatic on/off with automatic delay	●	●	●	●	●	●	●	●
Hood insert: Visible carbon-fiber weave	–	–	–	–	–	–	–	○
Spoiler: Rear, lip, decklid-mounted	○	○	○	○	○	○ <sup>1</sup>	○ <sup>1</sup>	–
Rear, blade, Satin Black (requires available 1LE Track Performance Package)	–	○ <sup>2</sup>	○ <sup>2</sup>	○ <sup>2</sup>	–	○ <sup>2</sup>	○ <sup>2</sup>	–
Rear, stanchion	–	● <sup>3</sup>	● <sup>3</sup>	● <sup>3</sup>	● <sup>3</sup>	●	●	● <sup>3</sup>
Rear, Sport	–	–	–	–	–	–	–	● <sup>2</sup>
Rear, wing, visible carbon-fiber weave (requires available ZL1 1LE Extreme Track Performance Package)	–	–	–	–	–	–	–	○ <sup>2</sup>
Taillamps: Dark-tinted (requires available RS Package on LT1)	○	○	○	○	○	●	●	●
<b>GRAPHICS</b>								
1LE Hash Mark Decal (requires available 1LE Track Performance Package)	–	○ <sup>2</sup>	○ <sup>2</sup>	○ <sup>2</sup>	–	○ <sup>2</sup>	○ <sup>2</sup>	–
Black Metallic Hash Mark Stripes (requires available Wild Cherry Design Package 1)	–	○	○	○	○	○	○	–
Black Center Stripe (not available with Black exterior color)	○	○	○	○	–	–	–	–
Black Metallic Center Stripe	–	–	–	–	○	○	○	○ <sup>4</sup>
Silver Center Stripe	○	○	○	○	○	○	○	–
White Pearl Center Stripe (not available with Summit White exterior color)	○	○	○	○	○	○	○	–
Black Rally Stripes (not available with Black exterior color)	○	○	○	○	–	–	–	–
Black Metallic Rally Stripes	–	–	–	–	○	○	○	–
Silver Rally Stripes	○	○	○	○	○	○	○	–
White Pearl Rally Stripes (not available with Summit White exterior color)	○	○	○	○	○	○	○	–

	1LS	1LT	2LT	3LT	LT1	1SS	2SS	ZL1
<b>ENGINE/CHASSIS</b>								
Brakes: 4-wheel antilock disc	●	●	●	●	●	●	●	●
Brembo® 4-piston front calipers, performance (requires available Heavy-Duty Cooling and Brake Package or 1LE Track Performance Package on LT Coupe; requires available Red- or Orange-painted brake calipers on LT)	–	○	○	○	●	–	–	–
Brembo 4-piston front and rear calipers, performance	–	–	–	–	–	●	●	–
Brembo 6-piston monobloc front calipers and 4-piston rear calipers, performance (requires available SS 1LE Track Performance Package on SS)	–	–	–	–	–	○	○	●
Orange-painted brake calipers (includes Brembo 4-piston front calipers on LT)	–	○	○	○	○	○	○	–
Red-painted brake calipers (includes Brembo 4-piston front calipers on LT)	–	○	○	○	○	○	○	–
Differential: Limited-slip	●	●	●	●	●	●	●	–
Electronic Limited-Slip (eLSD) (requires available SS 1LE Track Performance Package on SS)	–	–	–	–	–	○ <sup>2</sup>	○ <sup>2</sup>	● <sup>2</sup>
Cooler (requires available 1LE Track Performance Package on LT)	–	○ <sup>2</sup>	○ <sup>2</sup>	○ <sup>2</sup>	–	● <sup>2</sup>	● <sup>2</sup>	●
Engine: 2.0L turbocharged 4-cylinder; 275 hp and 295 lb.-ft. of torque	●	●	●	●	–	–	–	–
3.6L V6; 335 hp and 284 lb.-ft. of torque	–	○	○	○	–	–	–	–
6.2L LT1 V8; 455 hp and 455 lb.-ft. of torque	–	–	–	–	●	●	●	–
6.2L LT4 supercharged V8; 650 hp and 650 lb.-ft. of torque	–	–	–	–	–	–	–	●
Air filter life monitor	●	●	●	●	–	–	–	–
Auxiliary engine cooling system (requires available 1LE Track Performance Package and 3.6L V6 engine on LT)	–	○ <sup>2</sup>	○ <sup>2</sup>	○ <sup>2</sup>	–	● <sup>2</sup>	● <sup>2</sup>	●
Extra-capacity cooling system (requires available Heavy-Duty Cooling and Brake Package with automatic transmission or available 1LE Track Performance Package on LT)	–	○ <sup>2</sup>	○ <sup>2</sup>	○ <sup>2</sup>	–	●	●	●
External engine oil cooler (requires available 1LE Track Performance Package or Heavy-Duty Cooling and Brake Package on LT)	–	○ <sup>2</sup>	○ <sup>2</sup>	○ <sup>2</sup>	●	●	●	●
Exhaust system: Dual-outlet stainless steel with polished tips	●	●	●	●	●	●	●	–
Dual-mode performance with quad outlets (requires available 3.6L V6 engine on LT)	–	○	○	○	○	○	○	●
Launch control: Custom (requires available automatic transmission on SS)	–	–	–	–	–	○	○	●
Suspension: 4-wheel independent, Sport (FE2)	●	●	●	●	–	–	–	–
Performance (FE3) (requires available 1LE Track Performance Package on LT)	–	○ <sup>2</sup>	○ <sup>2</sup>	○ <sup>2</sup>	●	●	●	–
Performance (FE4) (requires available SS 1LE Track Performance Package on SS)	–	–	–	–	–	○ <sup>2</sup>	○ <sup>2</sup>	●
Performance with Multimatic DSSV™ (Dynamic Suspensions Spool Valve) dampers (requires available ZL1 1LE Extreme Track Performance Package)	–	–	–	–	–	–	–	○ <sup>2</sup>
Magnetic Ride Control (removed on ZL1 when available ZL1 1LE Extreme Track Performance Package is ordered)	–	–	–	–	–	○	○	●
Transmission: 6-speed manual with Hill Hold feature (includes Active Rev Matching on LT1, SS and ZL1)	●	●	●	●	●	●	●	●
8-speed paddle-shift automatic; includes remote vehicle starter system (requires 2.0L turbocharged engine on LT)	○	○	○	○	–	–	–	–
10-speed paddle-shift automatic; includes remote vehicle starter system (requires available 3.6L V6 engine on LT)	–	○	○	○	○	○	○	○
Transmission oil cooler; included on SS Coupe (requires available 1LE Track Performance Package on LT; requires available automatic transmission on SS Convertible)	–	○ <sup>2</sup>	○ <sup>2</sup>	○ <sup>2</sup>	–	○	○	●

<sup>1</sup> Requires GM Accessory body-color blade spoiler or body-color wing spoiler. <sup>2</sup> Coupe only. <sup>3</sup> Convertible only. <sup>4</sup> Roof, decklid and spoiler on Coupe. Decklid, tonneau cover and spoiler on Convertible.



## SPECIFICATIONS (CONTINUED)

● STANDARD ○ AVAILABLE – NOT AVAILABLE

	1LS	1LT	2LT	3LT	LT1	1SS	2SS	ZL1
<b>SAFETY &amp; SECURITY</b>								
Airbags: <sup>1</sup> Dual-stage frontal and knee for driver and front passenger; seat-mounted side-impact for driver and front passenger (thorax/head for Convertible); head-curtain for all outboard seating positions (Coupe); includes Passenger Sensing System (Coupe/Convertible)	●	●	●	●	●	●	●	●
Forward Collision Alert <sup>2</sup> (removed when available Performance Data Recorder is ordered)	–	–	–	● <sup>3</sup>	–	–	● <sup>3</sup>	● <sup>3</sup>
Lane Change Alert with Side Blind Zone Alert <sup>2</sup>	–	–	–	●	–	–	●	●
LATCH system (Lower Anchors and Tethers for CHildren), for child restraint systems	●	●	●	●	●	●	●	●
Rear Cross Traffic Alert <sup>2</sup>	–	–	–	●	–	–	●	●
Rear Park Assist <sup>2</sup>	–	–	–	●	–	–	●	●
Rear Vision Camera <sup>2</sup>	●	●	●	–	●	–	–	–
HD Rear Vision Camera <sup>2</sup> (requires available Chevrolet Infotainment 3 Plus system <sup>4</sup> on 1LT, 2LT and LT1)	–	○	○	●	○	●	●	●
Teen Driver technology	●	●	●	●	●	●	●	●
Theft-deterrent system: Unauthorized entry	●	●	●	●	●	●	●	●
Tire Pressure Monitoring System: With Tire Fill Alert	●	●	●	●	●	●	●	●
Up to 3 months of OnStar <sup>®</sup> Safety & Security coverage <sup>5</sup>	●	●	●	●	●	●	●	●

	1LS	1LT	2LT	3LT	LT1	1SS	2SS	ZL1
<b>INTERIOR</b>								
Air conditioning: Automatic, single-zone	●	●	–	–	●	●	–	–
Automatic, dual-zone with individual climate settings for driver and front passenger and outside temperature display	–	–	●	●	–	–	●	●
Driver Information Center: Color display with compass	●	●	●	–	●	–	–	–
Enhanced 8-inch diagonal multi-color reconfigurable display with compass	–	–	–	●	–	●	●	●
Floor mats: Carpeted, front	●	●	●	●	●	●	●	●
Head-Up Display: Color digital display with readouts for vehicle speed, tachometer, selected gear, g force, high beam indicator, turn signals, outside air temperature, audio system, turn-by-turn directions and phone information (requires available SS 1LE Track Performance Package on 1SS)	–	–	–	●	–	○	●	●
Interior trim: Carbon-fiber instrument panel molding (requires available Shock and Steel Special Edition on 2LT, 3LT and 2SS)	–	–	○	○	–	–	○	○
Knee pads: Red (not available with Kalahari interior color on 2LT, 3LT and 2SS)	–	○	○	○	○	○	○	○
Lighting: Front reading lamps and interior dome lamp with illuminated entry	●	●	●	●	●	●	●	●
Interior spectrum with 24 different color selections	–	–	–	●	–	–	●	●
Memory settings: Recalls two presets for power driver seat and outside rearview mirrors	–	–	–	●	–	–	●	●
Mirror: Rearview, manual, frameless	●	●	●	–	●	●	–	–
Rear Camera Mirror; <sup>2</sup> auto-dimming with full camera display	–	–	–	●	–	–	●	●
Pedals: Sport alloy	–	○	○	○	○	○	○	●
Remote vehicle starter system (requires available automatic transmission)	○	○	○	○	○	○	○	○
Seat belts: Red	○	○	○	○	○	○	○	○
Shift Knob: Leather-wrapped	●	●	●	●	●	●	●	–
Sueded microfiber-wrapped (requires available 1LE Track Performance Package on LT and SS or available sueded microfiber-wrapped flat-bottom steering wheel on LT, LT1 and SS)	–	○	○	○	○	○	○	●
Steering wheel: Leather-wrapped flat-bottom	●	●	●	●	●	●	●	–
Sueded microfiber-wrapped flat-bottom (requires available automatic transmission on LT1)	–	○	○	○	○	○	○	●
Heated	–	–	–	●	–	–	●	●
Sunroof: Power	–	○ <sup>3</sup>	○ <sup>3</sup>	○ <sup>3</sup>	○ <sup>3</sup>	○ <sup>3</sup>	○ <sup>3</sup>	○ <sup>3</sup>
Visors: Driver and front passenger, covered vanity mirrors	●	●	–	●	–	–	–	–
Driver and front passenger, covered vanity mirrors, illuminated	–	–	–	●	–	●	●	●

<sup>1</sup> A NOTE ON CHILD SAFETY: Always use seat belts and the correct child restraint for your child's age and size, even with airbags. Even in vehicles equipped with the Passenger Sensing System, children are safer when properly secured in a rear seat in the appropriate infant, child or booster seat. Never place a rear-facing infant restraint in the front seat of any vehicle equipped with an active frontal airbag. See your vehicle Owner's Manual and the child safety seat instructions for more safety information.  
<sup>2</sup> Read the vehicle Owner's Manual for important feature limitations and information. <sup>3</sup> Coupe only. <sup>4</sup> Chevrolet Infotainment System functionality varies by model. Full functionality requires compatible Bluetooth and smartphone, and USB connectivity for some devices. <sup>5</sup> When you select a monthly plan within 30 days of activating your 1-month trial, you'll receive the first 2 months of the plan you select at no additional charge when you associate an approved payment method on file to your account and authorize recurring payments for your service plan. The amount and frequency of each recurring payment is based upon the service(s) and payment interval(s) you select from the options provided. After the trial expires, OnStar will automatically bill your payment method monthly at then-current standard monthly rates. Plans containing 4G LTE data will be billed every 30 days by AT&T. You may cancel at any time by pushing your blue OnStar button or calling 1-888-466-7827. May not be combined with other offers or retroactively applied. Offer subject to change.

## SPECIFICATIONS (CONTINUED)

● STANDARD ○ AVAILABLE – NOT AVAILABLE

	1LS	1LT	2LT	3LT	LT1	1SS	2SS	ZL1
<b>SEATING</b>								
Seats: Reclining front bucket	●	●	●	●	●	●	●	●
RECARO® performance front bucket (requires Jet Black interior color)	–	○	○	○	○	○	○	○
Cloth front bucket	●	●	–	–	○	○	–	–
Leather-trimmed front bucket	–	–	●	●	–	–	●	–
Leather-trimmed front bucket with sueded microfiber inserts (requires available RECARO® performance front bucket seats)	–	○	○	○	○	○	○	●
Seat: Driver 8-way power adjuster	●	●	●	●	●	●	●	●
Front passenger 4-way manual adjuster with power recline	●	–	–	–	–	–	–	–
Front passenger 8-way power adjuster	–	●	●	●	●	●	●	●
<b>Heated and ventilated front bucket seats</b>								
–	–	●	●	–	–	●	●	–
Rear seat: Fixed; included on ZL1 Convertible (requires available ZL1 1LE Extreme Track Performance Package on ZL1 Coupe)	● <sup>1</sup>	● <sup>1</sup>	● <sup>1</sup>	● <sup>1</sup>	● <sup>1</sup>	● <sup>1</sup>	● <sup>1</sup>	○
Folding	● <sup>2</sup>	● <sup>2</sup>	● <sup>2</sup>	● <sup>2</sup>	● <sup>2</sup>	● <sup>2</sup>	● <sup>2</sup>	● <sup>2</sup>

	1LS	1LT	2LT	3LT	LT1	1SS	2SS	ZL1
<b>ENTERTAINMENT</b>								
Chevrolet Infotainment 3 system <sup>3</sup> with 7-inch diagonal color touch-screen, AM/FM stereo, Bluetooth® audio streaming <sup>4</sup> for two active devices, voice command pass-through to compatible phone, and wireless Apple CarPlay <sup>5</sup> and wireless Android Auto <sup>TM6</sup> compatibility	●	●	●	–	●	–	–	–
Chevrolet Infotainment 3 Plus system <sup>3</sup> with 8-inch diagonal HD color touch-screen, includes features listed above, available Alexa Built-In <sup>7</sup> , enhanced voice recognition and In-Vehicle Apps <sup>8</sup> (requires available Technology Package on 1LT, 2LT and LT1)	–	○	○	●	○	●	●	●
Chevrolet Infotainment 3 Premium system <sup>3</sup> with Navigation <sup>9</sup> ; includes Plus system features listed above, additional memory for In-Vehicle Apps <sup>8</sup> and Connected Navigation <sup>10</sup>	–	–	–	○	–	–	○	○
Audio: 6-speaker system	●	●	●	–	●	●	–	–
Bose premium 9-speaker (Coupe) or 7-speaker (Convertible) system (requires available Technology Package on 1LT, 2LT and LT1)	–	○	○	●	○	–	●	●
Performance Data Recorder and video recorder (removes Forward Collision Alert on 3LT, 2SS and ZL1 when equipped) (requires available 1LE Track Performance Package on 3LT and SS)	–	–	–	○ <sup>2</sup>	–	○ <sup>2</sup>	○ <sup>2</sup>	○ <sup>2</sup>
SiriusXM <sup>®11</sup> – All Access Package with 12-month trial subscription	–	●	●	–	●	–	–	–
SiriusXM with 360L <sup>11,12</sup> – All Access Package with 12-month trial subscription (requires available Chevrolet Infotainment 3 Plus system <sup>3</sup> on 1LT, 2LT and LT1)	–	○	○	●	○	●	●	●
Available 4G LTE Wi-Fi <sup>®</sup> Hotspot <sup>13</sup> for up to seven devices, includes 1 month or 3 GB of data (whichever comes first)	○	○	○	○	○	○	○	○
Chevrolet Connected Access <sup>14</sup> with up to 10 years of standard connectivity, which currently enables features such as Vehicle Diagnostics and Dealer Maintenance Notification	●	●	●	●	●	●	●	●
Wireless charging <sup>15</sup>	–	–	–	●	–	–	●	●

<sup>1</sup> Convertible only. <sup>2</sup> Coupe only. <sup>3</sup> Chevrolet Infotainment System functionality varies by model. Full functionality requires compatible Bluetooth and smartphone, and USB connectivity for some devices. <sup>4</sup> Go to [my.chevrolet.com/learnAbout/bluetooth](http://my.chevrolet.com/learnAbout/bluetooth) to find out which phones are compatible with the vehicle. Full Bluetooth feature functionality varies by device, model and software version. <sup>5</sup> Vehicle user interface is a product of Apple and its terms and privacy statements apply. Requires compatible iPhone and data plan rates apply. <sup>6</sup> Vehicle user interface is a product of Google and its terms and privacy statements apply. Requires the Android Auto app on Google Play and a compatible Android smartphone. Data plan rates apply. You can check which smartphones are compatible at [g.co/androidauto/requirements](http://g.co/androidauto/requirements). <sup>7</sup> Functionality is subject to limitations and varies by vehicle, infotainment system and location. Select service plan required. Certain Alexa Skills require account linking to use. Visit [onstar.com](http://onstar.com) for additional details. <sup>8</sup> Requires active service plan and paid AT&T vehicle data plan or compatible device with 3G/4G LTE tethering data plan. Visit [onstar.com](http://onstar.com) for details and limitations. <sup>9</sup> Map coverage available in the United States, Puerto Rico and Canada. <sup>10</sup> Connected Navigation and Real-time Points of Interest (POI) only available on properly equipped vehicles. Requires paid plan or trial. Map coverage available in the United States, Puerto Rico and Canada. Visit [onstar.com](http://onstar.com) for details and limitations. <sup>11</sup> If you decide to continue service after your trial, the subscription plan you choose will automatically renew thereafter and you will be charged according to your chosen payment method at then-current rates. Fees and taxes apply. See the SiriusXM Customer Agreement at [siriusxm.com](http://siriusxm.com) for complete terms and how to cancel. All fees, content, features and availability are subject to change. <sup>12</sup> Certain features require a SiriusXM subscription and the Chevrolet Connected Access plan. See [siriusxm.com](http://siriusxm.com) and [onstar.com](http://onstar.com) for details and limitations. <sup>13</sup> Service varies with conditions and location. Requires active service and paid AT&T data plan. Visit [onstar.com](http://onstar.com) for details and limitations. Availability subject to change. <sup>14</sup> Standard connectivity available only to original purchaser for 10 years. Connected Access services are subject to change. Does not include emergency or security services. Diagnostic capabilities vary by model and service plan. Message and data rates may apply. Requires contact method on file and enrollment to receive alerts. Not all issues will deliver alerts. Visit [onstar.com](http://onstar.com) for details and limitations. <sup>15</sup> The system wirelessly charges one compatible mobile device. Some phones have built-in wireless charging technology and others require a special adaptor/back cover. To check for phone or other device compatibility, see [my.chevrolet.com/learn](http://my.chevrolet.com/learn) or consult your carrier.

## SPECIFICATIONS (CONTINUED)

● STANDARD ○ AVAILABLE – NOT AVAILABLE

	1LS	1LT	2LT	3LT	LT1	1SS	2SS	ZL1
<b>PACKAGES AND SPECIAL EDITIONS</b>								
<b>Satin Black Appearance Package</b>	○	○	○	○	○	○	○	–
Satin Black outside rearview mirrors and rear spoiler (requires available rear decklid-mounted lip spoiler on LS, LT and LT1)								
<b>Heavy-Duty Cooling and Brake Package</b>	–	○ <sup>1</sup>	○ <sup>1</sup>	○ <sup>1</sup>	–	–	–	–
External engine oil cooler and Brembo® 4-piston performance front brake calipers; includes extra-capacity cooling system with available 3.6L V6 engine and 10-speed automatic transmission								
<b>RS Package</b>	–	○	○	○	○	–	–	–
Dark-tinted taillamps, RS-specific grilles, Black Chevrolet bowtie emblems and rear decklid-mounted lip spoiler; includes 20" 5-split-spoke premium Gray-painted machined-face aluminum wheels on LT								
<b>Redline Edition</b>	–	○	○	○	○	○	○	–
20" Black-painted aluminum wheels with Red accents, Black Camaro fender badge with Red outline, Redline Edition graphics, Red seat belts, Red knee pads and premium carpeted floor mats (requires Jet Black interior color; requires available RS Package on LT and LT1; requires available 3.6L V6 engine or Technology Package on 1LT and 2LT; requires Black convertible top color on Convertible models) (available with Summit White, Satin Steel Metallic or Black exterior colors)								
<b>Technology Package</b>	–	○	○	–	○	–	–	–
Chevrolet Infotainment 3 Plus system <sup>2</sup> with In-Vehicle Apps <sup>3</sup> and 8-inch diagonal HD color touch-screen and Bose premium 9-speaker (Coupe) or 7-speaker (Convertible) audio system								
<b>Wild Cherry Design Package 1</b>	–	○	○	○	○	○	○	–
Black Metallic Hash Mark Stripes, 20" 5-split-spoke polished forged-aluminum wheels with Camaro logo center caps and premium carpeted floor mats with Camaro logo; includes Camaro fender badge emblem on LT and SS (requires available RS Package on LT and LT1; requires Wild Cherry Tintcoat exterior color)								
<b>Wild Cherry Design Package 2</b>	–	–	○	○	–	–	○	–
Wild Cherry Design Package 1 features listed above, Black sueded knee pads, Black fuel-filler door with visible carbon-fiber insert, Carbon Flash Metallic Second Generation Ground Effects and Center Stripe (requires selection of Black or Silver Center Stripe on 2LT and 3LT; requires selection of Black Metallic or Silver Center Stripe on 2SS; requires Wild Cherry Tintcoat exterior color)								
<b>Shock and Steel Special Edition</b>	–	–	○	○	–	–	○	–
20" blade-design aluminum wheels, Carbon Flash-painted outside mirrors, center stripe (Silver when Shock exterior color is ordered; Shock when Summit White, Satin Steel Metallic or Black exterior color is ordered), fuel-filler door in Black with visible carbon-fiber insert, Brembo 4-piston performance front brake calipers in Yellow, Black sueded knee pads, carbon-fiber instrument panel molding and premium carpeted floor mats (includes body-color rear wing spoiler with spoiler stripe on Coupe models; includes RS Package on LT) (requires Jet Black interior color and Summit White, Satin Steel Metallic, Shock or Black exterior color; requires Black convertible top on Convertible models)								

	1LS	1LT	2LT	3LT	LT1	1SS	2SS	ZL1
<b>PACKAGES AND SPECIAL EDITIONS (CONTINUED)</b>								
<b>Adrenaline Red Interior Package</b>	–	–	○	○	–	–	○	–
Jet Black interior with Adrenaline Red seat inserts, door inserts and stitching on front seats, doors, steering wheel, shifter and center console (not available with Crush, Shock or Riverside Blue Metallic exterior colors)								
<b>Ceramic White Interior Package</b>	–	–	○	○	–	–	○	–
Jet Black interior with Ceramic White seat inserts, door inserts and stitching on front seats, doors, steering wheel, shifter and center console								
<b>1LE Track Performance Package</b>	–	○ <sup>1</sup>	○ <sup>1</sup>	○ <sup>1</sup>	–	–	–	–
FE3 suspension components from Camaro SS including dampers, rear cradle mounts, ball-jointed rear toe links and stabilizer bars, Heavy-Duty Cooling and Brake Package, extra-capacity cooling system, rear differential cooler, transmission oil cooler, Brembo 4-piston performance front brake calipers, 20" 5-split-spoke low-gloss Black-painted forged-aluminum wheels with 245/40ZR20 front and 275/35ZR20 rear summer-only <sup>4</sup> run-flat tires, Satin Black hood wrap, front splitter, rear blade spoiler, Gray RS badging, dark-tinted taillamps, and suede-wrapped flat-bottom steering wheel and shift knob; includes dual-mode performance exhaust system and auxiliary engine cooling system with available 3.6L V6 engine (Snow/Ice mode is replaced with Track mode on Driver Mode Selector) (requires 6-speed manual transmission and Jet Black interior color)								
<b>SS1LE Track Performance Package</b>	–	–	–	–	–	○ <sup>1</sup>	○ <sup>1</sup>	–
FE4 performance suspension with unique bushings, springs, stabilizer bars and Magnetic Ride Control, Red-painted Brembo 6-piston front monobloc brake calipers and 4-piston rear calipers, 2-piece brake rotors, electronic Limited-Slip Differential (eLSD), dual-mode performance exhaust system, 20" 5-split-spoke Satin Graphite forged-aluminum wheels, Goodyear Eagle® F1 SuperCar® 285/30R20 front and 305/30R20 rear summer-only tires; <sup>4</sup> Satin Black hood wrap, front splitter, rear blade spoiler, RECARO® performance bucket seats, and suede-wrapped flat-bottom steering wheel and shift knob (includes Head-Up Display on 1SS) (requires Jet Black interior color)								
<b>ZL11LE Extreme Track Performance Package</b>	–	–	–	–	–	–	–	○ <sup>1</sup>
Performance suspension with Multimatic DSSV™ (Dynamic Suspensions Spool Valve) dampers, Red-painted Brembo brake calipers, 19" 5-split-spoke low-gloss Black-painted forged-aluminum wheels, Goodyear Eagle F1 SuperCar 3R 305/30R19 front and 325/30R19 rear summer-only tires; <sup>5</sup> Satin Black hood wrap, low-gloss Black outside rearview mirrors, unique front splitter and front dive planes with lower daytime running lamps deleted, exposed-weave carbon-fiber hood insert and rear wing spoiler, and fixed rear seat; includes specific gear ratios with 6-speed manual transmission								

<sup>1</sup> Coupe only. <sup>2</sup> Chevrolet Infotainment System functionality varies by model. Full functionality requires compatible Bluetooth and smartphone, and USB connectivity for some devices. <sup>3</sup> Requires active service plan and paid AT&T vehicle data plan or compatible device with 3G/4G LTE tethering data plan. Visit onstar.com for details and limitations. <sup>4</sup> Do not use summer-only tires in winter conditions, as it would adversely affect vehicle safety, performance and durability. Use only GM-approved tire and wheel combinations. Unapproved combinations may change the vehicle's performance characteristics. For important tire and wheel information, go to my.chevrolet.com/learnAbout/chevrolettires or see your dealer. <sup>5</sup> Driving on wet roads, in heavy rain, or through standing water with competition-oriented tires may cause hydroplaning and loss of control. Use extreme caution and drive slowly on wet roads.

## DIMENSIONS

Length	188.3" (LS, LT, LT1 and SS) 190.2" (ZL1)	Width	74.7" (LS, LT, LT1 and SS) 75.0" (ZL1)	Head Room (Coupe, front)	38.5"
Wheelbase	110.7"	Front Track	62.5" (LS, LT and LT1) 63.0" (SS) 63.4" (ZL1)	Head Room (Convertible, front)	38.4"
Height	53.1" (LS, LT, LT1 and SS Coupe) 52.9" (LT, LT1 and SS Convertible and ZL1 Coupe) 52.6" (ZL1 Convertible)	Rear Track	63.7" (LS, LT and LT1) 62.9" (SS) 62.0" (ZL1)	Leg Room (front)	43.9"

## MAXIMUM CAPACITIES

Fuel tank (approximate)	19 gallons
Cargo volume <sup>1</sup>	9.1 cubic feet (Coupe) 7.3 cubic feet (Convertible, top up)

## EPA-ESTIMATED FUEL ECONOMY

2.0L turbocharged 4-cylinder	19 MPG city/29 highway/22 combined (manual) 22 MPG city/30 highway/25 combined (automatic)
3.6L V6	16 MPG city/26 highway/20 combined (manual) 18 MPG city/29 highway/22 combined (automatic)
6.2L V8	16 MPG city/24 highway/19 combined (manual) 16 MPG city/26 highway/20 combined (automatic)
6.2L supercharged V8	14 MPG city/20 highway/16 combined (manual) 13 MPG city/21 highway/16 combined (automatic)



CHEVROLET  
MY REWARDS

**Enroll.** It's quick, it's easy and there is no cost to join. You will automatically receive points just for enrolling<sup>2</sup>. To enroll, visit [mychevroletrewards.com](http://mychevroletrewards.com).

**Earn.** Earn points on eligible new vehicle leases or purchases, which can be redeemed toward accessories<sup>3</sup>, vehicle service and more. Plus, get points for paid service<sup>4</sup>, select OnStar<sup>®</sup> and Connected Services plans<sup>5</sup> and many others.

**Enjoy.** Use points toward eligible accessories<sup>3</sup>, paid service, eligible new vehicles<sup>6</sup> and more. It's our way of saying thanks!



CHEVROLET  
COMPLETE  
CARE

**First oil change is covered<sup>7</sup>.** Experience Chevrolet Complete Care, a comprehensive coverage, limited warranty and protection program that comes standard with every new 2021 Chevrolet Camaro lease and purchase.

Simply, it is designed around you, to make it easy to help keep your Chevrolet like new – and give you the confidence you deserve. For more information, visit [chevrolet.com/complete-care](http://chevrolet.com/complete-care).

## NEW VEHICLE LIMITED WARRANTY

**Chevrolet will warrant each 2021 Camaro with:**

3-year/36,000-mile<sup>8</sup> Bumper-to-Bumper Limited Warranty.

6 years/100,000 miles<sup>8</sup> of Rust-Through Protection.

5-year/60,000-mile<sup>8</sup> Powertrain Limited Warranty.

5 years/60,000 miles<sup>8</sup> of Roadside Assistance<sup>9</sup> and Courtesy Transportation.

<sup>1</sup> Cargo and load capacity limited by weight and distribution. <sup>2</sup> Must be 18 years or older. Points may be earned and redeemed only at participating GM entities, dealers or third party retailers in the United States (excluding Puerto Rico, the U.S. Virgin Islands or Guam). Points are not earned on taxes or certain fees, and expire 5 years from when points are earned. Some restrictions apply. For more information, please view full program Terms & Conditions. <sup>3</sup> Members may use the voucher on eligible Chevrolet, Buick, GMC and Cadillac Accessories purchased through a participating dealership. Voucher must be used by expiration date noted. Any unused amount of the voucher will be forfeited. <sup>4</sup> Excludes taxes, fees and body shop repair orders. It could take up to 15 days for points to post to your account. <sup>5</sup> Connected vehicle services vary by vehicle model and require working electrical system, cell reception and GPS signal. Requires active service plan. OnStar links to emergency services. Visit [onstar.com](http://onstar.com) for details and limitations. <sup>6</sup> Not compatible with some other offers, including the GM Employee Discount programs. Excludes 2020 Chevrolet Corvette. Dealer contribution may affect final consumer cost. <sup>7</sup> Maintenance visit must occur within first year of vehicle delivery. Service visit consists of ACDelco dexos1™ Full Synthetic Oil and Filter Change/Tire Rotation/MPVI. Does not include air filters. See participating dealer for other restrictions and complete details. <sup>8</sup> Whichever comes first. See dealer for details. <sup>9</sup> Roadside service provided by Allstate Roadside Services. Limitations apply.

## IMPORTANT INFORMATION

**Chevrolet Owner Center (my.chevrolet.com).** Everything you need to know. Anything you need to do. Your Chevrolet Owner Center makes it easy. Create your account today to get the most out of your new vehicle. Get special alerts and offers, schedule service, review your maintenance schedule, and view how-to videos specifically for your vehicle. All online, anytime. Visit the Owner Center today to register or take a tour.

**Engines.** Chevrolet products are equipped with engines produced by GM Global Propulsion Systems or other suppliers to GM worldwide. The engines in Chevrolet products may also be used in other GM makes and models.

**Assembly.** Chevrolet vehicles and their components are assembled or produced by different operating units of General Motors, its subsidiaries or suppliers to GM worldwide. We sometimes find it necessary to produce Chevrolet vehicles with different or differently sourced components than originally scheduled. Since some options may be unavailable when your vehicle is assembled, we suggest you verify that your vehicle includes the equipment you ordered and that, if there were changes, they are acceptable to you.

**Chevrolet Connected Services and OnStar.** Connected vehicle services vary by vehicle model and require an active service plan, working electrical system, cell reception and GPS signal. OnStar links to emergency services. Visit onstar.com for details and limitations.

**A note on child safety.** Always use seat belts and the correct child restraint for your child's age and size, even with airbags. Even in vehicles equipped with the Passenger Sensing System, children are safer when properly secured in a rear seat in the appropriate infant, child or booster seat. Never place a rear-facing infant restraint in the front seat of any vehicle equipped with an active frontal airbag. See your vehicle Owner's Manual and the child safety seat instructions for more safety information.

**Important words about this catalog.** We have tried to make this catalog comprehensive and factual. We reserve the right, however, to make changes at any time, without notice, in prices, colors, materials, equipment, specifications, models and availability. Specifications, dimensions, measurements, ratings and other numbers in this catalog and other printed materials provided at the dealership or affixed to vehicles are approximations based on design and engineering drawings, prototypes and laboratory tests. Your vehicle may differ due to variations in manufacture and equipment. Since some information may have been updated since the time of printing, please check with your Chevrolet dealer for complete details. Chevrolet reserves the right to lengthen or shorten the model year for any product for any reason or to start and end model years at different times. Certain vehicle features may lose their usefulness over time due to obsolescence from technological changes.

Unless otherwise noted, all claims based on GM Sports Car segment and latest available competitive information. Excludes other GM vehicles.

**Fleet orders.** Some standard content may be deleted on fleet orders. See dealer for details.

**Tires.** Camaro SS and ZL1 models, as well as models with available 1LE Track Performance Packages, come equipped with summer-only tires<sup>1</sup> that tend to wear faster and are more susceptible to damage from road hazards or curb impact than standard profile tires. This type of damage is not covered by the GM New Vehicle Limited Warranty. See your dealer for proper tire selection.

**Spare tire information.** There is no standard jack or spare tire in the 2021 Chevrolet Camaro. Some vehicles have a tire sealant and compressor kit that uses a liquid tire sealant to temporarily seal up to a one-quarter-inch puncture in the tread area of the tire. After using the tire inflator kit, it is recommended that you take the tire to an authorized retailer for inspection and repair as soon as possible, but at least within 100 miles of driving. The tire sealant cannot seal and inflate sidewall damage, punctures larger than one-quarter inch, or a tire that has unseated from the wheel. The sealant can only be used on one tire and for one time before its expiration date.

**Chevrolet ownership experience.** Chevrolet is committed to enhancing the vehicle shopping and ownership experience through a wide array of programs. Visit chevrolet.com to build and price, find a vehicle, request a quote, compare vehicles, find financial tools or track your vehicle order. You'll also find information about 24-hour Roadside Assistance, Courtesy Transportation, Customer Assistance, GM Mobility, safety and current incentives.

**Chevrolet.com/safety.** Chevrolet is committed to helping keep you and your family safe – from the start of your journey to your destination. That's why Chevrolet vehicles offer standard and available safety and security features to help give you peace of mind.

**GMmobility.com (1-800-323-9935).** GM Mobility<sup>SM</sup> offers financial assistance for eligible adaptive equipment to make automotive travel easier for persons with disabilities or special transportation needs. To learn more about special GM Mobility offers, visit gmmobility.com.

**The BuyPower Card.** The Chevrolet BuyPower Card – Every purchase you make with the BuyPower Card from Capital One\* helps you earn toward an eligible new Chevrolet, Buick, GMC or Cadillac vehicle. There's no limit on the amount you can earn or redeem, and your Earnings don't expire. Visit chevroletbuypowercard.com/catalogs.

\* Capital One, N.A. is the issuer of the BuyPower Card. General Motors ("GM") is responsible for the operation and administration of the Earnings program.



GM, the GM logo, Chevrolet, the Chevrolet logo, and the slogans, emblems, vehicle model names, vehicle body designs and other marks appearing in this catalog are the trademarks and/or service marks of General Motors, its subsidiaries, affiliates or licensors. ©2020 OnStar LLC. All rights reserved. Sirius, XM, SiriusXM and all related marks and logos are trademarks of Sirius XM Radio Inc. Amazon, Alexa and all related marks are trademarks of Amazon.com, Inc. or its affiliates. The Bluetooth word mark is a registered trademark owned by Bluetooth SIG, Inc., and any use of such mark by Chevrolet is under license. Bose is a registered trademark of the Bose Corp. Brembo is a registered trademark of Brembo S.p.A. RECARO is a registered trademark of RECARO GmbH & Co. Goodyear Eagle and SuperCar are registered trademarks of The Goodyear Tire & Rubber Company.

©2020 General Motors. All rights reserved. December 2020

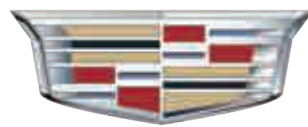
<sup>1</sup> Do not use summer-only tires in winter conditions, as it would adversely affect vehicle safety, performance and durability. Use only GM-approved tire and wheel combinations. Unapproved combinations may change the vehicle's performance characteristics. For important tire and wheel information, go to my.chevrolet.com/learnAbout/chevroleettires or see your dealer.

FIND NEW ROADS™

CHEVROLET.COM



# MURRAY



*Cadillac*

**403.527.1141**

**WWW.MURRAYCHEV.CA**

**1270 TRANS CANADA WAY SE  
MEDICINE HAT, AB - T1B 1J5**