

MALIBU 2021

CHEVROLET



# TURN EVERY STREET INTO A SHOWROOM.

With a sophisticated appearance, the 2021 Malibu is built for second glances, whether you choose the sculpted LT, the street-inspired RS or the luxurious Premier. But there's so much more than that. Remarkable driving dynamics, spirited performance and refined interiors come together in this midsize sedan designed for those who only accept the very best.

## FIND NEW ROADS™

At left: Malibu Premier in Shadow  
Gray Metallic with available features.  
At right: Malibu RS in Cherry Red  
Tintcoat (extra-cost color).



## MODELS

### LS

Expect style and substance in Malibu LS.

The sculpted exterior is wrapped around a sophisticated interior that includes essentials such as Apple CarPlay<sup>®1</sup> and Android Auto<sup>™2</sup> compatibility and an 8-inch diagonal color touch-screen display. You'll also enjoy the poised performance of a 1.5L turbocharged engine with Direct Injection and a Continuously Variable Transmission (CVT).



### RS

Malibu RS is impossible to ignore.

Head-turning details include the blacked-out sport grille, Black bowtie emblems, exclusive 18-inch wheels, rear spoiler and dual exhaust outlets.

Inside, an 8-way power driver seat with power lumbar control and a leather-wrapped steering wheel and shifter are your invitation to command the road.



<sup>1</sup> Vehicle user interface is a product of Apple and its terms and privacy statements apply. Requires compatible iPhone and data plan rates apply. <sup>2</sup> Vehicle user interface is a product of Google and its terms and privacy statements apply. Requires the Android Auto app on Google Play and an Android compatible smartphone running Android 5.0 or higher. Data plan rates apply.

## MODELS

### LT

Malibu LT leaves a lasting impression.

Signature LED daytime running lamps, bright LED taillamps and stylish 17-inch aluminum wheels are sure to attract attention. Conveniences include a remote vehicle starter system, dual-zone climate controls and heated power-adjustable exterior mirrors.



### PREMIER

Premier combines a passion for performance with sophisticated style.

At the heart of it, a 2.0L turbocharged engine and a 9-speed automatic transmission quicken your pulse. Premier brings luxury to another level with heated and ventilated front seats and heated rear outboard seats. Leather-appointed seating surfaces, a Bose 9-speaker premium audio system and a power tilt-sliding sunroof with skylight add to the ambience.



## SPECIAL EDITIONS

### SPORT EDITION

Malibu LT with the available Sport Edition is ready to play whenever you are.

Black highlights are everywhere, from the nameplate badge and grille to the front and rear Chevrolet bowtie emblems. And you'll ride in style with 19-inch Black-painted aluminum wheels.



## SPECIAL EDITIONS

### MIDNIGHT EDITION

Don't be afraid of the dark.

Available exclusively in Mosaic Black Metallic on Malibu LT, Midnight Edition inspires with 19-inch Black-painted aluminum wheels, a Black nameplate badge, a blacked-out grille with dark chrome surround and Black front and rear Chevrolet bowtie emblems. A Jet Black interior completes the theme.



### REDLINE EDITION

Stand out from the crowd.

Available with Silver Ice Metallic, Summit White and Mosaic Black Metallic on Malibu LT, Redline Edition features 19-inch Black-painted aluminum wheels with Red accents and Black badging outlined in Red. A Redline-exclusive Black grille sits front and center to complement the Black mirror caps and Black Chevrolet bowtie emblems.







## INTERIOR DESIGN

# MAKE YOURSELF COMFORTABLE.

Malibu Premier interior  
in Light Wheat with  
Dark Atmosphere accents.

The seats in Malibu are contoured for support for drives both long and short. The **8-way power driver seat**, standard on RS, LT and Premier, helps create the perfect setting.

Premier features **heated front and rear outboard seats** along with a heated steering wheel to chase away the chill and ventilated front seats to help keep you cool on warm days.

Rear-seat passengers were kept top of mind in Malibu. That's why the design includes **generous rear-seat leg room** and rear doors that open wide to help make entry and exit easy.

**Rear Seat Reminder**<sup>1</sup> activates when the rear doors are opened and closed up to 10 minutes before or anytime while your vehicle is on. So when you turn off the vehicle under certain conditions, you will get a reminder to double-check for valuables left behind.

<sup>1</sup> Does not detect people or items. Always check rear seat before exiting.



## INTERIOR DESIGN

# ENJOY THE VIEW.

- Sculpted Jet Black Premium Cloth bucket seats combine with a leather-wrapped shifter and steering wheel in Malibu RS.
- Keyless Open and Start is standard on every Malibu.
- An acoustic-laminated windshield, a custom dash panel with strategic applications of laminated steel and triple-sealed doors are just a few features that help create a quiet cabin.
- Satin chrome is generously displayed throughout the Malibu interior for a clean, sophisticated attitude. Soft touch components exude an impressively tailored appearance.

Malibu RS interior in Jet Black.



# TECH THAT'S HERE TO HELP.

Available **Automatic Parking Assist**<sup>1</sup> can help you search for and steer your vehicle into a parallel or perpendicular parking space. While the feature steers and tells you when to shift gears, you may need to override and take control.

With the standard **Chevrolet Infotainment 3 system**<sup>2</sup>, you can easily make hands-free calls, play music and access contacts from your compatible smartphone via the touch-screen display or through voice commands.

Available **Teen Driver technology** helps encourage better driving habits by providing an in-vehicle report card that monitors the frequency of certain available safety technology feature activations. It also supplies seat belt

reminders including Buckle to Drive and muting the audio until front-seat occupants are buckled, and gives warnings when the vehicle is traveling over a predetermined speed.

<sup>1</sup> Safety or driver assistance features are no substitute for the driver's responsibility to operate the vehicle in a safe manner. The driver should remain attentive to traffic, surroundings and road conditions at all times. Visibility, weather and road conditions may affect feature performance. Read the vehicle Owner's Manual for more important feature limitations and information. <sup>2</sup> Chevrolet Infotainment System functionality varies by model. Full functionality requires compatible Bluetooth and smartphone, and USB connectivity for some devices.

Teen Driver technology.

Available wireless Apple CarPlay®<sup>1</sup> (shown)  
and wireless Android Auto™<sup>2</sup> compatibility.

Available wireless charging station<sup>3</sup>

Driver Information Center with 8-inch diagonal  
reconfigurable display. Standard on Premier.



<sup>1</sup> Vehicle user interface is a product of Apple and its terms and privacy statements apply. Requires compatible iPhone and data plan rates apply. <sup>2</sup> Vehicle user interface is a product of Google and its terms and privacy statements apply. Requires the Android Auto app on Google Play and a compatible Android smartphone. Data plan rates apply. You can check which smartphones are compatible at [g.co/androidauto/requirements](https://g.co/androidauto/requirements). <sup>3</sup> The system wirelessly charges one compatible mobile device. Some phones have built-in wireless charging technology and others require a special adaptor/back cover. To check for phone or other device compatibility, see [my.chevrolet.com/learn](https://my.chevrolet.com/learn) or consult your carrier.

Apple CarPlay is a trademark of Apple Inc. Siri, iPhone and Apple Music are trademarks of Apple Inc., registered in the U.S. and other countries. Android, Android Auto and other marks are trademarks of Google LLC.



## PERFORMANCE

Malibu Premier in Northsky Blue Metallic with available features.

# POWER AND PRECISION.

- The 1.5L turbo engine is paired with a Continuously Variable Transmission (CVT) and offers 163 horsepower, 184 lb.-ft. of torque and an EPA-estimated 36 MPG highway<sup>1</sup>
- The available 2.0L turbo engine delivers 250 horsepower and 260 lb.-ft. of torque with the 9-speed automatic transmission. This combination offers an EPA-estimated 33 MPG highway<sup>2</sup> Standard on Premier.
- Variable-effort Electric Power Steering (EPS) uses energy only when steering effort is applied. EPS provides greater assistance at low speeds and tighter control at highway speeds.
- The MacPherson strut front suspension and independently tuned 4-link rear suspension are precision-calibrated for impressive ride and handling.

<sup>1</sup> EPA-estimated MPG city/highway: Malibu with 1.5L engine 29/36. <sup>2</sup> EPA-estimated MPG city/highway: Malibu with 2.0L engine 22/33.





# SAFETY IS ALWAYS IN STYLE.



**Adaptive Cruise Control.** While you steer, this feature can automatically maintain a driver-selected gap time from the detected vehicle you're following. Available on Premier.



**Front Pedestrian Braking.** At speeds below 50 mph, this feature can help you avoid or reduce the severity of a front-end collision with a pedestrian it detects directly in front of you. It provides pedestrian alerts and can even automatically provide hard emergency braking or enhance the driver's hard braking. Limited nighttime and low-visibility performance. Available on LS, RS, LT and Premier.



**Automatic Emergency Braking.** At speeds below 50 mph, this feature works with Forward Collision Alert to help you avoid or reduce the severity of a front-end collision with a detected vehicle you're following by automatically providing hard emergency braking or enhancing the driver's hard braking. Available on LS, RS and LT.



**Enhanced Automatic Emergency Braking.** This feature works with Forward Collision Alert to help you avoid or reduce the severity of a front-end collision with a detected vehicle you're following by automatically providing hard emergency braking or enhancing the driver's hard braking. Available on Premier.



**Forward Collision Alert.** Can warn you if it detects a potential front-end collision with a vehicle you're following. It can also provide a tailgating alert if you're following much too closely. Available on LS, RS, LT and Premier.



**Following Distance Indicator.** This feature can display the gap time in seconds between your vehicle and a detected vehicle you're following. Available on LS, RS, LT and Premier.



**Lane Change Alert with Side Blind Zone Alert.** This feature can provide side mirror visual alerts when a detected moving vehicle is quickly approaching or is in your side blind zone. Available on LS, RS, LT and Premier.



**Lane Keep Assist with Lane Departure Warning.** Uses a brief, gentle steering wheel turn to alert you when you may be unintentionally drifting out of detected lane lines, so you can steer to stay safely in your lane. If needed, you may receive additional Lane Departure Warning alerts. System alerts do not occur if you are using your turn signal or it detects that you may be intentionally leaving your lane. Available on LS, RS, LT and Premier.



**Rear Vision Camera.** This feature provides an image of the area directly behind your vehicle when traveling in Reverse at low speeds. Standard on all models.



**Rear Cross Traffic Alert.** This feature can warn you of detected left or right cross traffic behind your Malibu when in Reverse. Available on LS, RS, LT and Premier.



**Rear Park Assist.** Can provide distance alerts to nearby detected objects behind your vehicle to help you park and avoid collisions when traveling in Reverse at low speeds. Available on LS, RS and LT.



**Automatic Parking Assist.** Automatic Parking Assist can search for and steer your vehicle into a parallel or perpendicular parking space. While the feature steers, you'll brake, accelerate and follow directions to shift gears. Available on Premier.



**IntelliBeam®** Can automatically turn the vehicle's high beam headlamps on and off according to surrounding traffic conditions. Available on LS, RS, LT and Premier.

**Safety starts with you.** Safety or driver assistance features are no substitute for the driver's responsibility to operate the vehicle in a safe manner. The driver should remain attentive to traffic, surroundings and road conditions at all times. Visibility, weather and road conditions may affect feature performance. Read the vehicle Owner's Manual for more important feature limitations and information.





## ACCESSORIES



Floor Liners available from Chevrolet Accessories.



Black Illuminated Bowtie Emblem available from Chevrolet Accessories.



Cargo Net available from Chevrolet Accessories.



Rear Splash Guards available from Chevrolet Accessories.



## EXTERIOR COLORS



Summit White



Silver Ice Metallic



Shadow Gray Metallic<sup>1</sup>



Cherry Red Tintcoat<sup>1, 2, 3</sup>



Black Cherry Metallic<sup>1</sup>



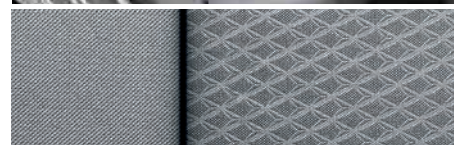
Northsky Blue Metallic<sup>1, 2, 4</sup>



Mosaic Black Metallic<sup>1</sup>

<sup>1</sup> Not available on L. <sup>2</sup> Not available on LS. <sup>3</sup> Extra-cost color. <sup>4</sup> Not available on RS.

## MODELS



Medium Ash Gray Premium Cloth



16" Aluminum Wheels  
Standard on L

**L** Malibu L includes these features:

### MECHANICAL

**Brakes** – 4-wheel antilock, 4-wheel disc with Duralife® rotors

**Engine** – 1.5L turbocharged DOHC 4-cylinder with Variable Valve Timing (VVT), Direct Injection and stop/start technology

**StabiliTrak®** – Electronic Stability Control System with Traction Control

**Steering** – power, rack-and-pinion

**Suspension** – front, MacPherson strut; rear, 4-link

**Transmission** – Continuously Variable Transmission (CVT)

### EXTERIOR

**Daytime running lamps**

**Fuel filler** – capless fueling

**Glass** – acoustic-laminated windshield

**Headlamps** – halogen, automatic on/off with automatic delay

**Mirrors** – power-adjustable, manual-folding with Black caps

**Tires** – P205/65R16

**Wipers** – front variable-speed, intermittent with washers

### INTERIOR

**Air conditioning** – manual, single-zone with cabin air filter

**Audio** – 6-speaker system

**Cruise control** – electronic with Set and Resume Speed

**Door locks** – power programmable with lockout protection and manual rear door child security

**Driver Information Center** – monochromatic display

**Entertainment** – Chevrolet Infotainment 3 system<sup>1</sup> with 8-inch diagonal color touch-screen, AM/FM stereo, Bluetooth® audio streaming<sup>2</sup> for two active devices, voice command pass-through to compatible phone, and wireless Apple CarPlay<sup>®3</sup> and wireless Android Auto™<sup>4</sup> compatibility

**Keyless Open and Start** – includes extended-range Remote Keyless Entry

### INTERIOR (CONTINUED)

**Lighting** – front-seat reading lamps, overhead courtesy lamp and illuminated trunk area

**Media** – USB ports<sup>5</sup>; one Type-A and one Type-C, and auxiliary input jack in front center stack storage area

**Rear Vision Camera**<sup>6</sup>

**Seat** – rear, 60/40 split-folding

**Seats** – driver and front passenger 6-way manual adjusters

**Steering column** – manual tilt and telescopic

**Steering wheel** – 3-spoke, deluxe with mounted audio, cruise and phone controls

**Theft-deterrent system** – unauthorized entry

**Tire Pressure Monitoring System** – with Tire Fill Alert (does not monitor spare tire, if equipped)

**Windows** – power with express-down

<sup>1</sup> Chevrolet Infotainment System functionality varies by model. Full functionality requires compatible Bluetooth and smartphone, and USB connectivity for some devices. <sup>2</sup> Go to [my.chevrolet.com/learnAbout/bluetooth](http://my.chevrolet.com/learnAbout/bluetooth) to find out which phones are compatible with the vehicle. Full Bluetooth feature functionality varies by device, model and software version. <sup>3</sup> Vehicle user interface is a product of Apple and its terms and privacy statements apply. Requires compatible iPhone and data plan rates apply. <sup>4</sup> Vehicle user interface is a product of Google and its terms and privacy statements apply. Requires the Android Auto app on Google Play and a compatible Android smartphone. Data plan rates apply. You can check which smartphones are compatible at [g.co/androidauto/requirements](http://g.co/androidauto/requirements). <sup>5</sup> Not compatible with all devices. <sup>6</sup> Read the vehicle Owner's Manual for important feature limitations and information.

## MODELS (CONTINUED)



**LS** In addition to or replacing L features, LS includes:

### INTERIOR

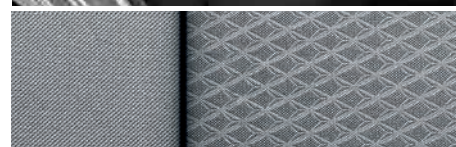
Active Noise Cancellation

Compass – digital, in Driver Information Center

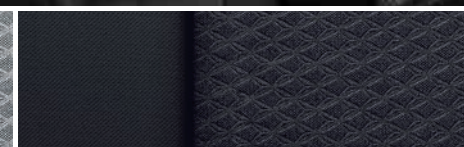
Outside temperature display

Teen Driver technology

Visors – driver and front passenger, covered vanity mirrors



Medium Ash Gray Premium Cloth



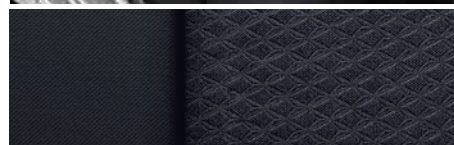
Jet Black Premium Cloth (shown)



16" Aluminum Wheels  
Standard on LS



## MODELS (CONTINUED)



Jet Black Premium Cloth



18" Aluminum Wheels  
Standard on RS

**RS** In addition to or replacing LS features, RS includes:

### MECHANICAL

Exhaust – dual-outlet with polished tips

### EXTERIOR

Mirrors – power-adjustable, manual-folding with body-color caps

RS accents – Black grille inserts with chrome surround, Black bowtie emblems and Black Malibu badges

Spoiler – rear

Tires – P245/45R18

### INTERIOR

Armrest – rear-seat center with cup holders

Seat – driver 8-way power adjuster with power lumbar control

Shift knob – leather-wrapped

Steering wheel – leather-wrapped

## MODELS (CONTINUED)



**LT** In addition to or replacing LS features, LT includes:

### EXTERIOR

Daytime running lamps – LED

Mirrors – heated, power-adjustable, manual-folding with body-color caps

Taillamps – LED

Tires – P225/55R17

### INTERIOR

Air conditioning – automatic, dual-zone with individual climate settings for driver and front passenger

Armrest – rear-seat center with cup holders

Cabin air filter

Lighting – rear-seat reading lamps

Remote vehicle starter system

Seat – driver 8-way power adjuster with power lumbar control

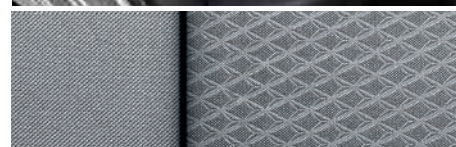
Seats – heated driver and front passenger

SiriusXM®<sup>1</sup> – All Access Package with 3-month trial subscription

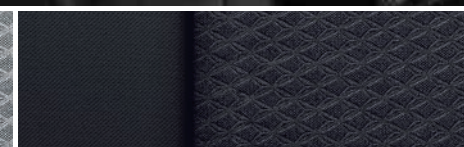
Vents – rear console

Visors – driver and front passenger, covered illuminated vanity mirrors

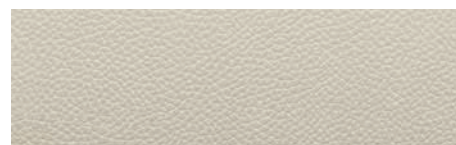
Windows – power with driver express-up/-down, all others express-down



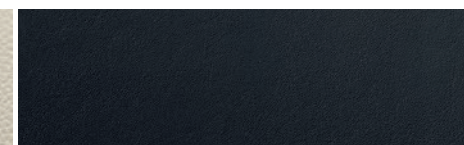
Medium Ash Gray Premium Cloth



Jet Black Premium Cloth



Light Wheat Leather-Appointed Seating Surfaces<sup>2</sup>



Jet Black Leather-Appointed Seating Surfaces<sup>2</sup> (shown)



17" Aluminum Wheels  
Standard on LT



18" Bright Machined-Aluminum  
Wheels with Lunar Gray Pockets  
Available on LT



19" Aluminum Wheels  
Available on LT



19" Black-Painted Aluminum Wheels  
Available on LT with Midnight Edition  
or Sport Edition



19" Black-Painted Aluminum Wheels  
with Red Accents Available on LT  
with Redline Edition

<sup>1</sup> If you decide to continue service after your trial, the subscription plan you choose will automatically renew thereafter and you will be charged according to your chosen payment method at then-current rates. Fees and taxes apply. See the SiriusXM Customer Agreement at [siriusxm.com](http://siriusxm.com) for complete terms and how to cancel. All fees, content, features and availability are subject to change. <sup>2</sup> Requires available Leather Package.

## MODELS (CONTINUED)



**PREMIER** In addition to or replacing LT features, Premier includes:

### MECHANICAL

Engine – 2.0L turbocharged DOHC 4-cylinder with Variable Valve Timing (VVT) and Direct Injection

Exhaust – dual-outlet with polished tips

Transmission – 9-speed automatic with overdrive

### EXTERIOR

Door handles – chrome with body-color inserts

Headlamps – LED

Mirrors – heated, power-adjustable, manual folding with body-color caps and integrated turn signal indicators

Tire inflator kit

Tires – P245/40R19

### INTERIOR

Audio – Bose premium 9-speaker audio system

Driver Information Center – enhanced 8-inch diagonal multi-color reconfigurable display

Entertainment – Chevrolet Infotainment 3 Plus system<sup>1</sup> with Navigation<sup>2</sup>; includes 8-inch diagonal HD color touch-screen, AM/FM stereo, Bluetooth<sup>®</sup> audio streaming<sup>3</sup> for two active devices, wireless Apple CarPlay<sup>®4</sup> and wireless Android Auto<sup>™5</sup> compatibility, available Alexa Built-In<sup>6</sup>, enhanced voice recognition, In-Vehicle Apps<sup>7</sup> and Connected Navigation<sup>8</sup>

HD Rear Vision Camera<sup>9</sup>

Lighting – LED light pipes on instrument panel, front doors and map pockets

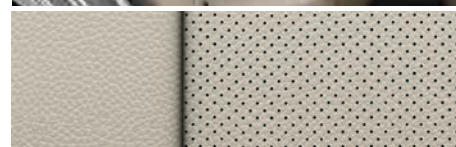
Media – charge-only USB port<sup>10</sup> on rear of center console

Memory settings – recalls two presets for 8-way power driver seat and outside mirrors

Mirror – rearview, auto-dimming

Power outlet – 120-volt on rear of center console

Seat – front passenger 6-way power adjuster with power lumbar control



Light Wheat Perforated Leather-Appointed Seating Surfaces (shown)



Jet Black Perforated Leather-Appointed Seating Surfaces



19" Aluminum Wheels  
Standard on Premier

### INTERIOR (CONTINUED)

Seats – ventilated driver and front passenger; heated rear outboard seating positions

Shift knob – leather-wrapped

Sill plates – front, bright

Steering wheel – heated, leather-wrapped

Sunroof – power, tilt-sliding, with fixed rear skylight and sunshade

Trunk mat – carpeted

Wireless charging<sup>11</sup>

<sup>1</sup> Chevrolet Infotainment System functionality varies by model. Full functionality requires compatible Bluetooth and smartphone, and USB connectivity for some devices. <sup>2</sup> Map coverage available in the United States, Puerto Rico and Canada. <sup>3</sup> Go to [my.chevrolet.com/learnAbout/bluetooth](http://my.chevrolet.com/learnAbout/bluetooth) to find out which phones are compatible with the vehicle. Full Bluetooth feature functionality varies by device, model and software version. <sup>4</sup> Vehicle user interface is a product of Apple and its terms and privacy statements apply. Requires compatible iPhone and data plan rates apply. <sup>5</sup> Vehicle user interface is a product of Google and its terms and privacy statements apply. Requires the Android Auto app on Google Play and a compatible Android smartphone. Data plan rates apply. You can check which smartphones are compatible at [g.co/androidauto/requirements](http://g.co/androidauto/requirements). <sup>6</sup> Functionality is subject to limitations and varies by vehicle, infotainment system and location. Select service plan required. Certain Alexa Skills require account linking to use. Visit [onstar.com](http://onstar.com) for additional details. <sup>7</sup> Requires active service plan and paid AT&T vehicle data plan or compatible device with 3G/4G LTE tethering data plan. Visit [onstar.com](http://onstar.com) for details and limitations. <sup>8</sup> Connected Navigation and Real-time Points of Interest (POI) only available on properly equipped vehicles. Requires paid plan or trial. Map coverage available in the United States, Puerto Rico and Canada. Visit [onstar.com](http://onstar.com) for details and limitations. <sup>9</sup> Read the vehicle Owner's Manual for important feature limitations and information. <sup>10</sup> Not compatible with all devices. <sup>11</sup> The system wirelessly charges one compatible mobile device. Some phones have built-in wireless charging technology and others require a special adaptor/back cover. To check for phone or other device compatibility, see [my.chevrolet.com/learn](http://my.chevrolet.com/learn) or consult your carrier.



## SPECIFICATIONS

● STANDARD ○ AVAILABLE – NOT AVAILABLE

	L	LS	RS	LT	PREMIER
<b>EXTERIOR</b>					
Antenna: Black	●	●	–	–	–
Body-color	–	–	●	●	●
Chevrolet bowtie emblems: Black (requires available Midnight Edition, Redline Edition or Sport Edition on LT)	–	–	●	○	–
Daytime running lamps: Integral to headlamps	●	●	●	–	–
LED	–	–	–	●	●
Door handles: Body-color	●	●	●	●	–
Chrome with body-color inserts	–	–	–	–	●
Headlamps: Halogen	●	●	●	●	–
LED	–	–	–	–	●
Automatic on/off with automatic delay	●	●	●	●	●
IntelliBeam: Automatic high beam on/off (requires available Driver Confidence I & II Package on LS, RS and LT; requires available Enhanced Driver Confidence Package on Premier)	–	○	○	○	○
Mirrors: Power-adjustable, manual-folding	●	●	●	●	●
Black caps (requires available Redline Edition on LT)	●	●	–	○	–
Body-color caps (requires available Driver Confidence I Package on LS)	–	○	●	●	●
Heated	–	–	–	●	●
Integrated turn signal indicators	–	–	–	–	●
Spoiler: Rear	–	–	●	–	–
Taillamps: LED	–	–	–	●	●
Tire: Compact spare	●	●	●	●	–
Tire inflator kit	–	–	–	–	●
Tires: P205/65R16	●	●	–	–	–
P225/55R17	–	–	–	●	–
P245/45R18 (requires available 18" bright-machined aluminum wheels with Lunar Gray pockets on LT)	–	–	●	○	–
P245/40R19 (requires available Midnight Edition, Redline Edition, Sport Edition or 19" aluminum wheels on LT)	–	–	–	○	●
<b>ENGINE/CHASSIS</b>					
Engine: 1.5L turbocharged DOHC 4-cylinder with Variable Valve Timing (VVT), Direct Injection and stop/start technology; 163 hp @ 5700 rpm, 184 lb.-ft. of torque @ 2500–3000 rpm	●	●	●	●	–
2.0L turbocharged DOHC 4-cylinder with Variable Valve Timing (VVT) and Direct Injection; 250 hp @ 5300 rpm, 260 lb.-ft. of torque @ 2000–5000 rpm	–	–	–	–	●
Engine block heater	○	○	○	○	○
Stop/start technology	●	●	●	●	–
Exhaust – aluminized stainless steel	●	●	●	●	●
– single-outlet	●	●	–	●	–
– dual-outlet with bright tips	–	–	●	–	●
Transmission: Continuously Variable Transmission (CVT)	●	●	●	●	–
9-speed automatic, electronically controlled with overdrive	–	–	–	–	●

	L	LS	RS	LT	PREMIER
<b>SAFETY &amp; SECURITY</b>					
Airbags: <sup>1</sup> Frontal and knee airbags for driver and front passenger; seat-mounted side-impact airbags and head-curtain airbags for front and rear outboard seating positions; includes Passenger Sensing System for frontal passenger airbag	●	●	●	●	●
Automatic Emergency Braking <sup>2</sup> (requires available Driver Confidence I & II Package on LS, RS and LT)	–	○	○	○	–
Enhanced Automatic Emergency Braking <sup>2</sup> (requires available Enhanced Driver Confidence Package on Premier)	–	–	–	–	○
Automatic Parking Assist <sup>2</sup> (requires available Enhanced Driver Confidence Package)	–	–	–	–	○
Door locks: Manual rear door, child security	●	●	●	●	●
Following Distance Indicator <sup>2</sup> (requires available Driver Confidence I & II Package on LS, RS and LT; requires available Enhanced Driver Confidence Package on Premier)	–	○	○	○	○
Forward Collision Alert <sup>2</sup> (requires available Driver Confidence I & II Package on LS, RS and LT; requires available Enhanced Driver Confidence Package on Premier)	–	○	○	○	○
Front Pedestrian Braking <sup>2</sup> (requires available Driver Confidence I & II Package on LS, RS and LT; requires available Enhanced Driver Confidence Package on Premier)	–	○	○	○	○
Lane Change Alert with Side Blind Zone Alert <sup>2</sup> (requires available Driver Confidence I Package or Driver Confidence I & II Package on LS, RS and LT; requires available Enhanced Driver Confidence Package on Premier)	–	○	○	○	○
Lane Keep Assist with Lane Departure Warning <sup>2</sup> (requires available Driver Confidence I & II Package on LS, RS and LT; requires available Enhanced Driver Confidence Package on Premier)	–	○	○	○	○
LATCH system (Lower Anchors and Tethers for Children), for child restraint systems	●	●	●	●	●
Rear Cross Traffic Alert <sup>2</sup> (requires available Driver Confidence I Package or Driver Confidence I & II Package on LS, RS and LT; requires available Enhanced Driver Confidence Package on Premier)	–	○	○	○	○
Rear Park Assist <sup>2</sup> (requires available Driver Confidence I Package or Driver Confidence I & II Package on LS, RS and LT)	–	○	○	○	–
Rear Vision Camera <sup>2</sup>	●	●	●	●	–
HD Rear Vision Camera <sup>2</sup>	–	–	–	–	●
Teen Driver technology	–	●	●	●	●
Theft-deterrent system: Unauthorized entry	●	●	●	●	●
Tire Pressure Monitoring System with Tire Fill Alert (does not monitor spare tire, if equipped)	●	●	●	●	●
Up to 3 months of OnStar <sup>®</sup> Safety & Security coverage <sup>3</sup> which includes Automatic Crash Response, Stolen Vehicle Assistance, Emergency Services, Crisis Assist, Roadside Assistance and Turn-by-Turn Navigation <sup>4</sup>	●	●	●	●	●
<b>INTERIOR</b>					
Air conditioning: Manual, single-zone	●	●	●	–	–
Automatic, dual-zone with individual climate settings for driver and front passenger	–	–	–	●	●
Cabin air filter	●	●	●	●	●
Rear console air vents	–	–	–	●	●

**1 A NOTE ON CHILD SAFETY:** Always use seat belts and the correct child restraint for your child's age and size, even with airbags. Even in vehicles equipped with the Passenger Sensing System, children are safer when properly secured in a rear seat in the appropriate infant, child or booster seat. Never place a rear-facing infant restraint in the front seat of any vehicle equipped with an active frontal airbag. See your vehicle Owner's Manual and the child safety seat instructions for more safety information.

**2** Read the vehicle Owner's Manual for important feature limitations and information. **3** When you select a monthly plan within 30 days of activating your 1-month trial, you'll receive the first 2 months of the plan you select at no additional charge when you associate an approved payment method on file to your account and authorize recurring payments for your service plan. The amount and frequency of each recurring payment is based upon the service(s) and payment interval(s) you select from the options provided. After the trial expires, OnStar will automatically bill your payment method monthly at then-current standard monthly rates. Plans containing 4G LTE data will be billed every 30 days by AT&T. You may cancel at any time by pushing your blue OnStar button or calling 1-888-466-7827. May not be combined with other offers or retroactively applied. Offer subject to change. **4** Advisor-based Turn-by-Turn Navigation is subject to User Terms and limitations, and varies by vehicle model. Map coverage available in the United States, Puerto Rico and Canada. Availability subject to change.

## SPECIFICATIONS (CONTINUED)

● STANDARD ○ AVAILABLE – NOT AVAILABLE

	L	LS	RS	LT	PREMIER
<b>INTERIOR (CONTINUED)</b>					
Cruise control: Electronic with Set and Resume Speed	●	●	●	●	●
Adaptive Cruise Control <sup>1</sup> (requires available Enhanced Driver Confidence Package)	–	–	–	–	○
Defogger: Electric rear-window	●	●	●	●	●
Door locks: Power, programmable with lockout protection	●	●	●	●	●
Floor mats: Front and rear, carpeted	●	●	●	●	●
Driver Information Center: Monochromatic display	●	●	●	●	–
Enhanced 8-inch diagonal reconfigurable multi-color display	–	–	–	–	●
Exterior temperature display	–	●	●	●	●
Rear Seat Reminder <sup>2</sup> notification	●	●	●	●	●
Keyless Open and Start: Includes extended-range Remote Keyless Entry and panic feature	●	●	●	●	●
Mirror: Rearview, manual day/night	●	●	●	●	–
Rearview, auto-dimming (requires available Leather Package on LT)	–	–	–	○	●
Power outlet: 12-volt auxiliary	●	●	●	●	●
120-volt, on rear of center console	–	–	–	–	●
Shift knob: Leather-wrapped (requires available Leather Package on LT)	–	–	●	○	●
Steering column: Manual tilt and telescopic	●	●	●	●	●
Steering wheel: 3-spoke with mounted audio, cruise and phone controls	●	●	–	●	–
Leather-wrapped with mounted audio, cruise and phone controls (requires available Leather Package on LT)	–	–	●	○	●
Heated (requires available Leather Package on LT)	–	–	–	○	●
Remote vehicle starter system	–	○	○	●	●
Sunroof: Power, tilt-sliding, with fixed rear skylight and sunshade	–	–	–	○	●
Trunk: Cargo anchors	●	●	●	●	●
Mat	–	–	–	–	●
Windows: Power, express-down	●	●	●	●	●
Driver express-up/-down	–	–	–	●	●
<b>ENTERTAINMENT</b>					
Chevrolet Infotainment 3 system <sup>3</sup> with 8-inch diagonal color touch-screen, AM/FM stereo, Bluetooth <sup>®</sup> audio streaming <sup>4</sup> for two active devices, voice command pass-through to compatible phone, and wireless Apple CarPlay <sup>®5</sup> and wireless Android Auto <sup>™6</sup> compatibility	●	●	●	●	–
Chevrolet Infotainment 3 Plus system <sup>3</sup> with Navigation <sup>7</sup> and 8-in. diagonal HD color touch-screen, includes features listed above, available Alexa Built-In <sup>8</sup> , enhanced voice recognition, In-Vehicle Apps <sup>9</sup> and Connected Navigation <sup>10</sup>	–	–	–	–	●
Audio: 6-speaker system	●	●	●	●	–
9-speaker Bose premium system	–	–	–	–	●

	L	LS	RS	LT	PREMIER
<b>ENTERTAINMENT (CONTINUED)</b>					
Media: USB ports <sup>11</sup> one Type-A and one Type-C, and auxiliary input jack in front center stack storage area	●	●	●	●	●
USB port <sup>11</sup> charge-only, on rear of center console	–	–	–	–	●
Wireless charging <sup>12</sup>	–	–	–	–	●
SiriusXM <sup>®13</sup> – All Access Package 3-month trial subscription	–	–	–	●	●
Available 4G LTE Wi-Fi <sup>®</sup> Hotspot <sup>14</sup> for up to seven devices, includes 1 month or 3 GB of data (whichever comes first)	–	●	●	●	●
Chevrolet Connected Access <sup>15</sup> with 10 years of standard connectivity, which currently enables features such as Vehicle Diagnostics and Dealer Maintenance Notification	●	●	●	●	●
<b>PACKAGES AND SPECIAL EDITIONS</b>					
Driver Confidence I Package	–	○	○	○	–
Lane Change Alert <sup>1</sup> with Side Blind Zone Alert <sup>1</sup> , Rear Cross Traffic Alert <sup>1</sup> and Rear Park Assist <sup>1</sup> ; includes body-color mirror caps on LS	–	○	○	○	–
Driver Confidence I & II Package	–	○	○	○	–
Automatic Emergency Braking <sup>1</sup> ; Following Distance Indicator <sup>1</sup> ; Forward Collision Alert <sup>1</sup> ; Front Pedestrian Braking <sup>1</sup> ; IntelliBeam automatic high beam on/off, Lane Change Alert with Side Blind Zone Alert <sup>1</sup> ; Lane Keep Assist with Lane Departure Warning <sup>1</sup> ; Rear Cross Traffic Alert <sup>1</sup> and Rear Park Assist <sup>1</sup>	–	○	○	○	–
Leather Package	–	–	–	○	–
Leather-appointed seating surfaces, heated leather-wrapped steering wheel, leather-wrapped shift knob and inside rearview auto-dimming mirror	–	–	–	○	–
Midnight Edition	–	–	–	○	–
19" Black-painted aluminum wheels, P245/40R19 tires, Black Chevrolet bowtie emblems, Black nameplate badge and blacked-out grille with dark chrome surround (requires Mosaic Black Metallic exterior color and Jet Black interior color)	–	–	–	○	–
Redline Edition	–	–	–	○	–
19" Black-painted aluminum wheels with Red accents, P245/40R19 tires, Black Chevrolet bowtie emblems, Black nameplate badge with Red outline, blacked-out grille and Black mirror caps with Redline decals (requires Jet Black interior color; available with Summit White, Silver Ice Metallic or Mosaic Black Metallic exterior colors)	–	–	–	○	–
Sport Edition	–	–	–	○	–
19" Black-painted aluminum wheels, P245/40R19 tires, Black Chevrolet bowtie emblems, Black nameplate badge and blacked-out grille with dark chrome surround (requires Jet Black interior color)	–	–	–	○	–
Enhanced Driver Confidence Package	–	–	–	–	○
Adaptive Cruise Control <sup>1</sup> ; Automatic Parking Assist <sup>1</sup> ; Enhanced Automatic Emergency Braking <sup>1</sup> ; Following Distance Indicator <sup>1</sup> ; Forward Collision Alert <sup>1</sup> ; Front Pedestrian Braking <sup>1</sup> ; IntelliBeam automatic high beam on/off, Lane Change Alert with Side Blind Zone Alert <sup>1</sup> ; Lane Keep Assist with Lane Departure Warning <sup>1</sup> and electronic parking brake	–	–	–	–	○

<sup>1</sup> Read the vehicle Owner's Manual for important feature limitations and information. <sup>2</sup> Does not detect people or items. Always check rear seat before exiting. <sup>3</sup> Chevrolet Infotainment System functionality varies by model. Full functionality requires compatible Bluetooth and smartphone, and USB connectivity for some devices. <sup>4</sup> Go to [my.chevrolet.com/learnAbout/bluetooth](http://my.chevrolet.com/learnAbout/bluetooth) to find out which phones are compatible with the vehicle. Full Bluetooth feature functionality varies by device, model and software version. <sup>5</sup> Vehicle user interface is a product of Apple and its terms and privacy statements apply. Requires compatible iPhone and data plan rates apply. <sup>6</sup> Vehicle user interface is a product of Google and its terms and privacy statements apply. Requires the Android Auto app on Google Play and a compatible Android smartphone. Data plan rates apply. You can check which smartphones are compatible at [g.co/androidauto/requirements](http://g.co/androidauto/requirements). <sup>7</sup> Map coverage available in the United States, Puerto Rico and Canada. <sup>8</sup> Functionality is subject to limitations and varies by vehicle, infotainment system and location. Select service plan required. Certain Alexa Skills require account linking to use. Visit [onstar.com](http://onstar.com) for additional details. <sup>9</sup> Requires active service plan and paid AT&T vehicle data plan or compatible device with 3G/4G LTE tethering data plan. Visit [onstar.com](http://onstar.com) for details and limitations. <sup>10</sup> Connected Navigation and Real-time Points of Interest (POI) only available on properly equipped vehicles. Requires paid plan or trial. Map coverage available in the United States, Puerto Rico and Canada. Visit [onstar.com](http://onstar.com) for details and limitations. <sup>11</sup> Not compatible with all devices. <sup>12</sup> The system wirelessly charges one compatible mobile device. Some phones have built-in wireless charging technology and others require a special adaptor/back cover. To check for phone or other device compatibility, see [my.chevrolet.com/learn](http://my.chevrolet.com/learn) or consult your carrier. <sup>13</sup> If you decide to continue service after your trial, the subscription plan you choose will automatically renew thereafter and you will be charged according to your chosen payment method at then-current rates. Fees and taxes apply. See the SiriusXM Customer Agreement at [siriusxm.com](http://siriusxm.com) for complete terms and how to cancel. All fees, content, features and availability are subject to change. <sup>14</sup> Service varies with conditions and location. Requires active service and paid AT&T data plan. Visit [onstar.com](http://onstar.com) for details and limitations. Availability subject to change. <sup>15</sup> Standard connectivity available only to original purchaser for 10 years. Connected Access services are subject to change. Does not include emergency or security services. Diagnostic capabilities vary by model and service plan. Message and data rates may apply. Requires contact method on file and enrollment to receive alerts. Not all issues will deliver alerts. Visit [onstar.com](http://onstar.com) for details and limitations.

## DIMENSIONS

Length	194.2"	Width	73.0"	Head Room (front/rear)	39.1"/37.5"
Wheelbase	111.4"	Front Track	62.6"	Leg Room (front/rear)	41.5"/38.1"
Height	57.3"	Rear Track	62.5"	Shoulder Room (front/rear)	58.5"/57.1"

## MAXIMUM CAPACITIES

Fuel tank (approximate)	15.8 gallons
Passenger volume	102.5 cubic feet
Seating	Seats 5
Cargo volume <sup>1</sup>	15.7 cubic feet

## EPA-ESTIMATED FUEL ECONOMY

1.5L Turbo	29 MPG city/36 highway/32 combined
2.0L Turbo	22 MPG city/33 highway/26 combined



**Enroll.** It's quick, it's easy and there is no cost to join. You will automatically receive points just for enrolling.<sup>2</sup> To enroll, visit [mychevroletrewards.com](http://mychevroletrewards.com).

**Earn.** Earn points on eligible new vehicle leases or purchases, which can be redeemed toward accessories,<sup>3</sup> vehicle service and more. Plus, get points for paid service,<sup>4</sup> select OnStar<sup>®</sup> and Connected Services plans,<sup>5</sup> and many others.

**Enjoy.** Use points toward eligible accessories,<sup>3</sup> paid service, eligible new vehicles<sup>6</sup> and more. It's our way of saying thanks!



**First oil change is covered!** Experience Chevrolet Complete Care, a comprehensive coverage, limited warranty and protection program that comes standard with every new 2021 Chevrolet Malibu lease and purchase.

Simply, it is designed around you, to make it easy to help keep your Chevrolet like new — and give you the confidence you deserve. For more information, visit [chevrolet.com/complete-care](http://chevrolet.com/complete-care).

## NEW VEHICLE LIMITED WARRANTY

### Chevrolet will warrant each 2021 Malibu with:

3-year/36,000-mile<sup>8</sup> Bumper-to-Bumper Limited Warranty.

6 years/100,000 miles<sup>9</sup> of Rust-Through Protection.

5-year/60,000-mile<sup>8</sup> Powertrain Limited Warranty.

5 years/60,000 miles<sup>8</sup> of Roadside Assistance<sup>9</sup> and Courtesy Transportation.

<sup>1</sup> Cargo and load capacity limited by weight and distribution. <sup>2</sup> Must be 18 years or older. Points may be earned and redeemed only at participating GM entities, dealers or third party retailers in the United States (excluding Puerto Rico, the U.S. Virgin Islands or Guam). Points are not earned on taxes or certain fees, and expire 5 years from when points are earned. Some restrictions apply. For more information, please view full program Terms & Conditions. <sup>3</sup> Members may use the voucher on eligible Chevrolet, Buick, GMC and Cadillac Accessories purchased through a participating dealership. Voucher must be used by expiration date noted. Any unused amount of the voucher will be forfeited. <sup>4</sup> Excludes taxes, fees and body shop repair orders. It could take up to 15 days for points to post to your account. <sup>5</sup> Connected vehicle services vary by vehicle model and require working electrical system, cell reception and GPS signal. Requires active service plan. OnStar links to emergency services. Visit [onstar.com](http://onstar.com) for details and limitations. <sup>6</sup> Not compatible with some other offers, including the GM Employee Discount programs. Excludes 2020 Chevrolet Corvette. Dealer contribution may affect final consumer cost. <sup>7</sup> Maintenance visit must occur within first year of vehicle delivery. Service visit consists of ACDelco dexos1™ Full Synthetic Oil and Filter Change/Tire Rotation/MPVI. Does not include air filters. See participating dealer for other restrictions and complete details. <sup>8</sup> Whichever comes first. See dealer for details. <sup>9</sup> Roadside service provided by Allstate Roadside Services. Limitations apply.



## IMPORTANT INFORMATION

**Chevrolet Owner Center (my.chevrolet.com).** Everything you need to know. Anything you need to do. Your Chevrolet Owner Center makes it easy. Create your account today to get the most out of your new vehicle. Get special alerts and offers, schedule service, review your maintenance schedule, and view how-to videos specifically for your vehicle. All online, anytime. Visit the Owner Center today to register or take a tour.

**Engines.** Chevrolet products are equipped with engines produced by GM Global Propulsion Systems or other suppliers to GM worldwide. The engines in Chevrolet products may also be used in other GM makes and models.

**Assembly.** Chevrolet vehicles and their components are assembled or produced by different operating units of General Motors, its subsidiaries or suppliers to GM worldwide. We sometimes find it necessary to produce Chevrolet vehicles with different or differently sourced components than originally scheduled. Since some options may be unavailable when your vehicle is assembled, we suggest you verify that your vehicle includes the equipment you ordered and that, if there were changes, they are acceptable to you.

**Chevrolet Connected Services and OnStar.** Connected vehicle services vary by vehicle model and require an active service plan, working vehicle electrical system, cell reception and GPS signal. OnStar links to emergency services. Visit [onstar.com](http://onstar.com) for details and limitations.

**A note on child safety.** Always use seat belts and the correct child restraint for your child's age and size, even with airbags. Even in vehicles equipped with the Passenger Sensing System, children are safer when properly secured in a rear seat in the appropriate infant, child or booster seat. Never place a rear-facing infant restraint in the front seat of any vehicle equipped with an active frontal airbag. See your vehicle Owner's Manual and the child safety seat instructions for more safety information.

**Important words about this catalog.** We have tried to make this catalog comprehensive and factual. We reserve the right, however, to make changes at any time, without notice, in prices, colors, materials, equipment, specifications, models and availability. Specifications, dimensions, measurements, ratings and other numbers in this catalog

and other printed materials provided at the dealership or affixed to vehicles are approximations based on design and engineering drawings, prototypes and laboratory tests. Your vehicle may differ due to variations in manufacture and equipment. Since some information may have been updated since the time of printing, please check with your Chevrolet dealer for complete details. Chevrolet reserves the right to lengthen or shorten the model year for any product for any reason or to start and end model years at different times. Certain vehicle features may lose their usefulness over time due to obsolescence from technological changes. Unless otherwise noted, all claims based on GM Mid-Car Sedan segment and latest available competitive information. Excludes other GM vehicles.

**Fleet orders.** Some standard content may be deleted on fleet orders. See dealer for details.

**Chevrolet ownership experience.** Chevrolet is committed to enhancing the vehicle shopping and ownership experience through a wide array of programs. Visit [chevrolet.com](http://chevrolet.com) to build and price, find a vehicle, request a quote, compare vehicles, find financial tools or track your vehicle order. You'll also find information about 24-hour Roadside Assistance, Courtesy Transportation, Customer Assistance, GM Mobility, safety and current incentives.

**Chevrolet.com/safety.** Chevrolet is committed to helping keep you and your family safe – from the start of your journey to your destination. That's why Chevrolet vehicles offer standard and available safety and security features to help give you peace of mind.

**GMmobility.com (1-800-323-9935).** GM Mobility<sup>SM</sup> offers financial assistance for eligible adaptive equipment to make automotive travel easier for persons with disabilities or special transportation needs. To learn more about special GM Mobility offers, visit [gmmobility.com](http://gmmobility.com).

**The BuyPower Card.** The Chevrolet BuyPower Card – Every purchase you make with the BuyPower Card from Capital One\* helps you earn toward an eligible new Chevrolet, Buick, GMC or Cadillac vehicle. There's no limit on the amount you can earn or redeem, and your Earnings don't expire. Visit [chevroletbuypowercard.com/catalogs](http://chevroletbuypowercard.com/catalogs).

\* Capital One, N.A. is the issuer of the BuyPower Card. General Motors ("GM") is responsible for the operation and administration of the Earnings program.



GM, the GM logo, Chevrolet, the Chevrolet logo, and the slogans, emblems, vehicle model names, vehicle body designs and other marks appearing in this catalog are the trademarks and/or service marks of General Motors, its subsidiaries, affiliates or licensors. ©2020 OnStar LLC. All rights reserved. Sirius, XM, SiriusXM and all related marks and logos are trademarks of Sirius XM Radio Inc. Amazon, Alexa and all related marks are trademarks of Amazon.com, Inc. or its affiliates. The Bluetooth word mark is a registered trademark owned by Bluetooth SIG, Inc., and any use of such mark by Chevrolet is under license. Bose is a registered trademark of the Bose Corp.

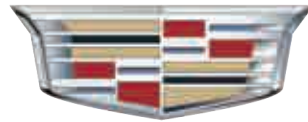
©2020 General Motors. All rights reserved. September 2020

FIND NEW ROADS™

CHEVROLET.COM



# MURRAY



*Cadillac*

**403.527.1141**

**WWW.MURRAYCHEV.CA**

**1270 TRANS CANADA WAY SE  
MEDICINE HAT, AB - T1B 1J5**