

SILVERADO 2021

CHEVROLET 



Silverado 1500 Crew Cab Short Bed
RST 4x4 in Silver Ice Metallic with
available features.



THE STRONGEST, MOST ADVANCED SILVERADO EVER.

There's over a century of science and sweat ingrained into Chevy Silverado. We've been doing this a long time, so we know what it takes. It takes strong choices: eight models with bold styling and distinct personalities, along with six powerful, advanced engines – including the smart and capable Duramax® 3.0L Turbo-Diesel I-6 engine that offers plenty of horsepower and torque and up to a maximum highway driving range of 726 miles! It takes a hardworking bed, including the new available Multi-Flex Tailgate. And it takes intuitive, purposeful technology that delivers towing confidence every day. Plus something you'll always find in Silverado: a truck that's built on a legacy of long-lasting dependability.

FIND NEW ROADS™

¹ Based on EPA-estimated 33 MPG highway for Silverado 1500 2WD with available Duramax 3.0L Turbo-Diesel I-6 engine and fuel tank capacity. Your range may be less. EPA-estimated 23 MPG city/33 highway (2WD) and 22 MPG city/26 highway (4x4).

MODELS

See pages 35–38 of this PDF for additional information on these Silverado pickups, including the most popular equipped models.

WT

When your name is Work Truck, you better be ready to bring it every day.

Its credentials start with the rock-solid power of a standard 4.3L EcoTec3 V6. Available powertrains include a 2.7L Turbo and a 5.3L EcoTec3 V8 with Active Fuel Management.[†] Its job-ready résumé is bolstered by Durabed, featuring massive cargo volume, high-strength steel and 12 standard tie-downs, with the ability to haul up to 2,280 lbs. of payload.¹ The hardworking WT interior has durable vinyl or available cloth seats and a rubberized vinyl floor for easy cleanup.



CUSTOM

Great looks. Great value. Found in one truck.

Silverado Custom steals the spotlight with body-color bumpers and center grille bar along with signature LED taillamps and 20-inch Bright Silver-painted aluminum wheels. Heated power-adjustable outside mirrors, cruise control and Remote Keyless Entry add convenience. New standard features include LED cargo area lighting, a Trailing Package, remote vehicle starter system and EZ Lift power lock and release tailgate, plus the Infotainment Package that keeps you connected and entertained as you travel.



¹ Requires Silverado 1500 Regular Cab Long Bed with available 2.7L Turbo engine. This maximum payload rating is intended for comparison purposes only. Before you buy a vehicle or use it to haul people or cargo, carefully review the Vehicle Loading section of the Owner's Manual and check the carrying capacity of your specific vehicle on the label on the inside of the driver door jamb.

MODELS

See pages 39–42 of this PDF for additional information on these Silverado pickups, including the most popular equipped models.

CUSTOM TRAIL BOSS

Trail Boss. The name says it all.

The suspension on Custom Trail Boss has a 2-inch lift right from the factory. There's also the Z71 Off-Road Package, Autotrac® 2-speed transfer case, an automatic locking rear differential and everything else you need for a day off the beaten path. Plus, you can add the 420-horsepower 6.2L EcoTec3 V8 engine when you need some extra muscle. Goodyear Wrangler DuraTrac® MT tires, a Black grille, 18-inch high-gloss Black-painted aluminum wheels and Performance Red recovery hooks¹ set this off-road warrior apart from Silverado Custom.



LT

The looks are classic. So is the capability.

LT has that essential truck appeal with chrome bumpers, center grille bar and mirror caps complemented by available 20-inch aluminum wheels with machined face and painted pockets. LED headlamps and daytime running lamps add signature enhancements. Capability comes from the high-output 2.7L Turbo or the available Duramax 3.0L Turbo-Diesel I-6 and 5.3L EcoTec3 V8 engines. Comfort and convenience come standard with heated driver and front passenger seats, 10-way power driver seat, heated steering wheel, dual-zone climate controls, and Keyless Open and Start.



¹ To prevent the risk of injury, never use recovery hooks to tow a vehicle. See the Owner's Manual for more information.

MODELS

See pages 43–46 of this PDF for additional information on these Silverado pickups, including the most popular equipped models.

RST

You'll get a second look. And a third.

RST is the sporty Silverado, with body-color bumpers, center grille bar and door handles matched with high-gloss Black mirror caps and Black Chevrolet bowtie emblems. It also includes LED headlamps, daytime running lamps, taillamps, fog lamps and cargo lamps. Available power comes from the Duramax 3.0L Turbo-Diesel I-6 or 6.2L EcoTec3 V8 engine. The interior experience is enhanced with a heated leather-wrapped steering wheel and available features such as leather-appointed front bucket seats and a power sunroof.

LT TRAIL BOSS

This boss has a taste for off-road adventure.

LT Trail Boss is one serious four-wheeling machine, with a 2-inch lift right from the factory, the Z71 Off-Road Package, Goodyear Wrangler DuraTrac® MT tires, an Autotrac 2-speed transfer case and an automatic locking rear differential. There's also the 5.3L EcoTec3 V8 engine with Dynamic Fuel Management or the available 6.2L EcoTec3 V8 and a dual-outlet exhaust with polished rectangular tips. And prepare to take some comfort along with heated front bucket seats that are standard for 2021, a 10-way power driver seat and a heated leather-wrapped steering wheel. Available features include leather-appointed front seats and a Bose premium 7-speaker sound system.



MODELS

See pages 47–50 of this PDF for additional information on these Silverado pickups, including the most popular equipped models.

LTZ

A premium truck to take on every day and night.

Chrome takes center stage on LTZ, from the grille and bumpers to the mirror caps, door handles and window molding accents. A 5.3L EcoTec3 V8 engine with Dynamic Fuel Management, power-up/-down tailgate and Advanced Trailering System are also standard. A 6.2L V8 or Duramax 3.0L Turbo-Diesel I-6 engine is available. For 2021, we've added a number of safety features to LTZ, including Front and Rear Park Assist,¹ Lane Change Alert with Side Blind Zone Alert¹ and Rear Cross Traffic Alert¹. Interior highlights include heated and ventilated perforated leather-appointed front seating, heated rear outboard seats and a power-sliding rear window.

HIGH COUNTRY

You've reached the pinnacle. Your reward is High Country, with more standard features than any other Silverado.

An exclusive grille with a two-tone bronze and chrome finish makes a bold design statement. High-intensity LED headlamps with signature curtain LED daytime running lamps complete the look. Powerful gas and diesel engines are available. Front and rear perforated leather seating surfaces elevate the luxury. Available enhancements include the Technology Package, which offers 8 cameras that give you up to 15 unique views;² 22-inch polished-aluminum wheels, Adaptive Cruise Control¹ and an Adaptive Ride Control suspension.



Vehicle shown with available Chevrolet Accessories.³



Vehicle shown with available 22-inch wheels and Chevrolet Accessories.³

¹ Read the vehicle Owner's Manual for important feature limitations and information. ² Some camera views require available accessory camera and installation. Not compatible with all trailers. Customers can see their dealer for full details. Read the vehicle Owner's Manual for important feature limitations and information. ³ Chevrolet Accessories are dealer-installed and covered by the GM 3-year/36,000-mile (whichever comes first) New Vehicle Limited Warranty when ordered with your new Silverado. See your dealer for details.

SPECIAL EDITIONS

RALLY EDITION

Prepare to be the center of attention.

With the Rally Edition¹ offered on Custom and RST, stars are standard. Black highlights are everywhere, including the hood and tailgate rally stripes, badging, tailgate lettering and exhaust tip(s). Custom Rally adds a Black bowtie on the grille and steering wheel as well as 20-inch high-gloss Black-painted aluminum wheels. RST Rally brings the heat with 22-inch high-gloss Black-painted aluminum wheels.



Vehicle shown with available Chevrolet Accessories.⁴

REDLINE

Put it all on the line.

Be bold with the street-inspired Redline Edition² available on RST. The tone is set with 20-inch high-gloss Black-painted aluminum wheels with Red accents, Red recovery hooks,³ a Black RST badge and a Black Silverado badge with a Red outline. Outside rearview mirrors feature Red accents, while the door handles and grille center bar are high-gloss Black. High-intensity LED headlamps with dark bezels are also included, along with a dual-outlet exhaust with Black rectangular tips and Black Chevrolet tailgate lettering. Late availability.



Vehicle shown with available Chevrolet Accessories.⁴

¹ Available with Summit White, Silver Ice Metallic, Red Hot or Black exterior colors. ² Available with Summit White, Silver Ice Metallic or Black exterior colors. ³ To avoid the risk of injury, never use recovery hooks to tow a vehicle. See the Owner's Manual for more information. ⁴ Chevrolet Accessories are dealer-installed and covered by the GM 3-year/36,000-mile (whichever comes first) New Vehicle Limited Warranty when ordered with your new Silverado. See your dealer for details.

SPECIAL EDITIONS

REALTREE

You wanna step outside?

The Realtree® Edition¹ on Custom Trail Boss is built for the outdoors. Realtree exterior graphics draw attention, as do a 2-inch factory lift and 18-inch high-gloss Black-painted aluminum wheels with Goodyear Wrangler DuraTrac® MT tires. But it doesn't end there. A Chevytec spray-on bedliner with the Realtree logo, a dual-outlet exhaust with Black rectangular tips, and Black Silverado, Z71 and Custom badging add an adventurous attitude. The theme continues with an exclusive Realtree interior that features camo door trim. Late availability.



Vehicle shown with available 20-inch wheels and Chevrolet Accessories²

TRAIL BOSS WITH MIDNIGHT EDITION

This truck is always ready for a night out.

The Midnight Edition is offered on Custom Trail Boss and LT Trail Boss. The darkness falls with a Black exterior complemented by Black Silverado and trim badging on the tailgate and a dual-outlet exhaust with Black rectangular tips. LT Trail Boss also adds high-intensity LED headlamps with dark bezels. As if that weren't enough, 20-inch high-gloss Black-painted aluminum wheels and new Goodyear Wrangler® Territory MT tires are available.



¹ Available with Summit White, Oxford Brown Metallic or Black exterior colors. ² Chevrolet Accessories are dealer-installed and covered by the GM 3-year/36,000-mile (whichever comes first) New Vehicle Limited Warranty when ordered with your new Silverado. See your dealer for details.

IT STARTS WITH A STRONG BACKBONE.

Silverado uses the right material in the right place to do the right job. That means high-strength steel in the frame, bed and safety cage and strong, lightweight aluminum in the doors, hood and tailgate, with everything optimized for durability, safety, mass and function.

The **frame is light**, but has great torsional rigidity. As much as 80% of the frame is made of high-strength steel.

Even with a long wheelbase, a wide, tall stance, and loads of cargo volume, Silverado is impressively aerodynamic. That's because Chevrolet engineers spent over 500 hours in the wind tunnel, testing airflow around the vehicle. All this testing paid off: Silverado is the most aerodynamic full-size pickup in Chevrolet history.



The **independent short/long arm front suspension** provides excellent wheel alignment, ride comfort and tunability with reduced weight. The live axle rear suspension includes 2-stage, semi-elliptic multileaf springs to strike a balance between payload management and ride quality.

Silverado 4x4 models offer **two Autotrac transfer cases**. The 2-speed

transfer case (standard on Trail Boss models and High Country; included with the Z71 Off-Road Package on other models) features Auto, 2 High, 4 High and 4 Low settings. The single-speed transfer case (standard on WT, Custom, LT, RST and LTZ) offers Auto, 2 High and 4 High. It also includes a Driver Mode Selector with Terrain mode, designed to optimize low-speed off-road driving.

The available **Driver Mode Selector** allows you to choose different drive modes (based on the vehicle's equipment) that alter the throttle and traction systems to better handle varying road conditions.

Normal is for everyday driving; Sport is useful during quick driving maneuvers; Tow/Haul aids in trailering; Snow is helpful in slippery conditions; Terrain

optimizes low-speed driving over rough terrain; and Off-Road helps on grass, gravel, dirt and snow-covered roads.

An **electro-hydraulic boost** or "e-boost" system produces on-demand power for smooth, reliable, consistent braking whether the truck is loaded, unloaded or hauling a heavy trailer. And the Duralife® coating helps increase rotor life.

SMART AND CAPABLE.

The available Duramax 3.0L Turbo-Diesel I-6 engine helps Silverado offer **outstanding fuel economy¹ and plenty of power.**

It's smart. An inherently balanced inline-six design reduces internal parts for more efficient operation. Paired with a 10-speed transmission, this helps Silverado offer an EPA-estimated 23 MPG city and 33 highway!¹ Silverado Diesel models feature advanced combustion technology that optimizes performance and efficiency while reducing noise.

It's capable. Efficiency comes with uncompromised power, because this diesel provides 277 horsepower to go with 460 lb.-ft. of torque. It also offers 2WD towing of up to 9,500 lbs.^{2,3} and impressive responsiveness throughout the power band.



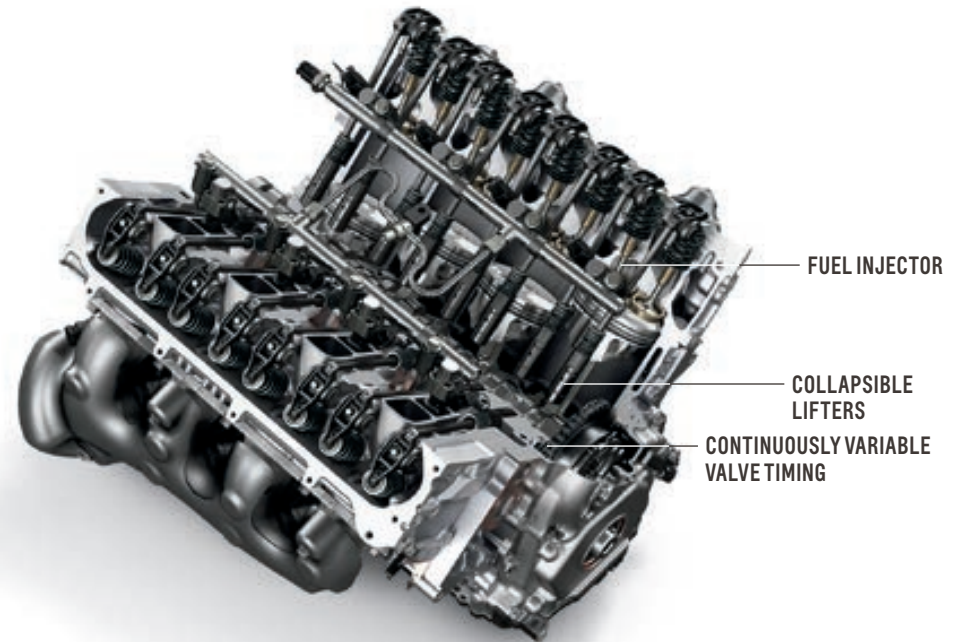
¹ EPA-estimated 23 MPG city/33 highway (2WD). EPA-estimated 22 MPG city/26 highway (4x4). ² Before you buy a vehicle or use it for trailering, carefully review the Trailering section of the Owner's Manual. The weight of passengers, cargo and options or accessories may reduce the amount you can tow. ³ Requires Silverado 1500 Double Cab Standard Bed 2WD or Crew Cab Short Bed 2WD.

POWERTRAIN

Dynamic Fuel Management System.
6.2L V8 engine shown.

Silverado offers six different engines that were specifically designed for trucks. The available 2.7L Turbo engine generates 310 horsepower and 348 lb.-ft. of torque with minimal turbo lag and off-the-line acceleration that takes you from 0 to 60 in 6.8 seconds! And the available Duramax 3.0L Turbo-Diesel I-6 engine offers impressive city and highway fuel efficiency² combined with all the power and torque you need.

Dynamic Fuel Management is a sophisticated control system that monitors every movement of the accelerator pedal and calculates exactly how much torque is needed to handle the current driving condition. Nearly instantaneously, the system will activate or deactivate cylinders to maximize fuel economy³ and create the power needed. Included on the 5.3L EcoTec3 V8 with 8- and 10-speed transmissions and the available 6.2L EcoTec3 V8.



2.7L TURBO (L3B)	3.0L TURBO-DIESEL I-6 (LM2)	4.3L ECOTEC3 V6 (LV3)	5.3L ECOTEC3 V8 (L82)	5.3L ECOTEC3 V8 (L84)	6.2L ECOTEC3 V8 (L87)
ACTIVE FUEL MANAGEMENT	DIESEL EXHAUST BRAKE SYSTEM	ACTIVE FUEL MANAGEMENT	ACTIVE FUEL MANAGEMENT	DYNAMIC FUEL MANAGEMENT	DYNAMIC FUEL MANAGEMENT
310 HP @ 5600 RPM	277 HP @ 3750 RPM	285 HP @ 5300 RPM	355 HP @ 5600 RPM	355 HP @ 5600 RPM	420 HP @ 5600 RPM
348 LB.-FT. TORQUE @ 1500 RPM	460 LB.-FT. TORQUE @ 1500 RPM	305 LB.-FT. TORQUE @ 3900 RPM	383 LB.-FT. TORQUE @ 4100 RPM	383 LB.-FT. TORQUE @ 4100 RPM	460 LB.-FT. TORQUE @ 4100 RPM
9,600 LBS. MAX TOWING CAPABILITY^{4,5}	9,500 LBS. MAX TOWING CAPABILITY^{4,6}	7,900 LBS. MAX TOWING CAPABILITY^{4,5}	10,900 LBS. MAX TOWING CAPABILITY^{4,7}	11,500 LBS. MAX TOWING CAPABILITY^{4,8}	13,300 LBS. MAX TOWING CAPABILITY^{4,9}
20 MPG CITY/ 23 HIGHWAY¹⁰	23 MPG CITY/ 33 HIGHWAY²	16 MPG CITY/ 21 HIGHWAY¹¹	15 MPG CITY/ 21 HIGHWAY¹¹	17 MPG CITY/ 23 HIGHWAY¹²	16 MPG CITY/ 21 HIGHWAY¹³

¹ Based on initial vehicle movement. ² EPA-estimated 23 MPG city/33 highway (2WD). EPA-estimated 22 MPG city/26 highway (4x4). ³ EPA-estimated MPG city/highway: 17/23 (2WD), 16/22 (4x4), 16/21 (Trail Boss 4x4 with 5.3L V8 engine), 16/21 (4x4 with 6.2L V8 engine), 15/19 (Trail Boss 4x4 with 6.2L V8 engine). ⁴ Before you buy a vehicle or use it for trailering, carefully review the Trailering section of the Owner's Manual. The weight of passengers, cargo and options or accessories may reduce the amount you can tow. ⁵ Requires Silverado 1500 Regular Cab Long Bed 2WD. ⁶ Requires Silverado 1500 Double Cab Standard Bed 2WD or Crew Cab Short Bed 2WD. ⁷ Requires Silverado 1500 Crew Cab Short Bed Custom 4x4 with available Custom Max Trailering Package. ⁸ Requires available Max Trailering Package and Silverado 1500 Double Cab Standard Bed 2WD or Crew Cab Short Bed 2WD. ⁹ Requires Silverado 1500 Double Cab Standard Bed RST 4x4 with available Max Trailering Package and 20-inch wheels. ¹⁰ EPA estimated 2WD. EPA-estimated 19 MPG city/22 highway (4x4). ¹¹ EPA estimated 2WD. EPA-estimated 15 MPG city/20 highway (4x4), 14 MPG city/18 highway (Trail Boss 4x4). ¹² EPA estimated 2WD. EPA-estimated 16 MPG city/22 highway (4x4), 16 MPG city/21 highway (Trail Boss 4x4). ¹³ EPA estimated 4x4. EPA-estimated 15 MPG city/19 highway (Trail Boss 4x4).

DURABED



Durabed is designed to help you get more done, with a **roll-formed high-strength steel floor** that's stronger, lighter and more durable than a traditional stamped steel floor.

The cargo area is longer, deeper and wider than ever before, with **12 standard tie-downs**, nine more available removable tie-downs from Chevrolet Accessories, and a large CornerStep rear bumper.

Durabed offers **89.1 cubic feet¹ of cargo volume on Long Bed**, 71.7 cubic feet¹ on Standard Bed and 62.9 cubic feet¹ on Short Bed.

Available **LED cargo area and perimeter lighting** includes corner pillar lamps angled toward the front of the bed, cab-mounted cargo lamps, hitch-area lighting and exterior mirror lamps for excellent all-around light coverage.

¹ Cargo and load capacity limited by weight and distribution.

DURABED

Available LED cargo area lighting and perimeter lighting.

Power-up/-down tailgate is standard on LTZ and High Country. Available on LT, RST and LT Trail Boss.

Large CornerStep rear bumper.

Available household-type bed-mounted 120-volt outlet.



MULTI-FLEX TAILGATE

MULTIPLE FUNCTIONS FROM ONE FLEXIBLE TAILGATE.

We've built a tailgate for those who don't mind working harder, but always like working smarter.

The new **Multi-Flex Tailgate** can be ordered on all eight trim levels and offers six different functions that are designed to help improve loading, unloading and accessing the cargo bed.

1 Primary Gate. Opens from the key fob, a switch inside the truck or a button on the gate.

2 Primary Gate Load Stop. Helps prevent extra-long items from sliding out of the bed.

3 Easy Access. The inner gate folds down, allowing you to reach farther into the bed.

4 Full-Width Step. The inner gate folds into a large step for easy access and is capable of holding up to 375 lbs.

5 Inner Gate Load Stop. Helps prevent second-tier items from sliding out of the bed.

6 Inner Gate with Work Surface. When opened, provides a place for a laptop or blueprints, as well as second-tier loading.



1 Primary Gate



2 Primary Gate Load Stop



3 Easy Access



4 Full-Width Step



5 Inner Gate Load Stop



6 Inner Gate with Work Surface



TRAILERING

Silverado 1500 Crew Cab Short Bed
High Country 4x4 in Iridescent Pearl
Tricoat (extra-cost color) with
available features.

CONFIDENCE IS KEY.

- Silverado offers integrated towing technology that delivers confidence and makes hauling big loads easy.
- The available Advanced Trailering Package includes Hitch Guidance with Hitch View,¹ hitch area lighting, electric parking brake hookup assist, an integrated trailer brake controller, trailer theft alert, an in-vehicle Advanced Trailering System with myChevrolet Mobile App² and more.
- The available Advanced Trailering System has an In-Vehicle App³ that offers customized trailer profiles. Other available features include predeparture checklists, trailer lighting diagnostics and trailer tire pressure/temperature monitoring⁴.
- New features include Jack-Knife Alert,⁵ Trailer Angle Indicator⁵ and Trailer Length Indicator,⁵ which require a compatible trailer, as well as Bed View with Cargo Bed Zoom and Bed Hitch Guidance!



¹ Read the vehicle Owner's Manual for important feature limitations and information. ² Available on select Apple and Android devices. Service availability, features and functionality vary by vehicle, vehicle equipment, trim level, device and the plan you are enrolled in. Some features may require a working electrical system. User terms apply. Device data connection required. Visit onstar.com for details and limitations. ³ App functionality and features vary with vehicle equipment and trim level. Data connection may be required. Some features require active service plan and working electrical system. User terms and limitations apply. ⁴ Requires available Trailer Tire Pressure Monitor Sensors. ⁵ Some camera views require available accessory camera and installation. Not compatible with all trailers. Customers can see their dealer for full details. Read the vehicle Owner's Manual for important feature limitations and information.

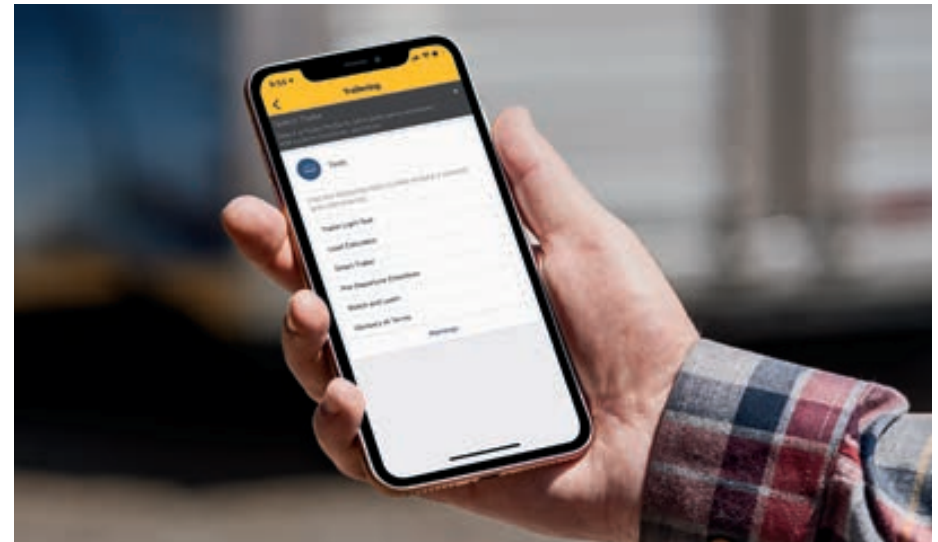
TRAILERING

An integrated trailer brake controller is available.

Available Trailer Tire Pressure Monitoring System also checks tire temperature!¹

Jack-Knife Alert warning² (requires a compatible trailer) is included with the available Technology Package.

myChevrolet Mobile App with Trailing³ syncs with the available Advanced Trailing System.



¹ Requires available Trailer Tire Pressure Monitor Sensors. ² Some camera views require available accessory camera and installation. Not compatible with all trailers. Customers can see their dealer for full details. Read the vehicle Owner's Manual for important feature limitations and information. ³ Available on select Apple and Android devices. Service availability, features and functionality vary by vehicle, vehicle equipment, trim level, device and the plan you are enrolled in. Some features may require a working electrical system. User terms apply. Device data connection required. Visit onstar.com for details and limitations.

CAMERA TECHNOLOGIES

CAMERA VIEWS TO HELP YOU TOW WITH CONFIDENCE.

You know Silverado has the legendary power to handle heavy loads. But towing isn't about power alone. Silverado offers 8 available cameras that give you up to 15 unique views. And new for 2021, Silverado offers additional dynamic trailering features like available Jack-Knife Alert¹, Trailer Length Indicator¹ and Trailer Angle Indicator with Guidelines¹, which require a compatible trailer, as well as Bed View with Cargo Bed Zoom and Bed Hitch Guidance – all designed to help make your towing job easier from start to finish. From hitching to driving to parking, these features can help improve your ability to move your loads.

Safety or driver assistance features are no substitute for the driver's responsibility to operate the vehicle in a safe manner. The driver should remain attentive to traffic, surroundings and road conditions at all times. Visibility, weather and road conditions may affect feature performance. Read the vehicle Owner's Manual for more important feature limitations and information. Some camera views require available accessory camera and installation. Not compatible with all trailers. See your dealer for details.

¹ Requires available Chevrolet Accessory Camera and installation. Not compatible with all trailers. Customers can see their dealer for full details.



Rear Side View (Turn Signal Activated) With a compatible trailer attached and a turn signal activated, this view will show a full screen down the side of the truck along with a Trailer Length Indicator¹ to aid in lane-change maneuvers by visually showing obstructions with the trailer in adjacent lanes.



Transparent Trailer View¹ Allows the driver to virtually “see through” a compatible trailer.



Front Side View Shows the position of the front tires when parking and during tight maneuvers.



Rear Side View Provides a line of sight down each side of the truck and trailer via a split screen. This view is available while in Drive or Reverse and includes a turn signal-activated biasing view and a Trailer Length Indicator¹.

Silverado 1500 Crew Cab Short Bed
High Country 4x4 in Oxford Brown
Metallic with available features.



CAMERA TECHNOLOGIES

Safety or driver assistance features are no substitute for the driver's responsibility to operate the vehicle in a safe manner. The driver should remain attentive to traffic, surroundings and road conditions at all times. Visibility, weather and road conditions may affect feature performance. Read the vehicle Owner's Manual for more important feature limitations and information. Some camera views require available accessory camera and installation. Not compatible with all trailers. See your dealer for details.



Front Camera View Displays a view in front of the truck with available guidelines to assist with parking and tight maneuvers.



Rear Camera View Displays a view behind the truck with available guidelines to assist with parking and tight maneuvers or to hitch a trailer.



Surround View Gives a top-down bird's-eye view of the truck's surroundings.



Front Top-Down View Provides a top-down view of the hood, bumper and front tires for tight maneuvers in parking lots or along curbs. Includes guidelines that can be turned on or off as necessary.



Rear Top-Down View Shows the clearance between the truck bed and nearby objects.



Bowl View Provides a rear-facing 3-D surround view, useful for low-speed backing maneuvers.

CAMERA TECHNOLOGIES

Safety or driver assistance features are no substitute for the driver's responsibility to operate the vehicle in a safe manner. The driver should remain attentive to traffic, surroundings and road conditions at all times. Visibility, weather and road conditions may affect feature performance. Read the vehicle Owner's Manual for more important feature limitations and information. Some camera views require available accessory camera and installation. Not compatible with all trailers. See your dealer for details.

¹ Requires available Chevrolet Accessory Camera and installation. Customers can see their dealer for full details.

² Requires available Chevrolet Accessory Camera and installation. Not compatible with all trailers. Customers can see their dealer for full details.



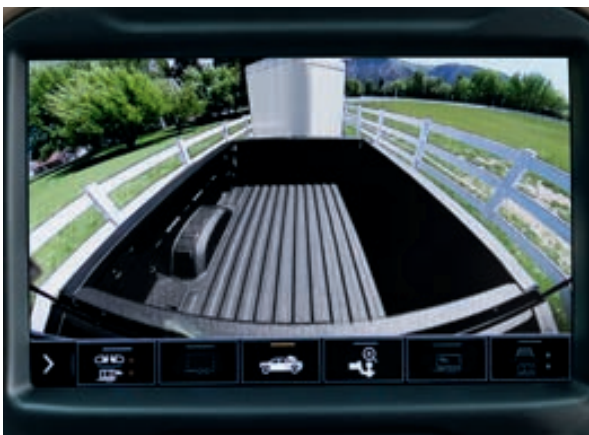
Hitch View Provides a close-up view of the receiver hitch to help with alignment when connecting to a trailer.



Inside Trailer View¹ Allows the driver to monitor trailer contents or cargo using an available Chevrolet Accessory Camera that can be installed in the trailer.



Pic-In-Pic Side View¹ Combines two views – the Rear Side View and the Rear Trailer View. Requires available Chevrolet Accessory Camera.



Bed View Allows you to see the cargo bed to help with fifth-wheel or gooseneck hitching or to briefly check on cargo. Cargo Bed Zoom and Bed Hitch Guidance are new additions for the 2021 model year.



Rear Trailer View¹ Uses an available accessory camera to show objects behind a compatible trailer. Trailer Angle Indicator² with Trailer Guidelines² shows your current path. A second set of guidelines shows where the trailer will go based on steering inputs.



Rear Camera Mirror An available dual-function camera-based rearview mirror that provides a wider, less-obstructed field of view than a traditional rearview mirror.

OFF-ROAD CAPABILITY



Z71 OFF-ROAD PACKAGE

This legendary package contains everything you need to leave the paved roads behind.

- An Autotrac 2-speed transfer case, off-road jounce bumpers, twin-tube shocks (monotube shocks on Trail Boss), a metal underbody shield, a heavy-duty air filter, an industry-first air filter monitor, all-terrain tires, Hill Descent Control and more.
- An automatic locking rear differential reacts in milliseconds to low-traction situations for improved forward motion.
- Available on almost every Silverado (standard on Trail Boss models; not available on Custom).

TRAIL BOSS ESSENTIALS

Both Custom Trail Boss and LT Trail Boss start with the Z71 Off-Road Package. But they're ready to take it farther off the beaten path with the following:

- 2-inch lift right from the factory to maximize approach, breakover and departure angles.
- 18-inch high-gloss Black-painted aluminum wheels with Goodyear Wrangler DuraTrac® MT tires, an Autotrac 2-speed transfer case, an automatic locking rear differential and a Trailering Package.
- New for 2021, 20-inch high-gloss Black-painted aluminum wheels and Goodyear Wrangler® Territory MT tires are available.

Silverado 1500 Crew Cab Short Bed LT Trail Boss 4x4 in Red Hot with available features and Chevrolet Accessories!¹

¹ Chevrolet Accessories are dealer-installed and covered by the GM 3-year/36,000-mile (whichever comes first) New Vehicle Limited Warranty when ordered with your new Silverado. See your dealer for details.

OFF-ROAD CAPABILITY

Silverado 1500 Crew Cab
Short Bed Custom Trail Boss 4x4
in Summit White.



CUSTOM TRAIL BOSS

- 285-horsepower 4.3L EcoTec3 V6 engine and the available 355-horsepower 5.3L V8 with a 6-speed transmission. Or the available 420-horsepower 6.2L V8 with 10-speed transmission.
- Black grille, 18-inch high-gloss Black-painted aluminum wheels and Performance Red recovery hooks¹
- LED taillamps, LED cargo area lighting, EZ Lift power lock and release tailgate, and remote vehicle starter system.

LT TRAIL BOSS

- 5.3L EcoTec3 V8 engine with Dynamic Fuel Management or available 6.2L EcoTec3 V8 – both with a 10-speed automatic transmission.
- Dual-outlet exhaust with polished rectangular tips and an auxiliary external transmission oil cooler.
- Black Chevrolet bowtie emblem, high-gloss Black mesh grille inserts, mirror caps and door handles, and LED headlamps and fog lamps.
- Heated front bucket seats, heated leather-wrapped steering wheel, Keyless Open and Start and all-weather Z71 floor liners.

¹ To avoid the risk of injury, never use recovery hooks to tow a vehicle. See the Owner's Manual for more information.



INTERIOR DESIGN

High Country interior in Jet Black with Umber accents and available features.

ROOM FOR THE WHOLE CREW.

- Large exterior proportions allow for an expanded interior cabin, which contributes to ample head room and leg room.
- Front seating position provides a commanding view of the road.
- Rear outboard seatback compartments allow items like small laptops to be hidden from view. A storage bin found below the rear seat cushion is versatile enough to store both long and tall items. Standard on LTZ and High Country.
- Every Double Cab and Crew Cab model features a nearly flat load floor, large rear door openings and low stepover height that help accommodate both cargo and passengers.
- Rear-seat heating and cooling vents are standard in Double Cab and Crew Cab models.

INTERIOR DESIGN



High Country interior in Jet Black with Umber accents and available features.

You can look forward to a **quiet cabin**, with acoustic panels located in fixed seatbacks to help dampen noise and reduce squeaks and dissipative carpet technology that absorbs sound.

The perfect truck interior has to work for you, with everything easy to see, reach and use. Large buttons and

knobs can be adjusted even with gloved hands, and durable materials are found throughout.

Upper and lower glove boxes provide space for flashlights, work papers, manuals and more, while an available lighted center console storage compartment below the armrest doubles as a filing cabinet.

Open compartments on either side of the console are ideal for umbrellas or even a small tablet. A storage pad on top of the instrument panel is just the right size for holding your smartphone. Plus, three cup holders are available in the front.

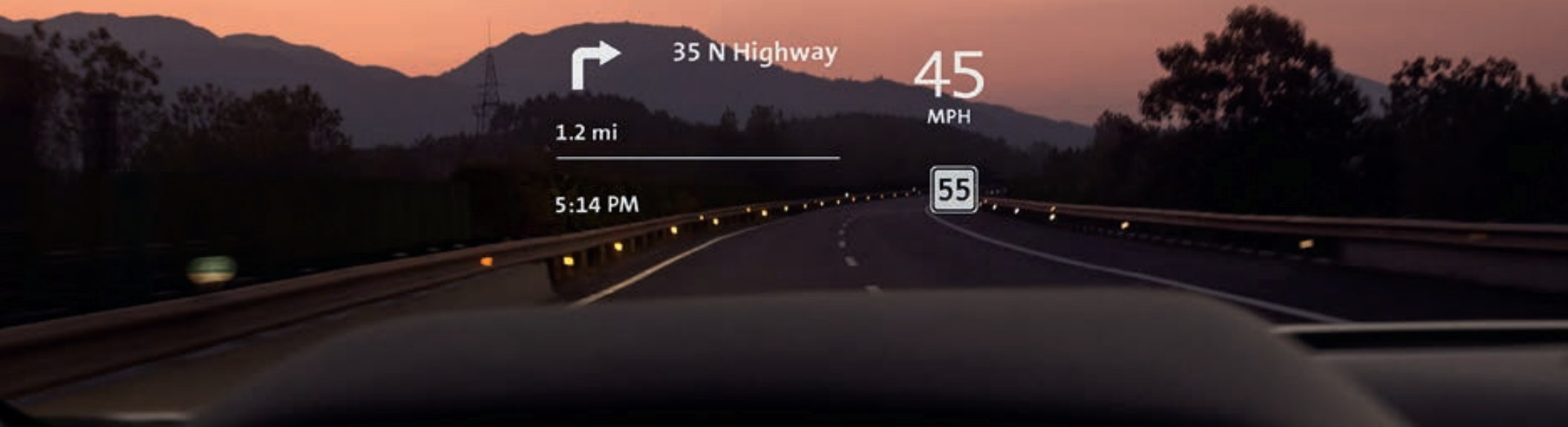
An available **Bose premium 7-speaker sound system** brings music to life

with four door speakers, plus two instrument panel tweeters and a bass box in the console.

Under certain conditions, when a second-row door is opened and closed during or just before a trip, the **Rear Seat Reminder¹** feature alerts you to double-check for valuables left behind.

¹ Does not detect people or items. Always check rear seat before exiting.

TECHNOLOGY



CONNECTED AND IN CONTROL.

- Available 15-inch diagonal multi-color Head-Up Display projects critical data onto the windshield to help you keep your eyes on the road.
- The Chevrolet Infotainment 3 system¹ is intuitive and easy to use, with a 7-inch or 8-inch diagonal color touch-screen display, fast response and enhanced voice recognition.
- With available Alexa Built-In², you can use voice commands to stream your favorite music, get directions, make calls, change your radio station and more – on the go.
- In Silverado, a 4-display experience is possible with the available color touch-screen, multi-color Driver Information Center, Rear Camera Mirror³ and multi-color Head-Up Display.



¹ Chevrolet Infotainment System functionality varies by model. Full functionality requires compatible Bluetooth and smartphone, and USB connectivity for some devices. ² Functionality is subject to limitations and varies by vehicle, infotainment system and location. Select service plan required. Certain Alexa Skills require account linking to use. Amazon, Alexa and all related logos and motion marks are trademarks of Amazon.com, Inc. or its affiliates. Visit onstar.com for additional details. ³ Read the vehicle Owner's Manual for important feature limitations and information.

TECHNOLOGY

Available features include up to six USB ports¹ and a 120-volt power outlet.

Available wireless Apple CarPlay^{®2} (shown) and wireless Android Auto^{™3} compatibility.

Teen Driver technology.

Available Chevrolet Infotainment 3 Premium system⁴ with Navigation⁵



¹ Not compatible with all devices. ² Vehicle user interface is a product of Apple and its terms and privacy statements apply. Requires compatible iPhone and data plan rates apply. ³ Vehicle user interface is a product of Google and its terms and privacy statements apply. Requires the Android Auto app on Google Play and a compatible Android smartphone. Data plan rates apply. You can check which smartphones are compatible at g.co/androidauto/requirements. ⁴ Chevrolet Infotainment System functionality varies by model. Full functionality requires compatible Bluetooth and smartphone, and USB connectivity for some devices. ⁵ Map coverage available in the United States, Puerto Rico and Canada.

Apple CarPlay, iPhone, Siri and Apple Music are trademarks of Apple Inc., registered in the U.S. and other countries. Android and Android Auto are trademarks of Google LLC.

SAFE IS THE NEW STRONG.



Adaptive Cruise Control. While you steer, this feature can automatically maintain a driver-selected gap time from the detected vehicle you're following. Available on LTZ and High Country.



Front Pedestrian Braking. At speeds below 50 mph, this feature can help you avoid or reduce the severity of a front-end collision with a pedestrian it detects directly in front of you. It provides pedestrian alerts and can even automatically provide hard emergency braking or enhance the driver's hard braking. Limited nighttime and low-visibility performance. Available on WT, Custom, Custom Trail Boss, LTZ and High Country.



Automatic Emergency Braking. At speeds below 50 mph, this feature works with Forward Collision Alert to help you avoid or reduce the severity of a front-end collision with a detected vehicle you're following by automatically providing hard emergency braking or enhancing the driver's hard braking. Available on WT, Custom, Custom Trail Boss, LTZ and High Country.



Lane Keep Assist with Lane Departure Warning. Uses a brief, gentle steering wheel turn to alert you when you may be unintentionally drifting out of detected lane lines, so you can steer to stay safely in your lane. If needed, you may receive additional Lane Departure Warning alerts. System alerts do not occur if you are using your turn signal or it detects that you may be intentionally leaving your lane. Available on LTZ and High Country.



Lane Change Alert with Side Blind Zone Alert. This feature can provide side mirror visual alerts when a detected moving vehicle is quickly approaching or is in your side blind zone. Standard on LTZ and High Country; available on WT, LT, RST and LT Trail Boss.



Forward Collision Alert. Can warn you if it detects a potential front-end collision with a vehicle you're following. It can also provide a tailgating alert if you're following much too closely. Available on WT, Custom, Custom Trail Boss, LTZ and High Country.



Following Distance Indicator. This feature can display the gap time in seconds between your vehicle and a detected vehicle you're following. Available on LTZ and High Country.



Rear Vision Camera. This feature provides an image of the area directly behind your vehicle when traveling in Reverse at low speeds. An HD version is included on LTZ and High Country.



Rear Cross Traffic Alert. This feature can warn you of detected left or right cross traffic behind your Silverado when in Reverse. Standard on LTZ and High Country; available on WT, LT, RST and LT Trail Boss.



Front and Rear Park Assist. Front and Rear Park Assist can provide distance alerts to nearby detected objects in front of or behind your vehicle to help you park and avoid collisions at low speeds. Standard on LTZ and High Country; available on WT, LT, RST and LT Trail Boss.



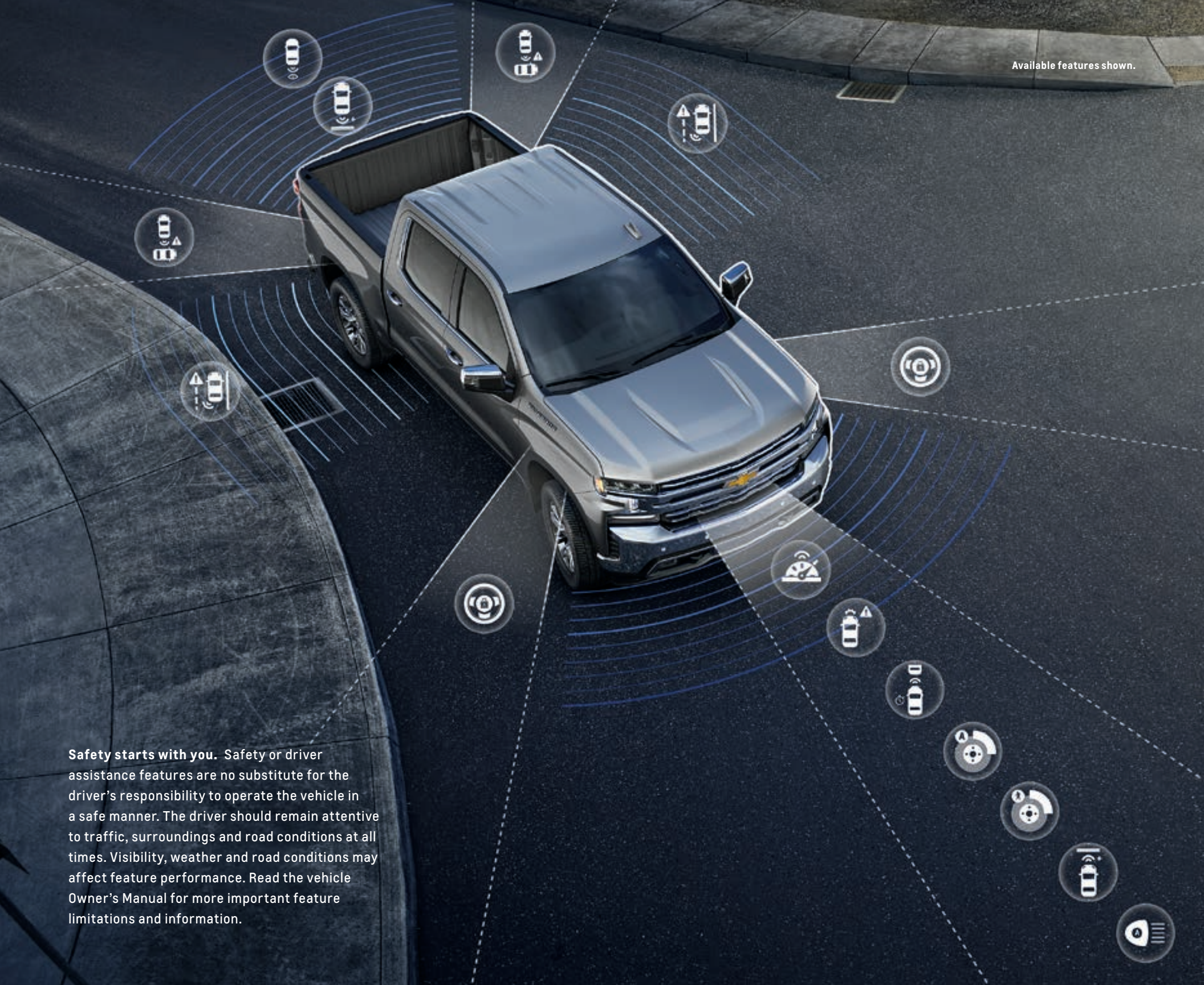
IntelliBeam®. Can automatically turn the vehicle's high-beam headlamps on and off according to surrounding traffic conditions. Available on LTZ and High Country.



Safety Alert Seat. Safety Alert Seat uses driver-seat vibration pulses on the left, right or both sides to help you identify the direction of potential crashes so you can quickly take action. You can also switch to beeping crash avoidance alerts. Available on LTZ and High Country.

Available features shown.

Safety starts with you. Safety or driver assistance features are no substitute for the driver's responsibility to operate the vehicle in a safe manner. The driver should remain attentive to traffic, surroundings and road conditions at all times. Visibility, weather and road conditions may affect feature performance. Read the vehicle Owner's Manual for more important feature limitations and information.



TRUCK LEGENDS

At left: Silverado 1500 Crew Cab Short Bed LT 4x4 in Cherry Red Tintcoat (extra-cost color) with available features and Chevrolet Accessories!
At right: Vintage 1971 Chevrolet C20 Custom Pickup.



When you've been building pickups for over 100 years, one thing you learn is there's a story behind every truck. And we want to hear yours. Chevy Truck Legends honors our dependable, long-lasting trucks and the people who

keep them going strong. If you have purchased or leased more than one eligible new Chevy truck in your lifetime or have driven one over 100,000 miles, you're a legend. Go to chevytrucklegends.com to find

your eligible truck and discover the benefits that come with membership. Explore the galleries and read about the relationship owners have with their Chevy trucks.

¹ Chevrolet Accessories are dealer-installed and covered by the GM 3-year/36,000-mile (whichever comes first) New Vehicle Limited Warranty when ordered with your new Silverado. See your dealer for details.

ACCESSORIES



¹ Chevrolet Accessories are dealer-installed and covered by the GM 3-year/36,000-mile (whichever comes first) New Vehicle Limited Warranty when ordered with your new Silverado. See your dealer for details.

ACCESSORIES



Silverado 1500 Crew Cab Short Bed Custom Trail Boss in Summit White with dealer-installed Bedside Decal with Chevrolet Bowtie, Tubular Nudge Bar, Work Step Assist Steps and Sport Bar from Chevrolet Accessories!



22" High-Gloss Black-Painted Aluminum Wheels available from Chevrolet Accessories¹



22" 6-Spoke Polished Finish Aluminum Wheels available from Chevrolet Accessories¹



22" Bright Chrome Aluminum Wheels available from Chevrolet Accessories¹



22" Low-Gloss Black Wheels with Machined Accents available from Chevrolet Accessories¹

¹ Chevrolet Accessories are dealer-installed and covered by the GM 3-year/36,000-mile (whichever comes first) New Vehicle Limited Warranty when ordered with your new Silverado. See your dealer for details.

MODEL AVAILABILITY

● STANDARD – NOT AVAILABLE

REGULAR CAB – LONG BED



TRIM	STANDARD ENGINE	AVAILABLE ENGINES	2WD	4x4
WT	4.3L EcoTec3 V6 (LV3)	2.7L Turbo (L3B), 5.3L EcoTec3 V8 (L82)	●	●

DOUBLE CAB – STANDARD BED



TRIM	STANDARD ENGINE	AVAILABLE ENGINES	2WD	4x4
WT	4.3L EcoTec3 V6 (LV3)	2.7L Turbo (L3B), 5.3L EcoTec3 V8 (L82)	●	●
Custom	4.3L EcoTec3 V6 (LV3) ¹	2.7L Turbo (L3B), 5.3L EcoTec3 V8 (L82) ¹	●	●
LT	2.7L Turbo (L3B)	5.3L EcoTec3 V8 (L84), Duramax 3.0L I-6 (LM2)	●	●
RST	2.7L Turbo (L3B)	5.3L EcoTec3 V8 (L84), 6.2L EcoTec3 V8 (L87), Duramax 3.0L I-6 (LM2)	–	●

CREW CAB – SHORT BED



TRIM	STANDARD ENGINE	AVAILABLE ENGINES	2WD	4x4
WT	4.3L EcoTec3 V6 (LV3)	2.7L Turbo (L3B), 5.3L EcoTec3 V8 (L82)	●	●
Custom	4.3L EcoTec3 V6 (LV3) ¹	2.7L Turbo (L3B), 5.3L EcoTec3 V8 (L82) ¹	●	●
Custom Trail Boss	4.3L EcoTec3 V6 (LV3)	5.3L EcoTec3 V8 (L82), 6.2L EcoTec3 V8 (L87)	–	●
LT	2.7L Turbo (L3B)	5.3L EcoTec3 V8 (L84), Duramax 3.0L I-6 (LM2)	●	●
RST	2.7L Turbo (L3B)	5.3L EcoTec3 V8 (L84), 6.2L EcoTec3 V8 (L87) ² , Duramax 3.0L I-6 (LM2)	●	●
LT Trail Boss	5.3L EcoTec3 V8 (L84)	6.2L EcoTec3 V8 (L87)	–	●
Ltz	5.3L EcoTec3 V8 (L84)	6.2L EcoTec3 V8 (L87) ² , Duramax 3.0L I-6 (LM2)	●	●
High Country	5.3L EcoTec3 V8 (L84)	6.2L EcoTec3 V8 (L87) ² , Duramax 3.0L I-6 (LM2)	●	●

CREW CAB – STANDARD BED



TRIM	STANDARD ENGINE	AVAILABLE ENGINES	2WD	4x4
WT	4.3L EcoTec3 V6 (LV3)	2.7L Turbo (L3B), 5.3L EcoTec3 V8 (L82)	●	●
Custom	4.3L EcoTec3 V6 (LV3) ¹	2.7L Turbo (L3B), 5.3L EcoTec3 V8 (L82) ¹	–	●
Custom Trail Boss	4.3L EcoTec3 V6 (LV3)	5.3L EcoTec3 V8 (L82), 6.2L EcoTec3 V8 (L87)	–	●
LT	2.7L Turbo (L3B)	5.3L EcoTec3 V8 (L84), Duramax 3.0L I-6 (LM2) ²	●	●
RST	2.7L Turbo (L3B)	5.3L EcoTec3 V8 (L84), 6.2L EcoTec3 V8 (L87), Duramax 3.0L I-6 (LM2)	–	●
LT Trail Boss	5.3L EcoTec3 V8 (L84)	6.2L EcoTec3 V8 (L87)	–	●
Ltz	5.3L EcoTec3 V8 (L84)	6.2L EcoTec3 V8 (L87), Duramax 3.0L I-6 (LM2)	–	●
High Country	5.3L EcoTec3 V8 (L84)	6.2L EcoTec3 V8 (L87), Duramax 3.0L I-6 (LM2)	–	●

¹ Limited availability. ² Requires available 4x4.

PAYLOAD AND TRAILER WEIGHT RATINGS

MODEL	ENGINE	MAX PAYLOAD (LBS.) ¹	MAX CONVENTIONAL TRAILER WEIGHT (LBS.) ²
REGULAR CAB			
Long Bed 2WD	2.7L Turbo	2,280	9,600
	4.3L V6	2,250	7,900
	5.3L V8 (L82) with 6-speed	2,180	10,000
Long Bed 4x4	2.7L Turbo	2,160	9,400
	4.3L V6	2,130	7,600
	5.3L V8 (L82) with 6-speed	2,070	9,700
DOUBLE CAB			
Standard Bed 2WD	2.7L Turbo	2,060	9,300
	4.3L V6	2,040	7,600
	5.3L V8 (L82) with 6-speed	1,970	9,700
	5.3L V8 (L84) with 8-speed	1,970	9,800
	Duramax 3.0L I-6	1,780	9,500
Standard Bed 2WD with Max Trailering Package	5.3L V8 (L84) with 8-speed	2,190	11,500
Standard Bed 4x4	2.7L Turbo	2,050	9,100
	4.3L V6	2,020	7,400
	5.3L V8 (L82) with 6-speed	1,950	9,500
	5.3L V8 (L84) with 8-speed	1,960	9,500
	6.2L V8	1,690	9,300
	Duramax 3.0L I-6	1,770	9,100
Standard Bed 4x4 with Max Trailering Package	5.3L V8 (L84) with 8-speed	2,180	11,100
	6.2L V8	2,090	12,100
Standard Bed RST 4x4 with Max Trailering Package and 20" Wheels	6.2L V8	1,990	13,300
Standard Bed Trail Boss 4x4	4.3L V6	1,770	7,300
	5.3L V8 (L82) with 6-speed	1,670	9,400
	6.2L V8	1,780	9,300
CREW CAB			
Short Bed 2WD	2.7L Turbo	2,060	9,300
	4.3L V6	2,040	7,600
	5.3L V8 (L82) with 6-speed	2,060	9,700
	5.3L V8 (L84) with 8-speed	2,060	9,700
	Duramax 3.0L I-6	1,870	9,500
Short Bed 2WD with Max Trailering Package	5.3L V8 (L84) with 8-speed	2,180	11,500

MODEL	ENGINE	MAX PAYLOAD (LBS.) ¹	MAX CONVENTIONAL TRAILER WEIGHT (LBS.) ²
CREW CAB (CONTINUED)			
Standard Bed 2WD	2.7L Turbo	1,990	9,200
	4.3L V6	1,960	7,600
	5.3L V8 (L82) with 6-speed	1,990	9,600
	5.3L V8 (L84) with 8-speed	1,990	9,700
Standard Bed 2WD with Max Trailering Package	5.3L V8 (L84) with 8-speed	2,110	11,400
Short Bed 4x4	2.7L Turbo	2,050	9,100
	4.3L V6	2,020	7,400
	5.3L V8 (L82) with 6-speed	2,050	9,500
	5.3L V8 (L84) with 8-speed	2,060	9,400
	5.3L V8 (L84) with 10-speed	2,060	9,200
	6.2L V8	1,670	9,200
	Duramax 3.0L I-6	1,870	9,000
Short Bed Custom 4x4 with Custom Max Trailering Package	5.3L V8 (L82) with 6-speed	2,050	10,900
Short Bed 4x4 with Max Trailering Package	5.3L V8 (L84) with 8-speed	2,170	11,100
	6.2L V8	2,060	11,900
Short Bed Trail Boss 4x4	4.3L V6	1,770	7,300
	5.3L V8 (L82) with 6-speed	1,990	9,400
	5.3L V8 (L84) with 10-speed	1,770	9,300
	6.2L V8	1,870	9,300
Standard Bed 4x4	2.7L Turbo	2,000	9,000
	4.3L V6	1,970	7,400
	5.3L V8 (L82) with 6-speed	2,000	9,400
	5.3L V8 (L84) with 8-speed	2,010	9,300
	5.3L V8 (L84) with 10-speed	2,010	9,100
	6.2L V8	1,590	9,100
	Duramax 3.0L I-6	1,820	9,000
Standard Bed 4x4 with Max Trailering Package	5.3L V8 (L84) with 8-speed	2,120	11,100
	6.2L V8	2,010	11,900
Standard Bed Trail Boss 4x4	4.3L V6	1,710	7,200
	5.3L V8 (L82) with 6-speed	1,710	9,300
	5.3L V8 (L84) with 10-speed	1,720	9,300
	6.2L V8	1,820	9,200

¹ These maximum payload ratings are intended for comparison purposes only. Before you buy a vehicle or use it to haul people or cargo, carefully review the Vehicle Loading section of the Owner's Manual and check the carrying capacity of your specific vehicle on the label on the inside of the driver door jamb. ² Before you buy a vehicle or use it for trailering, carefully review the Trailering section of the Owner's Manual. The weight of passengers, cargo and options or accessories may reduce the amount you can tow.

WT



WT Silverado WT includes these features:

MECHANICAL

Brakes – 4-wheel antilock disc with Duralife rotors and brake lining wear indicator

Engine – 4.3L EcoTec3 V6 (LV3)

Exhaust – single-outlet

Frame – fully boxed frame with hydroformed front section

Rear axle ratio – 3.42

StabiliTrak® – Electronic Stability Control System with Proactive Roll Avoidance and Traction Control; includes Electronic Trailer Sway Control and Hill Start Assist

Steering – rack-and-pinion with Electric Power Steering (EPS) assist

Transmission – 6-speed automatic

EXTERIOR

Bumper – rear CornerSteps

Bumpers – semigloss Black, front and rear

Cargo area lighting – integrated with center high-mounted stop lamp

Door handles – Black

Fuel filler – capless fueling

Glass – solar-absorbing tinted

Grille – Black bar and mesh inserts

Headlamps – halogen reflector headlamps and daytime running lamps, automatic on/off with automatic delay

Mirrors – manual-adjustable, Black

Pickup bed – Durabed

Recovery hooks¹ – Black (4x4 models)

Tailgate – manual lift

EXTERIOR (CONTINUED)

Tailgate and bed rail – protection cap

Taillamps – incandescent

Tie-downs – 12 fixed cargo tie-downs, rated at 500 lbs² per corner

Tire – carrier lock

Tire – full-size spare

Tires – P255/70R17 all-season

INTERIOR

Air conditioning – single-zone, includes rear-seat air vents on Double Cab and Crew Cab

Air filter monitor

Airbags³ – dual-stage frontal airbags for driver and front outboard passenger; seat-mounted side-impact airbags for driver and front outboard passenger; head-curtain airbags for front and rear outboard seating positions; includes front outboard Passenger Sensing System for frontal outboard passenger airbag

Assist handles – driver and front passenger, A-pillar; rear passenger, B-pillar

Audio – 2-speaker system (Regular Cab); 6-speaker system (Double Cab and Crew Cab)

Connectivity – Bluetooth® phone connectivity and wireless audio streaming⁴

Display – outside temperature, located in radio

Door locks – manual (Regular Cab); power programmable with lockout protection and manual rear door child security (Double Cab and Crew Cab)

Driver Information Center – 3.5-inch diagonal monochromatic display

Entertainment – Chevrolet Infotainment 3 system⁵ with 7-inch diagonal color touch-screen, AM/ FM stereo, Bluetooth® audio streaming⁴ for two active devices, voice command pass-through to compatible phone, and Apple CarPlay®⁶ and Android Auto™⁷ compatibility

Floor covering – rubberized vinyl

Instrument cluster – 6-gauge with speedometer, fuel level, engine temperature, tachometer, voltage and oil pressure

Media – two USB ports⁸ on instrument panel

Power outlet – 12-volt auxiliary, front

Rear Seat Reminder⁹

Rear Vision Camera¹⁰

Seat – front 40/20/40 split-bench with covered armrest storage and 4-way manual driver and front passenger seat adjusters

Seat – rear 60/40 split-folding bench (Double Cab and Crew Cab)

Steering column – manual tilt-wheel with theft-deterrent locking feature

Teen Driver technology

Tire Pressure Monitoring System – with Tire Fill Alert (does not apply to spare tire)

Windows – manual (Regular Cab); power with driver express-up/-down, all others express-down (Double Cab and Crew Cab)

¹ To avoid the risk of injury, never use recovery hooks to tow a vehicle. See the Owner's Manual for more information. ² These maximum payload ratings are intended for comparison purposes only. Before you buy a vehicle or use it to haul people or cargo, carefully review the Vehicle Loading section of the Owner's Manual and check the carrying capacity of your specific vehicle on the label on the inside of the driver door jamb. ³ A NOTE ON CHILD SAFETY: Always use seat belts and the correct child restraint for your child's age and size, even with airbags. Even in vehicles equipped with the Passenger Sensing System, children are safer when properly secured in a rear seat in the appropriate infant, child or booster seat. Never place a rear-facing infant restraint in the front seat of any vehicle equipped with an active frontal airbag. See your vehicle Owner's Manual and the child safety seat instructions for more safety information. ⁴ Go to my.chevrolet.com/learnAbout/bluetooth to find out which phones are compatible with the vehicle. Full Bluetooth feature functionality varies by device, model and software version. ⁵ Chevrolet Infotainment System functionality varies by model. Full functionality requires compatible Bluetooth and smartphone, and USB connectivity for some devices. ⁶ Vehicle user interface is a product of Apple and its terms and privacy statements apply. Requires compatible iPhone and data plan rates apply. ⁷ Vehicle user interface is a product of Google and its terms and privacy statements apply. Requires the Android Auto app on Google Play and an Android compatible smartphone running Android 5.0 or higher. Data plan rates apply. ⁸ Not compatible with all devices. ⁹ Does not detect people or items. Always check rear seat before exiting. ¹⁰ Read the vehicle Owner's Manual for important feature limitations and information.

WT (CONTINUED)

Summit White (GAZ)

Silver Ice Metallic (GAN)

Satin Steel Metallic (G9K)

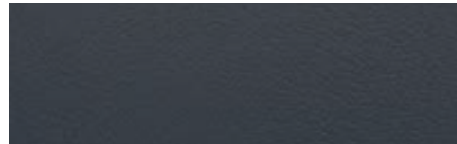
Shadow Gray Metallic (GJI)

Oxford Brown Metallic (GNK)

Red Hot (G7C)

Northsky Blue Metallic (GA0)

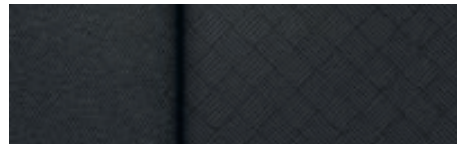
Black (GBA)



Jet Black Vinyl (shown)



Jet Black Cloth



Jet Black Cloth¹



17" Ultra Silver-Painted Steel Wheels (RD6)
Standard on WT



17" Bright Silver-Painted Aluminum Wheels (Q5U)
Available on WT



Short Bed Side-Mounted Bed Storage Box in Black with Codeable Key from Chevrolet Accessories²



Utility Rack System
from Chevrolet Accessories²



Work Step Assist Steps in Black
from Chevrolet Accessories²

¹ Requires available 2.7L Turbo engine and 10-way power driver seat adjuster with power lumbar control. ² Chevrolet Accessories are dealer-installed and covered by the GM 3-year/36,000-mile (whichever comes first) New Vehicle Limited Warranty when ordered with your new Silverado. See your dealer for details.

CUSTOM & POPULAR EQUIPPED MODEL



Jet Black Cloth



20" Bright Silver-Painted Aluminum Wheels (NZE)
Standard on Custom



20" High-Gloss Black-Painted Aluminum Wheels (RD5)
Available on Custom with Rally Edition

CUSTOM In addition to or replacing WT features, Custom includes:

MECHANICAL

Trailer Package – trailer hitch, 7-pin and 4-pin connectors, and Hitch Guidance¹

EXTERIOR

Bumpers – body-color, front and rear

Glass – deep-tinted behind front doors

Grille – body-color bar with Black mesh inserts

Mirrors – heated, power-adjustable

Recovery hooks² – Black

Taillamps – LED

Tires – P275/60R20 all-season

INTERIOR

Custom Convenience Package – remote vehicle starter system, unauthorized entry theft-deterrent system, rear-window defogger, EZ Lift power lock and release tailgate, and key fob-activated LED cargo area lighting

Infotainment Package – SiriusXM^{®3} All Access Package with 3-month trial subscription; up to 3 months of OnStar[®] Safety & Security and Chevrolet Connected Services coverage;⁴ 1 month or 3 GB (whichever comes first) of available 4G LTE Wi-Fi^{®5} Hotspot; up to 10 years of Chevrolet Connected Access⁶

Cruise control – electronic with Set and Resume Speed, steering wheel-mounted controls

Floor covering – color-keyed carpeting

Floor mats – vinyl, front and rear

Remote Keyless Entry

¹ Read the vehicle Owner's Manual for important feature limitations and information. ² To avoid the risk of injury, never use recovery hooks to tow a vehicle. See the Owner's Manual for more information. ³ If you decide to continue service after your trial, the subscription plan you choose will automatically renew thereafter and you will be charged according to your chosen payment method at then-current rates. Fees and taxes apply. See the SiriusXM Customer Agreement at siriusxm.com for complete terms and how to cancel. All fees, content, features and availability are subject to change. ⁴ When you select a monthly plan within 30 days of activating your 1-month trial, you'll receive the next 2 months of the plan you select at no additional charge when you associate an approved payment method on file to your account and authorize recurring payments for your service plan. The amount and frequency of each recurring payment is based upon the service(s) and payment interval(s) you select from the options provided. After the trial expires, OnStar will automatically bill your payment method monthly at then-current standard monthly rates. Plans containing 4G LTE data will be billed every 30 days by AT&T. You may cancel at any time by pushing your blue OnStar button or calling 1-888-466-7827. May not be combined with other offers or retroactively applied. Offer subject to change. ⁵ Service varies with conditions and location. Requires active service and paid AT&T data plan. Visit onstar.com for details and limitations. Availability subject to change. ⁶ Standard connectivity available only to original purchaser for up to 10 years. Connected Access services are subject to change. Does not include emergency or security services. Diagnostic capabilities vary by model and service plan. Message and data rates may apply. Requires contact method on file and enrollment to receive alerts. Not all issues will deliver alerts. Visit onstar.com for details and limitations.

CUSTOM & POPULAR EQUIPPED MODEL (CONTINUED)

Summit White (GAZ)

Silver Ice Metallic (GAN)

Satin Steel Metallic (G9K)

Shadow Gray Metallic (GJI)

Oxford Brown Metallic (GNK)

Red Hot (G7C)

Cherry Red Tintcoat¹ (GSK)

Northsky Blue Metallic (GA0)

Black (GBA)



CUSTOM CREW CAB SHORT BED 4x4 Popular Equipped Model includes:

Available Engine – 2.7L Turbo (L3B) with auto stop/start

Custom Convenience Package

Infotainment Package

POPULAR OPTIONS FOR CONSIDERATION

Bedliner – Chevytec spray-on bedliner with logo

Differential – automatic locking rear

Tires – 275/60R20 all-terrain

Trailer brake controller – integrated



Black Chrome Exhaust Tip with Bowtie Logo from Chevrolet Accessories²



Premium All-Weather Floor Liners in Jet Black with Chevrolet Script from Chevrolet Accessories²



4-Inch Round Assist Steps in Black from Chevrolet Accessories²

¹ Extra-cost color. ² Chevrolet Accessories are dealer-installed and covered by the GM 3-year/36,000-mile (whichever comes first) New Vehicle Limited Warranty when ordered with your new Silverado. See your dealer for details.

CUSTOM TRAIL BOSS & POPULAR EQUIPPED MODEL



Jet Black Cloth



18" High-Gloss Black-Painted Aluminum Wheels (RD1)
Standard on Custom Trail Boss



20" High-Gloss Black-Painted Aluminum Wheels (RD5)
Available on Custom Trail Boss

CUSTOM TRAIL BOSS In addition to or replacing Custom features, Custom Trail Boss includes:

MECHANICAL

Suspension Package – Z71 Off-Road Package, Off-Road suspension with 2-inch factory lift and monotube shocks, Hill Descent Control, skid plates and Z71 badge

Air filter – heavy-duty

Differential – automatic locking rear

Transfer case – Autotrac 2-speed electronic

EXTERIOR

Custom Convenience Package – remote vehicle starter system, unauthorized entry theft-deterrent system, rear-window defogger, EZ Lift power lock and release tailgate, and key fob-activated LED cargo area lighting

Infotainment Package – SiriusXM^{®1} All Access Package with 3-month trial subscription; up to 3 months of OnStar Safety & Security and Chevrolet Connected Services coverage;² 1 month or 3 GB (whichever comes first) of available 4G LTE Wi-Fi^{®3} Hotspot; up to 10 years of Chevrolet Connected Access;⁴ compass located in instrument cluster

Bumpers – high-gloss Black, front and rear

Grille – high-gloss Black bar with mesh inserts and Z71 badge

Recovery hooks⁵ – Performance Red

Tires – LT275/65R18C Goodyear Wrangler DuraTrac[®] MT

¹ If you decide to continue service after your trial, the subscription plan you choose will automatically renew thereafter and you will be charged according to your chosen payment method at then-current rates. Fees and taxes apply. See the SiriusXM Customer Agreement at siriusxm.com for complete terms and how to cancel. All fees, content, features and availability are subject to change. ² When you select a monthly plan within 30 days of activating your 1-month trial, you'll receive the next 2 months of the plan you select at no additional charge when you associate an approved payment method on file to your account and authorize recurring payments for your service plan. The amount and frequency of each recurring payment is based upon the service(s) and payment interval(s) you select from the options provided. After the trial expires, OnStar will automatically bill your payment method monthly at then-current standard monthly rates. Plans containing 4G LTE data will be billed every 30 days by AT&T. You may cancel at any time by pushing your blue OnStar button or calling 1-888-466-7827. May not be combined with other offers or retroactively applied. Offer subject to change. ³ Service varies with conditions and location. Requires active service and paid AT&T data plan. Visit onstar.com for details and limitations. Availability subject to change. ⁴ Standard connectivity available only to original purchaser for up to 10 years. Connected Access services are subject to change. Does not include emergency or security services. Diagnostic capabilities vary by model and service plan. Message and data rates may apply. Requires contact method on file and enrollment to receive alerts. Not all issues will deliver alerts. Visit onstar.com for details and limitations. ⁵ To avoid the risk of injury, never use recovery hooks to tow a vehicle. See the Owner's Manual for more information.

CUSTOM TRAIL BOSS & POPULAR EQUIPPED MODEL (CONTINUED)

Summit White (GAZ)

Silver Ice Metallic (GAN)

Satin Steel Metallic (G9K)

Shadow Gray Metallic (GJI)

Oxford Brown Metallic (GNK)

Red Hot (G7C)

Cherry Red Tintcoat¹ (GSK)

Northsky Blue Metallic (GA0)

Black (GBA)



CUSTOM TRAIL BOSS CREW CAB SHORT BED 4x4 Popular Equipped Model includes:

Available Engine – 5.3L EcoTec3 V8 (L82)

Custom Convenience Package

Infotainment Package

POPULAR OPTIONS FOR CONSIDERATION

Bedliner – Chevytec spray-on bedliner with logo

Trailer brake controller – integrated



Premium All-Weather Floor Liners in Jet Black with Chrome Z71 Logo from Chevrolet Accessories²



Soft Roll-Up Tonneau Cover from Chevrolet Accessories²



4-Inch Round Assist Steps in Black from Chevrolet Accessories²

¹ Extra-cost color. ² Chevrolet Accessories are dealer-installed and covered by the GM 3-year/36,000-mile (whichever comes first) New Vehicle Limited Warranty when ordered with your new Silverado. See your dealer for details.

LT & POPULAR EQUIPPED MODELS



LT In addition to or replacing Custom features, LT includes:

MECHANICAL

Trailer Package – trailer hitch, 7-pin and 4-pin connectors, and Hitch Guidance¹

Differential – automatic locking rear

Engine – 2.7L Turbo (L3B) with auto stop/start

Transmission – 8-speed automatic

EXTERIOR

Bumpers – chrome, front and rear

Door handles – body-color

Grille – chrome bars with high-gloss Black mesh inserts

Headlamps – LED reflector headlamps and LED signature daytime running lamps

Mirror caps – chrome

Taillamps – incandescent

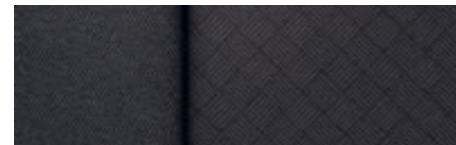
Tires – P255/70R17 all-season

INTERIOR

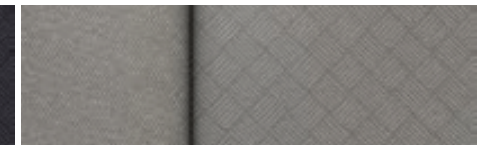
Convenience Package – dual-zone automatic climate control, 10-way power driver seat adjuster with power lumbar control, heated driver and front outboard passenger seats, lockable front center underseat storage, heated leather-wrapped steering wheel, manual tilt/telescoping steering column with electric theft-deterrent locking feature, two charge-only USB ports² in second row, rear-seat 12-volt auxiliary outlet, Keyless Open and Start, remote vehicle starter system, unauthorized entry theft-deterrent system, rear-window defogger, EZ Lift power lock and release tailgate, and key fob-activated LED cargo area lighting

Driver Information Center – 4.2-inch diagonal color display and driver personalization

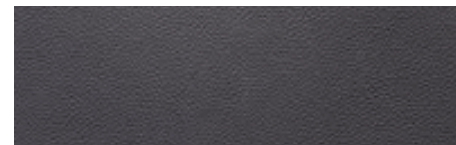
Entertainment – Chevrolet Infotainment 3 system³ with 8-inch diagonal color touch-screen, AM/FM stereo, Bluetooth[®] audio streaming⁴ for two active devices, voice command pass-through to compatible phone, and Apple CarPlay^{®5} and Android Auto^{™6} compatibility



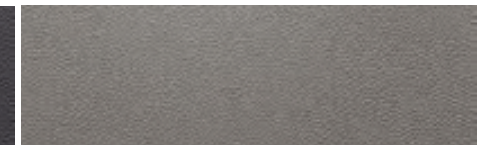
Jet Black Cloth (shown)



Gideon Cloth



Jet Black Leather-Appointed Seating⁷



Gideon Leather-Appointed Front Seating



17" Bright Silver-Painted Aluminum Wheels (Q5U)
Standard on LT



18" Bright Silver-Painted Aluminum Wheels (PZX)
Available on LT



20" Painted-Aluminum Wheels with Machined Face
and Argent Metallic Pockets (RD4) Available on LT

¹ Read the vehicle Owner's Manual for important feature limitations and information. ² Not compatible with all devices. ³ Chevrolet Infotainment System functionality varies by model. Full functionality requires compatible Bluetooth and smartphone, and USB connectivity for some devices. ⁴ Go to my.chevrolet.com/learnAbout/bluetooth to find out which phones are compatible with the vehicle. Full Bluetooth feature functionality varies by device, model and software version. ⁵ Vehicle user interface is a product of Apple and its terms and privacy statements apply. Requires compatible iPhone and data plan rates apply. ⁶ Vehicle user interface is a product of Google and its terms and privacy statements apply. Requires the Android Auto app on Google Play and an Android compatible smartphone running Android 5.0 or higher. Data plan rates apply. ⁷ Leather-appointed seating surfaces in front row; second row is vinyl-covered.

LT & POPULAR EQUIPPED MODELS (CONTINUED)

Summit White (GAZ)

Iridescent Pearl Tricoat¹ (G1W)

Silver Ice Metallic (GAN)

Satin Steel Metallic (G9K)

Shadow Gray Metallic (GJI)

Oxford Brown Metallic (GNK)

Red Hot (G7C)

Cherry Red Tintcoat¹ (GSK)

Northsky Blue Metallic (GA0)

Mosaic Black Metallic² (GB8)

Black (GBA)



LT ALL STAR CREW CAB SHORT BED 4x4 Popular Equipped Model includes:

Available Engines – 5.3L EcoTec3 V8 (L84), Duramax 3.0L Turbo-Diesel I-6 (LM2) or 2.7L Turbo (L3B) with auto stop/start Convenience Package, Trailing Package and automatic locking rear differential

POPULAR OPTIONS FOR CONSIDERATION

Bed Protection Package – rear wheelhouse liners and Chevytec spray-on bedliner with logo

Tires – 265/70R17 all-terrain

Tires – 265/65R18 all-terrain (requires available 18" Bright Silver-painted aluminum wheels [PZX])

Trailer brake controller – integrated

Wheels – 18" Bright Silver-painted aluminum (PZX)

LT ALL STAR Z71 PLUS CREW CAB SHORT BED 4x4 Popular Equipped Model includes:

Available Engines – 5.3L EcoTec3 V8 (L84) or Duramax 3.0L Turbo-Diesel I-6 (LM2)

Convenience Package, Trailing Package and automatic locking rear differential

All Star Edition Plus – 20" painted-aluminum wheels with machined face and Argent Metallic pockets (RD4) and Convenience Package II (Universal Home Remote, power-sliding rear window, 120-volt bed- and instrument panel-mounted power outlets [400 watts shared], Chevrolet Infotainment 3 Plus system³ with 8-inch diagonal color touch-screen, SD card reader, SiriusXM⁴ with 360L⁴ All Access Package with 3-month trial subscription, HD Radio⁵ and HD Rear Vision Camera⁵)

Z71 Off-Road and Protection Package – Z71 Off-Road suspension, Hill Descent Control, skid plates, heavy-duty air filter, Z71 badge and Bed Protection Package (rear wheelhouse liners, Chevytec spray-on bedliner with logo and all-weather floor liners with Z71 logo)

Tires – 275/60R20 all-terrain

POPULAR OPTIONS FOR CONSIDERATION

Advanced Trailing Package – Hitch Guidance with Hitch View⁶, integrated trailer brake controller and Advanced Trailing System

Leather Package – Jet Black or Gideon leather-appointed seating surfaces⁷ and Uplevel Rear Seat with Storage Package



Chrome Package includes Polished Exhaust Tip and Chrome Recovery Hooks⁷ from Chevrolet Accessories⁸



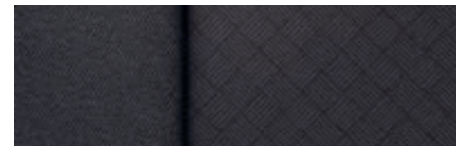
Front Splash Guards in Black from Chevrolet Accessories⁸



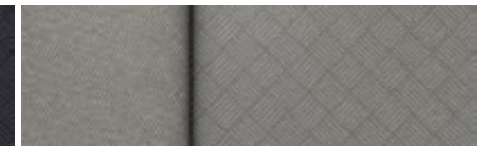
4-Inch Round Assist Steps in Chrome from Chevrolet Accessories⁸

¹ Extra-cost color. ² Late availability. ³ Chevrolet Infotainment System functionality varies by model. Full functionality requires compatible Bluetooth and smartphone, and USB connectivity for some devices. ⁴ If you decide to continue service after your trial, the subscription plan you choose will automatically renew thereafter and you will be charged according to your chosen payment method at then-current rates. Fees and taxes apply. See the SiriusXM Customer Agreement at siriusxm.com for complete terms and how to cancel. All fees, content, features and availability are subject to change. Certain features require a SiriusXM subscription and the Chevrolet Connected Access plan. See siriusxm.com and onstar.com for details and limitations. ⁵ Read the vehicle Owner's Manual for important feature limitations and information. ⁶ Leather-appointed seating surfaces in front row; second row is vinyl-covered. ⁷ To avoid the risk of injury, never use recovery hooks to tow a vehicle. See the Owner's Manual for more information. ⁸ Chevrolet Accessories are dealer-installed and covered by the GM 3-year/36,000-mile (whichever comes first) New Vehicle Limited Warranty when ordered with your new Silverado. See your dealer for details.

RST & POPULAR EQUIPPED MODELS



Jet Black Cloth



Gideon Cloth



Jet Black Leather-Appointed Seating⁴



Gideon Leather-Appointed Seating (shown)⁴

RST In addition to or replacing LT features, RST includes:

MECHANICAL

Trailering Package – trailer hitch, 7-pin and 4-pin connectors, and Hitch Guidance¹

Differential – automatic locking rear

EXTERIOR

Bumpers – body-color, front and rear

Chevrolet bowtie emblems – Black

Fog lamps – LED

Grille – body-color bars with high-gloss Black mesh inserts

Mirror caps – high-gloss Black

Recovery hooks² – Black

Taillamps – LED

Tires – P265/65R18 all-season

INTERIOR

Convenience Package – dual-zone automatic climate control, 10-way power driver seat adjuster with power lumbar control, heated driver and front outboard passenger seats, lockable front center underseat storage, heated leather-wrapped steering wheel, manual tilt/telescoping steering column with electric theft-deterrent locking feature, two charge-only USB ports³ in second row, rear-seat 12-volt auxiliary outlet, Keyless Open and Start, remote vehicle starter system, unauthorized entry theft-deterrent system, rear-window defogger, EZ Lift power lock and release tailgate, and key fob-activated LED cargo area lighting

Cloth Rear Seat with Storage Package – rear 60/40 full-length folding bench seat; Crew Cab includes seatback storage on left and right side, center foldout armrest with two cup holders and underseat storage



18" Bright Silver-Painted Aluminum Wheels (PZX)
Standard on RST



20" Painted-Aluminum Wheels with Machined Face
and Argent Metallic Pockets (RD4) Available on RST



20" High-Gloss Black-Painted Aluminum Wheels with
Red Accents (RPS) Available on RST with Redline Edition



22" High-Gloss Black-Painted Aluminum Wheels (SGM)
Available on RST with Rally Edition

¹ Read the vehicle Owner's Manual for important feature limitations and information. ² To avoid the risk of injury, never use recovery hooks to tow a vehicle. See the Owner's Manual for more information. ³ Not compatible with all devices. ⁴ Leather-appointed seating surfaces in front row; second row is vinyl-covered.

RST & POPULAR EQUIPPED MODELS (CONTINUED)

Summit White (GAZ)

Iridescent Pearl Tricoat¹ (G1W)

Silver Ice Metallic (GAN)

Satin Steel Metallic (G9K)

Shadow Gray Metallic (GJI)

Oxford Brown Metallic (GNK)

Red Hot (G7C)

Cherry Red Tintcoat¹ (GSK)

Northsky Blue Metallic (GA0)

Mosaic Black Metallic² (GB8)

Black (GBA)



RST ALL STAR Z71 CREW CAB SHORT BED 4x4 Popular Equipped Model includes:

Available Engines – 5.3L EcoTec3 V8 (L84) or Duramax 3.0L Turbo-Diesel I-6 (LM2)

Convenience Package, Trailing Package and automatic locking rear differential

Z71 Off-Road and Protection Package – Z71 Off-Road suspension, Hill Descent Control, skid plates, heavy-duty air filter, Z71 badge and Bed Protection Package (rear wheelhouse liners, Chevytec spray-on bedliner with logo and all-weather floor liners with Z71 logo) (requires all-terrain tires)

POPULAR OPTIONS FOR CONSIDERATION

Convenience Package with Bucket Seats – front bucket seats and center floor console

Wheels – 20" painted-aluminum with machined face and Argent Metallic pockets (RD4); includes 275/70R20 all-terrain tires

RST ALL STAR Z71 PLUS CREW CAB SHORT BED 4x4 Popular Equipped Model includes:

Available Engines – 5.3L EcoTec3 V8 (L84), 6.2L EcoTec3 V8 (L87) or Duramax 3.0L Turbo-Diesel I-6 (LM2)

Convenience Package, Trailing Package and automatic locking rear differential

All Star Edition Plus – 20" painted-aluminum wheels with machined face and Argent Metallic pockets (RD4), 275/70R20 all-terrain tires and Convenience Package II (Universal Home Remote, power-sliding rear window, 120-volt bed- and instrument panel-mounted power outlets [400 watts shared], Chevrolet Infotainment 3 Plus system³ with 8-inch diagonal color touch-screen, SD card reader, SiriusXM[®] with 360L⁴ All Access Package with 3-month trial subscription, HD Radio[®] and HD Rear Vision Camera⁵)

Z71 Off-Road and Protection Package – Z71 Off-Road suspension, Hill Descent Control, skid plates, heavy-duty air filter, Z71 badge and Bed Protection Package (rear wheelhouse liners, Chevytec spray-on bedliner with logo and all-weather floor liners with Z71 logo)

Convenience Package with Bucket Seats – front bucket seats and center floor console

Leather Package – Jet Black or Gideon leather-appointed seating surfaces⁶ and Uplevel Rear Seat with Storage Package

POPULAR OPTIONS FOR CONSIDERATION

Advanced Trailing Package – Hitch Guidance with Hitch View⁵; integrated trailer brake controller and Advanced Trailing System

Safety Package – Front and Rear Park Assist⁵; Lane Change Alert with Side Blind Zone Alert⁵; Rear Cross Traffic Alert⁵ and perimeter lighting

Sunroof – power



Underseat Storage from Chevrolet Accessories⁷



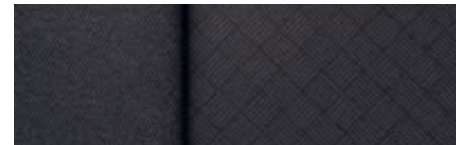
Dark Essentials Package includes Silverado Badge in Black and Chevrolet Tailgate Lettering in Black from Chevrolet Accessories⁷



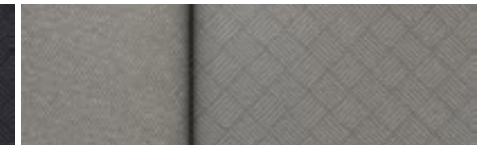
6-Inch Rectangular Assist Steps in Black from Chevrolet Accessories⁷

¹ Extra-cost color. ² Late availability. ³ Chevrolet Infotainment System functionality varies by model. Full functionality requires compatible Bluetooth and smartphone, and USB connectivity for some devices. ⁴ If you decide to continue service after your trial, the subscription plan you choose will automatically renew thereafter and you will be charged according to your chosen payment method at then-current rates. Fees and taxes apply. See the SiriusXM Customer Agreement at siriusxm.com for complete terms and how to cancel. All fees, content, features and availability are subject to change. Certain features require a SiriusXM subscription and the Chevrolet Connected Access plan. See siriusxm.com and onstar.com for details and limitations. ⁵ Read the vehicle Owner's Manual for important feature limitations and information. ⁶ Leather-appointed seating surfaces in front row; second row is vinyl-covered. ⁷ Chevrolet Accessories are dealer-installed and covered by the GM 3-year/36,000-mile (whichever comes first) New Vehicle Limited Warranty when ordered with your new Silverado. See your dealer for details.

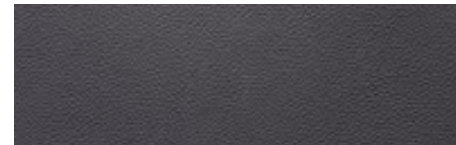
LT TRAIL BOSS & POPULAR EQUIPPED MODEL



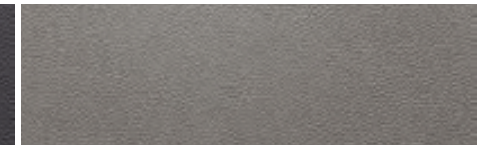
Jet Black Cloth



Gideon Cloth



Jet Black Leather-Appointed Seating (shown)²



Gideon Leather-Appointed Seating²



18" High-Gloss Black-Painted Aluminum Wheels (RD1)
Standard on LT Trail Boss



20" High-Gloss Black-Painted Aluminum Wheels (RD5)
Available on LT Trail Boss

LT TRAIL BOSS In addition to or replacing RST features, LT Trail Boss includes:

MECHANICAL

Suspension Package – Z71 Off-Road Package, Off-Road suspension with 2-inch factory lift, monotube shocks, Hill Descent Control, skid plates and Z71 badge

Air filter – heavy-duty

Engine – 5.3L EcoTec3 V8 (L84) with Dynamic Fuel Management

Exhaust – dual-outlet with polished rectangular tips

Rear axle ratio – 3.23

Transfer case – Autotrac 2-speed electronic

Transmission – 10-speed automatic

EXTERIOR

Bumpers – high-gloss Black, front and rear

Door handles – high-gloss Black

Grille – high-gloss Black bars with mesh inserts and Z71 badge

Recovery hooks¹ – Performance Red

Tires – LT275/65R18C Goodyear Wrangler DuraTrac[®] MT

INTERIOR

Floor liners – all-weather, front and rear with Z71 logo

Seats – front bucket seats with center floor console

¹ To avoid the risk of injury, never use recovery hooks to tow a vehicle. See the Owner's Manual for more information. ² Leather-appointed seating surfaces in front row; second row is vinyl-covered.

LT TRAIL BOSS & POPULAR EQUIPPED MODEL (CONTINUED)

Summit White (GAZ)

Iridescent Pearl Tricoat¹ (G1W)

Silver Ice Metallic (GAN)

Satin Steel Metallic (G9K)

Shadow Gray Metallic (GJI)

Oxford Brown Metallic (GNK)

Red Hot (G7C)

Cherry Red Tintcoat¹ (GSK)

Northsky Blue Metallic (GA0)

Black (GBA)



LT TRAIL BOSS CREW CAB SHORT BED 4x4 Popular Equipped Model includes:

Available Engines – 5.3L EcoTec3 V8 (L84) or 6.2L EcoTec3 V8 (L87)

Convenience Package II – Universal Home Remote, power-sliding rear window, 120-volt bed- and instrument panel-mounted power outlets (400 watts shared), Chevrolet Infotainment 3 Plus system² with 8-inch diagonal color touch-screen, SD card reader, SiriusXM³ with 360L³ All Access Package with 3-month trial subscription, HD Radio,⁴ Bose premium 7-speaker sound system with Richbass woofer and HD Rear Vision Camera⁴

Safety Package – Front and Rear Park Assist⁴; Lane Change Alert with Side Blind Zone Alert⁴; Rear Cross Traffic Alert⁴ and perimeter lighting

Leather Package – Jet Black or Gideon leather-appointed seating surfaces⁵ and Uplevel Rear Seat with Storage Package

Bed Protection Package – rear wheelhouse liners and Chevytec spray-on bedliner with logo

Advanced Trailering Package – Hitch Guidance with Hitch View⁴; integrated trailer brake controller and Advanced Trailering System

POPULAR OPTIONS FOR CONSIDERATION

Wheels/Tires – 20" high-gloss Black-painted aluminum wheels (RD5) and LT265/60R20 Goodyear Wrangler[®] Territory MT tires

Bed View Camera⁴ – shows view of cargo bed, includes two trailer view camera provisions

Sunroof – power

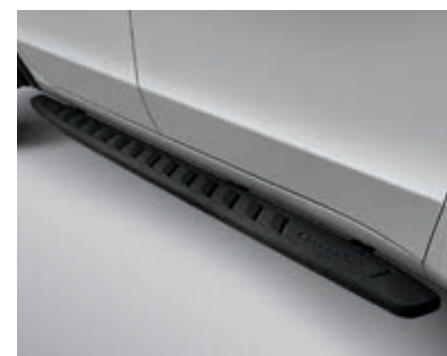
Trailer Tire Pressure Monitor Sensors – set of four (separate installation required)

SILVERADO

Dark Essentials Package includes Silverado and LT Badges in Black and Chevrolet Tailgate Lettering in Black from Chevrolet Accessories⁶



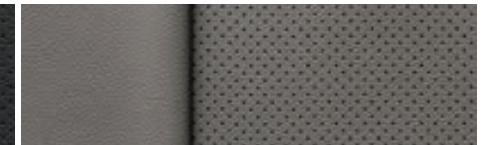
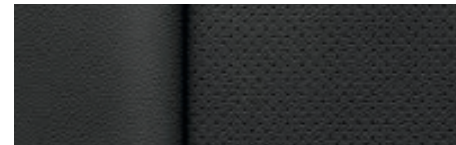
Soft Tri-Fold Tonneau Cover from Chevrolet Accessories⁷



Off-Road Assist Steps in Black from Chevrolet Accessories⁶

¹ Extra-cost color. ² Chevrolet Infotainment System functionality varies by model. Full functionality requires compatible Bluetooth and smartphone, and USB connectivity for some devices. ³ If you decide to continue service after your trial, the subscription plan you choose will automatically renew thereafter and you will be charged according to your chosen payment method at then-current rates. Fees and taxes apply. See the SiriusXM Customer Agreement at siriusxm.com for complete terms and how to cancel. All fees, content, features and availability are subject to change. Certain features require a SiriusXM subscription and the Chevrolet Connected Access plan. See siriusxm.com and onstar.com for details and limitations. ⁴ Read the vehicle Owner's Manual for important feature limitations and information. ⁵ Leather-appointed seating surfaces in front row; second row is vinyl-covered. ⁶ Chevrolet Accessories are dealer-installed and covered by the GM 3-year/36,000-mile (whichever comes first) New Vehicle Limited Warranty when ordered with your new Silverado. See your dealer for details. ⁷ Non-GM warranty. Limited warranty by Advantage, 5 years. For more information, contact your dealer.

LTZ & POPULAR EQUIPPED MODELS



Jet Black Perforated Leather-Appointed Seating (shown)¹⁰

Gideon Perforated Leather-Appointed Seating¹⁰



20" Polished-Finish Aluminum Wheels (RD2)
Standard on LTZ

LTZ In addition to or replacing RST features, LTZ includes:

MECHANICAL

Trailer Package – trailer hitch, 7-pin and 4-pin connectors, Hitch Guidance with Hitch View¹, Trailer Tire Pressure Monitoring System module, Advanced Trailer System and integrated trailer brake controller

Engine – 5.3L EcoTec3 V8 (L84) with Dynamic Fuel Management

Rear axle ratio – 3.23

EXTERIOR

Bumpers – chrome, front and rear

Chevrolet bowtie emblems – Gold

Door handles – chrome

Grille – chrome bars with high-gloss Black mesh and chrome inserts

Mirror caps – chrome

Mirrors – heated, power-adjustable, power-folding with memory and driver-side auto-dimming features, puddle lamps, and perimeter lighting

Power outlet – 120-volt (up to 400 watts, shared with instrument panel 120-volt outlet), bed-mounted

Tailgate – power-up/-down tailgate with power lock and release

Tires – 275/60R20 all-season

Wheelhouse liners – rear

INTERIOR

Center console – floor-mounted with cup holders, cell phone storage, power cord management and hanging file folder capability

Entertainment – Chevrolet Infotainment 3 Plus system² with 8-inch diagonal HD color touch-screen, AM/FM stereo, HD Radio,³ Bluetooth[®] audio streaming³ for two active devices, wireless Apple CarPlay^{®4} and wireless Android Auto^{™5} compatibility, available Alexa Built-In⁶ voice recognition and available In-Vehicle Apps⁷

Front and Rear Park Assist¹

HD Rear Vision Camera¹

Lane Change Alert with Side Blind Zone Alert¹

INTERIOR (CONTINUED)

Media – two additional USB ports⁹ (six total), SD card reader and auxiliary input jack inside center floor console

Memory – driver seat and exterior mirror settings

Mirror – rearview, auto-dimming

Power outlet – 120-volt (up to 400 watts, shared with cargo bed 120-volt outlet), on instrument panel

Rear Cross Traffic Alert¹

Seats – front bucket seats with center floor console, ventilated driver and front passenger seats, 10-way power front passenger seat and heated rear outboard seating positions

Seat – rear 60/40 full-length folding bench; Crew Cab includes seatback storage on left and right side, center foldout armrest with two cup holders and underseat storage

SiriusXM[®] with 360L[®] – All Access Package with 3-month trial subscription

Window – power-sliding rear window with defogger

Windows – power with driver and front passenger express-up/-down, rear express-down

¹ Read the vehicle Owner's Manual for important feature limitations and information. ² Chevrolet Infotainment System functionality varies by model. Full functionality requires compatible Bluetooth and smartphone, and USB connectivity for some devices. ³ Go to my.chevrolet.com/learnAbout/bluetooth to find out which phones are compatible with the vehicle. Full Bluetooth feature functionality varies by device, model and software version. ⁴ Vehicle user interface is a product of Apple and its terms and privacy statements apply. Requires compatible iPhone and data plan rates apply. ⁵ Vehicle user interface is a product of Google and its terms and privacy statements apply. Requires the Android Auto app on Google Play and a compatible Android smartphone. Data plan rates apply. You can check which smartphones are compatible at g.co/androidauto/requirements. ⁶ Functionality is subject to limitations and varies by vehicle, infotainment system and location. Select service plan required. Certain Alexa Skills require account linking to use. Amazon, Alexa and all related logos and motion marks are trademarks of Amazon.com, Inc. or its affiliates. Visit onstar.com for additional details. ⁷ Requires active service plan and paid AT&T vehicle data plan or compatible device with 3G/4G LTE tethering data plan. Visit onstar.com for details and limitations. ⁸ Not compatible with all devices. ⁹ If you decide to continue service after your trial, the subscription plan you choose will automatically renew thereafter and you will be charged according to your chosen payment method at then-current rates. Fees and taxes apply. See the SiriusXM Customer Agreement at siriusxm.com for complete terms and how to cancel. All fees, content, features and availability are subject to change. Certain features require a SiriusXM subscription and the Chevrolet Connected Access plan. See siriusxm.com and onstar.com for details and limitations. ¹⁰ Leather-appointed seating surfaces in front row; second row is vinyl-covered.

LTZ & POPULAR EQUIPPED MODELS (CONTINUED)

Summit White (GAZ)

Iridescent Pearl Tricoat¹ (G1W)

Silver Ice Metallic (GAN)

Satin Steel Metallic (G9K)

Shadow Gray Metallic (GJ1)

Oxford Brown Metallic (GNK)

Cherry Red Tintcoat¹ (GSK)

Northsky Blue Metallic (GA0)

Mosaic Black Metallic² (GB8)

Black (GBA)



LTZ Z71 PLUS CREW CAB SHORT BED 4x4 Popular Equipped Model includes:

Available Engines – 5.3L EcoTec3 V8 (L84), 6.2L EcoTec3 V8 (L87) or Duramax 3.0L Turbo-Diesel I-6 (LM2)

Z71 Off-Road and Protection Package – Z71 Off-Road suspension, Hill Descent Control, skid plates, heavy-duty air filter and Z71 badge; includes 275/60R20 all-terrain tires, Chevytec spray-on bedliner with logo and all-weather floor liners with Z71 logo

POPULAR OPTIONS FOR CONSIDERATION

LTZ Convenience Package II – Chevrolet Infotainment 3 Premium system³ with Navigation⁴ and available In-Vehicle Apps⁵; Bose premium 7-speaker sound system and wireless charging⁶

Sunroof – power

Trailer Tire Pressure Monitor Sensors – set of four (separate installation required)

LTZ PREMIUM Z71 CREW CAB SHORT BED 4x4 Popular Equipped Model includes:

Available Engines – 5.3L EcoTec3 V8 (L84), 6.2L EcoTec3 V8 (L87) or Duramax 3.0L Turbo-Diesel I-6 (LM2)

LTZ Premium Package – LTZ Convenience Package II features listed above, power sunroof and Safety Package II (Adaptive Cruise Control⁷; Automatic Emergency Braking⁷; Following Distance Indicator⁷; Forward Collision Alert⁷; Front Pedestrian Braking⁷; Lane Keep Assist with Lane Departure Warning⁷; Safety Alert Seat⁷ and IntelliBeam)

Technology Package – HD Surround Vision⁷ with two trailer view camera provisions, Rear Camera Mirror⁷; Bed View Camera⁷; Head-Up Display and enhanced Driver Information Center

Z71 Off-Road and Protection Package – Z71 Off-Road suspension, Hill Descent Control, skid plates, heavy-duty air filter, Z71 badge; includes 275/60R20 all-terrain tires, Chevytec spray-on bedliner with logo and all-weather floor liners with Z71 logo

POPULAR OPTIONS FOR CONSIDERATION

Assist steps – power-retractable with foot-activated rearward articulation to provide bed access

Mirrors – vertical trailering, heated and auto-dimming upper glass (driver and passenger), power-adjustable, power-folding and manual-extending with lower convex mirrors, integrated turn signal indicators, puddle lamps, perimeter lighting, auxiliary lighting and memory

Trailer Tire Pressure Monitor Sensors – set of four (separate installation required)



Auxiliary Accessory Trailer Camera from Chevrolet Accessories⁸



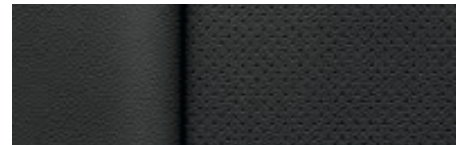
Hard Tri-Fold Tonneau Cover from Chevrolet Accessories⁸



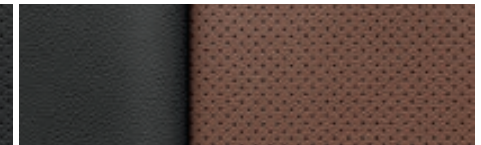
4-Inch Round Assist Steps in Chrome from Chevrolet Accessories⁸

¹ Extra-cost color. ² Late availability. ³ Chevrolet Infotainment System functionality varies by model. Full functionality requires compatible Bluetooth and smartphone, and USB connectivity for some devices. ⁴ Map coverage available in the United States, Puerto Rico and Canada. ⁵ Requires active service plan and paid AT&T vehicle data plan or compatible device with 3G/4G LTE tethering data plan. Visit onstar.com for details and limitations. ⁶ The system wirelessly charges one compatible mobile device. Some phones have built-in wireless charging technology and others require a special adaptor/back cover. To check for phone or other device compatibility, visit my.chevrolet.com/learn or consult your carrier. ⁷ Read the vehicle Owner's Manual for important feature limitations and information. ⁸ Chevrolet Accessories are dealer-installed and covered by the GM 3-year/36,000-mile (whichever comes first) New Vehicle Limited Warranty when ordered with your new Silverado. See your dealer for details. ⁹ Non-GM warranty. Limited warranty by Advantage, 5 years. For more information, contact your dealer.

HIGH COUNTRY & POPULAR EQUIPPED MODEL



Jet Black Perforated Leather Seating Surfaces



Jet Black/Umber Perforated Leather Seating Surfaces (shown)



20" Painted-Aluminum Wheels with Machined Face and Light Argent Pockets (NZJ) Standard on High Country



22" Polished-Aluminum Wheels (RVA) Available on High Country

HIGH COUNTRY In addition to or replacing LTZ features, High Country includes:

MECHANICAL

Exhaust – dual-outlet with polished rectangular tips

Transfer case – Autotrac 2-speed electronic (4x4 models)

EXTERIOR

Assist steps – chrome, wheel-to-wheel

Bedliner – Black Chevytec spray-on bedliner with High Country logo

Bumpers – body-color, front and rear

Grille – chrome bars with high-gloss Black mesh and chrome/bronze inserts

Headlamps – high-intensity LED reflector headlamps with LED daytime running lamps

Mirror caps – body-color

Recovery hooks¹ – chrome

INTERIOR

Audio system – Bose premium 7-speaker sound system with Richbass woofer

Driver Information Center – enhanced 8-inch diagonal multi-color configurable display, includes analog speedometer and tachometer

Entertainment – Chevrolet Infotainment 3 Premium system² with Navigation,³ 8-inch diagonal HD color touch-screen, AM/FM stereo, HD Radio,[®] Bluetooth[®] audio streaming⁴ for two active devices, wireless Apple CarPlay^{®5} and wireless Android Auto^{™6} compatibility, available Alexa Built-In,⁷ enhanced voice recognition, additional memory for available In-Vehicle Apps⁸ and Connected Navigation⁹

Floor mats – front and second-row carpeted

Wireless charging¹⁰

¹ To avoid the risk of injury, never use recovery hooks to tow a vehicle. See the Owner's Manual for more information. ² Chevrolet Infotainment System functionality varies by model. Full functionality requires compatible Bluetooth and smartphone, and USB connectivity for some devices. ³ Map coverage available in the United States, Puerto Rico and Canada. ⁴ Go to my.chevrolet.com/learnAbout/bluetooth to find out which phones are compatible with the vehicle. Full Bluetooth feature functionality varies by device, model and software version. ⁵ Vehicle user interface is a product of Apple and its terms and privacy statements apply. Requires compatible iPhone and data plan rates apply. ⁶ Vehicle user interface is a product of Google and its terms and privacy statements apply. Requires the Android Auto app on Google Play and a compatible Android smartphone. Data plan rates apply. You can check which smartphones are compatible at g.co/androidauto/requirements. ⁷ Functionality is subject to limitations and varies by vehicle, infotainment system and location. Select service plan required. Certain Alexa Skills require account linking to use. Amazon, Alexa and all related logos and motion marks are trademarks of Amazon.com, Inc. or its affiliates. Visit onstar.com for additional details. ⁸ Requires active service plan and paid AT&T vehicle data plan or compatible device with 3G/4G LTE tethering data plan. Visit onstar.com for details and limitations. ⁹ Connected Navigation and Real-time Points of Interest (POI) only available on properly equipped vehicles. Requires paid plan or trial. Map coverage available in the United States, Puerto Rico and Canada. Visit onstar.com for details and limitations. ¹⁰ The system wirelessly charges one compatible mobile device. Some phones have built-in wireless charging technology and others require a special adaptor/back cover. To check for phone or other device compatibility, visit my.chevrolet.com/learn or consult your carrier.

HIGH COUNTRY & POPULAR EQUIPPED MODEL (CONTINUED)

Summit White (GAZ)

Iridescent Pearl Tricoat¹ (G1W)

Silver Ice Metallic (GAN)

Satin Steel Metallic (G9K)

Oxford Brown Metallic (GNK)

Cherry Red Tintcoat¹ (GSK)

Northsky Blue Metallic (GAO)

Mosaic Black Metallic² (GB8)

Black (GBA)



HIGH COUNTRY CREW CAB SHORT BED 4x4 Popular Equipped Model includes:

Available Engines – 5.3L EcoTec3 V8 (L84), 6.2L EcoTec3 V8 (L87) or Duramax 3.0L Turbo-Diesel I-6 (LM2)

High Country Deluxe Package – Safety Package II (Adaptive Cruise Control³; Automatic Emergency Braking³; Following Distance Indicator³; Forward Collision Alert³; Front Pedestrian Braking³; Lane Keep Assist with Lane Departure Warning³; Safety Alert Seat³ and IntelliBeam), power sunroof, 22" polished-aluminum wheels (RVA), 275/50R22 all-season tires and all-weather floor liners (not available with Z71 Off-Road Package)

Technology Package – HD Surround Vision³ with two trailer view camera provisions, Rear Camera Mirror³; Bed View Camera³ and Head-Up Display

POPULAR OPTIONS FOR CONSIDERATION

Assist steps – power-retractable with foot-activated rearward articulation to provide bed access

Mirrors – vertical trairling, heated and auto-dimming upper glass (driver and passenger), power-adjustable, power-folding and manual-extending with lower convex mirrors, integrated turn signal indicators, puddle lamps, perimeter lighting, auxiliary lighting and memory

Trailer Tire Pressure Monitor Sensors – set of four (separate installation required)



Auxiliary Accessory Trailer Camera from Chevrolet Accessories⁴



Hard Tri-Fold Tonneau Cover from Chevrolet Accessories⁵



Bowtie Emblem in Black from Chevrolet Accessories⁴

¹ Extra-cost color. ² Late availability. ³ Read the vehicle Owner's Manual for important feature limitations and information. ⁴ Chevrolet Accessories are dealer-installed and covered by the GM 3-year/36,000-mile (whichever comes first) New Vehicle Limited Warranty when ordered with your new Silverado. See your dealer for details. ⁵ Non-GM warranty. Limited warranty by Advantage, 5 years. For more information, contact your dealer.

SPECIFICATIONS

● STANDARD ○ AVAILABLE – NOT AVAILABLE

	WT	CUSTOM	CUSTOM TB	LT	RST	LT TB	LTZ	HIGH COUNTRY
MECHANICAL								
4.3L EcoTec3 V6 engine with Active Fuel Management and 6-speed automatic transmission; 285 hp @ 5300 rpm, 305 lb.-ft. of torque @ 3900 rpm (limited availability on Custom)	●	●	●	-	-	-	-	-
2.7L Turbo engine with Active Fuel Management and 8-speed automatic transmission; 310 hp @ 5600 rpm, 348 lb.-ft. of torque @ 1500 rpm (WT requires Double Cab or Crew Cab and available WT Value Package or WT Convenience Package, Jet Black cloth interior, single-zone semi-automatic air conditioning, 120-volt bed- and instrument panel-mounted power outlets [400 watts shared], and available OnStar; ¹ Custom requires available single-zone semi-automatic air conditioning and 120-volt bed- and instrument panel-mounted power outlets [400 watts shared])	○	○	-	●	●	-	-	-
5.3L EcoTec3 V8 engine with Active Fuel Management and 6-speed automatic transmission; 355 hp @ 5600 rpm, 383 lb.-ft. of torque @ 4100 rpm (limited availability on Custom)	○	○	○	-	-	-	-	-
5.3L EcoTec3 V8 engine with Dynamic Fuel Management and 8-speed automatic transmission (LT, RST, LTZ and High Country 2WD) or 10-speed automatic transmission (LT Trail Boss and High Country 4x4 ²); 355 hp @ 5600 rpm, 383 lb.-ft. of torque @ 4100 rpm	-	-	-	○	○	●	●	●
6.2L EcoTec3 V8 engine with Dynamic Fuel Management and 10-speed automatic transmission; 420 hp @ 5600 rpm, 460 lb.-ft. of torque @ 4100 rpm (4x4 models); Custom Trail Boss, RST and LTZ include dual-outlet exhaust with polished rectangular tips (Custom Trail Boss requires available single-zone semi-automatic air conditioning)	-	-	○	-	○	○	○	○
Duramax 3.0L Turbo-Diesel I-6 engine and 10-speed automatic transmission; 277 hp @ 3750 rpm, 460 lb.-ft. of torque @ 1500 rpm; includes engine block heater (not available on Crew Cab Standard Bed LT 2WD)	-	-	-	○	○	-	○	○
Auto stop/start (WT and Custom require available 2.7L Turbo engine; Custom Trail Boss requires available 6.2L V8 engine)	○	○	○	●	●	●	●	●
Differential: Automatic locking rear	○	○	●	●	●	●	●	●
Engine block heater	○	○	○	○	○	○	○	○
Exhaust: Dual-outlet with polished rectangular tips (Custom requires available 5.3L V8 engine; Custom Trail Boss requires available 5.3L V8 engine or 6.2L V8 engine; LT requires available Z71 Off-Road Package; RST requires available Z71 Off-Road Package, Rally Edition or 6.2L V8 engine; LTZ requires available Z71 Off-Road Package or 6.2L V8 engine)	-	○	○	○	○	●	○	●
Hitch Guidance ³ (WT requires available Trailing Package)	○	●	●	●	●	●	●	●
Hitch Guidance with Hitch View ³ (LT, RST and LT Trail Boss require available Advanced Trailing Package)	-	-	-	○	○	○	●	●
Skid plates (4x4 models) (WT requires available Work Truck Package, Z71 Off-Road Package or Snow Plow Prep Package; LT and LTZ require available Z71 Off-Road Package or Snow Plow Prep Package; RST and High Country require available Z71 Off-Road Package)	○	-	●	○	○	●	○	○

	WT	CUSTOM	CUSTOM TB	LT	RST	LT TB	LTZ	HIGH COUNTRY
MECHANICAL (CONTINUED)								
Suspension: Adaptive Ride Control (requires available 22" polished-aluminum wheels [RVA])	-	-	-	-	-	-	-	○
Trailer brake controller: Integrated (Double Cab and Crew Cab WT require available Trailing Package; Regular Cab WT requires available Trailing Package and WT Convenience Package or WT Value Package)	○	○	○	○	○	○	●	●
Trailer Tire Pressure Monitor Sensors: Set of four (separate installation required) (LT, RST and LT Trail Boss require available Advanced Trailing Package)	-	-	-	○	○	○	○	○
Transfer case: Single-speed, electronic Autotrac with push-button control (4x4 models)	●	●	-	●	●	-	●	-
2-speed, electronic Autotrac with push-button control (4x4 models) (Double Cab and Crew Cab WT require available Z71 Off-Road Package; LT requires available Z71 Off-Road Package; RST and LTZ require available Z71 Off-Road Package or 6.2L V8 engine)	○	-	●	○	○	●	○	●
EXTERIOR								
Assist steps: Chrome, wheel-to-wheel (Crew Cab) (Custom requires available Custom Max Trailing Package)	-	○	-	○	○	-	○	●
Power-retractable with foot-activated rearward articulation to provide bed access	-	-	-	-	-	-	○	○
Bedliner: Chevytec spray-on with logo (bed only; tailgate has Black composite inner panel) (LT, RST and LT Trail Boss require available Bed Protection Package)	○	○	○	○	○	○	○	●
Glass: Solar-absorbing	●	-	-	-	-	-	-	-
Deep-tinted behind front doors	○	●	●	●	●	●	●	●
IntelliBeam: Automatic high beam on/off (requires available Safety Package II)	-	-	-	-	-	-	○	○
Mirrors: Manual-adjustable	●	-	-	-	-	-	-	-
Heated, power-adjustable (WT requires available WT Convenience Package)	○	●	●	●	●	●	-	-
Heated, power-adjustable, power-folding with memory and driver-side auto-dimming features, puddle lamps, and perimeter lighting	-	-	-	-	-	-	●	●
Vertical trairling, heated upper glass, power-adjustable, manual-folding and manual-extending with lower convex mirrors, integrated turn signal indicators, clearance lamps and auxiliary lighting; includes inside rearview auto-dimming mirror (WT requires available WT Convenience Package, WT Value Package and Trailing Package; Custom requires available Custom Max Trailing Package)	○	○	-	○	○	○	-	-
Vertical trairling, heated and auto-dimming upper glass (driver and passenger), power-adjustable, power-folding and manual-extending with lower convex mirrors, integrated turn signal indicators, puddle lamps, perimeter lighting, auxiliary lighting and memory; High Country includes chrome mirror caps (requires available Technology Package)	-	-	-	-	-	-	○	○

¹ When you select a monthly plan within 30 days of activating your 1-month trial, you'll receive the next 2 months of the plan you select at no additional charge when you associate an approved payment method on file to your account and authorize recurring payments for your service plan. The amount and frequency of each recurring payment is based upon the service(s) and payment interval(s) you select from the options provided. After the trial expires, OnStar will automatically bill your payment method monthly at then-current standard monthly rates. Plans containing 4G LTE data will be billed every 30 days by AT&T. You may cancel at any time by pushing your blue OnStar button or calling 1-888-466-7827. May not be combined with other offers or retroactively applied. Offer subject to change. ² Limited production available with 8-speed automatic transmission. ³ Read the vehicle Owner's Manual for important feature limitations and information.

SPECIFICATIONS (CONTINUED)

● STANDARD ○ AVAILABLE – NOT AVAILABLE

	WT	CUSTOM	CUSTOM TB	LT	RST	LT TB	LTZ	HIGH COUNTRY
EXTERIOR (CONTINUED)								
Tailgate: Manual lift	●	-	-	-	-	-	-	-
EZ Lift, power lock and release (WT requires available WT Convenience Package; LTZ and High Country require available Multi-Flex Tailgate)	○	●	●	●	●	●	○	○
Power-up/-down tailgate function, power lock and release (LT, RST and LT Trail Boss require available Convenience Package II; not available with Multi-Flex Tailgate)	-	-	-	○	○	○	●	●
Multi-Flex, with six functional load/access features (WT requires available WT Convenience Package or WT Value Package; LT, RST and LT Trail Boss require available Convenience Package II; LTZ and High Country require available EZ Lift power lock and release tailgate; Custom and RST not available with Rally Edition; not available with power-up/-down tailgate)	○	○	○	○	○	○	○	○
Tires: 255/70R17 all-season	●	-	-	●	-	-	-	-
265/70R17 all-terrain	○	-	-	○	-	-	-	-
LT265/70R17 all-terrain	○	-	-	○	-	-	-	-
265/65R18 all-season (LT requires available 18" Bright Silver-painted aluminum wheels [PZX])	-	-	-	○	●	-	-	-
265/65R18 all-terrain (LT requires available 18" Bright Silver-painted aluminum wheels [PZX])	-	-	-	○	○	-	-	-
265/65R18 all-terrain, white outlined letter (LT requires available 18" Bright Silver-painted aluminum wheels [PZX])	-	-	-	○	○	-	-	-
LT275/65R18 Goodyear Wrangler DuraTrac® MT (LT and RST require available Diesel Off-Road Package)	-	-	●	○	○	●	-	-
275/60R20 all-season (LT and RST require available 20" painted-aluminum wheels with machined face and Argent Metallic pockets [RD4]; High Country requires 2WD)	-	●	-	○	○	-	●	●
275/60R20 all-terrain; included on High Country 4x4 (LT and RST require available 20" painted-aluminum wheels with machined face and Argent Metallic pockets [RD4])	-	○	-	○	○	-	○	○
LT265/60R20 Goodyear Wrangler® Territory MT (requires available 20" high-gloss Black-painted aluminum wheels [RD5])	-	-	○	-	-	○	-	-
275/50R22 all-season (LT and LTZ require 22" wheels from Chevrolet Accessories; ¹ RST requires available Rally Edition or 22" wheels from Chevrolet Accessories; ¹ High Country requires available 22" polished-aluminum wheels [RVA])	-	-	-	○	○	-	○	○
Wheelhouse liners: Rear (LT, RST and LT Trail Boss require available Bed Protection Package)	-	-	-	○	○	○	●	●
SAFETY & SECURITY								
Automatic Emergency Braking ² (WT, Custom and Custom Trail Boss require available Safety Confidence Package; LTZ and High Country require available Safety Package II)	○	○	○	-	-	-	○	○

	WT	CUSTOM	CUSTOM TB	LT	RST	LT TB	LTZ	HIGH COUNTRY
SAFETY & SECURITY (CONTINUED)								
Following Distance Indicator ² (requires available Safety Package II)	-	-	-	-	-	-	○	○
Forward Collision Alert ² (WT, Custom and Custom Trail Boss require available Safety Confidence Package; LTZ and High Country require available Safety Package II)	○	○	○	-	-	-	○	○
Front and Rear Park Assist ² (WT requires available WT Safety Package; LT, RST and LT Trail Boss require available Safety Package)	○	-	-	○	○	○	●	●
Front Pedestrian Braking ² (WT, Custom and Custom Trail Boss require available Safety Confidence Package; LTZ and High Country require available Safety Package II)	○	○	○	-	-	-	○	○
Lane Change Alert with Side Blind Zone Alert ² (WT requires available WT Safety Package; LT, RST and LT Trail Boss require available Safety Package)	○	-	-	○	○	○	●	●
Lane Keep Assist with Lane Departure Warning ² (requires available Safety Package II)	-	-	-	-	-	-	○	○
Rear Cross Traffic Alert ² (WT requires available WT Safety Package; LT, RST and LT Trail Boss require available Safety Package)	○	-	-	○	○	○	●	●
Rear Vision Camera ²	●	●	●	●	●	●	-	-
HD Rear Vision Camera ² (LT, RST and LT Trail Boss require available Convenience Package II)	-	-	-	○	○	○	●	●
HD Surround Vision ² with two trailer view camera provisions (requires available Technology Package)	-	-	-	-	-	-	○	○
Safety Alert Seat ² (requires available Safety Package II)	-	-	-	-	-	-	○	○
Teen Driver technology	●	●	●	●	●	●	●	●
Theft-deterrent system: Unauthorized entry	-	●	●	●	●	●	●	●
Tire Pressure Monitoring System: With Tire Fill Alert (does not monitor spare tire)	●	●	●	●	●	●	●	●
Up to 3 months of OnStar Safety & Security coverage ³ (WT requires available SiriusXM ^{®4} All Access Package)	○	●	●	●	●	●	●	●
INTERIOR								
Bed View Camera: ² Shows view of cargo bed, includes two trailer view camera provisions (LT, RST and LT Trail Boss require available Convenience Package II, Advanced Trailering Package and Safety Package)	-	-	-	○	○	○	○	○
Center console: Floor-mounted with cup holders, cell phone storage, power cord management and hanging file holder capability (RST requires available Convenience Package with Bucket Seats)	-	-	-	-	○	●	●	●
Compass: Display in instrument cluster (WT requires available OnStar ³)	○	●	●	●	●	●	●	●

¹ Chevrolet Accessories are dealer-installed and covered by the GM 3-year/36,000-mile (whichever comes first) New Vehicle Limited Warranty when ordered with your new Silverado. See your dealer for details. ² Read the vehicle Owner's Manual for important feature limitations and information. ³ When you select a monthly plan within 30 days of activating your 1-month trial, you'll receive the next 2 months of the plan you select at no additional charge when you associate an approved payment method on file to your account and authorize recurring payments for your service plan. The amount and frequency of each recurring payment is based upon the service(s) and payment interval(s) you select from the options provided. After the trial expires, OnStar will automatically bill your payment method monthly at then-current standard monthly rates. Plans containing 4G LTE data will be billed every 30 days by AT&T. You may cancel at any time by pushing your blue OnStar button or calling 1-888-466-7827. May not be combined with other offers or retroactively applied. Offer subject to change. ⁴ If you decide to continue service after your trial, the subscription plan you choose will automatically renew thereafter and you will be charged according to your chosen payment method at then-current rates. Fees and taxes apply. See the SiriusXM Customer Agreement at siriusxm.com for complete terms and how to cancel. All fees, content, features and availability are subject to change.

SPECIFICATIONS (CONTINUED)

● STANDARD ○ AVAILABLE – NOT AVAILABLE

	WT	CUSTOM	CUSTOM TB	LT	RST	LT TB	LTZ	HIGH COUNTRY
INTERIOR (CONTINUED)								
Cruise control: Electronic with Set and Resume Speed Adaptive Cruise Control ¹ (requires available Safety Package II)	○	●	●	●	●	●	●	●
Driver Information Center: 3.5-inch diagonal monochromatic display 4.2-inch diagonal color display and driver personalization (WT, Custom and Custom Trail Boss require available Safety Confidence Package) Enhanced with 8-inch diagonal multi-color configurable display, includes analog speedometer and tachometer (LTZ requires available Technology Package)	○	○	○	●	●	●	●	–
Floor liners: Front and rear with removable carpet inserts (LT, RST, LT Trail Boss and LTZ require available Chevytec spray-on bedliner with logo; not available with Z71 Off-Road and Protection Package on LT and RST)	–	–	–	○	○	○	○	○
Head-Up Display: 15-inch diagonal multi-color (requires available Technology Package)	–	–	–	–	–	–	○	○
Power outlets: 120-volt, instrument panel- and bed-mounted (400 watts shared) (WT requires available WT Convenience Package; Custom requires available 2.7L Turbo engine; LT, RST and LT Trail Boss require available Convenience Package II)	○	○	–	○	○	○	●	●
Rear Camera Mirror ¹ (requires available Technology Package)	–	–	–	–	–	–	○	○
Sunroof: Power (Crew Cab) (RST and LT Trail Boss require available Convenience Package II)	–	–	–	–	○	○	○	○
Universal Home Remote: Programmable, includes garage door opener (LT, RST and LT Trail Boss require available Convenience Package II)	–	–	–	○	○	○	●	●
Window: Power-sliding rear window with defogger (LT, RST and LT Trail Boss require available Convenience Package II)	–	–	–	○	○	○	●	●
Wireless charging ² (LTZ requires available LTZ Convenience Package II)	–	–	–	–	–	–	○	●
ENTERTAINMENT								
Chevrolet Infotainment 3 system ³ with 7-inch diagonal color touch-screen, AM/FM stereo, Bluetooth [®] audio streaming ⁴ for two active devices, voice command pass-through to compatible phone, and Apple CarPlay ^{®5} and Android Auto ^{™6} compatibility	●	●	●	–	–	–	–	–

	WT	CUSTOM	CUSTOM TB	LT	RST	LT TB	LTZ	HIGH COUNTRY
ENTERTAINMENT (CONTINUED)								
Chevrolet Infotainment 3 system ³ with 8-inch diagonal color touch-screen, includes features listed above	–	–	–	●	●	●	–	–
Chevrolet Infotainment 3 Plus system ³ with 8-inch diagonal HD color touch-screen, includes features listed above, HD Radio, [®] wireless Apple CarPlay ^{®5} and wireless Android Auto ^{™7} compatibility, available Alexa Built-In, ⁸ voice recognition and available In-Vehicle Apps ⁹ (LT, RST and LT Trail Boss require available Convenience Package II)	–	–	–	○	○	○	●	–
Chevrolet Infotainment 3 Premium system ³ with Navigation, ¹⁰ includes features listed above for Plus system, enhanced voice recognition and available Connected Navigation ¹¹ (LTZ requires available LTZ Convenience Package II)	–	–	–	–	–	–	○	●
Bose premium 7-speaker sound system with Richbass subwoofer (RST and LT Trail Boss require available Convenience Package II; LTZ requires available LTZ Convenience Package II)	–	–	–	–	○	○	○	●
Media: Two USB ports ¹² on instrument panel	●	●	●	●	●	●	●	●
SD card reader on instrument panel (requires available Convenience Package II)	–	–	–	○	–	–	–	–
Two USB ports ¹² ; SD card reader and auxiliary input jack inside front center floor console (RST requires available Convenience Package with Bucket Seats and Convenience Package II; LT Trail Boss requires available Convenience Package II)	–	–	–	–	○	○	●	●
SiriusXM ¹³ – All Access Package with 3-month trial subscription (WT requires available OnStar ¹⁴)	○	●	●	●	●	●	–	–
SiriusXM with 360L ^{13,15} – All Access Package with 3-month trial subscription (LT, RST and LT Trail Boss require available Convenience Package II)	–	–	–	○	○	○	●	●
Available 4G LTE Wi-Fi ^{®16} Hotspot for up to seven devices, includes 1 month or 3 GB of data (whichever comes first) (WT requires available OnStar ¹⁴)	○	○	○	○	○	○	○	○
Chevrolet Connected Access ¹⁷ with up to 10 years of standard connectivity, which currently enables features such as Vehicle Diagnostics and Dealer Maintenance Notification (WT requires available OnStar ¹⁴)	○	●	●	●	●	●	●	●

1 Read the vehicle Owner's Manual for important feature limitations and information. **2** The system wirelessly charges one compatible mobile device. Some phones have built-in wireless charging technology and others require a special adaptor/back cover. To check for phone or other device compatibility, visit my.chevrolet.com/learn or consult your carrier. **3** Chevrolet Infotainment System functionality varies by model. Full functionality requires compatible Bluetooth and smartphone, and USB connectivity for some devices. **4** Go to my.chevrolet.com/learnAbout/bluetooth to find out which phones are compatible with the vehicle. Full Bluetooth feature functionality varies by device, model and software version. **5** Vehicle user interface is a product of Apple and its terms and privacy statements apply. Requires compatible iPhone and data plan rates apply. **6** Vehicle user interface is a product of Google and its terms and privacy statements apply. Requires the Android Auto app on Google Play and an Android compatible smartphone running Android 5.0 or higher. Data plan rates apply. **7** Vehicle user interface is a product of Google and its terms and privacy statements apply. Requires the Android Auto app on Google Play and a compatible Android smartphone. Data plan rates apply. You can check which smartphones are compatible at g.co/androidauto/requirements. **8** Functionality is subject to limitations and varies by vehicle, infotainment system and location. Select service plan required. Certain Alexa Skills require account linking to use. Amazon, Alexa and all related logos and motion marks are trademarks of Amazon.com, Inc. or its affiliates. Visit onstar.com for additional details. **9** Requires active service plan and paid AT&T vehicle data plan or compatible device with 3G/4G LTE tethering data plan. Visit onstar.com for details and limitations. **10** Map coverage available in the United States, Puerto Rico and Canada. **11** Connected Navigation and Real-time Points of Interest (POI) only available on properly equipped vehicles. Requires paid plan or trial. Map coverage available in the United States, Puerto Rico and Canada. Visit onstar.com for details and limitations. **12** Not compatible with all devices. **13** If you decide to continue service after your trial, the subscription plan you choose will automatically renew thereafter and you will be charged according to your chosen payment method at then-current rates. Fees and taxes apply. See the SiriusXM Customer Agreement at siriusxm.com for complete terms and how to cancel. All fees, content, features and availability are subject to change. **14** When you select a monthly plan within 30 days of activating your 1-month trial, you'll receive the next 2 months of the plan you select at no additional charge when you associate an approved payment method on file to your account and authorize recurring payments for your service plan. The amount and frequency of each recurring payment is based upon the service(s) and payment interval(s) you select from the options provided. After the trial expires, OnStar will automatically bill your payment method monthly at then-current standard monthly rates. Plans containing 4G LTE data will be billed every 30 days by AT&T. You may cancel at any time by pushing your blue OnStar button or calling 1-888-466-7827. May not be combined with other offers or retroactively applied. Offer subject to change. **15** Certain features require a SiriusXM subscription and the Chevrolet Connected Access plan. See siriusxm.com and onstar.com for details and limitations. **16** Service varies with conditions and location. Requires active service and paid AT&T data plan. Visit onstar.com for details and limitations. Availability subject to change. **17** Standard connectivity available only to original purchaser for up to 10 years. Connected Access services are subject to change. Does not include emergency or security services. Diagnostic capabilities vary by model and service plan. Message and data rates may apply. Requires contact method on file and enrollment to receive alerts. Not all issues will deliver alerts. Visit onstar.com for details and limitations.

AVAILABLE PACKAGES & SPECIAL EDITIONS

● STANDARD ○ AVAILABLE – NOT AVAILABLE

	WT	CUSTOM	CUSTOM TB	LT	RST	LT TB	Ltz	HIGH COUNTRY
MECHANICAL								
Work Truck Package	○	–	–	–	–	–	–	–
Skid plates and heavy-duty air filter (requires available all-terrain tires; not available with Z71 Off-Road Package or Snow Plow Prep Package)								
Snow Plow Prep Package (4x4 models)	○	–	–	○	–	–	–	–
Power feed for backup and roof emergency light, 220-amp alternator, heavy-duty air filter, skid plates and heavy-duty front springs (WT requires available 5.3L V8 engine and 17" painted-steel wheels [RD6]; LT requires available Z71 Off-Road Package and 5.3L V8 engine)								
Trailer Package	○	●	●	●	●	●	●	●
Trailer hitch, 7-pin and 4-pin connectors, and Hitch Guidance ¹								
Custom Max Trailing Package (Crew Cab Short Bed 4x4)	–	○	–	–	–	–	–	–
Trailer mirrors, dual-outlet exhaust with polished rectangular tips, chrome wheel-to-wheel assist steps, Chevytec spray-on bedliner with logo, 3.73 axle ratio, Cloth Rear Seat with Storage Package, all-weather floor liners, tiered storage, rear wheelhouse liners, rubber bed mat, tri-fold hard tonneau cover and cargo tie-down rings								
Max Trailing Package	–	○	–	○	○	–	○	○
9.76" rear axle, enhanced cooling radiator, revised shock tuning for increased control, heavier-duty rear springs, increased RGAWR ² and 220-amp alternator; LT and RST include integrated trailer brake controller; LT, RST, LTZ and High Country include 3.42 axle ratio (Custom requires available Custom Max Trailing Package; LT requires available 5.3L V8 engine and 18" or 20" wheels; RST requires available 5.3L V8 engine or 6.2L V8 engine and 18" or 20" wheels [Double Cab requires 20" wheels with 6.2L V8 engine]; LTZ requires 5.3L V8 engine or available 6.2L V8 engine; High Country requires 4x4 and available 6.2L V8 engine; not available with Z71 Off-Road Package or 22" wheels)								
Advanced Trailing Package	–	–	–	○	○	○	●	●
Hitch Guidance with Hitch View ¹ ; integrated trailer brake controller and Advanced Trailing System (LT, RST and LT Trail Boss require available Convenience Package II)								
Diesel Off-Road Package (4x4 models)	–	–	–	○	○	–	–	–
3.73 axle ratio, LT275/65R18C Goodyear Wrangler DuraTrac [®] MT tires and tri-fold hard tonneau cover; Crew Cab includes chrome wheel-to-wheel assist steps; not available with Max Trailing Package, Z71 Off-Road and Protection Package, 20" aluminum wheels (RD4), 20" tires, any other assist steps or tonneau cover; LT not available with Snow Plow Prep Package; RST not available with Rally Edition (requires available Duramax 3.0L engine and Z71 Off-Road Package; RST requires Crew Cab Short Bed)								

	WT	CUSTOM	CUSTOM TB	LT	RST	LT TB	Ltz	HIGH COUNTRY
MECHANICAL (CONTINUED)								
Z71 Off-Road Package (4x4 models)	○	–	●	○	○	●	○	○
Off-Road suspension, Hill Descent Control, skid plates, heavy-duty air filter, all-terrain tires and Z71 badge; WT includes automatic locking rear differential and 2-speed transfer case; Custom Trail Boss and LT Trail Boss include 2-inch factory lifted suspension and Goodyear Wrangler DuraTrac MT tires; LT and RST include dual-outlet exhaust with polished rectangular tips, 18" Bright Silver-painted aluminum wheels (PZX) and 2-speed transfer case; LTZ includes 2-speed transfer case and dual-outlet exhaust with polished rectangular tips; High Country does not include Z71 badge (WT requires Double Cab or Crew Cab and available Trailing Package; not available with Work Truck Package; LT and RST not available with 2.7L Turbo engine, Max Trailing Package or 22" wheels; LTZ not available with Max Trailing Package or 22" wheels; High Country not available with High Country Deluxe, Max Trailing Package or 22" wheels)								
EXTERIOR								
Rally Edition	–	○	–	–	○	–	–	–
Black badges, Black Chevrolet lettered tailgate, Black rally stripes, 4-inch Black round assist steps, and Black exhaust tip(s); Custom includes Black bowtie emblem on grille and steering wheel, Chevytec spray-on bedliner with logo and 20" high-gloss Black-painted aluminum wheels (RD5); RST includes Bed Protection Package, 22" high-gloss Black-painted aluminum wheels (SGM) and 275/50R22 all-season tires (Custom requires available 2.7L Turbo engine; Custom and RST not available with any other assist steps or Multi-Flex Tailgate; RST not available with any other 22" wheels or Duramax 3.0L engine) (available with Summit White, Silver Ice Metallic, Red Hot or Black exterior colors)								
Midnight Edition	–	–	○	–	–	○	–	–
Black badges, dual-outlet exhaust with Black rectangular tips and Black exterior color; Custom Trail Boss includes Chevytec spray-on bedliner with logo, all-weather floor liners with Z71 logo and Silver-hammer interior trim kit; LT Trail Boss includes high-intensity LED headlamps with dark bezels and Bed Protection Package (Custom Trail Boss requires available 5.3L V8 engine or 6.2L V8 engine; LT Trail Boss requires available 6.2L V8 engine, Convenience Package II, Leather Package and Jet Black interior color)								
Realtree[®] Special Edition (late availability) (Crew Cab Short Bed)	–	–	○	–	–	–	–	–
Realtree graphics on hood, bed side and Chevrolet lettered tailgate, Chevytec spray-on bedliner with Realtree logo, Realtree interior door trim, Black Custom, Silverado and Z71 badges, 4-inch Black round assist steps, dual-outlet exhaust with Black rectangular tips and all-weather floor liners with Z71 logo; includes Black 6.2L V8 hood badge with available 6.2L V8 engine (requires available 5.3L V8 engine or 6.2L V8 engine) (available with Summit White, Oxford Brown Metallic or Black exterior colors)								
Bed Protection Package	–	–	–	○	○	○	–	–
Rear wheelhouse liners and Chevytec spray-on bedliner with logo; not available on Crew Cab LT and RST Short Bed 2WD with available Duramax 3.0L engine								

¹ Read the vehicle Owner's Manual for important feature limitations and information. ² Rear Gross Axle Weight Rating.

AVAILABLE PACKAGES & SPECIAL EDITIONS (CONTINUED)

● STANDARD ○ AVAILABLE – NOT AVAILABLE

	WT	CUSTOM	CUSTOM TB	LT	RST	LT TB	LTZ	HIGH COUNTRY
EXTERIOR (CONTINUED)								
Z71 Off-Road and Protection Package (4x4 models)	–	–	–	○	○	–	○	–
Z71 Off-Road Package, Chevytec spray-on bedliner with logo and all-weather floor liners with Z71 logo; LT and RST include rear wheelhouse liners; LTZ includes all-terrain tires (LT requires available all-terrain tires, 5.3L V8 engine or Duramax 3.0L engine; RST requires available all-terrain tires and 5.3L V8 engine, 6.2L V8 engine or Duramax 3.0L engine; not available with Max Trailering Package)								
Redline Edition (late availability)	–	–	–	–	○	–	–	–
High-gloss Black door handles and grille, Black Silverado badges with Red outline on fender and tailgate, Black RST badge on tailgate, Black Chevrolet lettered tailgate, Red recovery hooks; Red stripes on outside rearview mirrors, 20" high-gloss Black-painted aluminum wheels with Red accents (RPS), 275/60R20 tires, high-intensity LED headlamps with dark bezels, 4-inch Black round assist steps, dual-outlet exhaust with Black rectangular tips, rear wheelhouse liners and Chevytec spray-on bedliner with logo; includes Black 6.2L V8 hood badge with available 6.2L V8 engine (requires available 5.3L V8 engine or 6.2L V8 engine) (available with Summit White, Silver Ice Metallic or Black exterior colors; not available with Z71 Off-Road Package)								
INTERIOR								
WT Convenience Package	○	–	–	–	–	–	–	–
Remote Keyless Entry, EZ Lift power lock and release tailgate, deep-tinted windows behind front doors, rear-window defogger, cruise control, and outside heated power-adjustable mirrors; Regular Cab includes power door locks and power windows with driver express-up/-down and front passenger express-down								
WT Value Package	○	–	–	–	–	–	–	–
WT Convenience Package and Trailering Package								
WT Safety Package	○	–	–	–	–	–	–	–
Front and Rear Park Assist ² ; Lane Change Alert with Side Blind Zone Alert ² ; Rear Cross Traffic Alert ² ; chrome front and rear bumpers, high-gloss Black mirror caps and perimeter lighting; 2WD models include recovery hooks ¹ (requires available WT Convenience Package or WT Value Package and 120-volt bed- and instrument panel-mounted power outlets [400 watts shared])								
Safety Confidence Package	○	○	○	–	–	–	–	–
Automatic Emergency Braking ² ; Front Pedestrian Braking ² ; Forward Collision Alert ² ; steering wheel-mounted audio, cruise and phone controls, and 4.2-inch diagonal Driver Information Center; WT includes cruise control								
Custom Value Package	–	●	–	–	–	–	–	–
Custom Convenience Package, Infotainment Package and Trailering Package								
Custom Convenience Package	–	●	●	–	–	–	–	–
Remote vehicle starter system, unauthorized entry theft-deterrent system, rear-window defogger, EZ Lift power lock and release tailgate, and key fob-activated LED cargo area lighting								

	WT	CUSTOM	CUSTOM TB	LT	RST	LT TB	LTZ	HIGH COUNTRY
INTERIOR (CONTINUED)								
Infotainment Package	–	●	●	–	–	–	–	–
SiriusXM ^{®3} All Access Package with 3-month trial subscription; up to 3 months of OnStar Safety & Security and Chevrolet Connected Services coverage; ⁴ 1 month or 3 GB (whichever comes first) of available 4G LTE Wi-Fi ^{®5} Hotspot; up to 10 years of Chevrolet Connected Access; ⁶ compass located in instrument cluster								
Cloth Rear Seat with Storage Package (Crew Cab)	–	○	○	○	●	●	–	–
Rear in-seatback left and right storage compartments and center foldout armrest with two cup holders								
Uplevel Rear Seat with Storage Package (Crew Cab)	–	–	–	○	○	○	●	●
Underseat storage, rear in-seatback left and right storage compartments and center foldout armrest with two cup holders (LT, RST and LT Trail Boss require available Leather Package)								
Convenience Package with Bucket Seats	–	–	–	–	○	●	–	–
Front bucket seats and center floor console; Crew Cab includes Uplevel Rear Seat with Storage Package (requires available Leather Package)								
Convenience Package	–	–	–	●	●	–	–	–
Dual-zone automatic climate control, 10-way power driver seat adjuster with power lumbar control, heated driver and front outboard passenger seats, lockable front center underseat storage, heated leather-wrapped steering wheel, manual tilt/telescoping steering column with electric theft-deterrent locking feature, two charge-only USB ports ⁷ in second row, rear-seat 12-volt auxiliary outlet, Keyless Open and Start, remote vehicle starter system, unauthorized entry theft-deterrent system, rear-window defogger, EZ Lift power lock and release tailgate, and key fob-activated LED cargo area lighting								
Convenience Package II	–	–	–	○	○	○	–	–
Universal Home Remote, power-sliding rear window, 120-volt bed- and instrument panel-mounted power outlets (400 watts shared), Chevrolet Infotainment 3 Plus system ⁸ with available In-Vehicle Apps ⁹ ; HD Radio [®] SiriusXM [®] with 360L ^{3,10} All Access Package with 3-month trial subscription and HD Rear Vision Camera ² ; LT includes SD card reader on instrument panel; Crew Cab LT includes Cloth Rear Seat with Storage Package; RST and LT Trail Boss include Bose premium 7-speaker sound system, and two USB ports ⁷ ; SD card reader and auxiliary input jack inside center floor console (LT and LT Trail Boss require available integrated trailer brake controller; RST requires available Convenience Package with Bucket Seats and integrated trailer brake controller)								
Leather Package	–	–	–	○	○	○	–	–
Crew Cab includes Uplevel Rear Seat with Storage Package (LT and LT Trail Boss require available Convenience Package II; RST requires available Convenience Package with Bucket Seats and Convenience Package II)								

¹ To avoid the risk of injury, never use recovery hooks to tow a vehicle. See the Owner's Manual for more information. ² Read the vehicle Owner's Manual for important feature limitations and information. ³ If you decide to continue service after your trial, the subscription plan you choose will automatically renew thereafter and you will be charged according to your chosen payment method at then-current rates. Fees and taxes apply. See the SiriusXM Customer Agreement at siriusxm.com for complete terms and how to cancel. All fees, content, features and availability are subject to change. ⁴ When you select a monthly plan within 30 days of activating your 1-month trial, you'll receive the next 2 months of the plan you select at no additional charge when you associate an approved payment method on file to your account and authorize recurring payments for your service plan. The amount and frequency of each recurring payment is based upon the service(s) and payment interval(s) you select from the options provided. After the trial expires, OnStar will automatically bill your payment method monthly at then-current standard monthly rates. Plans containing 4G LTE data will be billed every 30 days by AT&T. You may cancel at any time by pushing your blue OnStar button or calling 1-888-466-7827. May not be combined with other offers or retroactively applied. Offer subject to change. ⁵ Service varies with conditions and location. Requires active service and paid AT&T data plan. Visit onstar.com for details and limitations. Availability subject to change. ⁶ Standard connectivity available only to original purchaser for up to 10 years. Connected Access services are subject to change. Does not include emergency or security services. Diagnostic capabilities vary by model and service plan. Message and data rates may apply. Requires contact method on file and enrollment to receive alerts. Not all issues will deliver alerts. Visit onstar.com for details and limitations. ⁷ Not compatible with all devices. ⁸ Chevrolet Infotainment System functionality varies by model. Full functionality requires compatible Bluetooth and smartphone, and USB connectivity for some devices. ⁹ Requires active service plan and paid AT&T vehicle data plan or compatible device with 3G/4G LTE tethering data plan. Visit onstar.com for details and limitations. ¹⁰ Certain features require a SiriusXM subscription and the Chevrolet Connected Access plan. See siriusxm.com and onstar.com for details and limitations.

AVAILABLE PACKAGES & SPECIAL EDITIONS (CONTINUED)

● STANDARD ○ AVAILABLE – NOT AVAILABLE

	WT	CUSTOM	CUSTOM TB	LT	RST	LT TB	LTZ	HIGH COUNTRY
INTERIOR (CONTINUED)								
All Star Edition	-	-	-	●	●	-	-	-
Convenience Package, automatic locking rear differential and Trailing Package								
All Star Edition Plus	-	-	-	○	○	-	-	-
Convenience Package II and 20" painted-aluminum wheels with machined face and Argent Metallic pockets (RD4) (RST requires available Convenience Package with Bucket Seats; not available with Texas Edition Plus)								
Texas Edition	-	-	-	●	●	-	-	-
LT Convenience Package, heavy-duty automatic locking rear differential, Trailing Package and Texas Edition badging (available only in Texas and surrounding states)								
Texas Edition Plus	-	-	-	○	○	-	-	-
Convenience Package II, 20" painted-aluminum wheels with machined face and Argent Metallic pockets (RD4) and Texas Edition badging (RST requires available Convenience Package with Bucket Seats; available only in Texas and surrounding states; not available with All Star Edition Plus)								
Safety Package	-	-	-	○	○	○	●	-
Front and Rear Park Assist ¹ ; Lane Change Alert with Side Blind Zone Alert ¹ ; Rear Cross Traffic Alert ¹ and perimeter lighting; LT 2WD models include front recovery hooks ²								
Safety Package II	-	-	-	-	-	-	○	○
Automatic Emergency Braking ¹ ; Following Distance Indicator ¹ ; Forward Collision Alert ¹ ; Front Pedestrian Braking ¹ ; Lane Keep Assist with Lane Departure Warning ¹ ; Safety Alert Seat ¹ ; IntelliBeam and Adaptive Cruise Control ¹								
LTZ Convenience Package	-	-	-	-	-	-	●	-
Heated and ventilated front bucket seats with center floor console, power-sliding rear window, Universal Home Remote, two USB ports ³ , SD card reader, auxiliary input jack, and power-up/-down tailgate with power lock and release; Crew Cab models include heated rear outboard seats								

	WT	CUSTOM	CUSTOM TB	LT	RST	LT TB	LTZ	HIGH COUNTRY
INTERIOR (CONTINUED)								
LTZ Convenience Package II	-	-	-	-	-	-	○	-
Chevrolet Infotainment 3 Premium system ⁴ with Navigation ⁵ and available In-Vehicle Apps ⁶ , Bose premium 7-speaker sound system and wireless charging ⁷								
LTZ Plus Package	-	-	-	-	-	-	●	-
LTZ Convenience Package and Safety Package								
LTZ Premium Package	-	-	-	-	-	-	○	-
LTZ Convenience Package II, Safety Package II and power sunroof (not available with LTZ Premium Texas Edition)								
LTZ Texas Edition	-	-	-	-	-	-	●	-
LTZ Convenience Package, Safety Package and Texas Edition badging (available only in Texas and surrounding states; not available with LTZ Premium Package)								
LTZ Premium Texas Edition	-	-	-	-	-	-	○	-
LTZ Convenience Package II, Safety Package II, power sunroof and Texas Edition badging (available only in Texas and surrounding states; not available with LTZ Premium Package)								
Technology Package	-	-	-	-	-	-	○	○
HD Surround Vision ¹ with two trailer view camera provisions, Rear Camera Mirror ¹ , Bed View Camera ¹ and Head-Up Display; LTZ includes enhanced Driver Information Center (LTZ requires available LTZ Convenience Package II and Safety Package II); High Country requires available Safety Package II)								
High Country Deluxe	-	-	-	-	-	-	-	○
Safety Package II, power sunroof, 22" polished-aluminum wheels (RVA), 275/50R22 all-season tires and all-weather floor liners (requires available Adaptive Ride Control suspension; not available with Z71 Off-Road Package)								

¹ Read the vehicle Owner's Manual for important feature limitations and information. ² To avoid the risk of injury, never use recovery hooks to tow a vehicle. See the Owner's Manual for more information. ³ Not compatible with all devices. ⁴ Chevrolet Infotainment System functionality varies by model. Full functionality requires compatible Bluetooth and smartphone, and USB connectivity for some devices. ⁵ Map coverage available in the United States, Puerto Rico and Canada. ⁶ Requires active service plan and paid AT&T vehicle data plan or compatible device with 3G/4G LTE tethering data plan. Visit onstar.com for details and limitations. ⁷ The system wirelessly charges one compatible mobile device. Some phones have built-in wireless charging technology and others require a special adaptor/back cover. To check for phone or other device compatibility, visit my.chevrolet.com/learn or consult your carrier.

DIMENSIONS

	REGULAR CAB	DOUBLE CAB	CREW CAB
Length	229.5"	231.7"	231.7"-241.2"
Wheelbase	139.6"	147.5"	147.4"-157.1"
Height	75.6"	75.6"-78.5"	75.4"-78.3"
Width	81.1"	81.2"	81.2"

	REGULAR CAB	DOUBLE CAB	CREW CAB
Head Room (front/rear)	43.1"/-	43.0"/39.9"	43.0"/40.1"
Leg Room (front/rear)	44.5"/-	44.5"/35.2"	44.5"/43.4"
Shoulder Room (front/rear)	66.1"/-	66.0"/64.9"	66.0"/65.2"
Hip Room (front/rear)	60.9"/-	61.2"/60.2"	61.2"/60.2"

MAXIMUM CAPACITIES

	REGULAR CAB	DOUBLE CAB	CREW CAB
Fuel tank (approximate)	28 gallons	24 gallons	24 gallons
	-	22 gallons (2WD Diesel)	22 gallons (2WD Diesel)

Cargo volume ¹	89.1 cubic feet (Long Bed)
	71.7 cubic feet (Standard Bed)
	62.9 cubic feet (Short Bed)



CHEVROLET

MY REWARDS

Enroll. It's quick, it's easy and there is no cost to join. You will automatically receive points just for enrolling.² To enroll, visit mychevroletrewards.com.

Earn. Earn points on eligible new vehicle leases or purchases, which can be redeemed toward accessories,³ vehicle service and more. Plus, get points for paid service,⁴ select OnStar[®] and Connected Services plans,⁵ and many others.

Enjoy. Use points toward eligible accessories,³ paid service, eligible new vehicles⁶ and more. It's our way of saying thanks!



CHEVROLET

COMPLETE CARE

First oil change is covered! Experience Chevrolet Complete Care, a comprehensive coverage, limited warranty and protection program that comes standard with every new 2021 Chevrolet Silverado lease and purchase.

Simply, it is designed around you, to make it easy to help keep your Chevrolet like new – and give you the confidence you deserve. For more information, visit chevrolet.com/complete-care.

NEW VEHICLE LIMITED WARRANTY

Chevrolet will warrant each 2021 Silverado with:

3-year/36,000-mile⁸ Bumper-to-Bumper Limited Warranty.

6 years/100,000 miles⁹ of Rust-Through Protection.

5-year/60,000-mile⁸ Powertrain Limited Warranty.

5-year/100,000-mile⁸ Diesel Limited Warranty (when equipped with a Duramax 3.0L Turbo-Diesel I-6 engine).

5 years/60,000 miles⁸ of Roadside Assistance⁹ and Courtesy Transportation.

¹ Cargo and load capacity limited by weight and distribution. ² Must be 18 years or older. Points may be earned and redeemed only at participating GM entities, dealers or third party retailers in the United States (excluding Puerto Rico, the U.S. Virgin Islands or Guam). Points are not earned on taxes or certain fees, and expire 5 years from when points are earned. Some restrictions apply. For more information, please view full program Terms & Conditions. ³ Members may use the voucher on eligible Chevrolet, Buick, GMC and Cadillac Accessories purchased through a participating dealership. Voucher must be used by expiration date noted. Any unused amount of the voucher will be forfeited. ⁴ Excludes taxes, fees and body shop repair orders. It could take up to 15 days for points to post to your account. ⁵ Connected vehicle services vary by vehicle model and require working electrical system, cell reception and GPS signal. Requires active service plan. OnStar links to emergency services. Visit onstar.com for details and limitations. ⁶ Not compatible with some other offers, including the GM Employee Discount programs. Excludes 2020 Chevrolet Corvette. Dealer contribution may affect final consumer cost. ⁷ Maintenance visit must occur within first year of vehicle delivery. Service visit consists of ACDelco dexos1™ Full Synthetic Oil and Filter Change/Tire Rotation/MPVI. Does not include air filters. See participating dealer for other restrictions and complete details. ⁸ Whichever comes first. See dealer for details. ⁹ Roadside service provided by Allstate Roadside Services. Limitations apply.

IMPORTANT INFORMATION

Chevrolet Owner Center (my.chevrolet.com). Everything you need to know. Anything you need to do. Your Chevrolet Owner Center makes it easy. Create your account today to get the most out of your new vehicle. Get special alerts and offers, schedule service, review your maintenance schedule, and view how-to videos specifically for your vehicle. All online, anytime. Visit the Owner Center today to register or take a tour.

Engines. Chevrolet products are equipped with engines produced by GM Global Propulsion Systems or other suppliers to GM worldwide. The engines in Chevrolet products may also be used in other GM makes and models.

Assembly. Chevrolet vehicles and their components are assembled or produced by different operating units of General Motors, its subsidiaries or suppliers to GM worldwide. We sometimes find it necessary to produce Chevrolet vehicles with different or differently sourced components than originally scheduled. Since some options may be unavailable when your vehicle is assembled, we suggest you verify that your vehicle includes the equipment you ordered and that, if there were changes, they are acceptable to you.

Chevrolet Connected Services and OnStar. Connected vehicle services vary by vehicle model and require an active service plan, working electrical system, cell reception and GPS signal. OnStar links to emergency services. Visit onstar.com for details and limitations.

A note on child safety. Always use seat belts and the correct child restraint for your child's age and size, even with airbags. Even in vehicles equipped with the Passenger Sensing System, children are safer when properly secured in a rear seat in the appropriate infant, child or booster seat. Never place a rear-facing infant restraint in the front seat of any vehicle equipped with an active frontal airbag. See your vehicle Owner's Manual and the child safety seat instructions for more safety information.

Important words about this catalog. We have tried to make this catalog comprehensive and factual. We reserve the right, however, to make changes at any time, without notice, in prices, colors, materials, equipment, specifications, models and availability. Specifications, dimensions, measurements, ratings and other numbers in this catalog

and other printed materials provided at the dealership or affixed to vehicles are approximations based on design and engineering drawings, prototypes and laboratory tests. Your vehicle may differ due to variations in manufacture and equipment. Since some information may have been updated since the time of printing, please check with your Chevrolet dealer for complete details. Chevrolet reserves the right to lengthen or shorten the model year for any product for any reason or to start and end model years at different times. Certain vehicle features may lose their usefulness over time due to obsolescence from technological changes. Unless otherwise noted, all claims based on GM Large Pickup segment and latest available competitive information. Excludes other GM vehicles.

Fleet orders. Some standard content may be deleted on fleet orders. See dealer for details.

Chevrolet ownership experience. Chevrolet is committed to enhancing the vehicle shopping and ownership experience through a wide array of programs. Visit chevrolet.com to build and price, find a vehicle, request a quote, compare vehicles, find financial tools or track your vehicle order. You'll also find information about 24-hour Roadside Assistance, Courtesy Transportation, Customer Assistance, GM Mobility, safety and current incentives.

Chevrolet.com/safety. Chevrolet is committed to helping keep you and your family safe – from the start of your journey to your destination. That's why Chevrolet vehicles offer standard and available safety and security features to help give you peace of mind.

GMmobility.com (1-800-323-9935). GM MobilitySM offers financial assistance for eligible adaptive equipment to make automotive travel easier for persons with disabilities or special transportation needs. To learn more about special GM Mobility offers, visit gmmobility.com.

The BuyPower Card. The Chevrolet BuyPower Card – Every purchase you make with the BuyPower Card from Capital One* helps you earn toward an eligible new Chevrolet, Buick, GMC or Cadillac vehicle. There's no limit on the amount you can earn or redeem, and your Earnings don't expire. Visit chevroletbuypowercard.com/catalogs.

* Capital One, N.A. is the issuer of the BuyPower Card. General Motors ("GM") is responsible for the operation and administration of the Earnings program.



GM, the GM logo, Chevrolet, the Chevrolet logo, and the slogans, emblems, vehicle model names, vehicle body designs and other marks appearing in this catalog are the trademarks and/or service marks of General Motors, its subsidiaries, affiliates or licensors. ©2020 OnStar LLC. All rights reserved. Sirius, XM, SiriusXM and all related marks and logos are trademarks of Sirius XM Radio Inc. The Bluetooth word mark is a registered trademark owned by Bluetooth SIG, Inc., and any use of such mark by Chevrolet is under license. Bose is a registered trademark and Richbass is a trademark of the Bose Corp. Goodyear, Wrangler and Wrangler DuraTrac are registered trademarks of the Goodyear Tire & Rubber Company.

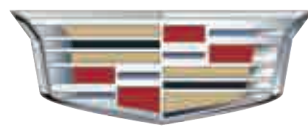
©2020 General Motors. All rights reserved. December 2020

FIND NEW ROADS™

CHEVROLET.COM



MURRAY



Cadillac

403.527.1141

WWW.MURRAYCHEV.CA

**1270 TRANS CANADA WAY SE
MEDICINE HAT, AB - T1B 1J5**