



2022
MALIBU

The street is its stage.

While you'll be drawn in by the sophisticated appearance of the sculpted Malibu LT, the street-inspired attitude of RS and the luxurious highlights of Premier, that's only the beginning of the story.

The second act features a distinctive blend of refined comfort, remarkable driving dynamics and thoughtful interior amenities. The performance concludes in the only way possible: with the 2022 Malibu center stage, treating every drive like a moment in the spotlight.



Malibu Premier in Dark Ash Metallic.

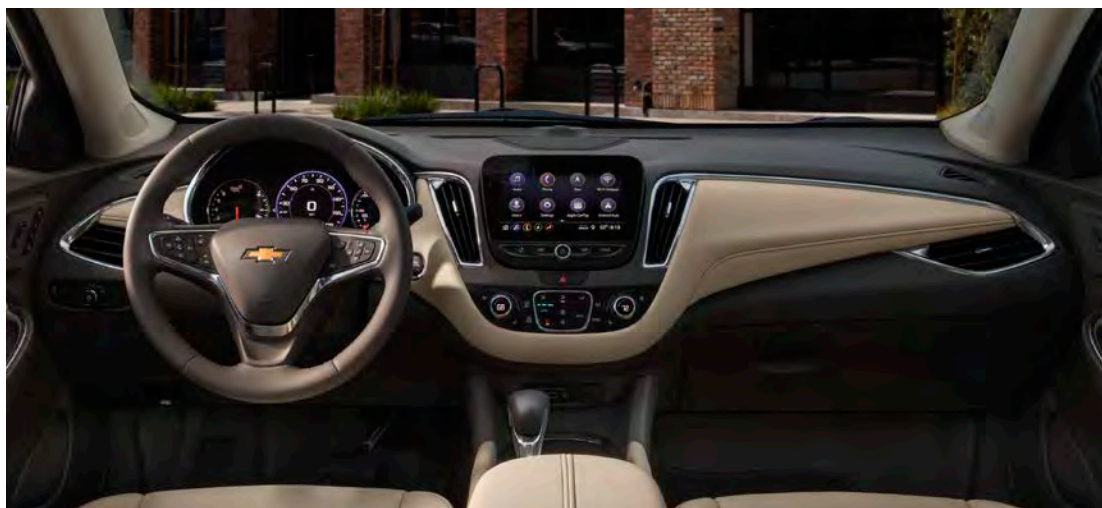
INTRODUCING MALIBU

Malibu at a glance.

- Expressive styling, inside and out
- Spirited performance and driving dynamics
- 1.5L turbocharged engine offers an EPA-estimated 29 MPG city/36 highway
- Four available models
- Sport Edition, Redline Edition and Midnight Edition available on Malibu LT
- Seating for up to five
- Wireless Apple CarPlay^{®1} and wireless Android Auto^{™2} compatibility
- Available built-in Wi-Fi[®] Hotspot³
- Numerous available driver assistance features, including Following Distance Indicator,⁴ Front Pedestrian Braking⁴ and Automatic Parking Assist⁴



Available Automatic Parking Assist⁴



Malibu Premier interior in Light Wheat with Dark Atmosphere accents.

¹ Vehicle user interface is a product of Apple and its terms and privacy statements apply. Requires compatible iPhone and data plan rates apply. ² Vehicle user interface is a product of Google and its terms and privacy statements apply. Requires the Android Auto app on Google Play and a compatible Android smartphone. Data plan rates apply. You can check which smartphones are compatible at g.co/androidauto/requirements. ³ Service varies with conditions and location. Requires active service and paid AT&T data plan. Visit onstar.com for details and limitations. ⁴ Read the vehicle Owner's Manual for important feature limitations and information.

Apple CarPlay, iPhone, Siri and Apple Music are trademarks of Apple Inc., registered in the U.S. and other countries. Android, Google Play and Android Auto are trademarks of Google LLC.

MODELS

Four models to choose from.

No matter which Malibu you choose, the style is accompanied by plenty of substance.



LS

LS presents a sophisticated introduction to the Malibu lineup.

- 1.5L turbocharged 4-cylinder engine
- Outside power-adjustable mirrors with Black caps
- Keyless Open and Start
- 16-inch aluminum wheels
- Chevrolet Infotainment 3 system¹ with 8-inch diagonal color touch-screen display
- 6-speaker sound system
- Bluetooth® audio streaming²
- USB ports,³ one Type-A and one Type-C
- Steering wheel-mounted controls for audio, phone and cruise
- Tilt and telescopic steering column



RS

With looks that won't be ignored, RS stands ready to own the road.

- Black Chevrolet bowtie emblems and Black Malibu and Red RS badging
- Chrome grille surround with Black grille inserts
- Exclusive 18-inch aluminum wheels
- Dual exhaust outlets
- Rear spoiler
- Outside power-adjustable mirrors with body-color caps
- Leather-wrapped steering wheel
- 8-way power driver seat with power lumbar control
- Rear-seat armrest with cup holders



LT

Take a step forward in exterior style and interior comfort in Malibu LT.

- LED daytime running lamps and taillamps
- Outside heated power-adjustable mirrors with body-color caps
- 17-inch aluminum wheels
- Remote vehicle starter system
- Heated cloth front seats
- SiriusXM® 3-month trial subscription⁴
- Dual-zone automatic climate control
- Power windows with driver express-up/-down

Midnight Edition available
Redline Edition available
Sport Edition available



Premier

Prepare to experience the best of Malibu in Premier.

- 2.0L turbocharged engine and 9-speed automatic transmission
- Chrome door handles with body-color inserts
- Bright sill plates
- LED headlamps
- 19-inch aluminum wheels
- Leather-appointed seating
- Heated and ventilated front seats
- Heated rear outboard seats
- Bose premium 9-speaker audio system
- Chevrolet Infotainment 3 Plus system¹ with Navigation⁵
- Heated steering wheel
- Dual-panel power sunroof

¹ Chevrolet Infotainment System functionality varies by model. Full functionality requires compatible Bluetooth and smartphone, and USB connectivity for some devices. ² Go to my.chevrolet.com/learnAbout/bluetooth to find out which phones are compatible with the vehicle. Full Bluetooth feature functionality varies by device, model and software version. ³ Not compatible with all devices. ⁴ If you decide to continue service after your trial, your selected subscription plan will automatically renew thereafter. You will be charged at then-current rates. Fees and taxes apply. To cancel you must call SiriusXM at 1-866-635-2349. See SiriusXM Customer Agreement for complete terms at siriusxm.com. All fees and programming subject to change. ⁵ Map coverage available in the United States, Puerto Rico and Canada.

LS EXTERIOR COLORS



Summit White



Silver Ice Metallic



Dark Ash Metallic



Mineral Gray Metallic



Mosaic Black Metallic

LS FEATURES



Select standard features:

MECHANICAL

Engine – 1.5L turbocharged DOHC 4-cylinder with Variable Valve Timing (VVT), Direct Injection and Automatic Stop/Start

Transmission – Continuously Variable Transmission (CVT)

EXTERIOR

Headlamps – halogen, automatic on/off with automatic delay

Mirrors – power-adjustable, manual-folding with Black caps

INTERIOR

Air conditioning – manual, single-zone

Cruise control – electronic with Set and Resume Speed

Door locks – power programmable with lockout protection and manual rear door child security

Entertainment – Chevrolet Infotainment 3 system¹ with 8-inch diagonal color touch-screen

Keyless Open and Start – includes extended-range Remote Keyless Entry and panic feature

Media – USB ports²; one Type-A and one Type-C, and auxiliary input jack in front center stack storage area

Seats – driver and front passenger 6-way manual adjusters

Steering column – manual tilt and telescopic

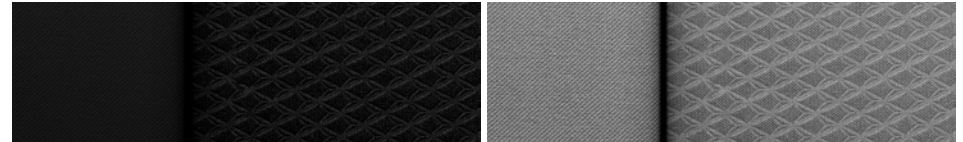
Steering wheel – 3-spoke with mounted audio, cruise and phone controls

Theft-deterrent system – unauthorized entry

Windows – power with express-down, all windows



Jet Black Premium Cloth (shown)



Medium Ash Gray Premium Cloth



16" Aluminum Wheels
Standard on LS

¹ Chevrolet Infotainment System functionality varies by model. Full functionality requires compatible Bluetooth and smartphone, and USB connectivity for some devices. ² Not compatible with all devices.

RS EXTERIOR COLORS



Summit White



Silver Ice Metallic



Dark Ash Metallic



Mineral Gray Metallic



Cherry Red Tintcoat¹



Mosaic Black Metallic

¹Extra-cost color.

RS FEATURES



Select standard features:

MECHANICAL

Engine – 1.5L turbocharged DOHC 4-cylinder with Variable Valve Timing (VVT), Direct Injection and Automatic Stop/Start

Exhaust – dual-outlet with polished tips

Transmission – Continuously Variable Transmission (CVT)

EXTERIOR

Emblems – Black Chevrolet bowtie, front and rear; Black Malibu and Red RS badging

Grille – Black inserts and chrome surround

Mirrors – power-adjustable, manual-folding with body-color caps

Spoiler – rear

INTERIOR

Air conditioning – manual, single-zone

Cruise control – electronic with Set and Resume Speed

Door locks – power programmable with lockout protection and manual rear door child security

Entertainment – Chevrolet Infotainment 3 system¹ with 8-inch diagonal color touch-screen

Keyless Open and Start – includes extended-range Remote Keyless Entry and panic feature

Seat – driver 8-way power adjuster with power lumbar control

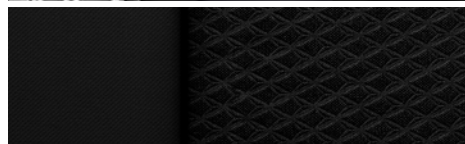
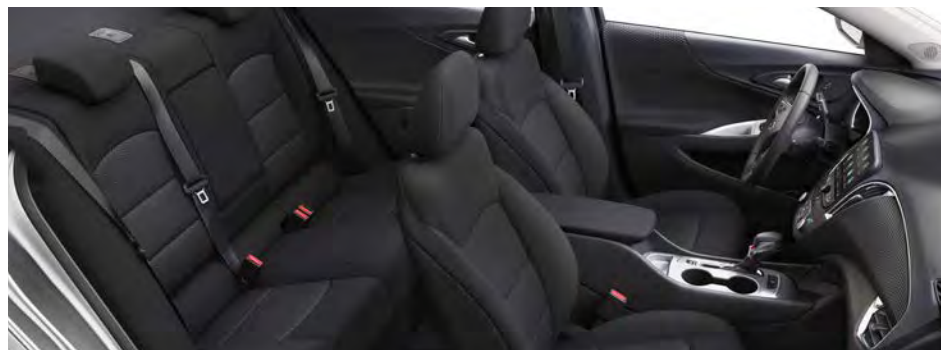
Shift knob – leather-wrapped

Steering column – manual tilt and telescopic

Steering wheel – leather-wrapped, 3-spoke with mounted audio, cruise and phone controls

Theft-deterrent system – unauthorized entry

Windows – power with express-down, all windows



Jet Black Premium Cloth



18" Aluminum Wheels
Standard on RS

¹ Chevrolet Infotainment System functionality varies by model. Full functionality requires compatible Bluetooth and smartphone, and USB connectivity for some devices.

LT EXTERIOR COLORS



Summit White



Silver Ice Metallic



Dark Ash Metallic



Mineral Gray Metallic



Cherry Red Tintcoat¹



Northsky Blue Metallic



Mosaic Black Metallic

¹Extra-cost color.

LT FEATURES



Select standard features:

MECHANICAL

Engine – 1.5L turbocharged DOHC 4-cylinder with Variable Valve Timing (VVT), Direct Injection and Automatic Stop/Start

Transmission – Continuously Variable Transmission (CVT)

EXTERIOR

Mirrors – heated, power-adjustable, manual-folding with body-color caps

Taillamps – LED

INTERIOR

Air conditioning – automatic, dual-zone with individual climate settings for driver and front passenger

Cruise control – electronic with Set and Resume Speed

Door locks – power programmable with lockout protection and manual rear door child security

Entertainment – Chevrolet Infotainment 3 system¹ with 8-inch diagonal color touch-screen

Keyless Open and Start – includes extended-range Remote Keyless Entry and panic feature

Remote vehicle starter system

Seat – driver 8-way power adjuster with power lumbar control

Seats – heated driver and front passenger

SiriusXM^{®2} – 3-month trial subscription

Steering column – manual tilt and telescopic

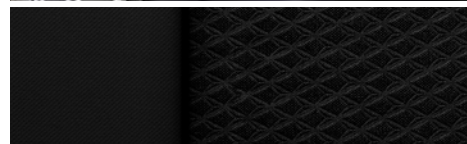
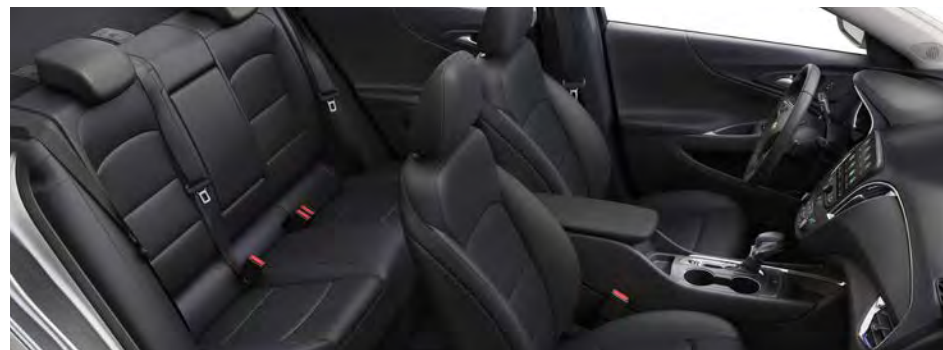
Steering wheel – 3-spoke with mounted audio, cruise and phone controls

Theft-deterrent system – unauthorized entry

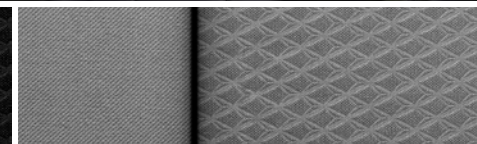
Vents – rear console

Windows – power with driver express-up/-down, all others express-down

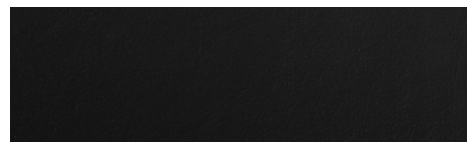
¹ Chevrolet Infotainment System functionality varies by model. Full functionality requires compatible Bluetooth and smartphone, and USB connectivity for some devices. ² If you decide to continue service after your trial, your selected subscription plan will automatically renew thereafter. You will be charged at then-current rates. Fees and taxes apply. To cancel you must call SiriusXM at 1-866-635-2349. See SiriusXM Customer Agreement for complete terms at siriusxm.com. All fees and programming subject to change. ³ Requires available Leather Package.



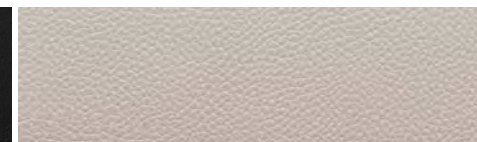
Jet Black Premium Cloth



Medium Ash Gray Premium Cloth



Jet Black Leather-Appointed Seating Surfaces³ (shown)



Light Wheat Leather-Appointed Seating Surfaces³



17" Aluminum Wheels
Standard on LT



16" Aluminum Wheels
Available on LT



18" Bright Machined-Aluminum Wheels
with Lunar Gray Pockets
Available on LT



19" Black-Painted Aluminum Wheels
with Red Accents
Available on LT with Redline Edition



19" Black-Painted Aluminum Wheels
Available on LT with Midnight Edition
or Sport Edition



19" Aluminum Wheels
Available on LT

PREMIER EXTERIOR COLORS



Summit White



Silver Ice Metallic



Dark Ash Metallic



Mineral Gray Metallic



Cherry Red Tintcoat¹



Northsky Blue Metallic



Mosaic Black Metallic

¹Extra-cost color.

PREMIER FEATURES



Select standard features:

MECHANICAL

Engine – 2.0L turbocharged DOHC 4-cylinder with Variable Valve Timing (VVT) and Direct Injection

Exhaust – dual-outlet with polished tips

Transmission – 9-speed automatic with overdrive

EXTERIOR

Headlamps – LED, automatic on/off with automatic delay

Mirrors – heated, power-adjustable, manual-folding with body-color caps and integrated turn signal indicators

INTERIOR

Air conditioning – automatic, dual-zone with individual climate settings for driver and front passenger

Entertainment – Chevrolet Infotainment 3 Plus system¹ with Navigation²

Keyless Open and Start – includes extended-range Remote Keyless Entry and panic feature

Memory settings – recalls two presets for 8-way power driver seat and outside rearview mirrors

Remote vehicle starter system

Seat – driver 8-way power adjuster with power lumbar control
– front passenger 6-way power adjuster with power lumbar control

Seats – heated and ventilated front seats; heated rear outboard seating positions

SiriusXM^{®3} – 3-month trial subscription

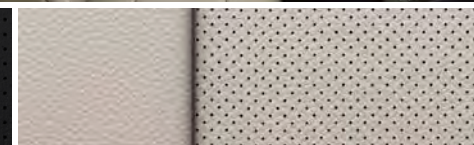
Steering wheel – heated, leather-wrapped, 3-spoke with mounted audio, cruise and phone controls

Sunroof – panoramic power, dual-panel with power sunshade

Windows – power with driver express-up/-down, all others express-down



Jet Black Perforated Leather-Appointed Seating Surfaces



Light Wheat Perforated Leather-Appointed Seating Surfaces (shown)



19" Aluminum Wheels
Standard on Premier

¹ Chevrolet Infotainment System functionality varies by model. Full functionality requires compatible Bluetooth and smartphone, and USB connectivity for some devices. ² Map coverage available in the United States, Puerto Rico and Canada. ³ If you decide to continue service after your trial, your selected subscription plan will automatically renew thereafter. You will be charged at then-current rates. Fees and taxes apply. To cancel you must call SiriusXM at 1-866-635-2349. See SiriusXM Customer Agreement for complete terms at siriusxm.com. All fees and programming subject to change.

SPECIFICATIONS

● STANDARD ○ AVAILABLE – NOT AVAILABLE

	LS	RS	LT	PREMIER
SAFETY AND DRIVER ASSISTANCE				
Airbags ¹ – frontal and knee airbags for driver and front passenger; seat-mounted side-impact airbags and head-curtain airbags for front and rear outboard seating positions; includes Passenger Sensing System for passenger-side frontal and knee airbags	●	●	●	●
Automatic Emergency Braking ² (requires available Driver Confidence I & II Package)	○	○	○	–
Enhanced Automatic Emergency Braking ² (requires available Enhanced Driver Confidence Package)	–	–	–	○
Following Distance Indicator ² (requires available Driver Confidence I & II Package on LS, RS and LT; requires available Enhanced Driver Confidence Package on Premier)	○	○	○	○
Forward Collision Alert ² (requires available Driver Confidence I & II Package on LS, RS and LT; requires available Enhanced Driver Confidence Package on Premier)	○	○	○	○
Front Pedestrian Braking ² (requires available Driver Confidence I & II Package on LS, RS and LT; requires available Enhanced Driver Confidence Package on Premier)	○	○	○	○
Lane Change Alert with Side Blind Zone Alert ² (requires available Driver Confidence I Cloth Package or Driver Confidence I & II Package on LS, RS and LT; requires available Enhanced Driver Confidence Package on Premier)	○	○	○	○
Lane Keep Assist with Lane Departure Warning ² (requires available Driver Confidence I & II Package on LS, RS and LT; requires available Enhanced Driver Confidence Package on Premier)	○	○	○	○
LATCH system (Lower Anchors and Tethers for Children) – for child restraint systems	●	●	●	●
Rear Cross Traffic Alert ² (requires available Driver Confidence I Cloth Package or Driver Confidence I & II Package on LS, RS and LT; requires available Enhanced Driver Confidence Package on Premier)	○	○	○	○
Rear Park Assist ² (requires available Driver Confidence I Cloth Package or Driver Confidence I & II Package)	○	○	○	–
Automatic Parking Assist ² (requires available Enhanced Driver Confidence Package)	–	–	–	○
Rear Vision Camera ²	●	●	●	–
HD Rear Vision Camera ²	–	–	–	●
Teen Driver technology	●	●	●	●
Theft-deterrent system – unauthorized entry	●	●	●	●
Tire Pressure Monitoring System (does not monitor spare tire, if equipped)	●	●	●	●
Up to 3 months of OnStar® Safety & Security coverage ³	●	●	●	●

	LS	RS	LT	PREMIER
MECHANICAL				
Brakes – 4-wheel antilock, 4-wheel disc with Duralife® rotors; electronic parking brake	●	●	●	●
Engine – 1.5L turbocharged DOHC 4-cylinder with Variable Valve Timing (VVT) and Direct Injection; 163 hp @ 5700 rpm, 184 lb.-ft. of torque @ 2500–3000 rpm	●	●	●	–
– 2.0L turbocharged DOHC 4-cylinder with Variable Valve Timing (VVT) and Direct Injection; 250 hp @ 5300 rpm, 260 lb.-ft. of torque @ 2000–5000 rpm	–	–	–	●
– Automatic Stop/Start	●	●	●	–
Exhaust – aluminized stainless steel	●	●	●	●
– single-outlet	●	–	–	–
– dual-outlet with polished tips	–	●	–	●
StabiliTrak® – Electronic Stability Control System with Traction Control; includes Hill Start Assist	●	●	●	●
Steering – power, electric, rack-and-pinion	●	●	●	●
Suspension – front MacPherson strut	●	●	●	●
– rear 4-link, independent	●	●	●	●
Transmission – Continuously Variable Transmission (CVT)	●	●	●	–
– 9-speed automatic, electronically controlled with overdrive	–	–	–	●

¹ A NOTE ON CHILD SAFETY: Always use seat belts and the correct child restraint for your child's age and size, even with airbags. Even in vehicles equipped with the Passenger Sensing System, children are safer when properly secured in a rear seat in the appropriate infant, child or booster seat. Never place a rear-facing infant restraint in the front seat of any vehicle equipped with an active frontal airbag. See your vehicle Owner's Manual and the child safety seat instructions for more safety information.

² Read the vehicle Owner's Manual for important feature limitations and information. ³ When you select a monthly plan within 30 days of activating your 1-month trial, you'll receive the next 2 months of the plan you select at no additional charge when you associate an approved payment method on file to your account and authorize recurring payments for your service plan. The amount and frequency of each recurring payment is based upon the service(s) and payment interval(s) you select from the options provided. After the trial expires, OnStar will automatically bill your payment method monthly at then-current standard monthly rates. Plans containing 4G LTE data will be billed every 30 days by AT&T. You may cancel at any time by pushing your blue OnStar button or calling 1-888-466-7827. May not be combined with other offers or retroactively applied. Offer subject to change.

SPECIFICATIONS (CONTINUED)

● STANDARD ○ AVAILABLE – NOT AVAILABLE

	LS	RS	LT	PREMIER
EXTERIOR				
Antenna – Black	●	–	–	–
– body-color	–	●	●	●
Daytime running lamps – reduced intensity low beam	●	●	–	–
– LED	–	–	●	●
Door handles – body-color	●	●	●	–
– chrome with body-color inserts	–	–	–	●
Emblems – Black Chevrolet bowtie, front and rear (requires available Midnight Edition, Redline Edition or Sport Edition on LT)	–	●	○	–
– Black Malibu badging (requires available Midnight Edition or Sport Edition on LT)	–	●	○	–
– Black Malibu badging with Red outline (requires available Redline Edition)	–	–	○	–
– Red RS badging	–	●	–	–
Fuel filler – capless fueling	●	●	●	●
Glass – solar-absorbing, acoustic-laminated windshield and front side windows	●	●	●	●
Grille – Black inserts with bright accents and chrome surround	●	–	●	●
– Black inserts and chrome surround	–	●	–	–
– blacked out (requires available Redline Edition)	–	–	○	–
– blacked out and dark chrome surround (requires available Midnight Edition or Sport Edition)	–	–	○	–
Headlamps – halogen	●	●	●	–
– LED	–	–	–	●
– automatic on/off with automatic delay	●	●	●	●
IntelliBeam® – automatic high beam on/off (requires available Driver Confidence I & II Package on LS, RS and LT; requires available Enhanced Driver Confidence Package on Premier)	○	○	○	○
Mirrors – power-adjustable, manual-folding	●	●	–	–
– Black caps (requires available Redline Edition on LT)	●	–	○	–
– body-color caps (requires available Driver Confidence I Cloth Package or Driver Confidence I & II Package on LS)	○	●	●	●
– heated	–	–	●	●
– integrated turn signal indicators	–	–	–	●
Spoiler – rear	–	●	–	–
Taillamps – incandescent	●	●	–	–
– LED	–	–	●	●
Tire – compact spare	●	●	●	–
– tire inflator kit	–	–	–	●
Tires – P205/65R16 all-season (requires available 16" aluminum wheels on LT)	●	–	○	–
– P225/55R17 all-season	–	–	●	–
– P245/45R18 all-season (requires available 18" bright machined-aluminum wheels on LT)	–	●	○	–
– P245/40R19 all-season (requires available Midnight Edition, Sport Edition, Redline Edition or 19" aluminum wheels on LT)	–	–	○	●

	LS	RS	LT	PREMIER
EXTERIOR (CONTINUED)				
Wheels – 16" aluminum	●	–	○	–
– 17" aluminum	–	–	●	–
– 18" aluminum	–	●	–	–
– 18" bright machined-aluminum with Lunar Gray pockets	–	–	○	–
– 19" Black-painted aluminum with Red accents (requires available Redline Edition)	–	–	○	–
– 19" Black-painted aluminum (requires available Midnight Edition or Sport Edition)	–	–	○	–
– 19" aluminum	–	–	○	●
Wipers – front variable-speed, intermittent	●	●	●	●
INTERIOR				
Air conditioning – manual, single-zone	●	●	–	–
– automatic, dual-zone with individual climate settings for driver and front passenger	–	–	–	●
– cabin air filter	●	●	●	●
Armrest – rear-seat center with cup holders	–	●	●	●
Cruise control – electronic with Set and Resume Speed	●	●	●	●
– Adaptive Cruise Control ¹ (requires available Enhanced Driver Confidence Package)	–	–	–	○
Door locks – power programmable with lockout protection and manual rear door child security	●	●	●	●
Driver Information Center – monochromatic display	●	●	●	–
– enhanced 8-inch diagonal reconfigurable multi-color display	–	–	–	●
Floor mats – front and rear, carpeted	●	●	●	●
Lighting – overhead courtesy, dual reading lamps and trunk	●	●	●	●
– rear reading lamps	–	–	●	●
– ambient, instrument panel light pipe, front door pad and front door map pocket light pipe, and door handle release on all doors	–	–	–	●
Keyless Open and Start – includes extended-range Remote Keyless Entry and panic feature	●	●	●	●
Memory settings – recalls two presets for 8-way power driver seat and outside rearview mirrors	–	–	–	●
Mirror – rearview, manual day/night	●	●	●	–
– rearview, auto-dimming (requires available Leather Package on LT)	–	–	○	●
Power outlet – 12-volt auxiliary	●	●	●	●
– 120-volt, on rear of center console	–	–	–	●
Rear Seat Reminder ² notification	●	●	●	●
Remote vehicle starter system	○	○	●	●

¹ Read the vehicle Owner's Manual for important feature limitations and information. ² Does not detect people or items. Always check rear seat before exiting.

SPECIFICATIONS (CONTINUED)

● STANDARD ○ AVAILABLE – NOT AVAILABLE

	LS	RS	LT	PREMIER
INTERIOR (CONTINUED)				
Shift knob – leather-wrapped (requires available Leather Package on LT)	–	●	○	●
Sill plates – front, bright	–	–	–	●
Steering column – manual tilt and telescopic	●	●	●	●
Steering wheel – 3-spoke with mounted audio, cruise and phone controls	●	●	●	●
– leather-wrapped (requires available Leather Package on LT)	–	●	○	●
– heated (requires available Leather Package on LT)	–	–	○	●
Sunroof – panoramic power, dual-panel with power sunshade	–	–	○	●
Temperature display – outside	●	●	●	●
Trunk – cargo anchors	●	●	●	●
– mat	–	–	–	●
Vents – rear console	–	–	●	●
Visors – driver and front passenger, covered vanity mirrors	●	●	–	–
– driver and front passenger, covered illuminated vanity mirrors	–	–	●	●
Windows – power, express-down all windows	●	●	–	–
– driver express-up/-down, all others express-down	–	–	●	●

	LS	RS	LT	PREMIER
SEATING				
Seats – front bucket with seatback map pockets	●	●	●	●
– rear manual-folding 60/40 split-bench	●	●	●	●
Seat – driver 6-way manual adjuster	●	–	–	–
– driver 8-way power adjuster with power lumbar control	–	●	●	●
– front passenger 6-way manual adjuster	●	●	●	–
– front passenger 6-way power adjuster with power lumbar control	–	–	–	●
Heated front seats	–	–	●	●
Heated rear outboard seating positions	–	–	–	●
Ventilated front seats	–	–	–	●
ENTERTAINMENT				
Chevrolet Infotainment 3 system ¹ with 8-inch diagonal color touch-screen, AM/FM stereo, Bluetooth [®] audio streaming ² for two active devices, voice command pass-through to compatible phone, and wireless Apple CarPlay ^{®3} and wireless Android Auto ^{™4} compatibility	●	●	●	–
Chevrolet Infotainment 3 Plus system ¹ with Navigation ⁵ and 8-inch diagonal HD color touch-screen, AM/FM stereo, Bluetooth audio streaming ² for two active devices, voice command pass-through to compatible phone, wireless Apple CarPlay ³ and wireless Android Auto ⁴ compatibility, available Alexa Built-In ⁶ enhanced voice recognition, available In-Vehicle Apps ⁷ and Connected Navigation ⁸	–	–	–	●
Audio – 6-speaker system	●	●	●	–
– 9-speaker Bose premium audio system	–	–	–	●
Media – USB ports ⁹ , one Type-A and one Type-C, and auxiliary input jack in front center stack storage area	●	●	●	●
– USB port ⁹ charge-only, on rear of center console	–	–	–	●
SiriusXM ^{®10} – 3-month trial subscription	–	–	●	●
Available Wi-Fi [®] Hotspot ¹¹ for up to seven devices, includes 1 month of unlimited data	○	○	○	○
Chevrolet Connected Access ¹² with up to 10 years of standard connectivity, which currently enables features such as Vehicle Diagnostics and Dealer Maintenance Notification	●	●	●	●

¹ Chevrolet Infotainment System functionality varies by model. Full functionality requires compatible Bluetooth and smartphone, and USB connectivity for some devices. ² Go to my.chevrolet.com/learnAbout/bluetooth to find out which phones are compatible with the vehicle. Full Bluetooth feature functionality varies by device, model and software version. ³ Vehicle user interface is a product of Apple and its terms and privacy statements apply. Requires compatible iPhone and data plan rates apply. ⁴ Vehicle user interface is a product of Google and its terms and privacy statements apply. Requires the Android Auto app on Google Play and a compatible Android smartphone. Data plan rates apply. You can check which smartphones are compatible at g.co/androidauto/requirements.

⁵ Map coverage available in the United States, Puerto Rico and Canada. ⁶ Functionality is subject to limitations and varies by vehicle, infotainment system and location. Select service plan required. Certain Alexa Skills require account linking to use. Visit onstar.com for additional details. ⁷ Third-party trademarks are the property of their respective third-party owners and used under agreement. Requires active service plan and paid AT&T vehicle data plan. Visit onstar.com for details and limitations. ⁸ Connected Navigation and Real-time Points of Interest (POI) only available on properly equipped vehicles. Requires paid plan or trial. Map coverage available in the United States, Puerto Rico and Canada. Visit onstar.com for details and limitations. ⁹ Not compatible with all devices.

¹⁰ If you decide to continue service after your trial, your selected subscription plan will automatically renew thereafter. You will be charged at then-current rates. Fees and taxes apply. To cancel you must call SiriusXM at 1-866-635-2349. See SiriusXM Customer Agreement for complete terms at siriusxm.com. All fees and programming subject to change. ¹¹ Service varies with conditions and location. Requires active service and paid AT&T data plan. Visit onstar.com for details and limitations. Availability subject to change. ¹² Standard connectivity available only to original purchaser for up to 10 years. Connected Access services are subject to change. Does not include emergency or security services. Diagnostic capabilities vary by model and service plan. Message and data rates may apply. Requires contact method on file and enrollment to receive alerts. Not all issues will deliver alerts. Visit onstar.com for details and limitations.

SPECIFICATIONS (CONTINUED)

● STANDARD ○ AVAILABLE – NOT AVAILABLE



Midnight Edition.



Redline Edition.



Sport Edition.

	LS	RS	LT	PREMIER
PACKAGES AND SPECIAL EDITIONS				
Driver Confidence I Cloth Package	○	○	○	–
Lane Change Alert with Side Blind Zone Alert ¹ ; Rear Cross Traffic Alert ¹ and Rear Park Assist ¹ ; includes body-color mirror caps on LS				
Driver Confidence I & II Package	○	○	○	–
Automatic Emergency Braking ¹ ; Following Distance Indicator ¹ ; Forward Collision Alert ¹ ; Front Pedestrian Braking ¹ ; IntelliBeam, Lane Change Alert with Side Blind Zone Alert ¹ ; Lane Keep Assist with Lane Departure Warning ¹ ; Rear Cross Traffic Alert ¹ and Rear Park Assist ¹ ; includes body-color mirror caps on LS				
Leather Package	–	–	○	–
Leather-appointed seating surfaces, heated leather-wrapped steering wheel, leather-wrapped shift knob and inside rearview auto-dimming mirror				
Midnight Edition	–	–	○	–
19" Black-painted aluminum wheels, P245/40R19 all-season tires, Black Chevrolet bowtie emblems, Black Malibu badge, blacked-out grille with dark chrome surround, leather-wrapped steering wheel and leather-wrapped shift knob (requires Mosaic Black Metallic exterior color and Jet Black interior color)				
Redline Edition	–	–	○	–
19" Black-painted aluminum wheels with Red accents, P245/40R19 all-season tires, Black Chevrolet bowtie emblems, Black Malibu badge with Red outline, blacked-out grille, Black mirror caps with Redline decals, leather-wrapped steering wheel and leather-wrapped shift knob (requires Jet Black interior color; available with Summit White, Silver Ice Metallic or Mosaic Black Metallic exterior colors)				
Sport Edition	–	–	○	–
19" Black-painted aluminum wheels, P245/40R19 all-season tires, Black Chevrolet bowtie emblems, Black Malibu badge, blacked-out grille with dark chrome surround, leather-wrapped steering wheel and leather-wrapped shift knob (requires Jet Black interior color)				
Enhanced Driver Confidence Package	–	–	–	○
Adaptive Cruise Control ¹ ; Automatic Parking Assist ¹ ; Enhanced Automatic Emergency Braking ¹ ; Following Distance Indicator ¹ ; Forward Collision Alert ¹ ; Front Pedestrian Braking ¹ ; IntelliBeam, Lane Change Alert with Side Blind Zone Alert ¹ ; Lane Keep Assist with Lane Departure Warning ¹ and Rear Cross Traffic Alert ¹				

¹ Read the vehicle Owner's Manual for important feature limitations and information.

SPECIFICATIONS (CONTINUED)

MAXIMUM CAPACITIES

Fuel tank (approximate)	15.8 gallons
Passenger volume	102.9 cubic feet
Seating (front/rear)	Seats 2/3
Cargo volume ¹	15.7 cubic feet

DIMENSIONS

Wheelbase	111.4"
Length	194.2"
Height	57.3"

EPA-ESTIMATED FUEL ECONOMY

1.5L turbocharged engine	29 MPG city/36 highway/32 combined
2.0L turbocharged engine	22 MPG city/33 highway/26 combined

Head room (front/rear)	39.1"/37.5"
Leg room (front/rear)	41.5"/38.1"
Shoulder room (front/rear)	58.5"/57.1"
Hip room (front/rear)	54.1"/53.4"

¹ Cargo and load capacity limited by weight and distribution.

ACCESSORIES



Floor Liners available from Chevrolet Accessories.



Black Illuminated Bowtie Emblem available from Chevrolet Accessories.



Cargo Net available from Chevrolet Accessories.



Rear Splash Guards available from Chevrolet Accessories.

IMPORTANT INFORMATION



Every step of the way.

You may be discovering Chevrolet through a personalized online shopping experience or enjoying every year of vehicle ownership. Either way, we're committed to providing the tools and programs you need to help you get the most out of your journey.

› Build & Price

Create your perfect Chevrolet from start to finish.

› Chevy MyWay¹

Engage in a real-time virtual video experience with a Chevy product specialist.

› Chevrolet Complete Care

Enjoy an owner benefit program that provides excellent service and support from day one.

› My Chevrolet Rewards

It's free to join² and you can earn and redeem on almost everything you do with Chevrolet.

› Limited Warranty Coverage

Discover all the ways Chevrolet is committed to providing an excellent ownership experience.



GM, the GM logo, Chevrolet, the Chevrolet logo, and the slogans, emblems, vehicle model names, vehicle body designs and other marks appearing in this brochure are the trademarks and/or service marks of General Motors, its subsidiaries, affiliates or licensors. ©2021 OnStar LLC. All rights reserved. Sirius, XM, SiriusXM and all related marks and logos are trademarks of Sirius XM Radio Inc. Amazon, Alexa and all related marks are trademarks of Amazon.com, Inc. or its affiliates. The Bluetooth word mark is a registered trademark owned by Bluetooth SIG, Inc., and any use of such mark by Chevrolet is under license. Bose is a registered trademark of the Bose Corp.

©2021 General Motors. All rights reserved. July 2021

FIND NEW ROADS™

CHEVROLET.COM

¹ Chevy MyWay is available to anyone over 18 in the United States to access and experience via chevrolet.com/myway. ² Must be 18 years or older. Points may be earned and redeemed only at participating GM entities, dealers or third party retailers in the United States (excluding Puerto Rico, the U.S. Virgin Islands or Guam). Points are not earned on taxes or certain fees, and expire 5 years from when points are earned. Some restrictions apply. For more information, please view full program Terms & Conditions.



403.527.1141

MURRAYCHEV.CA • CADILLACMEDHAT.CA

**1270 TRANS CANADA WAY SE
MEDICINE HAT, AB • T1B 1J5**