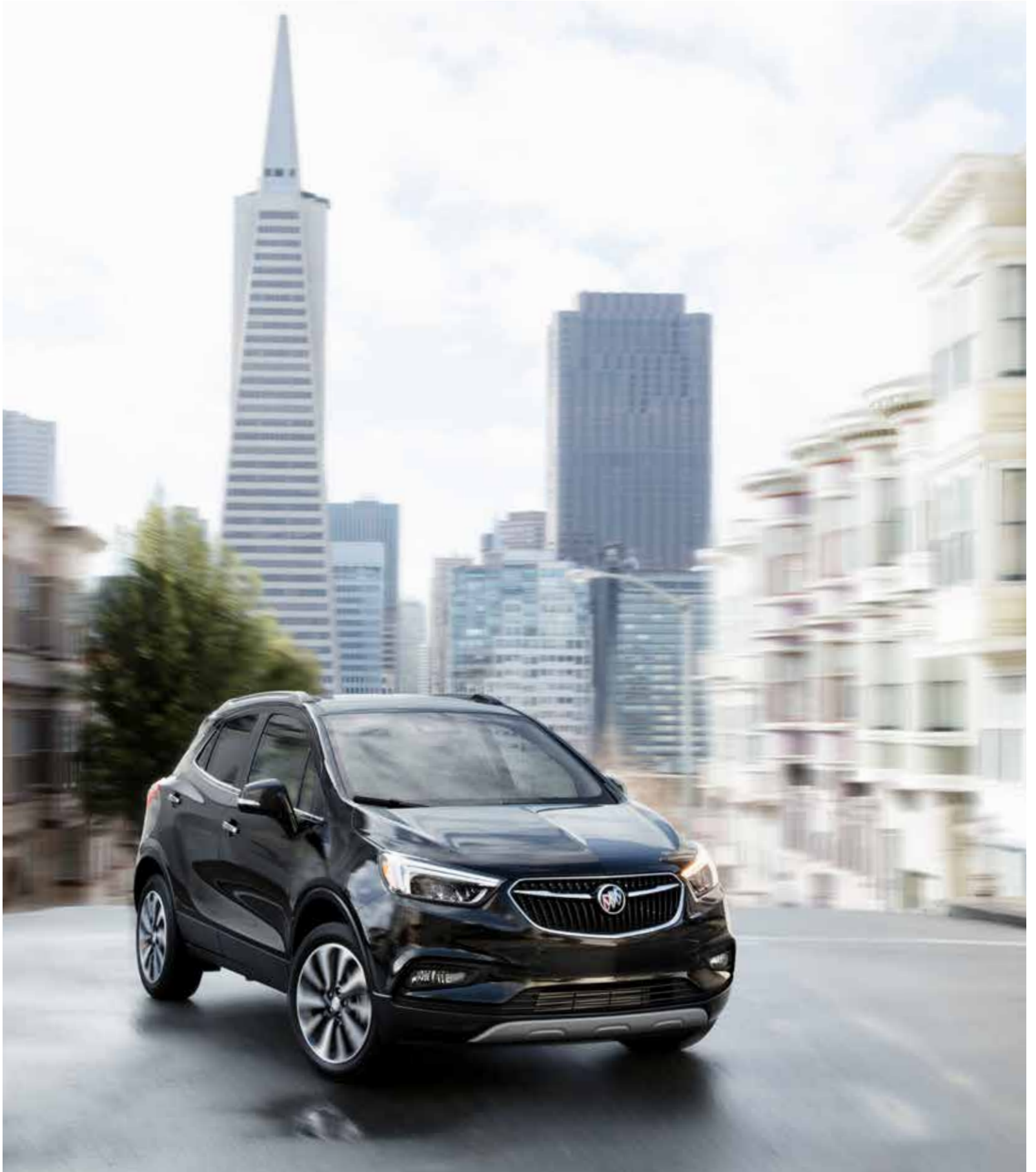




2019 BUICK **ENCORE**



Encore Essence shown in Ebony Twilight Metallic with available features.





## WHERE LIFE MEETS STYLE

With its nimble manoeuvrability and turbocharged engine, Encore empowers you to carve your own path. With spacious storage and flexible seating for up to five, Encore gives you what you need to make life look effortless. But what truly distinguishes Encore is a contemporary interior that's complemented with modern technology.

# STYLED TO STAND OUT

Even with the elevated seating position of an SUV, Encore's athletic stance lets you take command of the road to help you feel ready for whatever comes your way. You'll know it's a Buick the instant you catch a glimpse of the signature LED daytime running lamps and winged signature grille. Unique wheels are offered on each trim level.





Encore Essence shown in White Frost Tricoat with available features.



Encore Essence shown in Winterberry Red Metallic with available features.





## AN SUV THAT KNOWS WHAT THE 'S' STANDS FOR

Encore delivers sporty performance with a standard 1.4L turbocharged engine, agile handling and available All-Wheel Drive. The turbo engine gives you power, serving up 138 hp and 148 lb.-ft. of torque. It's efficient, too, with a GM-estimated fuel consumption of 9.4 L/100 km city/7.8 L/100 km hwy (FWD).<sup>1</sup> Encore's nimble manoeuvrability and tight turning radius help you navigate city streets, crowded freeways or winding back roads confidently.

**ALL-WHEEL DRIVE** To optimize traction, available intelligent All-Wheel Drive is designed to monitor all four wheels and transfer power among wheels when needed.

**STABILITRAK** To help you stay confidently in command of the road ahead, the StabiliTrak stability control system is engineered to apply quick, precise force to the brakes when it senses a difference between the direction of the wheels and the steering wheel.

<sup>1</sup>Estimated fuel-consumption ratings based on GM testing in accordance with Government of Canada approved test methods. Refer to [vehicles.nrcan.gc.ca](http://vehicles.nrcan.gc.ca) for details. Your actual fuel consumption may vary.



## DISCOVER WHAT PREMIUM FEELS LIKE

The moment you enter the Encore, you'll feel instantly at ease. Sweeping surfaces and spacious seating give the feeling of an airy, welcoming environment—a feeling that's enhanced when you settle into the available leather-appointed seating and discover all of the modern amenities that surround you.

**WARM WELCOME** Opt for the available heated steering wheel and available heated driver and front-passenger seats for soothing warmth on those brisk morning drives.





Encore Essence interior shown in Ebony with Ebony accents and available features.

**8-INCH DIAGONAL COLOUR TOUCH-SCREEN** Make hands-free calls, access your favourite SiriusXM<sup>1</sup> Radio stations during your 3-month trial and after that with a paid subscription and more via the Buick Infotainment System.<sup>2</sup> Plus, get directions and up-to-date traffic information with available built-in Navigation.<sup>3</sup>

**BOSE® PREMIUM AUDIO** Discover what premium sounds like with Encore's available seven-speaker Bose premium audio system with amplifier and HD Radio.

**IN-VEHICLE AIR IONIZER** An available ionizer helps enhance air quality inside Encore's cabin, while available dual-zone climate controls provide a comfortable driving experience for front passengers.

<sup>1</sup>Available in 10 Canadian provinces, three territories and the 48 contiguous United States. Subscription sold separately after trial period. If you decide to continue your service at the end of your trial subscription, the plan you choose will automatically renew and bill at then-current rates until you call 1-888-539-7474 to cancel. Other fees and taxes will apply. All fees and programming subject to change. See the Customer Agreement for complete terms at [siriusxm.ca/terms](http://siriusxm.ca/terms). <sup>2</sup>Full functionality requires compatible Bluetooth® and smartphone, and USB connectivity for some devices. Data plan rates apply. <sup>3</sup>At time of printing, detailed map coverage is available for most major urban areas of the United States and for certain metropolitan areas of Canada (Vancouver, Calgary, Edmonton, Winnipeg, Windsor, London, Toronto, Ottawa, Montreal, Quebec City and Halifax). Coverage is significantly limited outside these areas.

Encore Essence interior shown in Shale with Ebony accents and available features.





# ATTENTION TO DETAIL, DETAIL, DETAIL

## **QUIETTUNING™ TECHNOLOGY**

QuietTuning technology with Active Noise Cancellation uses triple door seals, acoustic laminated glass in the windshield and front side windows, specific suspension tuning and other measures to help reduce, block and absorb unwanted noise. So you can enjoy conversations with your passengers or quiet time for yourself or fully appreciate the sound from the available Bose® premium audio system with seven speakers, amplifier and HD Radio.

**POWER SUNROOF** Treat your passengers to expansive views of the sky with the available power sunroof.

**KEYLESS OPEN AND START** Never fumble for your keys again. With keyless entry, the driver's door unlocks when the keyless fob is in your pocket or purse.



Encore Essence shown in Ebony Twilight Metallic with available features.





# BECAUSE LIFE COMES IN ALL SHAPES AND SIZES

Encore gives you roomy seating for up to five. And thanks to its 60/40 split rear seats and fold-flat front-passenger seat, it also offers you the versatility to carry various combinations of passengers and cargo. So whether you need to seat your friends in surprisingly spacious luxury or load your belongings into the cargo area, Encore easily adapts.

**FLEXIBLE CARGO SPACE** The 60/40 split rear seats fold flat to create up to 1370.7 litres (48.4 cu. ft.) of cargo volume.<sup>1</sup> Need to store your smaller valuables? There's an available cargo pullout under the front-passenger seat.

**SECURITY COVER** To help protect your possessions, you can cover your cargo area with the standard cargo shade.

**EXTRA-LONG CAPACITY** Need to carry something extra long, like that rug you just picked up for the patio? The front-passenger seat folds flat to accommodate items up to 2.4 metres (8 ft.) long.<sup>1</sup>

<sup>1</sup>Cargo and load capacity limited by weight and distribution. All cargo should be properly secured and stowed.







Encore Essence shown in Ebony Twilight Metallic with available features.

# SAFETY FIRST

Encore helps you stay safe with 10 standard airbags<sup>1</sup> and a suite of available advanced safety technologies.

**REAR VISION CAMERA** To help you better navigate while backing up, the standard Rear Vision Camera shows you grid lines and live images of what's behind you on the 8-inch diagonal infotainment screen.

**FRONT AND REAR PARK ASSIST** When driving at speeds less than 8 km/h, this available system provides distance-to-object alerts to help you park and avoid colliding with nearby detected objects directly ahead of or behind the vehicle during low-speed manoeuvring.

**REAR CROSS TRAFFIC ALERT** When in Reverse, available Rear Cross Traffic Alert provides alerts to help you avoid approaching detected left or right cross traffic, such as when you're backing out of your driveway or a crowded parking space.

**SIDE BLIND ZONE ALERT<sup>2</sup>** This available system can provide side-mirror alerts to help you avoid moving vehicles detected in your side blind zone during a lane-change manoeuvre.

**LANE DEPARTURE WARNING** This available system can provide alerts to help you avoid crashes due to unintentionally drifting out of your lane when your turn signal is not activated.

**FORWARD COLLISION ALERT** If this available system detects that a front-end collision situation is imminent while following a detected vehicle, the system alerts you to a potential crash. It also alerts you if you are following a detected vehicle much too closely.

Safety or driver assistance features are no substitute for the driver's responsibility to operate the vehicle in a safe manner. The driver should remain attentive to traffic, surroundings and road conditions at all times. Visibility, weather and road conditions may affect feature performance. Read the vehicle Owner's Manual for more important feature limitations and information.

<sup>1</sup>Always use seat belts and the correct restraint for your child's age and size. Even in vehicles equipped with the Passenger Sensing System, children are safer when properly secured in a rear seat in the appropriate infant, child or booster seat. Never place a rear-facing infant restraint in the front seat of any vehicle equipped with a passenger airbag. See the Owner's Manual and child safety seat instructions for more safety information. <sup>2</sup>Before making a lane change, always check the exterior and interior rear-view mirrors, look over your shoulder for vehicles and hazards and start the turn signal.





Encore Essence shown in Ebony Twilight Metallic with available features.

# TECHNOLOGY THAT KEEPS YOU CONNECTED

Encore helps keep you seamlessly connected and entertained with its suite of available built-in technologies.

**NEW BUICK CONNECTED SERVICES** With a range of available plans, Buick Connected Services seamlessly links your digital life to your vehicle. Starting with Connected Access,<sup>1</sup> you'll get standard connectivity that enables services in your vehicle including Vehicle Diagnostics<sup>2</sup> and Dealer Maintenance Notifications,<sup>2</sup> to help you stay on top of certain aspects of your vehicle's health. Add the Remote Access Plan<sup>3</sup> to start and stop or lock and unlock<sup>4</sup> a properly equipped vehicle via the available myBuick mobile app.<sup>5</sup> You can add a monthly data plan to your account at any time that allows you to stay connected on the go with your available built-in 4G LTE Wi-Fi<sup>®</sup> hotspot<sup>6</sup> (data plan required).

**myBUICK MOBILE APP<sup>5</sup>** Powerful and easy to use, the available myBuick mobile app lets you remotely connect to your vehicle from almost anywhere when you subscribe to paid Buick Connected Services. When properly equipped, you can unlock and lock your doors, remote-start or -stop your engine<sup>4</sup> and get real-time diagnostics that check your vehicle's fuel status, tire pressure,<sup>7</sup> mileage and more. The myBuick mobile app is also Apple Watch<sup>®</sup>-compatible, so you can remote-start or -stop the engine, lock and unlock the doors, honk the horn and flash the lights—all right from your wrist.

**APPLE CARPLAY<sup>™</sup> COMPATIBILITY<sup>8</sup>** Just plug in your compatible iPhone<sup>®</sup> and you'll have easy access to your contacts, maps and apps that you're familiar with on your vehicle's 8-inch diagonal colour touch-screen. You can also have Siri<sup>®</sup> send and read your text messages, and you can listen to all of your content from iTunes<sup>®</sup>, Apple Music<sup>™</sup> and other compatible audio apps.

**ANDROID AUTO<sup>™</sup> COMPATIBILITY<sup>9</sup>** Android Auto makes it easy to use the touch-screen display in your Encore to access your phone, texts and music. And with Google Maps, you can get voice-guided navigation, live traffic information, lane guidance and more while keeping your hands on the wheel and your eyes on the road.

**BUILT-IN 4G LTE WI-FI<sup>®</sup> HOTSPOT<sup>6</sup>** An available built-in 4G LTE Wi-Fi<sup>®</sup> hotspot (data plan required) supports up to seven devices from up to 15 metres away from the vehicle. So your passengers can use their favourite apps to stream movies, watch TV, play games, listen to music and check social media on the go.

<sup>1</sup>Limitations apply. Not transferable. Standard connectivity available to original purchaser for 10 years from the vehicle delivery date for model year 2019 and newer Buick vehicles. See onstar.ca for details and further plan limitations. Connected Access does not include emergency or security services. Availability of Connected Access and any of its services are dependant on compatible 4G LTE wireless networks and are also subject to change. <sup>2</sup>Capabilities vary by model and service plan. Visit onstar.ca for vehicle availability. Message and data rates may apply. Requires active service, email address on file and enrolment in Vehicle Diagnostics. Not all issues will deliver alerts. On-Demand Diagnostics requires a paid service plan. <sup>3</sup>Diagnostic capabilities vary by model and do not cover all vehicle conditions. Additional message and data rates may apply. Requires email address on file and enrolment in Vehicle Diagnostics. Remote Access Plan does not include emergency or security services. Services are subject to user terms and limitations. Visit onstar.ca for more details.

<sup>4</sup>Requires subscription to Remote Access Plan or Premium Access Plan. Services are subject to user terms and limitations and vary by vehicle model. Unlock feature requires automatic locks. Remote start requires GM factory-installed and enabled remote-start system. Visit onstar.ca for more details. <sup>5</sup>Available on select Apple<sup>®</sup> and Android<sup>™</sup> devices. Service availability, features and functionality are subject to limitations and vary by vehicle, device and the plan in which you are enrolled. Device data connection required. Visit onstar.ca for more details.

<sup>6</sup>Visit onstar.ca for vehicle availability, coverage maps, details and system limitations. Services and connectivity vary by model and conditions as well as geographical and technical restrictions. 4G LTE service available in select markets. Requires active connected vehicle services and a data plan to access the vehicle's built-in Wi-Fi<sup>®</sup> hotspot. Accessory Power must be active to use the Wi-Fi<sup>®</sup> hotspot. Data plans provided by AT&T<sup>®</sup> or its local service provider. Credit card is required for purchase. <sup>7</sup>Tire Pressure Monitoring System required (excludes spare). <sup>8</sup>Vehicle user interface is a product of Apple<sup>®</sup> and its terms and privacy statements apply. Requires compatible iPhone<sup>®</sup> and data plan rates apply. Apple CarPlay is a trademark of Apple, Inc. Siri, iPhone and iTunes are trademarks of Apple, Inc., registered in the U.S. and other countries. <sup>9</sup>Vehicle user interface is a product of Google<sup>™</sup> and its terms and privacy statements apply. Requires the Android Auto app on Google Play and an Android-compatible smartphone running Android 5.0 Lollipop or higher. Data plan rates apply. Android Auto is a trademark of Google LLC.

Encore Essence shown in Ebony Twilight Metallic with available features.



# ONSTAR SAFETY AND SECURITY

As you travel with the ones you care about most, available OnStar<sup>®1</sup> is with you to empower every moment. With a paid OnStar Safety & Security<sup>2</sup> Plan, you can have a 24/7 lifeline to specially trained Advisors, ready to help if you've been in a crash, your vehicle's been stolen, you're lost or you need Roadside Assistance.

**EMERGENCY HELP WHEN IT MATTERS MOST** Using built-in sensors, available Automatic Crash Response is designed to connect you to an Emergency Medical Dispatch-Certified Advisor<sup>3</sup> immediately after a crash to help get you the care you need, even if you can't ask for it. Using Injury Severity Prediction technology, these specially trained Advisors can notify first responders about the likelihood of serious injury so they can provide help right away. You can feel confident knowing you have a team, available 24/7, to help get you the assistance you need.

**SECURITY YOU CAN COUNT ON** If your vehicle is stolen, OnStar Advisors are ready to take action with available Stolen Vehicle Assistance. Once a vehicle is reported stolen, OnStar Advisors can work with the police to help attempt to recover it. They can slow the vehicle if conditions are safe and even prevent it from being restarted in certain circumstances. And with available Theft Alarm Notification,<sup>4</sup> if your vehicle alarm sounds, we can let you know via text, email or a phone call. One simple call puts a team into action to attempt to recover your vehicle quickly and safely in cooperation with local law enforcement.

The OnStar Safety & Security Plan and Connected Services have changed significantly. While many of the offered services are the same, available plans and pricing are different. Visit [onstar.ca](http://onstar.ca) to review all the details and limitations.

<sup>1</sup>Visit [onstar.ca](http://onstar.ca) for coverage maps, details and system limitations. Services vary by model, service plan and conditions as well as geographical and technical restrictions. Service plan required. <sup>2</sup>OnStar acts as a link to existing emergency service providers. Not all vehicles may transmit all crash data. Roadside service provided by Allstate Roadside Services, and limitations and restrictions apply. Stolen Vehicle Assistance requires armed factory-installed theft-deterrent system and selection of notification communication preference(s). These services are intended to assist with vehicle recovery and do not prevent theft or protect against damage or loss. Additional messaging and data rates may apply. Services are subject to user terms and limitations, and vary by vehicle model. Visit [onstar.ca](http://onstar.ca) for more details. <sup>3</sup>OnStar Emergency Advisors are certified by the International Academies of Emergency Dispatch. <sup>4</sup>Services are subject to user terms and other limitations and vary by vehicle model. Requires an armed GM factory-installed theft-deterrent system, a subscription to OnStar Security Plan, OnStar Guidance Plan or OnStar Safety & Security Plan, and the selection of notification communication preference(s). Additional messaging and data rates may apply. Visit [onstar.ca](http://onstar.ca) for more details.



Encore Essence shown in Ebony Twilight Metallic with available features.





Encore Essence shown in Ebony Twilight Metallic with available features.

## FEATURES

● STANDARD ○ AVAILABLE — NOT AVAILABLE

PREFERRED

SPORT TOURING

ESSENCE

	PREFERRED	SPORT TOURING	ESSENCE
1.4L TURBO ENGINE WITH VARIABLE VALVE TIMING (VVT) AND DOHC	Standard	See dealer or buick.ca for engine availability.	
1.4L TURBO ENGINE WITH VVT, SIDI AND STOP/START TECHNOLOGY	N/A		
60/40 SPLIT-FOLDING REAR SEAT	●	●	●
HEADLAMPS WITH LED DAYTIME RUNNING LAMPS	●	●	●
18" ALUMINUM WHEELS	●	●	●
10 AIRBAGS <sup>1</sup>	●	●	●
KEYLESS OPEN AND START	●	●	●
APPLE CARPLAY™ COMPATIBILITY <sup>2</sup>	●	●	●
ANDROID AUTO™ COMPATIBILITY <sup>3</sup>	●	●	●
BUICK INFOTAINMENT SYSTEM <sup>4</sup> WITH 8" DIAGONAL TOUCH-SCREEN	●	●	●
SIRIUSXM <sup>5</sup> RADIO 3-MONTH TRIAL SUBSCRIPTION	●	●	●
QUIETTUNING™ TECHNOLOGY WITH ACTIVE NOISE CANCELLATION	●	●	●
STABILITRAK STABILITY CONTROL SYSTEM	●	●	●
BUILT-IN 4G LTE WI-FI® HOTSPOT <sup>6</sup> (Data plan required)	○	○	○
CARGO SHADE	●	●	●
FLOOR MATS, FRONT AND REAR, CARPETED	●	●	●
REMOTE START	○	●	●
SIDE BLIND ZONE ALERT <sup>7</sup> AND REAR CROSS TRAFFIC ALERT <sup>8</sup>	○ <sup>9</sup>	○ <sup>9</sup>	●
ALL-WHEEL DRIVE	○	○	○
SUNROOF, POWER, TILT-SLIDING	○	○	○
FOG LAMPS	—	●	●
INSIDE AUTO-DIMMING REAR-VIEW MIRROR	—	○	●
BOSE® AUDIO, 7-SPEAKER SYSTEM WITH AMPLIFIER AND HD RADIO	—	○	○
BUICK INFOTAINMENT SYSTEM <sup>4</sup> WITH NAVIGATION <sup>10</sup>	—	○	○
REAR SPORT SPOILER	—	●	—
LEATHER-APPOINTED SEATING	—	—	●
HEATED FRONT SEATS	—	—	●
MEMORY SEAT, DRIVER	—	—	●
HEATED STEERING WHEEL	—	—	●
UNIVERSAL HOME REMOTE, INCLUDES GARAGE-DOOR OPENER, 3-CHANNEL PROGRAMMABLE	—	—	●



## PACKAGES

● STANDARD ○ AVAILABLE — NOT AVAILABLE

PREFERRED SPORT TOURING ESSENCE

<b>SAFETY PACKAGE:</b> Includes Side Blind Zone Alert, <sup>7</sup> Rear Cross Traffic Alert <sup>8</sup> and 120-volt power outlet located at the rear of the centre console	○	○	●
<b>SAFETY PACKAGE II:</b> Includes Front and Rear Park Assist, <sup>9</sup> Forward Collision Alert, <sup>8</sup> Lane Departure Warning, <sup>8</sup> In-Vehicle Air Ionizer and Rainsense Wipers	—	—	○
<b>EXPERIENCE BUICK PACKAGE:</b> Includes easy-to-use Buick Infotainment System <sup>4</sup> with Navigation, <sup>10</sup> tilt-sliding power sunroof and 18" 7-spoke chromed aluminum wheels	—	—	○
<b>BUICK INTERIOR PROTECTION PACKAGE:</b> Includes the following dealer-installed accessories: first- and second-row colour-keyed all-weather floor mats and colour-keyed cargo mat (not available with Active Package or Road Trip Package)	○	○	○
<b>ACTIVE PACKAGE:</b> Includes the following dealer-installed accessories: cargo-area tray and accessory carrier hitch (not available with Buick Interior Protection Package)	○	○	○
<b>ROAD TRIP PACKAGE:</b> Includes the following dealer-installed accessories: all-weather floor mats and roof-rack cross rails (not available with Buick Interior Protection Package)	○	○	○

## DIMENSIONS, MM (INCHES)

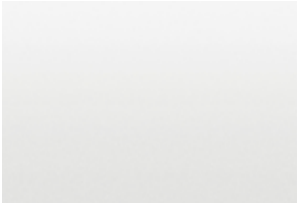
## CAPACITIES

Wheelbase	2555 (100.6)	Engine Type	1.4L Turbo with VVT
Overall length	4278 (168.4)	Horsepower	138 hp @ 4900 rpm
Body width	1774 (69.9)	Torque	148 lb.-ft. @ 1850 rpm
Overall height, with luggage rails	1658 (65.3)	Estimated Fuel Consumption, L/100 km (mpg) <sup>11</sup>	9.4 (30) city/7.8 (36) hwy (FWD); 9.9 (29) city/8.1 (35) hwy (AWD)
Minimum ground clearance, front	158 (6.2)	Available Engine Type	1.4L Turbo with VVT, SIDI and Stop/Start technology
Head room, first row	1005 (39.6)	Horsepower	153 hp @ 5600 rpm
Head room, second row	985 (38.8)	Torque	177 lb.-ft. @ 2000-4000 rpm
Shoulder room, first row	1376 (54.2)	Estimated Fuel Consumption, L/100 km (mpg) <sup>11</sup>	8.9 (32) city/7.5 (38) hwy (FWD); 9.4 (30) city/7.9 (36) hwy (AWD)
Shoulder room, second row	1335 (52.6)	Cargo Capacity, <sup>12</sup> litres (cu. ft.)	1370.7 (48.4) behind first-row seats with second-row seats folded 532.4 (18.8) behind second-row seats
Hip room, first row	1312 (51.7)	Seating Capacity	2/3 (front/rear)
Hip room, second row	1272 (50.1)	Fuel Tank, litres (imp. gal.) (approx.)	53 (11.7)
Leg room, first row	1037 (40.8)	Base Curb Weight, kg (lb.)	1468 (3,237) (FWD); 1523 (3,358) (AWD)
Leg room, second row	908 (35.8)		

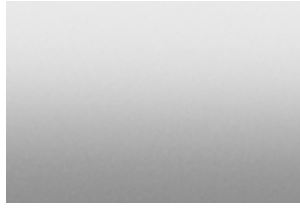
<sup>1</sup>Always use seat belts and the correct child restraint for your child's age and size, even with airbags. Even in vehicles equipped with the Passenger Sensing System, children are safer when properly secured in a rear seat in the appropriate infant, child or booster seat. Never place a rear-facing infant restraint in the front seat of any vehicle equipped with an active frontal airbag. See your vehicle Owner's Manual and child safety seat instructions for more safety information. <sup>2</sup>Vehicle user interface is a product of Apple® and its terms and privacy statements apply. Requires compatible iPhone® and data plan rates apply. Apple CarPlay is a trademark of Apple, Inc. Siri, iPhone and iTunes are trademarks of Apple, Inc., registered in the U.S. and other countries. <sup>3</sup>Vehicle user interface is a product of Google™ and its terms and privacy statements apply. Requires the Android Auto app on Google Play and an Android™-compatible smartphone running Android 5.0 Lollipop or higher. Data plan rates apply. Android Auto is a trademark of Google LLC. <sup>4</sup>Functionality varies by model. Full functionality requires compatible Bluetooth® and smartphone, and USB connectivity for some devices. <sup>5</sup>Available in 10 Canadian provinces, three territories and the 48 contiguous United States. Subscription sold separately after trial period. If you decide to continue your service at the end of your trial subscription, the plan you choose will automatically renew and bill at then-current rates until you call 1-888-539-7474 to cancel. Other fees and taxes will apply. All fees and programming subject to change. See the Customer Agreement for complete terms at [siriusxm.ca/terms](http://siriusxm.ca/terms). <sup>6</sup>Visit [onstar.ca](http://onstar.ca) for vehicle availability, details and system limitations. Services and connectivity vary by model and conditions as well as geographical and technical restrictions. Requires active connected vehicle services and data plan. Data plans provided by AT&T® or its local service provider. Accessory Power must be active to use the Wi-Fi® hotspot. <sup>7</sup>Before making a lane change, always check the exterior and interior rear-view mirrors, look over your shoulder for vehicles and hazards and start the turn signal. <sup>8</sup>Read the vehicle Owner's Manual for important feature limitations and information. <sup>9</sup>Included and only available with Safety Package. <sup>10</sup>At time of printing, detailed map coverage is available for most major urban areas of the United States and for certain metropolitan areas of Canada (Vancouver, Calgary, Edmonton, Winnipeg, Windsor, London, Toronto, Ottawa, Montreal, Quebec City and Halifax). Coverage is significantly limited outside these areas. <sup>11</sup>Estimated fuel-consumption ratings based on GM testing in accordance with Government of Canada approved test methods. Refer to [vehicles.nrcan.gc.ca](http://vehicles.nrcan.gc.ca) for details. Your actual fuel consumption may vary. <sup>12</sup>Cargo and load capacity limited by weight and distribution. All cargo should be properly secured and stowed.

---

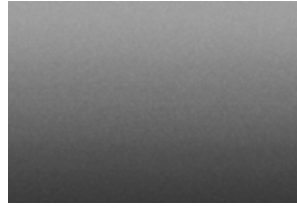
## EXTERIOR COLOURS



Summit White



Quicksilver Metallic<sup>1</sup>



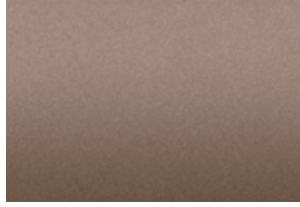
Satin Steel Metallic<sup>1,2</sup>



Winterberry Red Metallic<sup>1</sup>



White Frost Tricoat<sup>1</sup>



Coppertino Metallic<sup>1</sup>



Ebony Twilight Metallic<sup>1</sup>



Deep Azure Metallic<sup>1,2</sup>

<sup>1</sup>Additional charge, premium paint. <sup>2</sup>Not available at start of production.

---

## INTERIOR COLOURS



Shale Cloth With Leatherette<sup>3</sup>  
or Leather-Appointed Seating<sup>4</sup>



Brandy Leather-Appointed  
Seating<sup>4,5</sup>



Ebony Cloth With Leatherette<sup>3</sup>  
or Leather-Appointed Seating<sup>4</sup>

Ebony accents included with all interior colours.

<sup>3</sup>Available on Preferred and Sport Touring. <sup>4</sup>Available on Essence. <sup>5</sup>Not available with Quicksilver Metallic or Winterberry Red Metallic.

---

## WHEELS



18" 10-Spoke Aluminum  
With Light Argent Finish  
Exclusive to Preferred.



18" Midnight Silver  
Aluminum Alloy  
Exclusive to Sport Touring.



18" 10-Spoke Aluminum  
With Technical Grey  
Finish  
Exclusive to Essence.



18" 7-Spoke Chromed  
Aluminum<sup>6</sup>  
Available on Essence.

<sup>6</sup>Included and only available with the Experience Buick Package.



# IMPORTANT WORDS

**BUICK OWNERSHIP: IT'S A GOOD FEELING.** Our commitment to you includes:

- 2-year/48,000 km Lube-Oil-Filter Maintenance<sup>1</sup>
- 4-year/80,000 km Base Warranty Coverage<sup>2</sup>
- 6-year/110,000 km Powertrain Component Warranty Coverage<sup>2</sup> with \$0 deductible on repairs; warranty is fully transferable at no charge
- 6-year/110,000 km Courtesy Transportation<sup>2</sup>
- 6-year/110,000 km 24/7 Roadside Assistance<sup>2</sup>
- 6-year/unlimited km sheet metal rust-through perforation coverage<sup>2</sup>
- 8-year/130,000 km coverage on catalytic converters and Powertrain Control Modules (PCMs)<sup>2</sup>

<sup>1</sup>Whichever comes first. Limit of four complimentary Lube-Oil-Filter services in total. Fluid top-offs, inspections, tire rotations, wheel alignments and balancing, etc., are not covered. Conditions and limitations apply. See your dealer for details.

<sup>2</sup>Whichever comes first. Conditions and limitations apply. See your dealer for details.

## OTHER OWNERSHIP PRIVILEGES AND PROGRAMS:<sup>3</sup>

- **BUICK PROTECTION PLAN** – The only extended service plan backed by the resources and commitment of General Motors; Buick Protection Plan may be purchased at the time of sale or subsequently during the Base Warranty coverage period.
- **BUICK CERTIFIED SERVICE** – With Buick-certified technicians and Buick-approved parts, nobody knows your Buick vehicle better.
- **CERTIFIED SERVICE MAINTENANCE PLAN** – The only maintenance plan designed specifically for buyers of Buick vehicles and backed by the resources and commitment of General Motors. Buick Maintenance Plans may be purchased at the time of sale or on vehicles up to 3 model years old and with 60,000 km or less on the odometer.
- **BUICK OWNER CENTRE** – As an owner, take advantage of the Buick Owner Centre. This online owner's destination gives you access to contests, current offers and helpful resources such as Owner's Manuals. Find out more at [buickowner.ca](http://buickowner.ca).

<sup>3</sup>Conditions and limitations apply.

## TO HELP YOU PURCHASE OR LEASE YOUR NEW BUICK:

- **PURCHASE FINANCING AND LEASING** – On-the-spot financing. See dealer for full details.<sup>4</sup>
- **GM STUDENT BONUS PROGRAM** – Students or recent graduates of high school, college or university<sup>5</sup> may be entitled to receive a Student Bonus vehicle redemption allowance of \$500 or \$750<sup>6</sup> (tax inclusive) (purchased vehicle dependant) to use toward the purchase, lease or finance of one eligible new Buick vehicle.
- **GM CARD** – Cardholders may redeem Earnings toward the total purchase price or lease down payment of an eligible new Chevrolet, Buick, GMC or Cadillac. Restrictions and limitations apply.<sup>6</sup> For full program details, please visit [gmcad.ca](http://gmcad.ca).

<sup>4</sup>Subject to eligibility. <sup>5</sup>Conditions and limitations apply. <sup>6</sup>Program subject to change.

**INFORMATION RESOURCES:** You can find more information about these programs from your GM dealer, or at these information centres:

- The Buick website at [buick.ca](http://buick.ca).
- The GM Customer Care Centre at 1-800-GM-DRIVE (1-800-463-7483 or 1-800-263-3830 for TDD users).

**A WORD ABOUT THIS BROCHURE** Some of the equipment shown or described throughout this brochure may be available at extra cost. We have tried to make this brochure comprehensive and factual. We reserve the right, however, to make changes at any time without notice, in prices, colours, materials, equipment, specifications, models and availability. Specifications, dimensions, measurements, ratings and other numbers in this brochure and other printed materials provided at the dealership or affixed to vehicles are approximates based upon design and engineering drawings and prototypes and laboratory tests. Your vehicle may differ due to variations in manufacture and equipment. Since some information may have been adapted since the time of printing, please check with your GM dealer for complete details. General Motors of Canada Company reserves the right to lengthen or shorten the model year for any product, for any reason, or to start and end model years at different times.

**A WORD ABOUT ASSEMBLY** GM vehicles are equipped with engines and components produced and assembled by different operating units of General Motors, its subsidiaries and suppliers, and these engines and components may change or be obtained from different sources from time to time. All such engines and components are approved for use in GM vehicles. Certain equipment ordered may be unavailable at the time of assembly and we suggest that you verify that your vehicle includes the equipment you ordered, or if there are changes, that they are acceptable to you.

**TRADEMARKS** The marks appearing in this brochure, including, but not limited to: General Motors, GM, Buick, the Buick logo, Encore and their respective logos, emblems, slogans and vehicle model names and body designs; and other marks such as StabiliTrak, are trademarks of General Motors and/or General Motors of Canada Company, its subsidiaries, affiliates or licensors. SiriusXM Canada, Inc., "SiriusXM," the SiriusXM logo, channel names and logos are trademarks of SiriusXM Radio, Inc., and are used under licence. The Facebook logo is a trademark of Facebook, Inc. The Twitter logo is a trademark of Twitter, Inc. The YouTube logo, Android Auto, Google Maps and Google Play are trademarks of Google LLC. Apple CarPlay, iTunes, Apple Music, Apple Watch, Siri and iPhone are registered trademarks of Apple, Inc., registered in the U.S. and other countries. The Instagram logo is a trademark of Instagram, LLC. Bose and Centerpoint are registered trademarks of Bose Corporation.

**COPYRIGHT** ©2018 General Motors of Canada Company. All rights reserved. All text, images, graphics and other materials in this brochure are subject to the copyright and other intellectual property rights of General Motors and/or General Motors of Canada Company. These materials may not be reproduced, distributed or modified without the express written permission of General Motors and/or General Motors of Canada Company.



**BUICK**

BUICK.CA

