

CRUZE 2019

CHEVROLET



Cruze Premier Sedan in Satin Steel
Grey Metallic (extra-cost colour) and
Cruze Premier Hatchback in Red Hot
with available RS Package.



ESCAPE THE ORDINARY AND GET READY TO DREAM BIG.

We all have things we want to accomplish, places we want to get to. Refreshed and ready to help you take on the road, the 2019 Cruze Sedan and Hatchback make it easy to explore life's possibilities. With an aerodynamic silhouette and sporting an updated look, Cruze makes a bold first impression. And a selection of new colours helps you express your own style.

Choose from two refined powertrains – a standard 153-horsepower 1.4L turbocharged gas engine or an available 1.6L Turbo-Diesel engine with 240 lb.-ft. of torque. Either way, you're in for impressive fuel efficiency.

Isn't it time you lived your dream, today, tomorrow and into what promises to be an amazing future? With all the entertainment technology, plus remarkable fuel efficiency and available advanced safety features, Cruze is the car for people with bigger dreams.

FIND NEW ROADS™

1. LOOK AHEAD. Dual-function projector-beam headlamps with signature LED daytime running lamps are standard on LT, Diesel and Premier models.

2. YOU'LL BE NOTICED. Included with the available RS Package, Black bowtie emblems and Black exterior accents command attention.

3. YOU CAN TAKE IT WITH YOU. Savvy and functional, Cruze Hatchback offers versatility and well-integrated storage with up to 1337 L (47.2 cu. ft.)¹ of cargo space with the 60/40 split-folding rear seats folded flat.



¹ Cargo and load capacity limited by weight and distribution.

Cruze Premier Hatchback in Silver Ice Metallic with available features including the RS Package.



CUT THROUGH THE EVERYDAY.

Cruze breaks away from the pack with a dynamic silhouette. The swept roofline and dramatic angles contribute to the vehicle's aero-efficiency and provide an exciting aesthetic.

THE HAPPENING HATCHBACK.

Cruze Hatchback has the versatility to help get you through all of life's adventures and the cool good looks that make it seem easy. Whether hauling a pair of subwoofers to a show or carrying a carload of gear to the campsite with a perfect view, you've got all the space

you need without losing any style.

Building on signature Chevrolet design DNA, Cruze Hatchback has a modern look that's expressed in flowing, sculpted lines. In addition to LT, Diesel and Premier Hatchbacks, there's a new LS Hatchback for 2019.

THE DETAILS MATTER.

Athletic design moves to the next level with the available RS Package, which includes front and rear sport fascias, a rear spoiler, rockers and fog lamps.

INTERIOR DESIGN



Cruze Premier Sedan interior in Jet Black with available features.

The sleek design story continues in an interior created to make every moment of the journey more rewarding. Cruze blends good looks and great functionality with an intuitive layout and plenty of room for friends and life's other necessities.

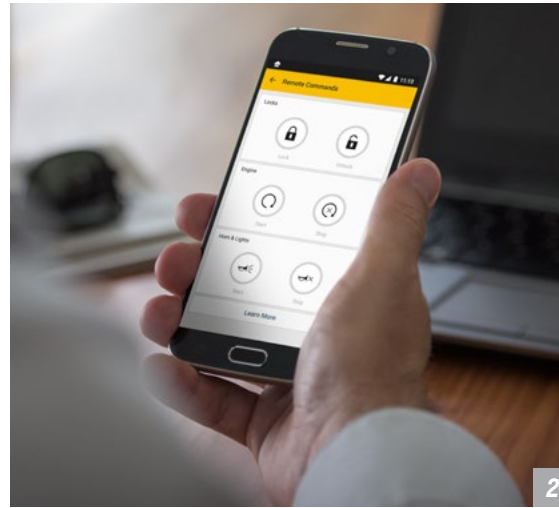
ENJOY PERSONAL SPACE. With ample front and rear legroom, you can stretch out and enjoy the ride. Generous rear knee clearance allows for ease of entry and exit, which comes in handy when heading out on a road trip with friends.

COMFORT AT YOUR COMMAND. Chase the chill away with heated front seats, standard on LT, Diesel and Premier. A heated steering wheel is ideal for brisk days, standard on Premier and available on Diesel.

STORAGE SOLUTIONS. The signature dual cockpit interior provides ingenious space for the important things. There's a slot to tuck away your smartphone in the centre armrest, two USB ports¹ and additional storage in the centre console.

¹ Not compatible with all devices.

TECHNOLOGY



1. EASY ACCESS TO YOUR SMARTPHONE. With Android Auto™¹ compatibility, you can interact with select smartphone apps. This system takes some of your compatible Android™ phone's features and lets you access them on the touch-screen display. You can access your phone, text messages, music, navigation and more.

2. myChevrolet® MOBILE APP² Simply download the app to your compatible smartphone and with an eligible active service plan³ and a properly equipped vehicle, you can start or turn off your engine⁴; lock or unlock your doors⁴; view key vehicle diagnostic information⁵; set parking reminders and more.

3. Apple CarPlay® COMPATIBILITY. With Apple CarPlay,⁶ you can simply and smartly connect with some of your most used iPhone® features, including Maps, Music, Messages and Phone, right on your touch-screen display.

4. INSIDE INFORMATION. The Driver Information Centre allows you to monitor speed and set an audible speed warning. You also get directions with Turn-by-Turn Navigation⁷ included in the OnStar Safety & Security Plan⁸ (comes with 1-month coverage).

¹ Vehicle user interface is a product of Google and its terms and privacy statements apply. Requires the Android Auto app on Google Play and an Android compatible smartphone running Android 5.0 Lollipop or higher. Data plan rates apply. ² Available on select Apple and Android devices. Service availability, features and functionality are subject to limitations and vary by vehicle, device and the plan in which you are enrolled. Device data connection required. Visit onstar.ca for more details. ³ Requires subscription to Remote Access Plan or Premium Access Plan. Remote Access Plan does not include emergency or security services. Services are subject to user terms and limitations, and vary by vehicle model. Visit onstar.ca for more details. ⁴ Unlock feature requires automatic locks. Remote start requires GM factory-installed and enabled remote start system. Visit onstar.ca for more details. ⁵ Diagnostic capabilities vary by model and do not cover all vehicle conditions. Additional message and data rates may apply. Requires email address on file and enrollment in Vehicle Diagnostics. ⁶ Vehicle user interface is a product of Apple and its terms and privacy statements apply. Requires compatible iPhone and data plan rates apply. ⁷ Requires subscription to OnStar Guidance Plan, Premium Access Plan, OnStar Safety & Security Plan, or Navigation Add-On. Services are subject to user terms and limitations and vary by vehicle model. Visit onstar.ca for more details. ⁸ OnStar acts as a link to existing emergency service providers. Not all vehicles may transmit all crash data. Roadside services provided by Allstate Roadside Services, and limitations and restrictions apply. Stolen Vehicle Assistance requires armed factory-installed theft-deterrent system and selection of notification communication preference(s). These services are intended to assist with vehicle recovery and do not prevent theft or protect against damage or loss. Additional messaging and data rates may apply. Services are subject to user terms and limitations, and vary by vehicle model. Visit onstar.ca for more details.



ONE TOUCH TO THE PERFECT TEMPERATURE. Single-zone automatic climate controls are standard on Cruze LT and Premier, so you can select your ideal temperature and never have to worry about it again.

TECHNOLOGICAL ZEN. The standard 7-in. diagonal full-colour Chevrolet Infotainment 3 System¹ display lets you stay in tune with your Cruze. Connect your compatible smartphone via Bluetooth^{®2} wireless technology and listen to music, get directions or make hands-free phone calls.

Wi-Fi[®] IN YOUR CRUZE. Chevrolet offers an available built-in 4G LTE Wi-Fi[®] hotspot³ (data plan required) providing a fast Internet connection for up to seven compatible devices.

¹ Chevrolet Infotainment System functionality varies by model. Full functionality requires compatible Bluetooth and smartphone, and USB connectivity for some devices. Data plan rates may apply. ² Visit mychevrolet.ca to find out which phones are compatible with the vehicle. ³ Visit onstar.ca for vehicle availability, coverage maps, details and system limitations. Services and connectivity vary by model and conditions as well as geographical and technical restrictions. 4G LTE service available in select markets. Requires active connected vehicle services and a data plan to access the vehicle's built-in Wi-Fi hotspot. Accessory Power must be active to use the Wi-Fi hotspot. Data plans provided by AT&T or its local service provider. Credit card is required for purchase.



1. A GREAT LOOK BACK. When travelling in Reverse at low speeds, the standard Rear Vision Camera¹ provides a real-time picture of the area immediately behind your vehicle to help you see if anything is in your way.

2. TECH AT YOUR FINGERTIPS. Use the available steering wheel-mounted controls and voice recognition capabilities to take calls, receive text messages or play your favourite tunes hands-free.

3. DON'T FORGET YOUR LAPTOP. Rear Seat Reminder² activates when the rear doors are opened and closed up to 10 minutes before or anytime while your vehicle is on, so when you turn off the engine, under certain conditions, you will get a reminder to double-check for valuables left behind.

¹ Safety or driver assistance features are no substitute for the driver's responsibility to operate the vehicle in a safe manner. The driver should remain attentive to traffic, surroundings and road conditions at all times. Visibility, weather and road conditions may affect feature performance. Read the vehicle Owner's Manual for more important feature limitations and information. ² Does not detect people or items. Always check rear seat before exiting.

PERFORMANCE



Cruze Premier Sedan in Satin Steel Grey Metallic (extra-cost colour) with available RS Package.

GET UP AND GO. Cruze features a standard 1.4L turbocharged engine and a 6-speed automatic transmission for a highway fuel consumption estimate as low as 6.2 L/100 km.^{1,2} Cruze offers the combination of technology and efficiency that can help you go longer between fill-ups.

SMOOTH IN THE TURN. Cruze steering, suspension and braking systems are designed to deliver tight handling that makes every model a blast to drive. With Premier and the available RS Package, a special Z-link rear suspension adds to the precision.

STOPPING POWER. Control is important in a vehicle that performs the way Cruze does. Standard Duralife® brake rotors on all models feature corrosion-resistant technology that provides protection against rust and helps to prevent steering wheel shudder during braking.

¹ Fuel consumption estimates based on GM testing in accordance with Government of Canada approved test methods. Refer to vehicles.nrcan.gc.ca for details. Your actual fuel consumption may vary. ² Cruze Sedan and Hatchback equipped with the 1.4L turbocharged engine city fuel consumption estimate is 8.3 L/100 km. Cruze Premier Hatchback highway fuel consumption estimate is 6.4 L/100 km and the city fuel consumption estimate is 8.5 L/100 km.

Cruze Diesel Sedan in Kinetic Blue Metallic (extra-cost colour) with available features.



DIESEL CAN MAKE A DIFFERENCE.

Meet the Cruze Diesel Sedan, featuring a 1.6L Turbo-Diesel engine that offers a highway fuel consumption estimate as low as 4.9 L/100 km^{1,2} to help you be ready to travel the extra distance.

CRUZE DIESEL HATCHBACK.

The Cruze Diesel Hatchback offers a highway fuel consumption estimate of 5.2 L/100 km¹ and a city fuel consumption estimate of 7.8 L/100 km¹. The 1.6L Turbo-Diesel engine is paired with a 9-speed automatic transmission.

¹ Fuel consumption estimates based on GM testing in accordance with Government of Canada approved test methods. Refer to vehicles.nrcan.gc.ca for details. Your actual fuel consumption may vary. ² Cruze Diesel Sedan city fuel consumption estimate is 7.6 L/100 km.

1. NERVES OF STEEL. Front and rear “crush zones” are designed to compress in a controlled manner, helping absorb and channel energy away from the cabin.

2. LEARN BETTER DRIVING HABITS. Perfect for new drivers, Teen Driver technology helps encourage better driving habits by providing an in-vehicle report card that monitors the activation frequency of certain available safety features, muting the audio system when front-seat occupants aren’t wearing their seat belts, and giving audible and visual warnings when the vehicle is travelling over a predetermined speed.

3. ONSTAR AUTOMATIC CRASH RESPONSE. In a crash, built-in sensors are designed to send a signal that can alert a specially trained, Emergency Medical Dispatch-certified advisor¹ who can help you get the assistance you need – even if you can’t ask for it. The advisor can use GPS technology to help pinpoint your vehicle’s location. This service requires a paid subscription to the OnStar Safety & Security Plan.²



1



2



3

¹ OnStar advisors are certified by the International Academies of Emergency Dispatch. ² OnStar acts as a link to existing emergency service providers. Not all vehicles may transmit all crash data. Roadside service provided by Allstate Roadside Services, and limitations and restrictions apply. Stolen Vehicle Assistance requires armed factory-installed theft-deterrent system and selection of notification communication preference(s). These services are intended to assist with vehicle recovery and do not prevent theft or protect against damage or loss. Additional messaging and data rates may apply. Services are subject to user terms and limitations, and vary by vehicle model. Visit onstar.ca for more details.

CRUZE PUTS SAFETY FIRST. THE SAME WAY YOU DO.



LOW SPEED FORWARD AUTOMATIC BRAKING.

If the vehicle is travelling at a low speed and the system detects that a front-end collision situation is imminent while following a detected vehicle and the driver has not already applied the brakes, the system can automatically apply the brakes to help reduce the collision's severity. The system may even help avoid a collision at very low speeds. Available on Premier.



FORWARD COLLISION ALERT AND FOLLOWING DISTANCE INDICATOR.

The Forward Collision Alert feature is designed to monitor how close your vehicle is to a detected vehicle in front of you. If the system determines that a front-end collision with a detected vehicle is imminent, it is designed to alert the driver to a potential crash. The available Following Distance Indicator can provide the driver with the following time to a moving vehicle detected in front of them. Available on Premier.



LANE KEEP ASSIST WITH LANE DEPARTURE WARNING.

This camera-based system monitors road lines and can provide gentle steering wheel turns (and Lane Departure Warning alerts if necessary) to help drivers avoid unintentionally drifting out of their detected lane when they are not actively steering and their turn signal is not activated. Available on Premier.



AVAILABLE LANE CHANGE ALERT WITH SIDE BLIND ZONE ALERT. Radar sensors in the rear corners of the vehicle are designed to help detect fast-approaching vehicles in the adjacent lanes as well as moving vehicles in the side mirror blind zones. Amber icons in the exterior mirrors indicate a vehicle's presence.



AVAILABLE REAR CROSS TRAFFIC ALERT. Using radar sensors, this available feature is designed to alert the driver to crossing vehicles behind Cruze when in Reverse. Audible warnings, as well as visual alerts on the Rear Vision Camera screen, are triggered if approaching vehicles are detected.



REAR VISION CAMERA. When the transmission is in Reverse, the Rear Vision Camera with dynamic guiding lines allows the driver to view objects directly behind the vehicle via the screen in the centre stack. So it's easier to back up or park.



REAR PARK ASSIST. This available feature is designed to alert the driver, when in Reverse, by sounding an audible alert and providing visual indication on the Rear Vision Camera display when it detects certain stationary objects in close proximity behind the vehicle.



INTELLIBEAM HEADLAMPS. When oncoming headlamps are sensed or when tail lamps are detected in front of the vehicle, the available IntelliBeam® high beam assist intuitively adjusts between low and high beams. Available on Premier.

Safety starts with you. Safety or driver assistance features are no substitute for the driver's responsibility to operate the vehicle in a safe manner. The driver should remain attentive to traffic, surroundings and road conditions at all times. Visibility, weather and road conditions may affect feature performance. Read the vehicle Owner's Manual for more important feature limitations and information.

ACCESSORIES

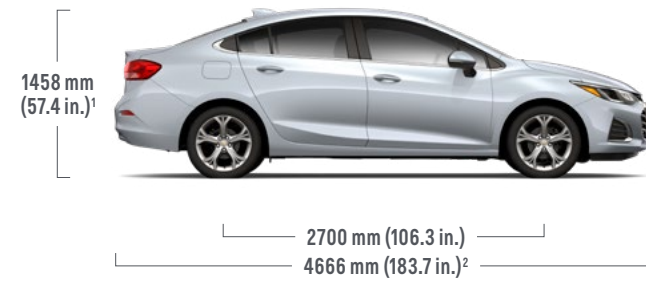


Illuminated Front Door Sill Plates available from Chevrolet Accessories.



All-Weather Floor Liners available from Chevrolet Accessories.

DIMENSIONS



EXTERIOR, mm (in.)

Width	1791 (70.5)
Front Track	1544 (60.8)
Rear Track	1557 (61.3)

INTERIOR, mm (in.) front/rear

Headroom	988/947 ³ (38.9/37.3 ³)
Legroom	1067/917 (42.0/36.1)
Shoulder Room	1394/1351 (54.9/53.2)
Hip Room	1351/1318 (53.2/51.9)

CAPACITIES

Cargo Volume, L (cu. ft.) ⁴	
- Rear Seats in Position (LS Sedan)	419 (14.8)
- Rear Seats in Position (LT and Premier Sedan)	394 (13.9)
- Rear Seats in Position (Hatchback)	643 (22.7)
- Rear Seats Folded (Hatchback)	1337 (47.2)

Fuel Tank, L (imp. gal.)	
- 1.4L turbo I-4 models	52 (11.4)
- 1.6L TD I-4 models	51 (11.2)

CURB WEIGHT, kg (lb.)

- LS Sedan	1302 (2870)
- LT Sedan	1329 (2930)
- LT Hatchback	1323 (2917)
- Premier Sedan	1356 (2989)
- Premier Hatchback	1351 (2978)

ESTIMATED FUEL CONSUMPTION RATINGS, L / 100 km (mpg)⁵

	CITY	HIGHWAY
- 1.4L turbo I-4 - Sedan	8.3 (34)	6.2 (46)
- 1.4L turbo I-4 - LS and LT Hatchback	8.3 (34)	6.2 (46)
- 1.4L turbo I-4 - Premier Hatchback	8.5 (33)	6.4 (44)
- 1.6L TD I-4 - Sedan	7.6 (37)	4.9 (58)
- 1.6L TD I-4 - Hatchback	7.8 (36)	5.2 (54)

¹ Hatchback overall height is 1466 mm (57.7 in.). ² Hatchback overall length is 4453 mm (175.3 in.). ³ Hatchback rear headroom is 960 mm (37.8 in.). ⁴ Cargo and load capacity limited by weight and distribution. ⁵ Fuel consumption estimates based on GM testing in accordance with Government of Canada approved test methods. Refer to vehicles.nrcan.gc.ca for details. Your actual fuel consumption may vary.

Chevrolet Accessories are dealer-installed and covered by the 3-year/60,000 kilometre (whichever comes first) Base Warranty Coverage of the New Vehicle Limited Warranty when ordered with your new Cruze. Conditions apply. See Warranty Booklet for details. Some vehicles are shown with equipment from an independent supplier. GM licensed and Associated Accessories are covered under the accessory-specific manufacturer's warranty and are not warranted by GM or its dealers. GM is not responsible for the safety or quality of independent supplier alterations.

SELECT VEHICLE FEATURES

CRUZE LS SEDAN/HATCHBACK

Cruze LS includes these standard features:

153 hp ECOTEC® 1.4L turbo DOHC I-4 engine with Direct Injection and Variable Valve Timing (VVT)
Auto Stop/Start engine feature
6-speed automatic transmission with Driver Shift Control
4-wheel disc brakes with Duralife brake rotors, ABS, Brake Assist, cornering brake control and Hill Start Assist
StabiliTrak® Electronic Stability Control System and traction control
MacPherson strut independent front suspension and compound crank rear suspension
15-in. steel wheels with bolt-on wheel covers
Power exterior mirrors
Rear spoiler (Hatchback)
Rear Vision Camera ¹
Remote keyless entry system
Content theft alarm
Driver Information Centre with oil life monitoring system and tire pressure monitoring system (excludes spare tire)
Power windows and programmable door locks
Tilt and telescopic adjustable steering column
Electronic single-zone air conditioning with air filtration system
Humidity sensor
Sunshades with vanity mirrors
Front bucket seats with manual 6-way driver-seat adjuster, cloth seating surfaces and folding rear seat
Rear cargo cover (Hatchback)
Chevrolet Infotainment 3 System ² with 7-in. diagonal colour touch-screen display
4-speaker audio system
Teen Driver technology ¹
Bluetooth® ³ hands-free phone connectivity and wireless audio streaming
USB ports ⁴ ; two, with auxiliary audio input jack
1-month trial of Chevrolet Connected Services and OnStar Safety & Security Plan coverage ⁵

CRUZE LS SEDAN/HATCHBACK (CONTINUED)

Chevrolet Connected Access ⁶ with 10 years of standard connectivity, which enables services such as Vehicle Diagnostics ⁷ , Dealer Maintenance Notification ⁷ and more
Built-in 4G LTE Wi-Fi® hotspot ⁸ ; includes 1-month or 3 GB data plan trial (whichever comes first) from vehicle delivery date

CRUZE LT SEDAN/HATCHBACK

Cruze LT enhances LS features with:

16-in. aluminum wheels
LED daytime running lamps
Projector-style halogen headlamps
Heated, power exterior mirrors
Remote vehicle starter system
Automatic single-zone air conditioning with air filtration system
Cruise control
Steering wheel-mounted Bluetooth®, ³ cruise and audio system controls
Heated front bucket seats
60/40 split-folding rear seatback with rear centre armrest
SiriusXM® Radio ⁹ 3-month trial subscription
6-speaker audio system
USB charge-only port ⁴ ; rear

CRUZE DIESEL SEDAN/HATCHBACK

Cruze Diesel enhances LT features with:

137 hp 1.6L Turbo-Diesel DOHC I-4 engine with Direct Injection and Variable Valve Timing (VVT)
9-speed automatic transmission with Driver Shift Control
Lane Change Alert with Side Blind Zone Alert ¹
Rear Cross Traffic Alert ¹
Rear Park Assist ¹
Keyless Open and Start
Electronic single-zone air conditioning with air filtration system
Power 8-way driver-seat adjuster

CRUZE PREMIER SEDAN/HATCHBACK

Cruze Premier enhances LT features with:

Z-link compound crank rear suspension
17-in. aluminum wheels
LED tail lamps
Keyless Open and Start
Heated, leather-wrapped steering wheel
Sunshades with illuminated vanity mirrors
Leatherette seating surfaces
Power 8-way driver-seat adjuster
Manual 4-way front-passenger seat adjuster

¹ Read the vehicle Owner's Manual for important feature limitations and information. ² Chevrolet Infotainment System functionality varies by model. Full functionality requires compatible Bluetooth and smartphone, and USB connectivity for some devices. Data plan rates may apply. ³ Visit mychevrolet.ca to find out which phones are compatible with the vehicle. ⁴ Not compatible with all devices. ⁵ Includes navigation services, Remote Access Plan, plus a 3 GB or 1-month (whichever comes first) data plan trial from the vehicle delivery date. Data plan provided by AT&T or its local service provider. Requires vehicle electrical system (including battery), wireless service and GPS satellite signal to be available and operating for features to function properly. Visit onstar.ca for more details. Availability subject to change. ⁶ Standard connectivity available only to original purchaser for 10 years. Connected Access services are subject to change. Does not include emergency or security services. Compatible 4G LTE wireless coverage required. See onstar.ca for details and limitations. ⁷ Capabilities vary by model. Message and data rates may apply. Requires contact method on file and enrollment to receive alerts. Not all issues will deliver alerts or notifications. See onstar.ca for details and limitations. ⁸ Visit onstar.ca for vehicle availability, coverage maps, details and system limitations. Services and connectivity vary by model and conditions as well as geographical and technical restrictions. 4G LTE service available in select markets. Requires active connected vehicle services and a data plan to access the vehicle's built-in Wi-Fi hotspot. Accessory Power must be active to use the Wi-Fi hotspot. Data plans provided by AT&T or its local service provider. Credit card is required for purchase. ⁹ Available in 10 Canadian provinces, 3 territories and the 48 contiguous United States. Subscription sold separately after trial period. If you decide to continue your service at the end of your trial subscription, the plan you choose will automatically renew and bill at then-current rates until you call 1-888-539-7474 to cancel. Other fees and taxes will apply. All fees and programming subject to change. See the Customer Agreement for complete terms at siriusxm.ca/terms.


SPECIFICATIONS

● STANDARD ○ AVAILABLE – NOT AVAILABLE

	LS	LT	DIESEL	PREMIER
SAFETY AND SECURITY				
Airbags ¹ Includes frontal airbags for driver and front-passenger with Passenger Sensing System and airbag suppression; seat-mounted side-impact and knee airbags for driver and front-passenger; head-curtain airbags for front-to-rear outboard seating positions; seat-mounted side-impact airbags for outboard rear seating positions	●	●	●	●
Door locks – rear doors, child-security	●	●	●	●
Forward Collision Alert ² and Following Distance Indicator ²	–	–	–	○ ³
Lane Change Alert with Side Blind Zone Alert ²	–	○ ⁴	●	○ ³
Lane Keep Assist with Lane Departure Warning ²	–	–	–	○ ³
Low Speed Forward Automatic Braking ²	–	–	–	○ ³
1-month trial of Chevrolet Connected Services and OnStar Safety & Security Plan coverage ⁵	●	●	●	●
Rear Cross Traffic Alert ²	–	○ ⁴	●	○ ³
Rear Park Assist ²	–	○ ⁴	●	○ ³
Rear Vision Camera ²	●	●	●	●
Safety restraints – 3-point belts for all seating positions, front seat belt pre-tensioners and dual-mode retractors – LATCH (Lower Anchors and Tethers for Children), rear seats	●	●	●	●
Security system – content theft alarm, audible/visible, programmable	●	●	●	●
StabiliTrak – Electronic Stability Control System	●	●	●	●
Teen Driver ² – customizable vehicle features	●	●	●	●
Theft-deterrent system – electronic immobilizer	●	●	●	●
Traction control – electronic, full-function, all-speed	●	●	●	●
MECHANICAL				
Battery – with run-down protection	●	●	●	●
Brakes – power, 4-wheel disc with Duralife rotors – 4-wheel Anti-lock Braking System (ABS) with Brake Assist, cornering brake control and Hill Start Assist	●	●	●	●

	LS	LT	DIESEL	PREMIER
MECHANICAL (CONTINUED)				
Engine – ECOTEC 1.4L turbo DOHC I-4 with VVT and Direct Injection Horsepower – 153 @ 5600 rpm Torque – 177 lb.-ft. @ 2000-4000 rpm	●	●	–	●
– 1.6L turbo-diesel DOHC I-4 with VVT and Direct Injection Horsepower – 137 @ 3750 rpm Torque – 240 lb.-ft. @ 2000 rpm – Auto Stop/Start feature with override	–	–	●	–
Engine block heater	○	○	–	○
Oil pan heater	–	–	○	–
Exhaust system – aluminized stainless steel	●	●	●	●
Steering – power, electric, rack-and-pinion – power, electric, rack-and-pinion with reduced travel	●	–	–	–
Suspension – front MacPherson strut/rear compound crank – front MacPherson strut/rear compound crank with Z-link design	●	●	●	–
Transmission – 6-speed automatic with overdrive and Driver Shift Control – 9-speed automatic with overdrive and Driver Shift Control	–	○ ⁶	○ ^{6,7}	●
– 6-speed automatic with overdrive and Driver Shift Control	●	●	–	●
– 9-speed automatic with overdrive and Driver Shift Control	–	–	●	–
EXTERIOR				
Glass – solar-absorbing, tinted	●	●	●	●
Lighting – daytime running lamps – LED daytime running lamps – exterior automatic lamp control – halogen headlamps, twin reflectors – halogen headlamps, dual projector-style – IntelliBeam automatic high beam headlamps on/off – fog lamps – LED tail lamps	●	–	–	–
Mirrors – power remote control – power remote control, heated	●	–	–	–
Mouldings – Black beltline – bright beltline	●	○ ⁶	○ ^{6,7}	○ ⁶
Spoiler – rear liftgate mounted (Hatchback only) – rear deck-lid mounted (Sedan only)	●	●	●	●

	LS	LT	DIESEL	PREMIER
EXTERIOR (CONTINUED)				
Tires – P195/65R15 all-season [†] – P205/55R16 all-season [†] – P225/45R17 all-season [†] – P225/40R18 all-season [†] – tire sealant and inflator kit – compact spare	●	–	–	–
Wheels – 15" x 6.5" steel with bolt-on wheel cover – 16" x 6.5" aluminum – 17" x 7" aluminum – 17" x 7" aluminum – 18" x 7" machined-face aluminum	–	●	●	–
Windshield wipers – 2-speed with variable delay – rear with fixed delay (Hatchback only)	●	●	●	●
INTERIOR				
Cargo area – rear cargo cover (Hatchback only)	●	●	●	●
Climate control – electronic, single-zone, air conditioning – automatic, single-zone, climate control – air filtration system – humidity sensor – rear floor heating and cooling ducts	●	–	●	–
Console – front floor with armrest	●	●	●	●
Cruise control – electronic, steering wheel-mounted controls	–	●	●	●
Defogger – electric rear-window	●	●	●	●
Floor mats – front, carpeted – rear carpeted	●	●	●	●
Instrumentation – analogue gauges (includes speedometer, tachometer, coolant temperature and fuel gauges) – Driver Information Centre with monochromatic display (includes indicators for low fuel, oil life monitoring system, oil pressure, tire pressure monitoring system [excludes spare tire], average fuel consumption, fuel range, digital speedometer, average vehicle speed, dual trip odometers, timer, vehicle programmable features and message centre)	●	●	●	●

¹ A NOTE ON CHILD SAFETY: Always use seat belts and the correct child restraint for your child's age and size, even with airbags. Even in vehicles equipped with the Passenger Sensing System, children are safer when properly secured in a rear seat in the appropriate infant, child or booster seat. Never place a rear-facing infant restraint in the front seat of any vehicle equipped with an active frontal airbag. See your vehicle Owner's Manual and the child safety seat instructions for more safety information. ² Read the vehicle Owner's Manual for important feature limitations and information. ³ Included and only available with Premier Plus Package. ⁴ Included and only available with LT True North Edition or LT True North Plus Edition. ⁵ Includes navigation services, Remote Access Plan, plus a 3 GB or 1-month (whichever comes first) data plan trial from the vehicle delivery date. Data plan provided by AT&T or its local service provider. Requires vehicle electrical system (including battery), wireless service and GPS satellite signal to be available and operating for features to function properly. Visit onstar.ca for more details. Availability subject to change. ⁶ Included and only available with RS Package. ⁷ Available on Hatchback model only. [†] All-season tires may not satisfy winter tire requirements in all regions of the country. Tires specifically designed for severe winter conditions and marked with the "winter tire" symbol  may be required during certain months or in certain regions. Contact your Provincial, Municipal or local road authority for information regarding which tires are required in your particular area.


SPECIFICATIONS (CONTINUED)

● STANDARD ○ AVAILABLE – NOT AVAILABLE

	LS	LT	DIESEL	PREMIER
INTERIOR (CONTINUED)				
Lighting – dome, delayed entry/exit, theatre dimming, roof, rear courtesy and cargo area – dual front reading lamps	●	●	●	●
Locks – power, programmable with lock-out protection – remote keyless entry system with panic feature – Keyless Open and Start, includes passive entry with Push-Button Start	●	●	–	–
Mirror – rear-view, manual day/night	●	○ ¹	●	●
Power outlets – 12-volt auxiliary in front console and on rear of centre console	●	●	●	●
Steering column – tilt and telescopic adjustable	●	●	●	●
Steering wheel – with Bluetooth ^{®2} , cruise and audio system controls – leather-wrapped – heated	–	●	●	●
Sunroof – power, tilt/sliding glass panel with sunshade and express-open feature	–	○ ⁴	○ ³	○
Sunshades – LH and RH padded, vanity mirrors with extensions – LH and RH padded, illuminated vanity mirrors with extensions	●	●	●	–
Trunk – power release (Sedan only)	●	●	●	●
Vehicle starter system – remote	–	●	●	●
Windows – power, driver and front-passenger express-down and rear window lock-out features	●	●	●	●

	LS	LT	DIESEL	PREMIER
SEATS				
Reclining front bucket seats with adjustable head restraints – with cloth seating surfaces – with leatherette seating surfaces	●	●	●	–
Manual 6-way driver-seat adjuster	●	●	–	–
Manual 4-way front-passenger seat adjuster	–	–	○ ³	●
Power 8-way driver-seat adjuster	–	○ ¹	●	●
Heated front bucket seats	–	●	●	●
Seatbacks – rear-folding – rear, 60/40 split-folding with rear centre armrest	●	–	–	–
INFOTAINMENT				
Chevrolet Infotainment 3 System ⁵ Includes 7-in. diagonal colour touch-screen display with AM/FM stereo, auxiliary audio input jack, Bluetooth ^{®2} phone connectivity and wireless audio streaming, and Android Auto ^{™6} and Apple CarPlay ^{®7} compatibility	●	●	●	●
Built-in 4G LTE Wi-Fi [®] hotspot ⁸ ; includes 1-month or 3 GB data plan trial (whichever comes first) from vehicle delivery date	●	●	●	●
Chevrolet Connected Access ⁹ with 10 years of standard connectivity, which enables services such as Vehicle Diagnostics ¹⁰ , Dealer Maintenance Notification ¹⁰ and more	●	●	●	●
4-speaker audio system	●	–	–	–
6-speaker audio system	–	●	●	●
9-speaker Bose premium audio system	–	○ ⁴	○ ³	○ ¹¹
SiriusXM [®] Radio ¹² 3-month trial subscription	–	●	●	●
USB ports ¹³ – two, with auxiliary audio input jack – charge-only, rear	●	●	●	●

	LS	LT	DIESEL	PREMIER
AVAILABLE PACKAGES				
Convenience Package Includes Keyless Open and Start and power 8-way driver-seat adjuster	–	○ ¹	●	●
Driver Confidence Package Includes Lane Change Alert with Side Blind Zone Alert ¹⁵ , Rear Cross Traffic Alert ¹⁵ and Rear Park Assist ¹⁵	–	○ ¹	●	○ ¹⁴
LT True North Edition Includes Convenience Package and Driver Confidence Package	–	○	–	–
LT Plus Package Includes Convenience Package, Driver Confidence Package, and Sun and Sound Package	–	○	–	–
Diesel Plus Package Includes manual 4-way front-passenger seat adjuster, leather-wrapped heated steering wheel, and Sun and Sound Package (requires leatherette seating surfaces)	–	–	○	–
Premier Plus Package Includes IntelliBeam automatic high beam headlamps, Forward Collision Alert ¹⁵ , Following Distance Indicator ¹⁵ , Lane Keep Assist with Lane Departure Warning ¹⁵ , Low Speed Forward Automatic Braking ¹⁵ , Driver Confidence Package, and Sun and Sound Package	–	–	–	○
RS Package Includes fog lamps, sport body kit, Black bowtie emblems, Black beltline mouldings and RS ornamentation (includes deck-lid mounted spoiler on Sedan)	–	○ ¹⁶	○ ^{17,18}	○ ¹⁹
Sun and Sound Package Includes power sunroof and 9-speaker Bose premium audio system (illuminated vanity mirrors included on LT and Diesel)	–	○ ⁴	○ ³	○

¹ Included and only available with LT True North Edition or LT True North Plus Edition. ² Visit mychevrolet.ca to find out which phones are compatible with the vehicle. ³ Included and only available with Diesel Plus Package. ⁴ Included and only available with LT Plus Package. ⁵ Chevrolet Infotainment System functionality varies by model. Full functionality requires compatible Bluetooth and smartphone, and USB connectivity for some devices. Data plan rates may apply. ⁶ Vehicle user interface is a product of Google and its terms and privacy statements apply. Requires the Android Auto app on Google Play and an Android compatible smartphone running Android 5.0 Lollipop or higher. Data plan rates apply. ⁷ Vehicle user interface is a product of Apple and its terms and privacy statements apply. Requires compatible iPhone and data plan rates apply. ⁸ Visit onstar.ca for vehicle availability, coverage maps, details and system limitations. Services and connectivity vary by model and conditions as well as geographical and technical restrictions. 4G LTE service available in select markets. Requires active connected vehicle services and a data plan to access the vehicle's built-in Wi-Fi hotspot. Accessory Power must be active to use the Wi-Fi hotspot. Data plans provided by AT&T or its local service provider. Credit card is required for purchase. ⁹ Standard connectivity available only to original purchaser for 10 years. Connected Access services are subject to change. Does not include emergency or security services. Compatible 4G LTE wireless coverage required. See onstar.ca for details and limitations. ¹⁰ Capabilities vary by model. Message and data rates may apply. Requires contact method on file and enrollment to receive alerts. Not all issues will deliver alerts or notifications. See onstar.ca for details and limitations. ¹¹ Included and only available with Sun and Sound Package. ¹² Available in 10 Canadian provinces, 3 territories and the 48 contiguous United States. Subscription sold separately after trial period. If you decide to continue your service at the end of your trial subscription, the plan you choose will automatically renew and bill at then-current rates until you call 1-888-539-7474 to cancel. Other fees and taxes will apply. All fees and programming subject to change. See the Customer Agreement for complete terms at siriusxm.ca/terms. ¹³ Not compatible with all devices. ¹⁴ Included and only available with Premier Plus Package. ¹⁵ Read the vehicle Owner's Manual for important feature limitations and information. ¹⁶ Includes 17" aluminum wheels, P225/45R17 all-season[†] tires and compound crank rear suspension with Z-link design. ¹⁷ Available on Hatchback model only. ¹⁸ Includes 18" aluminum wheels, P225/40R18 all-season[†] tires and compound crank rear suspension with Z-link design. ¹⁹ Includes 18" aluminum wheels and P225/40R18 all-season[†] tires. [†] All-season tires may not satisfy winter tire requirements in all regions of the country. Tires specifically designed for severe winter conditions and marked with the "winter tire" symbol  may be required during certain months or in certain regions. Contact your Provincial, Municipal or local road authority for information regarding which tires are required in your particular area.

EXTERIOR COLOURS



G7C – Red Hot



GAN – Silver Ice Metallic



GAZ – Summit White



GD1 – Kinetic Blue Metallic^{1,2}



GE0 – Oakwood Metallic¹



GPJ – Cajun Red Tintcoat^{1,2}



G60 – Pacific Blue Metallic^{1,2,3}



G7Q – Nightfall Grey Metallic^{1,2,4}



G9K – Satin Steel Grey Metallic^{1,2,3}



GB8 – Mosaic Black Metallic^{1,3}



GBA – Black⁴



GMU – Pepperdust Metallic^{1,2,3}



GPA – Graphite Metallic^{1,2,4}

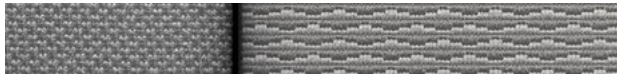
INTERIOR FABRICS



Jet Black Cloth with Jet Black Accents¹



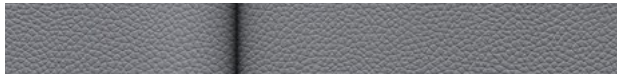
Galvanized Cloth with Jet Black Accents¹



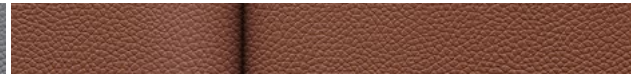
Jet Black Leatherette with Jet Black Accents^{2,3}



Galvanized Leatherette with Jet Black Accents^{2,3}



Umber Leatherette with Jet Black Accents²



WHEELS



15" steel with bolt-on wheel cover
(Standard on LS)



16" aluminum
(Standard on LT and Diesel)



17" aluminum
(Available on LT with RS Package)



17" aluminum
(Standard on Premier)



18" aluminum
(Available on Diesel Hatchback
and Premier with RS Package)

¹ Standard on LS, LT and Diesel. ² Standard on Premier. ³ Included and only available on Diesel with Diesel True North Edition.



COMPLETE CARE

Experience Chevrolet Complete Care, a comprehensive coverage, warranty and protection program that comes standard with every new 2019 Chevrolet Cruze leased or purchased in Canada. Simply, it is designed around you, to make it easy to keep your Chevrolet like new – and give you the confidence you deserve when you need it most.

YOUR COMPREHENSIVE OWNER BENEFIT PROGRAM.

2-year/48,000 km¹ Complimentary Oil Changes²

3-year/60,000 km¹ Base Warranty Coverage³

5-year/100,000 km¹ Powertrain Component Warranty Coverage³

5-year/100,000 km¹ Courtesy Transportation⁴

5-year/100,000 km¹ 24/7 Roadside Assistance⁴

6-year/160,000 km¹ Sheet Metal rust-through perforation coverage³

8-year/130,000 km¹ coverage³ on specified major emission components.

1-month trial of Chevrolet Connected Services and OnStar Safety & Security Plan coverage⁵

Chevrolet Connected Access⁶ with 10 years of standard connectivity, which enables services such as Vehicle Diagnostics⁷, Dealer Maintenance Notification⁷ and more.

OTHER OWNERSHIP PRIVILEGES AND PROGRAMS⁸

- Chevrolet Protection Plan – the only extended service plan backed by the resources and commitment of General Motors. The Chevrolet Protection Plan may be purchased at the time of sale or subsequently during the Base Warranty Coverage period⁹
- Chevrolet Certified Service – to help your Chevrolet vehicle live up to its performance promise, Chevrolet Certified Service – found exclusively at your Chevrolet dealer – is there. With all the engineering excellence in your vehicle, GM-trained technicians have the expertise to care for all of it.
- Chevrolet Owner Centre – as an owner, take advantage of the Chevrolet Owner Centre. This online owner's destination gives you

access to contests, current offers and the latest driving and maintenance tips. Find out more at mychevrolet.ca.

TO HELP YOU PURCHASE OR LEASE A NEW VEHICLE

- Purchase Financing and Leasing – on-the-spot financing; see dealer for full details¹⁰
- GM Student Bonus Program – students or recent graduates of high school, college or university¹⁰ may be entitled to receive a Student Bonus Vehicle Redemption Allowance of \$500 or \$750⁸ (tax inclusive) (purchased vehicle dependant) to use towards the purchase, lease or finance of one eligible new Chevrolet vehicle.
- GM Card[®] – Cardholders may redeem Earnings towards the total purchase price or lease down payment of an eligible new Chevrolet car, truck or crossover. Restrictions and limitations apply. For full program details, visit gmcards.ca.

INFORMATION RESOURCES You can find more information about these programs from your Chevrolet dealer, or at these information centres:

- The Chevrolet website at chevrolet.ca
- The GM Customer Care Centre at 1-800-GM-DRIVE (1-800-463-7483 or 1-800-263-3830 for TDD users).

A WORD ABOUT THIS BROCHURE Some of the equipment shown or described throughout this brochure may be available at extra cost. We have tried to make this brochure comprehensive and factual. We reserve the right, however, to make changes at any time, without notice, in prices, colours, materials, equipment, specifications, models and availability. Specifications, dimensions, measurements, ratings and other numbers in this brochure and other printed materials provided at the dealership or affixed to vehicles are approximates based upon design and engineering drawings and prototypes and laboratory tests. Your vehicle may differ due to variations in manufacture and equipment. Since some information may have been updated since the time of printing, please check with your Chevrolet dealer for complete details. General Motors of Canada Company reserves the right to lengthen or shorten the model year for any product, for any reason, or to start and end model years at different times. Certain vehicle features may lose their usefulness over time due to obsolescence from technological changes. Unless otherwise noted, all claims based on the latest available competitive information. Excludes other GM vehicles.

ENGINES Chevrolet products are equipped with engines produced by GM Global Propulsion Systems or other suppliers to GM worldwide. The engines in Chevrolet products may also be used in other GM makes and models.

ASSEMBLY Chevrolet vehicles and their components are assembled or produced by different operating units of General Motors, its subsidiaries or suppliers to GM worldwide. We sometimes find it necessary to produce Chevrolet vehicles with different or differently sourced components than originally scheduled. Since some options may be unavailable when your vehicle is assembled, we suggest you verify that your vehicle includes the equipment you ordered and that, if there were changes, they are acceptable to you.

TRADEMARKS The marks appearing in this brochure including, but not limited to, General Motors, GM, Chevrolet, the Chevrolet emblem, Cruze and their respective logos, emblems, slogans and vehicle model names and body designs; and other marks such as Duralife, ECOTEC, Find New Roads, IntelliBeam, myChevrolet, OnStar, the OnStar emblem and StabiliTrak are trademarks of General Motors LLC and/or General Motors of Canada Company, its subsidiaries, affiliates or licensors. Apple, Apple CarPlay and iPhone are trademarks of Apple Inc., registered in the U.S. and other countries. Bluetooth is a registered trademark of Bluetooth SIG, Inc. Bose is a registered trademark of the Bose Corporation. Facebook is a registered trademark of Facebook Inc. © 2018 Sirius XM Canada Inc. "SiriusXM," the SiriusXM logo, channel names and logos are registered trademarks of Sirius XM Radio Inc. and are used under license. All rights reserved. Twitter is a trademark of Twitter, Inc. YouTube is a registered trademark and Android, Android Auto and Google Play are trademarks of Google LLC. Wi-Fi is a registered trademark of Wi-Fi Alliance.

COPYRIGHT ©Copyright 2018 General Motors of Canada Company. All rights reserved. All text, images, graphics, and other materials in this brochure are subject to the copyright and other intellectual property rights of General Motors LLC and/or General Motors of Canada Company. These materials may not be reproduced, distributed or modified without the express written permission of General Motors LLC and/or General Motors of Canada Company. December 2018.

¹ Whichever comes first. ² Limit of four complimentary Lube-Oil-Filter services in total. Fluid top-offs, inspections, tire rotations, wheel alignments and balancing, etc., are not covered. Conditions apply. See dealer for details. ³ Conditions apply. See Warranty Booklet for details. ⁴ Conditions apply. See Owner's Manual for details. ⁵ Includes navigation services, Remote Access Plan, plus a 3 GB or 1-month (whichever comes first) data plan trial from the vehicle delivery date. Data plan provided by AT&T or its local service provider. Requires vehicle electrical system (including battery), wireless service and GPS satellite signal to be available and operating for features to function properly. Visit onstar.ca for more details. Availability subject to change. ⁶ Standard connectivity available only to original purchaser for 10 years. Connected Access services are subject to change. Does not include emergency or security services. Compatible 4G LTE wireless coverage required. See onstar.ca for details and limitations. ⁷ Capabilities vary by model. Message and data rates may apply. Requires contact method on file and enrollment to receive alerts. Not all issues will deliver alerts or notifications. See onstar.ca for details and limitations. ⁸ Conditions apply. ⁹ Please work with your dealer to select the plan that is suitable for your driving needs. Dealers are free to set their own prices. ¹⁰ Subject to eligibility.

FIND NEW ROADS™

CHEVROLET.CA



TWITTER.COM/CHEVROLETCANADA



YOUTUBE.COM/CHEVROLETCANADA



FACEBOOK.COM/CHEVROLETCANADA



INSTAGRAM.COM/CHEVROLETCANADA