



2019 BUICK

ENVISION



Envision Premium II shown in Galaxy Silver Metallic with available features.





AN SUV THAT KNOWS HOW MUCH EVERY DRIVE MATTERS

The Envision just seems to understand everything you need. With its responsive performance, intelligent innovations and an impeccably tailored interior hushed by QuietTuning™ technology, Envision is so in sync with your needs, you'll wonder how you ever lived without it.

DESIGNED TO REFLECT A HIGHER LEVEL OF REFINEMENT

A glance at its sculpted lines confirms that the Envision is crafted to an exceptional degree of refinement. From its bold grille to LED-accented headlamps and low-profile LED-enhanced tail lamps, the Envision design is elegant, yet athletic.

Dealer-installed accessory wheel shown (far right).
Use only GM-approved tire and wheel combinations.
See buick.ca/accessories.html for important tire and wheel information, or see your dealer.





Envision Premium II shown in Galaxy Silver Metallic with available features.



Envision Essence interior shown in Light Neutral with Ebony accents and available features.



THINK OF IT
AS A DAY SPA
YOU VISIT
EVERY DAY

Inspiration for Envision's interior design came from the places you go to relax in style: boutique hotels, day spas and other quiet retreats. With its modern design, beautiful finishes and materials and Moon White ambient lighting, Envision is your sanctuary.



SOOTHE YOUR SENSES Envision comes standard with heated front seats that are eight-way power adjustable and include power lumbar support. An available heated steering wheel warms your hands. Looking to stay cool instead? Available cooled front seats are offered on Envision, too. Clearly, there is more to Envision's available French stitched, perforated leather-appointed seating than meets the eye.

REAR SEATING THAT'S FIRST CLASS Your rear passengers can also sit back and relax thanks to Envision's sliding second-row seating with adjustable recline. Available tri-zone HVAC automatic climate control allows everyone to define comfort on their own terms, while having access to power ports¹ for smartphones and other personal devices.

¹Not compatible with all devices.

Envision Premium II shown in Galaxy Silver Metallic with available features.





WELCOME TO YOUR QUIET ZONE

QuietTuning technology with Active Noise Cancellation uses triple door seals, acoustic-laminated glass in the windshield and front windows, specific suspension tuning and many other measures to help reduce, block and absorb unwanted noise. So you can enjoy conversations with your passengers, quiet time for yourself or fully appreciate the audiophile-calibre sound from the available Bose® premium audio system with seven speakers and amplifier.

Envision Premium II shown in Galaxy Silver Metallic with available features.



VERSATILITY HAS FOUND ITS STYLE

Envision makes whatever you do look effortless.

KEYLESS ENTRY Never fumble for your keys again. The driver's door unlocks with the keyless fob in your pocket or purse.



60/40 REAR SEATS Envision gives you the flexibility to carry combinations of people and cargo. Transforming from a five-person SUV is easy thanks to 60/40 split rear seats that fold flat to expand cargo space.

HANDS-FREE POWER LIFTGATE Got your hands full? No problem. Simply kick your foot beneath the sensor on the left side of the rear bumper. With the keyless entry fob in your possession, the liftgate will open or close.

Envision Premium II interior shown in Dark Galvanized with Ebony accents and available features.





UPGRADE YOUR SENSORY EXPERIENCE

Settle into Envision and you'll feel an instant connection. That feeling will be enhanced when you discover all of the features at your service, from an available Head-Up Display (HUD) that projects critical information such as your speed onto the windshield to an available in-vehicle ionization system that helps keep the air in your cabin fresher by reducing pollen, dust and debris.



AN SUV THAT FEELS LIKE A PERFORMANCE SEDAN

Press the Start button and a spirited response comes from one of two sources: the standard 2.5L engine with 197 hp and 192 lb.-ft. of torque or the available 2.0L Turbo engine with 252 hp and 295 lb.-ft. of torque. With the available 2.0L Turbo engine, a new 9-speed automatic transmission ensures power flows smoothly to the road.

Envision Premium II shown in Galaxy Silver Metallic with available features.



INTELLIGENT ALL-WHEEL DRIVE To make the performance of Envision even more precise, there's intelligent All-Wheel Drive with available active twin clutch. It automatically adjusts torque to each wheel to optimize traction and is designed to respond before a slip occurs. So whether it's a quick trip or a long journey, you'll drive with added confidence.

HIPER STRUT FRONT SUSPENSION Turn the steering wheel, and you'll feel the rewarding effects of the available HiPer Strut front suspension. It provides Envision with responsive steering and cornering while it helps dampen road noise and vibration. And Envision's tight turning radius makes for nimble manoeuvres and easy parking.



SEE WHAT SAFETY TECHNOLOGY CAN DO FOR YOU

Envision uses an available combination of cameras, radars and sensors embedded in the vehicle to help you identify potential hazards around the vehicle.

SURROUND VISION During low-speed manoeuvring, this available system provides a virtual bird's-eye view of what's around your vehicle on the infotainment screen. Four cameras help reduce blind spots as you slowly navigate even the tightest spaces with clarity and confidence.

AUTOMATIC PARKING ASSIST This available system helps you parallel and perpendicular park by automatically steering the vehicle into a detected parking space while you follow text commands on the Driver Information Centre display, select gears and do all the braking and acceleration.

REAR VISION CAMERA To help you better navigate while backing up, the Rear Vision Camera shows you grid lines and live images of what's behind you on the 8-inch diagonal infotainment screen.

Safety or driver assistance features are no substitute for the driver's responsibility to operate the vehicle in a safe manner. The driver should remain attentive to traffic, surroundings and road conditions at all times. Visibility, weather and road conditions may affect feature performance. Read the vehicle Owner's Manual for more important feature limitations and information.



Envision Premium II shown in Galaxy Silver Metallic with available features.



EVEN THE SEAT IS ON HIGH ALERT

Imagine a driver's seat that uses advanced technologies to warn you of potential hazards around your vehicle. That's one of the available safety features on the Envision.

LANE CHANGE ALERT WITH SIDE BLIND ZONE ALERT¹ Available Lane Change Alert with Side Blind Zone Alert can provide side-mirror alerts to help you avoid detected vehicles moving in, or rapidly approaching, your side blind zone during a lane-change manoeuvre.

LANE KEEP ASSIST WITH LANE DEPARTURE WARNING Available Lane Keep Assist with Lane Departure Warning can provide gentle steering wheel turns, and if necessary, Lane Departure Warning alerts to help you avoid crashes due to unintentionally drifting out of your lane when you are not actively steering and your turn signal is not activated.

REAR CROSS TRAFFIC ALERT When in Reverse, available Rear Cross Traffic Alert provides alerts to help you avoid crashing into approaching detected left or right cross traffic, such as when you're backing out of your driveway or a crowded parking space.

SAFETY ALERT SEAT When a collision-avoidance technology such as available Rear Cross Traffic Alert triggers an alert, the available Safety Alert Seat issues a warning of its own. The left and/or right side of the driver seat cushion gently vibrate to signal the direction of the approaching hazard. For some types of alerts, both sides of the seat vibrate at the same time, for example, if the object is in front of the vehicle.

FORWARD COLLISION ALERT If this available system detects that a front-end collision situation is imminent while following a detected vehicle, the system alerts you to a potential crash. It also alerts you if you are following a detected vehicle much too closely.

FORWARD AUTOMATIC BRAKING² If this available system detects that a front-end collision situation is imminent while following a detected vehicle and you have not applied the brakes, the system can automatically apply the brakes to help reduce the collision's severity. The system may even help avoid the collision at very low speeds.

Safety or driver assistance features are no substitute for the driver's responsibility to operate the vehicle in a safe manner. The driver should remain attentive to traffic, surroundings and road conditions at all times. Visibility, weather and road conditions may affect feature performance. Read the vehicle Owner's Manual for more important feature limitations and information.

¹Before making a lane change, always check the exterior and interior rear-view mirrors, look over your shoulder for vehicles and hazards and start the turn signal. ²The Forward Automatic Braking feature may help reduce crash damage under certain conditions discussed in the Owner's Manual. Never rely on this feature to brake the vehicle.

TECHNOLOGY THAT KEEPS YOU CONNECTED

Envision helps keep you seamlessly connected and entertained with its suite of available built-in technologies.

NEW BUICK CONNECTED SERVICES With a range of available plans, Buick Connected Services seamlessly links your digital life to your vehicle. Starting with Connected Access,¹ you'll get standard connectivity that enables services in your vehicle including Vehicle Diagnostics² and Dealer Maintenance Notifications,² to help you stay on top of certain aspects of your vehicle's health. Add the Remote Access Plan³ to start and stop or lock and unlock⁴ a properly equipped vehicle via the available myBuick mobile app.⁵ You can add a monthly data plan to your account at any time that allows you to stay connected on the go with your available built-in 4G LTE Wi-Fi[®] hotspot⁶ (data plan required).

myBUICK MOBILE APP⁵ Powerful and easy to use, the available myBuick mobile app lets you remotely connect to your vehicle from almost anywhere when you subscribe to paid Buick Connected Services. When properly equipped, you can unlock and lock your doors, remote-start or -stop your engine⁴ and get real-time diagnostics that check your vehicle's fuel status, tire pressure,⁷ mileage and more. The myBuick mobile app is also Apple Watch[®]-compatible, so you can remote-start or -stop the engine, lock and unlock the doors, honk the horn and flash the lights—all right from your wrist.



APPLE CARPLAY[™] COMPATIBILITY⁸ Just plug in your compatible iPhone[®] and you'll have easy access to your contacts, maps and apps that you're familiar with on your vehicle's 8-inch diagonal colour touch-screen. You can also have Siri[®] send and read your text messages, and you can listen to all of your content from iTunes,[®] Apple Music[™] and other compatible audio apps.

¹Limitations apply. Not transferable. Standard connectivity available to original purchaser for 10 years from the vehicle delivery date for model year 2019 and newer Buick vehicles. See onstar.ca for details and further plan limitations. Connected Access does not include emergency or security services. Availability of Connected Access and any of its services are dependant on compatible 4G LTE wireless networks and are also subject to change. ²Capabilities vary by model and service plan. Visit onstar.ca for vehicle availability. Message and data rates may apply. Requires active service, email address on file and enrolment in Vehicle Diagnostics. Not all issues will deliver alerts. On-Demand Diagnostics requires a paid service plan. ³Diagnostic capabilities vary by model and do not cover all vehicle conditions. Additional message and data rates may apply. Requires email address on file and enrolment in Vehicle Diagnostics. Remote Access Plan does not include emergency or security services. Services are subject to user terms and limitations. Visit onstar.ca for more details. ⁴Requires subscription to Remote Access Plan or Premium Access Plan. Services are subject to user terms and limitations and vary by vehicle model. Unlock feature requires automatic locks.



ANDROID AUTO™ COMPATIBILITY⁹ Android Auto makes it easy to use the touch-screen display in your Envision to access your phone, texts and music. And with Google Maps, you can get voice-guided navigation, live traffic information, lane guidance and more while keeping your hands on the wheel and your eyes on the road.

BUILT-IN 4G LTE WI-FI® HOTSPOT⁶ An available built-in 4G LTE Wi-Fi® hotspot (data plan required) supports up to seven devices from up to 15 metres away from the vehicle. So your passengers can use their favourite apps to stream movies, watch TV, play games, listen to music and check social media on the go.

Remote start requires GM factory-installed and enabled remote-start system. Visit onstar.ca for more details. ⁵Available on select Apple® and Android™ devices. Service availability, features and functionality are subject to limitations and vary by vehicle, device and the plan in which you are enrolled. Device data connection required. Visit onstar.ca for more details. ⁶Visit onstar.ca for vehicle availability, coverage maps, details and system limitations. Services and connectivity vary by model and conditions as well as geographical and technical restrictions. 4G LTE service available in select markets. Requires active connected vehicle services and a data plan to access the vehicle's built-in Wi-Fi® hotspot. Accessory Power must be active to use the Wi-Fi® hotspot. Data plans provided by AT&T® or its local service provider. Credit card is required for purchase. ⁷Tire Pressure Monitoring System required (excludes spare). ⁸Vehicle user interface is a product of Apple® and its terms and privacy statements apply. Requires compatible iPhone® and data plan rates apply. Apple CarPlay is a trademark of Apple, Inc. Siri, iPhone and iTunes are trademarks of Apple, Inc., registered in the U.S. and other countries. ⁹Vehicle user interface is a product of Google™ and its terms and privacy statements apply. Requires the Android Auto app on Google Play and an Android-compatible smartphone running Android 5.0 Lollipop or higher. Data plan rates apply. Android Auto is a trademark of Google LLC.





ONSTAR SAFETY AND SECURITY



As you travel with the ones you care about most, available OnStar^{®1} is with you to empower every moment. With a paid OnStar Safety & Security² Plan, you can have a 24/7 lifeline to specially trained Advisors, ready to help if you've been in a crash, your vehicle's been stolen, you're lost or you need Roadside Assistance.

EMERGENCY HELP WHEN IT MATTERS MOST Using built-in sensors, available Automatic Crash Response is designed to connect you to an Emergency Medical Dispatch-Certified Advisor³ immediately after a crash to help get you the care you need, even if you can't ask for it. Using Injury Severity Prediction technology, these specially trained Advisors can notify first responders about the likelihood of serious injury so they can provide help right away. You can feel confident knowing you have a team, available 24/7, to help get you the assistance you need.

SECURITY YOU CAN COUNT ON If your vehicle is stolen, OnStar Advisors are ready to take action with available Stolen Vehicle Assistance. Once a vehicle is reported stolen, OnStar Advisors can work with the police to help attempt to recover it. They can slow the vehicle if conditions are safe and even prevent it from being restarted in certain circumstances. And with available Theft Alarm Notification,⁴ if your vehicle alarm sounds, we can let you know via text, email or a phone call. One simple call puts a team into action to attempt to recover your vehicle quickly and safely in cooperation with local law enforcement.

The OnStar Safety & Security Plan and Connected Services have changed significantly. While many of the offered services are the same, available plans and pricing are different. Visit onstar.ca to review all the details and limitations.

¹Visit onstar.ca for coverage maps, details and system limitations. Services vary by model, service plan and conditions as well as geographical and technical restrictions. Service plan required. ²OnStar acts as a link to existing emergency service providers. Not all vehicles may transmit all crash data. Roadside service provided by Allstate Roadside Services, and limitations and restrictions apply. Stolen Vehicle Assistance requires armed factory-installed theft-deterrent system and selection of notification communication preference(s). These services are intended to assist with vehicle recovery and do not prevent theft or protect against damage or loss. Additional messaging and data rates may apply. Services are subject to user terms and limitations, and vary by vehicle model. Visit onstar.ca for more details. ³OnStar Emergency Advisors are certified by the International Academies of Emergency Dispatch. ⁴Services are subject to user terms and other limitations and vary by vehicle model. Requires an armed GM factory-installed theft-deterrent system, a subscription to OnStar Security Plan, OnStar Guidance Plan or OnStar Safety & Security Plan, and the selection of notification communication preference(s). Additional messaging and data rates may apply. Visit onstar.ca for more details.

FEATURES				
● STANDARD ○ AVAILABLE – NOT AVAILABLE	PREFERRED	ESSENCE	PREMIUM	PREMIUM II
HANDS-FREE POWER LIFTGATE	●	●	●	●
KEYLESS OPEN AND START	●	●	●	●
HEATED FRONT SEATS	●	●	●	●
REAR VISION CAMERA	●	●	●	●
REAR PARK ASSIST	●	●	●	●
APPLE CARPLAY™ COMPATIBILITY ¹	●	●	●	●
ANDROID AUTO™ COMPATIBILITY ²	●	●	●	●
BUILT-IN 4G LTE WI-FI® HOTSPOT ³ (Data Plan Required)	○	○	○	○
PANORAMIC SUNROOF	○	○	○	○
HEATED STEERING WHEEL	—	●	●	●
PERFORATED, LEATHER-APPOINTED SEATING	—	●	●	●
HEATED REAR OUTBOARD SEATS	—	●	●	●
TRI-ZONE CLIMATE CONTROL	—	●	●	●
DRIVER MEMORY SETTINGS	—	●	●	●
LANE CHANGE ALERT WITH SIDE BLIND ZONE ALERT ⁴	—	●	●	●
IN-VEHICLE AIR IONIZER	—	—	●	●
FRONT RAINSENSE WIPERS	—	—	●	●
SAFETY ALERT SEAT	—	—	●	●
LANE KEEP ASSIST WITH LANE DEPARTURE WARNING	—	—	●	●
FORWARD COLLISION ALERT	—	—	●	●
8" DIAGONAL MULTICOLOUR DRIVER INFORMATION CENTRE	—	—	●	●
ALL-WHEEL DRIVE	●	●	—	—
INTELLIGENT ALL-WHEEL DRIVE WITH ACTIVE TWIN CLUTCH	—	—	●	●
WIRELESS CHARGING ⁵	—	—	—	●
COOLED FRONT SEATS	—	—	—	●
AUTOMATIC PARKING ASSIST (Includes Front and Rear Park Assist)	—	—	—	●
HEAD-UP DISPLAY	—	—	—	●
SURROUND VISION ⁶	—	—	—	○

PACKAGES

● STANDARD ○ AVAILABLE – NOT AVAILABLE

	PREFERRED	ESSENCE	PREMIUM	PREMIUM II
DRIVER CONFIDENCE PACKAGE: Includes Adaptive Cruise Control–Advanced, ⁷ Surround Vision and Forward Automatic Braking ⁸	—	—	—	○
BUICK INTERIOR PROTECTION PACKAGE: Includes the following dealer-installed accessories: front and rear all-weather floor mats and all-weather cargo mat (not available with Interior Luxury Package or Road Trip Package)	○	○	○	○
CARGO PACKAGE: Includes the following dealer-installed accessories: cargo shade and cargo net	○	○	○	○
INTERIOR LUXURY PACKAGE: Includes the following dealer-installed accessories: illuminated front-door sill plates and premium carpeted floor mats (not available with Buick Interior Protection Package)	○	○	○	○
ACTIVE PACKAGE: Includes the following dealer-installed accessories: Trailing Package ⁹ and integrated cargo liner	○	○	○	○
ROAD TRIP PACKAGE: Includes the following dealer-installed accessories: roof rack crossrails and all-weather floor mats (not available with Buick Interior Protection Package)	—	○	○	○
TRAILERING PACKAGE:⁹ Includes the following dealer-installed accessories: trailer hitch and wiring harness (included and only available with Active Package)	○	○	○	○

DIMENSIONS, MM (INCHES)

CAPACITIES

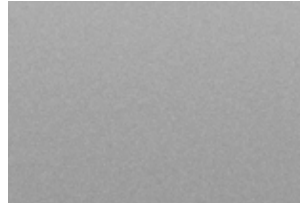
Wheelbase	2751 (108.3)	Standard engine on Preferred and Essence	Standard engine on Premium and Premium II
Overall length	4666 (183.7)	Engine Type	2.5L DOHC SIDI with VVT
Body width	1839 (72.4)	Horsepower	197
Overall height	1697 (66.8)	Torque	192 lb.-ft.
Track width, front/rear	1575/1575 (62.0/62.0)	Estimated Fuel Consumption L/100 km (mpg) ¹⁰	11.1 (25) city/8.6 (33) hwy AWD
Head room, front/rear	1016/978 (40.0/38.5)	Fuel Tank, L (imp. gal.) (approx.)	65.5 (14.4)
Shoulder room, front/rear	1448/1417 (57.0/55.8)	Cargo Capacity, ¹¹ L (cu. ft.)	With seats up: 761.8 (26.9) Seats down: 1622.7 (57.3)
Hip room, front/rear	1382/1349 (54.4/53.1)		2.0L Turbo DOHC SIDI with VVT
Leg room, front/rear	1039/952 (40.9/37.5)		252
			295 lb.-ft.
			11.7 (24) city/9.4 (30) hwy AWD
			65.5 (14.4)
			65.5 (14.4)

¹Vehicle user interface is a product of Apple® and its terms and privacy statements apply. Requires compatible iPhone® and data plan rates apply. Apple CarPlay is a trademark of Apple, Inc. Siri, iPhone and iTunes are trademarks of Apple, Inc., registered in the U.S. and other countries. ²Vehicle user interface is a product of Google™ and its terms and privacy statements apply. Requires the Android Auto app on Google Play and an Android™-compatible smartphone running Android 5.0 Lollipop or higher. Data plan rates apply. Android Auto is a trademark of Google LLC. ³Visit onstar.ca for vehicle availability, coverage maps, details and system limitations. Services and connectivity vary by model and conditions as well as geographical and technical restrictions. 4G LTE service available in select markets. Requires active connected vehicle services and a data plan to access the vehicle's built-in Wi-Fi hotspot. Accessory Power must be active to use the Wi-Fi hotspot. Data plans provided by AT&T® or its local service provider. Credit card is required for purchase. ⁴Before making a lane change, always check the exterior and interior rear-view mirrors, look over your shoulder for vehicles and hazards and start the turn signal. ⁵The vehicle must be on or Retained Accessory Power must be active. Remove all objects from the charging pad. Place the compatible mobile device face up on the charging symbol on the charging pad. Move the device slowly until the battery charging symbol displays on the touch-screen, indicating the device is charging. See your Infotainment System Owner's Manual. ⁶Requires Driver Confidence Package. ⁷Adaptive Cruise Control–Advanced is no substitute for the driver's personal responsibility to operate the vehicle in a safe manner. The driver needs to remain attentive to traffic and road conditions and provide the steering, braking or other inputs necessary to retain control of the vehicle. The Front Automatic Braking feature may help reduce crash damage under certain conditions discussed in the Owner's Manual. Never rely on this feature to brake the vehicle. ⁸The Forward Automatic Braking feature may help reduce crash damage under certain conditions discussed in the Owner's Manual. Never rely on this feature to brake the vehicle. ⁹Before you buy a vehicle or use it for trailering, carefully review the trailering section of the Owner's Manual. The weight of passengers, cargo and options or accessories may reduce the amount you can tow. ¹⁰Estimated fuel-consumption ratings based on GM testing in accordance with Government of Canada approved test methods. Refer to vehicles.nrcan.gc.ca for details. Your actual fuel consumption may vary. ¹¹Cargo and load capacity limited by weight and distribution.

EXTERIOR COLOURS



Summit White



Galaxy Silver Metallic¹



Chili Red Metallic¹



Satin Steel Metallic¹



Ebony Twilight Metallic¹



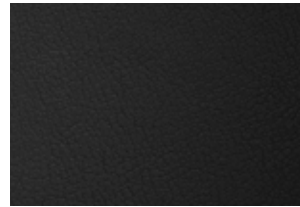
Bronze Alloy Metallic¹

¹Additional charge; premium paint.

INTERIOR COLOURS



Light Neutral Cloth²
or Perforated
Leather-Appointed Seating³



Ebony Perforated
Leather-Appointed Seating³



Dark Galvanized Perforated
Leather-Appointed Seating^{3,4}

Ebony accents included with all interior colours.

²Standard on Preferred trim. ³Not available on Preferred trim.

⁴Not available with Chili Red Metallic or Bronze Alloy Metallic.

WHEELS



18" 10-Spoke Aluminum
With Blade Silver Painted
Finish
Standard on Preferred.



18" 10-Spoke Aluminum
With Polished Finish
Standard on Essence.



19" 12-Spoke Aluminum
With Manoojian Silver
Finish
Standard on Premium and
Premium II.



19" 10-Spoke Aluminum,
Bright Machine-Faced
With Midnight Silver
Painted Finish
Dealer-installed accessory.⁵

⁵Use only GM-approved tire and wheel combinations. See buick.ca/accessories.html for important tire and wheel information, or see your dealer.



IMPORTANT WORDS

BUICK OWNERSHIP: IT'S A GOOD FEELING. Our commitment to you includes:

- 2-year/48,000 km Lube-Oil-Filter Maintenance¹
- 4-year/80,000 km Base Warranty Coverage²
- 6-year/110,000 km Powertrain Component Warranty Coverage² with \$0 deductible on repairs; warranty is fully transferable at no charge
- 6-year/110,000 km Courtesy Transportation²
- 6-year/110,000 km 24/7 Roadside Assistance²
- 6-year/unlimited km sheet metal rust-through perforation coverage²
- 8-year/130,000 km coverage on catalytic converters and Powertrain Control Modules (PCMs)²

¹Whichever comes first. Limit of four complimentary Lube-Oil-Filter services in total. Fluid top-offs, inspections, tire rotations, wheel alignments and balancing, etc., are not covered. Conditions and limitations apply. See your dealer for details.

²Whichever comes first. Conditions and limitations apply. See your dealer for details.

OTHER OWNERSHIP PRIVILEGES AND PROGRAMS:³

- **BUICK PROTECTION PLAN** – The only extended service plan backed by the resources and commitment of General Motors; Buick Protection Plan may be purchased at the time of sale or subsequently during the Base Warranty coverage period.
- **BUICK CERTIFIED SERVICE** – With Buick-certified technicians and Buick-approved parts, nobody knows your Buick vehicle better.
- **CERTIFIED SERVICE MAINTENANCE PLAN** – The only maintenance plan designed specifically for buyers of Buick vehicles and backed by the resources and commitment of General Motors. Buick Maintenance Plans may be purchased at the time of sale or on vehicles up to 3 model years old and with 60,000 km or less on the odometer.
- **BUICK OWNER CENTRE** – As an owner, take advantage of the Buick Owner Centre. This online owner's destination gives you access to contests, current offers and helpful resources such as Owner's Manuals. Find out more at buickowner.ca.

³Conditions and limitations apply.

TO HELP YOU PURCHASE OR LEASE YOUR NEW BUICK:

- **PURCHASE FINANCING AND LEASING** – On-the-spot financing. See dealer for full details.⁴
- **GM STUDENT BONUS PROGRAM** – Students or recent graduates of high school, college or university⁵ may be entitled to receive a Student Bonus vehicle redemption allowance of \$500 or \$750⁶ (tax inclusive) (purchased vehicle dependant) to use toward the purchase, lease or finance of one eligible new Buick vehicle.
- **GM CARD** – Cardholders may redeem Earnings toward the total purchase price or lease down payment of an eligible new Chevrolet, Buick, GMC or Cadillac. Restrictions and limitations apply.⁶ For full program details, please visit gmc card.ca.

⁴Subject to eligibility. ⁵Conditions and limitations apply. ⁶Program subject to change.

INFORMATION RESOURCES: You can find more information about these programs from your GM dealer, or at these information centres:

- The Buick website at buick.ca.
- The GM Customer Care Centre at 1-800-GM-DRIVE (1-800-463-7483 or 1-800-263-3830 for TDD users).

A WORD ABOUT THIS BROCHURE Some of the equipment shown or described throughout this brochure may be available at extra cost. We have tried to make this brochure comprehensive and factual. We reserve the right, however, to make changes at any time without notice, in prices, colours, materials, equipment, specifications, models and availability. Specifications, dimensions, measurements, ratings and other numbers in this brochure and other printed materials provided at the dealership or affixed to vehicles are approximates based upon design and engineering drawings and prototypes and laboratory tests. Your vehicle may differ due to variations in manufacture and equipment. Since some information may have been adapted since the time of printing, please check with your GM dealer for complete details. General Motors of Canada Company reserves the right to lengthen or shorten the model year for any product, for any reason, or to start and end model years at different times.

A WORD ABOUT ASSEMBLY GM vehicles are equipped with engines and components produced and assembled by different operating units of General Motors, its subsidiaries and suppliers, and these engines and components may change or be obtained from different sources from time to time. All such engines and components are approved for use in GM vehicles. Certain equipment ordered may be unavailable at the time of assembly and we suggest that you verify that your vehicle includes the equipment you ordered, or if there are changes, that they are acceptable to you.

TRADEMARKS The marks appearing in this brochure, including, but not limited to: General Motors, GM, Buick, the Buick logo, Envision and their respective logos, emblems, slogans and vehicle model names and body designs; and other marks such as StabiliTrak, are trademarks of General Motors and/or General Motors of Canada Company, its subsidiaries, affiliates or licensors. SiriusXM Canada, Inc., "SiriusXM," the SiriusXM logo, channel names and logos are trademarks of SiriusXM Radio, Inc., and are used under licence. The Facebook logo is a trademark of Facebook, Inc. The Twitter logo is a trademark of Twitter, Inc. The YouTube logo, Android Auto, Google Maps and Google Play are trademarks of Google LLC. Apple CarPlay, iTunes, Apple Music, Apple Watch, Siri and iPhone are registered trademarks of Apple, Inc., registered in the U.S. and other countries. The Instagram logo is a trademark of Instagram, LLC. Bose and Centerpoint are registered trademarks of Bose Corporation.

COPYRIGHT ©2018 General Motors of Canada Company. All rights reserved. All text, images, graphics and other materials in this brochure are subject to the copyright and other intellectual property rights of General Motors and/or General Motors of Canada Company. These materials may not be reproduced, distributed or modified without the express written permission of General Motors and/or General Motors of Canada Company.



BUICK

BUICK.CA

