

IMPALA 2019

CHEVROLET



Impala Premier in Blue Velvet
Metallic (extra-cost colour)
with available features.

“Best Buy Four Years in a Row.”

— Kelley Blue Book’s KBB.com¹



ACCLAIMED EXCELLENCE.

Indulge yourself in the quiet confidence of award-winning excellence. In naming Impala a class-leading “Best Buy of 2018” in the U.S., KBB.com¹ declared, “If we ever decide to give out an MVP award for full-size cars, you can bet the Impala will own that trophy as well!”

The 2019 Impala honours its storied name with style that’s gracefully aggressive, artistically aerodynamic and passionately refined. Inside a spacious, carefully crafted interior, you’re embraced in exquisite comfort. And you’ll stay connected with an available built-in 4G LTE Wi-Fi[®] hotspot²

Is the renowned Impala the world’s finest large sedan? Ultimately, that’s something you’ll decide when you experience it yourself.

¹ For more information, visit Kelley Blue Book’s KBB.com. Canadian data may vary. Kelley Blue Book is a registered trademark of Kelley Blue Book Co., Inc. ² Includes 1 month or 3 GB of data (whichever comes first) from vehicle delivery date. Visit onstar.ca for vehicle availability, coverage maps, details and system limitations. Services and connectivity vary by model and conditions as well as geographical and technical restrictions. 4G LTE service available in select markets. Requires active connected vehicle services and a data plan to access the vehicle’s built-in Wi-Fi hotspot. Accessory Power must be active to use the Wi-Fi hotspot. Data plans provided by AT&T or its local service provider. Credit card is required for purchase.

FIND NEW ROADS™

Impala Premier in Blue Velvet
Metallic (extra-cost colour)
with available features.



TIMELESS BEAUTY. The unmistakable Impala is an artistic triumph. From its powerdome hood to bold quad tail lamps, this is a shape that commands attention from any angle.

PREMIER APPOINTMENTS. Upscale details of Impala Premier include chrome mirror caps, lower bodyside chrome mouldings and a dual-outlet exhaust with bright tips. Available 20-in. aluminum wheels add a custom touch.

AVAILABLE 305-HP 3.6L V6 ENGINE. Would you appreciate robust performance with the fuel efficiency of an advanced V6 engine? With an available 305-hp 3.6L V6 matched to an electronically controlled 6-speed automatic transmission, Impala leaps from 0–96 km/h (0–60 mph) in 6.8 seconds!¹

197-HP ECOTEC® 2.5L ENGINE. This 4-cylinder engine combines Direct Injection, Variable Valve Timing and auto stop/start technology engineered to help save fuel. In certain conditions, stop/start technology can automatically shut off the engine when stopped and enables a smooth transition when the brake pedal is released.

¹ Based on initial vehicle movement.



1. AERO SCULPTURE. Impala blends sharply sculpted detail with flowing form. It is an aesthetically pleasing shape that slices through the air with sheer precision.

2. SIGNATURE STYLE. Dramatic lower LED daytime running lamps combine with High-Intensity Discharge (HID) headlamps on Impala Premier.

3. MIRROR IMAGE. Chrome-capped exterior mirrors on Impala Premier are heated and power-adjustable, with integrated turn signal indicators and ground illumination.



1. ILLUMINATING AND INFORMATIVE.

With the full-colour Driver Information Centre or the steering wheel-mounted controls, you can operate the audio system, set the trip computer and manage vehicle settings.

2. A SECURE PLACE. The 8-in. diagonal colour touch-screen includes hidden, lockable storage behind the display to stow valuables out of sight. It also includes a USB port¹ for charging your smartphone.

3. POWER UP. Plug a laptop or other compatible device into the available 120-volt AC power outlet at the rear of the centre floor console.



¹ Not compatible with all devices.



Impala Premier interior
in Light Wheat with
Jet Black accents and
available features.

A HIGHER LEVEL OF LUXURY. From the flowing instrument panel to the exquisite attention to detail, beauty surrounds you in the luxurious Premier interior. The available heated steering wheel with a power tilt/telescoping feature combines with available heated and ventilated leather-appointed front seats to offer year-round comfort.

GET SITUATED. Find that perfect driving position with a standard 8-way power-adjustable driver seat that features power lumbar control. Available memory settings on Premier save preferences for two different drivers.

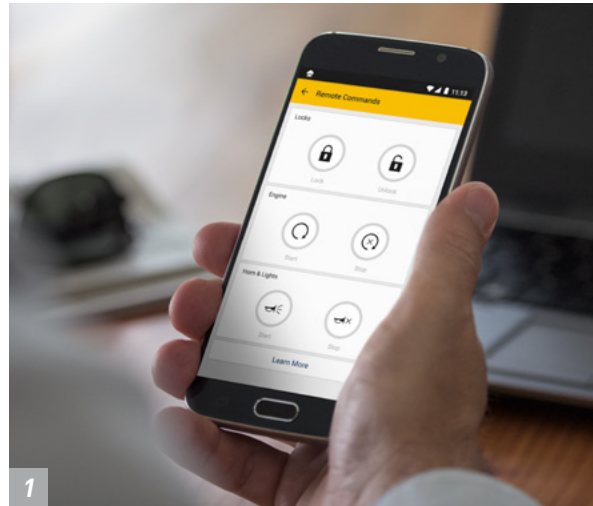
IMPALA STRIKES THE PERFECT CHORD. Your favourite songs come alive with the available premium 11-speaker Bose Centerpoint surround sound system, while the sounds of the outside world seem to almost disappear with triple-sealed doors and thick windshield and side glass.

1. myChevrolet® MOBILE APP! Simply download the app to your compatible smartphone and with an eligible active service plan² and a properly equipped vehicle, you can start or turn off your engine,³ lock or unlock your doors,³ send destinations to your available navigation⁴ system, view key vehicle diagnostic information,⁵ set parking reminders and more.

2. Apple CarPlay® COMPATIBILITY⁶
Take some of your favourite compatible iPhone® features and put them on your vehicle's touch-screen display in a smart, simple manner. Access your Phone, Music, Maps and Messages, as well as some of your other favourite apps.

3. EASY ACCESS TO YOUR SMARTPHONE.
You can quickly and intuitively interact with select smartphone apps with support for Android Auto.⁷ This system takes some of your compatible Android™ phone's features and lets you access them on the Chevrolet Infotainment System⁸ display. You can access your phone, text messages, music, navigation and more.

4. JUST CHARGE IT. Conveniently charge your cell phone with the wireless charging⁹ station, standard on Impala Premier.



1



2



3



4

¹ Available on select Apple and Android devices. Service availability, features and functionality are subject to limitations and vary by vehicle, device and the plan in which you are enrolled. Device data connection required. Visit onstar.ca for more details. ² Requires subscription to Remote Access Plan or Premium Access Plan. Remote Access Plan does not include emergency or security services. Services are subject to user terms and limitations, and vary by vehicle model. Visit onstar.ca for more details. ³ Unlock feature requires automatic locks. Remote start requires GM factory-installed and enabled remote start system. Visit onstar.ca for more details. ⁴ At time of printing, detailed map coverage is available for most major urban areas of the United States and for certain metropolitan areas of Canada (Vancouver, Calgary, Edmonton, Winnipeg, Windsor, London, Toronto, Ottawa, Montreal, Quebec City and Halifax). Coverage is significantly limited outside these areas. ⁵ Diagnostic capabilities vary by model and do not cover all vehicle conditions. Additional message and data rates may apply. Requires email address on file and enrollment in Vehicle Diagnostics. ⁶ Vehicle user interface is a product of Apple and its terms and privacy statements apply. Requires compatible iPhone and data plan rates apply. ⁷ Vehicle user interface is a product of Google and its terms and privacy statements apply. Requires the Android Auto app on Google Play and an Android compatible smartphone running Android 5.0 Lollipop or higher. Data plan rates apply. ⁸ Full functionality requires compatible Bluetooth and smartphone, and USB connectivity for some devices. Data plan rates may apply. ⁹ The system wirelessly charges one PMA- or Qi-compatible mobile device. Some devices require an adaptor or back cover. To check for phone or other device compatibility, visit mychevrolet.ca for details.



¹ Full functionality requires compatible Bluetooth and smartphone, and USB connectivity for some devices. Data plan rates may apply. ² Visit mychevrolet.ca to find out which phones are compatible with the vehicle. ³ Requires subscription to OnStar Guidance Plan, Premium Access Plan, OnStar Safety & Security Plan or Navigation Add-On. Services are subject to user terms and limitations, and vary by vehicle model. Visit onstar.ca for more details. ⁴ OnStar acts as a link to existing emergency service providers. Not all vehicles may transmit all crash data. Roadside service provided by Allstate Roadside Services, and limitations and restrictions apply. Stolen Vehicle Assistance requires armed factory-installed theft-deterrent system and selection of notification communication preference(s). These services are intended to assist with vehicle recovery and do not prevent theft or protect against damage or loss. Additional messaging and data rates may apply. Services are subject to user terms and limitations, and vary by vehicle model. Visit onstar.ca for more details. ⁵ At time of printing, detailed map coverage is available for most major urban areas of the United States and for certain metropolitan areas of Canada (Vancouver, Calgary, Edmonton, Winnipeg, Windsor, London, Toronto, Ottawa, Montreal, Quebec City and Halifax). Coverage is significantly limited outside these areas. ⁶ SiriusXM satellite radio service and SiriusXM Traffic subscriptions are sold as a package after the trial period. If you decide to continue service after your trial, the subscription plan you choose will automatically renew thereafter and you will be charged according to your chosen payment method at then-current rates. Fees and taxes apply. To cancel, you must call 1-866-635-0528. See the Customer Agreement for complete terms at siriusxm.ca/terms. All fees and programming subject to change. SiriusXM Traffic is available only in select markets. For more information, see siriusxm.ca/traffic. ⁷ Available in 10 Canadian provinces, 3 territories and the 48 contiguous United States. Subscription sold separately after trial period. If you decide to continue your service at the end of your trial subscription, the plan you choose will automatically renew and bill at then-current rates until you call 1-888-539-7474 to cancel. Other fees and taxes will apply. All fees and programming subject to change. See the Customer Agreement for complete terms at siriusxm.ca/terms. ⁸ Visit onstar.ca for vehicle availability, coverage maps, details and system limitations. Services and connectivity vary by model and conditions as well as geographical and technical restrictions. 4G LTE service available in select markets. Requires active connected vehicle services and a data plan to access the vehicle's built-in Wi-Fi hotspot. Accessory Power must be active to use the Wi-Fi hotspot. Data plans provided by AT&T or its local service provider. Credit card is required for purchase.

ON-COMMAND CONNECTIVITY. The standard Chevrolet Infotainment System¹ with Bluetooth² wireless technology makes it easy to connect to calls, music, contacts and more on the go – all by using natural voice commands or the 8-in. diagonal colour touch-screen display.

NAVIGATION MADE EASIER. Get directions with Turn-by-Turn Navigation³, with 1-month coverage of the OnStar Safety & Security Plan⁴. Or go for the available Chevrolet Infotainment System¹ with Navigation⁵, featuring full GPS guidance, along with a 3-month trial of SiriusXM⁶ Traffic⁶ for traffic updates and more.

AVAILABLE SIRIUSXM⁷ RADIO⁷. Listen to over 120 channels of commercial-free music from every genre, live play-by-play sports, the biggest news and talk, and the hottest entertainment at your fingertips, 24/7.

Wi-Fi⁸ IN YOUR IMPALA. Chevrolet offers an available built-in 4G LTE Wi-Fi⁸ hotspot⁸ (data plan required) providing a fast Internet connection for up to seven compatible devices.

IMPALA PUTS SAFETY FIRST. THE SAME WAY YOU DO.

TECH THAT HELPS YOU STAY SAFE. Impala helps you watch out with available Forward Collision Alert, Lane Departure Warning, Lane Change Alert with Side Blind Zone Alert and Rear Cross Traffic Alert.



FORWARD COLLISION ALERT. This available feature is engineered to monitor how close your vehicle is to a detected vehicle in front of you. If the system determines that a front-end collision with a detected vehicle is imminent, it is designed to alert the driver to a potential crash. It also can warn the driver if their Impala is following a detected vehicle much too closely.



LANE DEPARTURE WARNING. This available camera-based system is designed to read traffic lane markings, when identifiable, and provide audible and visual alerts if the vehicle drifts out of its detected lane when the driver is not actively steering and the turn signal is not activated.



LANE CHANGE ALERT WITH SIDE BLIND ZONE ALERT. Radar sensors in the rear corners of the vehicle are designed to help detect fast-approaching vehicles in the adjacent lanes as well as moving vehicles in the side mirror blind zones. Amber icons in the exterior mirrors indicate a vehicle's presence. Standard on Premier, available on LT.



REAR VISION CAMERA. When the transmission is in Reverse, the Rear Vision Camera with dynamic guiding lines allows the driver to view objects directly behind the vehicle via the screen in the centre stack. So it's easier to back up or park.



REAR CROSS TRAFFIC ALERT. Using radar sensors, this feature is designed to alert the driver to crossing traffic behind Impala when in Reverse. Audible warnings, as well as visual alerts on the Rear Vision Camera screen, are triggered if approaching vehicles are detected. Standard on Premier, available on LT.



ADAPTIVE CRUISE CONTROL – ADVANCED. This available feature enhances cruise control by allowing the vehicle to automatically follow a detected vehicle at the driver-selected following gap while the driver steers, reducing the need to frequently brake and accelerate.



FORWARD AUTOMATIC BRAKING. Using the same radar sensors as Adaptive Cruise Control – Advanced, Forward Automatic Braking is engineered to help mitigate collisions or prevent them at very low speeds. If the system detects an imminent front-end collision with a detected vehicle, it is designed to alert the driver and can automatically apply brake pressure if you have not already done so. Available on Premier.

Safety starts with you. Safety or driver assistance features are no substitute for the driver's responsibility to operate the vehicle in a safe manner. The driver should remain attentive to traffic, surroundings and road conditions at all times. Visibility, weather and road conditions may affect feature performance. Read the vehicle Owner's Manual for more important feature limitations and information. The Forward Automatic Braking feature may help reduce crash damage under certain conditions discussed in the Owner's Manual. Never rely on this feature to brake the vehicle.

SELECT VEHICLE FEATURES

IMPALA LS Impala LS includes these standard features:

197 hp ECOTEC 2.5L DOHC I-4 engine with Direct Injection and Variable Valve Timing (VVT) with Auto Stop/Start feature

6-speed automatic transmission with manual mode

4-wheel disc brakes with Duralife® brake rotors, ABS, Panic Brake Assist, cornering brake control and Hill Start Assist

StabiliTrak® Electronic Stability Control System and traction control

4-wheel independent suspension

18-in. steel wheels with fascia-spoke wheel covers

Heated power exterior mirrors with integrated turn signal indicators and ground illumination

Keyless Open and Start

Content theft alarm

Rear Vision Camera¹

Driver Information Centre with colour display

Tire pressure monitoring system (excludes spare tire)

Single-zone electronic air conditioning

Power windows and programmable door locks

Tilt and telescopic adjustable steering column

Cruise control

Steering wheel-mounted Bluetooth,^{9,2} cruise and audio system controls

Front bucket seats

Premium Cloth/leatherette seating surfaces

Power 8-way driver-seat adjuster with power lumbar adjuster

60/40 split-folding rear seatback with rear centre armrest

Chevrolet Infotainment System³ with 8-in. colour touch-screen display

6-speaker audio system

SiriusXM[®] Radio⁴ 3-month trial subscription

USB ports⁵; multiple

Bluetooth^{®2} hands-free phone connectivity and wireless audio streaming

1-month trial of Chevrolet Connected Services and OnStar Safety & Security Plan coverage⁶

Chevrolet Connected Access⁷ with 10 years of standard connectivity, which enables services such as Vehicle Diagnostics⁸ Dealer Maintenance Notification⁸ and more

Built-in 4G LTE Wi-Fi[®] hotspot⁹; includes 1-month or 3 GB data plan trial (whichever comes first) from vehicle delivery date

IMPALA LT Impala LT enhances LS features with:

18-in. painted-aluminum wheels

LED daytime running lamps, upper and lower

Remote vehicle starter system

Dual-zone automatic climate controls

Leather-wrapped steering wheel and shift knob

4-way adjustable front-seat head restraints

Adjustable, folding rear-seat head restraints

Power front-passenger seat lumbar adjuster

IMPALA PREMIER Impala Premier enhances LT features with:

305 hp 3.6L DOHC V6 engine with Direct Injection and Variable Valve Timing (VVT)

Lane Change Alert with Side Blind Zone Alert¹

Rear Park Assist¹ and Rear Cross Traffic Alert¹

High-Intensity Discharge (HID) headlamps

Chrome exterior mirror caps and door handles

Lower bodyside chrome mouldings

Power sunroof

19-in. machined-face aluminum wheels

Dual-outlet exhaust with bright tips integrated into fascia

Cargo convenience net

Universal home remote programmable transmitter

Perforated leather-appointed seating surfaces

Heated front bucket seats

Power 8-way front-passenger seat adjuster

Ambient instrument panel and door lighting

Chevrolet Infotainment System³ with Navigation¹⁰ and 8-in. colour touch-screen display

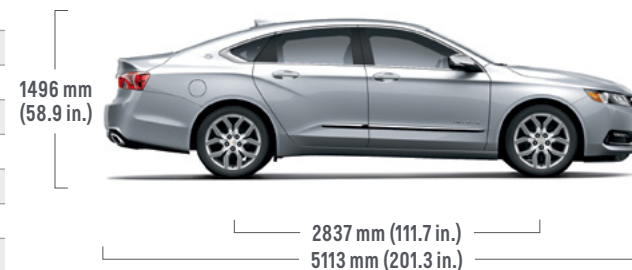
Single-slot CD/MP3 player

11-speaker Bose Centerpoint surround sound premium audio system

120-volt AC power outlet, located on rear of centre console

Wireless charging station¹¹

DIMENSIONS



EXTERIOR, mm (in.)

Width	1854 (73.0)
Front Track	1580 (62.2)
Rear Track	1575 (62.0)

INTERIOR, mm (in.) front/rear

Headroom	1013/950 (39.9/37.4)
Legroom	1163/1011 (45.8/39.8)
Shoulder Room	1471/1445 (57.9/56.9)
Hip Room	1394/1374 (54.9/54.1)

CAPACITIES

Trunk, L (cu. ft.) ¹²	532 (18.8)
Fuel Tank, L (imp. gal.)	70 (15.4)

CURB WEIGHT, kg (lb.)

- LS	1661 (3662)
- LT	1670 (3682)
- Premier	1754 (3867)

ESTIMATED FUEL CONSUMPTION RATINGS, L/100 km (mpg)¹³

	City	Highway
2.5L I-4	10.8 (26)	8.0 (35)
3.6L V6	12.7 (22)	8.5 (33)

¹ Read the vehicle Owner's Manual for important feature limitations and information. ² Visit mychevrolet.ca to find out which phones are compatible with the vehicle. ³ Full functionality requires compatible Bluetooth and smartphone, and USB connectivity for some devices. Data plan rates may apply. ⁴ Available in 10 Canadian provinces, 3 territories and the 48 contiguous United States. Subscription sold separately after trial period. If you decide to continue your service at the end of your trial subscription, the plan you choose will automatically renew and bill at then-current rates until you call 1-888-539-7474 to cancel. Other fees and taxes will apply. All fees and programming subject to change. See the Customer Agreement for complete terms at siriusxm.ca/terms. ⁵ Not compatible with all devices. ⁶ Includes navigation services, Remote Access Plan, plus a 3 GB or 1-month (whichever comes first) data plan trial from the vehicle delivery date. Data plan provided by AT&T or its local service provider. Requires vehicle electrical system (including battery), wireless service and GPS satellite signal to be available and operating for features to function properly. Visit onstar.ca for more details. Availability subject to change. ⁷ Standard connectivity available only to original purchaser for 10 years. Connected Access services are subject to change. Does not include emergency or security services. Compatible 4G LTE wireless coverage required. See onstar.ca for details and limitations. ⁸ Capabilities vary by model. Message and data rates may apply. Requires contact method on file and enrollment to receive alerts. Not all issues will deliver alerts or notifications. See onstar.ca for details and limitations. ⁹ Visit onstar.ca for vehicle availability, coverage maps, details and system limitations. Services and connectivity vary by model and conditions as well as geographical and technical restrictions. 4G LTE service available in select markets. Requires active connected vehicle services and a data plan to access the vehicle's built-in Wi-Fi hotspot. Accessory Power must be active to use the Wi-Fi hotspot. Data plans provided by AT&T or its local service provider. Credit card is required for purchase. ¹⁰ At time of printing, detailed map coverage is available for most major urban areas of the United States and for certain metropolitan areas of Canada (Vancouver, Calgary, Edmonton, Winnipeg, Windsor, London, Toronto, Ottawa, Montreal, Quebec City and Halifax). Coverage is significantly limited outside these areas. ¹¹ The system wirelessly charges one PMA- or Qi-compatible mobile device. Some devices require an adaptor or back cover. To check for phone or other device compatibility, visit mychevrolet.ca for details. ¹² Cargo and load capacity limited by weight and distribution. ¹³ Fuel consumption estimates based on GM testing in accordance with Government of Canada approved test methods. Refer to vehicles.nrcan.gc.ca for details. Your actual fuel consumption may vary.


SPECIFICATIONS

● STANDARD ○ AVAILABLE – NOT AVAILABLE

	LS	LT	PREMIER
SAFETY AND SECURITY			
Airbags ¹ ; Frontal and knee airbags for driver and front passenger; Head-curtain and seat-mounted side airbags for front and rear outboard seating positions	●	●	●
Door locks – rear doors, child-security, electric	●	●	●
Forward Automatic Braking ²	–	–	○ ³
Forward Collision Alert ²	–	–	○ ³
Lane Change Alert with Side Blind Zone Alert ²	–	○ ^{4,5,6}	●
Lane Departure Warning ²	–	–	○ ³
1-month trial of Chevrolet Connected Services and OnStar Safety & Security Plan coverage ⁷	●	●	●
Rear Cross Traffic Alert ²	–	○ ^{4,5,6}	●
Rear Park Assist ² – obstacle detection with audible warning	–	○ ^{4,5,6}	●
Rear Vision Camera ²	●	●	●
Safety restraints – 3-point belts for all seating positions, front seat belt pretensioners and dual-mode retractors – LATCH (Lower Anchors and Tethers for Children), rear seats	●	●	●
Security system – content theft alarm, audible/visible, programmable	●	●	●
StabiliTrak – Electronic Stability Control System	●	●	●
Theft-deterrent system – electronic immobilizer	●	●	●
Traction control – electronic, full-function, all-speed	●	●	●

	LS	LT	PREMIER
MECHANICAL			
Battery – maintenance-free with run-down protection	●	●	●
Brakes – power, 4-wheel disc with Duralife rotors – 4-wheel Anti-lock Braking System (ABS) with Brake Assist, cornering brake control and Hill Start Assist	●	●	●
Engine – ECOTEC 2.5L DOHC I-4 with VVT and Direct Injection with Auto Stop/Start feature Horsepower – 197 @ 6300 rpm Torque – 191 lb.-ft. @ 4400 rpm – 3.6L DOHC V6 with VVT and Direct Injection Horsepower – 305 @ 6800 rpm Torque – 264 lb.-ft. @ 5200 rpm	●	●	–
Engine – block heater	○	○	○
Exhaust system – aluminized stainless steel – single-outlet, hidden – dual-outlet, hidden – dual-outlet with bright tips, integrated into fascia	●	●	●
Steering – power, electric, rack-and-pinion, variable-assist	●	●	●
Suspension – front MacPherson strut/rear 4-link	●	●	●
Transmission – 6-speed automatic with overdrive and manual mode	●	●	●
EXTERIOR			
Door handles – body-colour – chrome with body-colour strip	●	●	–
Glass – solar-absorbing	●	●	●

	LS	LT	PREMIER
EXTERIOR (CONTINUED)			
Lighting – daytime running lamps – LED daytime running lamps, upper and lower auxiliary – exterior automatic lamp control – halogen headlamps – High-Intensity Discharge (HID) headlamps	●	–	–
Mirrors – body-colour caps – chrome caps – power remote control, heated with integrated turn signal indicators and ground illumination – driver-side auto-dimming mirror	●	●	–
Mouldings – lower bodyside chrome	–	–	●
Spoiler – rear	–	○ ⁹	○ ¹⁰
Tires – P235/50R18 all-season [†] – P245/45R19 all-season [†] – P245/40R20 all-season [†]	●	●	–
Wheels – 18" steel with fascia-spoke wheel cover – 18" painted-aluminum – 19" machined-face aluminum – 19" Special Midnight Edition aluminum with Black-painted pockets – 20" aluminum	●	–	–
Windshield wipers – flat-blade, 2-speed with variable delay (intermittent)	●	●	●

1 A NOTE ON CHILD SAFETY: Always use seat belts and the correct child restraint for your child's age and size, even with airbags. Even in vehicles equipped with the Passenger Sensing System, children are safer when properly secured in a rear seat in the appropriate infant, child or booster seat. Never place a rear-facing infant restraint in the front seat of any vehicle equipped with an active frontal airbag. See your vehicle Owner's Manual and child safety seat instructions for more safety information.
2 Read the vehicle Owner's Manual for important feature limitations and information. **3** Included and only available with Premier Confidence Package. **4** Included and only available with Driver Confidence Package. **5** Requires available LT Convenience Package. **6** Requires available 3.6L V6 engine. **7** Includes navigation services, Remote Access Plan, plus a 3 GB or 1-month (whichever comes first) data plan trial from the vehicle delivery date. Data plan provided by AT&T or its local service provider. Requires vehicle electrical system (including battery), wireless service and GPS satellite signal to be available and operating for features to function properly. Visit onstar.ca for more details. Availability subject to change. **8** Included and only available with Premier Convenience Package. **9** Included and only available with Sunroof and Spoiler Package or Midnight Edition Appearance Package. **10** Included and only available with Midnight Edition Appearance Package. **11** Included with available 20" aluminum wheels or Premier Confidence Package. **12** Includes P245/45R19 all-season[†] tires. **13** Includes P245/40R20 all-season[†] tires. [†] All-season tires may not satisfy winter tire requirements in all regions of the country. Tires specifically designed for severe winter conditions and marked with the "winter tire" symbol  may be required during certain months or in certain regions. Contact your Provincial, Municipal or local road authority for information regarding which tires are required in your particular area.

SPECIFICATIONS (CONTINUED)

	LS	LT	PREMIER
INTERIOR			
Climate control – electronic, single-zone, air conditioning	●	–	–
– automatic, dual-zone climate controls with rear-seat outlets	–	●	●
– rear floor heating and cooling ducts	●	●	●
Console – front floor with uncovered storage	●	–	–
– front floor with covered storage and rear air vents	–	●	●
Cruise control – electronic, steering wheel-mounted controls	●	●	●
– Adaptive Cruise Control – Advanced and Forward Automatic Braking ¹	–	–	○ ²
Floor mats – front and rear, carpeted	●	●	●
– front and rear, premium carpeted	–	○ ³	○ ⁴
Instrumentation – analogue gauges (includes speedometer, tachometer, coolant temperature and fuel gauges)	●	●	●
– Driver Information Centre (includes colour display with compass, average speed, instantaneous and average fuel consumption, fuel range, oil life monitoring system, tire pressure monitoring system [excludes spare tire], vehicle programmable features and message centre)	●	●	●
Lighting – dome, delayed entry/exit, theatre dimming, front and rear, glovebox and trunk	●	●	●
– ambient lighting system, doors and instrument panel	–	○ ⁵	●
Locks – power, programmable with lock-out protection	●	●	●
– Keyless Open and Start, includes door unlock/lock, keyless Push-Button Start and panic feature	●	●	●
Mirror – rear-view, manual day/night	●	●	●
– rear-view, auto-dimming	–	○ ³	○ ⁴
Power outlets – 12-volt, two, inside floor console and on rear of floor console	●	●	●
– 120-volt AC power outlet on rear of floor console	–	○ ^{3,5}	●
Steering column – tilt and telescopic adjustable, manual	●	●	●
– tilt and telescopic adjustable, power	–	–	○ ⁴
Steering wheel – 4-spoke with Bluetooth, ⁶ cruise and audio system controls	●	●	●
– leather-wrapped, includes leather-wrapped shifter	–	●	●
– heated	–	○ ³	○ ⁴

● STANDARD ○ AVAILABLE – NOT AVAILABLE

	LS	LT	PREMIER
INTERIOR (CONTINUED)			
Sunroof – power, tilt/sliding glass panel, with sunshade and express-open feature	–	○ ⁷	●
Sunshades – LH and RH padded, illuminated vanity mirrors with extensions	●	●	●
Trunk – cargo convenience net	–	○ ³	●
– carpeted trunk mat	–	○ ³	○ ⁴
– release, power remote	●	●	●
Windows – power, driver express-up/down, express-down all other windows and passenger lock-out features	●	●	●
Universal home remote – 3-channel programmable transmitter	–	○ ³	●
Vehicle starter system – remote	–	●	●
SEATS			
Reclining front bucket seats			
– with Premium Cloth/leatherette seating surfaces	●	●	–
– with leather-appointed seating surfaces	–	○ ⁸	–
– with perforated leather-appointed seating surfaces	–	–	●
Power 8-way driver-seat adjuster with power lumbar adjuster	●	●	●
Front-passenger seat – with power lumbar adjuster	–	●	●
– with power 8-way seat adjuster	–	○ ⁸	●
Head restraints – front, 2-way adjustable (up/down)	●	–	–
– front, 4-way adjustable (up/down – fore/aft)	–	●	●
– rear, 2-way adjustable	●	–	–
– rear, 2-way adjustable and foldable	–	●	●
Heated front bucket seats	–	○ ³	●
Heated and ventilated front bucket seats	–	–	○ ⁴
Memory Package – 2-position driver seat, exterior rear-view mirrors and power-adjustable tilt and telescopic steering column	–	–	○ ⁴
Seatback – rear, 60/40 split-folding with rear centre armrest	●	●	●

¹ Read the vehicle Owner's Manual for important feature limitations and information. ² Included and only available with Premier Confidence Package. ³ Included and only available with LT Convenience Package. ⁴ Included and only available with Premier Convenience Package. ⁵ Included and only available with LT Entertainment Package. ⁶ Visit mychevrolet.ca to find out which phones are compatible with the vehicle. ⁷ Requires Sunroof and Spoiler Package or Midnight Edition Appearance Package. ⁸ Requires available LT Leather Package, LT Convenience Package and 3.6L V6 engine.


SPECIFICATIONS (CONTINUED)

	LS	LT	PREMIER
INFOTAINMENT			
Chevrolet Infotainment System ¹ – Includes 8-in. diagonal colour touch-screen display with AM/FM stereo, Bluetooth ² phone connectivity and wireless audio streaming, and Android Auto ³ and Apple CarPlay ⁴ compatibility	●	●	–
Chevrolet Infotainment System ¹ with Navigation ⁵ – Includes 8-in. diagonal colour touch-screen display with Chevrolet Infotainment System features listed above and SiriusXM [®] Traffic ⁶ with 3-month trial subscription	–	○ ⁷	●
Single-slot CD/MP3 player	–	○ ⁷	●
Built-in 4G LTE Wi-Fi [®] hotspot ⁸ ; includes 1-month or 3 GB data plan trial (whichever comes first) from vehicle delivery date	●	●	●
Chevrolet Connected Access ⁹ with 10 years of standard connectivity, which enables services such as Vehicle Diagnostics ¹⁰ ; Dealer Maintenance Notification ¹⁰ and more	●	●	●
Motorized up/down touch-screen with access to lockable hidden storage area and USB port ¹¹	●	●	●
6-speaker audio system	●	●	–
11-speaker Bose Centerpoint surround sound premium audio system	–	○ ⁷	●
SiriusXM [®] Radio ¹² 3-month trial subscription	●	●	●
USB ports ¹¹ – three, two in centre console, one behind touch-screen	●	●	●
Wireless charging station ¹³	–	–	●

● STANDARD ○ AVAILABLE – NOT AVAILABLE

	LS	LT	PREMIER
AVAILABLE PACKAGES			
Driver Confidence Package – Includes Rear Cross Traffic Alert ¹⁴ ; Rear Park Assist ¹⁴ and Lane Change Alert with Side Blind Zone Alert ¹⁴	–	○ ^{15,16}	–
LT Convenience Package – Includes heated front bucket seats, heated steering wheel, interior auto-dimming rear-view mirror, universal home remote 3-channel programmable transmitter, 120-volt AC power outlet, premium carpeted front and rear floor mats, carpeted trunk mat and cargo convenience net	–	○	–
LT Entertainment Package – Includes Chevrolet Infotainment System ¹ with Navigation ⁵ ; single-slot CD/MP3 player, 11-speaker Bose Centerpoint surround sound premium audio system, ambient instrument panel and door lighting, and 120-volt AC power outlet	–	○ ¹⁶	–
LT Leather Package – Includes leather-appointed seating surfaces and power 8-way front-passenger seat adjuster	–	○ ^{15,16}	–
Midnight Edition Appearance Package – Includes 19" Special Midnight Edition aluminum wheels with Black-painted pockets, Black bowtie emblems, body-colour grille surround, rear spoiler and pedal cover set (requires Black exterior colour and Jet Black interior trim)	–	○ ^{16,17}	○ ¹⁸
Premier Confidence Package – Includes Forward Collision Alert ¹⁴ ; Lane Departure Warning ¹⁴ ; Adaptive Cruise Control – Advanced ¹⁴ ; Forward Automatic Braking ¹⁴ and 20" aluminum wheels	–	–	○ ^{19,20}

	LS	LT	PREMIER
AVAILABLE PACKAGES (CONTINUED)			
Premier Convenience Package – Includes exterior driver-side auto-dimming mirror, heated and ventilated front bucket seats, heated steering wheel, power-adjustable tilt and telescopic steering column, 2-position driver Memory Package, interior auto-dimming rear-view mirror, premium carpeted front and rear floor mats, and carpeted trunk mat	–	–	○
Sunroof and Spoiler Package – Includes power sunroof with tilt/sliding glass panel, sunshade and express-open feature, and rear spoiler	–	○ ¹⁶	–

¹ Full functionality requires compatible Bluetooth and smartphone, and USB connectivity for some devices. Data plan rates may apply. ² Visit mychevrolet.ca to find out which phones are compatible with the vehicle. ³ Vehicle user interface is a product of Google and its terms and privacy statements apply. Requires the Android Auto app on Google Play and an Android compatible smartphone running Android 5.0 Lollipop or higher. Data plan rates apply. ⁴ Vehicle user interface is a product of Apple and its terms and privacy statements apply. Requires compatible iPhone and data plan rates apply. ⁵ At time of printing, detailed map coverage is available for most major urban areas of the United States and for certain metropolitan areas of Canada (Vancouver, Calgary, Edmonton, Winnipeg, Windsor, London, Toronto, Ottawa, Montreal, Quebec City and Halifax). Coverage is significantly limited outside these areas. ⁶ SiriusXM satellite radio service and SiriusXM Traffic subscriptions are sold as a package after the trial period. If you decide to continue service after your trial, the subscription plan you choose will automatically renew thereafter and you will be charged according to your chosen payment method at then-current rates. Fees and taxes apply. To cancel, you must call 1-866-635-0528. See the Customer Agreement for complete terms at siriusxm.ca/terms. All fees and programming subject to change. SiriusXM Traffic is available only in select markets. For more information, see siriusxm.ca/traffic. ⁷ Included and only available with LT Entertainment Package. ⁸ Visit onstar.ca for vehicle availability, coverage maps, details and system limitations. Services and connectivity vary by model and conditions as well as geographical and technical restrictions. 4G LTE service available in select markets. Requires active connected vehicle services and a data plan to access the vehicle's built-in Wi-Fi hotspot. Accessory Power must be active to use the Wi-Fi hotspot. Data plans provided by AT&T or its local service provider. Credit card is required for purchase. ⁹ Standard connectivity available only to original purchaser for 10 years. Connected Access services are subject to change. Does not include emergency or security services. Compatible 4G LTE wireless coverage required. See onstar.ca for details and limitations. ¹⁰ Capabilities vary by model. Message and data rates may apply. Requires contact method on file and enrollment to receive alerts. Not all issues will deliver alerts or notifications. See onstar.ca for details and limitations. ¹¹ Not compatible with all devices. ¹² Available in 10 Canadian provinces, 3 territories and the 48 contiguous United States. Subscription sold separately after trial period. If you decide to continue your service at the end of your trial subscription, the plan you choose will automatically renew and bill at then-current rates until you call 1-888-539-7474 to cancel. Other fees and taxes will apply. All fees and programming subject to change. See the Customer Agreement for complete terms at siriusxm.ca/terms. ¹³ The system wirelessly charges one PMA- or Qi-compatible mobile device. Some devices require an adaptor or back cover. To check for phone or other device compatibility, see mychevrolet.ca for details. ¹⁴ Read the vehicle Owner's Manual for important feature limitations and information. ¹⁵ Requires available LT Convenience Package. ¹⁶ Requires available 3.6L V6 engine. ¹⁷ Includes P245/45R19 all-season[†] tires. ¹⁸ Not available with Premier Confidence Package or 20" aluminum wheels. ¹⁹ Includes P245/40R20 all-season[†] tires. ²⁰ Requires available Premier Convenience Package. [†] All-season tires may not satisfy winter tire requirements in all regions of the country. Tires specifically designed for severe winter conditions and marked with the "winter tire" symbol  may be required during certain months or in certain regions. Contact your Provincial, Municipal or local road authority for information regarding which tires are required in your particular area.

EXTERIOR COLOURS



G1M – Blue Velvet Metallic¹



G1W – Iridescent Pearl Tricoat^{1,2}



G7Q – Nightfall Grey Metallic¹



GAN – Silver Ice Metallic



GAZ – Summit White³



GB8 – Mosaic Black Metallic^{1,2}



GBA – Black



GMU – Pepperdust Metallic^{1,2}



GPJ – Cajun Red Tintcoat^{1,2}

WHEELS



18" steel with fascia-spoke wheel cover (Standard on LS)



18" painted-aluminum (Standard on LT)



19" machined-face aluminum (Standard on Premier)



19" Special Midnight Edition aluminum with Black-painted pockets (Available on LT and Premier)⁴



20" aluminum (Available on Premier)

¹ Available at extra cost. ² Not available on LS. ³ Not available on Premier. ⁴ Included and only available with Midnight Edition Appearance Package.

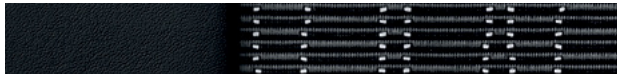
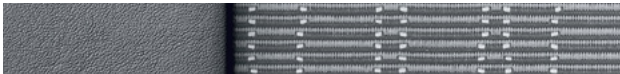
INTERIOR FABRICS



Dark Titanium-Colour Premium Cloth/Leatherette with Jet Black Accents^{1,2}



Jet Black Premium Cloth/Leatherette with Jet Black Accents²



Dark Titanium-Colour Leather Appointments with Jet Black Accents³



Jet Black Leather Appointments with Jet Black Accents³



Light Wheat Leather Appointments with Jet Black Accents³



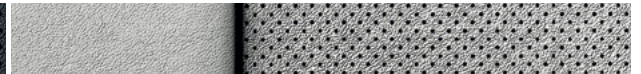
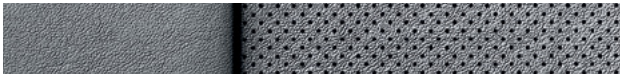
Dark Titanium-Colour Perforated Leather Appointments with Jet Black Accents⁴



Jet Black Perforated Leather Appointments with Jet Black Accents⁴



Light Wheat Perforated Leather Appointments with Jet Black Accents⁴



¹ Standard on LS. ² Standard on LT. ³ Available on LT. Requires available LT Leather Package. ⁴ Standard on Premier.



COMPLETE CARE

Experience Chevrolet Complete Care, a comprehensive coverage, warranty and protection program that comes standard with every new 2019 Chevrolet Impala leased or purchased in Canada. Simply, it is designed around you, to make it easy to keep your Chevrolet like new – and give you the confidence you deserve when you need it most.

YOUR COMPREHENSIVE NEW VEHICLE LIMITED WARRANTY.

2-year/48,000 km¹ Complimentary Oil Changes²

3-year/60,000 km¹ Base Warranty Coverage³

5-year/100,000 km¹ Powertrain Component Warranty Coverage³

5-year/100,000 km¹ Courtesy Transportation⁴

5-year/100,000 km¹ 24/7 Roadside Assistance⁴

6-year/160,000 km¹ Sheet Metal rust-through perforation coverage³

8-year/130,000 km¹ coverage³ on specified major emission components.

1-month trial of Chevrolet Connected Services and OnStar Safety & Security Plan coverage⁵

Chevrolet Connected Access⁶ with 10 years of standard connectivity, which enables services such as Vehicle Diagnostics⁷, Dealer Maintenance Notification⁷ and more.

OTHER OWNERSHIP PRIVILEGES AND PROGRAMS⁸

- Chevrolet Protection Plan – the only extended service plan backed by the resources and commitment of General Motors. The Chevrolet Protection Plan may be purchased at the time of sale or subsequently during the Base Warranty Coverage period⁹
- Chevrolet Certified Service – to help your Chevrolet vehicle live up to its performance promise, Chevrolet Certified Service – found exclusively at your Chevrolet dealer – is there. With all the engineering excellence in your vehicle, GM-trained technicians have the expertise to care for all of it.

- Chevrolet Owner Centre – as an owner, take advantage of the Chevrolet Owner Centre. This online owner’s destination gives you access to contests, current offers and the latest driving and maintenance tips. Find out more at mychevrolet.ca.

TO HELP YOU PURCHASE OR LEASE A NEW VEHICLE

- Purchase Financing and Leasing – on-the-spot financing; see dealer for full details¹⁰
- GM Student Bonus Program – students or recent graduates of high school, college or university¹⁰ may be entitled to receive a Student Bonus Vehicle Redemption Allowance of \$500 or \$750⁸ (tax inclusive) (purchased vehicle dependant) to use towards the purchase, lease or finance of one eligible new Chevrolet vehicle.
- GM Card[®] – Cardholders may redeem Earnings towards the total purchase price or lease down payment of an eligible new Chevrolet car, truck or crossover. Restrictions and limitations apply. For full program details, visit gmcards.ca.

INFORMATION RESOURCES You can find more information about these programs from your Chevrolet dealer, or at these information centres:

- The Chevrolet website at chevrolet.ca
- The GM Customer Care Centre at 1-800-GM-DRIVE (1-800-463-7483 or 1-800-263-3830 for TDD users).

A WORD ABOUT THIS BROCHURE Some of the equipment shown or described throughout this brochure may be available at extra cost. We have tried to make this brochure comprehensive and factual. We reserve the right, however, to make changes at any time, without notice, in prices, colours, materials, equipment, specifications, models and availability. Specifications, dimensions, measurements, ratings and other numbers in this brochure and other printed materials provided at the dealership or affixed to vehicles are approximates based upon design and engineering drawings and prototypes and laboratory tests. Your vehicle may differ due to variations in manufacture and equipment. Since some information may have been updated since the time of printing, please check with your Chevrolet dealer for complete details. General Motors of Canada Company reserves the right to lengthen or shorten the model year for any product, for any reason, or to start and end model years at different times. Certain vehicle features may lose their usefulness over time due to obsolescence from technological changes. Unless otherwise noted, all claims based on the latest available competitive information. Excludes other GM vehicles.

ENGINES Chevrolet products are equipped with engines produced by GM Global Propulsion Systems or other suppliers to GM worldwide. The engines in Chevrolet products may also be used in other GM makes and models.

ASSEMBLY Chevrolet vehicles and their components are assembled or produced by different operating units of General Motors, its subsidiaries or suppliers to GM worldwide. We sometimes find it necessary to produce Chevrolet vehicles with different or differently sourced components than originally scheduled. Since some options may be unavailable when your vehicle is assembled, we suggest you verify that your vehicle includes the equipment you ordered and that, if there were changes, they are acceptable to you.

FLEET ORDERS Some standard content may be deleted on fleet orders. See dealer for details.

AN IMPORTANT NOTE ABOUT ALTERATIONS AND WARRANTIES Installations or alterations to the original equipment vehicle (or chassis) as distributed by General Motors are not covered by the New Vehicle Limited Warranty. The special body company, assembler, equipment installer or upfitter is solely responsible for warranties on the body or equipment and any alterations (or any effect of the alterations) to any of the parts, components, systems or assemblies installed by GM. General Motors is not responsible for the safety or quality of design features, materials or workmanship of any alterations by such suppliers.

TRADEMARKS The marks appearing in this brochure including, but not limited to, General Motors, GM, Chevrolet, the Chevrolet emblem, Impala and their respective logos, emblems, slogans and vehicle model names and body designs; and other marks such as Duralife, ECOTEC, Find New Roads, myChevrolet, OnStar, the OnStar emblem and StabiliTrak are trademarks of General Motors LLC and/or General Motors of Canada Company, its subsidiaries, affiliates or licensors. Apple, Apple CarPlay, iPhone and Siri are trademarks of Apple Inc., registered in the U.S. and other countries. Bluetooth is a registered trademark of Bluetooth SIG, Inc. Bose and Centerpoint are registered trademarks of the Bose Corporation. Facebook is a registered trademark of Facebook Inc. © 2018 Sirius XM Canada Inc. “SiriusXM”, the SiriusXM logo, channel names and logos are registered trademarks of Sirius XM Radio Inc. and are used under license. All rights reserved. Twitter is a trademark of Twitter, Inc. YouTube is a registered trademark and Android, Android Auto and Google Play are trademarks of Google LLC. Wi-Fi is a registered trademark of Wi-Fi Alliance.

COPYRIGHT ©Copyright 2018 General Motors of Canada Company. All rights reserved. All text, images, graphics, and other materials in this brochure are subject to the copyright and other intellectual property rights of General Motors LLC and/or General Motors of Canada Company. These materials may not be reproduced, distributed or modified without the express written permission of General Motors LLC and/or General Motors of Canada Company. November 2018.

¹ Whichever comes first. ² Limit of four complimentary Lube-Oil-Filter services in total. Fluid top-offs, inspections, tire rotations, wheel alignments and balancing, etc., are not covered. Conditions apply. See dealer for details. ³ Conditions apply. See Warranty Booklet for details. ⁴ Conditions apply. See Owner’s Manual for details. ⁵ Includes navigation services, Remote Access Plan, plus a 3 GB or 1-month (whichever comes first) data plan trial from the vehicle delivery date. Data plan provided by AT&T or its local service provider. Requires vehicle electrical system (including battery), wireless service and GPS satellite signal to be available and operating for features to function properly. Visit onstar.ca for more details. Availability subject to change. ⁶ Standard connectivity available only to original purchaser for 10 years. Connected Access services are subject to change. Does not include emergency or security services. Compatible 4G LTE wireless coverage required. See onstar.ca for details and limitations. ⁷ Capabilities vary by model. Message and data rates may apply. Requires contact method on file and enrollment to receive alerts. Not all issues will deliver alerts or notifications. See onstar.ca for details and limitations. ⁸ Conditions apply. ⁹ Please work with your dealer to select the plan that is suitable for your driving needs. Dealers are free to set their own prices. ¹⁰ Subject to eligibility.

FIND NEW ROADS™

CHEVROLET.CA



TWITTER.COM/CHEVROLETCANADA



YOUTUBE.COM/CHEVROLETCANADA



FACEBOOK.COM/CHEVROLETCANADA



INSTAGRAM.COM/CHEVROLETCANADA