



Nissan Intelligent Mobility moves you one step ahead. In cars that feel like an extension of you, helping you see more and sense more, reacting with you, and sometimes even for you. Nissan Intelligent Mobility is about a better future - moving through life with greater confidence, excitement and connection to the world around you.



ALTIMA®

2022



¹World's first production variable compression turbo engine launched by Nissan Motor Co., Ltd. in 2018. ²Availability of features vary by vehicle model year, model, trim level, packaging, and options. ³Intelligent All-Wheel Drive cannot prevent collisions or provide enhanced traction in all conditions. Always monitor traffic and weather conditions. ⁴Driving is serious business and requires your full attention. If you have to use the connected device while driving, exercise extreme caution at all times so full attention may be given to vehicle operation. ⁵ProPILOT Assist cannot prevent collisions. It is the driver's responsibility to be in control of the vehicle at all times. Always monitor traffic conditions and keep both hands on the steering wheel. System operates only when lane markings are detected. Does not function in all weather, traffic, and road conditions. System has limited control capability and the driver may need to steer, brake, or accelerate at any time to maintain safety. See Owner's Manual for safety information. ⁶Available feature. ⁷Nissan Safety Shield technologies can't prevent all collisions or warn in all situations. See Owner's Manual for important safety information. ⁸Automatic Emergency Braking with Pedestrian Detection cannot prevent all collisions and may not provide warning or braking in all conditions. Driver should monitor traffic conditions and brake as needed to prevent collisions. See Owner's Manual for safety information. ⁹Rear Automatic Braking cannot prevent all collisions and may not provide warning or braking in all conditions. Driver should always turn and check surroundings before driving and brake as needed to prevent collisions. See Owner's Manual for safety information. ¹⁰Rear Cross Traffic Alert may not detect all vehicles. See Owner's Manual for safety information. ¹¹Blind Spot Warning cannot prevent collisions and may not detect every object or warn in all situations. Driver should always turn and look before changing lanes. See Owner's Manual for safety information. ¹²Lane Departure Warning and Intelligent Lane Intervention operate only when lane markings are able to be detected. See Owner's Manual for safety information. ¹³Intelligent Around View® Monitor cannot eliminate blind spots and may not detect every object. Driver should always turn and check surroundings before driving. See Owner's Manual for safety information. ¹⁴Virtual composite 360° view. ¹⁵Available feature shown. Use feature only when safe and legal. Compatible device and service required. Subject to third party service availability. For more information see [NissanUSA.com/connect/legal](https://www.nissanusa.com/connect/legal). ¹⁶VC-Turbo™ engine horsepower and torque ratings: 248 hp and 273 lb-ft of torque ratings when using 93-octane fuel; 236 hp and 267 lb-ft of torque ratings when using 87-octane octane fuel. ¹⁷2022 EPA Fuel Economy Estimates 28 City MPG / 39 Highway MPG / 32 Combined MPG for Altima® S FWD; 27 City MPG / 37 Highway MPG / 31 Combined MPG for Altima® SV, SR, SL FWD; 26 City MPG / 36 Highway MPG / 30 Combined MPG for Altima® SV, SL AWD; 25 City MPG / 35 Highway MPG / 29 Combined MPG for Altima® SR, Platinum AWD; 25 City MPG / 34 Highway MPG / 29 Combined MPG for Altima® SR FWD VC-Turbo. Fuel economy estimates based on 87-octane fuel. Actual mileage may vary with driving conditions. Use for comparison only. ¹⁸Extra cost option. ¹⁹Leather appointments. ²⁰Brake Assist cannot prevent all collisions and may not provide warning or braking in all conditions. Driver should monitor traffic conditions and brake as needed to prevent collisions. See Owner's Manual for safety information. ²¹Intelligent Forward Collision Warning cannot prevent collisions. See Owner's Manual for safety information. ²²RearView Monitor may not detect every object and does not eliminate blind spots or warn of moving objects. See Owner's Manual for safety information. ²³Vehicle Dynamic Control cannot prevent collisions due to abrupt steering, carelessness, or dangerous driving techniques. It should remain on when driving, except when freeing the vehicle from mud or snow. See Owner's Manual for safety information. ²⁴Intelligent Driver Alertness cannot provide a warning in every situation. See Owner's Manual for safety information. ²⁵Rear Door Alert System does not detect people or cargo. Always check rear seat before exiting. See Owner's Manual for safety information. ²⁶Remote Engine Start System to be used only in accordance with any laws or rules in effect in your vehicle's location. ²⁷Never program while driving. GPS mapping may not be detailed in all areas or reflect current road status. ²⁸Use Hands Free Text Messaging when parked in a safe location. If you must use while driving, monitor traffic conditions and keep both hands on the steering wheel to prevent collisions. Compatible device required. Message and data rates may apply. ²⁹Air bags are only a supplemental restraint system. Always wear your seat belt. Rear-facing child restraints should not be placed in the front-passenger's seat. All children 12 and under should ride in the rear seat properly secured in child restraints, booster seats, or seat belts according to their size. Air bags will only inflate in certain accidents. See Owner's Manual for safety information. ³⁰Tire Pressure Monitoring System is not a substitute for regular tire pressure checks. See Owner's Manual for safety information. ³¹Vehicle must be on for the Easy-Fill Tire Alert to operate. ³²Sonar System may not detect every object. Driver should always check surroundings before driving. See Owner's Manual for safety information. ³³Intelligent Trace Control cannot prevent collisions or loss of control. Driver should remain in control of vehicle at all times. See Owner's Manual for safety information. ³⁴Information displayed is dependent on how vehicle is equipped. Driving is serious business and requires your full attention. If you have to use the feature while driving, exercise extreme caution at all times so full attention may be given to vehicle operation. ³⁵Traffic Sign Recognition may not detect and read all traffic signs in all conditions. Driver should monitor all traffic signs and obey all traffic laws. See Owner's Manual for details. ³⁶Genuine Nissan Accessories are covered by Nissan's Limited Warranty on Genuine Nissan Replacement Parts, Genuine NISMO® S-Tune Parts, and Genuine Nissan Accessories for the longer of 12 months/12,000 miles (whichever occurs first) or the remaining period under the 3-year/36,000-mile (whichever occurs first) Nissan New Vehicle Limited Warranty. Terms and conditions apply. See dealer, Warranty Information Booklet, or [parts.NissanUSA.com](https://www.nissanusa.com) for details. ³⁷Cargo and load capacity limited by weight and distribution. Always secure cargo. ³⁸Vehicle shown is for illustrative purposes only. Not representative of brochure's model year/model. ³⁹FWD models only. ⁴⁰AWD models only. ⁴¹Roadside assistance coverage period varies by model-year model. For complete information concerning warranty coverage, conditions and exclusions, see your Nissan dealer and read the warranty information booklet for the model-year model. Amazon Alexa is a trademark of Amazon.com, Inc. or its affiliates. Google, Android, Android Auto, Google Maps and other marks are trademarks of Google LLC. To use Android Auto on your car display, you'll need an Android phone running Android 6 or higher, an active data plan, and the Android Auto app. Apple CarPlay®, Apple Music®, and iPhone® are registered trademarks of Apple, Inc. All rights reserved. iPhone® or other external device not included. Bluetooth® is a registered trademark of Bluetooth SIG, Inc. Bose® is a registered trademark of The Bose Corporation. ChromaFlair® is a trademark of Optical Coating Laboratory, LLC. Facebook® is a registered trademark of Facebook, Inc. HomeLink® is a registered trademark of Gentex Corporation. Siri® and Siri® Eyes Free are registered trademarks of Apple, Inc. The Sirius®, XM®, and SiriusXM® names and all related marks and logos are trademarks of Sirius XM Radio Inc. All other trademarks are the property of their respective owners. Twitter® is a registered trademark of Twitter, Inc. This brochure is intended for general descriptive and informational purposes only. It is subject to change and does not constitute an offer, representation or warranty (express or implied) by Nissan North America, Inc. Interested parties should confirm the accuracy of any information in this brochure as it relates to a vehicle directly with Nissan North America, Inc. before relying on it to make a purchase decision. Nissan North America, Inc. reserves the right to make changes, at any time, without prior notice, in prices, colors, materials, equipment, specifications, and models and to discontinue models or equipment. Due to continuous product development and other pre- and post-production factors, actual vehicle, materials and specifications may vary from this brochure. Some vehicles shown with optional equipment. See the actual vehicle for complete accuracy. Availability and delivery times for particular models or equipment may vary. Specifications, options and accessories may differ in Hawaii, U.S. territories and other countries. For additional information on availability, options or accessories, see your Nissan dealer or contact Nissan North America, Inc. At [NissanUSA.com](https://www.nissanusa.com), you'll find virtual product demonstrations, a way to "build your own Nissan," a dealer locator, and more information about key Nissan support services. Or if you'd prefer, call 1-800-NISSAN-3 for answers to specific questions about Altima® or any other Nissan vehicle. The Nissan names, logos, product names, feature names, and slogans are trademarks owned by or licensed to Nissan Motor Co. Ltd. and/or its North American subsidiaries. Other trademarks and trade names are those of their respective owners. Always wear your seat belt, and please drive responsibly. ©2021 Nissan North America, Inc. '22 Altima®. 2205815-N-10/21-70K-KSL



Make every part of your drive exhilarating

Unlock the pure joy of driving. How? With the available world's first variable compression turbo engine.¹ A suite of available safety features that can help you respond to the world around you.² Confidence from available Intelligent All-Wheel Drive.³ And surprising connectivity.⁴ This is the Nissan Altima.[®]



ProPILOT Assist

Enjoy the drive even more. With the groundbreaking ProPILOT Assist, your Altima® helps keep you centered in your lane, and following the car ahead at a preset distance. It can even bring your Altima to a full stop based on the highway traffic flow, and can bring you back up to speed when traffic starts moving again.^{5, 6}

Helps keep you centered in gentle curves

Maintains your preset speed and distance

Can even come to a complete stop



Nissan Safety Shield® 360

Nissan Intelligent Mobility is changing how you move forever with technology that makes you feel more connected, confident, and excited.

As part of Nissan Intelligent Mobility, Nissan Safety Shield® 360 includes features that can help you see more, sense more, and can give you an assist when you need it. The following features come standard on every 2022 Nissan Altima SV and above.^{2, 7}

- Automatic Emergency Braking with Pedestrian Detection⁸
- Rear Automatic Braking⁹
- Rear Cross Traffic Alert¹⁰
- Blind Spot Warning¹¹
- Lane Departure Warning¹²
- High Beam Assist



Intelligent Around View® Monitor

Four cameras make parking easy with a virtual composite 360° bird's-eye view of your Altima. You can select from split-screen close-ups of the front, rear, and curbside views for a better look. It also gives you an on-screen heads-up when it detects moving objects near your vehicle. We're looking at you, shopping cart.^{6, 13, 14}



NISSAN
INTELLIGENT
MOBILITY™



Apple CarPlay® integration

People to see? Places to be? Just ask Siri.® Equipped with Siri® voice control, Apple CarPlay® brings your contacts, favorite messaging apps, Apple Music® playlists, Apple Maps, and more on board to your Altima. Simply plug in your compatible iPhone® and go.^{4,15}



Talk to your Altima with NissanConnect® Services

With available NissanConnect® Services powered by SiriusXM,® you can access your Altima remotely using your Amazon Alexa or Google Assistant device. Start your engine, unlock your doors, and more.^{4,15}



Intelligent All-Wheel Drive

Altima gives you peace of mind you never thought you could get from a sedan. Part of Nissan Intelligent Mobility, Intelligent All-Wheel Drive continuously monitors road conditions and responds in an instant, sending power to the wheels that need it most.^{3,6}

248
horsepower⁶

273
lb-ft of torque¹⁶

34
hwy mpg¹⁷



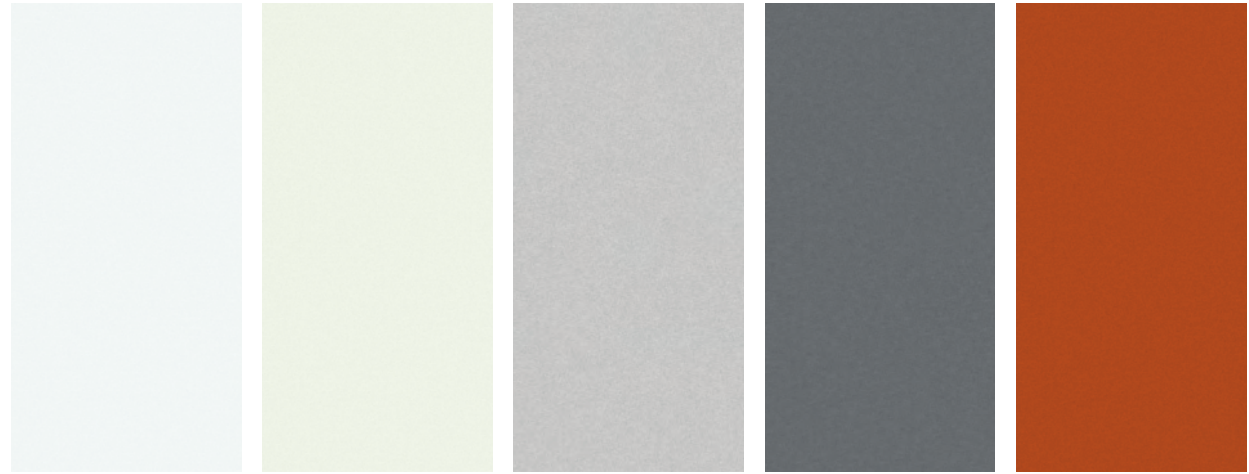
The world's first production variable compression turbo engine^{1,6}

Imagine an engine so smart it seems to anticipate what you want. Whether it's turbocharged power that pushes you back in your seat or impressive fuel efficiency, even in city streets,¹⁷ Altima SR's technologically advanced VC-Turbo® engine adjusts on the fly to let you have both – without compromise.⁶



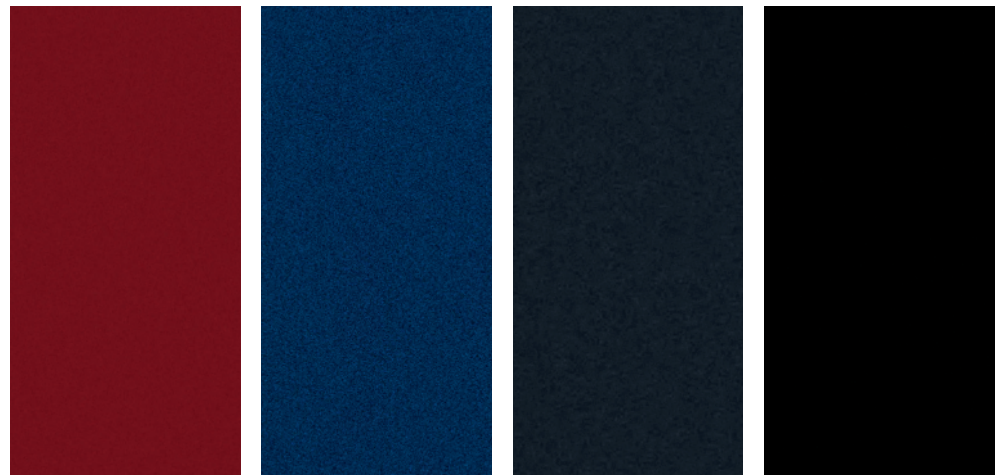
DEALER ePROCESS

CHOOSE YOUR COLOR



Glacier White Pearl White TriCoat¹⁸ Brilliant Silver Metallic Gun Metallic Sunset Drift ChromaFlair¹⁸

	S	SV	SR	SL	PLT
Charcoal Cloth	<input checked="" type="checkbox"/>				
Gray Cloth		<input checked="" type="checkbox"/>			
Charcoal Sport Cloth			<input checked="" type="checkbox"/>		
Gray Leather ¹⁹				<input checked="" type="checkbox"/>	<input checked="" type="checkbox"/>
Charcoal Leather ¹⁹				<input checked="" type="checkbox"/>	<input checked="" type="checkbox"/>



Scarlet Ember Tintcoat¹⁸ Deep Blue Pearl Storm Blue Metallic Super Black

■ Standard
 *Midnight Edition color

Nissan has taken care to ensure that the color swatches presented here are the closest possible representations of actual vehicle colors. Swatches may vary slightly due to the printing process and whether viewed in daylight, fluorescent or incandescent light. Please see the actual colors at your dealer.

	S	SV	SR	SL	PLT
Charcoal Cloth	<input checked="" type="checkbox"/>				
Gray Cloth		<input checked="" type="checkbox"/>			
Charcoal Sport Cloth			<input checked="" type="checkbox"/>		
Gray Leather ¹⁹				<input checked="" type="checkbox"/>	<input checked="" type="checkbox"/>
Charcoal Leather ¹⁹				<input checked="" type="checkbox"/>	<input checked="" type="checkbox"/>

CHOOSE YOUR INTERIOR



Nissan Altima[®] Platinum shown in Charcoal Leather.¹⁹



Charcoal Cloth S|SV Gray Cloth SV Charcoal Sport Cloth SR Gray Leather¹⁹ SL|Platinum Charcoal Leather¹⁹ SL|Platinum

CHOOSE YOUR TRIM LEVEL

S

2.5-liter Direct Injection Gasoline (DIG) DOHC 16-valve 4-cylinder engine • Front-Wheel Drive (FWD) • Xtronic CVT® (Continuously Variable Transmission) • Front vented disc/rear solid disc brakes • Anti-lock Braking System (ABS) • Electronic Brake force Distribution (EBD) • Brake Assist²⁰ • Dual-pinion electric-powered steering • Cruise control • Automatic Emergency Braking with Pedestrian Detection⁹ • Lane Departure Warning¹² • Intelligent Forward Collision Warning²¹ • RearView Monitor²² • Vehicle Dynamic Control (VDC)²³ with Traction Control System (TCS) • Hill start assist • High Beam Assist • Intelligent Driver Alertness²⁴ • 16" Steel wheels with wheel covers • Active grille shutters • Intelligent Auto Headlights • Halogen projector headlights • Dual power outside mirrors • Acoustic laminated glass • Air conditioning • Power windows with one-touch driver-side auto-up/down • Power door locks with auto-locking feature • Rear Door Alert²⁵ • Nissan Intelligent Key® with Push Button Ignition • Remote Engine Start System²⁶ • Tilt and telescoping steering column • Variable intermittent speed-sensitive windshield wipers • Sun visors with illuminated vanity mirrors and extensions • 60/40-split fold-down rear seatbacks • Cloth seat trim • Carbon-fiber look interior trim • 5" Multi-function information display • 7" touch-screen display • Voice Recognition²⁷ • Android Auto™ compatibility¹⁵ • Siri® Eyes Free¹⁵ • Hands-free Text Messaging Assistant²⁸ • Bluetooth® Hands-free Phone System¹⁵ • AM/FM audio system with six speakers • Steering wheel-mounted audio controls • Speed-sensitive volume control • Auxiliary audio input jack⁴ • One USB-A port⁴ • Streaming Audio via Bluetooth®¹⁵ • Nissan Advanced Air Bag System with ten air bags²⁹ • Tire Pressure Monitoring System (TPMS) with individual tire pressure display and Easy-Fill Tire Alert^{30, 31}



SV INCLUDES S EQUIPMENT PLUS:

Available Intelligent All-Wheel Drive³ • Electronic parking brake (AWD models only) • Active Brake Limited Slip (AWD models only) • Blind Spot Warning¹¹ • Rear Cross Traffic Alert¹⁰ • Rear Automatic Braking⁹ • Rear Sonar System³² • Active Ride Control • Intelligent Trace Control³³ • 17" Aluminum-alloy wheels • LED projector headlights with LED signature Daytime Running Lights • 8-way power adjustable driver's seat • Piano Black interior trim • 7" Advanced Drive-Assist® Display³⁴ • NissanConnect® 8" touch-screen display¹⁵ • Apple CarPlay® integration¹⁵ • Android Auto™ compatibility¹⁵ • Two USB-A ports and two USB-C ports⁴ • SiriusXM® Radio with trial subscription included¹⁵



SR/SR VC-TURBO® INCLUDES SV EQUIPMENT PLUS:

Paddle shifters with manual shift mode • Sport-tuned suspension (FWD models only) • 19" Aluminum-alloy wheels • Dark chrome V-Motion grille • Body-color door handles • Black outside mirrors • Charcoal rear diffuser • Dual chrome exhaust finishers • Sport Cloth seat trim • Leather-wrapped steering wheel and shift knob • Carbon-fiber look interior trim

SR VC-TURBO ADDS:

248-hp 2.0-liter Variable Compression Turbo (VC-Turbo®) 4-cylinder engine¹⁶ • Power sliding glass moonroof • Outside mirrors with LED turn signal indicators • Heated outside mirrors • Driver's seat power lumbar support • Heated front seats

SR VC-Turbo available on Front-Wheel Drive models only.



SL INCLUDES SV EQUIPMENT PLUS:

Electronic parking brake • ProPILOT Assist⁵ • Intelligent Lane Intervention¹² • Automatic brake hold • Traffic Sign Recognition³⁵ • 17" Aluminum-alloy wheels • LED fog lights • Outside mirrors with LED turn signal indicators • Heated outside mirrors • Power sliding glass moonroof • Dual chrome exhaust finishers • Dual Zone Automatic Temperature Control • Rear passenger air conditioning vents • Remote Engine Start System with Intelligent Climate Control²⁶ • Driver's seat power lumbar support • Leather-appointed seats • Heated front seats • Heated steering wheel • Leather-wrapped steering wheel and shift knob • Piano Black interior trim • Wood-tone trim • Nissan Door to Door Navigation with trial access to Premium Traffic included²⁷ • SiriusXM® Traffic and Travel Link with trial access included¹⁵ • NissanConnect® Services powered by SiriusXM®¹⁵ • Bose Premium Audio System with nine speakers



PLATINUM INCLUDES SL EQUIPMENT PLUS:

Standard Intelligent All-Wheel Drive³ • Intelligent Around View® Monitor¹³ • 19" Aluminum-alloy wheels • Auto-dimming inside rearview mirror • HomeLink® Universal Transceiver • Interior accent lighting • 4-way power adjustable front-passenger's seat • Memory System – driver's seat and outside mirrors



CHOOSE YOUR PACKAGE

S DRIVER ASSIST PACKAGE

- Rear Automatic Braking⁹
- Rear Cross Traffic Alert¹⁰
- Blind Spot Warning¹¹
- Rear Sonar System³²



SV PREMIUM PACKAGE

- Electronic parking brake
- ProPILOT Assist⁵
- Intelligent Lane Intervention¹²
- Automatic brake hold
- Outside mirrors with LED turn signal indicators
- Heated outside mirrors
- Power sliding glass moonroof
- Driver's seat power lumbar support
- Heated front seats
- Leather-wrapped steering wheel
- Leather-wrapped shift knob
- Dual chrome exhaust finishers



SR MIDNIGHT EDITION™ (available on 2.5-L models)

- 19" Midnight Edition aluminum-alloy wheels
- LED fog lights
- Power sliding glass moonroof
- Gloss black V-Motion grille
- Gloss black sport spoiler
- Black Midnight Edition badge
- Black badging
- Driver's seat power lumbar support
- Heated front seats
- Outside mirrors with LED turn signal indicators
- Heated outside mirrors



CHOOSE YOUR ACCESSORIES



A. All-Season Floor Mats - High Wall Liners
Skip the mud – and other messes.



B. All-Season Trunk Area Protector
Keep it looking like new.



C. Portable Cargo Organizer³⁷
A place for everything and everything in its place.



D. Clear Door Edge Protector³⁸
Help preserve your paint.



E. Illuminated Kick Plates
Fewer scuffs and a grand entry, every time.



F. Impact Sensor
Keep your Altima alarmed, so you don't have to be.



G. Sliding Trunk Organizer Tray³⁷
Bring some order to your cargo area.



H. Shopping Bag Hooks
Secure your groceries and keep it together.

Additional Accessories:

- Carpeted Floor Mats
- Carpeted Trunk Area Protector
- Hideaway Trunk Net Kit
- Clear Rear Bumper Protector
- Black Rear Bumper Protector
- Wheel Locks
- Cargo Blocks
- Interior Accent Lighting
- Frameless Auto-dimming Rear View Mirror with Universal Remote
- Frameless Prizm Rear View Mirror with Universal Remote
- And More

For more information and to shop online for Altima® Genuine Nissan Accessories, go to bit.ly/22Altima-Accys

GENUINE NISSAN ACCESSORIES

Turn brand-new into all you

Every Genuine Nissan Accessory is custom-fit, custom-designed, and durability-tested. Each one is backed by Nissan's 3-year/36,000-mile (whichever occurs first) limited warranty (if installed by dealer at the time of purchase), and can be financed when installed by dealer at time of purchase.³⁶

To see Genuine Nissan Accessories in action, go to bit.ly/22Altima-Video



Nissan Altima® SL shown in Scarlet Ember Tintcoat with 17" Aluminum-alloy Wheels, Splash Guards, Exterior Ground Lighting, Chrome Body Side Moldings, Chrome Rear Bumper Protector, and Rear Spoiler.

SPECIFICATIONS

Engines	S	SV	SR	SL	Platinum
2.5-liter Direct Injection Gasoline (DIG™) DOHC 16-valve 4-cylinder engine 188 ³⁹ /182 ⁴⁰ hp @ 6,000 rpm 180 ³⁹ /178 ⁴⁰ lb-ft of torque @ 3,600 rpm	■	■	■	■	■
2.0-liter Variable Compression Turbo (VC-Turbo®) DOHC 16-valve 4-cylinder engine 248/236 hp @ 5,600 rpm ¹⁶ 273/267 lb-ft of torque @ 4,000 rpm ¹⁶			T		
Drivetrain					
Front-Wheel Drive (FWD)	■	■	■	■	■
Intelligent All-Wheel Drive (AWD) ³		A	A	A	■
Xtronic CVT® (Continuously Variable Transmission)	■	■	■	■	■
Paddle shifters with manual shift mode			■		
Brakes					
Front vented disc/solid rear disc brakes	■	■	■	■	■
Anti-lock Braking System (ABS)	■	■	■	■	■
Electronic Brake force Distribution (EBD)	■	■	■	■	■
Brake Assist ²⁰	■	■	■	■	■
Electronic parking brake		A	A	■	■
Suspension/Steering					
Independent strut front suspension	■	■	■	■	■
Multi-link independent rear suspension	■	■	■	■	■
Twin-tube front struts/monotube rear shock absorbers	■	■	■	■	■
Sport-tuned suspension ³⁹			■		
Front and rear stabilizer bars	■	■	■	■	■
Dual pinion electric-powered steering	■	■	■	■	■
Driver Assistance Technologies					
Cruise control	■	■	■		
ProPILOT Assist ⁵		P		■	■
Intelligent Forward Collision Warning ²¹	■	■	■	■	■
Automatic Emergency Braking with Pedestrian Detection ⁸	■	■	■	■	■
Lane Departure Warning ¹²	■	■	■		
Intelligent Lane Intervention ¹²		P		■	■
Blind Spot Warning ¹¹	D	■	■	■	■
Rear Cross Traffic Alert ¹⁰	D	■	■	■	■
Rear Automatic Braking ⁹	D	■	■	■	■
Rear Sonar System ³²	D	■	■	■	■
RearView Monitor ²²	■	■	■	■	
Intelligent Around View® Monitor ¹³					■
Vehicle Dynamic Control (VDC) ²³ with Traction Control System (TCS)	■	■	■	■	■
Active Brake Limited Slip		A	A	A	■
Active Ride Control		■	■	■	■
Intelligent Trace Control ³³		■	■	■	■
Hill start assist		■	■	■	■
Automatic brake hold		P		■	■
High Beam Assist	■	■	■	■	■
Traffic Sign Recognition ³⁵				■	■
Intelligent Driver Alertness ²⁴	■	■	■	■	■

■ Standard A Intelligent All-Wheel Drive (AWD) P Part of SV Premium Package
T VC-Turbo™ D Part of Driver Assist Package ME Part of SR Midnight Edition

Wheels/Tires	S	SV	SR	SL	Platinum
16" Steel wheels with wheel covers	■				
17" Aluminum-alloy wheels		■		■	
19" Aluminum-alloy wheels			■		■
19" Midnight Edition aluminum-alloy wheels			ME		
P215/60HR16 all-season tires	■				
P215/55VR17 all-season tires		■		■	
P235/40VR19 all-season tires			■		■
Exterior Features					
Active grille shutters	■	■	■	■	■
Intelligent Auto Headlights	■	■	■	■	■
Halogen projector headlights	■				
LED projector headlights with LED signature Daytime Running Lights		■	■	■	■
LED fog lights			ME	■	■
Dual power outside mirrors	■	■	■	■	■
Outside mirrors with LED turn signal indicators		P	ME / T	■	■
Heated outside mirrors		P	ME / T	■	■
Power sliding glass moonroof		P	ME / T	■	■
Acoustic laminated glass	■	■	■	■	■
Dark chrome V-Motion grille			■		
Black V-Motion grille			■		
Black outside mirrors			■		
Black sport spoiler			ME		
Black badging			ME		
Charcoal rear diffuser			■		
Dual chrome exhaust finishers		P	■	■	■
Comfort/Convenience					
Air conditioning	■	■	■		
Dual Zone Automatic Temperature Control				■	■
Rear passenger air conditioning vents				■	■
Power windows with one-touch driver-side auto-up/down	■	■	■	■	■
Passenger-side front-window one-touch auto-up/down				■	■
Power door locks with auto-locking feature	■	■	■	■	■
Rear Door Alert ²⁵	■	■	■	■	■
Nissan Intelligent Key®	■	■	■	■	■
Remote Engine Start System ²⁶	■	■	■		
Remote Engine Start System ²⁶ with Intelligent Climate Control					■
Variable intermittent windshield wipers	■	■	■	■	■
Auto-dimming inside rearview mirror					■
HomeLink® Universal Transceiver					■
Interior accent lighting					■
Seating/Appointments					
6-way manual adjustable driver's seat	■	■	■	■	■
8-way power adjustable driver's seat		■	■	■	■
4-way power adjustable front-passenger's seat			■	■	■
Driver's seat power lumbar support		P	ME / T	■	■
Memory System - driver's seat and outside mirrors				■	■
60/40-split fold-down rear seatbacks	■	■	■	■	■
Cloth seat trim	■	■	■	■	■

Seating/Appointments (continued)	S	SV	SR	SL	Platinum
Sport Cloth seat trim			■		
Leather-appointed seats				■	■
Heated front seats		P	ME / T	■	■
Heated steering wheel				■	■
Leather-wrapped steering wheel and shift knob		P	■	■	■
Carbon-fiber look interior trim	■		■		
Piano Black interior trim		■		■	■
Wood-tone trim				■	■
Audio/Entertainment					
5" Multi-function information display	■				
7" Advanced Drive-Assist® Display ³⁴		■			
7" Touch-screen display	■				
NissanConnect® 8" touch-screen display ¹⁵		■	■	■	■
Nissan Door to Door Navigation with 5-year trial access to Premium Traffic included ²⁷				■	■
SiriusXM® Traffic and Travel Link ¹⁵				■	■
NissanConnect® Services powered by SiriusXM® ¹⁵				■	■
Voice Recognition ²⁷	■	■	■	■	■
Apple CarPlay® integration ¹⁵	■	■	■	■	■
Android Auto™ compatibility ¹⁵	■	■	■	■	■
Siri® Eyes Free ¹⁵	■	■	■	■	■
Hands-free Text Messaging Assistant ²⁸	■	■	■	■	■
Bluetooth® Hands-free Phone System ¹⁵	■	■	■	■	■
AM/FM audio system with six speakers	■	■	■		
Bose Premium Audio System with nine speakers				■	■
Active Noise Cancellation			■		
Steering wheel-mounted audio controls	■	■	■	■	■
Auxiliary audio input jack ⁴	■	■	■	■	■
One USB-A port ⁴	■	■	■	■	■
Two USB-A ports and two USB-C ports ⁴		■	■	■	■
SiriusXM® Radio ¹⁵		■	■	■	■
Streaming Audio via Bluetooth® ¹⁵	■	■	■	■	■
Safety/Security					
Nissan Advanced Air Bag System with dual-stage supplemental front air bags with seat-belt and occupant-classification sensors ²⁹	■	■	■	■	■
Seat-mounted side-impact supplemental air bags for front- and rear-seat outboard occupants ²⁹	■	■	■	■	■
Driver and front-passenger supplemental knee air bags ²⁹	■	■	■	■	■
Roof-mounted curtain side-impact supplemental air bags with rollover sensor for front- and rear-seat outboard occupant head protection ²⁹	■	■	■	■	■
3-point ALR/ELR seat belt system (ELR only for driver)	■	■	■	■	■
Front and rear outboard seat belts with pretensioners and load limiters	■	■	■	■	■
LATCH System (Lower Anchors and Tethers for Children)	■	■	■	■	■
Tire Pressure Monitoring System (TPMS) with Easy-Fill Tire Alert ^{30,31}	■	■	■	■	■
Nissan Vehicle Immobilizer System	■	■	■	■	■
Vehicle Security System	■	■	■	■	■

DIMENSIONS/CAPACITIES/WEIGHTS/MPG

Exterior Dimensions - Inches					
Wheelbase	111.2				
Overall length	192.9				
Overall width	72.9				
Overall height	56.7 – 57.4 (depending on vehicle configuration)				
Track width	62.8 – 63.6 (depending on vehicle configuration)				
Aerodynamics - CD					
Drag coefficient (Cd)	0.26				
Interior Dimensions (Front/Rear) - Inches					
Head room without moonroof	39.1/36.9				
Head room with moonroof	38.0/36.7				
Shoulder room	58.2/57.1				
Hip room	54.7/54.5				
Leg room	43.8/35.2				
Capacities					
Seating capacity	5				
Interior passenger volume without moonroof (cu. ft.)	100.6				
Interior passenger volume with moonroof (cu. ft.)	98.8				
Cargo capacity (cu. ft.) ³⁷	15.4				
Fuel tank (gals.)	16.2 (FWD)/16.0 (AWD)				
Curb Weights - Lbs.					
Base total (lbs.)	S	SV	SR	SL	Platinum
2.5-L FWD	3,243.9	3,284.9	3,328.5	3,325.5	-
2.5-L AWD	-	3,411.7	3,456.2	3,452.0	3,491.7
2.0-L VC-Turbo FWD	-	-	3,460.4	-	-
2022 EPA Fuel Economy Estimates ¹⁷					
City/Hwy/Combined MPG	S	SV	SR	SL	Platinum
2.5-L FWD	28/39/32	27/37/31	27/37/31	27/37/31	-
2.5-L AWD	-	26/36/30	25/35/29	26/36/30	25/35/29
2.0-L VC-Turbo FWD	-	-	25/34/29	-	-

NISSAN ROADSIDE ASSISTANCE

Your peace of mind is on us. For 36 months or 36,000 miles, whichever comes first, your new Nissan vehicle is covered for the following:⁴¹

- Flat-tire changes
- Trip Interruption benefits
- Jump starts
- Vehicle lockouts
- Emergency fuel delivery

Follow Nissan on:



visit [NissanUSA.com/altima](https://www.nissanusa.com/altima)

PRINTED IN USA

