



Nissan Intelligent Mobility moves you one step ahead. In cars that feel like an extension of you, helping you see more and sense more, reacting with you, and sometimes even for you. Nissan Intelligent Mobility is about a better future – moving through life with greater confidence, excitement and connection to the world around you.



VERSA®
2022



¹Availability of features vary by vehicle model year, model, trim level, packaging, and options. ²2022 EPA Fuel Economy Estimates. ²⁷City MPG / ³⁵Highway MPG / ³⁰Combined MPG for Versa® with Manual Transmission. ³²City MPG / ⁴⁰Highway MPG / ³⁵Combined MPG for Versa with Xtronic CVT®. Actual mileage may vary with driving conditions. Use for comparison only. ³Intelligent Cruise Control uses limited braking and is not a collision avoidance or warning system. Driver should monitor traffic conditions and brake as needed to prevent collisions. See Owner's Manual for safety information. ⁴Driving is serious business and requires your full attention. If you have to use the feature while driving, exercise extreme caution at all times so full attention may be given to vehicle operation. Information displayed is dependent on how vehicle is equipped. ⁵Use feature only when safe and legal. Compatible device and service required. Subject to third party service availability. For more information see [NissanUSA.com/connect/legal](https://www.nissanusa.com/connect/legal). ⁶Driving is serious business and requires your full attention. If you have to use the connected device while driving, exercise extreme caution at all times so full attention may be given to vehicle operation. ⁷Never program while driving. GPS mapping may not be detailed in all areas or reflect current road status. ⁸Use Hands Free Text Messaging when parked in a safe location. If you must use while driving, monitor traffic conditions and keep both hands on the steering wheel to prevent collisions. Compatible device required. Message and data rates may apply. ⁹Nissan Safety Shield technologies can't prevent all collisions or warn in all situations. See Owner's Manual for important safety information. ¹⁰Automatic Emergency Braking with Pedestrian Detection cannot prevent all collisions and may not provide warning or braking in all conditions. Driver should monitor traffic conditions and brake as needed to prevent collisions. See Owner's Manual for safety information. ¹¹Rear Automatic Braking cannot prevent all collisions and may not provide warning or braking in all conditions. Driver should always turn and check surroundings before driving and brake as needed to prevent collisions. See Owner's Manual for safety information. ¹²Available feature. ¹³Rear Cross Traffic Alert may not detect all vehicles. See Owner's Manual for safety information. ¹⁴Blind Spot Warning cannot prevent collisions and may not detect every object or warn in all situations. Driver should always turn and look before changing lanes. See Owner's Manual for safety information. ¹⁵Lane Departure Warning operates only when lane markings are able to be detected. See Owner's Manual for safety information. ¹⁶Cargo shown for display purposes only. Cargo and load capacity limited by weight and distribution. Always secure cargo. ¹⁷Extra cost option. ¹⁸Intelligent Forward Collision Warning cannot prevent collisions. See Owner's Manual for safety information. ¹⁹RearView Monitor may not detect every object and does not eliminate blind spots or warn of moving objects. See Owner's Manual for safety information. ²⁰Air bags are only a supplemental restraint system. Always wear your seat belt. Rear-facing child restraints should not be placed in the front-passenger's seat. All children 12 and under should ride in the rear seat properly secured in child restraints, booster seats, or seat belts according to their size. Air bags will only inflate in certain accidents. See Owner's Manual for safety information. ²¹Tire Pressure Monitoring System is not a substitute for regular tire pressure checks. See Owner's Manual for safety information. ²²Vehicle must be on for the Easy-Fill Tire Alert to operate. ²³Intelligent Driver Alertness cannot provide a warning in every situation. See Owner's Manual for safety information. ²⁴Rear Door Alert System does not detect people or cargo. Always check rear seat before exiting. See Owner's Manual for safety information. ²⁵Remote Engine Start System to be used only in accordance with any laws or rules in effect in your vehicle's location. ²⁶Genuine Nissan Accessories are covered by Nissan's Limited Warranty on Genuine Nissan Replacement Parts, Genuine NISMO® S-Tune Parts, and Genuine Nissan Accessories for the longer of 12 months/12,000 miles (whichever occurs first) or the remaining period under the 3-year/36,000-mile (whichever occurs first) Nissan New Vehicle Limited Warranty. Terms and conditions apply. See dealer, Warranty Information Booklet, or [parts.NissanUSA.com](https://www.nissanusa.com) for details. ²⁷Virtual Key to be used only in accordance with any laws or rules in effect in your vehicle's location. ²⁸Brake Assist cannot prevent all collisions and may not provide warning or braking in all conditions. Driver should monitor traffic conditions and brake as needed to prevent collisions. See Owner's Manual for safety information. ²⁹Vehicle Dynamic Control cannot prevent collisions due to abrupt steering, carelessness, or dangerous driving techniques. It should remain on when driving, except when freeing the vehicle from mud or snow. See Owner's Manual for safety information. ³⁰Roadside assistance coverage period varies by model-year model. For complete information concerning warranty coverage, conditions and exclusions, see your Nissan dealer and read the warranty information booklet for the model-year model. Apple CarPlay®, Apple Music®, Siri® and Siri® Eyes Free are registered trademarks of Apple, Inc. Bluetooth® word mark and logos are owned by Bluetooth SIG, Inc. Google, Android, Android Auto, Google Maps and other marks are trademarks of Google LLC. To use Android Auto on your car display, you'll need an Android phone running Android 6 or higher, an active data plan, and the Android Auto app. iPhone® is a registered trademark of Apple, Inc. All rights reserved. iPhone® or other external device not included. The Sirius®, XM®, and SiriusXM® names and all related marks and logos are trademarks of Sirius XM Radio Inc. All other trademarks are the property of their respective owners. Twitter® is a registered trademark of Twitter, Inc. This brochure is intended for general descriptive and informational purposes only. It is subject to change and does not constitute an offer, representation or warranty (express or implied) by Nissan North America, Inc. Interested parties should confirm the accuracy of any information in this brochure as it relates to a vehicle directly with Nissan North America, Inc. before relying on it to make a purchase decision. Nissan North America, Inc. reserves the right to make changes, at any time, without prior notice, in prices, colors, materials, equipment, specifications, and models and to discontinue models or equipment. Due to continuous product development and other pre- and post-production factors, actual vehicle, materials and specifications may vary from this brochure. Some vehicles shown with optional equipment. See the actual vehicle for complete accuracy. Availability and delivery times for particular models or equipment may vary. Specifications, options and accessories may differ in Hawaii, U.S. territories and other countries. For additional information on availability, options or accessories, see your Nissan dealer or contact Nissan North America, Inc. At [NissanUSA.com](https://www.nissanusa.com), you'll find virtual product demonstrations, a way to "build your own Nissan," a dealer locator, and more information about key Nissan support services. Or if you'd prefer, call **1-800-NISSAN-3** for answers to specific questions about Versa® or any other Nissan vehicle. The Nissan names, logos, product names, feature names, and slogans are trademarks owned by or licensed to Nissan Motor Co. Ltd. and/or its North American subsidiaries. Other trademarks and trade names are those of their respective owners. **Always wear your seat belt, and please drive responsibly.** ©2021 Nissan North America, Inc. ²²Versa®. 205817-N-11/21-60K-KSL

DEALER ePROCESS



Tech for a world that never stops

It's everything you're looking for — and more. Available Nissan Intelligent Mobility technologies help keep you safe and connect you to your world.¹ Want personalization? You got it. Interior tech lets you customize every drive. And when it comes to performance, merge and maneuver with ease, while getting up to 40 highway MPG.² This is the Nissan Versa.[®]



Smartphone connectivity



People to see? Places to be? Just ask Siri.® Equipped with Siri® voice control, Apple CarPlay® (shown above) brings on board to your Versa® your contacts, favorite messaging apps, Apple Music® playlists, Apple Maps, and more. Simply plug in your compatible iPhone® and go.^{5, 6, 7, 8}



Talk to Google on Android Auto™ and get things done with your voice. Easily send messages, get directions, control media and more. Just say, "Hey Google" or, in compatible cars, long-press the voice control button on your steering wheel to get started.^{5, 7, 8}

Intelligent Cruise Control

Go with the flow. Available Intelligent Cruise Control watches the flow of traffic to help out with your commute. The system helps maintain an adjustable speed and set distance between you and the car ahead.³

Advanced Drive-Assist Display

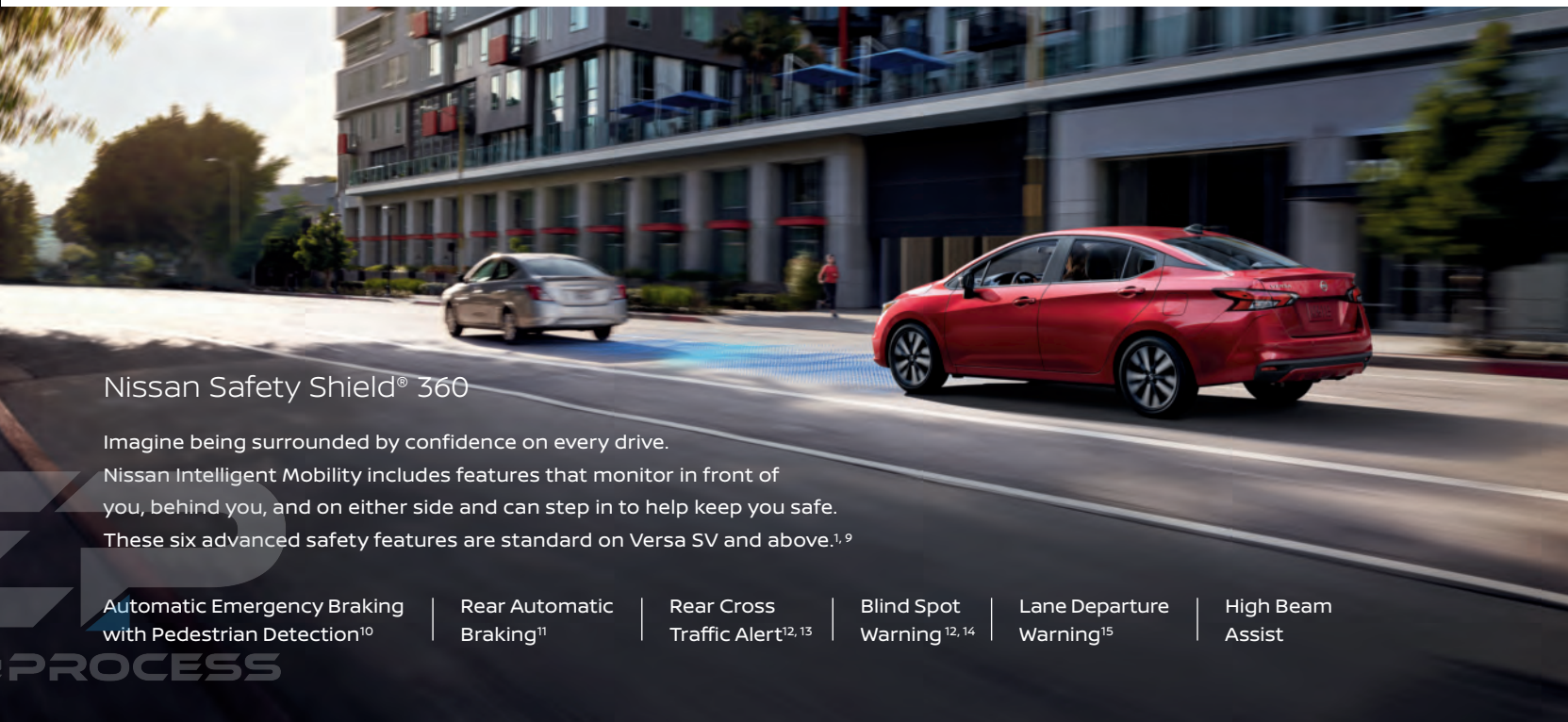
The innovative available Advanced Drive-Assist Display is at your command. The 7" color display can be customized to show everything from your tachometer to music to fuel economy history.⁴



Nissan Safety Shield® 360

Imagine being surrounded by confidence on every drive. Nissan Intelligent Mobility includes features that monitor in front of you, behind you, and on either side and can step in to help keep you safe. These six advanced safety features are standard on Versa SV and above.^{1, 9}

- Automatic Emergency Braking with Pedestrian Detection¹⁰
- Rear Automatic Braking¹¹
- Rear Cross Traffic Alert^{12, 13}
- Blind Spot Warning^{12, 14}
- Lane Departure Warning¹⁵
- High Beam Assist



Great mpg, plenty of power, infinite city fun

Versa® gives you a fuel-sipping exceptional 40 highway MPG² fuel economy and still delivers more power than ever. That means plenty of punch around town and when merging on the freeway.

32 city mpg²



40 hwy mpg²

Pass-through trunk and 60/40-split seatbacks

When you need more room for cargo, the available 60/40-split fold-down rear seats let you add some gear with a passenger still aboard. Or fold both seats down and really pack it in.¹⁶

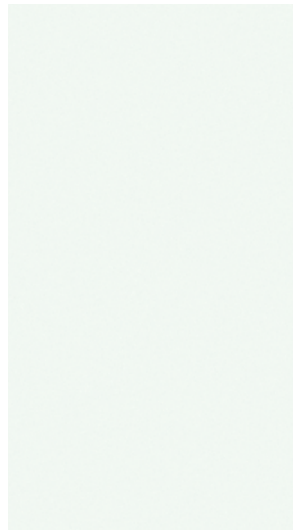


It's okay to say "wow" every time you get in. From the moment you get in, you'll feel like you've been upgraded. Impressive fit and finish, smart design, and available tech you might find in some luxury vehicles all add up to your everyday wow moment.

D-shaped steering wheel | 7" touch-screen display | Contrast dash stitching¹²

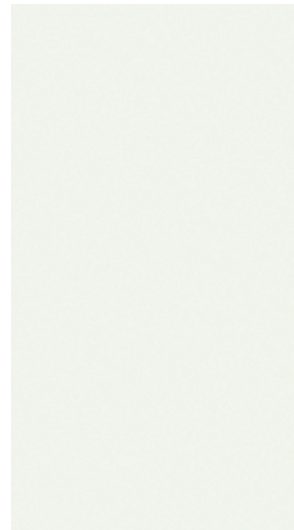
DEP
DEALER ePROCESS

CHOOSE YOUR COLOR



Fresh Powder

S SV SR



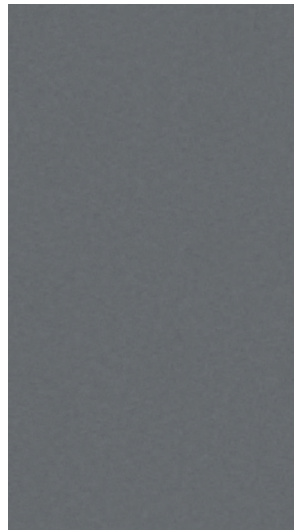
Aspen White TriCoat¹⁷

S SV SR



Brilliant Silver Metallic

S SV SR



Gun Metallic

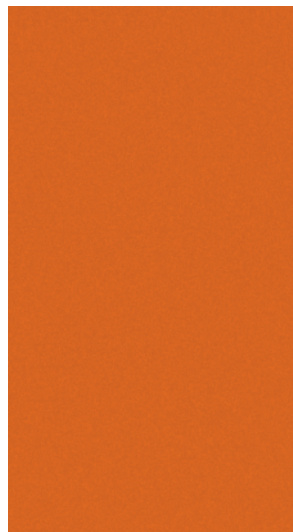
S SV SR

Charcoal Cloth	<input checked="" type="checkbox"/>		
Graphite Premium Cloth		<input checked="" type="checkbox"/>	
Charcoal Sport Cloth			<input checked="" type="checkbox"/>

		<input checked="" type="checkbox"/>	
			<input checked="" type="checkbox"/>

<input checked="" type="checkbox"/>		<input checked="" type="checkbox"/>	
			<input checked="" type="checkbox"/>

<input checked="" type="checkbox"/>		<input checked="" type="checkbox"/>	
			<input checked="" type="checkbox"/>



Monarch Orange Metallic¹⁷

S SV SR



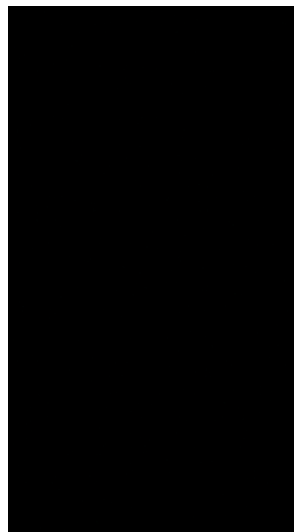
Scarlet Ember Tintcoat¹⁷

S SV SR



Electric Blue Metallic

S SV SR



Super Black

S SV SR

Charcoal Cloth			
Graphite Premium Cloth		<input checked="" type="checkbox"/>	
Charcoal Sport Cloth			<input checked="" type="checkbox"/>

		<input checked="" type="checkbox"/>	
			<input checked="" type="checkbox"/>

<input checked="" type="checkbox"/>		<input checked="" type="checkbox"/>	
			<input checked="" type="checkbox"/>

<input checked="" type="checkbox"/>		<input checked="" type="checkbox"/>	
			<input checked="" type="checkbox"/>

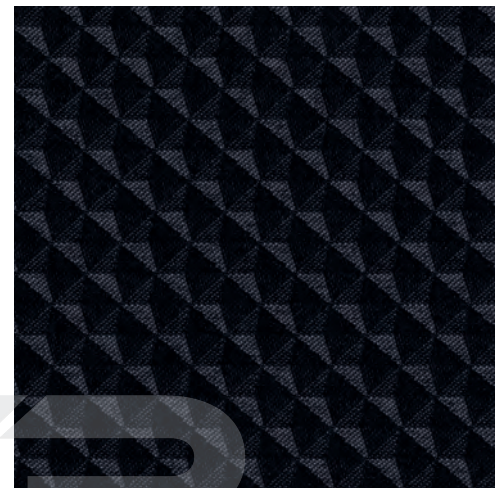
Standard

Nissan has taken care to ensure that the color swatches presented here are the closest possible representations of actual vehicle colors. Swatches may vary slightly due to the printing process and whether viewed in daylight, fluorescent or incandescent light. Please see the actual colors at your local Nissan dealer.

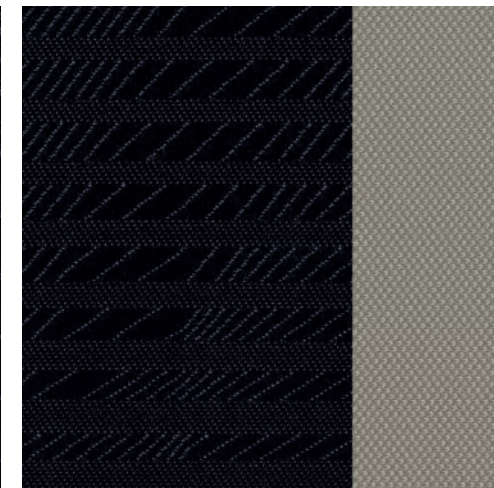
CHOOSE YOUR INTERIOR



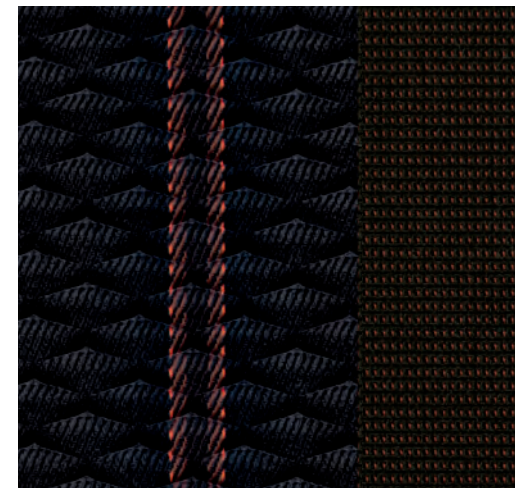
Nissan Versa[®] SR shown in Charcoal Sport Cloth with optional equipment.



Charcoal Cloth
S



Graphite Premium Cloth
SV



Charcoal Sport Cloth
SR

CHOOSE YOUR TRIM LEVEL

S

- 122-hp 1.6-liter DOHC 4-cylinder engine
- 5-speed manual transmission
- Available Xtronic CVT® (Continuously Variable Transmission)
- Intelligent Forward Collision Warning¹⁸
- Automatic Emergency Braking with Pedestrian Detection¹⁰
- Rear Automatic Braking¹¹
- Lane Departure Warning¹⁵
- High Beam Assist
- RearView Monitor¹⁹
- 7" Color touch-screen display
- Bluetooth® Hands-free Phone System⁵
- Streaming Audio via Bluetooth⁵
- Siri® Eyes Free⁵
- Remote Keyless Entry
- AM/FM audio system with four speakers
- Three USB-A ports⁶
- Voice Recognition⁷
- Hands-free Text Messaging Assistant⁸
- Cruise control
- Air conditioning with in-cabin filter
- Sun visors with vanity mirrors
- Chrome V-Motion grille
- Cloth seat trim
- Matte carbon-fiber look interior door trim
- Available 60/40-split fold-down rear seatbacks
- Nissan Advanced Air Bag System with dual-stage supplemental front air bags²⁰
- Seat-mounted driver and front-passenger side-impact supplemental air bags²⁰
- Seat-mounted rear-passenger side-impact supplemental air bags²⁰
- Driver and front-passenger knee air bags²⁰
- Roof-mounted curtain side-impact supplemental air bags for front- and rear-seat outboard occupant head protection²⁰
- Tire Pressure Monitoring System (TPMS) with Easy-Fill Tire Alert^{21, 22}



SR

INCLUDES SV EQUIPMENT PLUS:

- 17" Split 5-spoke aluminum-alloy wheels
- LED headlights with LED signature
- Black-painted heated outside mirrors with LED turn signal indicators
- Leather-wrapped steering wheel
- Prima-Tex™-appointed dash trim
- Nissan Intelligent Key® with Push Button Ignition
- Remote Engine Start System²⁵
- Dark chrome V-Motion grille
- Body-color rear spoiler
- AM/FM audio system with six speakers



SV INCLUDES S EQUIPMENT PLUS:

- 16" Aluminum-alloy wheels
- 7" Advanced Drive-Assist Display⁴
- NissanConnect® 7" color touch-screen display⁵
- Apple CarPlay® integration⁵
- Android Auto™ compatibility⁵
- Blind Spot Warning¹⁴
- Rear Cross Traffic Alert¹³
- Remote Keyless Entry with push button ignition
- SiriusXM® Radio with 3-month subscription included⁵
- Body-color heated outside mirrors
- Body-color exterior door handles
- Chrome interior door handles
- Intelligent Driver Alertness²³
- Rear Door Alert²⁴



CHOOSE YOUR PACKAGE

SR

CONVENIENCE PACKAGE

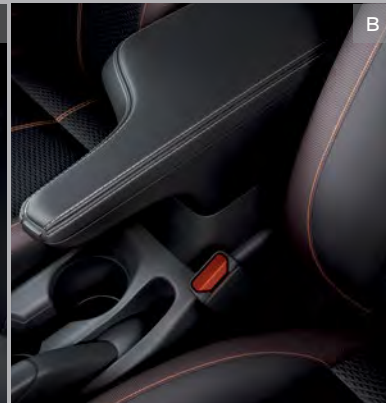
- Intelligent Cruise Control³
- Automatic Temperature Control
- Heated front seats



CHOOSE YOUR ACCESSORIES



A



B



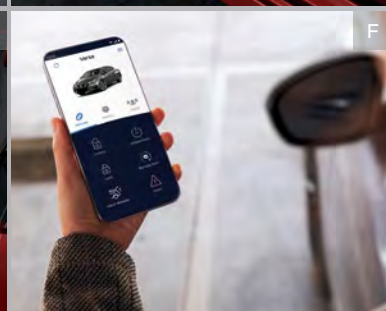
C



D



E



F



G



H

A. Center Console Storage Mats
Keep your valuables from going their own way.

B. Center Armrest with Storage
Relax, and give your arm a rest.

C. Interior Accent Lighting
Add a warm glow to the mood.

D. Illuminated Kick Plates
Fewer scuffs and a grand entry, every time.

E. All-Season Trunk Area Protector
Because being a trunk isn't easy.

F. Virtual Key²⁷
The future of locking doors and starting your vehicle is here.

G. Clear Rear Bumper Protector
No one has to know you're protecting your bumper.

H. All-Season Floor Mats
Bring on the weather.

Additional Accessories:

- Frameless Auto-dimming Rearview Mirror with Universal Remote
- Door Pocket Lighting
- Frameless Prizm Rearview Mirror with Universal Remote
- First-aid Kit
- Door Sill Protectors
- Sliding Trunk Organizer¹⁶
- Hideaway Trunk Net¹⁶
- Portable Trunk Organizer¹⁶
- Shopping Bag Hooks
- Nissan Chrome License Plate Frame
- Nissan Valve Stem Caps
- Wheel Locks
- And More

For more information and to shop online for Versa® Genuine Nissan Accessories, go to bit.ly/22Versa-Accys

GENUINE NISSAN ACCESSORIES

Turn brand-new into all you

Every Genuine Nissan Accessory is custom-fit, custom-designed, and durability-tested. Each one is backed by Nissan's 3-year/36,000-mile (whichever occurs first) limited warranty (if installed by dealer at the time of purchase) and can be financed when installed by dealer at time of purchase.²⁶



Nissan Versa® SR shown in Scarlet Ember Tintcoat with Chrome Trunk Accent, Exterior Ground Lighting, Side-Window Deflectors, Rear Spoiler (standard on SR), and Splash Guards.

SPECIFICATIONS

Engine	S	SV	SR
1.6-liter DOHC 16-valve 4-cylinder engine	■	■	■
122 hp @ 6,300 rpm			
114 lb-ft of torque @ 4,000 rpm			
Continuously Variable Valve Timing Control System (CVTCS) on intake and exhaust valves	■	■	■
Sequential multi-point fuel injection	■	■	■
Nissan Direct Ignition System	■	■	■
Platinum-tipped spark plugs	■	■	■
Electronic drive-by-wire throttle	■	■	■

Drivetrain	S	SV	SR
Front engine/Front-Wheel Drive	■	■	■
5-speed manual transmission	■		
Xtronic CVT® (Continuously Variable Transmission)	□	■	■

Brakes	S	SV	SR
Front vented disc brakes/rear drum brakes	■	■	■
Anti-lock Braking System (ABS)	■	■	■
Electronic Brake force Distribution (EBD)	■	■	■
Brake Assist ²⁸	■	■	■

Suspension/Steering	S	SV	SR
Independent strut front suspension with stabilizer bar	■	■	■
Torsion beam rear suspension with integrated stabilizer bar	■	■	■
Vehicle-speed-sensitive electric power steering	■	■	■

Driver Assistance Technologies	S	SV	SR
Cruise control			■
Intelligent Cruise Control ³			■
Intelligent Forward Collision Warning ¹⁸	■	■	■
Automatic Emergency Braking with Pedestrian Detection ¹⁰	■	■	■
Lane Departure Warning ¹⁵	■	■	■
High Beam Assist	■	■	■
Blind Spot Warning ¹⁴		■	■
Rear Cross Traffic Alert ¹³		■	■
RearView Monitor ¹⁹	■	■	■
Rear Automatic Braking ¹¹	■	■	■
Hill start assist	■	■	■
Intelligent Driver Alertness ²³		■	■
Vehicle Dynamic Control (VDC) ²⁹ with Traction Control System (TCS)	■	■	■

Wheels/Tires	S	SV	SR
15" x 6.5" Steel wheels with full wheel covers	■		
16" x 6.0" Aluminum-alloy wheels		■	
17" x 6.5" Split 5-spoke aluminum-alloy wheels			■
195/65R15 All-season tires	■		
205/55R16 All-season tires		■	
205/50R17 All-season tires			■

Exterior Features	S	SV	SR
Automatic on/off headlights	■	■	■
Halogen projector headlights	■	■	
LED headlights with LED signature			■
Chrome V-Motion grille	■	■	
Dark chrome V-Motion grille			■
Dual power outside mirrors	■	■	■
Heated outside mirrors		■	
Heated outside mirrors with LED turn signal indicators			■
Black Resin outside mirrors	■		
Body-color outside mirrors		■	
Black-painted outside mirrors			■
Black exterior door handles	■		
Body-color exterior door handles		■	■
Body-color rear spoiler			■
Carbon-fiber look rear diffuser	■	■	■

Comfort/Convenience	S	SV	SR
Air conditioning with in-cabin microfilter	■	■	■
Automatic Temperature Control			■
Power windows with driver's one-touch auto-up/down	■	■	■
Power door locks with auto-locking feature	■	■	■
Rear Door Alert ²⁴		■	■
Follow Me Home headlights			■
Remote Keyless Entry	■		
Remote Keyless Entry with push button ignition		■	
Nissan Intelligent Key® with Push Button Ignition			■
Remote Engine Start System ²⁵			■
Tilt and telescoping steering column	■	■	■
Sun visors with vanity mirrors and extensions	■	■	■
Map lights with key-linked illuminated entry	■	■	■
12-volt DC power outlet	■	■	■

Seating/Appointments	S	SV	SR
6-way manual adjustable driver's seat	■	■	■
4-way manual adjustable front-passenger's seat	■	■	■
Cloth seat trim		■	
Premium cloth seat trim		■	
Sport cloth seat trim			■
Prima-Tex™-appointed dash trim			■
Heated front seats			■
Leather-wrapped steering wheel			■
Matte carbon-fiber look interior door trim	■	■	■
Chrome interior door handles		■	■
60/40-split fold-down rear seatbacks	□	■	■

Infotainment	S	SV	SR
Advanced Drive-Assist Display ⁴	■	■	■
7" Color touch-screen display	■	■	■
NissanConnect® 7" color touch-screen display ⁵	■	■	■
Apple CarPlay® integration ⁵	■	■	■

Infotainment (continued)	S	SV	SR
Android Auto™ compatibility ⁵		■	■
Siri® Eyes Free ⁵	■	■	■
Hands-free Text Messaging Assistant ⁸	■	■	■
Bluetooth® Hands-free Phone System ⁵	■	■	■
AM/FM audio system with four speakers	■	■	
AM/FM audio system with six speakers			■
SiriusXM® Radio with 3-month subscription included ⁵		■	■
Voice Recognition ⁷	■	■	■
Auxiliary audio input jack ⁶	■	■	■
Three USB-A ports ⁶	■	■	■
Streaming Audio via Bluetooth® ⁵	■	■	■
Steering wheel-mounted audio controls	■	■	■

Safety/Security	S	SV	SR
Nissan Advanced Air Bag System with dual-stage supplemental front air bags with seat-belt and occupant-classification sensors ²⁰	■	■	■
Seat-mounted driver and front-passenger side-impact supplemental air bags ²⁰	■	■	■
Seat-mounted rear-passenger side-impact supplemental air bags ²⁰	■	■	■
Driver and front-passenger supplemental knee air bags ²⁰	■	■	■
Roof-mounted curtain side-impact supplemental air bags for front- and rear-seat outboard occupant head protection ²⁰	■	■	■
3-point ALR/ELR seat belt system (ELR only for driver)	■	■	■
Front seat belts with pretensioners and load limiters	■	■	■
LATCH System (Lower Anchors and Tethers for CHildren)	■	■	■
Zone Body construction with front and rear crumple zones	■	■	■
Hood buckling creases and safety stops	■	■	■
Child safety rear door locks	■	■	■
Power windows lock-out button	■	■	■
Energy-absorbing steering column	■	■	■
Tire Pressure Monitoring System (TPMS) with Easy-Fill Tire Alert ^{21, 22}	■		
Tire Pressure Monitoring System (TPMS) with individual tire pressure display and Easy-Fill Tire Alert ^{21, 22}		■	■
Nissan Vehicle Immobilizer System	■	■	■

DIMENSIONS/CAPACITIES/WEIGHTS/MPG

Exterior Dimensions - Inches			
	S	SV	SR
Wheelbase	103.1	103.1	103.1
Overall length	177	177	177
Overall width	68.5	68.5	68.5
Overall height	57.3	57.3	57.7
Track width (front/rear)	59.8/60.2	59.8/60.2	59.3/59.6

Interior Dimensions (front/rear) - Inches			
Head room	39.5/36.3		
Leg room	44.5/31		
Hip room	50.9/50.1		
Shoulder room	53.1/53.6		

Aerodynamics - Cd				
	S MT	S CVT	SV	SR
Drag coefficient	0.32	0.32	0.32	0.29

Curb Weights - Lbs.			
	S	SV	SR
Base total			
Manual transmission	2,599	-	-
Xtronic CVT®	2,650	2,657	2,729

EPA Fuel Economy Estimates ²			
City/Hwy/Combined MPG			
Manual transmission	27/35/30	-	-
Xtronic CVT®	32/40/35	32/40/35	32/40/35

NISSAN ROADSIDE ASSISTANCE

Your peace of mind is on us. For 36 months or 36,000 miles, whichever comes first, your new Nissan is covered for the following:³⁰

- Flat-tire changes
- Trip Interruption benefits
- Jump starts
- Vehicle lockouts
- Emergency fuel delivery

Follow Nissan on:



visit NissanUSA.com/versa

PRINTED IN POLAND