



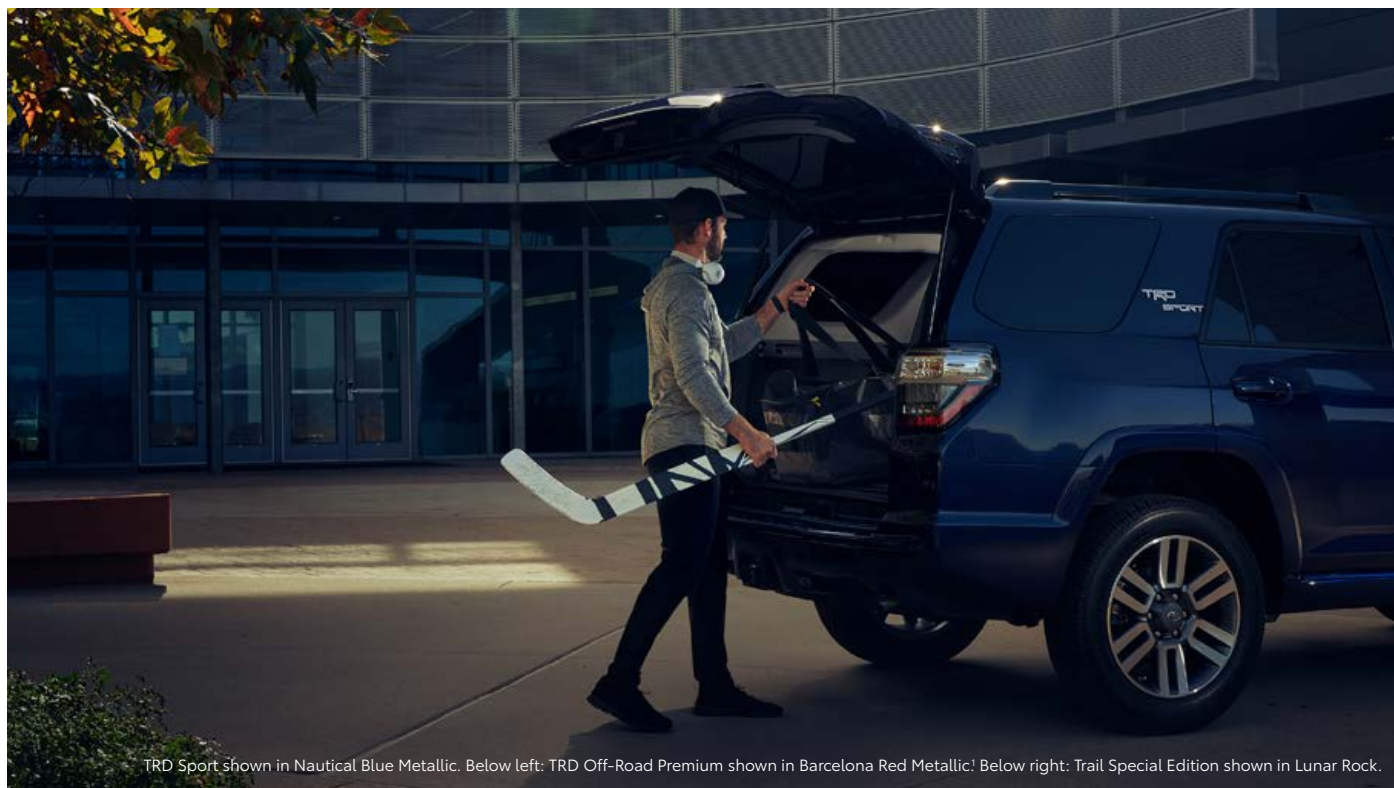
TOYOTA

2022 4Runner

2022 4RUNNER

Captain of the off-road.

Grab your gear — it's going to be a wild ride. 4Runner has been championing the off-road for over 35 years and counting. And with the introduction of TRD Sport, this all-new rig shows up ready to play. With the dependability of a veteran and the hustle of a rookie — the 2022 Toyota 4Runner is equipped to take your adventures up a notch.



TRD Sport shown in Nautical Blue Metallic. Below left: TRD Off-Road Premium shown in Barcelona Red Metallic. Below right: Trail Special Edition shown in Lunar Rock.



See numbered footnotes in Disclosures section.

CAPABILITY

Conquer the off-road.

4Runner delivers a ride that's smooth in the city — but its true home is on the trail. Featuring available off-road technologies like a Multi-Terrain Monitor (MTM),² Hill Start Assist Control (HAC)³ and Multi-Terrain Select (MTS), this body-on-frame icon is built to take on the toughest terrain.⁴



TRD Sport's advanced capability

Featuring an X-REAS suspension, TRD Sport helps you confidently corner and carve through roads without breaking a sweat. And it's equipped with 20-in. alloy wheels and premium tires for enhanced traction.



Crawl Control (CRAWL)

Available Crawl Control (CRAWL)⁵ automatically modulates the throttle and brakes on five low-speed settings so you can keep your focus on navigating across difficult terrain.

Off-roading is inherently dangerous. Abusive use may result in bodily harm or vehicle damage. Wear seatbelts at all times and do not allow passengers in cargo area.



Locking Rear Differential

To help you negotiate uncertain terrain, 4Runner's available electronically controlled locking rear differential distributes engine power evenly to both rear wheels, so they move at the same speed, even if one is off the ground.⁴



Kinetic Dynamic Suspension System (KDSS)

When taking on extreme off-road terrain, 4Runner's available Kinetic Dynamic Suspension System (KDSS) automatically decouples the sway bars as needed, helping improve wheel articulation.

See numbered footnotes in Disclosures section.



Trail Special Edition

With black badging and dark gray wheels, Trail Special Edition is ready to gear up and get out. Its custom-branded and removable 40-qt. cooler with tie-down straps keeps things cool while you're burning up the trails. And with features such as a sliding cargo deck and Yakima® LoadWarrior cargo basket, you can bring your tent, sleeping bags and other gear with you out on the trails.^{4,6}

Off-roading is inherently dangerous. Abusive use may result in bodily harm or vehicle damage. Wear seatbelts at all times and do not allow passengers in cargo area.

UTILITY

Designed for the long haul.

4Runner's rugged capability gives you the confidence to take on the world's wildest terrain.⁴ And it's loaded with versatile features that come in handy when it's just you and the trail.

LED headlights and fog lights

Driving home from the trail after dusk, 4Runner's standard LED headlights shine bright. And when driving with reduced visibility, 4Runner's standard LED fog lights help give you a clearer view of what's ahead.

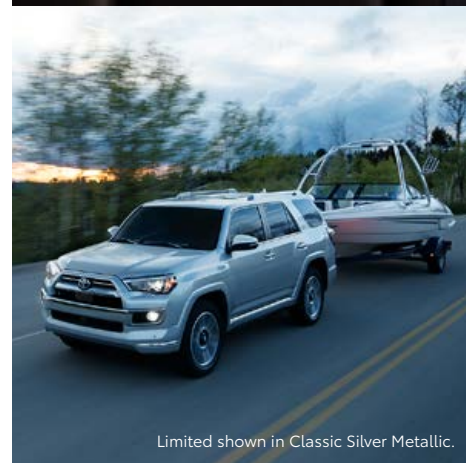
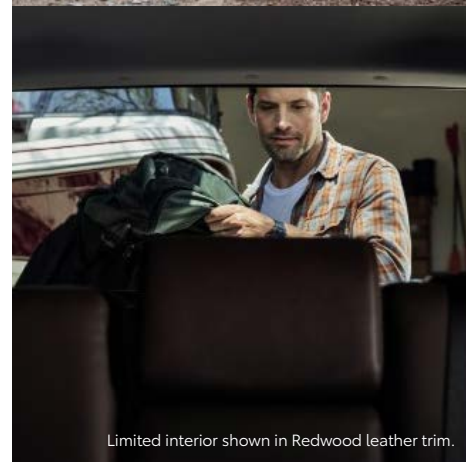
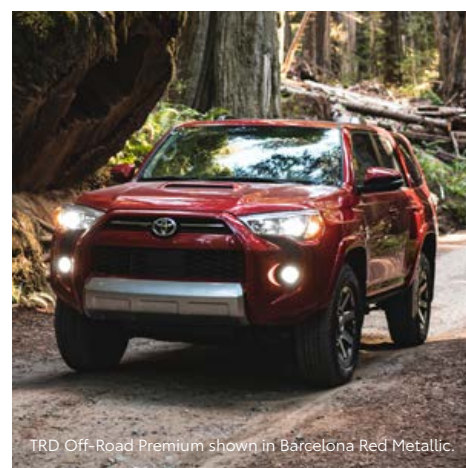
Power rear glass

A signature element found across all generations of 4Runner, this power rear glass raises and lowers with the push of a button, making it easier to grab your gear from the cargo area. And best of all, it's standard.

Towing capability

With 4Runner's ability to tow up to 5000 lbs.,⁷ venturing into some of nature's toughest ranges doesn't mean you have to leave everything behind.

See numbered footnotes in Disclosures section.





Flow-form wheels and all-terrain tires

Crawl through rocks, dirt and mud in style.⁴ TRD Pro's flow-form 17-in. wheels come wrapped in Nitto^{®8} Terra Grappler^{®9} all-terrain tires for more on-road comfort and enhanced off-road traction.

TRD PRO

Tame wilder terrain.

4Runner TRD Pro is ready to take your adventures to the next level. Boasting a heritage-inspired grille, TRD Pro badging, and a ¼-in.-thick aluminum skid plate, this rugged body-on-frame SUV fears no trail.⁴



TRD-tuned FOX[®] shocks and TRD-tuned suspension

4Runner TRD Pro's suspension features oversize FOX^{®10} high-performance shocks — with remote reservoirs on the rear shocks — and TRD-tuned front springs to help carry you over unforgiving terrain.



Wider style

The bark to match the powerful V6 bite. This black-chrome cat-back exhaust is constructed from stainless steel, and its precise CNC mandrel bends help maximize efficiency.

See numbered footnotes in Disclosures section.

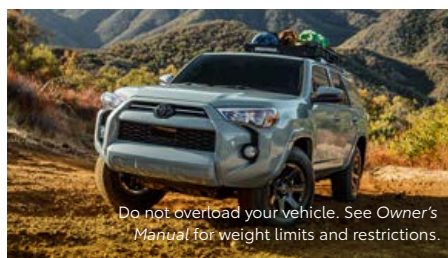
EXTERIOR

Turn heads on the trail.

At first glance, there's no doubt what this rig is capable of. From its aggressive front grille to its iconic badging, 4Runner's adventurous spirit is seen in every detail.



TRD Off-Road Premium shown in Barcelona Red Metallic. Off-roading is inherently dangerous. Abusive use may result in bodily harm or vehicle damage. Wear seatbelts at all times and do not allow passengers in cargo area. Do not overload your vehicle. See Owner's Manual for weight limits and restrictions.



Do not overload your vehicle. See Owner's Manual for weight limits and restrictions.



TRD Sport

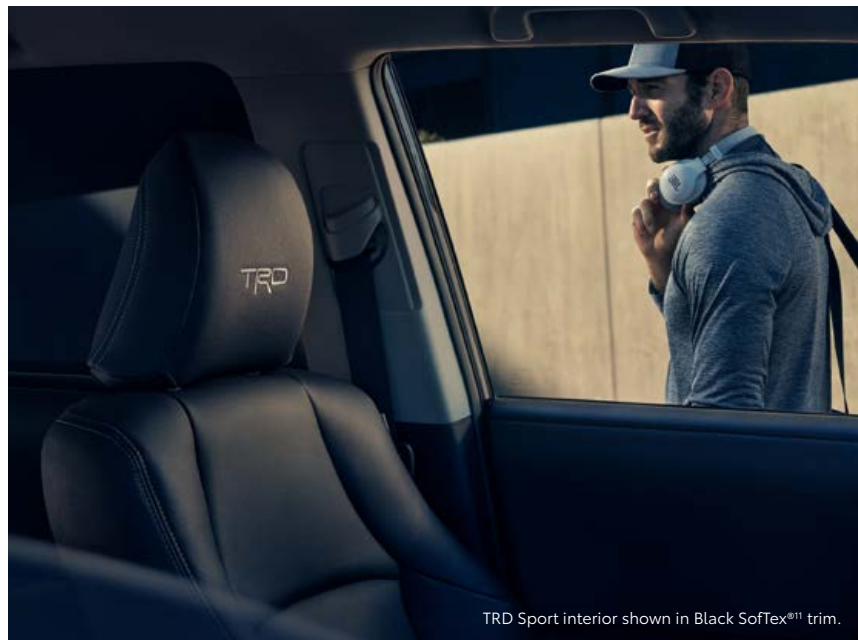
4Runner TRD Sport scores style points with its commanding front grille, sporty hood scoop and color-keyed body details. One look at the TRD Sport badge and everyone knows this 4Runner is ready to get after it.

Iconic style

Looking its best with a fresh coat of mud, 4Runner's trail-ready toughness and cutting-edge style have made it an off-road icon.⁴

Limited grade

20-in. wheels, chrome body accents and a striking front fascia give 4Runner Limited a refined presence. Inside, it's all decked out with creature comforts, like leather-trimmed seats and a 15-speaker JBL^{®12} audio system. And staying true to its name, Limited is loaded with the proven capability features 4Runner is known for, like its standard X-REAS Sport Enhancement Suspension and available full-time 4WD.



TRD Sport interior shown in Black SofTex[®] trim.

INTERIOR

Rugged, yet refined.

Inside, it's the perfect balance of resourceful and refined. And behind the wheel, 4Runner's 8-in. high-resolution touchscreen makes your playlist, navigation settings and more all look stunning.

4Runner's signature touches

Take a seat inside TRD Sport, and the SofTex[®]-trimmed¹¹ seats with gray contrast stitching fit you like a glove. Custom-made details like its gray TRD lettering stitched on the front headrests and shift knob hint that this rig is ready to go all in.

Full-fold seats

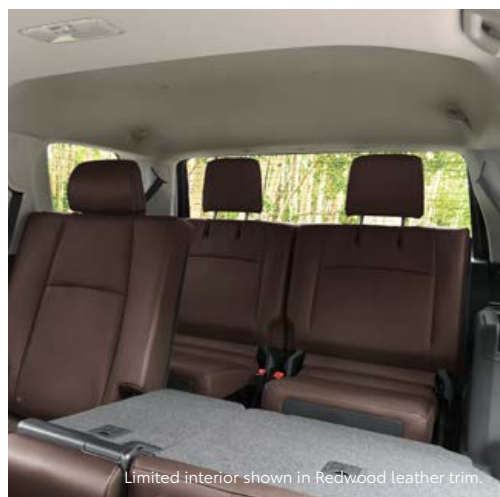
With 4Runner's 40/20/40 fold-flat second-row seats, you can make room for everything you need by folding one or all three seats down to accommodate up to 88.8 cubic feet of cargo.¹

Sliding rear cargo deck

4Runner's available sliding rear cargo deck can support up to 440 lbs. and makes loading and unloading a breeze.¹

Power moonroof

4Runner's available power tilt/slide moonroof brings you closer to the great outdoors, without even leaving your seat.



Limited interior shown in Redwood leather trim.



Trail Special Edition shown in Lunar Rock.



TRD Off-Road Premium shown in Black SofTex[®] trim.

SAFETY

Feel safe anywhere.

Wherever your adventures take you, you can feel at home knowing 4Runner's advanced safety features have your back.



TRD Off-Road Premium shown in Barcelona Red Metallic.

Eight standard airbags

A driver and front passenger Advanced Airbag System, driver and front passenger TAP (Thorax, Abdomen, Pelvis) front seat-mounted side airbags, driver and front passenger knee airbags and all-row (third-row airbags on models so equipped) Roll-sensing Side Curtain Airbags (RSCA)¹³ are all part of a system designed to help keep you safe.



Integrated backup camera

When backing up, the area visible to the camera is displayed on the 8-in. touchscreen.¹⁴ 4Runner's available front and rear parking assist sonar¹⁵ beeps to tell you how close the bumpers are from a detected object. And 4Runner's available Panoramic View Monitor (PVM) uses cameras on the front, sides, and rear to give you a 360-degree view of what's going on outside.



Tire Pressure Monitor System

When riding over sand or powering through mud,⁴ there's one thing you can't live without: tire pressure. 4Runner's advanced Tire Pressure Monitor System (TPMS)¹⁶ sends you a notification when it detects the PSI level is low. That way, you can take care of your tires and get back to taking on the trails.



TRD Off-Road Premium shown in Barcelona Red Metallic.

Side-impact door beams

4Runner's side-impact door beams are designed to help keep everyone inside safe by absorbing the energy created during a collision from the side.

Amplify your drive.

Take advantage of smarter and convenient technologies designed to simplify your everyday life. From a suite of services that are there for you 24/7 to an immersive audio multimedia system, you can stay connected to your world.



Connected Services

Our available suite of Connected Services¹⁷ provides added convenience and peace of mind.

- ✓ **Safety Connect®**
Emergency SOS assistance and 24/7 Toyota Roadside Assistance.^{18,19}
- ✓ **Service Connect**
Get personalized maintenance updates and vehicle health reports.²⁰
- ✓ **Remote Connect**
Start, lock/unlock your doors and more, using your compatible smart device.²¹
- ✓ **Wi-Fi Connect**
Turn your Toyota into a hotspot with 4G connectivity.²²
- ✓ **Destination Assist**
24/7 live agent assistance to locate your next destination.²³

To view included trial details, please visit toyota.com/connected-services.

Audio Multimedia

Make every drive more personal. By utilizing your vehicle's touchscreen display and audio multimedia capabilities, you'll always have access to what you want. Whether it's listening to your favorite playlist or finding the most scenic route to your destination, you'll enjoy the latest in connectivity and technologies that are all about you.



Apple CarPlay®

Bring along a familiar face. With Apple CarPlay²⁴ compatibility, you can use your compatible iPhone²⁵ with the audio multimedia system to get directions, make calls, send and receive messages, and listen to music — all while staying focused on your commute.



Android Auto™

Stay connected on the road. By pairing your compatible Android^{TM26} phone with the audio multimedia system, Android Auto^{TM27} lets you access your Google Assistant, get real-time traffic alerts, make and receive phone calls, listen to your favorite soundtrack and more.



SiriusXM® w/3-month Platinum Plan trial subscription

SiriusXM²⁸ has premium entertainment that you won't hear anywhere else. With the Platinum Plan, you get 350+ channels, including 165+ channels in your vehicle, to enjoy ad-free music, plus sports, news, talk, comedy and more.²⁹



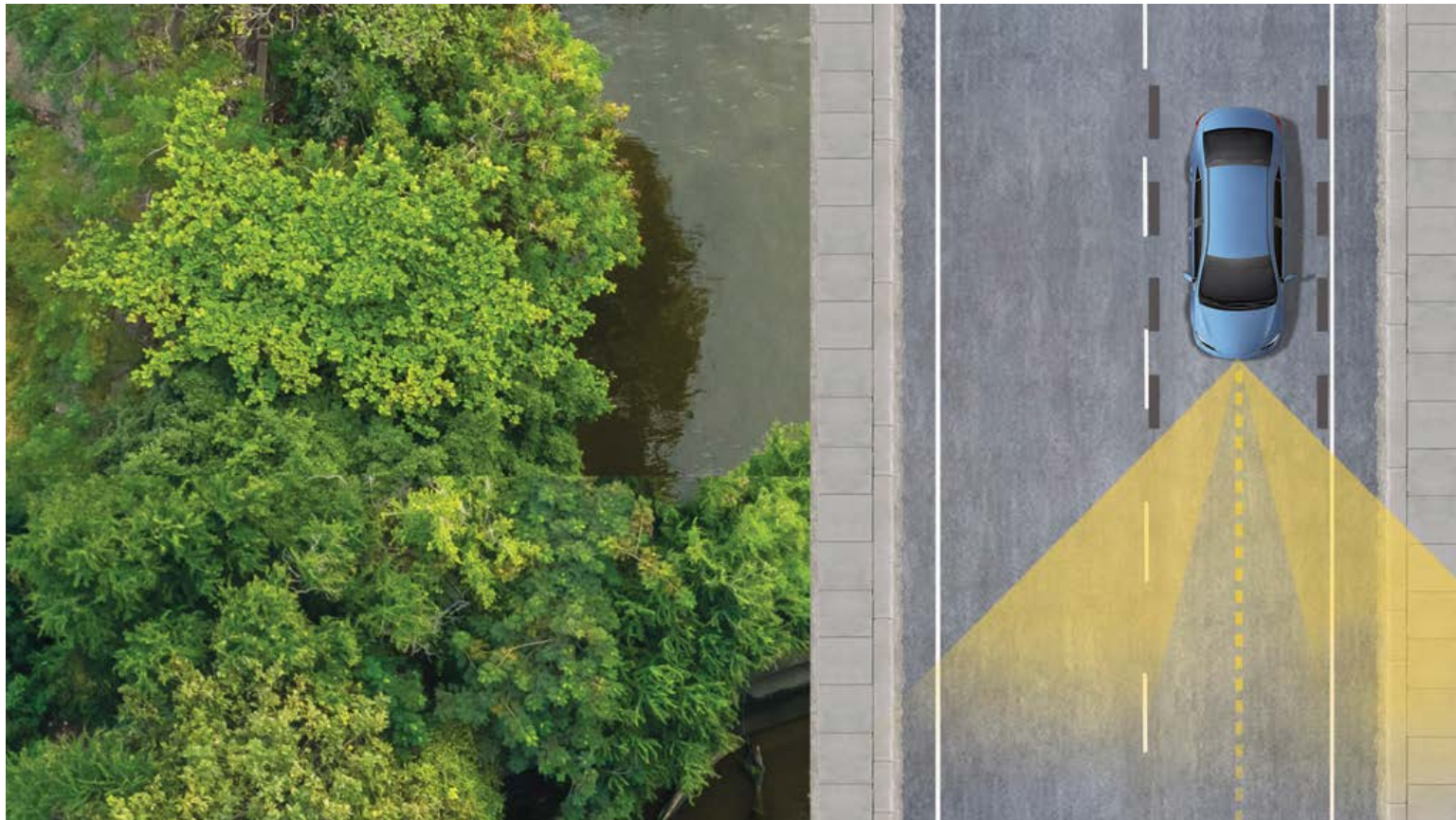
Amazon Alexa

Almost anywhere the road takes you, Amazon Alexa³⁰ connectivity follows. With a smartphone connection and the Toyota+Alexa app, all you have to do is ask Alexa to play music, listen to audiobooks, hear the news, check weather, control smart-home devices and more.



JBL®

Feel the difference and hear the truth. Designed specifically for Toyota, JBL³¹ finely tunes each speaker to the interior of the vehicle. Just turn up the volume to hear the crisp, rich, vibrant sound come through.



TOYOTA SAFETY SENSE™ P (TSS-P)

Peace of mind comes standard.

Toyota Safety Sense™ P (TSS-P)³¹ is a bundle of active safety features included on many new Toyota vehicles at no additional cost. TSS-P's comprehensive features create in-the-moment safety designed to help protect you and your passengers from harm.



Pre-Collision System with Pedestrian Detection³²



Dynamic Radar Cruise Control³³



Lane Departure Alert³⁴



Automatic High Beams³⁵

4RUNNER MODELS



SR5

Includes these key features

Mechanical/Performance

- ✓ 4.0-Liter V6 with 270 hp
- ✓ 5-speed automatic transmission
- ✓ Rear-Wheel Drive (RWD)
- ✓ Automatic Limited-Slip Differential
- ✓ Available part-time 4WD system with Active Traction Control (A-TRAC)
- ✓ Hill Start Assist Control (HAC)³ and available Downhill Assist Control (DAC)³⁶
- ✓ Up to 16 city/19 highway/17 combined est. mpg³⁷

Exterior Features

- ✓ LED headlights
- ✓ LED fog lights
- ✓ LED taillights
- ✓ Skid plates — on engine/front suspension, fuel tank and transfer case (transfer case on 4x4 models only)
- ✓ 17-in. 6-spoke alloy wheels with P265/70R17 tires
- ✓ Heated power outside mirrors

Interior Features

- ✓ Smart Key System³⁸ with Push Button Start and remote illuminated entry
- ✓ Backup camera¹⁴ with projected path
- ✓ Fabric-trimmed seats
 - 8-way power-adjustable driver's seat with power lumbar support
 - 4-way adjustable front passenger seat
 - 40/20/40 split reclining and fold-flat second-row seat
- ✓ Leather-trimmed tilt/telescopic steering wheel with audio and Bluetooth^{®39} hands-free phone and voice command controls
- ✓ Three (one front-row and two second-row) USB ports⁴⁰
- ✓ Two (one front and one cargo area) 12V DC auxiliary power outlets⁴¹
- ✓ One (cargo area) 120V 100W/400W AC power outlet⁴²

Audio Multimedia

- ✓ Audio includes:
 - 8.0-in. touchscreen and eight speakers
 - Android Auto^{™27} & Apple CarPlay^{®24} compatible
 - SiriusXM^{®28} with 3-month Platinum Plan trial subscription²⁹
- ✓ Connected Services¹⁷ trials, including Safety Connect^{®18} and Wi-Fi Connect²²

Safety Features

- ✓ Toyota Safety Sense[™] P (TSS-P)³¹
- ✓ Star Safety System[™]
- ✓ Eight airbags¹³

Packages/Options

- ✓ Premium Audio Package includes:
 - 8.0-in. touchscreen and eight speakers
 - Dynamic Navigation⁴³ with Destination Assist²³
 - Android Auto^{™27} & Apple CarPlay^{®24} compatible
 - SiriusXM^{®28} with 3-month Platinum Plan trial subscription²⁹
 - HD Radio^{™44}
- ✓ Running boards
- ✓ 50/50 split fold-flat third-row seat and sliding second row with passenger-side one-touch access to third-row seat
- ✓ Sliding rear cargo deck with under-floor storage box



Trail Special Edition

Adds to or replaces features offered on SR5

Mechanical/Performance

- ✓ Available part-time 4WD system with Active Traction Control (A-TRAC)
- ✓ Hill Start Assist Control (HAC)³ and available Downhill Assist Control (DAC)³⁶
- ✓ Up to 16 city/19 highway/17 combined est. mpg³⁷

Exterior Features

- ✓ Yakima[®] LoadWarrior cargo basket
- ✓ 17-in. dark gray alloy wheels with P265/70R17 tires
- ✓ Black external emblem overlays

Interior Features

- ✓ Black fabric seating with unique tan accent stitch
- ✓ Cargo area 40-qt. premium accessory cooler with tie-down straps
- ✓ All-weather floor liners⁴⁷
- ✓ Sliding rear cargo deck with under-floor storage compartment

Safety Features

- ✓ Toyota Safety Sense[™] P (TSS-P)³¹
- ✓ Star Safety System[™]
- ✓ Eight airbags¹³

Packages/Options

- ✓ Premium Audio Package includes:
 - 8.0-in. touchscreen and eight speakers
 - Dynamic Navigation⁴³ with Destination Assist²³
 - Android Auto^{™27} & Apple CarPlay^{®24} compatible
 - SiriusXM^{®28} with 3-month Platinum Plan trial subscription²⁹
 - HD Radio^{™44}
- ✓ Running boards



TRD Sport

Adds to or replaces features offered on SR5

Mechanical/Performance

- ✓ Available part-time 4WD system with Active Traction Control (A-TRAC)
- ✓ X-REAS Sport Enhancement Suspension
- ✓ Hill Start Assist Control (HAC)³ and available Downhill Assist Control (DAC)³⁶
- ✓ Up to 16 city/19 highway/17 combined est. mpg³⁷

Exterior Features

- ✓ Color-keyed TRD hood scoop
- ✓ "TRD Sport" badge on C-pillars

Interior Features

- ✓ SofTex[®]-trimmed¹¹ seats
 - 8-way power-adjustable driver's seat with power lumbar support
 - 40/20/40 split reclining and fold-flat second-row seat
- ✓ TRD shift knob
- ✓ TRD Sport carpet floor mats⁴⁷
- ✓ "TRD" gray lettering on driver and front passenger headrests

Safety Features

- ✓ Toyota Safety Sense[™] P (TSS-P)³¹
- ✓ Star Safety System[™]
- ✓ Eight airbags¹³

Packages/Options

- ✓ Technology Package — Blind Spot Monitor (BSM)⁴⁵ with Rear Cross-Traffic Alert (RCTA)⁴⁶
- ✓ Premium Audio Package includes:
 - 8.0-in. touchscreen and eight speakers
 - Dynamic Navigation⁴³ with Destination Assist²³
 - Android Auto^{™27} & Apple CarPlay^{®24} compatible
 - SiriusXM^{®28} with 3-month Platinum Plan trial subscription²⁹
 - HD Radio^{™44}
- ✓ Sliding rear cargo deck with under-floor storage box
- ✓ Panoramic View Monitor
- ✓ Automatic running boards

4RUNNER MODELS



SR5 Premium

Adds to or replaces features offered on SR5

Mechanical/Performance

- ✓ Available part-time 4WD system with Active Traction Control (A-TRAC)
- ✓ Hill Start Assist Control (HAC)³ and available Downhill Assist Control (DAC)³⁶
- ✓ Up to 16 city/19 highway/17 combined est. mpg³⁷

Exterior Features

- ✓ Heated power outside mirrors with turn signal indicators

Interior Features

- ✓ SofTex[®]-trimmed¹¹ seats
 - Heated front seats
 - 8-way power-adjustable driver's seat with power lumbar support
 - 4-way power-adjustable front passenger seat
 - 40/20/40 split reclining and fold-flat second-row seat
- ✓ Auto-dimming rearview mirror

Audio Multimedia

- ✓ Premium Audio includes:
 - 8.0-in. touchscreen and eight speakers
 - Dynamic Navigation⁴³ with Destination Assist²³
 - Android Auto^{TM27} & Apple CarPlay^{®24} compatible
 - SiriusXM^{®28} with 3-month Platinum Plan trial subscription²⁹
 - HD Radio^{TM44}
- ✓ Connected Services¹⁷ trials, including Safety Connect^{®18} and Wi-Fi Connect²²

Safety Features

- ✓ Toyota Safety SenseTM P (TSS-P)³¹
- ✓ Star Safety SystemTM
- ✓ Eight airbags¹³

Options

- ✓ SR5 Premium Plus Package includes:
 - Panoramic View Monitor
- ✓ Power tilt/slide moonroof with sunshade
- ✓ Running boards
- ✓ SofTex[®]-trimmed¹¹ 50/50 split fold-flat third-row seat and sliding second row with passenger-side one-touch access to third-row seat
- ✓ Sliding rear cargo deck with under-floor storage box



TRD Off-Road

Adds to or replaces features offered on SR5

Mechanical/Performance

- ✓ Part-time 4WD system with Active Traction Control (A-TRAC)
- ✓ Hill Start Assist Control (HAC)³ and Multi-Terrain Select (MTS) and Crawl Control (CRAWL)⁵
- ✓ Locking rear differential
- ✓ Up to 16 city/19 highway/17 combined est. mpg³⁷

Exterior Features

- ✓ 17-in. 7-spoke alloy wheels with black-painted accents and P265/70R17 tires
- ✓ Color-keyed front and rear bumpers with silver accents and color-keyed hood scoop
- ✓ "TRD Off-Road" external hard badges

Interior Features

- ✓ Overhead console with Multi-Terrain Select (MTS) and Crawl Control (CRAWL)⁵ switches
- ✓ TRD shift knob
- ✓ TRD Off-Road floor mats⁴⁷

Audio Multimedia

- ✓ Audio Plus includes:
 - 8.0-in. touchscreen and eight speakers
 - Android Auto^{TM27} & Apple CarPlay^{®24} compatible
 - SiriusXM^{®28} with 3-month Platinum Plan trial subscription²⁹
 - HD Radio^{TM44}
- ✓ Connected Services¹⁷ trials, including Safety Connect^{®18} and Wi-Fi Connect²²

Safety Features

- ✓ Toyota Safety SenseTM P (TSS-P)³¹
- ✓ Star Safety SystemTM
- ✓ Eight airbags¹³

Packages/Options

- ✓ Premium Audio Package includes:
 - 8.0-in. touchscreen and eight speakers
 - Dynamic Navigation⁴³ with Destination Assist²³
 - Android Auto^{TM27} & Apple CarPlay^{®24} compatible
 - SiriusXM^{®28} with 3-month Platinum Plan trial subscription²⁹
 - HD Radio^{TM44}
- ✓ Running boards
- ✓ Kinetic Dynamic Suspension System (KDSS)
- ✓ Sliding rear cargo deck with under-floor storage box
- ✓ Premium Audio with Dynamic Navigation⁴³ and Destination Assist²³



TRD Off-Road Premium

Adds to or replaces features offered on TRD Off-Road

Mechanical/Performance

- ✓ Part-time 4WD system with Active Traction Control (A-TRAC)
- ✓ Hill Start Assist Control (HAC)³ and Multi-Terrain Select (MTS) and Crawl Control (CRAWL)⁵
- ✓ Locking rear differential
- ✓ Up to 16 city/19 highway/17 combined est. mpg³⁷

Exterior Features

- ✓ Heated power outside mirrors with turn signal indicators

Interior Features

- ✓ SofTex[®]-trimmed¹¹ seats
 - Heated front seats
 - 8-way power-adjustable driver's seat with power lumbar support
 - 4-way power-adjustable front passenger seat
 - 40/20/40 split reclining and fold-flat second-row seat
- ✓ "TRD" red lettering on driver and front passenger headrests
- ✓ Auto-dimming rearview mirror

Audio Multimedia

- ✓ Premium Audio includes:
 - 8.0-in. touchscreen and eight speakers
 - Dynamic Navigation⁴³ with Destination Assist²³
 - Android Auto^{TM27} & Apple CarPlay^{®24} compatible
 - SiriusXM^{®28} with 3-month Platinum Plan trial subscription²⁹
 - HD Radio^{TM44}
- ✓ Connected Services¹⁷ trials, including Safety Connect^{®18} and Wi-Fi Connect²²

Safety Features

- ✓ Toyota Safety SenseTM P (TSS-P)³¹
- ✓ Star Safety SystemTM
- ✓ Eight airbags¹³

Options

- ✓ Off-Road Premium Plus Package includes:
 - Multi-Terrain Monitor (MTM)²
- ✓ Power tilt/slide moonroof with sunshade
- ✓ Running boards
- ✓ Kinetic Dynamic Suspension System (KDSS)
- ✓ Sliding rear cargo deck with under-floor storage box

4RUNNER MODELS



Limited

Adds to or replaces features offered on SR5 Premium

Mechanical/Performance

- ✓ Available full-time 4WD system with Active Traction Control (A-TRAC) and Torsen®⁴⁸ limited-slip center differential with locking feature
- ✓ X-REAS Sport Enhancement Suspension
- ✓ Up to 16 city/19 highway/17 combined est. mpg³⁷

Exterior Features

- ✓ Power tilt/slide moonroof with sunshade
- ✓ 20-in. split 6-spoke alloy wheels with P245/60R20 tires
- ✓ Front and rear parking assist sonar¹⁵
- ✓ Color-keyed front and rear bumpers and side rocker panels with chrome inserts, chrome door handles and chrome-accented front grille insert

Interior Features

- ✓ Dual zone automatic climate control with air filter and second-row vents
- ✓ Perforated leather-trimmed seats
 - Heated and ventilated front seats
 - 8-way power-adjustable driver's seat with memory function and power lumbar support
 - 4-way adjustable front passenger seat

Audio Multimedia

- Premium Audio with JBL®¹² includes:
 - 8.0-in. touchscreen and 15 JBL®¹² speakers
 - Dynamic Navigation⁴³ with Destination Assist²³
 - Android Auto™²⁷ & Apple CarPlay®²⁴ compatible
 - SiriusXM®²⁸ with 3-month Platinum Plan trial subscription²⁹
 - HD Radio™⁴⁴
- ✓ Connected Services¹⁷ trials, including Safety Connect®,¹⁸ Service Connect,²⁰ Remote Connect²¹ and Wi-Fi Connect²²

Safety Features

- ✓ Toyota Safety Sense™ P (TSS-P)³¹
- ✓ Star Safety System™
- ✓ Eight airbags¹³

Options

- ✓ Automatic running boards
- ✓ Leather-trimmed 50/50 split fold-flat third-row seat and sliding second row with passenger-side one-touch access to third row
- ✓ Sliding rear cargo deck with under-floor storage box



TRD Pro

Includes these key features

Mechanical/Performance

- ✓ 4.0-Liter V6 with 270 hp
- ✓ 5-speed automatic transmission
- ✓ Part-time 4WD system with Active Traction Control (A-TRAC)
- ✓ Hill Start Assist Control (HAC)³ and Multi-Terrain Select (MTS) and Crawl Control (CRAWL)⁵
- ✓ TRD FOX®¹⁰ high-performance shocks with rear remote reservoirs
- ✓ TRD-tuned front springs
- ✓ Locking rear differential
- ✓ Up to 16 city/19 highway/17 combined est. mpg³⁷

Exterior Features

- ✓ High-performance LED fog lights
- ✓ Black "TRD PRO" external hard badges
- ✓ Unique "TOYOTA" front grille
- ✓ Black roof basket
- ✓ Power tilt/slide moonroof with sunshade
- ✓ TRD-stamped aluminum front skid plate
- ✓ TRD 17-in. matte-black alloy wheels with P265/70R17 A/T tires

Interior Features

- ✓ Dual zone automatic climate control with air filter and second-row vents
- ✓ Smart Key System³⁶ with Push Button Start and remote illuminated entry
- ✓ Overhead console with Multi-Terrain Select (MTS) and Crawl Control (CRAWL)⁵ switches
- ✓ SofTex®-trimmed¹¹ seats
 - Heated front seats
 - 8-way power-adjustable driver's seat with power lumbar support
 - 4-way power-adjustable front passenger seat
 - 40/20/40 split reclining and fold-flat second-row seat
- ✓ "TRD" red lettering on driver and front passenger headrests
- ✓ TRD Pro all-weather floor liners⁴⁷
- ✓ TRD shift knob

Audio Multimedia

- ✓ Premium Audio with JBL®¹² includes:
 - 8.0-in. touchscreen and 15 JBL®¹² speakers
 - Dynamic Navigation⁴³ with Destination Assist²³
 - Android Auto™²⁷ & Apple CarPlay®²⁴ compatible
 - SiriusXM®²⁸ with 3-month Platinum Plan trial subscription²⁹
 - HD Radio™⁴⁴
- ✓ Connected Services¹⁷ trials, including Safety Connect®,¹⁸ Service Connect,²⁰ Remote Connect²¹ and Wi-Fi Connect²²

Safety Features

- ✓ Toyota Safety Sense™ P (TSS-P)³¹
- ✓ Star Safety System™
- ✓ Eight airbags¹³

Options

- ✓ Running boards
- ✓ Sliding rear cargo deck with under-floor storage box

4RUNNER COLORS & TRIMS



Midnight Black Metallic



Nautical Blue Metallic



Army Green



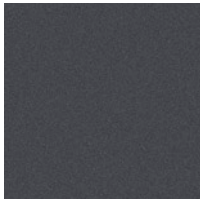
Lunar Rock



Lime Rush



Barcelona Red Metallic



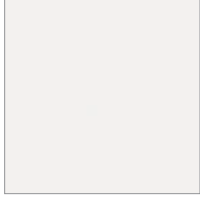
Magnetic Gray Metallic



Classic Silver Metallic



Blizzard Pearl⁴⁹

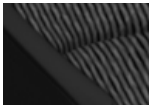


Ice Cap

SR5 fabric



Sand Beige



Graphite

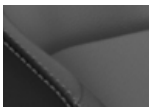
Trail Special Edition fabric in Graphite



SR5 SofTex^{®11} trim

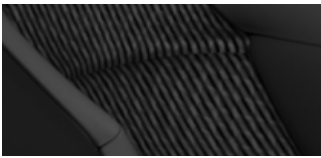


Sand Beige



Graphite

TRD Off-Road fabric in Black



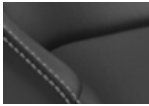
TRD Off-Road/TRD Pro SofTex^{®11} trim in Black



Limited leather trim in Redwood



Sand Beige



Black

TRD Sport SofTex^{®11} trim in Black



See numbered footnotes in Disclosures section.

4RUNNER WHEELS



SR5: 17-in. 6-spoke alloy wheel



Trail Special Edition: 17-in. dark gray alloy wheel



TRD Sport: 20-in. split 6-spoke alloy wheel



TRD Off-Road: 17-in. 7-spoke alloy wheel



Limited: 20-in. split 6-spoke alloy wheel



TRD Pro: TRD 17-in. matte-black alloy wheel

4RUNNER ACCESSORIES

This is a great way to add extra personality to your 4Runner. Not every accessory is available in your area, so for a complete list of accessories, go to toyota.com/4runner/accessories.



Cargo tray¹



Roof rack cross bars



All-weather floor liners⁴⁷



Predator tube step



Blackout emblem overlays



Black chrome exhaust tip



TRD 17-in. matte-black alloy wheels



Mudguards



In-vehicle safe by Console Vault®

WARRANTIES

Every Toyota Car, Truck and SUV is built to exceptional standards. And that's not idle boasting. We back it up with these Limited Warranty Coverages:

Basic: 36 months/36,000 miles (all components other than normal wear and maintenance items).

Powertrain: 60 months/60,000 miles (engine, transmission/transaxle, drive system, seatbelts and airbags).

Rust-Through: 60 months/unlimited miles (corrosion perforation of sheet metal).

Emissions: Coverages vary under Federal and California regulations. Refer to applicable *Warranty and Maintenance Guide* for details.

Accessories: For Genuine Toyota Accessories purchased at the time of the new vehicle purchase, the Toyota Accessory Warranty coverage is in effect for 36 months/36,000 miles from the vehicle's in-service date, which is the same coverage as the Toyota New Vehicle Limited Warranty.

For Genuine Toyota Accessories purchased after the new vehicle purchase the coverage is 12 months, regardless of mileage, from the date the accessory was installed on the vehicle, or the remainder of any applicable new vehicle warranty, whichever provides greater coverage.

You may be eligible for transportation assistance if it's necessary that your vehicle be kept overnight for repairs covered under warranty. Please see your authorized Toyota dealership for further details.

For complete details about Toyota's warranties, please visit www.toyota.com, refer to the applicable *Warranty and Maintenance Guide* or see your Toyota dealer.

4RUNNER FEATURES⁵⁰

S = Standard O = Optional

Exterior	SR5	Trail Special Edition	TRD Sport	SR5 Premium	TRD Off-Road	TRD Off-Road Premium	Limited	TRD Pro
LED headlights	S	S	S	S	S	S	S	S
Auto on/off headlights							S	S
LED high beams							S	S
LED fog lights	S	S	S	S	S	S	S	S
LED taillights	S	S	S	S	S	S	S	S
Skid plate covering engine and front suspension	S	S	S	S	S	S	S	S
Skid plate covering transfer case (4x4 only)					S	S		S
TRD Pro-stamped front aluminum skid plate								S
17-in. 6-spoke alloy wheels with P265/70R17 tires	S			S				
17-in. dark gray alloy wheels with P265/70R17 tires		S						
17-in. 7-spoke alloy wheels with black accents and P265/70R17 tires					S	S		
17-in. matte-black flow-form TRD alloy wheels with P265/70R17 A/T tires								S
20-in. split 6-spoke alloy wheels with P245/60R20 tires			S				S	
Heated power outside mirrors	S	S	S		S			S
Heated power outside mirrors with turn signal indicators				S		S	S	
Roof rails	S	S	S	S	S	S	S	
Yakima® LoadWarrior cargo basket		S						
TRD roof rack								S
Unique “TOYOTA” front grille								S
Black “TRD PRO” external hard badges								S
“TRD Off-Road” external hard badges					S	S		
“TRD Sport” badge on C-pillars			S					
Chrome “SR5” external hard badges	S	S		S				
Chrome “Limited” external hard badges							S	
Black external emblem overlays		S						
Chrome door handles with touch-sensor lock/unlock feature							S	
Aerodynamic variable intermittent windshield wipers with mist cycle	S	S	S	S	S	S	S	S
Windshield wiper de-icer	S	S	S	S	S	S	S	S
Front and rear mudguards	S	S	S	S	S	S		S
Power windows with auto up/down and jam protection in all positions	S	S	S	S	S	S	S	S
Power rear liftgate window with auto up/down and jam protection	S	S	S	S	S	S	S	S
Rear liftgate window defogger with timer and UV protection	S	S	S	S	S	S	S	S

Interior

Privacy glass on rear side, quarter and rear liftgate windows	S	S	S	S	S	S	S	S
Power tilt/slide moonroof with sunshade				O		O	S	S
Color-keyed rear spoiler with center LED high-mount stop light and integrated concealed rear wiper with mist cycle	S	S	S	S	S	S	S	S
Power door locks with programmable auto-door lock logic	S	S	S	S	S	S	S	S
In-key remote keyless entry system	S	S	S	S	S	S	S	S
Smart Key System ³⁸ with Push Button Start and remote illuminated entry	S	S	S	S	S	S	S	S
Automatic running boards			O				O	
Running boards	O	O	O	O	O	O		O
Air conditioning with air filter and second-row vents	S	S	S	S	S	S		
Dual zone automatic climate control with air filter and second-row vents							S	S
Backup camera ¹⁴ with projected path	S	S	S	S	S	S	S	S
Multi-Terrain Monitor (MTM) ² with selectable front, side or rear views								S
Fabric-trimmed front seats; 8-way power-adjustable driver's seat with power lumbar support; 4-way adjustable front passenger seat	S	S			S			
Black fabric seating with unique tan accent stitch	S							
Fabric-trimmed 40/20/40 split reclining and fold-flat second-row seat	S	S			S			
Fabric-trimmed 50/50 split fold-flat third-row seat and sliding second-row with passenger-side one-touch access to third-row seat	O							
SofTex®-trimmed, ¹¹ 8-way power-adjustable driver's seat with power lumbar support			S					
SofTex®-trimmed, ¹¹ heated front seats; 8-way power-adjustable driver's seat with power lumbar support; 4-way power-adjustable front passenger seat				S		S		S
SofTex®-trimmed ¹¹ 40/20/40 split reclining and fold-flat second-row seat			S	S		S		S
SofTex®-trimmed ¹¹ 50/50 split fold-flat third-row seat and sliding second-row with passenger-side one-touch access to third-row seat				O				
“TRD” red lettering on driver and front passenger headrests						S		S
“TRD” gray lettering on driver and front passenger headrests			S					

See numbered footnotes in Disclosures section.

Interior (continued)	SR5	Trail Special Edition	TRD Sport	SR5 Premium	TRD Off-Road	TRD Off-Road Premium	Limited	TRD Pro
Perforated leather-trimmed, heated and ventilated front seats; 8-way power-adjustable driver's seat with memory function and power lumbar support; 4-way power-adjustable front passenger seat							S	
Perforated leather-trimmed 40/20/40 split reclining and fold-flat second-row seat							S	
Leather-trimmed 50/50 split fold-flat third-row seat and sliding second-row with passenger-side one-touch walk-in function							O	
Sliding rear cargo deck with under-floor storage compartment	O	S	O	O	O	O	O	O
Cargo area 40-qt. premium accessory cooler with tie-down straps		S						
Accessory cargo net ¹				S		S	S	S
Center console storage compartment with coin, tissue and pen holders	S	S	S	S			S	
Center console storage compartment with coin, tissue and pen holders with carbon-fiber pattern					S	S		S
Overhead console with sunglasses storage	S	S	S	S			S	
Overhead console with Multi-Terrain Select (MTS) and Crawl Control (CRAWL) ⁵ switches					S	S		S
Optitron instrumentation with speedometer, tachometer, coolant temperature and fuel gauges; LCD display with odometer, tripmeters and average fuel economy; Eco driving indicator and warning messages	S	S	S	S	S	S	S	S
Multi-Information Display (MID) with outside temperature, clock, average fuel economy and distance to empty	S	S	S	S	S	S	S	S
Leather-trimmed tilt/telescopic steering wheel with audio and Bluetooth ^{®39} hands-free phone and voice-command controls	S	S	S	S	S	S	S	S
HomeLink ^{®51} universal transceiver				S		S	S	S
Dual sun visors with illuminated vanity mirrors and extenders	S	S	S	S	S	S	S	S
Auto-dimming rearview mirror				S		S	S	S
Glare-resistant mechanical inside rearview mirror	S	S	S		S			
Ten (12 on three-row models) cup and bottle holders	S	S	S	S	S	S	S	
Two (one front and one cargo area) 12V DC auxiliary power outlets ⁴¹	S	S	S	S	S	S	S	S
Three (one front-row and two second-row) USB ports ⁴⁰	S	S	S	S	S	S	S	S
One (cargo area) 120V 100W/400W AC power outlet ⁴²	S	S	S	S	S	S	S	S
Gated shift lever with sequential shift mode	S	S	S	S	S	S	S	S
TRD shift knob			S		S	S		S
TRD Pro all-weather floor liners ⁴⁷								S
TRD Sport carpet floor mats			S					
TRD Off-Road floor mats ⁴⁷					S	S		
All-weather floor liners ⁴⁷		S						
Foot pedal parking brake	S	S	S	S	S	S	S	S
First aid kit	S	S	S	S	S	S	S	S

Audio Multimedia

Audio — 8-in. touchscreen, eight speakers, AM/FM radio, Android Auto^{™27} & Apple CarPlay^{®24} & Amazon Alexa³⁰ compatible, USB media port⁴⁰ three USB charge ports⁴⁰ advanced voice recognition;⁵² hands-free phone capability and music streaming³⁹ via Bluetooth^{®39} wireless technology, SiriusXM^{®28} with 3-month Platinum Plan trial subscription;²⁹ Connected Services¹⁷ — Safety Connect[®] with 1-year trial;⁸ Wi-Fi Connect with up to 2 GB within 3-month trial;²² See toyota.com/audio-multimedia for details.

S S S

Audio Plus — 8-in. touchscreen, eight speakers, AM/FM radio, HD Radio;^{™44} Android Auto^{™27} & Apple CarPlay^{®24} & Amazon Alexa³⁰ compatible, three USB charge ports⁴⁰ advanced voice recognition;⁵² hands-free phone capability and music streaming³⁹ via Bluetooth^{®39} wireless technology, SiriusXM^{®28} with 3-month Platinum Plan trial subscription;²⁹ Connected Services¹⁷ — Safety Connect[®] with 1-year trial;⁸ Wi-Fi Connect with up to 2 GB within 3-month trial;²² See toyota.com/audio-multimedia for details.

S

Premium Audio — 8-in. touchscreen, eight speakers, AM/FM radio, HD Radio;^{™44} Android Auto^{™27} & Apple CarPlay^{®24} & Amazon Alexa³⁰ compatible, three USB charge ports;⁴⁰ Dynamic Navigation⁴³ with up to 3-year trial;²³ includes Dynamic POI Search and Dynamic Voice Recognition;⁵⁴ advanced voice recognition;⁵² hands-free phone capability and music streaming³⁹ via Bluetooth^{®39} wireless technology, SiriusXM^{®28} with 3-month Platinum Plan trial subscription;²⁹ Connected Services¹⁷ — Safety Connect[®] with 1-year trial;¹⁸ Wi-Fi Connect with up to 2 GB within 3-month trial;²² Destination Assist with 1 year trial;²³ See toyota.com/audio-multimedia for details.

O O O

Premium Audio with JBL^{®12} Speakers — 8-in. touchscreen, 15 JBL^{®12} speakers including subwoofer and amplifier, AM/FM radio, HD Radio;^{™44} Android Auto^{™27} & Apple CarPlay^{®24} & Amazon Alexa³⁰ compatible, three USB charge ports;⁴⁰ Dynamic Navigation⁴³ with up to 3-year trial;²³ includes Dynamic POI Search and Dynamic Voice Recognition;⁵⁴ hands-free phone capability and music streaming³⁹ via Bluetooth^{®39} wireless technology, SiriusXM^{®28} with 3-month Platinum Plan trial subscription;²⁹ Connected Services¹⁷ — Safety Connect[®] with 1-year trial;¹⁸ Service Connect with 10-year trial;²⁰ Remote Connect with 1-year trial;²¹ Wi-Fi Connect with up to 2 GB within 3-month trial;²² Destination Assist with 1-year trial;²³ See toyota.com/audio-multimedia for details.

S

S

Safety and Convenience	SR5	Trail Special Edition	TRD Sport	SR5 Premium	TRD Off-Road	TRD Off-Road Premium	Limited	TRD Pro
Toyota Safety Sense™ P (TSS-P) ³¹ — Pre-Collision System with Pedestrian Detection (PCS w/PD); ³² Lane Departure Alert (LDA); ³⁴ Automatic High Beams (AHB); ³⁵ Dynamic Radar Cruise Control (DRCC) ³³	S	S	S	S	S	S	S	S
 Star Safety System™ — includes Vehicle Stability Control (VSC); ⁵⁵ Traction Control, Anti-lock Brake System (ABS) with Electronic Brake-force Distribution (EBD), Brake Assist (BA) ⁵⁶ and Smart Stop Technology® (SST) ⁵⁷	S	S	S	S	S	S	S	S
Driver and front passenger Advanced Airbag System ¹³	S	S	S	S	S	S	S	S
Eight airbags ¹³ — driver and front passenger TAP (Thorax, Abdomen, Pelvis) front seat-mounted side airbags, driver and front passenger knee airbags, and front and all row (third-row airbags on all models) Roll-sensing Side Curtain Airbags (RSCA)	S	S	S	S	S	S	S	S
Driver and front passenger active headrests ⁵⁸	S	S	S	S	S	S	S	S
Driver and front passenger seatbelt pretensioners with force limiters	S	S	S	S	S	S	S	S
3-point seatbelts for all seating positions; driver-side Emergency Locking Retractor (ELR) and Automatic/Emergency Locking Retractors (ALR/ELR) on all passenger belts	S	S	S	S	S	S	S	S
LATCH (Lower Anchors and Tethers for Children) includes lower anchors on outboard second-row seats and tether anchors on all second-row seats	S	S	S	S	S	S	S	S
Child-protector rear door locks and power window lockout	S	S	S	S	S	S	S	S
Side-impact door beams	S	S	S	S	S	S	S	S
Tire Pressure Monitor System (TPMS) ¹⁶	S	S	S	S	S	S	S	S
Daytime Running Lights (DRL) with manual on/off feature	S	S	S	S	S	S	S	S
Anti-theft system with engine immobilizer ⁵⁹	S	S	S	S	S	S	S	
Front and rear parking assist sonar ¹⁵							S	

Packages and Options

SR5 Premium Plus Package with SofTex®-trimmed ¹¹ seats and Panoramic View Monitor				O				
Off-Road Premium Plus Package with SofTex®-trimmed ¹¹ seats and Multi-Terrain Monitor (MTM) ²						O		
Technology Package — Blind Spot Monitor (BSM) ⁴⁵ with Rear Cross-Traffic Alert (RCTA) ⁴⁶			O					
Kinetic Dynamic Suspension System (KDSS)					O	O		
Sliding rear cargo deck with under-floor storage compartment	O		O	O	O	O	O	O
Panoramic View Monitor			O	O		O	S	S
Audio Plus — 8-in. touchscreen, eight speakers, AM/FM radio, HD Radio, ^{TM44} Android Auto ^{TM27} & Apple CarPlay ^{®24} & Amazon Alexa ³⁰ compatible, USB media port, ⁴⁰ three USB charge ports, ⁴⁰ advanced voice recognition, ⁵² hands-free phone capability and music streaming ³⁹ via Bluetooth ^{®39} wireless technology, SiriusXM ^{®28} with 3-month Platinum Plan trial subscription ²⁹ Connected Services ¹⁷ — Safety Connect [®] with 1-year trial, ¹⁸ Wi-Fi Connect with up to 2 GB within 3-month trial. ²² See toyota.com/audio-multimedia for details.					O			
Premium Audio — 8-in. touchscreen, eight speakers, AM/FM radio, HD Radio, ^{TM44} Android Auto ^{TM27} & Apple CarPlay ^{®24} & Amazon Alexa ³⁰ compatible, USB media port, ⁴⁰ three USB charge ports, ⁴⁰ Dynamic Navigation ⁴³ with up to 3-year trial, ⁵³ includes Dynamic POI Search and Dynamic Voice Recognition; ⁵⁴ advanced voice recognition; ⁵² hands-free phone capability and music streaming ³⁹ via Bluetooth ^{®39} wireless technology, SiriusXM ^{®28} with 3-month Platinum Plan trial subscription ²⁹ Connected Services ¹⁷ — Safety Connect [®] with 1-year trial, ¹⁸ Wi-Fi Connect with up to 2 GB within 3-month trial; ²² Destination Assist with 1 year trial. ²³ See toyota.com/audio-multimedia for details.	O	O	O		O			
Fabric-trimmed 50/50 split fold-flat third-row seat and sliding second row with passenger-side one-touch access to third-row seat	O							
SofTex®-trimmed ¹¹ 50/50 split fold-flat third-row seat and sliding second row with passenger-side one-touch access to third-row seat				O				
Leather-trimmed 50/50 split fold-flat third-row seat and sliding second row with passenger-side one-touch walk-in function							O	
Power tilt/slide moonroof with sunshade				O		O		
Automatic running boards			O				O	
Running boards	O	O	O	O	O	O		O

4RUNNER SPECIFICATIONS

S = Standard O = Optional A = Available

Mechanical/Performance	SR5	Trail Special Edition	TRD Sport	SR5 Premium	TRD Off-Road	TRD Off-Road Premium	Limited	TRD Pro
ENGINE								
4.0-Liter DOHC 24-Valve V6 with Dual Independent Variable Valve Timing with Intelligence (VVT-i); 270 hp @ 5600 rpm; 278 lb.-ft. @ 4400 rpm	S	S	S	S	S	S	S	S
IGNITION SYSTEM								
Electronic, with Toyota Direct Ignition (TDI)	S	S	S	S	S	S	S	S
TRANSMISSION								
5-speed Electronically Controlled automatic Transmission with intelligence (ECT-i) and sequential shift mode	S	S	S	S	S	S	S	S
DRIVETRAIN								
Part-time 4WD system	A	A	A	A	S	S		S
Full-time 4WD							A	
Locking rear differential					S	S		S
Torsen® ⁴⁸ limited-slip center differential with locking feature							A	
Downhill Assist Control (DAC) ³⁶	A	A	A	A			A	
Active Traction Control (A-TRAC)	A	A			S	S		S
OFF-ROAD								
Approach/departure angle (degrees)	30/26	30/26	30/26	30/26	33/26	33/26	30/26	33/26
Ground clearance (in.)	9	9	9	9	9.6	9.6	9	9.6
Multi-Terrain Select (MTS)					S	S		S
Crawl Control (CRAWL) ⁵					S	S		S
Hill Start Assist Control (HAC) ³	S	S	S	S	S	S	S	S
BODY CONSTRUCTION								
Reinforced body-on-frame construction	S	S	S	S	S	S	S	S
SUSPENSION								
Coil-spring independent double-wishbone front suspension with stabilizer bar; coil-spring 4-link with lateral rod rear suspension with stabilizer bar	S	S	S	S	S	S	S	S
Kinetic Dynamic Suspension System (KDSS)					O	O		
X-REAS Sport Enhancement Suspension			S				S	
TRD FOX® ¹⁰ high-performance shocks with rear remote reservoirs								S
TRD-tuned front springs								S
STEERING								
Engine speed-sensing Variable Flow Control (VFC) power-assisted rack-and-pinion steering	S	S	S	S	S	S	S	S
Turning circle diameter, curb to curb (ft.)	37.4	37.4	37.4	37.4	37.4	37.4	37.4	37.4
BRAKES								
Power-assisted 4-wheel ventilated disc brakes (Multi-Terrain ABS on 4Runner TRD Off-Road and TRD Pro)	S	S	S	S	S	S	S	S

Dimensions	SR5	Trail Special Edition	TRD Sport	SR5 Premium	TRD Off-Road	TRD Off-Road Premium	Limited	TRD Pro
EXTERIOR (in.)								
Overall height (does not include roof rails or roof rack)	71.5	71.5	71.5	71.5	71.5	71.5	71.5	72
Overall width	75.8	75.8	75.8	75.8	75.8	75.8	75.8	75.8
Overall length	190.2	190.2	190.2	190.2	191.3	191.3	190.7	191.3
Wheelbase	109.8	109.8	109.8	109.8	109.8	109.8	109.8	109.8
Track (front/rear)	63.2/63.2	63.2/63.2	63.2/63.2	63.2/63.2	63.2/63.2	63.2/63.2	63.2/63.2	63.2/63.2
INTERIOR front/second-row/third-row seats (in.)								
Head room	39.3/38.6/34.3	39.3/38.6/34.3	39.3/38.6/34.3	39.3/38.6/34.3	39.3/38.6/34.3	39.3/38.6/34.3		
Head room with moonroof				38.6/38.6/34.3		38.6/38.6/—	38.6/38.6/34.3	38.6/38.6/—
Shoulder room	57.8/57.8/57.7	57.8/57.8/—	57.8/57.8/—	57.8/57.8/57.7	57.8/57.8/—	57.8/57.8/—	57.8/57.8/57.7	57.8/57.8/—
Hip room	56.5/55.7/43.3	56.5/55.7/—	55.6/55.7/—	56.5/55.7/43.3	56.5/55.7/—	56.5/55.7/—	56.5/55.7/43.3	56.5/55.7/—
Leg room	41.7/32.9/29.3	41.7/32.9/—	41.7/32.9/—	41.7/32.9/29.3	41.7/32.9/—	41.7/32.9/—	41.7/32.9/29.3	41.7/32.9/—
INTERIOR CARGO VOLUME (cu.ft.) ¹								
Cargo volume (cu. ft.) behind front/second-row seats	89.7/47.2	89.7/47.2	89.7/47.2	89.7/47.2	89.7/47.2	89.7/47.2	89.7/47.2	89.7/47.2
Cargo volume (cu. ft.) behind front/second-row seats with sliding deck	88.8/46.3	88.8/46.3	88.8/46.3	88.8/46.3	88.8/46.3	88.8/46.3	88.8/46.3	88.8/46.3
Cargo volume (cu. ft.) behind front/second/third-row seats	88.8/46.3/9.0		88.8/46.3/—	88.8/46.3/9.0			88.8/46.3/9.0	
Weights and Capacities								
Curb weight (lb.)	4400	4400	4400	4400	4750	4750	4525	4750
Gross Vehicle Weight Rating (GVWR) (lb.)	6100	6100	6100	6100	6300	6300	6100	6300
Fuel tank (gal.)	23	23	23	23	23	23	23	23
Seating capacity (standard/with optional third-row seat)	5/7	5	5	5/7	5	5	5/7	5
TIRES								
Mud-and-Snow tires	S	S	S	S	S	S	S	
All-terrain tires								S
Full-size spare tire, mounted under body	S	S	S	S	S	S	S	S
Mileage Estimates (mpg city/highway/combined) ³⁷								
	16/19/17	16/19/17	16/19/17	16/19/17	16/19/17	16/19/17	16/19/17	16/19/17

DISCLOSURES

1. Cargo and load capacity limited by weight and distribution. Always properly secure cargo and cargo area. 2. The Multi-Terrain Monitor view is limited and can be affected by environmental conditions. See *Owner's Manual* for additional limitations and details. 3. Hill Start Assist Control is designed to help minimize backward rolling on steep ascents. It is not a substitute for safe driving judgment and practices. Factors including speed, grade, surface conditions and driver input can all affect whether HAC will be effective in preventing a loss of control. See *Owner's Manual* for additional limitations and details. 4. The Toyota model or models shown are designed to meet most off-road driving requirements, but off-roading is inherently dangerous and may result in vehicle damage. Toyota encourages responsible operation to help protect you, your vehicle and the environment. Seatbelts should be worn at all times. Do not allow passengers to ride in cargo area. 5. Crawl Control is designed for driving on difficult terrain at low speeds and assists the driver by controlling acceleration and braking, allowing the driver to focus on steering. See *Owner's Manual* for additional limitations and details. 6. Do not overload your vehicle. See *Owner's Manual* for weight limits and restrictions. 7. Before towing, confirm your vehicle and trailer are compatible, hooked up and loaded properly and that you have any necessary additional equipment. Do not exceed any Weight Ratings and follow all instructions in your *Owner's Manual*. The maximum you can tow depends on base curb weight plus the total weight of any cargo, occupants, and added vehicle equipment. "Added vehicle equipment" includes additional standard/optional equipment and accessories added by the manufacturer, dealers, and/or vehicle owners. The only way to be certain of your vehicle's exact curb weight is to weigh your vehicle without passengers or cargo. [Calculated with the new SAE J2807 method.] Installation of a tow hitch receiver or other accessories located near the rear bumper or side-door kick sensors may require disabling or removing the kick sensor, and the sensor operation setting in your vehicle should be turned off. See *Owner's Manual* for limitations. 8. Nitto is a registered trademark of Nitto Tire U.S.A. Inc. 9. Terra Grappler is a registered trademark of Toyo Tire & Rubber Co., Ltd. 10. FOX is a registered trademark of FOX Factory, Inc. 11. SoTex® is a registered trademark of Toyota Motor Sales, U.S.A., Inc. 12. JBL® is a registered trademark of Harman International Industries, Inc. 13. Airbag systems are Supplemental Restraint Systems and are designed to inflate only under certain conditions and in certain types of severe collisions. To decrease the risk of injury from an inflating airbag, always wear seatbelts and sit upright in the middle of the seat as far back as possible. Do not put objects in front of an airbag or around the seatback. Do not use a rearward-facing child seat in any front passenger seat. See *Owner's Manual* for additional limitations and details. 14. The backup camera does not provide a comprehensive view of the rear area of the vehicle and you should also look around the vehicle, using mirrors to confirm rearward clearance. Environmental conditions may limit effectiveness and view may become obscured. See *Owner's Manual* for additional limitations and details. 15. Front and rear parking assist sonar is designed to warn drivers of potential front and rear collisions at speeds of 6 mph or less. Certain vehicle and environmental factors, including an object's shape and composition, may affect the ability of the front and rear parking assist sonar to detect it. Always look around outside the vehicle and use mirrors to confirm clearance. See *Owner's Manual* for additional limitations and details. 16. The Tire Pressure Monitor System alerts the driver when tire pressure is critically low. For optimal tire wear and performance, tire pressure should be checked regularly with a gauge; do not rely solely on the monitor system. See *Owner's Manual* for additional limitations and details. 17. Connected Services depends on factors outside of Toyota's control, including an operative telematics device, a cellular connection, GPS signal, and the availability of a compatible wireless network, without which system functionality and availability may be limited or precluded, including access to response center and emergency support. Service may vary by vehicle and region. Subscription required after trial. Terms of Use apply. Data charges may apply. Apps and services subject to change at any time without notice. See [toyota.com/connected-services](https://www.toyota.com/connected-services) for details. To learn about Toyota's Connected Services data collection, use, sharing and retention practices, please visit <https://www.toyota.com/privacyvts>. Stolen vehicle police report required to use Stolen Vehicle Locator. Connected Services by Toyota trials are at no extra cost. All trials begin on the original date of purchase or lease of a new vehicle, with the exception of Wi-Fi for which the trial begins at the time of activation. Paid subscription required after trial in order to continue accessing the respective services. Terms of Use apply. 18. Safety Connect® depends on factors outside of Toyota's control, including an operative telematics device, a cellular connection, GPS signal, and the availability of a compatible wireless network, without which system functionality and availability may be limited or precluded, including access to response center and emergency support. Stolen vehicle police report required to use Stolen Vehicle Locator. Some features may require the Toyota app. Registration required. Subscription required after trial. Service subject to change at any time without notice. Terms of Use apply. Data charges may apply. Service may vary by vehicle and region. See usage precautions and service limitations in *Owner's Manual* and at [toyota.com/connected-services](https://www.toyota.com/connected-services) for additional details. To learn about Toyota's Connected Services data collection, use, sharing and retention practices, please visit <https://www.toyota.com/privacyvts/>. The Safety Connect® trial period is at no extra cost and begins on the original date of purchase or lease of a new vehicle. Paid subscription required after trial to access the service. 19. Requires adequate cellular coverage and GPS signal strength. May not work in all areas. Service may vary by vehicle and region. See Toyota Dealer for details and exclusions. 20. Information provided is based on the last time data was collected from the vehicle and is not real time data. Service Connect depends on factors outside of Toyota's control, including an operative telematics device, a cellular connection, GPS signal, and the availability of a compatible wireless network, without which system functionality and availability may be limited or precluded. Service may vary by vehicle and region. Registration required. Subscription required after trial. Service subject to change at any time without notice. Terms of Use apply. Data charges may apply. See usage precautions and service limitations in *Owner's Manual* and at [toyota.com/connected-services](https://www.toyota.com/connected-services) for additional details. To learn about Toyota's Connected Services data collection, use, sharing and retention practices, please visit <https://www.toyota.com/privacyvts/>. The Service Connect trial period is at no extra cost and begins on the original date of purchase or lease of a new vehicle. Subscription required after trial. Service Connect renewal will be included when Safety Connect®, Remote Connect or Destination Assist connected service renewal is selected. Service Connect is not renewable as a stand-alone service. 21. Use only if aware of circumstances surrounding vehicle and it is legal and safe to do so (e.g., do not remotely start engine if vehicle is in an enclosed space or vehicle is occupied by a child). Toyota Remote Connect depends on factors outside of Toyota's control, including an operative telematics device, a cellular connection, GPS signal, and the availability of a compatible wireless network, without which system functionality and availability may be limited or precluded. Service may vary by vehicle and region. Registration and Toyota app download required. Subscription required after trial. Terms of Use apply. Data charges may apply. Remote start/stop not available on manual transmission-equipped vehicles. Services subject to change at any time without notice. See usage precautions and service limitations in Toyota *Owner's Manual* and at <https://www.toyota.com/connected-services> for additional details. To learn about Toyota's Connected Services data collection, use, sharing and retention practices, please visit <https://www.toyota.com/privacyvts/>. The Toyota Remote Connect trial period is at no extra cost and begins on the original date of purchase or lease of a new vehicle. Paid subscription required after trial to access the service. Terms of Use apply. 22. Eligible vehicle and wireless service required. Wi-Fi Connect depends on factors outside of Toyota's control, including an operative telematics device, a cellular connection, GPS signal, and the availability of a compatible wireless network, without which system functionality and availability may be limited or precluded. Wi-Fi Connect coverage and service not available everywhere. Valid in the contiguous U.S. and Alaska. Do not drive distracted. Go to att.com/toyota for terms and conditions. Data usage and charges apply. Up to 5 devices can be supported using in-vehicle connectivity. Apps and services subject to change at any time without notice. The Wi-Fi Connect trial begins at the time of activation and expires when 2GB of data is used or when the 3-month period ends. Subscription required after trial. Terms and conditions apply. 23. Destination Assist depends on factors outside of Toyota's control, including an operative telematics device, a cellular connection, GPS signal, and the availability of a compatible wireless network, without which system functionality and availability may be limited or precluded. Use common sense when relying on this information. Service may vary by vehicle and region. Registration required. Subscription required after trial. Services subject to change at any time without notice. Terms of Use apply. Data charges may apply. See *Owner's Manual* and [toyota.com/connected-services](https://www.toyota.com/connected-services) for additional limitations and details. To learn about Toyota's Connected Services data collection, use, sharing and retention practices, please visit <https://www.toyota.com/privacyvts/>. The Destination Assist trial period is at no extra cost and begins on the original date of purchase or lease of a new vehicle. Paid subscription required after trial to access the service. 24. Apps and services are subject to change at any time without notice. Data charges may apply. Apple CarPlay® functionality requires a compatible iPhone® connected with an approved data cable into the USB media port. Apple CarPlay® is a registered trademark of Apple Inc. 25. iPhone® is a registered trademark of Apple Inc. All rights reserved. 26. Android is a trademark of Google LLC. 27. Vehicle user interface is a product of Google and its terms and privacy statement apply. To use Android Auto on your audio display, you'll need an Android Auto compatible vehicle and Android phone. For phone compatibility visit: <https://www.android.com/auto/>. Requires compatible smartphone connected with an approved data cable into the USB media port, and data plan rates apply. Apps and services vary by phone carrier and are subject to change at any time without notice. Android, Android Auto and Waze are trademarks of Google. 28. Trial length and service availability may vary by model, model year or trim. Service will automatically stop at the end of your trial subscription period unless you decide to continue service. If you do not wish to enjoy your trial, you can cancel by calling the number below. All SiriusXM services require a subscription, each sold separately by SiriusXM after the trial period. **Service subject to the SiriusXM Customer Agreement and Privacy Policy; visit www.siriusxm.com to see complete terms and how to cancel which includes calling 1-866-635-2349.** Some services and features are subject to device capabilities and location availability. All fees, content and features are subject to change. SiriusXM, Pandora and all related logos are trademarks of Sirius XM Radio Inc. and its respective subsidiaries. 29. SiriusXM trial length and service availability may vary by model, model year or trim. 30. Amazon, Alexa and all related marks are trademarks of Amazon.com, Inc. or its affiliates. Certain functions require adequate signal strength and/or smartphone technology/connectivity. Not all Amazon Alexa functionality is available for in-vehicle use. See applicable app for details. Download of the Toyota+Alexa app is required to begin in-vehicle use of Alexa. Data charges may apply for certain functions. Apps, prices and services subject to change at any time without notice. To learn more, go to <https://www.toyota.com/audio-multimedia>. To learn more about Toyota's data collection, use, sharing and retention practices, please visit <https://www.toyota.com/privacyvts/>. 31. Toyota Safety Sense™ effectiveness is dependent on many factors including road, weather and vehicle conditions. Drivers are responsible for their own safe driving. Always pay attention to your surroundings and drive safely. See *Owner's Manual* for additional limitations and details. 32. The Pre-Collision System (PCS) with Pedestrian Detection (PD) is designed to determine if impact is imminent and help reduce impact speed and damage in certain frontal collisions involving a vehicle or a pedestrian. PCS w/PD is not a substitute for safe and attentive driving. System effectiveness depends on many factors, such as speed, size and position of pedestrian and weather, light and road conditions. See *Owner's Manual* for additional limitations and details. 33. Dynamic Radar Cruise Control (DRCC) is designed to assist the driver and is not a substitute for safe and attentive driving practices. System effectiveness is dependent on many factors including road, weather and traffic conditions. Vehicles with manual transmission have regular DRCC. See *Owner's Manual* for additional limitations and details. 34. Lane Departure Alert is designed to read visible lane markers under certain conditions, and provide visual and audible alerts when lane departure is detected. It is not a collision-avoidance system or a substitute for safe and attentive driving. Effectiveness is dependent on many factors including road, weather and vehicle conditions. See *Owner's Manual* for additional limitations and details. 35. Automatic High Beams operate at speeds above 25 mph. Factors such as a dirty windshield, weather, lighting and terrain limit effectiveness, requiring the driver to manually operate the high beams. See *Owner's Manual* for additional limitations and details. 36. Downhill Assist Control is designed to help driver maintain vehicle control and speed on steep, downhill descents and is not a substitute for safe driving judgment and practices. Factors including speed, grade, surface conditions and driver input can affect the DAC's ability to prevent loss of control. See *Owner's Manual* for additional limitations and details. 37. EPA-estimated 16 city/19 hwy/17 combined mpg for 2022 4Runner. Use for comparison purposes only. Your mileage will vary for many reasons, including your vehicle's condition and how/where you drive. See www.fueleconomy.gov. 38. The Smart Key System may interfere with some pacemakers or cardiac defibrillators. If you have one of these medical devices, please talk to your doctor to

DISCLOSURES

see if you should deactivate this system. **39.** The *Bluetooth*® word mark and logos are registered trademarks owned by Bluetooth SIG, Inc., and any use of such marks by Toyota is under license. A compatible *Bluetooth*®-enabled phone must first be paired. Phone performance depends on software, coverage and carrier. **40.** May not be compatible with all mobile phones, MP3/WMA players and like models. **41.** Rated for 12 volts/10 amps. See *Owner's Manual* for additional limitations and details. **42.** Do not exceed 120V. See *Owner's Manual* for additional limitations and details. **43.** Dynamic Navigation depends on factors outside of Toyota's control, including an operative telematics device, a cellular connection, GPS signal, and the availability of a compatible wireless network, without which system functionality and availability may be limited or precluded. Services not available in every city or roadway. Use common sense when relying on information provided. Service may vary by vehicle and region. Registration is required. Subscription required after trial. Terms of Use apply. Data charges may apply. See *Owner's Manual* and <https://www.toyota.com/connected-services> for additional limitations and details. To learn about Toyota's Connected Services data collection, use, sharing and retention practices, please visit <https://www.toyota.com/privacyvts/>. **44.** HD Radio™ Technology manufactured under license from iBiquity Digital Corporation U.S. and Foreign Patents. HD Radio™ and the HD, HD Radio, and "Arc" logos are proprietary trademarks of iBiquity Digital Corp. **45.** Do not rely exclusively on the Blind Spot Monitor. Always look over your shoulder and use your turn signal. There are limitations to the function, detection and range of the monitor. See *Owner's Manual* for additional limitations and details. **46.** Do not rely exclusively on the Rear Cross-Traffic Alert system. Always look over your shoulder and use your mirrors to confirm rear clearance. There are limitations to the function, detection and range of the system. See *Owner's Manual* for additional limitations and details. **47.** This floor mat/floor liner was designed specifically for use in your model and model year vehicle and SHOULD NOT be used in any other vehicle. To avoid potential interference with pedal operation, each mat/liner must be secured with its fasteners. Do not install a floor mat/floor liner on top of an existing floor mat/floor liner. **48.** Torsen® is a registered trademark of Zexel Torsen, Inc. **49.** Extra-cost color. **50.** Toyota strives to build vehicles to match customer interest and thus they typically are built with popular options and option packages. Not all options/packages are available separately and some may not be available in all regions of the country. See toyota.com for information about options/packages commonly available in your area. If you would prefer a vehicle without any or with different options, contact your dealer to check for current availability or the possibility of placing a special order. Color(s) depicted may vary based on multiple factors, including ambient lighting and the format in which it is being viewed (e.g., computer, mobile device or print). **51.** HomeLink® and the HomeLink® house icon are registered trademarks of Gentex Corporation. **52.** Advanced voice recognition capabilities vary by head unit. **53.** The Dynamic Navigation trial period is at no extra cost and begins on the original date of purchase or lease of a new vehicle. Paid subscription required after trial to access the service. **54.** Dynamic voice recognition capabilities vary by head unit. **55.** Vehicle Stability Control is an electronic system designed to help the driver maintain vehicle control under adverse conditions. It is not a substitute for safe and attentive driving practices. Factors including speed, road conditions, weather and driver steering input can all affect whether VSC will be effective in preventing a loss of control. See *Owner's Manual* for additional limitations and details. **56.** Brake Assist is designed to help the driver take advantage of ABS and is not a substitute for safe driving practices. Braking effectiveness also depends on proper vehicle maintenance, tire and road conditions. See *Owner's Manual* for additional limitations and details. **57.** Smart Stop Technology® operates only in the event of certain contemporaneous brake and accelerator pedal applications. When engaged, the system will reduce power to help the brakes bring the vehicle to a stop. Factors including speed, road conditions and driver input can all impact stopping distance. Smart Stop Technology® is not a substitute for safe and attentive driving and does not guarantee instant stopping. See *Owner's Manual* for additional limitations and details. **58.** Active front headrests can help reduce the extent of whiplash in certain types of rear-end collisions. **59.** The engine immobilizer is a state-of-the-art anti-theft system that is initiated when you insert your key into the ignition switch or bring a Smart Key fob into the vehicle. The engine will only start if the code in the transponder chip inside the key/fob matches the code in the vehicle's immobilizer. The transponder chip is embedded in the key/fob and can be costly to replace. If you lose a key or fob, your Toyota dealer can help or go to www.aloa.org to find a qualified locksmith in your area who can perform high-security key service.

Toyota strives to build vehicles to match customer interest and thus they typically are built with popular options and option packages. Not all options/packages are available separately and some may not be available in all regions of the country. See toyota.com for information about options/packages commonly available in your area. If you would prefer a vehicle without any or with different options, contact your dealer to check for current availability or the possibility of placing a special order.

Color(s) depicted may vary based on multiple factors, including ambient lighting and the format in which it is being viewed (e.g., computer, mobile device or print).

Some vehicles are shown with available equipment. Seatbelts should be worn at all times. For details on vehicle specifications, standard features and available equipment in your area, contact your Toyota dealer. A vehicle with particular equipment may not be available at the dealership. Ask your Toyota dealer to help locate a specifically equipped vehicle.

All information presented herein is based on data available at the time of posting, is subject to change without notice and pertains specifically to mainland U.S.A. vehicles only. Vehicles shown may be prototypes, shown using visual effects and/or shown with options. Actual models may vary.



Mobility

For Toyota Mobility program details, go to www.toyota.com/mobility or call the Toyota Brand Engagement Center at 1-800-331-4331