

bott

SMARTVAN

Lightweight design



Innovative system

Added functionality

INTRODUCING
the bott Smartvan range

CONTENTS

	Page
Overview	4 - 5
Electric vehicles	6 - 7
Crash tested	8 - 9
Frame	10 - 11
Partition	12 - 13
perfo storage	14 - 15
Case holder	16 - 17
Shelf	18 - 19
Cable shelf	20 - 21
Systainer ³	22 - 23
Organizer	24 - 25
varioSlide	26 - 27
bottBox	28 - 29
Flooring options	30 - 31
Accessories	32 - 33
Build & buy online	34 - 35





Get more out of your van

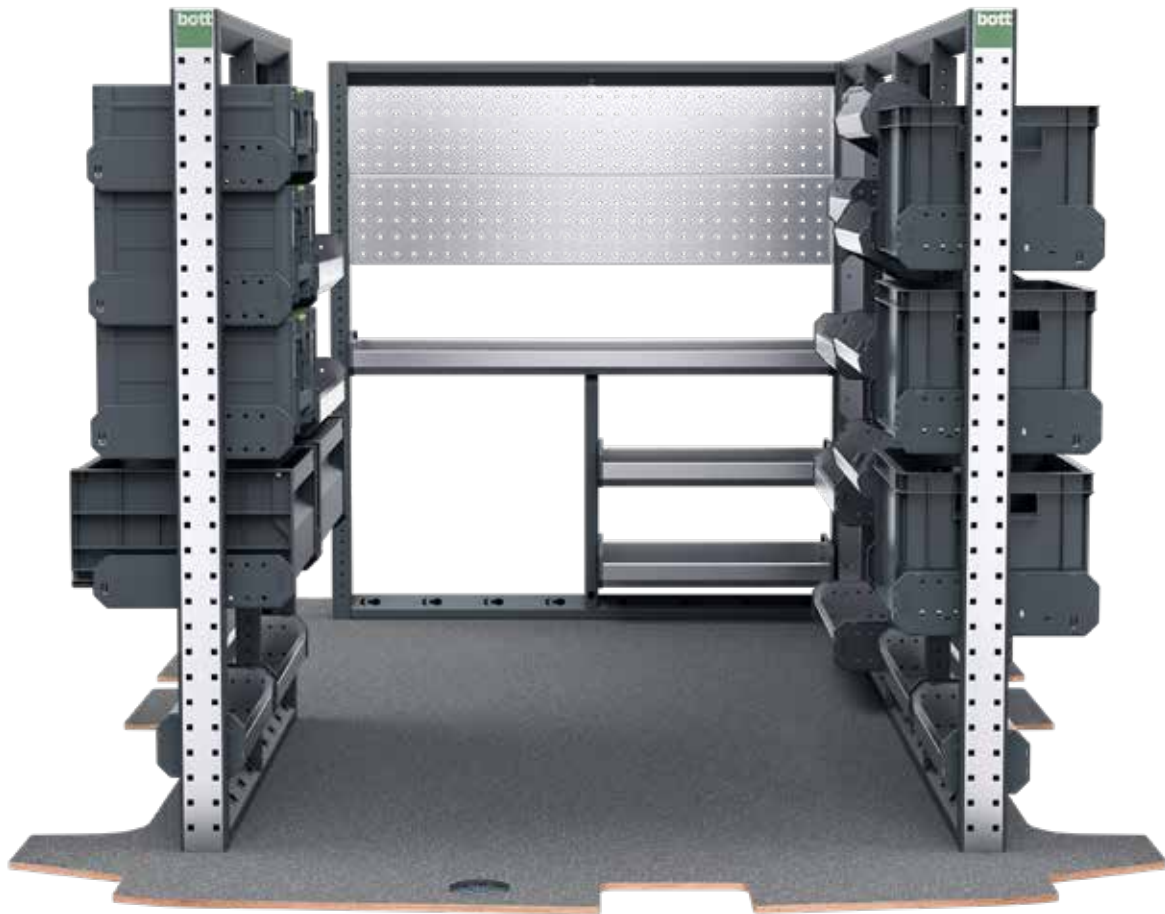
ABOUT

bott Smartvan is part of the Bott Group, a world leader in the manufacture and supply of in-vehicle equipment, with over 90 years of experience.

The bott Smartvan brand is directly available to purchase online. It is a self-fit racking system, which has been designed to fit directly to the fixing points within your vehicle, eliminating the need for drilling.

The system has been crash tested to comply with ECE R17 standards - for your safety but also, for peace of mind.





OVERVIEW

The bott Smartvan system is equipped with clever features; such as underfloor solutions, tie-downs and in-shelf organization kits. These help you to get more out of your van by working smarter, not harder.

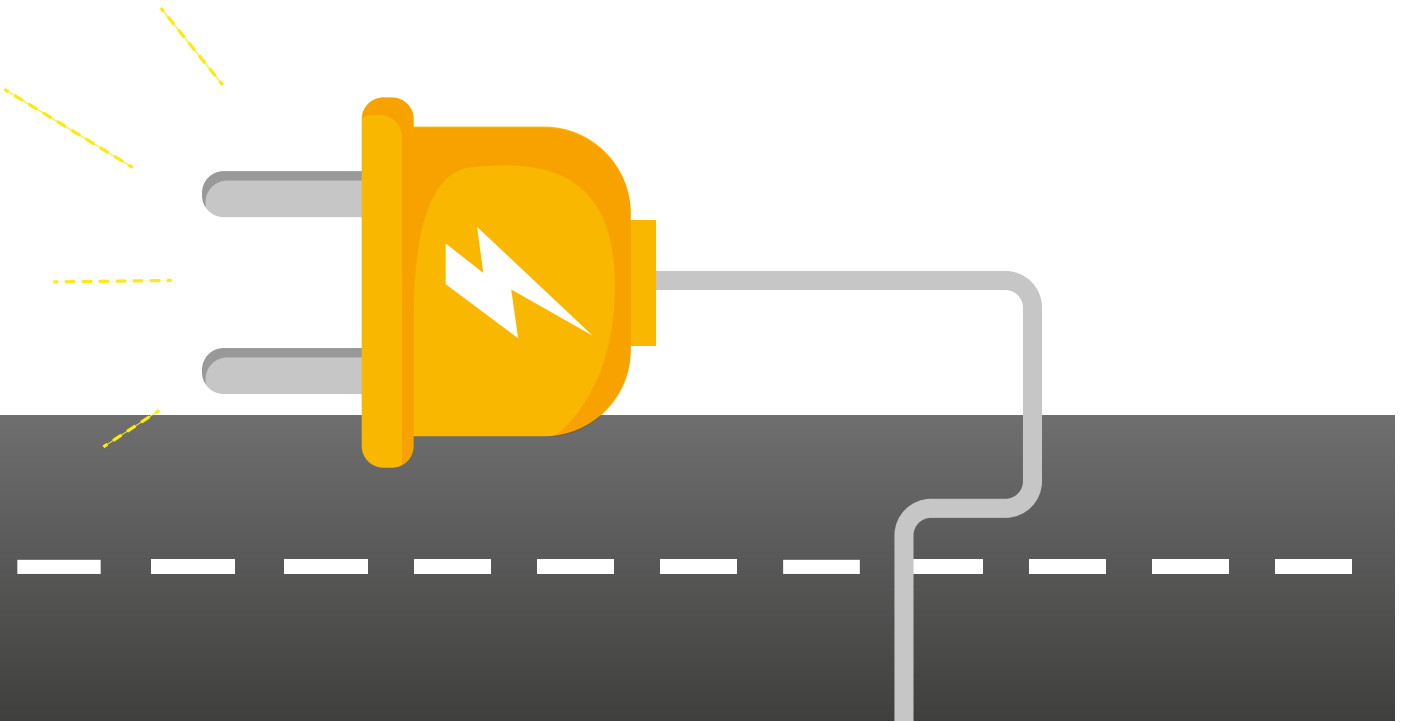
The system is designed to maximize all available space within your van. This is achieved by utilizing wasted areas, whilst retaining the main central load space.

This brochure provides you with an introduction to bott Smartvan and an overview of the product.

For more information you can go online, watch helpful videos and configure your own customized solution at:

www.systainersystems.com





ELECTRIC VEHICLES

- We recognize the growing demand for electric vans. EV's bring significant advantages to any business, providing both financial efficiencies and environmental benefits. The power to run and charge the vehicle is considerably cheaper than the diesel or gas equivalent.
- EV technology has led manufacturers to rethink their approach to vehicle architecture. bott Smartvan racking has been developed in line with the evolution of electric vehicles.

Our no drill racking solution is ideal for fitting around your vehicle's encased floor-mounted battery setup.

- With weight being a key factor in battery efficiency, van racking that is light in weight is essential for electric vehicles.

BEFORE



AFTER





CRASH TESTED

- bott Smartvan racking has been designed with safety at the forefront. Weak, poorly secured racking can be extremely dangerous, even at low speed impacts.
- bott Smartvan racking is fully crash tested to ECE R17 standards. The crash test simulates the collision of the vehicle with an obstacle at a speed of 32mph. Independent experts conduct the tests with a fully-loaded vehicle. The load on the components are equivalent to those experienced during a traffic accident.
- The tests particularly focus on the fixing points to the bodywork, the floor and the sidewalls of the vehicle, as well as the overall construction of the van racking.
- We also pay close attention to all moving parts. The system is designed to keep tool cases and storage boxes firmly in place during transit and optional extras such as anti-slip mats and lashing straps, help prevent loads from sliding around.





FRAME

- Frames are designed to be modular between vehicles of the same size category.
- Designed to fit the profile of the van, optimizing maximum space efficiency with minimal impact on the central load area.
- The fully MIG welded frames with reinforced folds are constructed from 14 gauge steel, providing a solid base for accessories to be attached.
- Epoxy powder coated finish in RAL7016 (Anthracite gray) protects the frames from general wear and tear.
- The integral load restraint feature on the base rail, allows for the secure fixing of loading straps.
- Perforated end panels provide extra storage options, when used with our perfo accessories.

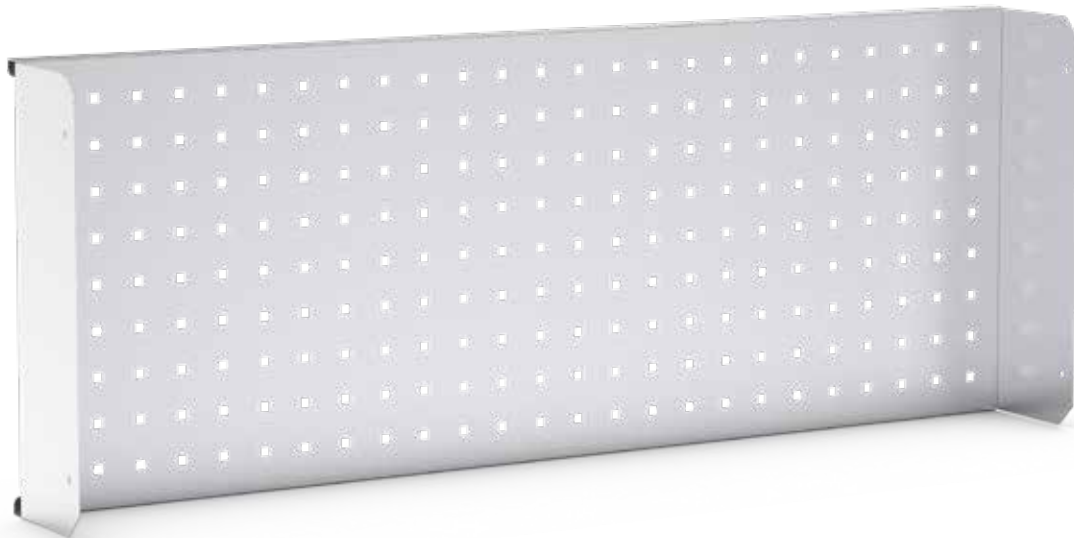




PARTITION

- Partition modules have been designed to fit securely in front of the partition of your van, utilizing what would otherwise be wasted space.
- Similar to the side modules, they can be used to store a wide range of tools, equipment and accessories.
- The partition module can either come as a stand-alone solution, or used in conjunction with side modules. It can also be configured to maintain access to the load through hatch, if your van has this feature.





PERFO STORAGE

- Perforated panels allow for the flexible integration of a wide range of mounted tool holders and accessories, providing visible storage and easy access.
- Our perfo range is iconic in the bott family, being one of the original product ranges. The $\frac{3}{8}$ " perforated squares with a pitch of $1\frac{1}{2}$ ", haven't changed since its origin in 1980.
- Folded from 22 gauge galvanized steel, perfo panels come in a range of sizes and can be purchased individually, or within a configured module.
- A wide range of zinc plated or plastic holders, are used to store a variety of tools and accessories; from screwdrivers, paper rolls and cable reels, to fire extinguishers and first aid kits.
- Accessories are simply fixed to the perfo panel using a small plastic lock, rotated at 45 degrees to secure in place.
- Frame-end perfo inserts and rear door perfo panels, make use of wasted space to provide further storage options.





CASE HOLDER

- Designed to sit at an optimal angle, preventing tool cases from sliding out during transit.
- Safely stores power tool cases, up to 20 $\frac{1}{8}$ " wide.
- Using the plastic stoppers supplied, smaller cases can be slotted in securely to prevent them from moving around.
- The holder can be positioned at a desired height, to allow for varying sized power tool cases.

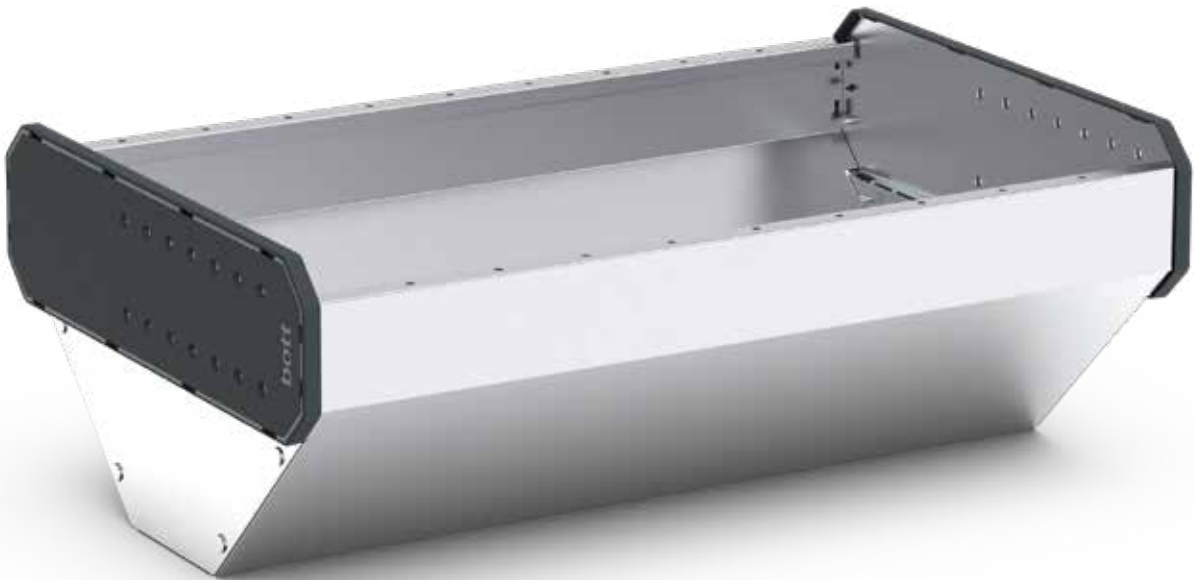




SHELF

- Formed from 22 gauge galvanized sheet steel, with clip on plastic end caps to protect the corners, our shelves are our most diverse accessory in the range.
- Each shelf comes with an anti-slip mat as standard, preventing loose items from sliding around and damaging during transit.
- Our shelves come in a variety of depths, (5 $\frac{3}{8}$ ", 7 $\frac{1}{4}$ ", 10 $\frac{3}{8}$ ", 13 $\frac{1}{4}$ ").
- Optional Aluminum dividers and plastic bin kits are available for every shelf and can be used to secure loose items, small fixings and fittings.
- Options to add bottBox kits for 10 $\frac{3}{8}$ " and 13 $\frac{1}{4}$ " deep shelves.





CABLE SHELF

- A deep, trough style shelf for safely storing cable reels, allowing for quick, easy access on the job.
- This shelf has a maximum load capacity of 55lb, accommodating reels of up to 11 $\frac{7}{8}$ " in diameter.
- Available in 2 widths (20 $\frac{7}{8}$ ", 16 $\frac{1}{2}$ "), each with an internal depth of 11 $\frac{7}{8}$ " and height of 7 $\frac{3}{4}$ ".
- Optional Aluminum dividers are available, to help safely store and separate items.





SYSTAINER³

- The new Systainer³ generation enables you to be more mobile than ever before. Festool & TANOS have teamed up with bott, to develop a mobility system flexible for both on & off-site working.
- bott Smartvan racking has been specifically designed to hold the new Systainer³ generation of cases, with simple integration via dedicated side rails.
- A practical and sturdy case system, the smart choice for the storage & transportation of power tools, hand tools, small parts and consumables.
- The tried and tested T-LOC locking element allows the Systainer³ to be connected to many additional system accessories. The patented system also enables you to open, close and connect it - with just one hand.
- The front and top carry handles allow for easy transportation, in and out of your van.





ORGANIZER

- Transparent lid allows contents to be visible, enabling you to find the right nuts, bolts and screws in no time.
- Multi-functional T-LOC: open, close, connect – with just one twist.
- Optional labeling via 2 card slots on the front of the case, in standard bank card format.
- Can be stacked and connected to many other Systainer products.
- Load capacity: 44lb.





VARIOSLIDE

- bott varioSlide serves as a removable drawer within the racking system, ensuring small parts are always to hand and easy to reach.
- Two widths (inches):
Internal dimensions $13\frac{7}{8}w \times 6\frac{7}{8}h \times 11\frac{3}{8}d$.
Internal dimensions $15\frac{3}{4}w \times 6\frac{3}{8}h \times 11d$.
- Optional aluminum dividers available.





BOTTBOX

- Robust and durable, the award winning bottBox systematically organizes small parts and consumables.
- Innovative properties enable simple cleaning and component retrieval.
- Transparent front panel optimizes bin capacity, whilst retaining visibility of contents.
- Label slots along the front and back help identify the contents, quickly and efficiently.
- Optional dividers available.
- Two depths:
 - 9"d available in 1 width (5½")
 - 11¾"d available in 2 widths (5½", 10¾")





FLOOR OPTIONS

We've designed our bott Smartvan system so that it is compatible with the manufacturer's supplied floor. Alternatively, customers can choose a fully profiled bott Smartvan floor which has been developed to integrate with the system, constructed from ½" hard-wearing water resistant ply, complete with a cross-hatched, non-slip durable gray surface and a vehicle specific fixing kit.

Underfloor

bott Smartvan underfloor deck kits, help you to get more from your van. Systems mount between the side racks and have been load tested to 440lb

(smaller decks) and 661lb UDL (large decks). Features, such as an adjustable divider panel and robust storage tote options, enable efficient space organization. All underfloor systems feature integrated mounts for bott loading straps to secure heavy and loose loads.

- Height of deck: 14¾".
- Usable height beneath deck: 12⅝".
- Depending on van type, full and half deck underfloor systems are available.





ACCESSORIES

- Within the bott Smartvan accessory area, you'll find a wide range of van storage, security and lighting components.
- We also supply trade specific accessories, explore our website and social media channels for lots of inspiration and ideas.
- We're continually adding to our library of accessories, so keep your eyes peeled on the online store for the latest updates.



SAVANA (2016 - PRESENT) CARGO VAN, REGULAR 135" WHEELBASE, STANDARD ROOF, SINGLE SLIDING DOOR

Module	Price	Action
No Module	-	Leave empty
Module US-3301	\$644.78	View this module
Module US-3302	\$704.65	View this module
Module US-3306	\$718.27	View this module
Module US-3303	\$803.69	View this module
Module US-3504	\$832.24	View this module

BUILD & BUY ONLINE

Build and price online

Use our website to access a quick and easy configuration tool to design a customized system for your van and your needs. Try out different layouts of modules, shelves, boxes and flooring solutions at:

www.systemersystems.com

We like our pricing to be transparent, so as you build your solution you can clearly see how much it will cost.



Email: info@systainersystems.com

Tel: 1 (765) 535 7540

www.systainersystems.com

