



Chevy Equinox



# REVIEW YOUR VEHICLE'S CONDITION

---

## **A nick here, a scratch there.**

During a vehicle's life, some wear and tear is expected and considered normal. The next several pages of this guide summarize the most common wear-and-tear items and give you an idea of what we consider normal use. Using the information in this guide, you can review your vehicle's condition. This guide is here to identify any items that may be considered excess wear and tear and result in charges.

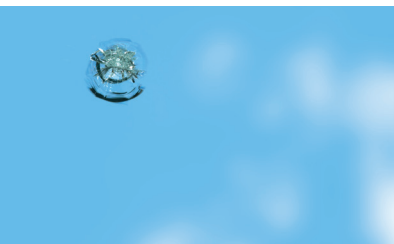
## NORMAL



- Fewer than four dings or dents less than 2.5cm in diameter per panel that have not penetrated or cracked the paint surface.



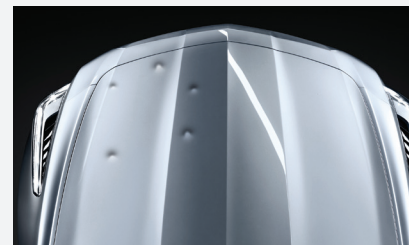
- Panel scratches less than 10cm in length that have not penetrated or cracked the paint surface.



- Chips (including legs) less than 1cm in diameter anywhere on the windshield.
- Maximum of three chips allowed.

## EXCESS

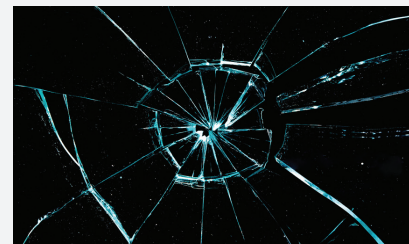
- Panel dents or dings 2.5cm in diameter or greater, or that have penetrated or cracked the paint surface.
- Hail damage or punctures on any panel.



- Panel scratches that have penetrated or cracked the paint surface.



- Chips (including legs) equal to or greater than 1cm in diameter anywhere on the windshield.
- Windshield is cracked and/or broken.



## NORMAL



- Any removable stains.

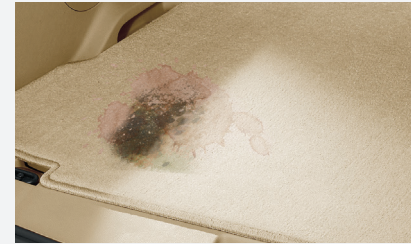


- No upholstery holes on seats or carpet.



- All mechanical items functional.

## EXCESS



- Permanent stains.



- Any interior upholstery holes, cuts or tears.



- Any malfunctioning or nonoperational equipment.

## REVIEW YOUR VEHICLE'S CONDITION

## MISCELLANEOUS

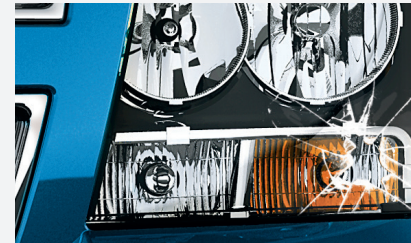
### NORMAL



- No missing equipment or broken parts.
- Any replacement part that meets manufacturer's specifications of equal quality and design.

### EXCESS

- Any missing equipment (including keyless entry remote) or broken parts.
- Any replacement part that does not meet manufacturer's specifications of equal quality and design.



### NORMAL



- Tread depth greater than 3mm at the shallowest point (including spare tire).
- Tires must match manufacturer's recommendation guidelines.
- The two tires on each axle match in type and brand name.
- Original manufacturer wheels.

## WHEELS & TIRES

### EXCESS

- Tread depth equal to or less than 3mm at the shallowest point.
- Tires have gouges, cuts or sidewall plugs. Wheels with scratches.
- Mismatched tire size. The two tires on each axle do not match in type and brand name.
- Studded tires.





CONTACT US

# CALL ON US WHEN YOU NEED A HAND.

For questions, call GM Financial at 1-800-668-9777  
or visit [gmfinancial.ca/en-ca/lease-end.html](https://gmfinancial.ca/en-ca/lease-end.html)

Monday through Friday: 8 a.m. to 5 p.m. ET



© 2021 General Motors Financial Company, Inc. GM Financial and the GM logo are trademarks of General Motors LLC, used with permission.



GMC Sierra