



Nissan Intelligent Mobility moves you one step ahead. In cars that feel like an extension of you, helping you see more and sense more, reacting with you, and sometimes even for you. Nissan Intelligent Mobility is about a better future – moving through life with greater confidence, excitement and connection to the world around you.



ARMADA®

2023

<sup>1</sup>Availability of features vary by vehicle model year, model, trim level, packaging, and options. Please see Owner's Manual for important feature information. <sup>2</sup>Leather appointments. <sup>3</sup>Available feature. <sup>4</sup>Use feature only when safe and legal. Compatible device and service required. Subject to third party service availability. For more information, see [NissanUSA.com/connect/legal](https://www.nissanusa.com/connect/legal). <sup>5</sup>Driving is serious business and requires your full attention. If you have to use the connected device while driving, exercise extreme caution at all times so full attention may be given to vehicle operation. <sup>6</sup>Use Hands Free Text Messaging when parked in a safe location. If you must use while driving, monitor traffic conditions and keep both hands on the steering wheel to prevent collisions. Compatible device required. Message and data rates may apply. <sup>7</sup>Never program while driving. GPS mapping may not be detailed in all areas or reflect current road status. <sup>8</sup>Available feature shown. Compatible device and service required. Cloud-based service provided by Amazon Alexa Automotive services. Subject to third party service availability. Amazon, Alexa and all related logos are trademarks of [Amazon.com](https://www.amazon.com), Inc. or its affiliates. For more information, see [NissanUSA.com/connect/legal](https://www.nissanusa.com/connect/legal). <sup>9</sup>Do not ride in a moving vehicle when the seatback is reclined. For the most effective protection, the seat should be upright. See Owner's Manual for safety information. <sup>10</sup>Tri-Zone operation requires compatible auxiliary media system. See Owner's Manual for details. <sup>11</sup>Horsepower and torque figures based on premium fuel only. <sup>12</sup>Up to 8,500 lbs. maximum towing for 2023 Armada. Towing varies by configuration. See Nissan Towing Guide and Owner's Manual for additional information. Cargo and load capacity limited by weight and distribution. Always secure cargo. <sup>13</sup>Intelligent 4x4 cannot prevent collisions or provide enhanced traction in all conditions. Always monitor traffic and weather conditions. <sup>14</sup>Nissan Safety Shield technologies can't prevent all collisions or warn in all situations. See Owner's Manual for important safety information. <sup>15</sup>Automatic Emergency Braking with Pedestrian Detection cannot prevent all collisions and may not provide warning or braking in all conditions. Driver should monitor traffic conditions and brake as needed to prevent collisions. See Owner's Manual for safety information. <sup>16</sup>Rear Automatic Braking cannot prevent all collisions and may not provide warning or braking in all conditions. Driver should always turn and check surroundings before driving and brake as needed to prevent collisions. See Owner's Manual for safety information. <sup>17</sup>Rear Cross Traffic Alert may not detect all vehicles. See Owner's Manual for safety information. <sup>18</sup>Blind Spot Warning and Intelligent Blind Spot Intervention cannot prevent collisions and may not detect every object or warn in all situations. Driver should always turn and look before changing lanes. See Owner's Manual for safety information. <sup>19</sup>Lane Departure Warning and Intelligent Lane Intervention only operate when lane markings are able to be detected. See Owner's Manual for safety information. <sup>20</sup>Intelligent Cruise Control uses limited braking and is not a collision avoidance or warning system. Driver should monitor traffic conditions and brake as needed to prevent collisions. See Owner's Manual for safety information. <sup>21</sup>Remote Engine Start System to be used only in accordance with laws or rules in effect in your vehicle's location. <sup>22</sup>Extra cost option. <sup>23</sup>Brake Assist cannot prevent all collisions and may not provide warning or braking in all conditions. Driver should monitor traffic conditions and brake as needed to prevent collisions. See Owner's Manual for safety information. <sup>24</sup>Intelligent Driver Alertness cannot provide a warning in every situation. See Owner's Manual for safety information. <sup>25</sup>Intelligent Forward Collision Warning cannot prevent collisions. See Owner's Manual for safety information. <sup>26</sup>Sonar System may not detect every object. Driver should always check surroundings before driving. See Owner's Manual for safety information. <sup>27</sup>Vehicle Dynamic Control cannot prevent collisions due to abrupt steering, carelessness, or dangerous driving techniques. It should remain on when driving, except when freeing the vehicle from mud or snow. See Owner's Manual for safety information. <sup>28</sup>Towing varies by configuration. See Nissan Towing Guide and Owner's Manual for additional information. Always secure cargo. <sup>29</sup>Rear Door Alert System does not detect people or cargo. Always check rear seat before exiting. See Owner's Manual for safety information. <sup>30</sup>Cargo and load capacity limited by weight and distribution. Always secure cargo. Heavy loading of the vehicle with cargo, especially on the roof, will affect the handling and stability of the vehicle. <sup>31</sup>Information displayed is dependent on how vehicle is equipped. Driving is serious business and requires your full attention. If you have to use the feature while driving, exercise extreme caution at all times so full attention may be given to vehicle operation. <sup>32</sup>Intelligent Around View® Monitor cannot eliminate blind spots and may not detect every object. Driver should always turn and check surroundings before driving. See Owner's Manual for safety information. <sup>33</sup>120-volt power outlet is intended only for use with compatible items. Please check specifications of wattage and amperage of items to be plugged in to determine compatibility. <sup>34</sup>Intelligent Back-Up Intervention may not detect every object. Driver should always turn and check surroundings before driving. See Owner's Manual for safety information. <sup>35</sup>Intelligent Rear View Mirror may not detect every object and does not eliminate blind spots or warn of moving objects. See Owner's Manual for safety information. <sup>36</sup>Traffic Sign Recognition may not detect and read all traffic signs in all conditions. Driver should monitor all traffic signs and obey all traffic laws. See Owner's Manual for details. <sup>37</sup>For complete information concerning warranty coverage, conditions, limitations, and exclusions, see your Nissan dealer and [parts.NissanUSA.com](https://www.parts.nissanusa.com) for warranty details. <sup>38</sup>All non-Nissan Genuine Accessories are not warranted by Nissan. Refer to accessory product manufacturer for warranty details. Nissan limited warranty also does not cover damages or failures to the vehicle caused by improper installation or alterations. Damage or failures caused by use of non-Nissan-affiliated parts/accessories are also excluded from Nissan warranty coverage. Read the new vehicle limited warranty information booklet or contact your dealer for details. <sup>39</sup>Genuine Nissan Accessory Roof Rail Crossbars have a maximum weight limit of 100 lbs. <sup>40</sup>Vehicle shown is for illustrative purposes only. Not representative of brochure's model year / model. <sup>41</sup>Dual Camera Drive Recorder to be used only in accordance with any laws or rules in effect in your vehicle's location that may apply to audio or video recordings of drivers and passengers. <sup>42</sup>RearView Monitor may not detect every object and does not eliminate blind spots or warn of moving objects. See Owner's Manual for safety information. <sup>43</sup>Air bags are only a supplemental restraint system. Always wear your seat belt. Rear-facing child restraints should not be placed in the front-passenger's seat. All children 12 and under should ride in the rear seat properly secured in child restraints, booster seats, or seat belts according to their size. Air bags will only inflate in certain accidents. See Owner's Manual for safety information. <sup>44</sup>Fuel economy based on targeted 2023 EPA Fuel Economy Estimates for 2023 Armada.® EPA data not available at time of publication. Targeted 2023 fuel economy 14 City MPG / 19 Highway MPG / 16 Combined for Armada 4x2. Targeted 2023 fuel economy 13 City MPG / 18 Highway MPG / 15 Combined for Armada 4x4. MPG estimate based on Nissan internal testing results, subject to EPA confirmation. Actual mileage may vary with driving conditions. Use for comparison only. <sup>45</sup>Roadside assistance coverage period varies by model-year model. For complete information concerning warranty coverage, conditions and exclusions, see your Nissan dealer and read the warranty information booklet for the model-year model. Apple CarPlay,® Siri,® Siri® Eyes Free, and Apple Music® are registered trademarks of Apple, Inc. AudioPilot™ is a trademark of The Bose Corporation. Bose® is a registered trademark of The Bose Corporation. Facebook® is a registered trademark of Facebook, Inc. Google, Android, Google Play, Android Auto and other marks are trademarks of Google LLC. Google Assistant is not available in certain languages and countries. To use Android Auto on your car display, you'll need an Android phone running Android 6 or higher, an active data plan, and the Android Auto app. HomeLink® is a registered trademark of Gentex Corporation. Instagram® is a registered trademark of Instagram, LLC. iPhone® is a registered trademark of Apple, Inc. All rights reserved. iPhone® or other external device not included. The Sirius®, XM®, and SiriusXM® names and all related marks and logos are trademarks of Sirius XM Radio Inc. All other trademarks are the property of their respective owners. Twitter® is a registered trademark of Twitter, Inc. This brochure is intended for general descriptive and informational purposes only. It is subject to change and does not constitute an offer, representation or warranty (express or implied) by Nissan North America, Inc. Interested parties should confirm the accuracy of any information in this brochure as it relates to a vehicle directly with Nissan North America, Inc., before relying on it to make a purchase decision. Nissan North America, Inc., reserves the right to make changes, at any time, without prior notice, in prices, colors, materials, equipment, specifications, and models and to discontinue models or equipment. Due to continuous product development and other pre- and post-production factors, actual vehicle, materials and specifications may vary from this brochure. Some vehicles shown with optional equipment. See the actual vehicle for complete accuracy. Availability and delivery times for particular models or equipment may vary. Specifications, options and accessories may differ in Hawaii, U.S. territories and other countries. For additional information on availability, options or accessories, see your Nissan dealer or contact Nissan North America, Inc. At [NissanUSA.com](https://www.NissanUSA.com), you'll find virtual product demonstrations, a way to "build your own Nissan," a dealer locator, and more information about key Nissan support services. Or if you'd prefer, call **1-800-NISSAN-3** for answers to specific questions about Armada® or any other Nissan vehicle. The Nissan names, logos, product names, feature names, and slogans are trademarks owned by or licensed to Nissan Motor Co. Ltd. and/or its North American subsidiaries. Other trademarks and trade names are those of their respective owners. **Always wear your seat belt, and please drive responsibly.** ©2022 Nissan North America, Inc. '23 Armada.® 2311069-N-8/22-70K-KSL





# Escape the indoors

Imagine a hard-core, rugged 4x4 SUV that can seat up to eight in first-class luxury and style. This is Armada,<sup>®</sup> and it will change what you expect from a full-size SUV. Tow bigger, explore farther, and do it all with 16 standard driver assistance features that help you feel more confident — whether you're cruising the interstate or navigating a rock-laden trail.<sup>1</sup>



Nissan Armada<sup>®</sup> Platinum shown in Coulis Red Pearl.



## You deserve nothing less than the best

This is where you want to be. Surrounded by quilted leather appointments,<sup>3</sup> wood-tone trim, and brushed metal accents. A large, 12.3" color touch-screen display puts what's important to you within reach.<sup>4</sup>

**Wireless Charger** Keep it 100%. Armada's available wireless charging lets you charge your compatible gadgets without the need for cords.<sup>3, 5</sup>



**Wireless Apple CarPlay® integration** People to see? Places to be? Just ask Siri.® Equipped with Siri® voice control, Apple CarPlay®, shown here, brings your contacts, favorite messaging apps, Apple Music® playlists, Apple Maps, and more on board to your Armada. No need to plug in, just bring your compatible iPhone.®<sup>4, 5, 6, 7</sup>



**Android Auto™** Talk to Google on Android Auto and get things done with your voice. Easily send messages, get directions, control media, and more. Just say, "Hey Google" or, in compatible cars, long-press the voice control button on your steering wheel to get started.<sup>4, 5, 6, 7</sup>



**Alexa Built-in** Discover a new partnership between car and home. Armada comes with Alexa Built-in, allowing you to communicate with your smart home like never before. Simply say: "Alexa, open the garage" or "Alexa, start brewing my coffee."<sup>4, 8</sup>

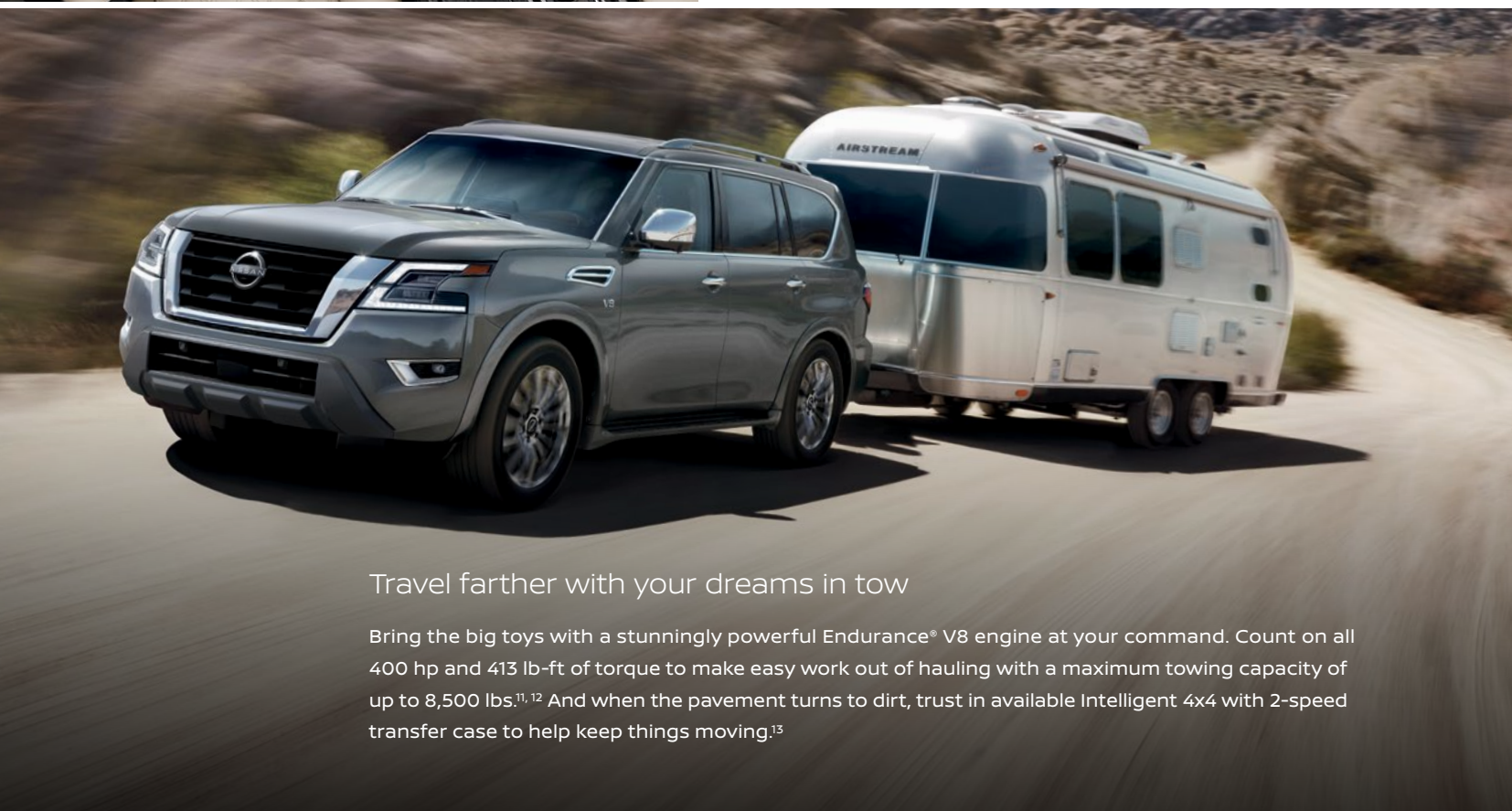




## An elevated experience for all

Let the whole crew enjoy exceptional comfort with seating for eight — or seven with the available second-row captain's chairs. Add in an innovative climate control system that reaches every row, and every passenger can find their ideal zone.

- Heated front and 2nd-row seats<sup>3</sup>
- Seating for up to 8
- Rear air conditioning with rear controls
- Power recline and one-touch folding 3rd-row seats<sup>3, 9</sup>
- Tri-Zone Entertainment System with two wireless headphones<sup>3, 10</sup>



## Travel farther with your dreams in tow

Bring the big toys with a stunningly powerful Endurance® V8 engine at your command. Count on all 400 hp and 413 lb-ft of torque to make easy work out of hauling with a maximum towing capacity of up to 8,500 lbs.<sup>11, 12</sup> And when the pavement turns to dirt, trust in available Intelligent 4x4 with 2-speed transfer case to help keep things moving.<sup>13</sup>



NISSAN  
INTELLIGENT  
MOBILITY™

## Standard Nissan Safety Shield® 360 and driver assist technologies

Armada helps inspire immense confidence with its wide array of advanced safety tech and driver assist features.<sup>1, 14</sup>

### Safety Shield 360 includes:

- Automatic Emergency Braking with Pedestrian Detection<sup>15</sup>
- Rear Automatic Braking<sup>16</sup>
- Rear Cross Traffic Alert<sup>17</sup>
- Blind Spot Warning<sup>18</sup>
- Lane Departure Warning<sup>19</sup>
- High Beam Assist

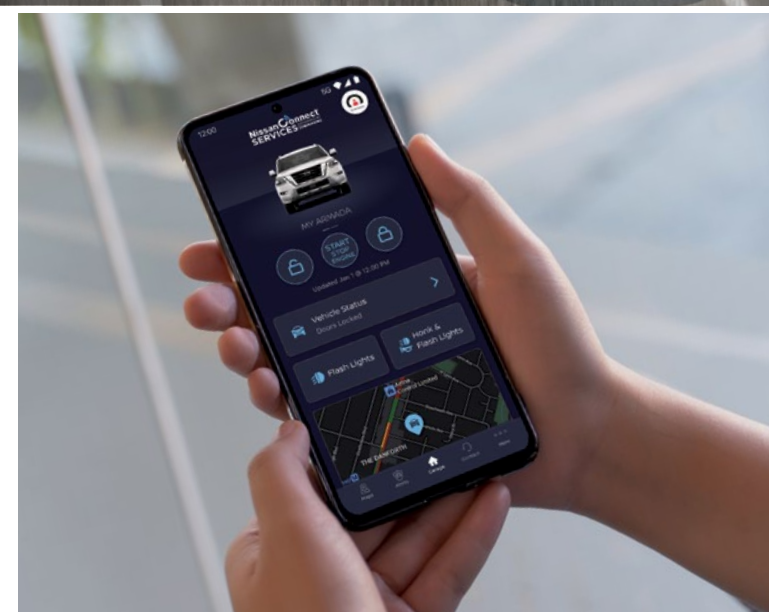
### Armada also comes standard with:

- Intelligent Cruise Control<sup>20</sup>
- Intelligent Blind Spot Intervention<sup>18</sup>
- Intelligent Lane Intervention<sup>19</sup>

**NissanConnect**  
**SERVICES** POWERED BY  
**(SiriusXM)**

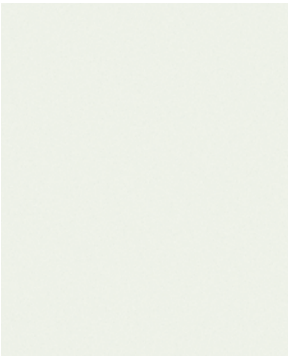
## Remote start from your smartphone

With NissanConnect® Services, you can remotely start your vehicle from nearly anywhere your compatible smartphone works. Need to unlock your vehicle for a friend? Just tap the unlock button on your phone. You can even find your parked vehicle's location. Now that's cool.<sup>4, 21</sup>





CHOOSE YOUR COLOR



Aspen White TriCoat<sup>22</sup>



Brilliant Silver Metallic



Gun Metallic

	S	SV	SL	PLT
Charcoal Cloth				
Almond Leatherette				
Charcoal Leatherette				
Almond Leather <sup>2</sup>				
Charcoal Leather <sup>2</sup>				
Black Leather <sup>2</sup>				
Quilted Almond Leather <sup>2</sup>				
Quilted Black Leather <sup>2</sup>				
Quilted Espresso Brown Leather <sup>2</sup>				

S	SV	SL	PLT

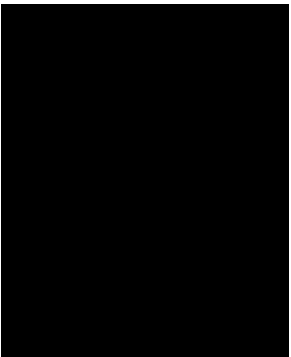
S	SV	SL	PLT



Coulis Red Pearl<sup>22</sup>



Hermosa Blue Pearl



Super Black

	S	SV	SL	PLT
Charcoal Cloth				
Almond Leatherette				
Charcoal Leatherette				
Almond Leather <sup>2</sup>				
Charcoal Leather <sup>2</sup>				
Black Leather <sup>2</sup>				
Quilted Almond Leather <sup>2</sup>				
Quilted Black Leather <sup>2</sup>				
Quilted Espresso Brown Leather <sup>2</sup>				

S	SV	SL	PLT

S	SV	SL	PLT

Standard

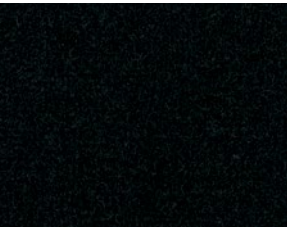
Part of Midnight Edition Package

Nissan has taken care to ensure that the color swatches presented here are the closest possible representations of actual vehicle colors. Swatches may vary slightly due to the printing process and whether viewed in daylight, fluorescent or incandescent light. Please see the actual colors at your local Nissan dealer.

CHOOSE YOUR INTERIOR



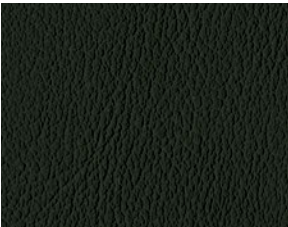
Nissan Armada® Platinum shown in Quilted Almond Leather.<sup>2</sup>



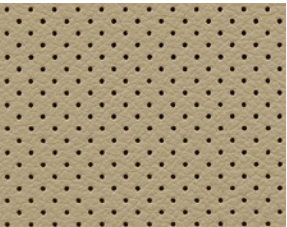
Charcoal Cloth  
S



Almond Leatherette  
SV



Charcoal Leatherette  
SV



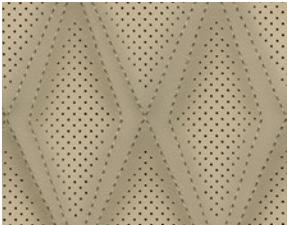
Almond Leather<sup>2</sup>  
SL



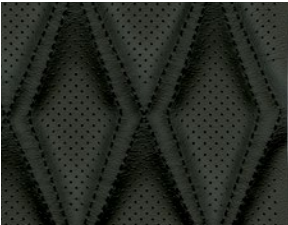
Charcoal Leather<sup>2</sup>  
SL



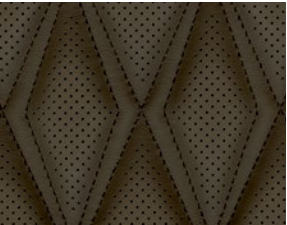
Black Leather<sup>2</sup>  
Midnight Edition Package



Quilted Almond Leather<sup>2</sup>  
Platinum



Quilted Black Leather<sup>2</sup>  
Platinum



Quilted Espresso Brown Leather<sup>2</sup>  
Platinum







CHOOSE YOUR TRIM LEVEL

S

- 400-hp Endurance® 5.6-liter V8 engine<sup>11</sup>
- 7-speed automatic transmission
- Available Intelligent 4x4 with 2-speed transfer case<sup>13</sup>
- 13.8" front and rear vented disc brakes
- Anti-lock Braking System (ABS)
- Electronic Brake force Distribution (EBD) with Brake Assist<sup>23</sup>
- Independent double-wishbone suspension with auto-leveling rear suspension and stabilizer bars
- Intelligent Cruise Control<sup>20</sup>
- Intelligent Driver Alertness<sup>24</sup>
- Intelligent Lane Intervention<sup>19</sup>
- Intelligent Forward Collision Warning<sup>25</sup>
- Automatic Emergency Braking with Pedestrian Detection<sup>15</sup>
- Intelligent Blind Spot Intervention<sup>18</sup>
- Rear Cross Traffic Alert<sup>17</sup>
- Front and Rear Sonar<sup>26</sup>
- Rear Automatic Braking<sup>16</sup>
- High Beam Assist
- Hill start assist
- Vehicle Dynamic Control (VDC)<sup>27</sup> with Traction Control System (TCS)
- Active Brake Limited Slip (ABLS)
- 18" 12-spoke aluminum-alloy wheels
- LED low/high-beam headlights with integrated signature
- Power heated and folding black outside mirrors with LED turn signal indicators
- Class IV tow hitch receiver with 7-pin wiring harness<sup>28</sup>
- Dual Zone Automatic Temperature Control
- Rear air conditioning with rear controls

- In-cabin microfilter
- Nissan Intelligent Key® with Push Button Ignition
- Rear Door Alert<sup>29</sup>
- Variable intermittent windshield wipers
- Intermittent rear window wiper
- Three 12-volt DC power outlets
- Eight cup holders and four bottle holders
- Cargo-area storage under rear floor
- Eight cargo tie-down hooks<sup>30</sup>
- 10-way power driver's seat
- 8-way power passenger's seat
- Second-row 60/40-split fold-down bench seat
- Third-row 60/40-split fold-down bench seat
- Cloth seats
- Leather-wrapped steering wheel and shift knob
- 7" Advanced Drive-Assist™ Display<sup>31</sup>
- NissanConnect® 12.3" color touch-screen display<sup>4</sup>
- Nissan Door to Door Navigation<sup>7</sup>
- Wireless Apple CarPlay® integration<sup>4</sup>
- Android Auto™ compatibility<sup>4</sup>
- NissanConnect® Services powered by SiriusXM with trial access to 5-year Select and Plus, and 6-month Premium packages<sup>4</sup>
- Wi-Fi Hotspot<sup>4</sup>
- SiriusXM Traffic and Travel Link with 3-month subscription included<sup>4</sup>
- Hands-free Text Messaging Assistant<sup>6</sup>
- AM/FM audio system with four speakers
- SiriusXM Radio with 3-month subscription included<sup>4</sup>
- Two USB-A and two USB-C ports<sup>5</sup>





SL

INCLUDES SV EQUIPMENT PLUS:

- Intelligent Around View® Monitor<sup>32</sup>
- 20" 18-spoke aluminum-alloy wheels
- Body-color outside mirrors with puddle lights
- Auto-dimming outside mirrors
- Power sliding glass moonroof
- Power liftgate
- 120-volt AC power outlet<sup>33</sup>
- Footwell lights
- Memory System — driver's seat, steering wheel, and outside mirrors

- Leather-appointed seats
- Leather-appointed door trim with double stitching
- Wood-tone trim
- Heated leather-wrapped steering wheel
- Bose Premium Audio System with 13 speakers, including center speaker and subwoofer
- Bose AudioPilot™ Noise Compensation Technology






PLATINUM

INCLUDES SL EQUIPMENT PLUS:

- Vehicle-speed-sensitive power steering
- Intelligent Back-Up Intervention<sup>34</sup>
- Intelligent Rear View Mirror<sup>35</sup>
- Traffic Sign Recognition<sup>36</sup>
- 22" 14-spoke aluminum-alloy wheels
- Chrome outside mirrors
- Windshield wiper deicer
- Rain-sensing windshield wipers
- Illuminated cup holders

- Climate-controlled front seats (heated and cooled)
- Heated outboard second-row seats
- Power recline and one-touch folding third-row<sup>9</sup>
- Quilted leather-appointed seats
- Birdseye Maple wood-tone trim
- Tri-Zone Entertainment System with dual rear 8" monitors, remote control, two wireless headphones, USB and HDMI input<sup>5, 10</sup>




CHOOSE YOUR PACKAGE

CAPTAIN'S CHAIRS PACKAGE

SL, PLATINUM

- Second-row fold-down captain's chairs with tip-up easy entry for third row

- Second-row padded center console with cup holders



MIDNIGHT EDITION® PACKAGE

SL

Includes Captain's Chairs package plus:

- 20" 12-spoke aluminum-alloy wheels
- Black lower center bumper fascias
- Black grille
- Black rear finisher
- Power heated and folding black outside mirrors with LED turn signal indicators

- Black exterior badging
- Black roof rails<sup>30</sup>
- Black interior trim and headliner
- Midnight Edition Floor Mats
- Carpeted Cargo Area Protector



Images may show additional available equipment.



NISSAN ARMADA® ACCESSORIES

Turn brand-new into all you

Every Genuine Nissan Accessory is custom-fit, custom-designed and durability-tested. Each one is backed by Nissan's 3-year/36,000-mile (whichever occurs first) limited warranty (if installed by dealer at the time of new vehicle purchase) and can be financed when installed by dealer at time of new vehicle purchase.<sup>37</sup> Affiliated Yakima® accessories are not warranted by Nissan. Refer to product manufacturer for warranty details. Nissan Limited Warranty does not cover damages or failures to the vehicle caused by improper installation or alterations of any Nissan approved accessory or component. Contact your dealer/retailer for details.<sup>38</sup>



Nissan Armada® Platinum shown in Aspen White TriCoat with Chrome Body Side Moldings, Chrome Outside Mirror Covers (standard on Platinum), Exterior Ground Lighting, Roof Rail Crossbars,<sup>30, 39</sup> Side-Window Deflectors, Moonroof Wind Deflector, Rear Bumper Step, Hitch Ball Mount, Class III,<sup>28</sup> Hitch Ball, Class III,<sup>28</sup> and Affiliated: Yakima® SkyBox 16 — Roof Cargo Box.<sup>30, 38</sup>

CHOOSE YOUR ACCESSORIES

- A. **Illuminated Kick Plates**  
For a grand entrance every time.
- B. **Tablet Holder**<sup>40</sup>  
Let your passengers enjoy their entertainment hands-free.
- C. **Illuminated Scuff Plate**  
A bright idea that protects your liftgate.
- D. **Interior Accent Lighting**  
Starts every trip with a warm glow.
- E. **All-Season Floor Mats (5-piece set)**  
Neither rain, sleet, nor snow will mess your ride.
- F. **Trash Bin**<sup>40</sup>  
Spruce up your space with this handy, removable trash bin.
- G. **All-Season Cargo Area Protector**  
Preserve and protect your cargo — and your Armada.®
- H. **Dual Camera Drive Recorder**<sup>40, 41</sup>  
Catch what's happening outside and inside your Armada.

- Additional Accessories:
- Frameless Auto-Dimming Rearview Mirror with Universal Remote
  - Carpeted Cargo Area Protector
  - Removable Tote Cargo Organizer
  - Cargo Net
  - Security Impact Sensor
  - Hatch Tent
  - And More

For more information and to shop online for Armada® Genuine Nissan Accessories, go to [bit.ly/23Armada-Accys](https://bit.ly/23Armada-Accys)





SPECIFICATIONS

Engine	S	SV	SL	Platinum
Endurance® 5.6-liter DOHC 32-valve V8 engine	■	■	■	■
400 hp @ 5,800 rpm <sup>11</sup>				
413 lb-ft of torque @ 4,000 rpm <sup>11</sup>				
Variable Valve Event and Lift (VVEL™) technology	■	■	■	■
Direct Injection Gasoline (DIG)	■	■	■	■

Drivetrain				
Intelligent 4x4 with 2-speed transfer case <sup>13</sup>	□	□	□	□
7-speed automatic transmission with manual shift mode and Downshift Rev Matching	■	■	■	■
Final drive ratio (2.937:1)	■	■	■	■

Brakes				
13.8" front and rear vented disc brakes	■	■	■	■
Anti-lock Braking System (ABS)	■	■	■	■
Electronic Brake force Distribution (EBD)	■	■	■	■
Brake Assist <sup>23</sup>	■	■	■	■

Suspension/Steering				
Independent double-wishbone front/rear suspension	■	■	■	■
Auto-leveling rear suspension	■	■	■	■
Front and rear stabilizer bars	■	■	■	■
Engine-speed-sensitive power steering	■	■	■	
Vehicle-speed-sensitive power steering				■

Driver Assistance Technologies				
Intelligent Cruise Control <sup>20</sup>	■	■	■	■
Intelligent Driver Alertness <sup>24</sup>	■	■	■	■
Lane Departure Warning <sup>19</sup>	■	■	■	■
Intelligent Lane Intervention <sup>19</sup>	■	■	■	■
Intelligent Forward Collision Warning <sup>25</sup>	■	■	■	■
Automatic Emergency Braking with Pedestrian Detection <sup>15</sup>	■	■	■	■
Blind Spot Warning <sup>18</sup>	■	■	■	■
Intelligent Blind Spot Intervention <sup>18</sup>	■	■	■	■
Intelligent Rear View Mirror <sup>35</sup>				■
Rear Cross Traffic Alert <sup>17</sup>	■	■	■	■
Intelligent Back-Up Intervention <sup>34</sup>				■
RearView Monitor <sup>42</sup>	■	■		
Intelligent Around View® Monitor <sup>32</sup>			■	■
Front and Rear Sonar System <sup>26</sup>	■	■	■	■
Rear Automatic Braking <sup>16</sup>	■	■	■	■
High Beam Assist	■	■	■	■
Traffic Sign Recognition <sup>36</sup>				■
Hill start assist	■	■	■	■
Vehicle Dynamic Control (VDC) <sup>27</sup> with Traction Control System (TCS)	■	■	■	■
Active Brake Limited Slip (ABLS)	■	■	■	■
Trailer Sway Control <sup>28</sup>		■	■	■
Trailer brake controller		■	■	■

Wheels/Tires	S	SV	SL	Platinum
18" x 8.0" 12-spoke aluminum-alloy wheels	■	■		
20" x 8.0" 18-spoke aluminum-alloy wheels			■	
20" x 8.0" 12-spoke aluminum-alloy wheels			M	
22" x 8.0" 14-spoke aluminum-alloy wheels				■
P265/70R18 all-season tires	■	■		
P275/60R20 all-season tires			■	
P275/50R22 all-season tires				■

Exterior Features				
Black lower center bumper fascias			M	
LED low/high-beam headlights with integrated signature	■	■	■	■
LED fog lights		■	■	■
Dark gray roof rails <sup>30</sup>		■	■	■
Black roof rails <sup>30</sup>			M	
Gun Metallic-painted overfenders	■			
Body-color overfenders		■	■	■
Power heated and folding outside mirrors with LED turn signal indicators	■	■	■	■
Chrome outside mirrors				■
Outside mirrors with puddle lights			■	■
Auto-dimming outside mirrors			■	■
Rear privacy glass		■	■	■
Power sliding glass moonroof with one-touch open/close and tilt feature			■	■
Power liftgate			■	■
Class IV tow hitch receiver with 7-pin wiring harness <sup>28</sup>	■	■	■	■

Comfort/Convenience				
Dual Zone Automatic Temperature Control	■	■	■	■
Rear air conditioning with rear controls	■	■	■	■
In-cabin microfilter	■	■	■	■
Nissan Intelligent Key® with Push Button Ignition	■	■	■	■
Remote Engine Start System <sup>21</sup>		■	■	■
HomeLink® Universal Transceiver		■	■	■
Rear Door Alert <sup>29</sup>	■	■	■	■
Variable intermittent windshield wipers	■	■	■	■
Rain-sensing windshield wipers				■
Intermittent rear window wiper	■	■	■	■
Windshield wiper deicer				■
Auto-dimming rearview mirror		■	■	■
Sun visors with illuminated vanity mirrors and extension	■	■	■	■
Three 12-volt DC power outlets	■	■	■	■
120-volt AC power outlet <sup>33</sup>			■	■
Footwell lights			■	■
Eight cup holders and four bottle holders	■	■	■	■
Illuminated cup holders				■
Cargo-area storage under rear floor	■	■	■	■
Eight cargo tie-down hooks <sup>30</sup>	■	■	■	■
Midnight Edition® Floor Mats			M	
Carpeted Cargo Area Protector			M	

Seating/Appointments	S	SV	SL	Platinum
10-way power driver's seat	■	■	■	■
8-way power front-passenger's seat	■	■	■	■
Memory System – driver's seat, steering wheel, and outside mirrors			■	■
Heated front seats		■	■	
Climate-controlled front seats (heated and cooled)				■
Heated second-row seats				■
Second-row 60/40-split fold-down bench seat	■	■	■	■
Second-row fold-down captain's chairs			M/C	C
Second-row padded center console with cup holders			M/C	C
Third-row 60/40-split fold-down bench seat	■	■	■	■
Power recline and one-touch folding third row <sup>9</sup>				■
Cloth seats	■			
Leather-appointed seats (1st and 2nd row)			■	
Quilted leather-appointed seats (1st and 2nd row)				■
Leatherette seats		■		
Leather-wrapped steering wheel	■	■		
Heated leather-wrapped steering wheel			■	■
Leather-wrapped shift knob	■	■	■	■
Leather-appointed door trim			■	■
Silky-carbon interior trim	■	■	M	
Wood-tone trim			■	
Birdseye Maple wood-tone trim				■

Infotainment				
7" Advanced Drive-Assist™ Display <sup>31</sup>	■	■	■	■
NissanConnect® 12.3" color touch-screen display <sup>4</sup>	■	■	■	■
Nissan Door to Door Navigation <sup>7</sup>	■	■	■	■
Wireless Apple CarPlay® integration <sup>4</sup>	■	■	■	■
Android Auto™ compatibility <sup>4</sup>	■	■	■	■
NissanConnect® Services powered by SiriusXM <sup>4</sup>	■	■	■	■
Wi-Fi Hotspot <sup>4</sup>	■	■	■	■
Alexa Built-in <sup>4, 8</sup>		■	■	■
Wireless charger <sup>5</sup>		■	■	■
Hands-free Text Messaging Assistant <sup>6</sup>	■	■	■	■
AM/FM audio system with 4 speakers	■			
AM/FM audio system with 6 speakers		■		
Bose Premium Audio System with 13 speakers, including Bose AudioPilot™			■	■
Tri-Zone Entertainment System with dual rear 8" monitors, remote control, two wireless headphones, USB and HDMI input <sup>3, 10</sup>				■
Two USB-A and two USB-C ports <sup>5</sup>	■	■	■	■

Safety/Security				
Nissan Advanced Air Bag System with dual-stage supplemental front air bags with seat-belt and occupant-classification sensors <sup>43</sup>	■	■	■	■
Driver and front-passenger seat-mounted side-impact supplemental air bags <sup>43</sup>	■	■	■	■
Roof-mounted curtain side-impact supplemental air bags for outboard occupant head protection for all three rows <sup>43</sup>	■	■	■	■
LATCH System (Lower Anchors and Tethers for Children)	■	■	■	■

DIMENSIONS/CAPACITIES/MPG

Exterior Dimensions – Inches	
Wheelbase	121.1
Overall length/width/height	208.9/79.9/75.8
Track width (front/rear)	67.5/67.9

Vehicle Clearance	
Minimum Ground Clearance (inches) S, SV	9.1
Minimum Ground Clearance (inches) SL, Platinum	9.2
Angle of approach (degrees) S, SV	20.8
Angle of approach (degrees) SL, Platinum	21
Angle of departure (degrees) S, SV	22.2
Angle of departure (degrees) SL, Platinum	22.4
Breakover angle (degrees) S, SV	20.5
Breakover angle (degrees) SL, Platinum	20.7

Interior Dimensions – Inches	
Head room without moonroof (front)	40.9
Head room with moonroof (front)	39.8
Head room (2nd row/3rd row)	40.0/36.4
Leg room (front row/2nd row/3rd row)	41.9/41.0/28.4
Hip room (front row/2nd row/3rd row)	59.2/58.4/48.8
Shoulder room (front row/2nd row/3rd row)	63.8/63.4/60.5

Capacities	
Seating capacity with 2nd-row bench seat	8
Seating capacity with Captain's Chairs Package	7
Fuel tank (gals.)	26
Maximum towing capacity (lbs.) <sup>12</sup>	8,500
Tongue weight capacity (lbs.)	850

EPA Fuel Economy Estimates <sup>44</sup>	
<b>City/Highway/Combined mpg</b>	
4x2	14/19/16
4x4	13/18/15

NISSAN ROADSIDE ASSISTANCE

Your peace of mind is on us. For 36 months or 36,000 miles, whichever comes first, your new Nissan is covered for the following:<sup>45</sup>

- Flat-tire changes
- Trip Interruption benefits
- Jump starts
- Vehicle lockouts
- Emergency fuel delivery

Follow Nissan on:



visit **NissanUSA.com/armada**  
PRINTED IN POLAND