



Nissan Intelligent Mobility moves you one step ahead. In cars that feel like an extension of you, helping you see more and sense more, reacting with you, and sometimes even for you. Nissan Intelligent Mobility is about a better future – moving through life with greater confidence, excitement and connection to the world around you.



FRONTIER®

2023



¹Up to 1,620 lbs. maximum payload for 2023 Frontier King Cab® 4x2; 1,450 lbs. for Frontier King Cab® 4x4; 1,480 lbs. for Frontier Crew Cab 4x2; 1,310 lbs. for Frontier Crew Cab 4x4; 1,300 lbs. for Frontier Crew Cab Long Bed 4x2; and 1,100 for Frontier Crew Cab Long Bed 4x4. Payload varies by configuration. See Nissan Towing Guide and Owner's Manual for additional information. Cargo and load capacity limited by weight and distribution. Always secure cargo. ²Up to 6,690 lbs. maximum towing for 2023 Frontier King Cab® 4x2; 6,530 lbs. for Frontier King Cab® 4x4; 6,560 lbs. for Frontier Crew Cab 4x2; 6,400 lbs. for Frontier Crew Cab 4x4; 6,440 lbs. for Frontier Crew Cab Long Bed 4x2; and 6,240 lbs. for Frontier Crew Cab Long Bed 4x4. Towing varies by configuration. See Nissan Towing Guide and Owner's Manual for additional information. Cargo and load capacity limited by weight and distribution. Always secure cargo. ³Available feature. ⁴Remote Engine Start System to be used only in accordance with laws or rules in effect in your vehicle's location. ⁵Intelligent Around View® Monitor cannot eliminate blind spots and may not detect every object. Driver should always turn and check surroundings before driving. See Owner's Manual for safety information. ⁶Availability of features vary by vehicle model year, model, trim level, packaging, and options. Please see Owner's Manual for important feature information. ⁷Nissan Safety Shield technologies can't prevent all collisions or warn in all situations. See Owner's Manual for important safety information. ⁸Automatic Emergency Braking with Pedestrian Detection cannot prevent all collisions and may not provide warning or braking in all conditions. Driver should monitor traffic conditions and brake as needed to prevent collisions. See Owner's Manual for safety information. ⁹Rear Automatic Braking cannot prevent all collisions and may not provide warning or braking in all conditions. Driver should always turn and check surroundings before driving and brake as needed to prevent collisions. See Owner's Manual for safety information. ¹⁰Rear Cross Traffic Alert may not detect all vehicles. See Owner's Manual for safety information. ¹¹Blind Spot Warning cannot prevent collisions and may not detect every object or warn in all situations. Driver should always turn and look before changing lanes. See Owner's Manual for safety information. ¹²Lane Departure Warning only operates when lane markings are able to be detected. See Owner's Manual for safety information. ¹³Intelligent Cruise Control uses limited braking and is not a collision avoidance or warning system. Driver should monitor traffic conditions and brake as needed to prevent collisions. See Owner's Manual for safety information. ¹⁴120-volt power outlet is intended only for use with compatible items. Please check specifications of wattage and amperage of items to be plugged in to determine compatibility. ¹⁵Cargo shown for display purposes only. Cargo and load capacity limited by weight and distribution. Always secure cargo. Heavy loading of the vehicle with cargo, especially on the roof, will affect the handling and stability of the vehicle. ¹⁶Available feature shown. Use feature only when safe and legal. Compatible device and service required. Subject to third party service availability. For more information, see [NissanUSA.com/connect/legal](https://www.nissanusa.com/connect/legal). ¹⁷Certain Alexa functionality is dependent on smart home technology. Amazon Alexa Skills is a trademark of Amazon.com, Inc. or its affiliates. ¹⁸Comparison based on latest in-market *Ward's* Small Truck segment. Driving is serious business and requires your full attention. If you have to use the feature while driving, exercise extreme caution at all times so full attention may be given to vehicle operation. Based on manufacturer's website. ¹⁹Driving is serious business and requires your full attention. If you have to use the connected device while driving, exercise extreme caution at all times so full attention may be given to vehicle operation. External device not included. ²⁰Extra cost option. ²¹Leather appointments. ²²Intelligent Forward Collision Warning cannot prevent collisions. See Owner's Manual for safety information. ²³RearView Monitor may not detect every object and does not eliminate blind spots or warn of moving objects. See Owner's Manual for safety information. ²⁴Intelligent Driver Alertness cannot provide a warning in every situation. See Owner's Manual for safety information. ²⁵Vehicle Dynamic Control cannot prevent collisions due to abrupt steering, carelessness, or dangerous driving techniques. It should remain on when driving, except when freeing the vehicle from mud or snow. See Owner's Manual for safety information. ²⁶Information displayed is dependent on how vehicle is equipped. Driving is serious business and requires your full attention. If you have to use the feature while driving, exercise extreme caution at all times so full attention may be given to vehicle operation. ²⁷Never program while driving. GPS mapping may not be detailed in all areas or reflect current road status. ²⁸Use Hands Free Text Messaging when parked in a safe location. If you must use while driving, monitor traffic conditions and keep both hands on the steering wheel to prevent collisions. Compatible device required. Message and data rates may apply. ²⁹Second-row under-seat storage not available on Frontier Crew Cab S models. ³⁰Tire Pressure Monitoring System is not a substitute for regular tire pressure checks. See Owner's Manual for safety information. ³¹One tow hook for S trim; two tow hooks for SV, PRO-X®, and PRO-4X® trims. ³²Traffic Sign Recognition may not detect and read all traffic signs in all conditions. Driver should monitor all traffic signs and obey all traffic laws. See Owner's Manual for details. ³³Towing varies by configuration. See Nissan Towing Guide and Owner's Manual for additional information. Always secure cargo. ³⁴For complete information concerning warranty coverage, conditions, limitations, and exclusions, see your Nissan dealer and [parts.NissanUSA.com](https://www.nissanusa.com) for warranty details. ³⁵All non-Nissan Genuine Accessories are not warranted by Nissan. Refer to accessory product manufacturer for warranty details. Nissan limited warranty also does not cover damages or failures to the vehicle caused by improper installation or alterations. Damage or failures caused by use of non-Nissan-affiliated parts/accessories are also excluded from Nissan warranty coverage. Read the new vehicle limited warranty information booklet or contact your dealer for details. ³⁶Compatible smartphone required. Virtual Key to be used only in accordance with laws or rules in effect in your vehicle's location. Actual maximum distance for operation will vary depending on obstructions between compatible device and vehicle. ³⁷Vehicle shown is for illustrative purposes only. Not representative of brochure's model year/model. ³⁸Dual Camera Drive Recorder to be used only in accordance with any laws or rules in effect in your vehicle's location that may apply to audio or video recordings of drivers and passengers. ³⁹King Cab, Crew Cab Long Bed, and Crew Cab 4x2 models only. ⁴⁰Brake Assist cannot prevent all collisions and may not provide warning or braking in all conditions. Driver should monitor traffic conditions and brake as needed to prevent collisions. See Owner's Manual for safety information. ⁴¹Sonar System may not detect every object. Driver should always check surroundings before driving. See Owner's Manual for safety information. ⁴²4x4 only. ⁴³Rear Door Alert System does not detect people or cargo. Always check rear seat before exiting. See Owner's Manual for safety information. ⁴⁴Driving is serious business and requires your full attention. Do not operate any devices connected to the power outlets while driving. ⁴⁵Air bags are only a supplemental restraint system. Always wear your seat belt. Rear-facing child restraints should not be placed in the front-passenger's seat. All children 12 and under should ride in the rear seat properly secured in child restraints, booster seats, or seat belts according to their size. Air bags will only inflate in certain accidents. See Owner's Manual for safety information. ⁴⁶Interior passenger volume with moonroof is 98.9 cu. ft. ⁴⁷2023 EPA Fuel Economy Estimates. 18 City MPG / 24 Highway MPG / 20 Combined MPG for Frontier® 4x2; 17 City MPG / 22 Highway MPG / 19 Combined MPG for Frontier 4x4. Actual mileage may vary with driving conditions. Use for comparison only. ⁴⁸Roadside assistance coverage period varies by model-year model. For complete information concerning warranty coverage, conditions and exclusions, see your Nissan dealer and read the warranty information booklet for the model-year model. ©2023 Amazon.com, Inc. or its affiliates. Amazon, Alexa, Echo, and all related marks are trademarks of Amazon.com, Inc. or its affiliates. Apple CarPlay®, Apple Music®, Apple Watch®, and Siri® are registered trademarks of Apple, Inc. Bilstein® is a registered trademark of ThyssenKrupp Bilstein GmbH. Bluetooth® word mark and logos are owned by Bluetooth SIG, Inc., and any use of such marks by Nissan is under license. Facebook® is a registered trademark of Facebook, Inc. Fender® is a registered trademark of Fender Musical Instruments Corporation. Google, Android, YouTube and Android Auto are trademarks of Google LLC. Google Assistant is not available in certain languages and countries. To use Android Auto on your car display, you'll need an Android phone running Android 8 or higher, an active data plan, and the Android Auto app. HomeLink® is a registered trademark of Genetec Corporation. Instagram® is a registered trademark of Instagram, LLC. KICKER® is a registered trademark of Stillwater Designs. Qi® is a registered trademark of IEEE Industry Standards and Technology Organization. The Sirius®, XM®, and SiriusXM® names and all related marks and logos are trademarks of Sirius XM Radio Inc. All other trademarks are the property of their respective owners. Twitter® is a registered trademark of Twitter, Inc. Yakima® is a registered trademark of Yakima Products, Inc. YouTube® is a registered trademark of Google LLC. This brochure is intended for general descriptive and informational purposes only. It is subject to change and does not constitute an offer, representation or warranty (express or implied) by Nissan North America, Inc. Interested parties should confirm the accuracy of any information in this brochure as it relates to a vehicle directly with Nissan North America, Inc., before relying on it to make a purchase decision. Nissan North America, Inc., reserves the right to make changes, at any time, without prior notice, in prices, colors, materials, equipment, specifications, and models and to discontinue models or equipment. Due to continuous product development and other pre- and post-production factors, actual vehicle, materials and specifications may vary from this brochure. Some vehicles shown with optional equipment. See the actual vehicle for complete accuracy. Availability and delivery times for particular models or equipment may vary. Specifications, options and accessories may differ in Hawaii, U.S. territories and other countries. For additional information on availability, options or accessories, see your Nissan dealer or contact Nissan North America, Inc. At [NissanUSA.com](https://www.nissanusa.com), you'll find virtual product demonstrations, a way to "build your own Nissan," a dealer locator, and more information about key Nissan support services. Or if you'd prefer, call 1-800-NISSAN-3 for answers to specific questions about Frontier or any other Nissan vehicle. The Nissan names, logos, product names, feature names, and slogans are trademarks owned by or licensed to Nissan Motor Co. Ltd. and/or its North American subsidiaries. Other trademarks and trade names are those of their respective owners. Always wear your seat belt, and please drive responsibly. ©2023 Nissan North America, Inc. ²³ Frontier.

Find your frontier

Plan your route. Pack your bags. Prep your gear. Your true domain awaits. It's time to go out and find it. Redefine your idea of freedom with capability that expands your realm and inspires new adventures. This is the new Nissan Frontier.®



Nissan Frontier® Crew Cab PRO-4X® shown in Boulder Gray Pearl with Genuine Nissan Accessories and with up to 1,220 lbs. maximum payload capacity and up to 6,180 lbs. maximum towing capacity.^{1,2}



Welcome to the great indoors

The destination is rocky, dusty, and sometimes rough. Getting there doesn't have to be. With the available Remote Engine Start System, start your Frontier® remotely,^{3,4} hop in, and you'll be cradled in a prewarmed or precooled interior that defies discomfort with standard Zero Gravity front seats and conquers cold with available Dual Zone Automatic Temperature Control and available heated front seats.

- Remote Engine Start System^{3,4}
- Heated Front Seats³
- Heated Steering Wheel³
- Dual Zone Automatic Temperature Control³
- Zero Gravity Front Seats

Nissan Frontier® Crew Cab PRO-4X® shown in Charcoal Cloth with Lava Red Stitching.

NISSAN
INTELLIGENT
MOBILITY™

PRO-4X



Devoted to dirt

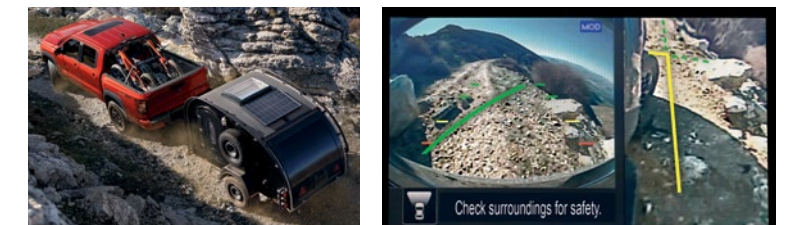
Between the straight lines and smooth surfaces of society lie all things jagged, dusty, rutted, sandy, muddy, and rocky. Excel in this environment with Frontier® PRO-4X.®

Off-road Upgrades With its all-terrain tires, Bilstein® off-road performance shocks, electronic locking rear differential, and skid plates, the PRO-4X checks all the boxes of a legit off-road performer.

Switch-operated 2-speed Transfer Case 4x4 The Frontier PRO-4X is a true 4x4, with three driver selectable modes — 2WD, 4H, and 4LO — so you can thrive in just about any environment you encounter.

Dedicated Off-road Display Keep track of pitch, roll, and key off-road functions, like 4x4 engagement and differential lock status, for a more confident day on the trail with the PRO-4X.

Intelligent Around View® Monitor Like a virtual spotter, available Intelligent Around View® Monitor with Off-Road Mode can show more of the trail around you to help you navigate tougher obstacles.⁵



Nissan Frontier® Crew Cab PRO-4X® shown in Tactical Green Metallic.

treadlightly!
.org

Nissan Frontier® Crew Cab PRO-4X® shown in Cardinal Red TriCoat with up to 1,220 lbs. maximum payload capacity and up to 6,180 lbs. maximum towing capacity.^{1,2}



Nissan Frontier® Crew Cab PRO-4X® shown in Deep Blue Pearl with up to 1,220 lbs. maximum payload capacity.¹

Nissan Safety Shield® 360 and driver assist technologies

Frontier® backs you up with a wide assortment of standard and available safety features and driver assist technologies that can help you avoid accidents and give you more peace of mind when you're towing, hauling, and doing truck things.^{6,7}

Standard Automatic Emergency Braking with Pedestrian Detection⁸

Available Rear Automatic Braking⁹

Available Rear Cross Traffic Alert¹⁰

Available Blind Spot Warning¹¹

Available Lane Departure Warning¹²

Available High Beam Assist

Available Intelligent Cruise Control¹³

310

Horsepower

281

lb-ft of Torque

1,620

lbs. max Payload¹

6,690

lbs. max Towing²



Dream it. Hitch it. Tow it. Send it.

Frontier[®] is a truck built to pull your dreams farther off the beaten path. Starting with Tow-Haul Mode, which optimizes your drive on the highway for heavier loads.³ Turn off the highway and Frontier can help you overcome uneven, hilly terrain with features like hill start assist and hill descent control,³ and confidence-inspiring approach, breakover, and departure angles. When it's time to get your trailer of choice up that last hill, engage 4LO and the electronic locking rear differential for maximum traction.³

- Tow-Haul Mode³
- Hill Start Assist
- Hill Descent Control³
- Electronic Locking Rear Differential³



32.3° - Angle of Approach

19.6° - Breakover Angle

23.0° - Angle of Departure (without tow hitch receiver)

Nissan Frontier[®] Crew Cab PRO-4X[®] shown in Boulder Gray Pearl with up to 1,220 lbs. maximum payload capacity and up to 6,180 lbs. maximum towing capacity.^{1,2}

Truck bed 2.0

LED Bed Lighting Load up after dark with plenty of lighting to see what you're doing, thanks to Frontier's available LED under-rail bed lighting.

120-V Outlet Frontier's available bed-mounted 120-volt AC power outlet gives you the flexibility of a household power plug for electricity on the go.¹⁴

Dampened Tailgate | Spray-on Bedliner³ | 3 Utili-track[®] Channels^{3, 15}



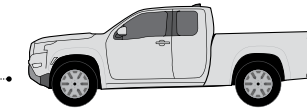
Nissan Crew Cab PRO-4X[®] shown in Baja Storm Metallic with up to 1,220 lbs. maximum payload capacity.¹

Under-seat Storage Removable under-seat storage trays stash beneath the rear seats, so there's a space for everything. Plus you can flip up the rear-seat cushions for even more storage room.⁴

Two Cabs & Two Bed Lengths Configurations galore. Choose from either the workhorse King Cab,[®] which seats four with a 6-foot bed, or the versatile five-seater Crew Cab with either a 5-foot or 6-foot bed.¹⁷

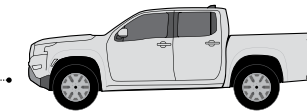
King Cab[®]
Bed — 6.0'

Available on S and SV



Crew Cab
Short Bed — 5.0'

Available on S, SV, PRO-X[®]
and PRO-4X[®]



Crew Cab
Long Bed — 6.0'

Available on SV



Roughing it just got a lot less rough

Moonroof Let in more of the outdoors at the push of a button with the available power sliding glass moonroof, which also includes a tilt feature.

NissanConnect[®] Services Powered by SiriusXM Maintain a closer relationship with your Frontier[®] using NissanConnect[®] Services. You can access a variety of features through your vehicle and compatible smartphone and even use your voice to communicate with your vehicle through Amazon Alexa or Google Assistant.^{16, 17}

9-inch Display The available NissanConnect[®] 9" color touch-screen display is one of the largest in its class,¹⁸ and invites you to tap, swipe, pinch, and zoom to your heart's content with a visual clarity and responsiveness you've never seen before in a Frontier.¹⁶

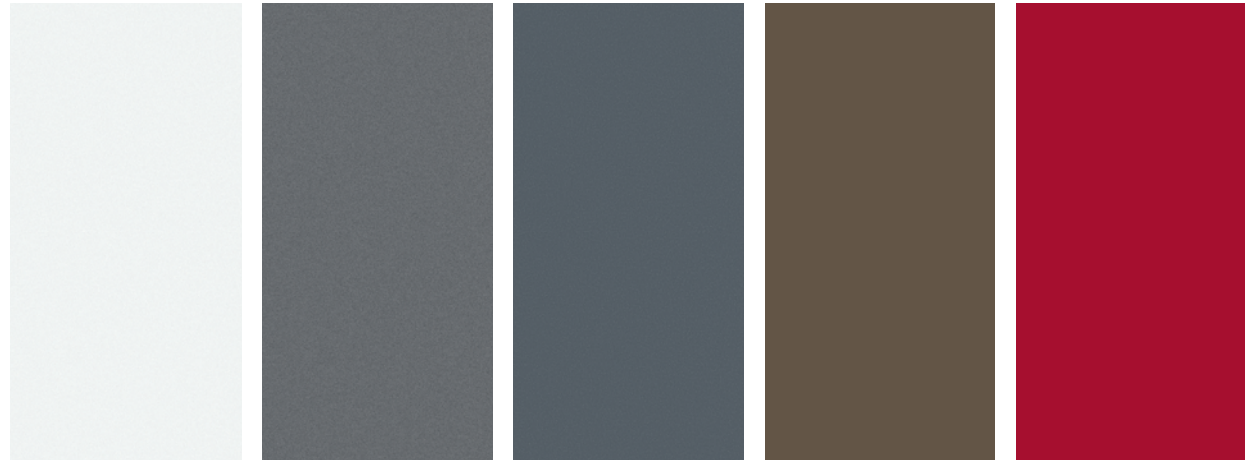
Wireless Charging Ditch the cord and place your Qi[®]-enabled smartphone on the available wireless charging pad located behind the shifter while Frontier does the rest.¹⁹

Front and Rear USB^{3, 19} | NissanConnect[®] with Wi-Fi Hotspot^{3, 16} | Fender[®] Premium Audio System³



Fender
PREMIUM AUDIO

CHOOSE YOUR COLOR



Glacier White

Gun Metallic

Boulder Gray Pearl²⁰

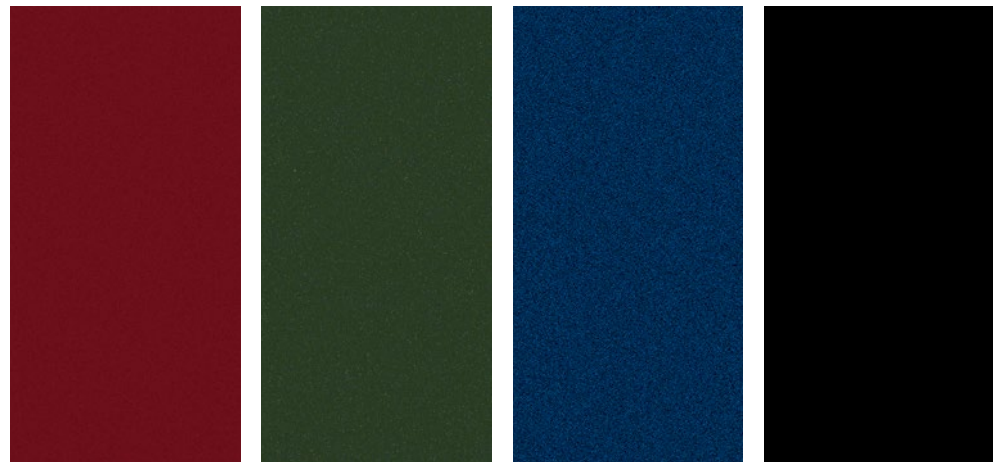
Baja Storm Metallic²⁰

Red Alert

	S	SV	PRO-X	PRO-4X
Charcoal Cloth	■			
Premium Charcoal Cloth		■		
Sandstone Cloth		CC		
Charcoal Cloth with Lava Red Stitching			■	■
Charcoal Leather with Contrast Stitching ²¹		P	P	P

- Standard
- P Part of Premium Package
- CC Crew Cab only

Nissan has taken care to ensure that the digital color swatches presented here are the closest possible representation of actual vehicle colors. Swatches may vary slightly due to viewing light or screen quality. Please see the actual vehicle and colors at your dealer.



Cardinal Red TriCoat²⁰

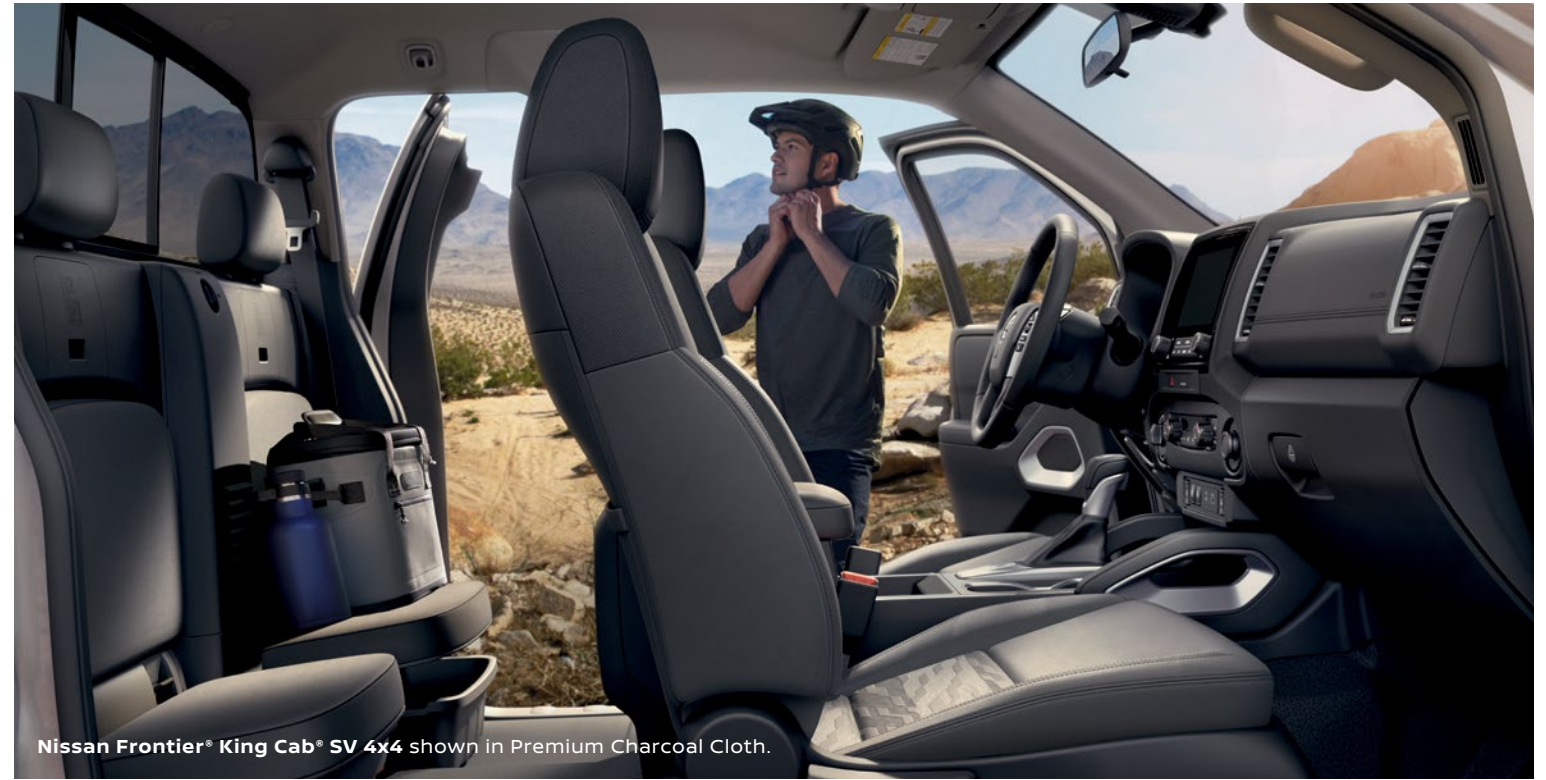
Tactical Green Metallic²⁰

Deep Blue Pearl

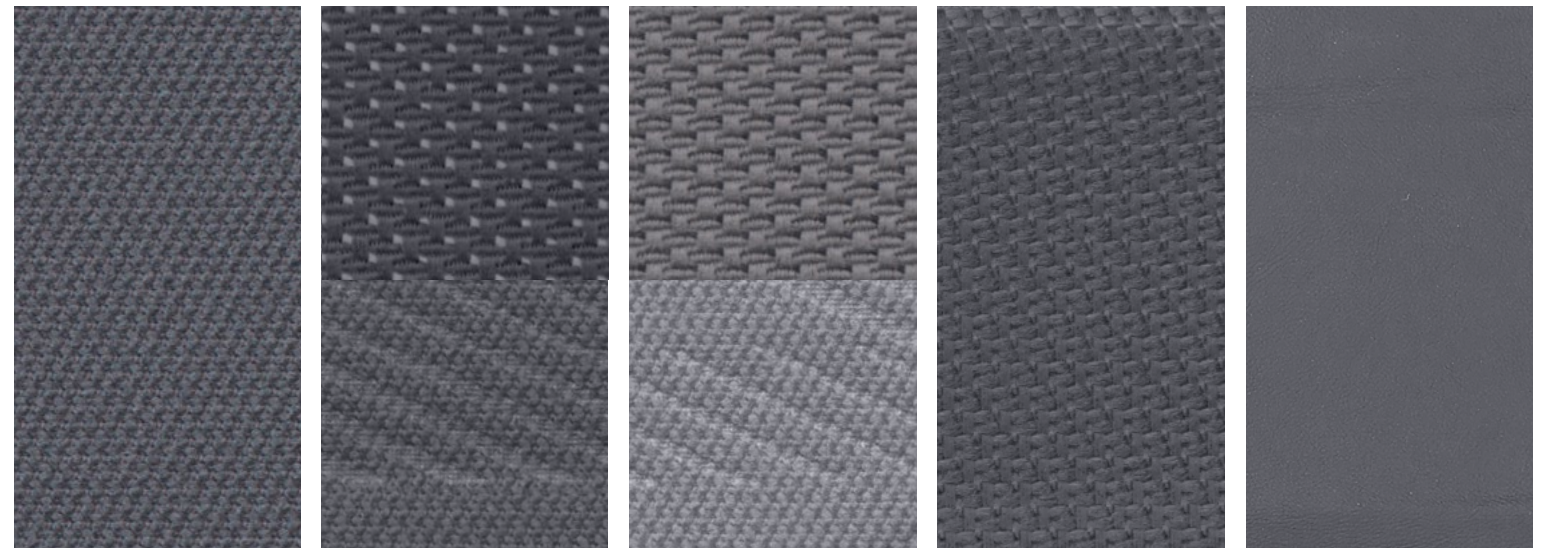
Super Black

	S	SV	PRO-X	PRO-4X
Charcoal Cloth				
Premium Charcoal Cloth		■		
Sandstone Cloth		CC		
Charcoal Cloth with Lava Red Stitching			■	■
Charcoal Leather with Contrast Stitching ²¹		P	P	P

CHOOSE YOUR INTERIOR



Nissan Frontier® King Cab® SV 4x4 shown in Premium Charcoal Cloth.



Charcoal Cloth
S

Premium Charcoal Cloth
SV

Sandstone Cloth
SV Crew Cab

Charcoal Cloth with Lava Red
Stitching
PRO-X® | PRO-4X®

Charcoal Leather with
Contrast Stitching²¹
SV | PRO-X | PRO-4X

CHOOSE YOUR TRIM LEVEL

S KING CAB® CREW CAB

- 3.8-liter V6 Direct Injection Gasoline engine with 310 hp and 281 lb-ft of torque
- 9-speed automatic transmission
- 16" Styled steel wheels
- Intelligent Forward Collision Warning²²
- Automatic Emergency Braking with Pedestrian Detection⁹
- RearView Monitor²³
- Intelligent Driver Alertness²⁴
- Vehicle Dynamic Control (VDC)²⁵
- Active Brake Limited Slip (ABLS)
- Full-length, fully boxed ladder frame
- 7" Advanced Drive-Assist™ Display²⁶
- NissanConnect® 8" color touch-screen display¹⁶
- Voice Recognition²⁷
- Apple CarPlay® integration¹⁶
- Android Auto™ compatibility¹⁶
- Hands-free Text Messaging Assistant²⁸
- Bluetooth® Hands-free Phone System¹⁶
- AM/FM audio system with four speakers
- Streaming Audio via Bluetooth®¹⁶
- One USB-A port and one USB-C port¹⁹
- SiriusXM with 3-month subscription included¹⁶
- Remote keyless entry with push button ignition
- Power door locks
- Power windows with driver's one-touch auto-down
- Rear access doors
- Second-row under-seat storage²⁹
- Tire Pressure Monitoring System (TPMS)³⁰

Crew Cab adds:

- Four full-size doors with seating for five
- 60/40-split flip-up rear bench seat
- Rear stabilizer bar
- Rear charge-only USB ports

4x4 adds:

- Switch-operated 2-speed transfer case
- Hill descent control
- Steel front skid plate
- Front tow hook³¹



PRO-X® CREW CAB

Includes SV equipment plus:

- 17" Dark-finished aluminum-alloy wheels
- Bilstein® off-road performance shock absorbers
- LED signature headlights
- LED fog lights
- LED Daytime Running Lights
- Lava Red painted tow hooks³¹
- Upper body-color/lower black front bumper
- Black overfenders
- PRO-X bed side decal
- NissanConnect® 9" color touch-screen display¹⁶
- Nissan Door to Door Navigation with Premium Traffic²⁷
- Wi-Fi Hotspot¹⁶
- NissanConnect® Services powered by SiriusXM with trial access to 5-year Select, 5-year Plus, and 6-month Premium packages¹⁶
- Wireless Apple CarPlay® integration¹⁶
- SiriusXM Travel Link with 3-month trial access¹⁶
- Nissan Intelligent Key® with Push Button Ignition
- Dual Zone Automatic Temperature Control
- PRO-X embroidered cloth seats
- Leather-wrapped steering wheel
- Leather-wrapped shift knob
- Lava Red contrast interior stitching and accents
- Sliding rear window
- Overhead console with sunglasses storage
- Sun visors with illuminated vanity mirrors and extensions
- LED front map lights and rear room lamp
- Tow-Haul Mode switch



SV KING CAB® CREW CAB CREW CAB LONG BED

SV includes S equipment plus:

- 17" 6-split spoke aluminum-alloy wheels
- Upper body-color/lower silver front bumper
- Body-color door handles
- Body-color rear bumper
- Dual power outside mirrors
- 6-way power driver's seat, with 2-way manual lumbar support
- AM/FM audio system with six speakers
- Chrome interior door handles
- Vehicle Security System

Crew Cab adds:

- Four full-size doors with seating for five
- 60/40-split flip-up rear bench seat
- Rear stabilizer bar
- Rear charge-only USB ports

4x4 adds:

- Switch-operated 2-speed transfer case
- Hill descent control
- Steel front skid plate
- Front tow hooks³¹



PRO-4X® CREW CAB

Includes PRO-X equipment plus:

- Switch-operated 2-speed transfer case
- Hill descent control
- Electronic locking rear differential
- Aluminum front skid plate
- Steel underbody skid plates (oil pan, fuel tank, 4x4 transfer case)
- PRO-4X bed side decal
- PRO-4X embroidered cloth seats
- PRO-4X carpeted floor mats



CHOOSE YOUR PACKAGE



TECHNOLOGY PACKAGE | S SV PRO-X® PRO-4X®

Available on King Cab,® Crew Cab, and Crew Cab Long Bed

- Lane Departure Warning¹²
- Blind Spot Warning¹¹
- Rear Cross Traffic Alert¹⁰

- Rear Automatic Braking⁹
- High Beam Assist
- Intelligent Cruise Control¹³
- Traffic Sign Recognition (PRO-X and PRO-4X only)³²



FENDER AUDIO PACKAGE | SV PRO-X® PRO-4X®

Available on Crew Cab and Crew Cab Long Bed

- Fender® premium audio system with 10 speakers, including subwoofers

MIDNIGHT EDITION® | SV

Available on Crew Cab

- 17" Black-painted aluminum-alloy wheels
- LED signature headlights, Daytime Running Lights, and fog lights
- Black outside mirrors
- Black lower fascia
- Black front grille
- Black Midnight Edition badging
- Black interior accents



SV CONVENIENCE PACKAGE | SV

Available on King Cab and Crew Cab

- Factory-applied spray-on bedliner
- Utili-track® Channel System with two adjustable tie-down cleats¹⁵
- Bed-mounted 120-volt AC power outlet¹⁴
- 120-volt AC power outlet in rear center console¹⁴
- Heated outside mirrors
- Heated steering wheel
- Heated front seats
- LED under-rail bed lighting
- Remote Engine Start System with Intelligent Climate Control⁴

- Class IV tow hitch receiver with 7-pin wiring harness³³
- Fog lights
- Dual Zone Automatic Temperature Control
- Nissan Intelligent Key® with Push Button Ignition
- Overhead console with sunglasses storage
- Leather-wrapped shift knob
- Sliding rear window
- Tow-Haul Mode switch
- Illuminated locking glove box with damper

SV Convenience Package is not available on Crew Cab Long Bed.



SV PREMIUM PACKAGE | SV

Available on Crew Cab

- Fender® premium audio system with 10 speakers, including subwoofers
- Leather-appointed seats
- Auto-dimming rearview mirror

- HomeLink® Universal Transceiver
- LED front map lights and rear room lamp
- LED signature headlights
- LED fog lights
- Power sliding glass moonroof with tilt feature



PRO CONVENIENCE PACKAGE | PRO-X® PRO-4X®

Available on Crew Cab

- Factory-applied spray-on bedliner
- Utili-track® Channel System with two adjustable tie-down cleats¹⁵
- Bed-mounted 120-volt AC power outlet¹⁴
- 120-volt AC power outlet in rear center console¹⁴
- Heated outside mirrors
- Heated steering wheel

- Heated front seats
- LED under-rail bed lighting
- Remote Engine Start System with Intelligent Climate Control⁴
- Class IV tow hitch receiver with 4-pin/7-pin wiring harness³³
- Intelligent Around View® Monitor (PRO-X)⁵
- Intelligent Around View® Monitor with Off-Road Mode (PRO-4X)⁵
- Wireless charger²¹



PRO PREMIUM PACKAGE | PRO-X® PRO-4X®

Available on Crew Cab

- 17" Beadlock-style aluminum-alloy wheels
- Fender® premium audio system with 10 speakers, including subwoofers

- Leather-appointed seats
- Auto-dimming rearview mirror
- HomeLink® Universal Transceiver
- Power sliding glass moonroof with tilt feature

NISSAN FRONTIER® ACCESSORIES

Ramp it up

Every Genuine Nissan Accessory is custom-fit, custom-designed, and durability-tested. Each one is backed by Nissan's 3-year/36,000-mile (whichever occurs first) limited warranty (if installed by dealer at the time of new vehicle purchase) and can be financed when installed by dealer at time of new vehicle purchase.³⁴ Affiliated Yakima® accessories are not warranted by Nissan. Refer to product manufacturer for warranty details. Nissan Limited Warranty does not cover damages or failures to the vehicle caused by improper installation or alterations of any Nissan approved accessory or component. Contact your dealer/retailer for details.³⁵

For more information and to shop online for Frontier® Genuine Nissan Accessories, go to bit.ly/23Frontier-Accys



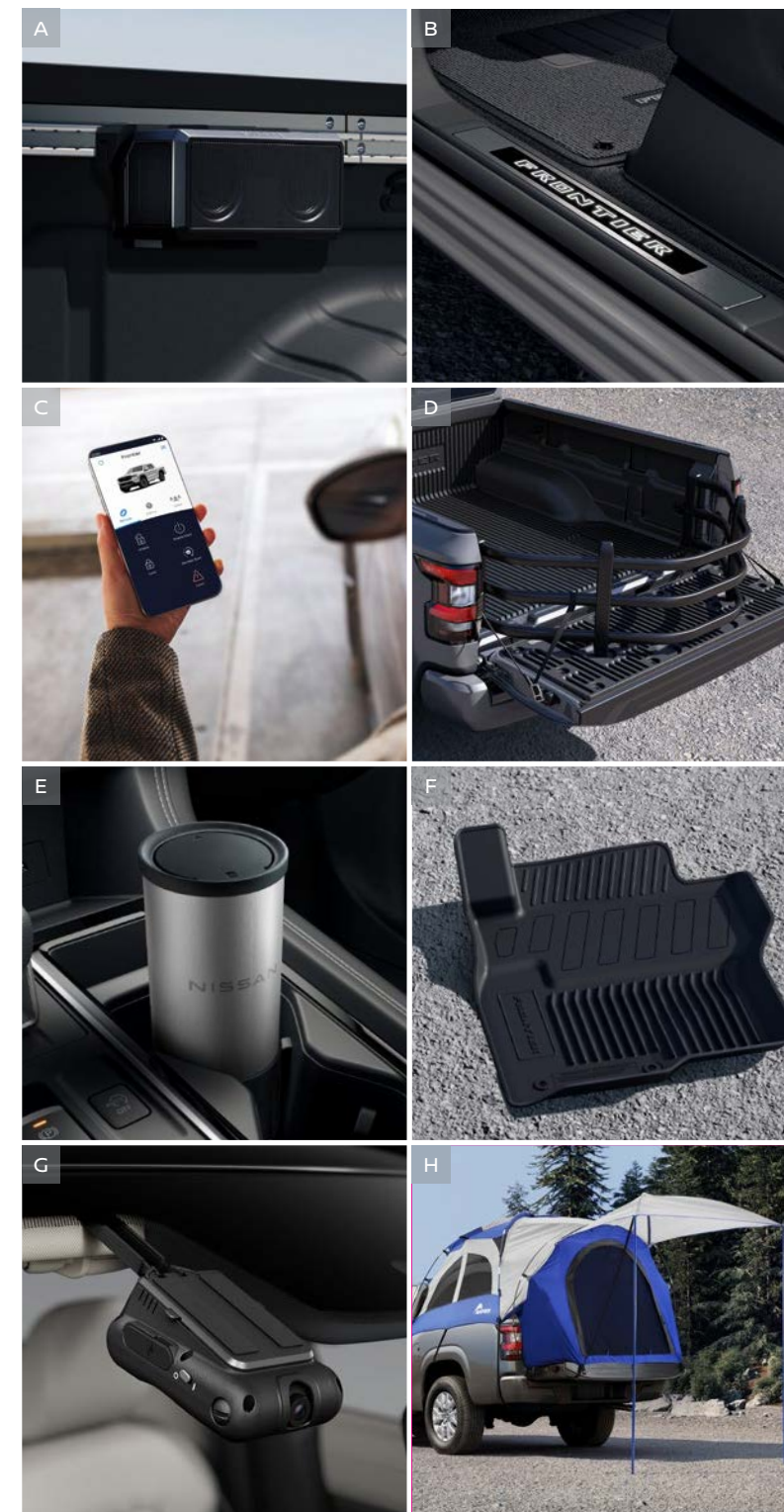
Rear/Left: **Nissan Frontier® Crew Cab® PRO-4X®** shown in Boulder Gray Pearl with 17" Beadlock-Style Aluminum-Alloy Wheels (standard on PRO-4X with Premium Package), Sport Bar, Hood Wind Deflector, Hood Graphic, Side-Window Deflectors, Off-Road Step Rails, and PRO-4X Mud Flaps.

Front/Right: **Nissan Frontier King Cab® SV 4x4** shown in Cardinal Red TriCoat with 17" Aluminum-Alloy Wheels, Sport Bar, Black Side Graphic, Side-Window Deflectors, Black Tube Step Rails, Splash Guards, Black Tailgate Logo Insert (3D Lettering), Bed Assist Grip, Bed Area Cargo Net, Rear Bumper Step, Class IV Tow Hitch Receiver,³³ Hitch Ball Mount,³³ Hitch Ball,³³ and Trailer Tow Harness (4-pin/7-pin).³³

- A. Nissan Tailgate Audio by KICKER®**
Tailgate with your favorite soundtrack.
- B. Illuminated Kick Plates**
Illumination and style that greets you on entry.
- C. Virtual Key³⁶**
Use your compatible smartphone or Apple Watch® to lock/unlock and start your Frontier. You can even share this access with family and friends.
- D. Sliding Bed Extender¹⁵**
Give your bed more capacity, with Utili-track® adjustability.
- E. Trash Bin³⁷**
Tidy up your space with this handy, removable trash bin.
- F. All-Season Floor Mats — High Wall Liners**
Don't let the muck mess up your truck.
- G. Dual Camera Drive Recorder^{37, 38}**
Catch what's happening outside and inside your Frontier.
- H. Bed Tent**
Convert your truck bed into a cozy, custom tent that sleeps two.

Additional Accessories:

- Mud Flaps
- Carpeted Floor Mats
- PRO-4X® Illuminated Kick Plates
- Interior Door Scuff Protection
- Fixed Bed Extender¹⁵
- Clear Hood Protector
- Rear Underseat Storage Cargo Net
- Security Impact Sensor
- Frameless Auto-Dimming Rearview Mirror w/ Universal Remote
- Electronic Tailgate Lock
- Tube Step Rails
- Remote Engine Start⁴
- Affiliated: Yakima® RidgeBack 4 — Hitch Mount Bike Rack^{15, 35}
- Affiliated: Yakima® HoldUp 2 — Hitch Mount Bike Rack^{15, 35}
- Off-Road Adventure Kit
- Adventure Medic Kit
- And More



SPECIFICATIONS

Engine	King Cab®		Crew Cab			
	S	SV	S	SV	PRO-X®	PRO-4X®
3.8-liter Direct Injection Gasoline (DIG) DOHC 24-valve V6 engine Horsepower – 310 hp @ 6,400 rpm Torque – 281 lb-ft of torque @ 4,400 rpm	■	■	■	■	■	■

Drivetrain						
9-speed automatic transmission	■	■	■	■	■	■
Switch-operated 2-speed transfer case 4x4 ³⁹	□	□	□	□		■
Electronic locking rear differential						■
Tow-Haul Mode switch		C1		C1/LB	■	■

Brakes						
Front and rear vented disc brakes	■	■	■	■	■	■
4-wheel Anti-lock Braking System (ABS)	■	■	■	■	■	■
Electronic Brake force Distribution (EBD)	■	■	■	■	■	■
Brake Assist ⁴⁰	■	■	■	■	■	■

Suspension/Steering						
Independent double-wishbone front suspension with stabilizer bar	■	■	■	■	■	■
Overslung multi-leaf rear suspension with solid axle	■	■	■	■	■	■
Rear stabilizer bar			■	■	■	■
Bilstein® off-road performance shock absorbers				■	■	

Driver Assistance Technologies						
Cruise control	■	■	■	■	■	■
Intelligent Cruise Control ¹³	T	T	T	T	T	T
Intelligent Forward Collision Warning ²²	■	■	■	■	■	■
Automatic Emergency Braking with Pedestrian Detection ⁵	■	■	■	■	■	■
Lane Departure Warning ¹²	T	T	T	T	T	T
Blind Spot Warning ¹¹	T	T	T	T	T	T
Rear Cross Traffic Alert ¹⁰	T	T	T	T	T	T
RearView Monitor ²³	■	■	■	■	■	■
Intelligent Around View® Monitor ⁵					C2	
Intelligent Around View® Monitor with Off-Road Mode ⁵						C2
Rear Sonar System ⁴¹	T	T	T	T	T	T
Rear Automatic Braking ⁹	T	T	T	T	T	T
High Beam Assist	T	T	T	T	T	T
Hill start assist ⁴²	■	■	■	■	■	■
Hill descent control ⁴²	□	□	□	□		■
Vehicle Dynamic Control (VDC) with Traction Control System (TCS) ²⁵	■	■	■	■	■	■
Active Brake Limited Slip (ABLS)	■	■	■	■	■	■
Trailer Sway Control ³³	■	■	■	■	■	■
Intelligent Driver Alertness ²⁴	■	■	■	■	■	■
Traffic Sign Recognition ³²					T	T

Wheels/Tires						
16" Styled steel wheels	■		■			
17" 6-split spoke aluminum-alloy wheels		■				
17" Black-painted aluminum-alloy wheels				ME		
17" Dark-finished aluminum-alloy wheels				■	■	
17" Beadlock-style aluminum-alloy wheels				P2	P2	

■ Standard □ Optional T Technology Package ME Midnight Edition Package C1 SV Convenience Package C2 PRO Convenience Package

Wheels/Tires (continued)	King Cab®		Crew Cab			
	S	SV	S	SV	PRO-X®	PRO-4X®
265/70R16 all-season tires	■		■			
265/65R17 all-season tires		■		■		
265/70R17 all-terrain tires					■	■

Chassis						
Body-on-frame construction	■	■	■	■	■	■
Full-length, fully boxed ladder frame	■	■	■	■	■	■

Exterior Features						
Front skid plate	■	■	■	■	■	■
Skid plates — oil pan, fuel tank, 4x4 transfer case						■
Intelligent Auto Headlights	■	■	■	■	■	■
Fog lights		C1		C1/LB		
LED signature headlights, LED Daytime Running Lights, and LED fog lights				P1/ME	■	■
LED taillights	■	■	■	■	■	■
Front tow hooks ³¹	□	□	□	□		■
Black front grille	■		■	ME	■	■
Upper body-color/lower black front bumper	■		■	ME	■	■
Upper body-color/lower silver front bumper		■		■		
Body-color rear bumper		■		■	■	■
Black overfenders					■	■
Black outside mirrors	■		■	ME		
Body-color door handles and outside mirrors		■		■	■	■
Dual power outside mirrors		■		■	■	■
Heated outside mirrors		C1		C1/LB	C2	C2
Black Midnight Edition® badging				ME		
Rear access doors	■	■				
Four full-size doors			■	■	■	■
Power sliding glass moonroof with tilt feature				P1	P2	P2
Sliding rear window		C1		C1/LB	■	■
Class IV tow hitch receiver with wiring harness ³³		C1		C1/LB	C2	C2
Long Bed				LB		
Utili-track® Channel System with two adjustable tie-down cleats ¹⁵		C1		C1/LB	C2	C2
Factory-applied spray-on bedliner		C1		C1/LB	C2	C2
Bed-mounted 120-volt AC power outlet ¹⁴		C1		C1/LB	C2	C2
Dampened assist tailgate	■	■	■	■	■	■
Overhead cargo bed lights	■	■	■	■	■	■
Bed rail caps and tailgate spoiler	■	■	■	■	■	■
LED under-rail bed lighting		C1		C1/LB	C2	C2

Comfort/Convenience						
Air conditioning	■	■	■	■		
Dual Zone Automatic Temperature Control		C1		C1/LB	■	■
In-cabin microfilter	■	■	■	■	■	■
Rear Door Alert ⁴³	■	■	■	■	■	■
Remote keyless entry with push button ignition	■	■	■	■		
Nissan Intelligent Key® with Push Button Ignition		C1		C1/LB	■	■
Remote Engine Start System with Intelligent Climate Control ⁴		C1		C1/LB	C2	C2
Auto-dimming rearview mirror with HomeLink® Universal Transceiver				P1	P2	P2
Illuminated locking glove box with damper		C1		C1/LB	■	■

F Fender Audio Package P1 SV Premium Package P2 PRO Premium Package LB Crew Cab Long Bed

Comfort/Convenience (continued)	King Cab®		Crew Cab			
	S	SV	S	SV	PRO-X®	PRO-4X®
Front map lights and rear room lamp	■	■	■	■		
LED front map lights and rear room lamp				P1	■	■
12-volt DC power outlet ⁴⁴	■	■	■	■	■	■
120-volt AC power outlet in rear center console ¹⁴		C1		C1/LB	C2	C2
Sun visors with illuminated vanity mirrors and extensions				■	■	
Second-row under-seat storage	■	■		■	■	■
Overhead console with sunglasses storage		C1		C1/LB	■	■

Seating/Appointments						
6-way manually adjustable driver's seat	■		■			
6-way power adjustable driver's seat, with 2-way manual lumbar support		■		■	■	■
4-way manually adjustable passenger's seat	■	■	■	■	■	■
Forward-facing rear flip-up seats	■	■				
60/40-split flip-up rear bench seat			■	■	■	■
Cloth seat trim		■	■	■		
PRO embroidered cloth seats					■	■
Leather-appointed seats				P1	P2	P2
Heated front seats		C1		C1/LB	C2	C2
Leather-wrapped steering wheel		C1		C1/LB	■	■
Heated steering wheel		C1		C1/LB	C2	C2
Leather-wrapped shift knob		C1		C1/LB	■	■
Black interior accents				ME		
Lava Red interior accents				■	■	
PRO-4X® carpeted floor mats						■

Infotainment						
7" Advanced Drive-Assist™ Display ²⁶	■	■	■	■	■	■
NissanConnect® 8" color touch-screen display ¹⁶	■	■	■	■		
NissanConnect® 9" color touch-screen display ¹⁶					■	■
Nissan Door to Door Navigation with Premium Traffic ²⁷					■	■
NissanConnect® Services powered by SiriusXM with trial access to 5-year Select, 5-year Plus, and 6-month Premium packages ¹⁶					■	■
Apple CarPlay® integration ¹⁶	■	■	■	■	■	■
Wireless Apple CarPlay® integration ¹⁶					■	■
Android Auto™ compatibility ¹⁶	■	■	■	■	■	■
Wi-Fi Hotspot ¹⁶					■	■
SiriusXM Traffic and Travel Link with 3-month trial access ¹⁶					■	■
AM/FM audio system with four speakers	■		■			
AM/FM audio system with six speakers		■			■	■
Fender® premium audio system with 10 speakers, including subwoofers				F/P1	F/P2	F/P2
One USB-A port and one USB-C port ¹⁹	■	■				
Two USB-A ports and two USB-C ports ¹⁹			■	■	■	■
Wireless charger ¹⁹					C2	C2
SiriusXM with 3-month subscription included ¹⁶	■	■	■	■	■	■

Safety						
Nissan Advanced Air Bag System with dual-stage supplemental front air bags with seat-belt and occupant-classification sensors ⁴⁵	■	■	■	■	■	■
Driver and front-passenger seat-mounted side-impact supplemental air bags ⁴⁵	■	■	■	■	■	■

Safety (continued)	King Cab®		Crew Cab			
	S	SV	S	SV	PRO-X®	PRO-4X®
Roof-mounted curtain supplemental air bags for side-impact with rollover sensor ⁴⁵	■	■	■	■	■	■
Driver and front-passenger supplemental knee air bags ⁴⁵	■	■	■	■	■	■
LATCH System (Lower Anchors and Tethers for Children)	■	■	■	■	■	■
Zone Body construction with front and rear crumple zones	■	■	■	■	■	■
Tire Pressure Monitoring System (TPMS) ³⁰	■	■	■	■	■	■

CAPACITIES/TOWING/PAYLOAD/MPG

Capacities	King Cab	Crew Cab
Seating capacity	4	5
Interior passenger volume (cu. ft.)	85.6	100.1 ⁴⁶
Fuel tank (gals.)	21	21

Maximum Towing – Lbs. ²				
	S	SV	PRO-X	PRO-4X
King Cab 4x2	6,690	6,650	-	-
King Cab 4x4	6,530	6,480	-	-
Crew Cab 4x2	6,560	6,510	6,410	-
Crew Cab 4x4	6,400	6,350	-	6,180
Crew Cab Long Bed 4x2	-	6,440	-	-
Crew Cab Long Bed 4x4	-	6,240	-	-

Maximum Payload – Lbs. ¹				
	S	SV	PRO-X	PRO-4X
King Cab 4x2	1,590	1,620	-	-
King Cab 4x4	1,430	1,430	-	-
Crew Cab 4x2	1,460	1,480	1,430	-
Crew Cab 4x4	1,290	1,310	-	1,220
Crew Cab Long Bed 4x2	-	1,300	-	-
Crew Cab Long Bed 4x4	-	1,100	-	-

2023 EPA Fuel Economy Estimates ⁴⁷	
City/Hwy/Combined mpg	
4x2 (4x4)	18/24/20 (17/22/19)

NISSAN ROADSIDE ASSISTANCE

Your peace of mind is on us. For 36 months or 36,000 miles, whichever comes first, your new Nissan is covered for the following:⁴⁸

- Flat-tire changes
- Trip Interruption benefits
- Jump starts
- Vehicle lockouts
- Emergency fuel delivery

Follow Nissan on:



visit [NissanUSA.com/frontier](https://www.nissanusa.com/frontier)



Sign up to get the latest on
Nissan vehicles, news, and events.

<https://www.nissanusa.com/brochures/request-brochure.html>